



# WEEKLY SUMMARY REPORT – CONTRACT WEEK 42

21-036 EAST NAPLES BAY

## DREDGING AND ROCK REMOVAL PROJECT



Date: <b>8/1/2022 to 8/4/2022</b>			
Inspectors: <b>Sam Boyd</b>	Stantec PIN: <b>2028113191</b>	Accidents <input type="checkbox"/> Yes <input checked="" type="checkbox"/> No	
Days of Week: <b>Monday to Friday</b>	Contract Days: <b>288 to 292</b>	Total Days: <b>365</b>	Accident Report #: <b>N/A</b>
Canal(s) Worked In: <b>BB-BB / X-X</b>	Stations Worked Between: <b>0+00 to 4+50 / 3+00 to 4+50</b>		

### General

#### Remarks

#### **#1 – Prime Contractor – Quality Enterprises:**

##### Monday 08-01-2022:

- Contractor has a barge, an excavator, and a hopper staged in Canal BB-BB at station 4+50. Contractor also has a hopper staged in Canal CC-CC between stations 1+00 and 1+50. In addition, Contractor has a long-reach excavator, a water tank, and two fuel cubes staged on the property located at 1300 Curlew Avenue, Naples, FL, 34102.
- Dump truck came to site at 1300 Curlew Avenue.
- Contractor used 326 excavator to transport removed material from dewatering site to dump truck bed at 1300 Curlew Avenue.
- Dump truck took material off site.
- Contractor used support boat to install turbidity curtain across the mouth of Canal BB-BB as well as to open and close it as necessary for push boat to enter canal with empty hoppers and to exit canal with full hoppers.
- Contractor used 323 excavator to remove 5 hoppers of material from Canal BB-BB.
- Contractor used push boat to position barge as necessary for removing material as well as to transport full hoppers of material to Canal CC-CC and empty hoppers back to Canal BB-BB.
- Contractor used 326 excavator to transfer 5 hoppers of removed material from hoppers to dewatering site at 1300 Curlew Avenue.

##### Tuesday 08-02-2022:

- Contractor has a barge, an excavator, and a hopper staged in Canal BB-BB at station 3+00. Contractor also has a hopper staged in Canal CC-CC between stations 1+00 and 1+50. In addition, Contractor has a long-reach excavator, a water tank, and two fuel cubes staged on the property located at 1300 Curlew Avenue, Naples, FL, 34102.
- Dump truck came to site at 1300 Curlew Avenue.
- Contractor used 326 excavator to transport removed material from dewatering site to dump truck bed at 1300 Curlew Avenue.
- Dump truck took material off site.

##### Wednesday 08-03-2022:

- Contractor has a barge, an excavator, and a hopper staged in Canal BB-BB at station 3+00. Contractor also has a hopper staged in Canal CC-CC between stations 1+00 and 1+50. In addition, Contractor has a long-reach excavator, a water tank, and two fuel cubes staged on the property located at 1300 Curlew Avenue, Naples, FL,



# WEEKLY SUMMARY REPORT – CONTRACT WEEK 42

21-036 EAST NAPLES BAY

## DREDGING AND ROCK REMOVAL PROJECT



34102.

- Contractor used support boat to install turbidity curtain across the mouth of Canal BB-BB as well as to open and close it as necessary for push boat to enter canal with empty hoppers and to exit canal with full hoppers.
- Contractor used 323 excavator to remove 5 hoppers of material from Canal BB-BB.
- Contractor used push boat to position barge as necessary for removing material as well as to transport full hoppers of material to Canal CC-CC and empty hoppers back to Canal BB-BB.
- Contractor used 326 excavator to transfer 5 hoppers of removed material from hoppers to dewatering site at 1300 Curlew Avenue.

### Thursday 08-04-2022:

- Contractor has a barge, an excavator, and a hopper staged in Canal BB-BB at station 1+00. Contractor also has a hopper staged in Canal CC-CC between stations 1+00 and 1+50. In addition, Contractor has a long-reach excavator, a water tank, and two fuel cubes staged on the property located at 1300 Curlew Avenue, Naples, FL, 34102.
- Contractor used support boat to install turbidity curtain across the mouth of Canal BB-BB as well as to open and close it as necessary for push boat to enter canal with empty hoppers and to exit canal with full hoppers.
- Contractor used 323 excavator to remove 2 hoppers of material from Canal BB-BB.
- Contractor used push boat to position barge as necessary for removing material as well as to transport full hoppers of material to Canal CC-CC and empty hoppers back to Canal BB-BB.
- Contractor used 326 excavator to transfer 2 hoppers of removed material from hoppers to dewatering site at 1300 Curlew Avenue.
- Contractor used push boat to transport barge, 323 excavator, and hopper from Canal BB-BB to Canal X-X.
- Morgan & Eklund boat surveyed Canal BB-BB.
- Contractor used support boat to install turbidity curtain across the mouth of Canal X-X.
- Contractor used 323 to removed material between stations 4+50 and 4+25.
- Contractor used push boat to position barge as necessary for removing material.

### Friday 08-05-2022:

- Contractor has a barge, an excavator, and a hopper staged in Canal X-X at station 4+00. Contractor also has a hopper staged in Canal CC-CC between stations 1+00 and 1+50. In addition, Contractor has a long-reach excavator, a water tank, and two fuel cubes staged on the property located at 1300 Curlew Avenue, Naples, FL, 34102.
- Contractor used support boat to install turbidity curtain across the mouth of Canal X-X as well as to open and close it as necessary for push boat to enter canal with empty hoppers and to exit canal with full hoppers.
- Contractor used 323 excavator to remove 2 hoppers of material from Canal X-X.
- Contractor used push boat to position barge as necessary for removing material as well as to transport full hoppers of material to Canal CC-CC and empty hoppers back to Canal X-X.



## WEEKLY SUMMARY REPORT – CONTRACT WEEK 42

21-036 EAST NAPLES BAY

### DREDGING AND ROCK REMOVAL PROJECT



- Contractor used 326 excavator to transfer 2 hoppers of removed material from hoppers to dewatering site at 1300 Curlew Avenue.
- Dump trucks came to site at 1300 Curlew Avenue.
- Contractor used 326 excavator to transfer removed material from dewatering site to dump truck beds.
- Dump trucks took material off site.
- Contractor used push boat to transport barge, 323 excavator, and hopper from Canal X-X to Canal CC-CC.
- Contractor used fuel cube to refuel 323 excavator.

***Note: Daily reports with pictures attached for the week.***



**DAILY REPORT OF CONSTRUCTION**  
 21-036 EAST NAPLES BAY  
 DREDGING AND ROCK REMOVAL PROJECT



Date: <b>08/01/2022</b>			
Inspectors: <b>SB</b>	Stantec PIN: <b>2028113191</b>		Accidents <input type="checkbox"/> Yes <input checked="" type="checkbox"/> No
Day of Week: <b>Monday</b>	Contract Day: <b>288/365</b>	Week: <b>42</b>	Accident Report #: <b>N/A</b>
High Temp (°F): <b>91°F</b>	AM Conditions: <b>Sunny</b>	PM Conditions: <b>Rainy</b>	High Tide: <b>3:37 PM +2.8'</b>
Low Temp (°F): <b>78°F</b>	Wind: <b>7 mph</b>	Wind: <b>5 mph</b>	Low Tide: <b>10:12 AM +1.1'</b>
Canal Worked In: <b>BB-BB</b>	Stations Worked Between:	<b>3+00 to 4+50</b>	

<b>General</b>
<p><b>#1 – Prime Contractor – Quality Enterprises:</b></p> <ul style="list-style-type: none"> <li>• Contractor has a barge, an excavator, and a hopper staged in Canal BB-BB at station 4+50. Contractor also has a hopper staged in Canal CC-CC between stations 1+00 and 1+50. In addition, Contractor has a long-reach excavator, a water tank, and two fuel cubes staged on the property located at 1300 Curlew Avenue, Naples, FL, 34102.</li> <li>• Dump truck came to site at 1300 Curlew Avenue.</li> <li>• Contractor used 326 excavator to transport removed material from dewatering site to dump truck bed at 1300 Curlew Avenue.</li> <li>• Dump truck took material off site.</li> <li>• Contractor used support boat to install turbidity curtain across the mouth of Canal BB-BB as well as to open and close it as necessary for push boat to enter canal with empty hoppers and to exit canal with full hoppers.</li> <li>• Contractor used 323 excavator to remove 5 hoppers of material from Canal BB-BB.</li> <li>• Contractor used push boat to position barge as necessary for removing material as well as to transport full hoppers of material to Canal CC-CC and empty hoppers back to Canal BB-BB.</li> <li>• Contractor used 326 excavator to transfer 5 hoppers of removed material from hoppers to dewatering site at 1300 Curlew Avenue.</li> </ul>

Contractor(s) and Personnel										
#	Name	Type	#	Hrs.	Type	#	Hrs.	Type	#	Hrs.
1	Prime: <b>Quality Enterprises</b>	PM	0	0	Boat Captain	1	9	Mechanic	0	0
		Excavator Operator	2	9	Truck Driver	0	0	Assistant	1	9
		Technician	0	0	Superintendent	0	0	VP	0	0

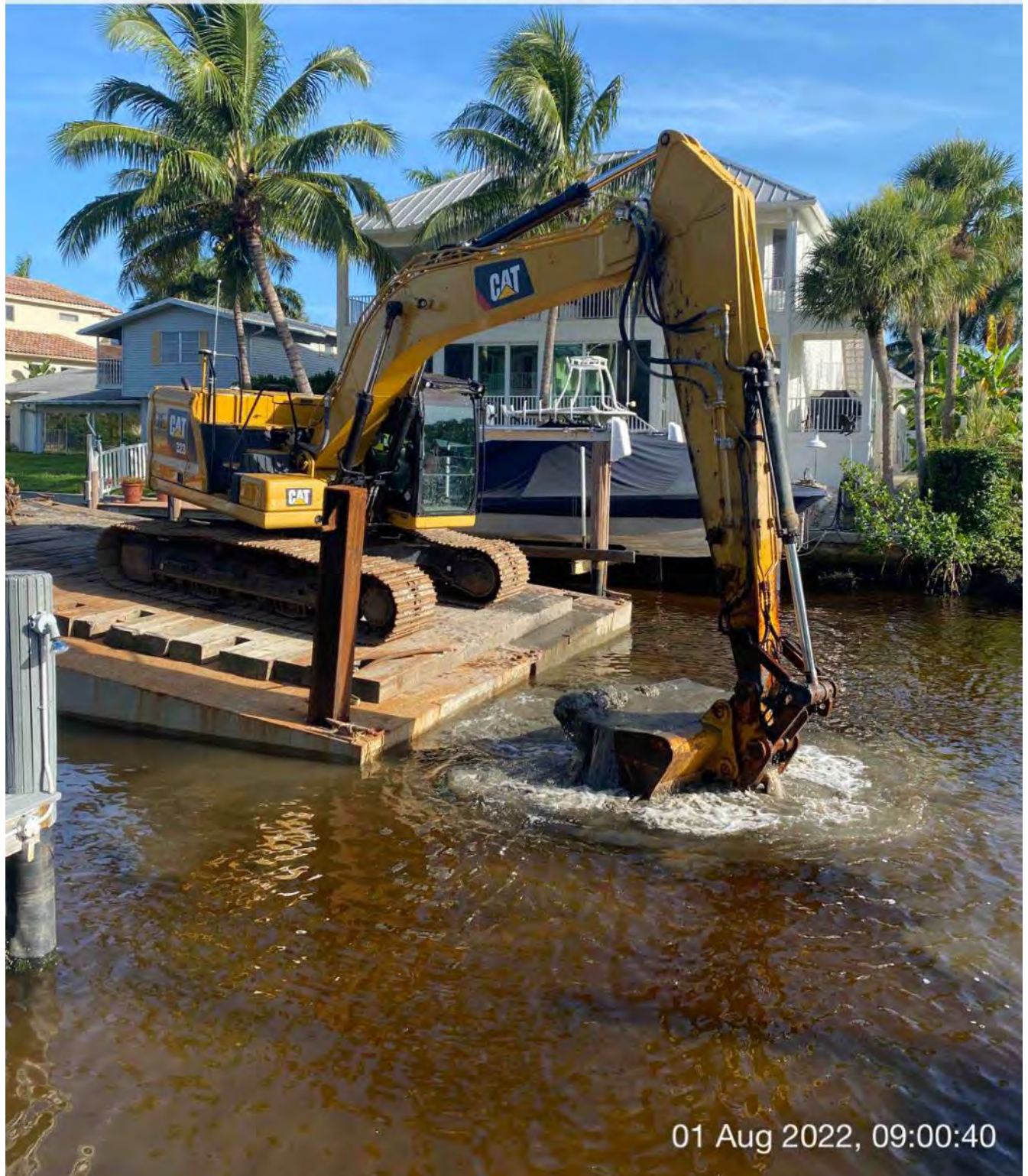
Equipment					
Cont/ Sub #	Equipment ID	Description	# Pieces	# Used	Total Hours Used
1	N/A	Barge	1	1	9
1	CAT 323	Excavator	1	1	8
1	CAT 326	Excavator	1	1	5
1	02016	Front End Loader	0	0	0
1	FL6223TB	Push Boat	1	1	9
1	FL2474PP	Support Boat	1	1	4
1	N3758Z	Fuel Truck	0	0	0
1	P9457E	Water Truck	0	0	0
1	725RZM	Water Tank	1	0	0
1	Z68EAZ	Small Dump truck	0	0	0
1	PB727E	Small Dump truck	0	0	0
1	Z67EAZ	Trash Truck	0	0	0
1	MB27DQ	Dump truck	0	0	0
1	MB32DQ	Dump truck	1	1	7
1	MB30DQ	Utility Truck	0	0	0
1	MB26DQ	Utility Truck	0	0	0
1	N9524Z	Transport Truck	0	0	0
1	044RTN	Welding Truck	0	0	0
1	N8105X	Crane Truck	0	0	0

Visitors			
Name	Company	Hours at Job Site	
		From:	To:

Inspector Name and Position	Hours at Job Site/Office		Total Hours
Sam Boyd, EIT	From: 9:00 AM	To: 5:00 PM	8.0



☀ 339°N (T) ☉ 26°8'8"N, 81°47'13"W ±49ft ▲ 8ft



01 Aug 2022, 09:00:40

323 excavator removing material from station 4+50

W NW N  
40 270 300 330 0

☉ 311°NW (T) ☉ 26°8'8"N, 81°47'13"W ±42ft ▲ 8ft



01 Aug 2022, 09:04:43

323 excavator removing material from station 4+50 and transferring to hopper

W 270 NW 300 330 N 0 N 30  
☀ 334°NW (T) ☉ 26°8'8"N, 81°47'16"W ±42ft ▲ 8ft



Turbidity curtain installed across the mouth of Canal BB-BB



S 180 SW 210 40 W 270 300  
☉ 238°SW (T) ☉ 26°8'14"N, 81°47'15"W ±13ft ▲ 7ft



01 Aug 2022, 09:40:50

326 excavator transferring removed material from dewatering site to dump truck bed at 1300 Curlew Avenue

S 150 180 210 240 270 W  
SW  
☀ 216°SW (T) ☉ 26°8'13"N, 81°47'15"W ±13ft ▲ 8ft



326 excavator transferring removed material from hopper to dewatering site at 1300 Curlew Avenue



☀ 317°NW (T)    ● 26°8'8"N, 81°47'16"W ±22ft    ▲ 20ft



Push boat transporting full hopper of removed material from Canal BB-BB to Canal CC-CC

SW W NW  
210 240 270 300 330  
260°W (T) 26°8'13"N, 81°47'16"W ±13ft ▲ 9ft



Push boat transporting empty hopper from Canal CC-CC to Canal BB-BB

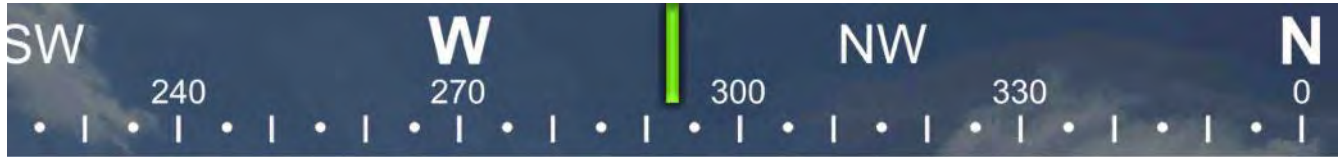


☉ 320°NW (T) ● 26°8'8"N, 81°47'13"W ±22ft ▲ 8ft



01 Aug 2022, 14:21:04

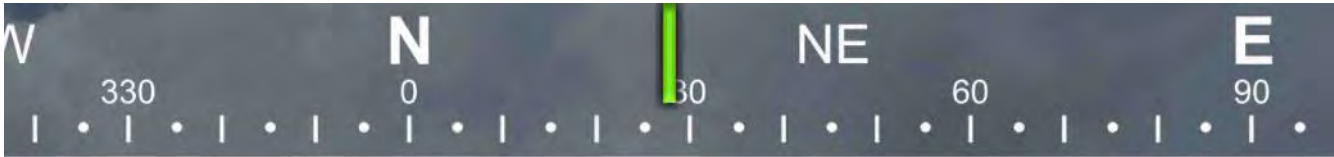
323 excavator removing material from station 3+50



☉ 293°NW (T) ● 26°8'3"N, 81°47'29"W ±656ft ▲ 11ft



Support boat opening turbidity curtain to allow push boat to exit Canal BB-BB



☉ 28°NE (T) ● 26°8'8"N, 81°47'14"W ±26ft ▲ 9ft



323 excavator lifting spud to allow push boat to mobilize barge at station 3+00



**DAILY REPORT OF CONSTRUCTION**  
 21-036 EAST NAPLES BAY  
 DREDGING AND ROCK REMOVAL PROJECT



Date: <b>08/02/2022</b>			
Inspectors: <b>SB</b>	Stantec PIN: <b>2028113191</b>		Accidents <input type="checkbox"/> Yes <input checked="" type="checkbox"/> No
Day of Week: <b>Tuesday</b>	Contract Day: <b>289/365</b>	Week: <b>42</b>	Accident Report #: <b>N/A</b>
High Temp (°F): <b>89°F</b>	AM Conditions: <b>Sunny</b>	PM Conditions: <b>Sunny</b>	High Tide: <b>4:27 PM +2.7'</b>
Low Temp (°F): <b>76°F</b>	Wind: <b>3 mph</b>	Wind: <b>10 mph</b>	Low Tide: <b>10:56 AM +1.0'</b>
Canal Worked In: <b>N/A</b>	Stations Worked Between:	<b>N/A</b>	

<b>General</b>
<p><b>#1 – Prime Contractor – Quality Enterprises:</b></p> <ul style="list-style-type: none"> <li>• Contractor has a barge, an excavator, and a hopper staged in Canal BB-BB at station 3+00. Contractor also has a hopper staged in Canal CC-CC between stations 1+00 and 1+50. In addition, Contractor has a long-reach excavator, a water tank, and two fuel cubes staged on the property located at 1300 Curlew Avenue, Naples, FL, 34102.</li> <li>• Dump truck came to site at 1300 Curlew Avenue.</li> <li>• Contractor used 326 excavator to transport removed material from dewatering site to dump truck bed at 1300 Curlew Avenue.</li> <li>• Dump truck took material off site.</li> </ul>



Contractor(s) and Personnel										
#	Name	Type	#	Hrs.	Type	#	Hrs.	Type	#	Hrs.
1	Prime: <b>Quality Enterprises</b>	PM	0	0	Boat Captain	0	0	Mechanic	0	0
		Excavator Operator	2	9	Truck Driver	0	0	Assistant	1	9
		Technician	0	0	Superintendent	0	0	VP	0	0

Equipment					
Cont/ Sub #	Equipment ID	Description	# Pieces	# Used	Total Hours Used
1	N/A	Barge	1	0	0
1	CAT 323	Excavator	1	0	0
1	CAT 326	Excavator	1	1	4
1	02016	Front End Loader	0	0	0
1	FL6223TB	Push Boat	1	0	0
1	FL2474PP	Support Boat	1	1	1
1	N3758Z	Fuel Truck	0	0	0
1	P9457E	Water Truck	0	0	0
1	725RZM	Water Tank	1	0	0
1	Z68EAZ	Small Dump truck	0	0	0
1	PB727E	Small Dump truck	0	0	0
1	Z67EAZ	Trash Truck	0	0	0
1	MB27DQ	Dump truck	0	0	0
1	MB32DQ	Dump truck	1	1	6
1	MB30DQ	Utility Truck	0	0	0
1	MB26DQ	Utility Truck	0	0	0
1	N9524Z	Transport Truck	0	0	0
1	044RTN	Welding Truck	0	0	0
1	N8105X	Crane Truck	0	0	0

Visitors			
Name	Company	Hours at Job Site	
		From:	To:

Inspector Name and Position	Hours at Job Site/Office		Total Hours
Sam Boyd, EIT	From: 8:30 AM	To: 4:00 PM	8.0



Removed material at dewatering site at 1300 Curlew Avenue



**DAILY REPORT OF CONSTRUCTION**  
 21-036 EAST NAPLES BAY  
 DREDGING AND ROCK REMOVAL PROJECT



Date: <b>08/03/2022</b>			
Inspectors: <b>SB</b>	Stantec PIN: <b>2028113191</b>		Accidents <input type="checkbox"/> Yes <input checked="" type="checkbox"/> No
Day of Week: <b>Wednesday</b>	Contract Day: <b>290/365</b>	Week: <b>42</b>	Accident Report #: <b>N/A</b>
High Temp (°F): <b>92°F</b>	AM Conditions: <b>Sunny</b>	PM Conditions: <b>Sunny</b>	High Tide: <b>5:28 PM +2.5'</b>
Low Temp (°F): <b>73°F</b>	Wind: <b>5 mph</b>	Wind: <b>9 mph</b>	Low Tide: <b>11:49 AM +0.9'</b>
Canal Worked In: <b>BB-BB</b>	Stations Worked Between:	<b>1+00 to 3+00</b>	

<b>General</b>
<p><b>#1 – Prime Contractor – Quality Enterprises:</b></p> <ul style="list-style-type: none"> <li>• Contractor has a barge, an excavator, and a hopper staged in Canal BB-BB at station 3+00. Contractor also has a hopper staged in Canal CC-CC between stations 1+00 and 1+50. In addition, Contractor has a long-reach excavator, a water tank, and two fuel cubes staged on the property located at 1300 Curlew Avenue, Naples, FL, 34102.</li> <li>• Contractor used support boat to install turbidity curtain across the mouth of Canal BB-BB as well as to open and close it as necessary for push boat to enter canal with empty hoppers and to exit canal with full hoppers.</li> <li>• Contractor used 323 excavator to remove 5 hoppers of material from Canal BB-BB.</li> <li>• Contractor used push boat to position barge as necessary for removing material as well as to transport full hoppers of material to Canal CC-CC and empty hoppers back to Canal BB-BB.</li> <li>• Contractor used 326 excavator to transfer 5 hoppers of removed material from hoppers to dewatering site at 1300 Curlew Avenue.</li> </ul>

Contractor(s) and Personnel										
#	Name	Type	#	Hrs.	Type	#	Hrs.	Type	#	Hrs.
1	Prime: <b>Quality Enterprises</b>	PM	0	0	Boat Captain	1	9	Mechanic	0	0
		Excavator Operator	2	9	Truck Driver	0	0	Assistant	1	9
		Technician	0	0	Superintendent	0	0	VP	0	0

Equipment					
Cont/ Sub #	Equipment ID	Description	# Pieces	# Used	Total Hours Used
1	N/A	Barge	1	1	9
1	CAT 323	Excavator	1	1	8
1	CAT 326	Excavator	1	1	4
1	02016	Front End Loader	0	0	0
1	FL6223TB	Push Boat	1	1	9
1	FL2474PP	Support Boat	1	1	4
1	N3758Z	Fuel Truck	0	0	0
1	P9457E	Water Truck	0	0	0
1	725RZM	Water Tank	1	0	0
1	Z68EAZ	Small Dump truck	0	0	0
1	PB727E	Small Dump truck	0	0	0
1	Z67EAZ	Trash Truck	0	0	0
1	MB27DQ	Dump truck	0	0	0
1	MB8DQ	Dump truck	0	0	0
1	MB30DQ	Utility Truck	0	0	0
1	MB26DQ	Utility Truck	0	0	0
1	N9524Z	Transport Truck	0	0	0
1	044RTN	Welding Truck	0	0	0
1	N8105X	Crane Truck	0	0	0

Visitors			
Name	Company	Hours at Job Site	
		From:	To:

Inspector Name and Position	Hours at Job Site/Office		Total Hours
Sam Boyd, EIT	From: 8:30 AM	To: 4:30 PM	8.0

W

270

NW

300

330

N

0

30

☀ 322°NW (T) ● 26°8'8"N, 81°47'14"W ±36ft ▲ 9ft



03 Aug 2022, 08:47:25

Barge, 323 excavator, hopper, and push boat between stations 2+00 and 3+00



Push boat transporting full hopper of removed material from Canal BB-BB to Canal CC-CC



☉ 344°N (T) ☉ 26°8'8"N, 81°47'14"W ±13ft ▲ 8ft



03 Aug 2022, 09:42:21

323 excavator removing material from station 3+00

W 270 NW 300 33 N 0 30  
☉ 332°NW (T) ☉ 26°8'8"N, 81°47'15"W ±19ft ▲ 9ft



323 excavator removing material from station 3+00 and transferring to hopper





Push boat dropping off full hopper of removed material in Canal CC-CC



☉ 182°S (T) ☉ 26°8'14"N, 81°47'16"W ±42ft ▲ 8ft



03 Aug 2022, 10:10:02

326 excavator transferring removed material from hopper to dewatering site at 1300 Curlew Avenue

W NW N  
40 270 300 330 0

☉ 310°NW (T) ☉ 26°8'8"N, 81°47'15"W ±13ft ▲ 10ft



03 Aug 2022, 11:30:49

323 excavator lifting spud to allow push boat to mobilize barge at station 2+00

E 90 SE 120 150 S 180  
☀ 135°SE (T) ● 26°8'13"N, 81°47'16"W ±32ft ▲ 8ft



Push boat dropping off full hopper of removed material in Canal CC-CC

N 70 300 NW 330 N 0 30 NE  
☀ 341°N (T) ☉ 26°8'8"N, 81°47'15"W ±13ft ▲ 10ft



03 Aug 2022 14:10:42

323 excavator removing material from station 1+50

W 270 300 NW 330 N 0  
☀ 315°NW (T) ☉ 26°8'8"N, 81°47'16"W ±36ft ▲ 8ft



323 excavator lifting spud to allow push boat to mobilize barge at station 0+75



**DAILY REPORT OF CONSTRUCTION**  
 21-036 EAST NAPLES BAY  
 DREDGING AND ROCK REMOVAL PROJECT



Date: <b>08/04/2022</b>			
Inspectors: <b>SB</b>	Stantec PIN: <b>2028113191</b>		Accidents <input type="checkbox"/> Yes <input checked="" type="checkbox"/> No
Day of Week: <b>Thursday</b>	Contract Day: <b>291/365</b>	Week: <b>42</b>	Accident Report #: <b>N/A</b>
High Temp (°F): <b>89°F</b>	AM Conditions: <b>Sunny</b>	PM Conditions: <b>Cloudy</b>	High Tide: <b>6:52 PM +2.3'</b>
Low Temp (°F): <b>73°F</b>	Wind: <b>9 mph</b>	Wind: <b>5 mph</b>	Low Tide: <b>12:57 PM +0.8'</b>
Canal Worked In: <b>BB-BB/X-X</b>	Stations Worked Between:	<b>0+00 to 1+00 / 4+50 to 4+25</b>	

**General**

**#1 – Prime Contractor – Quality Enterprises:**

- Contractor has a barge, an excavator, and a hopper staged in Canal BB-BB at station 1+00. Contractor also has a hopper staged in Canal CC-CC between stations 1+00 and 1+50. In addition, Contractor has a long-reach excavator, a water tank, and two fuel cubes staged on the property located at 1300 Curlew Avenue, Naples, FL, 34102.
- Contractor used support boat to install turbidity curtain across the mouth of Canal BB-BB as well as to open and close it as necessary for push boat to enter canal with empty hoppers and to exit canal with full hoppers.
- Contractor used 323 excavator to remove 2 hoppers of material from Canal BB-BB.
- Contractor used push boat to position barge as necessary for removing material as well as to transport full hoppers of material to Canal CC-CC and empty hoppers back to Canal BB-BB.
- Contractor used 326 excavator to transfer 2 hoppers of removed material from hoppers to dewatering site at 1300 Curlew Avenue.
- Contractor used push boat to transport barge, 323 excavator, and hopper from Canal BB-BB to Canal X-X.
- Morgan & Eklund boat surveyed Canal BB-BB.
- Contractor used support boat to install turbidity curtain across the mouth of Canal X-X.
- Contractor used 323 to removed material between stations 4+50 and 4+25.
- Contractor used push boat to position barge as necessary for removing material.

Contractor(s) and Personnel										
#	Name	Type	#	Hrs.	Type	#	Hrs.	Type	#	Hrs.
1	Prime: <b>Quality Enterprises</b>	PM	0	0	Boat Captain	1	9	Mechanic	0	0
		Excavator Operator	2	9	Truck Driver	0	0	Assistant	1	9
		Technician	0	0	Superintendent	0	0	VP	0	0

Equipment					
Cont/ Sub #	Equipment ID	Description	# Pieces	# Used	Total Hours Used
1	N/A	Barge	1	1	7
1	CAT 323	Excavator	1	1	7
1	CAT 326	Excavator	1	1	3
1	02016	Front End Loader	0	0	0
1	FL6223TB	Push Boat	1	1	8
1	FL2474PP	Support Boat	1	1	4
1	N3758Z	Fuel Truck	0	0	0
1	P9457E	Water Truck	0	0	0
1	725RZM	Water Tank	1	0	0
1	Z68EAZ	Small Dump truck	0	0	0
1	PB727E	Small Dump truck	0	0	0
1	Z67EAZ	Trash Truck	0	0	0
1	MB27DQ	Dump truck	0	0	0
1	MB8DQ	Dump truck	0	0	0
1	MB30DQ	Utility Truck	0	0	0
1	MB26DQ	Utility Truck	0	0	0
1	N9524Z	Transport Truck	0	0	0
1	044RTN	Welding Truck	0	0	0
1	N8105X	Crane Truck	0	0	0

Visitors			
Name	Company	Hours at Job Site	
		From:	To:

Inspector Name and Position	Hours at Job Site/Office		Total Hours
Sam Boyd, EIT	From: 8:30 AM	To: 4:30 PM	8.0





☀ 310°NW (T)    ● 26°8'7"N, 81°47'16"W ±22ft    ▲ 8ft



04 Aug 2022, 08:50:08

323 excavator removing material from station 0+50 in Canal BB-BB



☉ 297°NW (T) ☉ 26°8'8"N, 81°47'16"W ±13ft ▲ 9ft



323 excavator removing material from station 0+50 and transferring to hopper in Canal BB-BB



☉ 209°SW (T) ● 26°8'13"N, 81°47'16"W ±22ft ▲ 9ft



04 Aug 2022, 13:25:05

Push boat transporting empty hopper from Canal CC-CC to Canal X-X

W 270      NW 300      N 0      N 30

☉ 334°NW (T)    ☉ 26°8'4"N, 81°47'11"W ±39ft    ▲ 8ft



04 Aug 2022, 13:52:10

323 excavator removing material from station 4+50 in Canal X-X



☀ 305°NW (T) ● 26°8'4"N, 81°47'14"W ±13ft ▲ 13ft



04 Aug 2022, 13:53:02

Turbidity curtain installed across the mouth of Canal X-X



**DAILY REPORT OF CONSTRUCTION**  
 21-036 EAST NAPLES BAY  
 DREDGING AND ROCK REMOVAL PROJECT



Date: <b>08/05/2022</b>			
Inspectors: <b>SB</b>	Stantec PIN: <b>2028113191</b>		Accidents <input type="checkbox"/> Yes <input checked="" type="checkbox"/> No
Day of Week: <b>Friday</b>	Contract Day: <b>292/365</b>	Week: <b>42</b>	Accident Report #: <b>N/A</b>
High Temp (°F): <b>89°F</b>	AM Conditions: <b>Sunny</b>	PM Conditions: <b>Cloudy</b>	High Tide: <b>6:35 AM +2.7'</b>
Low Temp (°F): <b>75°F</b>	Wind: <b>7 mph</b>	Wind: <b>0 mph</b>	Low Tide: <b>2:12 PM +0.6'</b>
Canal Worked In: <b>X-X</b>	Stations Worked Between:	<b>3+00 to 4+00</b>	

<b>General</b>
<p><b>#1 – Prime Contractor – Quality Enterprises:</b></p> <ul style="list-style-type: none"> <li>• Contractor has a barge, an excavator, and a hopper staged in Canal X-X at station 4+00. Contractor also has a hopper staged in Canal CC-CC between stations 1+00 and 1+50. In addition, Contractor has a long-reach excavator, a water tank, and two fuel cubes staged on the property located at 1300 Curlew Avenue, Naples, FL, 34102.</li> <li>• Contractor used support boat to install turbidity curtain across the mouth of Canal X-X as well as to open and close it as necessary for push boat to enter canal with empty hoppers and to exit canal with full hoppers.</li> <li>• Contractor used 323 excavator to remove 2 hoppers of material from Canal X-X.</li> <li>• Contractor used push boat to position barge as necessary for removing material as well as to transport full hoppers of material to Canal CC-CC and empty hoppers back to Canal X-X.</li> <li>• Contractor used 326 excavator to transfer 2 hoppers of removed material from hoppers to dewatering site at 1300 Curlew Avenue.</li> <li>• Dump trucks came to site at 1300 Curlew Avenue.</li> <li>• Contractor used 326 excavator to transfer removed material from dewatering site to dump truck beds.</li> <li>• Dump trucks took material off site.</li> <li>• Contractor used push boat to transport barge, 323 excavator, and hopper from Canal X-X to Canal CC-CC.</li> <li>• Contractor used fuel cube to refuel 323 excavator.</li> </ul>

Contractor(s) and Personnel										
#	Name	Type	#	Hrs.	Type	#	Hrs.	Type	#	Hrs.
1	Prime: <b>Quality Enterprises</b>	PM	0	0	Boat Captain	1	9	Mechanic	0	0
		Excavator Operator	2	9	Truck Driver	2	6	Assistant	1	9
		Technician	0	0	Superintendent	0	0	VP	0	0

Equipment					
Cont/ Sub #	Equipment ID	Description	# Pieces	# Used	Total Hours Used
1	N/A	Barge	1	1	7
1	CAT 323	Excavator	1	1	7
1	CAT 326	Excavator	1	1	4
1	02016	Front End Loader	0	0	0
1	FL6223TB	Push Boat	1	1	7
1	FL2474PP	Support Boat	1	1	3
1	N3758Z	Fuel Truck	0	0	0
1	P9457E	Water Truck	0	0	0
1	725RZM	Water Tank	1	0	0
1	Z68EAZ	Small Dump truck	1	1	6
1	PB727E	Small Dump truck	1	1	6
1	Z67EAZ	Trash Truck	0	0	0
1	MB27DQ	Dump truck	0	0	0
1	MB8DQ	Dump truck	0	0	0
1	MB30DQ	Utility Truck	0	0	0
1	MB26DQ	Utility Truck	0	0	0
1	N9524Z	Transport Truck	0	0	0
1	044RTN	Welding Truck	0	0	0
1	N8105X	Crane Truck	0	0	0

Visitors			
Name	Company	Hours at Job Site	
		From:	To:

Inspector Name and Position	Hours at Job Site/Office		Total Hours
Sam Boyd, EIT	From: 8:30 AM	To: 4:30 PM	8.0



☉ 328°NW (T) ☉ 26°8'4"N, 81°47'12"W ±13ft ▲ 8ft



05 Aug 2022, 08:34:50

323 excavator removing material from station 4+00



W 270 NW 300 30 N 0 30  
☉ 328°NW (T) ☉ 26°8'4"N, 81°47'12"W ±13ft ▲ 9ft



323 excavator removing material from station 4+00 and transferring to hopper

W NW N  
240 270 300 330 0  
☀ 301°NW (T) ☉ 26°8'4"N, 81°47'14"W ±19ft ▲ 8ft



Turbidity curtain installed across the mouth of Canal X-X



☀ 194°S (T) ☉ 26°8'5"N, 81°47'12"W ±13ft ▲ 10ft



323 excavator lifting spud to allow push boat to mobilize barge at station 3+50



☉ 230°SW (T) ☉ 26°8'13"N, 81°47'15"W ±45ft ▲ 8ft



05 Aug 2022, 10:19:46

Push boat dropping off full hopper of removed material in Canal CC-CC



☀ 167°S (T) ● 26°8'14"N, 81°47'16"W ±13ft ▲ 8ft



326 excavator transferring removed material from hopper to dewatering site at 1300 Curlew Avenue

S 180 SW 210 W 270  
50 180 210 240 270  
☀ 221°SW (T) ● 26°8'15"N, 81°47'15"W ±22ft ▲ 8ft



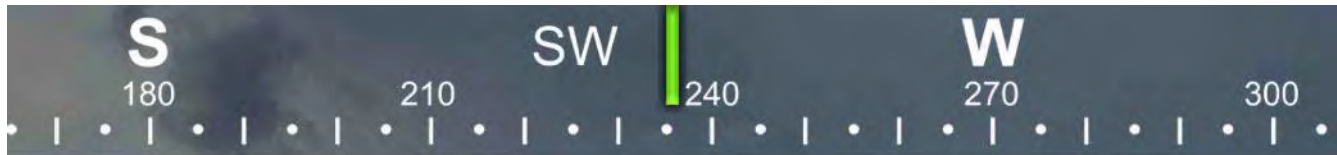
326 excavator transferring removed material from dewatering site to dump truck bed at 1300 Curlew Avenue



☉ 236°SW (T) ● 26°8'5"N, 81°47'13"W ±22ft ▲ 8ft



323 excavator lifting spud to allow push boat to mobilize barge at station 2+50



☉ 236°SW (T) ● 26°8'13"N, 81°47'16"W ±42ft ▲ 8ft



**Barge, 323 excavator, and 2 hoppers staged in Canal CC-CC between stations 1+00 and 2+00**