



WEEKLY SUMMARY REPORT – CONTRACT WEEK 40

21-036 EAST NAPLES BAY

DREDGING AND ROCK REMOVAL PROJECT



Date: 7/18/2022 to 7/22/2022			
Inspectors: Sam Boyd	Stantec PIN: 2028113191	Accidents <input type="checkbox"/> Yes <input checked="" type="checkbox"/> No	
Days of Week: Monday to Friday	Contract Days: 274 to 278	Total Days: 365	Accident Report #: N/A
Canal(s) Worked In: BB-BB	Stations Worked Between: 0+00 to 2+50 and 8+00 to 11+50		

General

Remarks

#1 – Prime Contractor – Quality Enterprises:

Monday 07-18-2022:

- Contractor has a barge, an excavator, and 2 hoppers stationed between stations 1+00 and 2+00. In addition, Contractor has a support boat, a long-reach excavator, a water tank, and two fuel cubes staged on the property located at 1300 Curlew Avenue, Naples, FL, 34102.
- Contractor used push boat to transport barge, 323 excavator, and hopper from Canal CC-CC to Canal BB-BB.
- Contractor installed turbidity curtain across the mouth of Canal BB-BB.
- Contractor used 323 excavator to remove 4 hoppers of material between stations 0+00 and 2+50.
- Contractor used push boat to position barge as necessary for removing material as well as to transport full hoppers of material to Canal CC-CC and empty hoppers of material to Canal BB-BB.
- Contractor used 326 excavator to transfer 4 hoppers of material from hopper to dewatering site at 1300 Curlew Avenue as well as to redistribute removed material at the dewatering site.
- Morgan and Eklund boat surveyed southern Canals.

Tuesday 07-19-2022:

- Contractor has a barge and an excavator staged in Canal BB-BB at station 2+50. Contractor also has 2 hoppers staged in Canal CC-CC between stations 1+00 and 2+00. In addition, Contractor has a support boat, a long-reach excavator, a water tank, and two fuel cubes staged on the property located at 1300 Curlew Avenue, Naples, FL, 34102.
- Dump trucks came to site at 1300 Curlew Avenue.
- Contractor used 326 excavator to transfer removed material from dewatering site to dump truck beds at 1300 Curlew Avenue.
- Dump trucks took material off site.
- Contractor used push boat to transport barge, 323 excavator, and hopper from station 2+50 to 11+50.
- Contractor installed turbidity curtain across the mouth of Canal BB-BB.
- Contractor used 323 excavator to remove 4 hoppers of material between stations 10+50 and 11+50.
- Contractor used push boat to position barge as necessary for removing material as well as to transport full hoppers of material to Canal CC-CC and empty hoppers of material to Canal BB-BB.
- Contractor used 326 excavator to transfer 4 hoppers of material from hopper to dewatering site at 1300 Curlew



WEEKLY SUMMARY REPORT – CONTRACT WEEK 40

21-036 EAST NAPLES BAY

DREDGING AND ROCK REMOVAL PROJECT



Avenue as well as to redistribute removed material at the dewatering site.

- Morgan and Eklund boat surveyed southern Canals.

Wednesday 07-20-2022:

- Contractor has a barge and an excavator staged in Canal BB-BB at station 10+50. Contractor also has 2 hoppers staged in Canal CC-CC between stations 1+00 and 2+00. In addition, Contractor has a support boat, a long-reach excavator, a water tank, and two fuel cubes staged on the property located at 1300 Curlew Avenue, Naples, FL, 34102.
- Dump truck came to site at 1300 Curlew Avenue.
- Contractor used 326 excavator to transfer removed material from dewatering site to dump truck bed at 1300 Curlew Avenue.
- Dump truck took material off site.
- Contractor installed turbidity curtain across the mouth of Canal BB-BB.
- Contractor used 323 excavator to remove 3 hoppers of material between stations 9+00 and 10+50.
- Contractor used push boat to position barge as necessary for removing material as well as to transport full hoppers of material to Canal CC-CC and empty hoppers of material to Canal BB-BB.
- Contractor used 326 excavator to transfer 3 hoppers of material from hopper to dewatering site at 1300 Curlew Avenue as well as to redistribute removed material at the dewatering site.

Thursday 07-21-2022:

- Contractor has a barge, an excavator, and a hopper staged in Canal BB-BB at station 9+00. Contractor also has a hopper staged in Canal CC-CC between stations 1+00 and 2+00. In addition, Contractor has a support boat, a long-reach excavator, a water tank, and two fuel cubes staged on the property located at 1300 Curlew Avenue, Naples, FL, 34102.
- Contractor installed turbidity curtain across the mouth of Canal BB-BB.
- Contractor used 323 excavator to remove 4 hoppers of material between stations 8+00 and 9+00.
- Contractor used push boat to position barge as necessary for removing material as well as to transport full hoppers of material to Canal CC-CC and empty hoppers of material to Canal BB-BB.
- Contractor used 326 excavator to transfer 3 hoppers of material from hopper to dewatering site at 1300 Curlew Avenue as well as to redistribute removed material at the dewatering site.
- Push boat was used to transport barge, 323 excavator, and hopper back to Canal CC-CC. 2 hoppers, barge, and 323 excavator are staged in Canal CC-CC between stations 1+00 and 2+00
- 326 excavator was used to transport support boat from 1300 Curlew Avenue to the water.
- Push boat took support boat to the city boat yard for service.

Friday 07-22-2022:

- Contractor has a barge, an excavator, and 2 hoppers staged in Canal CC-CC between stations 1+00 and 2+00. In addition, Contractor has a long-reach excavator, a water tank, and two fuel cubes staged on the property



WEEKLY SUMMARY REPORT – CONTRACT WEEK 40
21-036 EAST NAPLES BAY
DREDGING AND ROCK REMOVAL PROJECT



located at 1300 Curlew Avenue, Naples, FL, 34102.

- Contractor greased 323 and 326 excavators.
- Contractor used 326 excavator to redistributed removed material at dewatering site at 1300 Curlew Avenue.
- Contractor inspected boats in Canal W-W.

Note: Daily reports with pictures attached for the week.



DAILY REPORT OF CONSTRUCTION
 21-036 EAST NAPLES BAY
 DREDGING AND ROCK REMOVAL PROJECT



Date: 07/18/2022			
Inspectors: SB	Stantec PIN: 2028113191	Accidents <input type="checkbox"/> Yes <input checked="" type="checkbox"/> No	
Day of Week: Monday	Contract Day: 274/365	Week: 40	Accident Report #: N/A
High Temp (°F): 93°F	AM Conditions: Sunny	PM Conditions: Sunny	High Tide: 5:49 AM +2.5'
Low Temp (°F): 77°F	Wind: 7 mph	Wind: 14 mph	Low Tide: 11:41 AM +1.0'
Canal Worked In: BB-BB	Stations Worked Between:	0+00 to 2+50	

General
<p>#1 – Prime Contractor – Quality Enterprises:</p> <ul style="list-style-type: none"> • Contractor has a barge, an excavator, and 2 hoppers stationed between stations 1+00 and 2+00. In addition, Contractor has a support boat, a long-reach excavator, a water tank, and two fuel cubes staged on the property located at 1300 Curlew Avenue, Naples, FL, 34102. • Contractor used push boat to transport barge, 323 excavator, and hopper from Canal CC-CC to Canal BB-BB. • Contractor installed turbidity curtain across the mouth of Canal BB-BB. • Contractor used 323 excavator to remove 4 hoppers of material between stations 0+00 and 2+50. • Contractor used push boat to position barge as necessary for removing material as well as to transport full hoppers of material to Canal CC-CC and empty hoppers of material to Canal BB-BB. • Contractor used 326 excavator to transfer 4 hoppers of material from hopper to dewatering site at 1300 Curlew Avenue as well as to redistribute removed material at the dewatering site. • Morgan and Eklund boat surveyed southern Canals.

Contractor(s) and Personnel										
#	Name	Type	#	Hrs.	Type	#	Hrs.	Type	#	Hrs.
1	Prime: Quality Enterprises	PM	0	0	Boat Captain	1	9	Mechanic	0	0
		Excavator Operator	2	9	Truck Driver	0	0	Assistant	1	9
		Technician	0	0	Superintendent	0	0	VP	0	0

Equipment					
Cont/ Sub #	Equipment ID	Description	# Pieces	# Used	Total Hours Used
1	N/A	Barge	1	1	9
1	CAT 323	Excavator	1	1	9
1	CAT 326	Excavator	1	1	4
1	02016	Front End Loader	0	0	0
1	FL6223TB	Push Boat	1	1	9
1	FL2474PP	Support Boat	1	0	0
1	N3758Z	Fuel Truck	0	0	0
1	P9457E	Water Truck	0	0	0
1	725RZM	Water Tank	1	0	0
1	Z68EAZ	Small Dump truck	0	0	0
1	PB727E	Small Dump truck	0	0	0
1	Z67EAZ	Trash Truck	1	0	0
1	MB27DQ	Dump truck	0	0	0
1	MB8DQ	Dump truck	0	0	0
1	MB30DQ	Utility Truck	0	0	0
1	MB26DQ	Utility Truck	0	0	0
1	N9524Z	Transport Truck	0	0	0
1	044RTN	Welding Truck	0	0	0
1	N8105X	Crane Truck	0	0	0

Visitors			
Name	Company	Hours at Job Site	
		From:	To:

Inspector Name and Position	Hours at Job Site/Office		Total Hours
Sam Boyd, EIT	From: 8:45 AM	To: 4:45 PM	8.0

SW 240 W 270 NW 330 N 0

☉ 291°W (T) ☉ 26°8'7"N, 81°47'16"W ±16ft ▲ 9ft



18 Jul 2022, 09:05:16

Push boat installing turbidity curtain across the mouth of Canal BB-BB

W NW N
240 270 300 330 0
307°NW (T) 26°8'8"N, 81°47'16"W ±26ft ▲ 8ft



323 excavator removing material from station 0+00

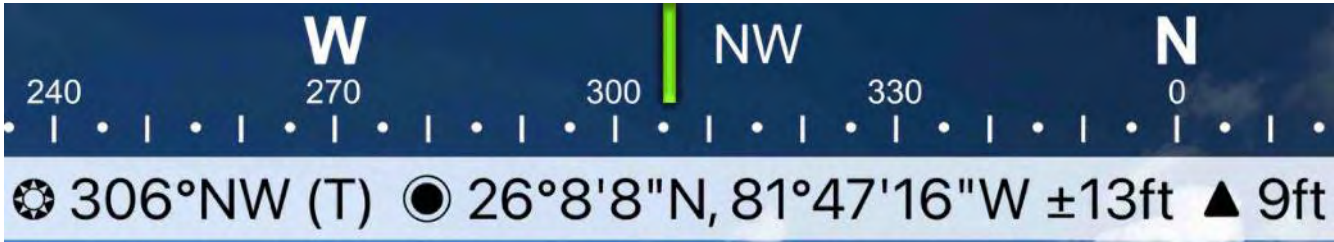


☉ 295°NW (T) ● 26°8'13"N, 81°47'21"W ±298ft ▲ 8ft



18 Jul 2022, 10:04:09

323 excavator lifting spud to allow push boat to mobilize barge at station 0+00



18 Jul 2022, 10:39:15

323 excavator removing material from station 0+50

S 180 SW 210 240 W 270 300 NW
☉ 245°SW (T) ☉ 26°8'13"N, 81°47'15"W ±29ft ▲ 9ft



Push boat dropping off full hopper of removed material in Canal CC-CC and picking up empty hopper



☀ 167°S (T) ● 26°8'14"N, 81°47'16"W ±13ft ▲ 9ft



326 excavator transferring removed material from hopper to dewatering site at 1300 Curlew Avenue



☉ 347°N (T) ☉ 26°8'8"N, 81°47'16"W ±22ft ▲ 8ft



323 excavator removing material from station 1+50



☀ 31°NE (T) ● 26°8'8"N, 81°47'16"W ±19ft ▲ 9ft



18 Jul 2022 15:37:23

323 excavator removing material from station 2+00 and transferring to hopper



DAILY REPORT OF CONSTRUCTION
 21-036 EAST NAPLES BAY
 DREDGING AND ROCK REMOVAL PROJECT



Date: 07/19/2022			
Inspectors: SB	Stantec PIN: 2028113191	Accidents <input type="checkbox"/> Yes <input checked="" type="checkbox"/> No	
Day of Week: Tuesday	Contract Day: 275/365	Week: 40	Accident Report #: N/A
High Temp (°F): 90°F	AM Conditions: Sunny	PM Conditions: Sunny	High Tide: 6:30 AM +2.6'
Low Temp (°F): 78°F	Wind: 7 mph	Wind: 13 mph	Low Tide: 12:49 PM +0.9'
Canal Worked In: BB-BB	Stations Worked Between:	10+50 to 11+50	

General

#1 – Prime Contractor – Quality Enterprises:

- Contractor has a barge and an excavator staged in Canal BB-BB at station 2+50. Contractor also has 2 hoppers staged in Canal CC-CC between stations 1+00 and 2+00. In addition, Contractor has a support boat, a long-reach excavator, a water tank, and two fuel cubes staged on the property located at 1300 Curlew Avenue, Naples, FL, 34102.
- Dump trucks came to site at 1300 Curlew Avenue.
- Contractor used 326 excavator to transfer removed material from dewatering site to dump truck beds at 1300 Curlew Avenue.
- Dump trucks took material off site.
- Contractor used push boat to transport barge, 323 excavator, and hopper from station 2+50 to 11+50.
- Contractor installed turbidity curtain across the mouth of Canal BB-BB.
- Contractor used 323 excavator to remove 4 hoppers of material between stations 10+50 and 11+50.
- Contractor used push boat to position barge as necessary for removing material as well as to transport full hoppers of material to Canal CC-CC and empty hoppers of material to Canal BB-BB.
- Contractor used 326 excavator to transfer 4 hoppers of material from hopper to dewatering site at 1300 Curlew Avenue as well as to redistribute removed material at the dewatering site.
- Morgan and Eklund boat surveyed southern Canals.

Contractor(s) and Personnel										
#	Name	Type	#	Hrs.	Type	#	Hrs.	Type	#	Hrs.
1	Prime: Quality Enterprises	PM	0	0	Boat Captain	1	9	Mechanic	0	0
		Excavator Operator	2	9	Truck Driver	2	8	Assistant	1	9
		Technician	0	0	Superintendent	0	0	VP	0	0

Equipment					
Cont/ Sub #	Equipment ID	Description	# Pieces	# Used	Total Hours Used
1	N/A	Barge	1	1	9
1	CAT 323	Excavator	1	1	9
1	CAT 326	Excavator	1	1	7
1	02016	Front End Loader	0	0	0
1	FL6223TB	Push Boat	1	1	9
1	FL2474PP	Support Boat	1	0	0
1	N3758Z	Fuel Truck	0	0	0
1	P9457E	Water Truck	0	0	0
1	725RZM	Water Tank	1	0	0
1	Z68EAZ	Small Dump truck	0	0	0
1	PB727E	Small Dump truck	0	0	0
1	Z67EAZ	Trash Truck	1	0	0
1	MB27DQ	Dump truck	0	0	0
1	MB8DQ	Dump truck	0	0	0
1	MB30DQ	Utility Truck	0	0	0
1	MB26DQ	Utility Truck	0	0	0
1	N9524Z	Transport Truck	0	0	0
1	044RTN	Welding Truck	0	0	0
1	N8105X	Crane Truck	0	0	0

Visitors			
Name	Company	Hours at Job Site	
		From:	To:

Inspector Name and Position	Hours at Job Site/Office		Total Hours
Sam Boyd, EIT	From: 9:00 AM	To: 5:00 PM	8.0

W 270 NW 330 N 0
40 270 300 330 0
☉ 311°NW (T) ☉ 26°8'8"N, 81°47'15"W ±13ft ▲ 8ft



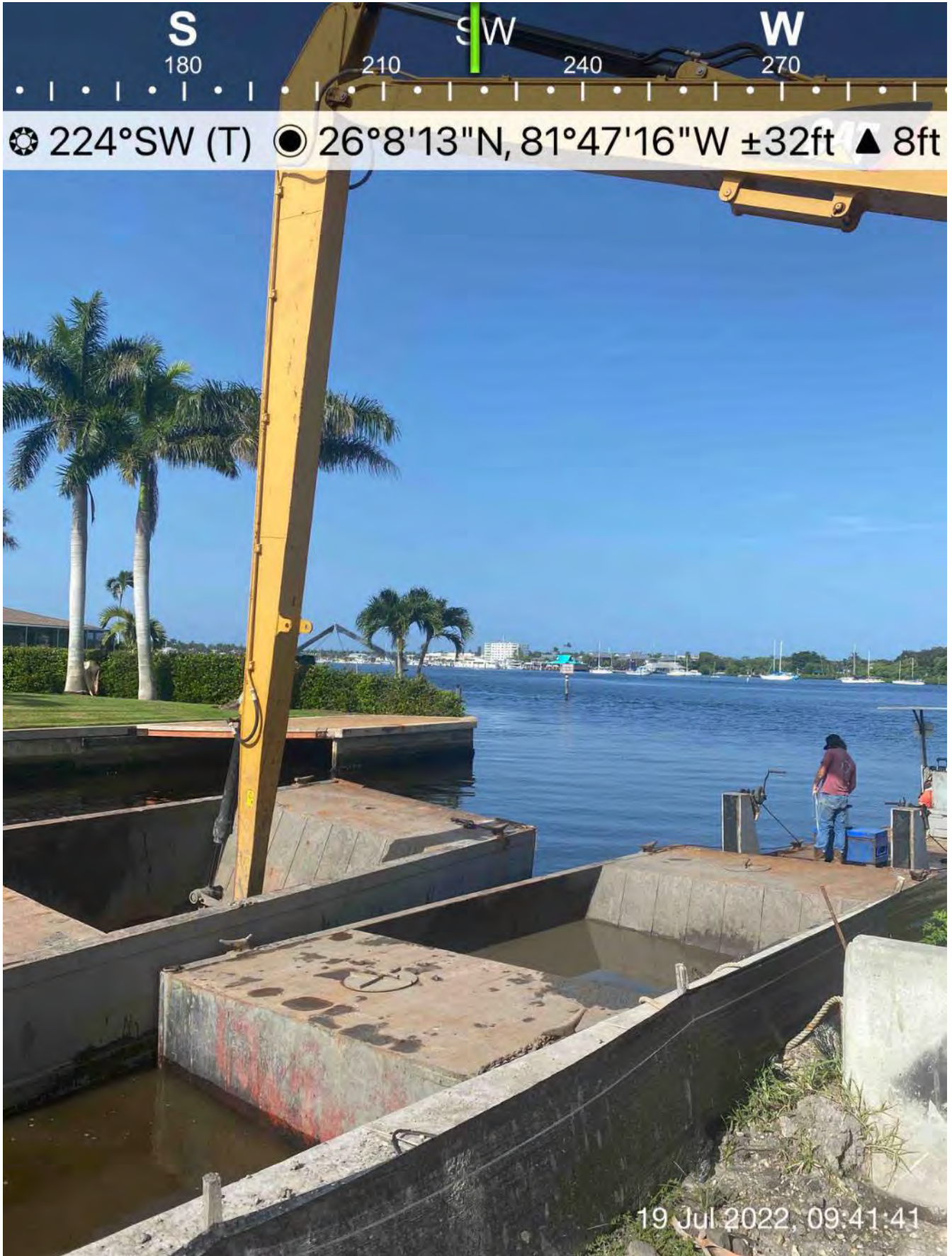
Push boat transporting full hopper of removed material from Canal BB-BB to Canal CC-CC

S 180 SW 210 240 W 270

☉ 226°SW (T) ☉ 26°8'14"N, 81°47'15"W ±19ft ▲ 8ft



326 excavator transporting removed material from dewatering site to dump truck bed



Push boat dropping off full hopper of removed material in Canal CC-CC



☀ 342°N (T) ● 26°8'8"N, 81°47'16"W ±36ft ▲ 8ft



Turbidity curtain installed across the mouth of Canal BB-BB



☀ 43°NE (T) ● 26°8'8"N, 81°47'6"W ±26ft ▲ 8ft



19 Jul 2022, 10:21:39

323 excavator removing material from station 11+25 and transferring to hopper



☀ 76°E (T) ● 26°8'14"N, 81°47'16"W ±26ft ▲ 8ft



Push boat transporting empty hopper of material from Canal BB-BB to Canal CC-CC



☀ 112°E (T) ● 26°8'13"N, 81°47'16"W ±19ft ▲ 8ft



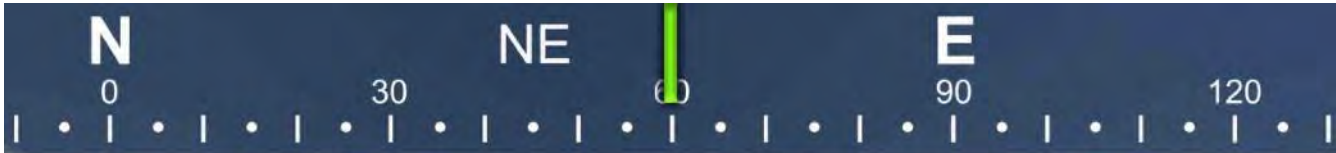
326 excavator transporting removed material from hopper to dewatering site at 1300 Curlew Avenue



☀ 5°N (T) ● 26°8'8"N, 81°47'7"W ±45ft ▲ 8ft



Morgan & Eklund boat in Canal BB-BB



☀ 60°NE (T) ● 26°8'8"N, 81°47'7"W ±36ft ▲ 8ft



19 Jul 2022, 14:58:09

Push boat transporting full hopper of removed material from Canal BB-BB to Canal CC-CC

SE S SW
120 150 180 210
☀ 162°S (T) ☉ 26°8'14"N, 81°47'16"W ±36ft ▲ 8ft



326 excavator transporting removed material from hopper to dewatering site at 1300 Curlew Avenue



DAILY REPORT OF CONSTRUCTION
 21-036 EAST NAPLES BAY
 DREDGING AND ROCK REMOVAL PROJECT



Date: 07/20/2022			
Inspectors: SB	Stantec PIN: 2028113191	Accidents <input type="checkbox"/> Yes <input checked="" type="checkbox"/> No	
Day of Week: Wednesday	Contract Day: 276/365	Week: 40	Accident Report #: N/A
High Temp (°F): 92°F	AM Conditions: Sunny	PM Conditions: Rainy	High Tide: 7:14 AM +2.6'
Low Temp (°F): 78°F	Wind: 5 mph	Wind: 18 mph	Low Tide: 2:01 PM +0.7'
Canal Worked In: BB-BB	Stations Worked Between:	9+00 to 10+50	

General
<p>#1 – Prime Contractor – Quality Enterprises:</p> <ul style="list-style-type: none"> • Contractor has a barge and an excavator staged in Canal BB-BB at station 10+50. Contractor also has 2 hoppers staged in Canal CC-CC between stations 1+00 and 2+00. In addition, Contractor has a support boat, a long-reach excavator, a water tank, and two fuel cubes staged on the property located at 1300 Curlew Avenue, Naples, FL, 34102. • Dump truck came to site at 1300 Curlew Avenue. • Contractor used 326 excavator to transfer removed material from dewatering site to dump truck bed at 1300 Curlew Avenue. • Dump truck took material off site. • Contractor installed turbidity curtain across the mouth of Canal BB-BB. • Contractor used 323 excavator to remove 3 hoppers of material between stations 9+00 and 10+50. • Contractor used push boat to position barge as necessary for removing material as well as to transport full hoppers of material to Canal CC-CC and empty hoppers of material to Canal BB-BB. • Contractor used 326 excavator to transfer 3 hoppers of material from hopper to dewatering site at 1300 Curlew Avenue as well as to redistribute removed material at the dewatering site.

Contractor(s) and Personnel										
#	Name	Type	#	Hrs.	Type	#	Hrs.	Type	#	Hrs.
1	Prime: Quality Enterprises	PM	0	0	Boat Captain	1	9	Mechanic	0	0
		Excavator Operator	2	9	Truck Driver	1	7	Assistant	1	9
		Technician	0	0	Superintendent	1	0.5	VP	0	0

Equipment					
Cont/ Sub #	Equipment ID	Description	# Pieces	# Used	Total Hours Used
1	N/A	Barge	1	1	8
1	CAT 323	Excavator	1	1	8
1	CAT 326	Excavator	1	1	4
1	02016	Front End Loader	0	0	0
1	FL6223TB	Push Boat	1	1	8
1	FL2474PP	Support Boat	1	0	0
1	N3758Z	Fuel Truck	0	0	0
1	P9457E	Water Truck	0	0	0
1	725RZM	Water Tank	1	0	0
1	Z68EAZ	Small Dump truck	0	0	0
1	PB727E	Small Dump truck	0	0	0
1	Z67EAZ	Trash Truck	1	0	0
1	MB27DQ	Dump truck	1	1	7
1	MB8DQ	Dump truck	0	0	0
1	MB30DQ	Utility Truck	0	0	0
1	MB26DQ	Utility Truck	0	0	0
1	N9524Z	Transport Truck	0	0	0
1	044RTN	Welding Truck	0	0	0
1	N8105X	Crane Truck	0	0	0

Visitors			
Name	Company	Hours at Job Site	
		From:	To:

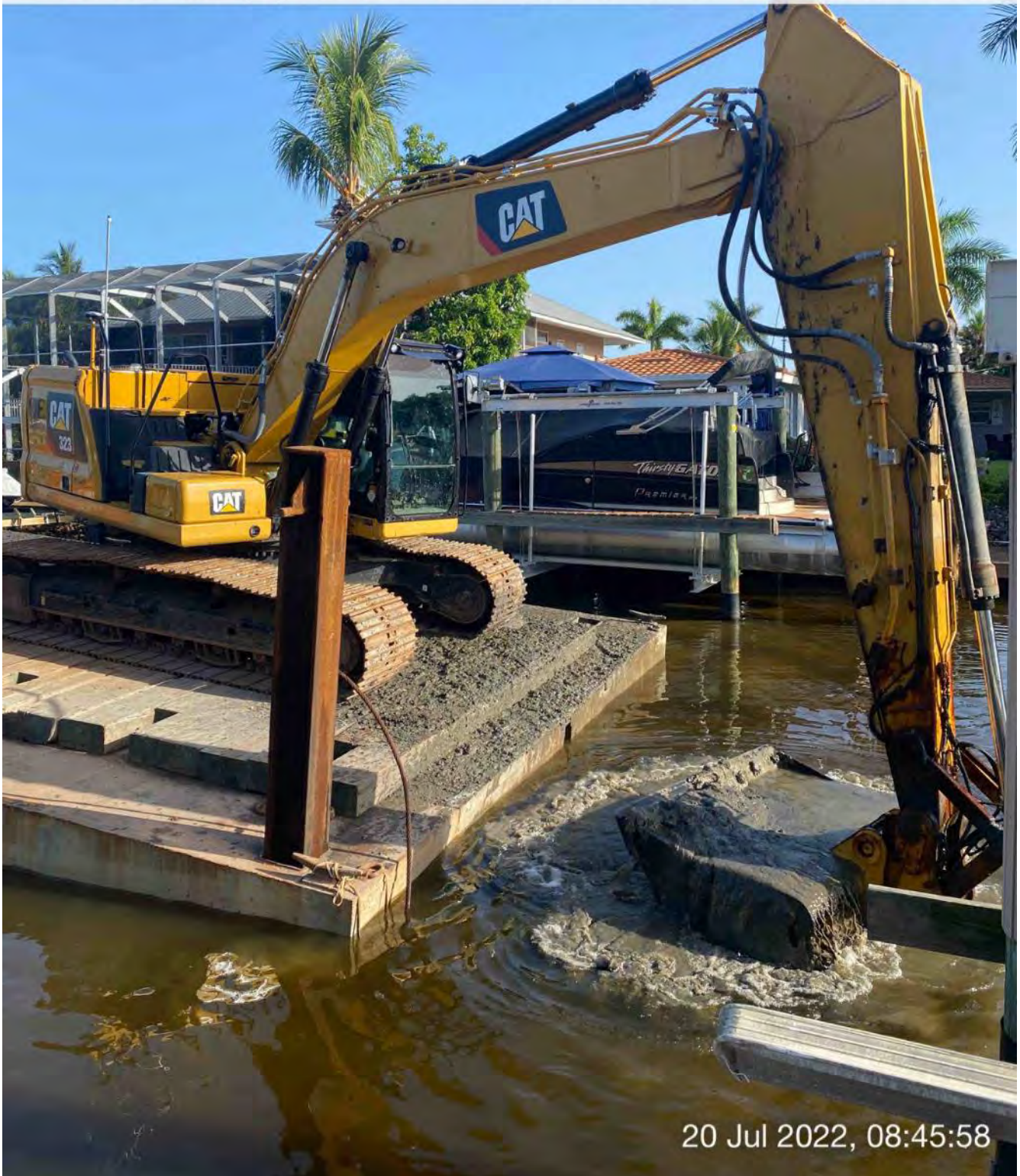
Inspector Name and Position	Hours at Job Site/Office		Total Hours
Sam Boyd, EIT	From: 8:30 AM	To: 4:30 PM	8.0



Turbidity Curtain installed across the mouth of Canal BB-BB



☀ 320°NW (T) ☉ 26°8'8"N, 81°47'6"W ±13ft ▲ 9ft



323 excavator removing material from station 10+50

S 180 SW 210 W 240 270
☀ 225°SW (T) ☉ 26°8'13"N, 81°47'16"W ±22ft ▲ 9ft



Push boat dropping off full hopper of material in Canal CC-CC

SE S SW
120 150 180 210 240
☉ 181°S (T) ☉ 26°8'14"N, 81°47'15"W ±13ft ▲ 9ft



326 excavator transporting removed material from hopper to dewatering site at 1300 Curlew Avenue

W 270 NW/ 300 N 0

☉ 318°NW (T) ● 26°8'8"N, 81°47'7"W ±13ft ▲ 10ft



323 excavator lifting spud to allow push boat to mobilize barge at station 10+00



☉ 227°SW (T) ☉ 26°8'14"N, 81°47'15"W ±13ft ▲ 9ft



326 excavator transferring removed material from dewatering site to dump truck bed at 1300 Curlew Avenue



☀ 320°NW (T) ● 26°8'8"N, 81°47'16"W ±36ft ▲ 8ft



20 Jul 2022 13:27:46

Push boat transporting full hopper of removed material from Canal BB-BB to Canal CC-CC



☀ 8°N (T) ☉ 26°8'8"N, 81°47'7"W ±13ft ▲ 6ft



20 Jul 2022, 14:06:10

323 excavator removing material from station 9+00



☀ 37°NE (T) ● 26°8'8"N, 81°47'16"W ±49ft ▲ 8ft



20 Jul 2022, 14:27:45

Turbidity curtain installed across the mouth of Canal BB-BB



☀ 131°SE (T) ☉ 26°8'13"N, 81°47'16"W ±29ft ▲ 8ft



Push boat dropping off full hopper of removed material in Canal CC-CC



DAILY REPORT OF CONSTRUCTION
 21-036 EAST NAPLES BAY
 DREDGING AND ROCK REMOVAL PROJECT



Date: 07/21/2022			
Inspectors: SB	Stantec PIN: 2028113191		Accidents <input type="checkbox"/> Yes <input checked="" type="checkbox"/> No
Day of Week: Thursday	Contract Day: 277/365	Week: 40	Accident Report #: N/A
High Temp (°F): 91°F	AM Conditions: Sunny	PM Conditions: Cloudy	High Tide: 8:00 AM +2.6'
Low Temp (°F): 78°F	Wind: 6 mph	Wind: 9 mph	Low Tide: 3:07 PM +0.6'
Canal Worked In: BB-BB	Stations Worked Between:	8+00 to 9+00	

General

#1 – Prime Contractor – Quality Enterprises:

- Contractor has a barge, an excavator, and a hopper staged in Canal BB-BB at station 9+00. Contractor also has a hopper staged in Canal CC-CC between stations 1+00 and 2+00. In addition, Contractor has a support boat, a long-reach excavator, a water tank, and two fuel cubes staged on the property located at 1300 Curlew Avenue, Naples, FL, 34102.
- Contractor installed turbidity curtain across the mouth of Canal BB-BB.
- Contractor used 323 excavator to remove 4 hoppers of material between stations 8+00 and 9+00.
- Contractor used push boat to position barge as necessary for removing material as well as to transport full hoppers of material to Canal CC-CC and empty hoppers of material to Canal BB-BB.
- Contractor used 326 excavator to transfer 3 hoppers of material from hopper to dewatering site at 1300 Curlew Avenue as well as to redistribute removed material at the dewatering site.
- Push boat was used to transport barge, 323 excavator, and hopper back to Canal CC-CC. 2 hoppers, barge, and 323 excavator are staged in Canal CC-CC between stations 1+00 and 2+00
- 326 excavator was used to transport support boat from 1300 Curlew Avenue to the water.
- Push boat took support boat to the city boat yard for service.

Contractor(s) and Personnel										
#	Name	Type	#	Hrs.	Type	#	Hrs.	Type	#	Hrs.
1	Prime: Quality Enterprises	PM	0	0	Boat Captain	1	9	Mechanic	0	0
		Excavator Operator	2	9	Truck Driver	0	0	Assistant	1	9
		Technician	0	0	Superintendent	0	0	VP	0	0

Equipment					
Cont/ Sub #	Equipment ID	Description	# Pieces	# Used	Total Hours Used
1	N/A	Barge	1	1	8
1	CAT 323	Excavator	1	1	8
1	CAT 326	Excavator	1	1	4
1	02016	Front End Loader	0	0	0
1	FL6223TB	Push Boat	1	1	9
1	FL2474PP	Support Boat	1	0	0
1	N3758Z	Fuel Truck	0	0	0
1	P9457E	Water Truck	0	0	0
1	725RZM	Water Tank	1	0	0
1	Z68EAZ	Small Dump truck	0	0	0
1	PB727E	Small Dump truck	0	0	0
1	Z67EAZ	Trash Truck	1	0	0
1	MB27DQ	Dump truck	0	0	0
1	MB8DQ	Dump truck	0	0	0
1	MB30DQ	Utility Truck	0	0	0
1	MB26DQ	Utility Truck	0	0	0
1	N9524Z	Transport Truck	0	0	0
1	044RTN	Welding Truck	0	0	0
1	N8105X	Crane Truck	0	0	0

Visitors			
Name	Company	Hours at Job Site	
		From:	To:

Inspector Name and Position	Hours at Job Site/Office		Total Hours
Sam Boyd, EIT	From: 8:30 AM	To: 4:30 PM	8.0



☉ 320°NW (T) ● 26°8'8"N, 81°47'7"W ±13ft ▲ 9ft



21 Jul 2022, 08:36:36

323 excavator removing material from station 9+00



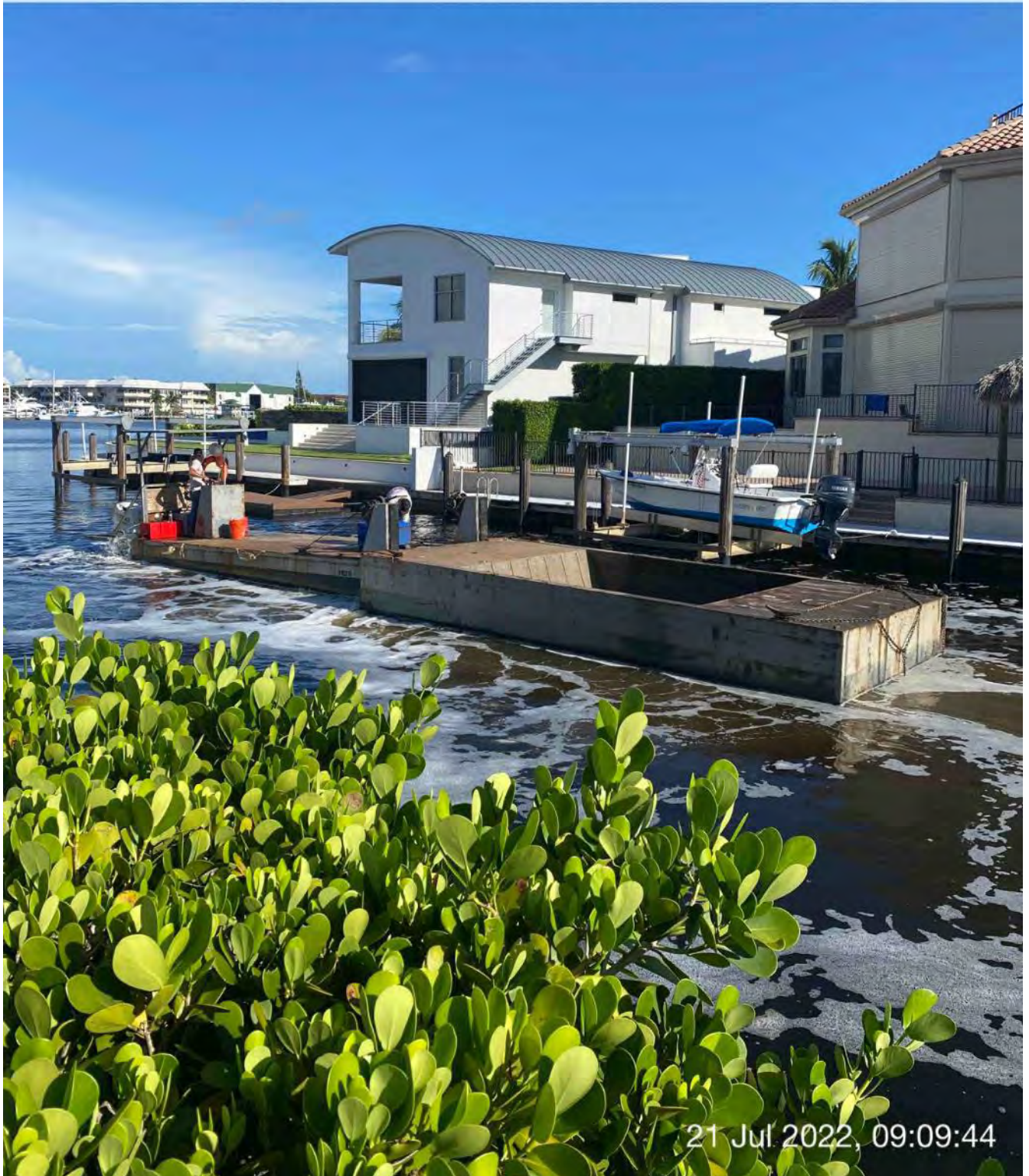
☀ 14°N (T) ● 26°8'8"N, 81°47'16"W ±22ft ▲ 0ft



Turbidity curtain installed across the mouth of Canal BB-BB



☀ 320°NW (T) ● 26°8'8"N, 81°47'14"W ±26ft ▲ 9ft



Push boat transporting full hopper of removed material from Canal BB-BB to Canal CC-CC

S 180 SW 210 240 W 270 300
☉ 229°SW (T) ☉ 26°8'14"N, 81°47'15"W ±29ft ▲ 8ft



326 excavator transporting removed material from hopper to dewatering site at 1300 Curlew Avenue

W NW N
240 270 300 330 0
304°NW (T) 26°8'8"N, 81°47'7"W ±29ft ▲ 8ft



21 Jul 2022, 10:52:53

323 excavator removing material from station 8+75



☉ 236°SW (T) ☉ 26°8'13"N, 81°47'16"W ±13ft ▲ 8ft



21 Jul 2022, 11:44:32

Push boat dropping off full hopper of removed material in Canal CC-CC



☉ 325°NW (T) ● 26°8'8"N, 81°47'16"W ±32ft ▲ 8ft



Push boat opening turbidity curtain



☉ 230°SW (T) ☉ 26°8'13"N, 81°47'16"W ±29ft ▲ 8ft



323 excavator lifting spud to allow push boat to transport barge from Canal BB-BB to Canal CC-CC



☀ 180°S (T) ● 26°8'14"N, 81°47'16"W ±22ft ▲ 8ft



326 excavator transporting support boat from 1300 Curlew Avenue to water



DAILY REPORT OF CONSTRUCTION
21-036 EAST NAPLES BAY
DREDGING AND ROCK REMOVAL PROJECT



Date: 07/22/2022			
Inspectors: SB	Stantec PIN: 2028113191	Accidents <input type="checkbox"/> Yes <input checked="" type="checkbox"/> No	
Day of Week: Friday	Contract Day: 278/365	Week: 40	Accident Report #: N/A
High Temp (°F): 90°F	AM Conditions: Sunny	PM Conditions: Cloudy	High Tide: 8:49 AM +2.7'
Low Temp (°F): 77°F	Wind: 3 mph	Wind: 11 mph	Low Tide: 4:08 PM +0.4'
Canal Worked In: N/A	Stations Worked Between:	N/A	

General
<p>#1 – Prime Contractor – Quality Enterprises:</p> <ul style="list-style-type: none">• Contractor has a barge, an excavator, and 2 hoppers staged in Canal CC-CC between stations 1+00 and 2+00. In addition, Contractor has a long-reach excavator, a water tank, and two fuel cubes staged on the property located at 1300 Curlew Avenue, Naples, FL, 34102.• Contractor greased 323 and 326 excavators.• Contractor used 326 excavator to redistributed removed material at dewatering site at 1300 Curlew Avenue.• Contractor inspected boats in Canal W-W.

Contractor(s) and Personnel										
#	Name	Type	#	Hrs.	Type	#	Hrs.	Type	#	Hrs.
1	Prime: Quality Enterprises	PM	0	0	Boat Captain	1	9	Mechanic	0	0
		Excavator Operator	1	9	Truck Driver	0	0	Assistant	1	9
		Technician	0	0	Superintendent	0	0	VP	0	0

Equipment					
Cont/ Sub #	Equipment ID	Description	# Pieces	# Used	Total Hours Used
1	N/A	Barge	1	1	2
1	CAT 323	Excavator	1	1	2
1	CAT 326	Excavator	1	1	2
1	02016	Front End Loader	0	0	0
1	FL6223TB	Push Boat	1	0	0
1	FL2474PP	Support Boat	1	0	0
1	N3758Z	Fuel Truck	0	0	0
1	P9457E	Water Truck	0	0	0
1	725RZM	Water Tank	1	0	0
1	Z68EAZ	Small Dump truck	0	0	0
1	PB727E	Small Dump truck	0	0	0
1	Z67EAZ	Trash Truck	1	0	0
1	MB27DQ	Dump truck	0	0	0
1	MB8DQ	Dump truck	0	0	0
1	MB30DQ	Utility Truck	0	0	0
1	MB26DQ	Utility Truck	0	0	0
1	N9524Z	Transport Truck	0	0	0
1	044RTN	Welding Truck	0	0	0
1	N8105X	Crane Truck	0	0	0

Visitors			
Name	Company	Hours at Job Site	
		From:	To:

Inspector Name and Position	Hours at Job Site/Office		Total Hours
Sam Boyd, EIT	From: 8:00 AM	To: 4:00 PM	8.0

SE S SW
120 150 180 210 240

☀ 183°S (T) ● 26°8'14"N, 81°47'15"W ±26ft ▲ 8ft



326 excavator redistributing removed material at dewatering site at 1300 Curlew Avenue

S 180 SW 210 240 W 270 NV 300
☀ 246°SW (T) ☉ 26°8'13"N, 81°47'15"W ±13ft ▲ 10ft



2 hoppers, barge, and 323 excavator staged in canal CC-CC between stations 1+00 and 2+00



☉ 26°NE (T) ☉ 26°8'14"N, 81°47'16"W ±36ft ▲ 8ft



326 excavator redistributing removed material at dewatering site at 1300 Curlew Avenue