



# WEEKLY SUMMARY REPORT – CONTRACT WEEK 38

21-036 EAST NAPLES BAY

## DREDGING AND ROCK REMOVAL PROJECT



Date: <b>7/4/2022 to 7/8/2022</b>			
Inspectors: <b>Sam Boyd</b>	Stantec PIN: <b>2028113191</b>	Accidents <input type="checkbox"/> Yes <input checked="" type="checkbox"/> No	
Days of Week: <b>Monday to Friday</b>	Contract Days: <b>260 to 264</b>	Total Days: <b>365</b>	Accident Report #: <b>N/A</b>
Canal(s) Worked In: <b>X-X</b>	Stations Worked Between: <b>0+00 to 3+25</b>		

### General

#### Remarks

#### **#1 – Prime Contractor – Quality Enterprises:**

##### Monday 07-04-2022:

- No work was performed due to 4<sup>th</sup> of July holiday.

##### Tuesday 07-05-2022:

- Contractor has a barge, an excavator, 2 hoppers, a push boat, and a support boat staged in Canal CC-CC between stations 1+00 and 2+00. In addition, Contractor has a long-reach excavator, a water tank, and two fuel cubes staged on the property located at 1300 Curlew Avenue, Naples, FL, 34102.
- Contractor used 326 excavator to redistribute removed material at dewatering site at 1300 Curlew Avenue.
- Contractor used 323 excavator to lift back end of push boat out of water in order to change the oil on the lower part of each motor.
- Contractor used small fuel cube to refuel 326 excavator.
- Contractor used push boat to transport barge, 323 excavator, and hopper from Canal CC-CC to Canal X-X.
- Contractor used support boat to install turbidity curtain across the mouth of Canal X-X and to remove it as necessary for push boat to enter and exit canal with hoppers.
- Contractor used 323 excavator to remove 3 hoppers of material between stations 2+50 and 3+25.
- Contractor used push boat to position barge as necessary for removing material as well as to transport full hoppers from Canal X-X to Canal CC-CC and empty hoppers from Canal CC-CC to Canal X-X.
- Contractor used 326 excavator to transfer removed material from hopper to dewatering site at 1300 Curlew Avenue as well as to redistribute removed material at dewatering site. Tuesday 07-05-2022:

##### Wednesday 07-06-2022:

- Contractor has a barge, an excavator and a hopper staged in Canal X-X at station 2+50. Contractor also has a hopper, a push boat, and a support boat staged in Canal CC-CC between stations 1+00 and 2+00. In addition, Contractor has a long-reach excavator, a water tank, and two fuel cubes staged on the property located at 1300 Curlew Avenue, Naples, FL, 34102.
- Dump truck came to site at 1300 Curlew Avenue.
- Contractor used 326 excavator to transport removed material from dewatering site to dump truck bed.
- Dump truck took material off site.
- Contractor used support boat to install turbidity curtain across the mouth of Canal X-X and to remove it as



## WEEKLY SUMMARY REPORT – CONTRACT WEEK 38

21-036 EAST NAPLES BAY

### DREDGING AND ROCK REMOVAL PROJECT



necessary for push boat to enter and exit canal with hoppers.

- Contractor used 323 excavator to remove 5 hoppers of material between stations 1+50 and 2+50.
- Contractor used push boat to position barge as necessary for removing material as well as to transport full hoppers from Canal X-X to Canal CC-CC and empty hoppers from Canal CC-CC to Canal X-X.
- Contractor used 326 excavator to transfer removed material from hopper to dewatering site at 1300 Curlew Avenue as well as to redistribute removed material at dewatering site.

#### Thursday 07-07-2022:

- Contractor has a barge, an excavator and a hopper staged in Canal X-X at station 1+50. Contractor also has a hopper, a push boat, and a support boat staged in Canal CC-CC between stations 1+00 and 2+00. In addition, Contractor has a long-reach excavator, a water tank, and two fuel cubes staged on the property located at 1300 Curlew Avenue, Naples, FL, 34102.
- Dump truck came to site at 1300 Curlew Avenue.
- Contractor used 326 excavator to transport removed material from dewatering site to dump truck bed.
- Dump truck took material off site.
- Dump truck brought stones to site and used 326 excavator to distribute them on site at 1300 Curlew Avenue.
- Contractor used support boat to install turbidity curtain across the mouth of Canal X-X and to remove it as necessary for push boat to enter and exit canal with hoppers.
- Contractor used 323 excavator to remove 5 hoppers of material between stations 0+50 and 1+50.
- Contractor used push boat to position barge as necessary for removing material as well as to transport full hoppers from Canal X-X to Canal CC-CC and empty hoppers from Canal CC-CC to Canal X-X.
- Contractor used 326 excavator to transfer removed material from hopper to dewatering site at 1300 Curlew Avenue as well as to redistribute removed material at dewatering site.
- Contractor moved barge, 323 excavator, turbidity curtain, and hopper outside the mouth of Canal X-X.

#### Friday 07-08-2022:

- Contractor has a barge, an excavator and a hopper staged outside the mouth of Canal X-X. Contractor also has a hopper, a push boat, and a support boat staged in Canal CC-CC between stations 1+00 and 2+00. In addition, Contractor has a long-reach excavator, a water tank, and two fuel cubes staged on the property located at 1300 Curlew Avenue, Naples, FL, 34102.
- Contractor used support boat to install turbidity curtain across the mouth of Canal X-X.
- Contractor used 323 excavator to grind rock between stations 0+00 and 0+50.
- Contractor used push boat to position barge as necessary for grinding rock as well as for transporting barge, 323 excavator, and hopper back to Canal CC-CC.
- Contractor used 326 excavator to redistribute removed material at dewatering site.
- Contractor used water tank to clean equipment.



**WEEKLY SUMMARY REPORT – CONTRACT WEEK 38**  
**21-036 EAST NAPLES BAY**  
**DREDGING AND ROCK REMOVAL PROJECT**



- Contractor left hoppers, barge, and 323 excavator in Canal CC-CC between stations 1+00 and 2+00.

***Note: Daily reports with pictures attached for the week.***



**DAILY REPORT OF CONSTRUCTION**  
 21-036 EAST NAPLES BAY  
 DREDGING AND ROCK REMOVAL PROJECT



Date: <b>07/05/2022</b>			
Inspectors: <b>SB</b>	Stantec PIN: <b>2028113191</b>	Accidents <input type="checkbox"/> Yes <input checked="" type="checkbox"/> No	
Day of Week: <b>Tuesday</b>	Contract Day: <b>261/365</b>	Week: <b>38</b>	Accident Report #: <b>N/A</b>
High Temp (°F): <b>91°F</b>	AM Conditions: <b>Sunny</b>	PM Conditions: <b>Cloudy</b>	High Tide: <b>6:43 PM +2.4'</b>
Low Temp (°F): <b>76°F</b>	Wind: <b>6 mph</b>	Wind: <b>10 mph</b>	Low Tide: <b>12:24 AM +1.2'</b>
Canal Worked In: <b>X-X</b>	Stations Worked Between:	<b>2+50 to 3+25</b>	

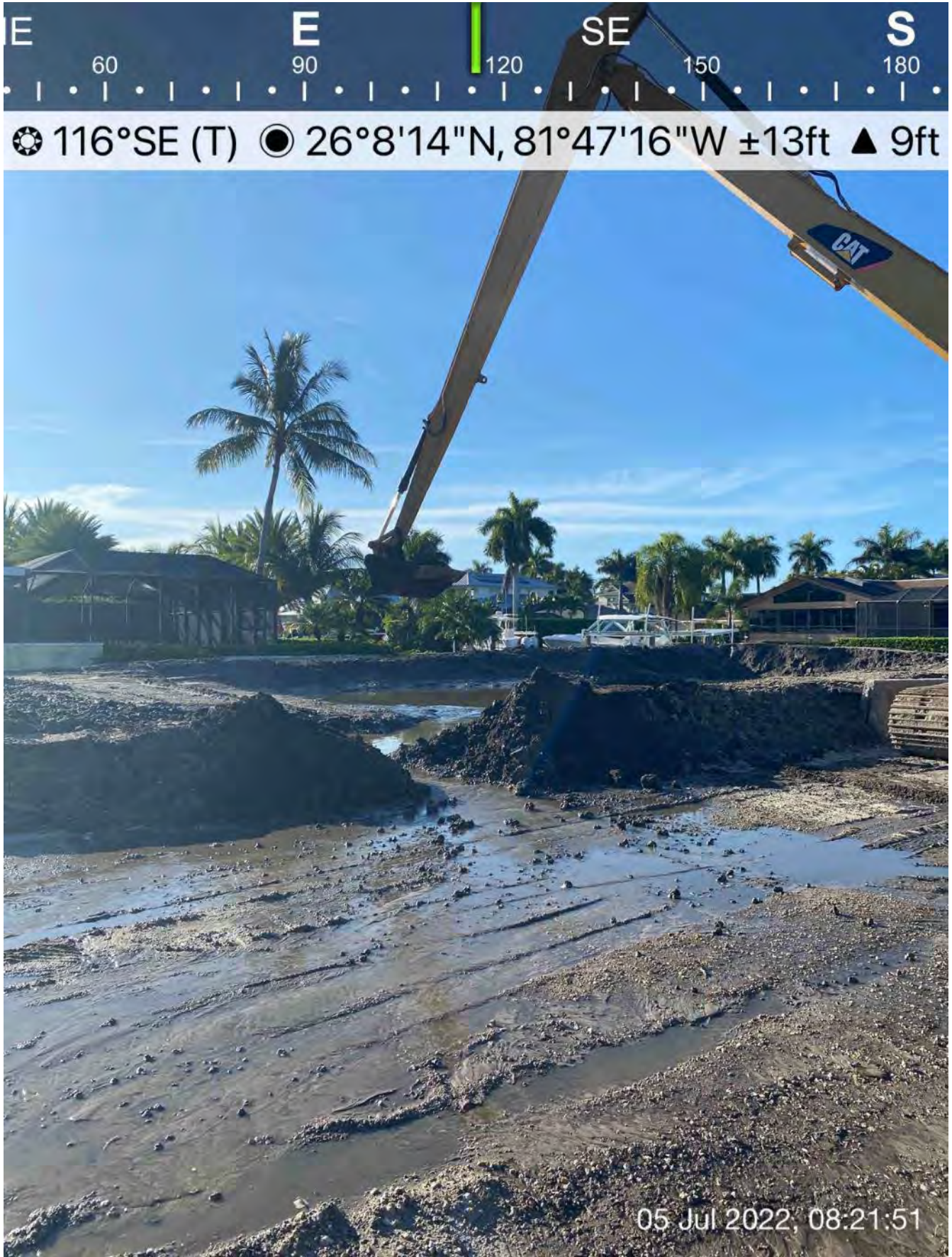
<b>General</b>
<p><b>#1 – Prime Contractor – Quality Enterprises:</b></p> <ul style="list-style-type: none"> <li>• Contractor has a barge, an excavator, 2 hoppers, a push boat, and a support boat staged in Canal CC-CC between stations 1+00 and 2+00. In addition, Contractor has a long-reach excavator, a water tank, and two fuel cubes staged on the property located at 1300 Curlew Avenue, Naples, FL, 34102.</li> <li>• Contractor used 326 excavator to redistribute removed material at dewatering site at 1300 Curlew Avenue.</li> <li>• Contractor used 323 excavator to lift back end of push boat out of water in order to change the oil on the lower part of each motor.</li> <li>• Contractor used small fuel cube to refuel 326 excavator.</li> <li>• Contractor used push boat to transport barge, 323 excavator, and hopper from Canal CC-CC to Canal X-X.</li> <li>• Contractor used support boat to install turbidity curtain across the mouth of Canal X-X and to remove it as necessary for push boat to enter and exit canal with hoppers.</li> <li>• Contractor used 323 excavator to remove 3 hoppers of material between stations 2+50 and 3+25.</li> <li>• Contractor used push boat to position barge as necessary for removing material as well as to transport full hoppers from Canal X-X to Canal CC-CC and empty hoppers from Canal CC-CC to Canal X-X.</li> <li>• Contractor used 326 excavator to transfer removed material from hopper to dewatering site at 1300 Curlew Avenue as well as to redistribute removed material at dewatering site.</li> </ul>

Contractor(s) and Personnel										
#	Name	Type	#	Hrs.	Type	#	Hrs.	Type	#	Hrs.
1	Prime: <b>Quality Enterprises</b>	PM	0	0	Boat Captain	1	9	Mechanic	0	0
		Excavator Operator	2	9	Truck Driver	0	0	Assistant	1	9
		Technician	0	0	Superintendent	0	0	VP	0	0

Equipment					
Cont/ Sub #	Equipment ID	Description	# Pieces	# Used	Total Hours Used
1	N/A	Barge	1	1	7
1	CAT 323	Excavator	1	1	8
1	CAT 326	Excavator	1	1	5
1	02016	Front End Loader	0	0	0
1	FL6223TB	Push Boat	1	1	7
1	FL2474PP	Support Boat	1	1	4
1	N3758Z	Fuel Truck	0	0	0
1	P9457E	Water Truck	0	0	0
1	725RZM	Water Tank	1	0	0
1	Z68EAZ	Small Dump truck	0	0	0
1	PB727E	Small Dump truck	0	0	0
1	MB27DQ	Dump truck	0	0	0
1	MB8DQ	Dump truck	0	0	0
1	MB30DQ	Utility Truck	0	0	0
1	DRHS18	Utility Truck	0	0	0
1	N9524Z	Transport Truck	0	0	0
1	044RTN	Welding Truck	0	0	0

Visitors			
Name	Company	Hours at Job Site	
		From:	To:

Inspector Name and Position	Hours at Job Site/Office		Total Hours
Sam Boyd, EIT	From: 8:15 AM	To: 4:15 PM	8.0



326 excavator redistributing removed material at dewatering site to allow water to drain out



☀ 3°N (T) ☉ 26°8'13"N, 81°47'16"W ±16ft ▲ 8ft

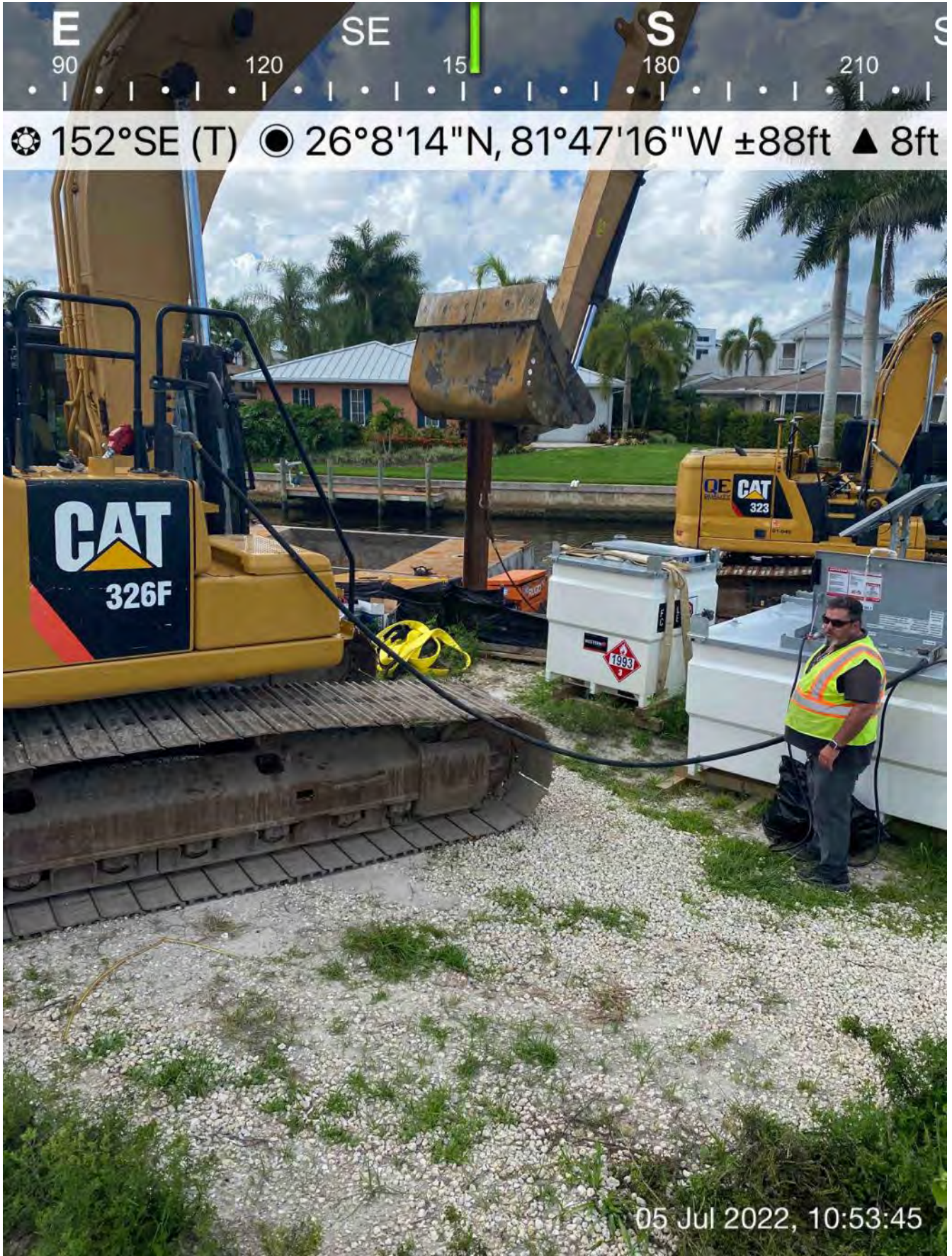


326 excavator redistributing removed material at dewatering site at 1300 Curlew Avenue



323 excavator lifting push boat to allow contractor to change oil on the lower section of the boat motors





Contractor using fuel cube to refuel 326 excavator



☉ 236°SW (T) ☉ 26°8'13"N, 81°47'16"W ±26ft ▲ 9ft



05 Jul 2022, 11:04:16

Contractor using push boat to transport barge and 323 excavator from Canal CC-CC to Canal X-X



☉ 327°NW (T) ☉ 26°8'4"N, 81°47'13"W ±13ft ▲ 8ft



323 excavator removing material and transferring it to hopper at station 3+00

W NW N  
40 270 300 330 0

☉ 311°NW (T) ☉ 26°8'4"N, 81°47'12"W ±13ft ▲ 9ft



05 Jul 2022, 11:38:20

323 excavator removing material from station 3+00

W NW N  
240 270 300 330 0  
☀ 303°NW (T) ☉ 26°8'4"N, 81°47'14"W ±16ft ▲ 8ft



**Turbidity curtain installed across the mouth of Canal X-X**



☉ 174°S (T) ☉ 26°8'14"N, 81°47'15"W ±13ft ▲ 9ft



326 excavator transferring removed material from dewatering site to dump truck bed at 1300 Curlew Avenue



Push boat transporting full hopper of material from Canal X-X to Canal CC-CC



**DAILY REPORT OF CONSTRUCTION**  
 21-036 EAST NAPLES BAY  
 DREDGING AND ROCK REMOVAL PROJECT



Date: <b>07/06/2022</b>			
Inspectors: <b>SB</b>	Stantec PIN: <b>2028113191</b>	Accidents <input type="checkbox"/> Yes <input checked="" type="checkbox"/> No	
Day of Week: <b>Wednesday</b>	Contract Day: <b>262/365</b>	Week: <b>38</b>	Accident Report #: <b>N/A</b>
High Temp (°F): <b>88°F</b>	AM Conditions: <b>Sunny</b>	PM Conditions: <b>Rainy</b>	High Tide: <b>7:20 AM +2.5'</b>
Low Temp (°F): <b>77°F</b>	Wind: <b>5 mph</b>	Wind: <b>14 mph</b>	Low Tide: <b>1:39 PM +1.0'</b>
Canal Worked In: <b>X-X</b>	Stations Worked Between:	<b>1+50 to 2+50</b>	

**General**

**#1 – Prime Contractor – Quality Enterprises:**

- Contractor has a barge, an excavator and a hopper staged in Canal X-X at station 2+50. Contractor also has a hopper, a push boat, and a support boat staged in Canal CC-CC between stations 1+00 and 2+00. In addition, Contractor has a long-reach excavator, a water tank, and two fuel cubes staged on the property located at 1300 Curlew Avenue, Naples, FL, 34102.
- Dump truck came to site at 1300 Curlew Avenue.
- Contractor used 326 excavator to transport removed material from dewatering site to dump truck bed.
- Dump truck took material off site.
- Contractor used support boat to install turbidity curtain across the mouth of Canal X-X and to remove it as necessary for push boat to enter and exit canal with hoppers.
- Contractor used 323 excavator to remove 5 hoppers of material between stations 1+50 and 2+50.
- Contractor used push boat to position barge as necessary for removing material as well as to transport full hoppers from Canal X-X to Canal CC-CC and empty hoppers from Canal CC-CC to Canal X-X.
- Contractor used 326 excavator to transfer removed material from hopper to dewatering site at 1300 Curlew Avenue as well as to redistribute removed material at dewatering site.



Contractor(s) and Personnel										
#	Name	Type	#	Hrs.	Type	#	Hrs.	Type	#	Hrs.
1	Prime: <b>Quality Enterprises</b>	PM	0	0	Boat Captain	1	9	Mechanic	0	0
		Excavator Operator	2	9	Truck Driver	1	7	Assistant	1	9
		Technician	0	0	Superintendent	0	0	VP	0	0

Equipment					
Cont/ Sub #	Equipment ID	Description	# Pieces	# Used	Total Hours Used
1	N/A	Barge	1	1	7
1	CAT 323	Excavator	1	1	7
1	CAT 326	Excavator	1	1	4
1	02016	Front End Loader	0	0	0
1	FL6223TB	Push Boat	1	1	7
1	FL2474PP	Support Boat	1	1	3
1	N3758Z	Fuel Truck	0	0	0
1	P9457E	Water Truck	0	0	0
1	725RZM	Water Tank	1	0	0
1	Z68EAZ	Small Dump truck	1	1	7
1	PB727E	Small Dump truck	0	0	0
1	MB27DQ	Dump truck	0	0	0
1	MB8DQ	Dump truck	0	0	0
1	MB30DQ	Utility Truck	0	0	0
1	DRHS18	Utility Truck	0	0	0
1	N9524Z	Transport Truck	0	0	0
1	044RTN	Welding Truck	0	0	0

Visitors			
Name	Company	Hours at Job Site	
		From:	To:

Inspector Name and Position	Hours at Job Site/Office		Total Hours
Sam Boyd, EIT	From: 9:00 AM	To: 5:00 PM	8.0

SW W NW  
210 240 270 300 330

☉ 279°W (T) ☉ 26°8'4"N, 81°47'14"W ±16ft ▲ 8ft



Support boat holding open turbidity curtain to allow push boat to transport full hopper of material to Canal CC-CC

S 150 180 210 SW 240 W 270

☉ 215°SW (T) ☉ 26°8'13"N, 81°47'15"W ±62ft ▲ 9ft



Push boat dropping off full hopper of material in Canal CC-CC

SE S SW  
120 150 180 210 240

☉ 175°S (T) ☉ 26°8'14"N, 81°47'15"W ±13ft ▲ 10ft



326 excavator transferring removed material from hopper to dewatering site at 1300 Curlew Avenue

W

270

NW

300

30

N

0

30

☀ 328°NW (T) ● 26°8'4"N, 81°47'14"W ±19ft ▲ 8ft



06 Jul 2022, 10:06:28

323 excavator removing material from station 2+00



326 excavator transferring removed material from hopper to dewatering site at 1300 Curlew Avenue

W 270      NW 300      N 0      NE 30

☉ 338°N (T)    ☉ 26°8'4"N, 81°47'14"W ±16ft    ▲ 9ft



06 Jul 2022, 13:23:17

323 excavator removing material and transferring it to hopper at station 1+50

N 0 30 60 90 NE E  
330 0 30 60 90  
☀ 36°NE (T) ☉ 26°8'14"N, 81°47'16"W ±22ft ▲ 8ft



326 excavator transferring removed material from dewatering site to dump truck bed at 1300 Curlew Avenue



SW

240

W

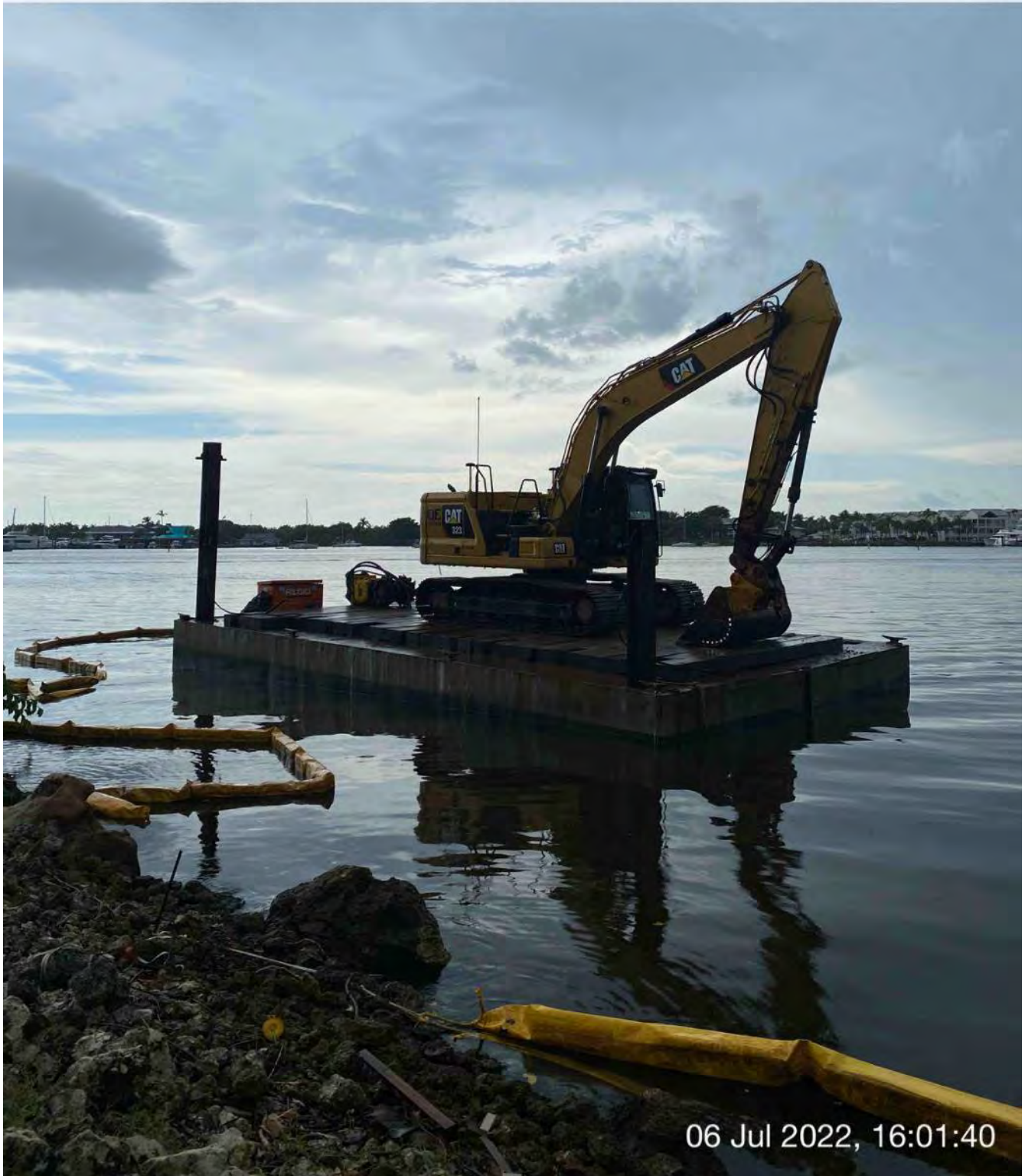
270

NW

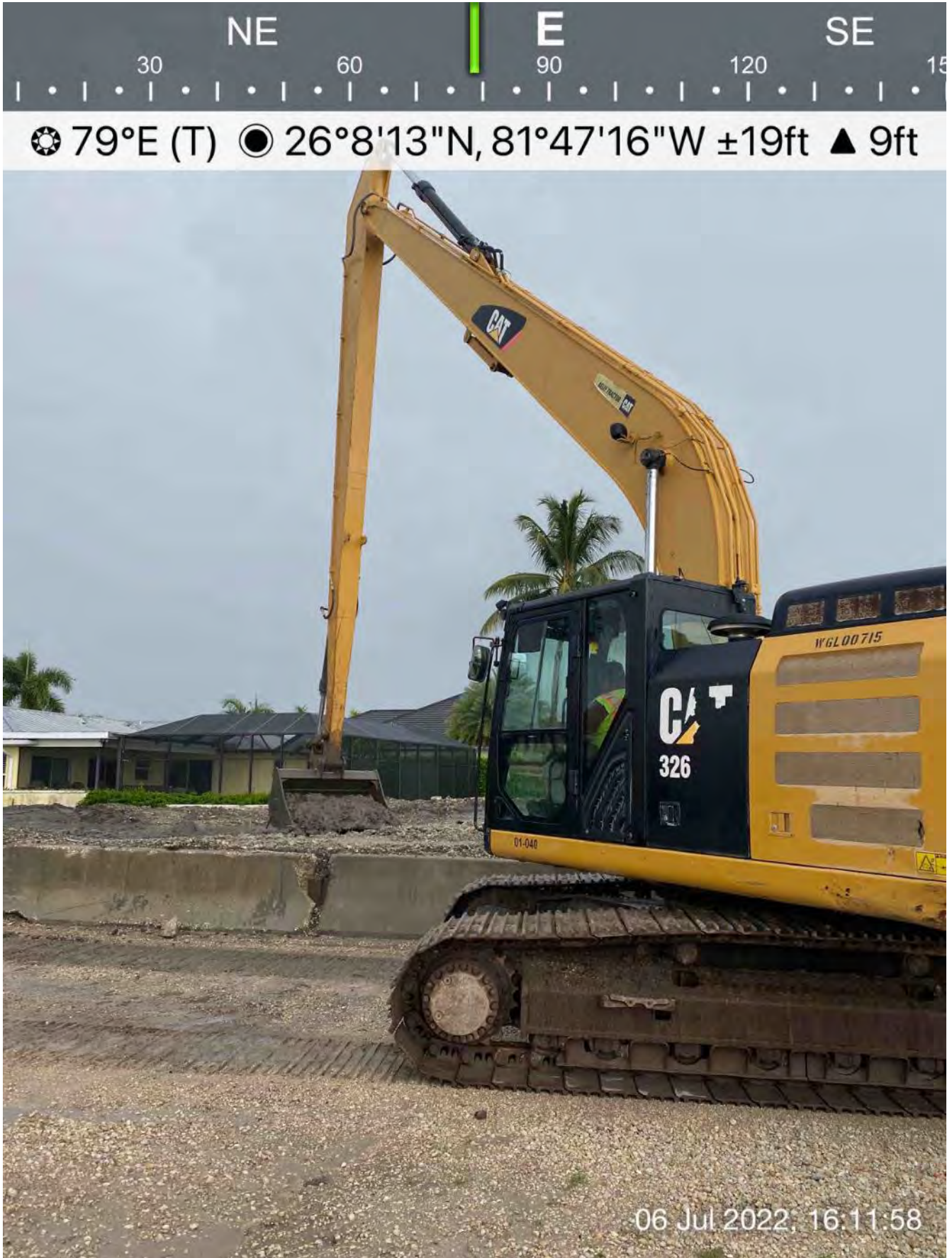
300

330

☀ 285°W (T) ☉ 26°8'4"N, 81°47'14"W ±26ft ▲ 9ft



323 excavator and barge staged outside of Canal X-X



326 excavator transferring removed material from hopper to dewatering site at 1300 Curlew Avenue



**DAILY REPORT OF CONSTRUCTION**  
 21-036 EAST NAPLES BAY  
 DREDGING AND ROCK REMOVAL PROJECT



Date: <b>07/07/2022</b>			
Inspectors: <b>SB</b>	Stantec PIN: <b>2028113191</b>	Accidents <input type="checkbox"/> Yes <input checked="" type="checkbox"/> No	
Day of Week: <b>Thursday</b>	Contract Day: <b>263/365</b>	Week: <b>38</b>	Accident Report #: <b>N/A</b>
High Temp (°F): <b>89°F</b>	AM Conditions: <b>Sunny</b>	PM Conditions: <b>Cloudy</b>	High Tide: <b>7:56 AM +2.5'</b>
Low Temp (°F): <b>76°F</b>	Wind: <b>5 mph</b>	Wind: <b>13 mph</b>	Low Tide: <b>2:46 PM +0.8'</b>
Canal Worked In: <b>X-X</b>	Stations Worked Between:	<b>0+50 to 1+50</b>	

<b>General</b>
<p><b>#1 – Prime Contractor – Quality Enterprises:</b></p> <ul style="list-style-type: none"> <li>• Contractor has a barge, an excavator and a hopper staged in Canal X-X at station 1+50. Contractor also has a hopper, a push boat, and a support boat staged in Canal CC-CC between stations 1+00 and 2+00. In addition, Contractor has a long-reach excavator, a water tank, and two fuel cubes staged on the property located at 1300 Curlew Avenue, Naples, FL, 34102.</li> <li>• Dump truck came to site at 1300 Curlew Avenue.</li> <li>• Contractor used 326 excavator to transport removed material from dewatering site to dump truck bed.</li> <li>• Dump truck took material off site.</li> <li>• Dump truck brought stones to site and used 326 excavator to distribute them on site at 1300 Curlew Avenue.</li> <li>• Contractor used support boat to install turbidity curtain across the mouth of Canal X-X and to remove it as necessary for push boat to enter and exit canal with hoppers.</li> <li>• Contractor used 323 excavator to remove 5 hoppers of material between stations 0+50 and 1+50.</li> <li>• Contractor used push boat to position barge as necessary for removing material as well as to transport full hoppers from Canal X-X to Canal CC-CC and empty hoppers from Canal CC-CC to Canal X-X.</li> <li>• Contractor used 326 excavator to transfer removed material from hopper to dewatering site at 1300 Curlew Avenue as well as to redistribute removed material at dewatering site.</li> <li>• Contractor moved barge, 323 excavator, turbidity curtain, and hopper outside the mouth of Canal X-X.</li> </ul>

Contractor(s) and Personnel										
#	Name	Type	#	Hrs.	Type	#	Hrs.	Type	#	Hrs.
1	Prime: <b>Quality Enterprises</b>	PM	0	0	Boat Captain	1	9	Mechanic	0	0
		Excavator Operator	2	9	Truck Driver	1	8	Assistant	1	9
		Technician	0	0	Superintendent	0	0	VP	0	0

Equipment					
Cont/ Sub #	Equipment ID	Description	# Pieces	# Used	Total Hours Used
1	N/A	Barge	1	1	8
1	CAT 323	Excavator	1	1	8
1	CAT 326	Excavator	1	1	5
1	02016	Front End Loader	0	0	0
1	FL6223TB	Push Boat	1	1	8
1	FL2474PP	Support Boat	1	1	3
1	N3758Z	Fuel Truck	0	0	0
1	P9457E	Water Truck	0	0	0
1	725RZM	Water Tank	1	0	0
1	Z68EAZ	Small Dump truck	1	1	8
1	PB727E	Small Dump truck	0	0	0
1	MB27DQ	Dump truck	0	0	0
1	MB8DQ	Dump truck	0	0	0
1	MB30DQ	Utility Truck	0	0	0
1	DRHS18	Utility Truck	0	0	0
1	N9524Z	Transport Truck	0	0	0
1	044RTN	Welding Truck	0	0	0

Visitors			
Name	Company	Hours at Job Site	
		From:	To:

Inspector Name and Position	Hours at Job Site/Office		Total Hours
Sam Boyd, EIT	From: 8:30 AM	To: 4:30 PM	8.0

W NW N  
40 270 300 330 0  
☉ 311°NW (T) ☉ 26°8'5"N, 81°47'14"W ±114ft ▲ 10ft



323 excavator removing material from station 1+50

W 270 300 NW 330 N 0  
☀ 312°NW (T) ☉ 26°8'4"N, 81°47'15"W ±19ft ▲ 8ft



07 Jul 2022, 09:15:45

323 excavator transferring removed material to hopper at station 1+00

E S SW W  
150 180 10 240 270

☉ 208°SW (T) ☉ 26°8'13"N, 81°47'16"W ±13ft ▲ 11ft



326 excavator transferring removed material from hopper to dewatering site at 1300 Curlew Avenue

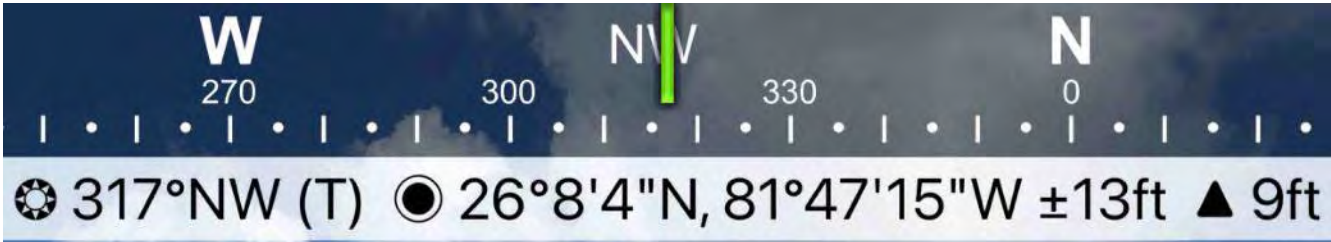
SE S SW  
120 150 180 210 240

☀ 169°S (T) ☉ 26°8'14"N, 81°47'16"W ±13ft ▲ 11ft



326 excavator transferring removed material from hopper to dewatering site at 1300 Curlew Avenue





323 excavator removing material from station 1+00

S 180 SW 210 240 W 270 300  
☀ 234°SW (T) ● 26°8'13"N, 81°47'15"W ±13ft ▲ 10ft



07 Jul 2022, 11:17:40

Push boat dropping off full hopper of removed material in Canal CC-CC



☀ 167°S (T) ☉ 26°8'14"N, 81°47'16"W ±49ft ▲ 9ft



07 Jul 2022, 11:52:39

Dump truck dropping off stones on site at 1300 Curlew Avenue

E | S | SW | W  
150 | 180 | 210 | 240 | 270  
☉ 209°SW (T) ☉ 26°8'15"N, 81°47'15"W ±36ft ▲ 8ft

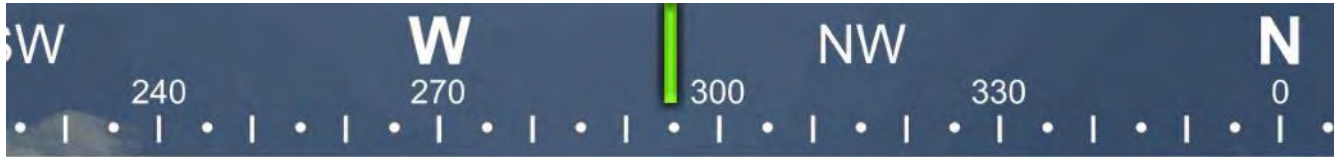


326 excavator transferring removed material from dewatering site to dump truck bed at 1300 Curlew Avenue

W NW N  
240 270 300 330 0  
301°NW (T) 26°8'4"N, 81°47'15"W ±13ft ▲ 11ft



323 excavator removing material and transferring it to hopper at station 0+50



☉ 295°NW (T) ● 26°8'4"N, 81°47'15"W ±91ft ▲ 8ft



323 excavator lifting spud to allow push boat to mobilize barge outside of Canal X-X



Dump truck on site at 1300 Curlew Avenue



**DAILY REPORT OF CONSTRUCTION**  
 21-036 EAST NAPLES BAY  
 DREDGING AND ROCK REMOVAL PROJECT



Date: <b>07/08/2022</b>			
Inspectors: <b>SB</b>	Stantec PIN: <b>2028113191</b>		Accidents <input type="checkbox"/> Yes <input checked="" type="checkbox"/> No
Day of Week: <b>Friday</b>	Contract Day: <b>264/365</b>	Week: <b>38</b>	Accident Report #: <b>N/A</b>
High Temp (°F): <b>90°F</b>	AM Conditions: <b>Sunny</b>	PM Conditions: <b>Cloudy</b>	High Tide: <b>8:32 AM +2.6'</b>
Low Temp (°F): <b>73°F</b>	Wind: <b>6 mph</b>	Wind: <b>6 mph</b>	Low Tide: <b>3:47 PM +0.4'</b>
Canal Worked In: <b>X-X</b>	Stations Worked Between:	<b>0+00 to 0+50</b>	

**General**

**#1 – Prime Contractor – Quality Enterprises:**

- Contractor has a barge, an excavator and a hopper staged outside the mouth of Canal X-X. Contractor also has a hopper, a push boat, and a support boat staged in Canal CC-CC between stations 1+00 and 2+00. In addition, Contractor has a long-reach excavator, a water tank, and two fuel cubes staged on the property located at 1300 Curlew Avenue, Naples, FL, 34102.
- Contractor used support boat to install turbidity curtain across the mouth of Canal X-X.
- Contractor used 323 excavator to grind rock between stations 0+00 and 0+50.
- Contractor used push boat to position barge as necessary for grinding rock as well as for transporting barge, 323 excavator, and hopper back to Canal CC-CC.
- Contractor used 326 excavator to redistribute removed material at dewatering site.
- Contractor used water tank to clean equipment.
- Contractor left hoppers, barge, and 323 excavator in Canal CC-CC between stations 1+00 and 2+00 for the weekend.



Contractor(s) and Personnel										
#	Name	Type	#	Hrs.	Type	#	Hrs.	Type	#	Hrs.
1	Prime: <b>Quality Enterprises</b>	PM	0	0	Boat Captain	1	9	Mechanic	0	0
		Excavator Operator	2	9	Truck Driver	0	0	Assistant	1	9
		Technician	0	0	Superintendent	0	0	VP	0	0

Equipment					
Cont/ Sub #	Equipment ID	Description	# Pieces	# Used	Total Hours Used
1	N/A	Barge	1	1	7
1	CAT 323	Excavator	1	1	6
1	CAT 326	Excavator	1	1	2
1	02016	Front End Loader	0	0	0
1	FL6223TB	Push Boat	1	1	7
1	FL2474PP	Support Boat	1	1	2
1	N3758Z	Fuel Truck	0	0	0
1	P9457E	Water Truck	0	0	0
1	725RZM	Water Tank	1	0	0
1	Z68EAZ	Small Dump truck	0	0	0
1	PB727E	Small Dump truck	0	0	0
1	MB27DQ	Dump truck	0	0	0
1	MB8DQ	Dump truck	0	0	0
1	MB30DQ	Utility Truck	0	0	0
1	DRHS18	Utility Truck	0	0	0
1	N9524Z	Transport Truck	0	0	0
1	044RTN	Welding Truck	0	0	0

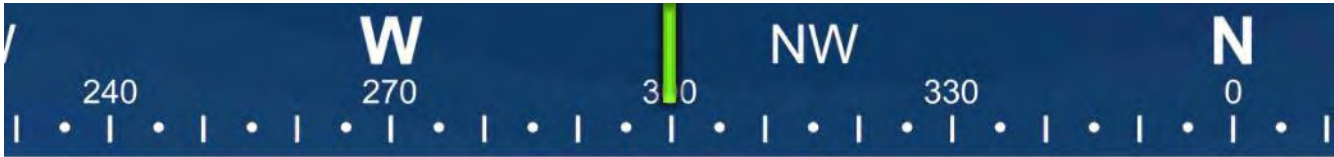
Visitors			
Name	Company	Hours at Job Site	
		From:	To:

Inspector Name and Position	Hours at Job Site/Office		Total Hours
Sam Boyd, EIT	From: 8:00 AM	To: 4:00 PM	8.0



08 Jul 2022, 09:31:48

323 excavator on barge at station 0+50



☉ 300°NW (T) ● 26°8'4"N, 81°47'15"W ±13ft ▲ 10ft



323 excavator grinding rock at station 0+00

SW

W

NW

240

270

300

330

☉ 284°W (T) ☉ 26°8'4"N, 81°47'14"W ±13ft ▲ 9ft



323 excavator grinding rock at station 0+25



☀ 174°S (T) ● 26°8'14"N, 81°47'16"W ±19ft ▲ 9ft



326 excavator redistributing removed material at dewatering site at 1300 Curlew Avenue



☀ 285°W (T) ● 26°8'4"N, 81°47'15"W ±29ft ▲ 8ft



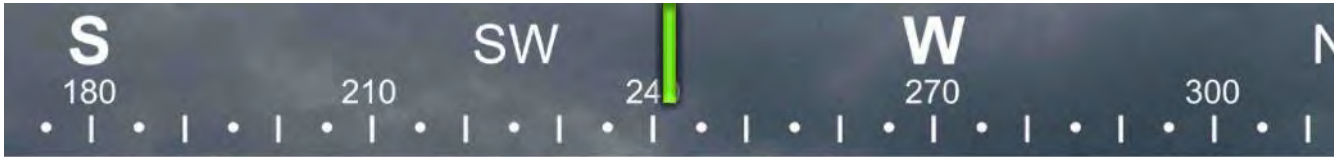
08 Jul 2022, 11:34:26

323 excavator grinding rock at station 0+25

S 180 SW 210 240 W 270 300  
☀ 237°SW (T) ● 26°8'13"N, 81°47'16"W ±45ft ▲ 8ft



323 excavator lifting spud to allow push boat to transport barge from Canal X-X to Canal CC-CC



☉ 241°SW (T) ☉ 26°8'13"N, 81°47'16"W ±32ft ▲ 9ft



Hoppers, barge, and 323 excavator staged in Canal CC-CC between stations 1+00 and 2+00 for the weekend