



WEEKLY SUMMARY REPORT – CONTRACT WEEK 34

21-036 EAST NAPLES BAY

DREDGING AND ROCK REMOVAL PROJECT



Date: 6/6/2022 to 6/10/2022			
Inspectors: Sam Boyd	Stantec PIN: 2028113191		Accidents <input type="checkbox"/> Yes <input checked="" type="checkbox"/> No
Days of Week: Monday to Friday	Contract Days: 232 to 236	Total Days: 365	Accident Report #: N/A
Canal(s) Worked In: X-X	Stations Worked Between: 13+75 to 16+00		

General

Remarks

#1 – Prime Contractor – Quality Enterprises:

Monday 06-06-2022:

- Contractor has a barge, an excavator, a turbidity curtain, a push boat, a support boat, and 2 hoppers stationed in Canal CC-CC between stations 1+00 and 1+50. In addition, Contractor has a long-reach excavator, a water tank, and two fuel cubes staged on the property located at 1300 Curlew Avenue, Naples, FL, 34102.
- Contractor switched from Epiroc grinder to bucket attachment on 323 excavator.
- Contractor used push boat to transport barge, support boat, and 323 excavator from Canal CC-CC to Canal X-X.
- Contractor used support boat to install turbidity curtain across Canal X-X at station 10+75 as well as to remove and reattach curtain as necessary for push boat to transport hoppers to and from canal X-X.
- Contractor used 323 excavator to remove 5 hoppers of material between stations 15+00 and 16+00.
- Contractor used push boat to position barge as necessary for removing material as well as for transporting full hoppers back to Canal CC-CC and empty hoppers back to Canal X-X.
- Contractor used 326 excavator to transfer removed material from hopper to dewatering site at 1300 Curlew Avenue.

Tuesday 06-07-2022:

- Contractor has a barge and an excavator located in Canal X-X at station 15+00. Contractor also has a push boat, a support boat, and 2 hoppers stationed in Canal CC-CC between stations 1+00 and 1+50. In addition, Contractor has a long-reach excavator, a water tank, and two fuel cubes staged on the property located at 1300 Curlew Avenue, Naples, FL, 34102.
- Contractor used support boat to install turbidity curtain across Canal X-X at station 10+75 as well as to remove and reattach curtain as necessary for push boat to transport hoppers to and from canal X-X.
- Contractor used 323 excavator to remove 7 hoppers of material between stations 14+50 and 15+00.
- Contractor used push boat to position barge as necessary for removing material as well as for transporting full hoppers back to Canal CC-CC and empty hoppers back to Canal X-X.
- Contractor used 326 excavator to transfer removed material from hoppers to dewatering site at 1300 Curlew Avenue.

Wednesday 06-08-2022:

- Contractor has a barge, an excavator, a support boat, a hopper, and a push boat located in Canal X-X at station 15+00. Contractor also has 1 hopper stationed in Canal CC-CC between stations 1+00 and 1+50. In addition, Contractor has a long-reach excavator, a water tank, and two fuel cubes staged on the property located at 1300



WEEKLY SUMMARY REPORT – CONTRACT WEEK 34

21-036 EAST NAPLES BAY

DREDGING AND ROCK REMOVAL PROJECT



Curlew Avenue, Naples, FL, 34102.

- Battery died on 323 excavator. Contractor had to wait until mechanic came with 24V battery charger.
- Contractor used push boat to transport battery and Mechanic to the barge where they jump started the machine.
- Contractor used support boat to install turbidity curtain across Canal X-X at station 10+75 as well as to remove and reattach curtain as necessary for push boat to transport hoppers to and from canal X-X.
- Contractor used 323 excavator to remove 2 hoppers of material between stations 14+00 and 14+50.
- Contractor used push boat to position barge as necessary for removing material as well as for transporting full hoppers back to Canal CC-CC and empty hoppers back to Canal X-X.
- Contractor used 326 excavator to transfer removed material from hoppers to dewatering site at 1300 Curlew Avenue.

Thursday 06-09-2022:

- Contractor has a barge, an excavator, a support boat, and a push boat located in Canal X-X at station 14+00. Contractor also has 2 hoppers stationed in Canal CC-CC between stations 1+00 and 1+50. In addition, Contractor has a long-reach excavator, a water tank, and two fuel cubes staged on the property located at 1300 Curlew Avenue, Naples, FL, 34102.
- Technician came to site to fix bearing on Epiroc grinder.
- JW Craft truck came to site at 1300 Curlew Avenue to clean bathroom.
- Contractor used support boat to install turbidity curtain across Canal X-X at station 10+75 as well as to remove and reattach curtain as necessary for push boat to transport hoppers to and from canal X-X.
- Contractor used 323 excavator to remove 8 hoppers of material between stations 14+00 and 16+00.
- Contractor used push boat to position barge as necessary for removing material as well as for transporting full hoppers back to Canal CC-CC and empty hoppers back to Canal X-X.
- Contractor used 326 excavator to transfer removed material from hoppers to dewatering site at 1300 Curlew Avenue.

Friday 06-10-2022:

- Contractor has a barge, an excavator, a support boat, a hopper, and a push boat located in Canal X-X at station 14+00. Contractor also has 1 hopper stationed in Canal CC-CC between stations 1+00 and 1+50. In addition, Contractor has a long-reach excavator, a water tank, and two fuel cubes staged on the property located at 1300 Curlew Avenue, Naples, FL, 34102.
- Contractor used support boat to install turbidity curtain across Canal X-X at station 10+75 as well as to remove and reattach curtain as necessary for push boat to transport hoppers to and from canal X-X.
- Contractor used 323 excavator to remove 2 hoppers of material between stations 13+75 and 14+50.
- Contractor used push boat to position barge as necessary for removing material as well as for transporting full hoppers back to Canal CC-CC and empty hoppers back to Canal X-X.
- Contractor used 326 excavator to transfer removed material from hoppers to dewatering site at 1300 Curlew



WEEKLY SUMMARY REPORT – CONTRACT WEEK 34

21-036 EAST NAPLES BAY

DREDGING AND ROCK REMOVAL PROJECT



Avenue.

- Contractor moved push boat, support boat, barge, and 323 excavator back to Canal CC-CC between stations 1+00 and 2+00 and secured equipment for the weekend.
- Contractor refueled 323 excavator with fuel cube.
- Contractor used water tank to clean equipment

Note: Daily reports with pictures attached for the week.



DAILY REPORT OF CONSTRUCTION
 21-036 EAST NAPLES BAY
 DREDGING AND ROCK REMOVAL PROJECT



Date: 06/06/2022			
Inspectors: SB	Stantec PIN: 2028113191	Accidents <input type="checkbox"/> Yes <input checked="" type="checkbox"/> No	
Day of Week: Monday	Contract Day: 232/365	Week: 34	Accident Report #: N/A
High Temp (°F): 88°F	AM Conditions: Sunny	PM Conditions: Sunny	High Tide: 7:43 AM +2.2'
Low Temp (°F): 78°F	Wind: 4 mph	Wind: 13 mph	Low Tide: 1:10 PM +1.5'
Canal Worked In: X-X	Stations Worked Between:	15+00 to 16+00	

General
<p>#1 – Prime Contractor – Quality Enterprises:</p> <ul style="list-style-type: none"> • Contractor has a barge, an excavator, a turbidity curtain, a push boat, a support boat, and 2 hoppers stationed in Canal CC-CC between stations 1+00 and 1+50. In addition, Contractor has a long-reach excavator, a water tank, and two fuel cubes staged on the property located at 1300 Curlew Avenue, Naples, FL, 34102. • Contractor switched from Epiroc grinder to bucket attachment on 323 excavator. • Contractor used push boat to transport barge, support boat, and 323 excavator from Canal CC-CC to Canal X-X. • Contractor used support boat to install turbidity curtain across Canal X-X at station 10+75 as well as to remove and reattach curtain as necessary for push boat to transport hoppers to and from canal X-X. • Contractor used 323 excavator to remove 5 hoppers of material between stations 15+00 and 16+00. • Contractor used push boat to position barge as necessary for removing material as well as for transporting full hoppers back to Canal CC-CC and empty hoppers back to Canal X-X. • Contractor used 326 excavator to transfer removed material from hopper to dewatering site at 1300 Curlew Avenue.

Contractor(s) and Personnel										
#	Name	Type	#	Hrs.	Type	#	Hrs.	Type	#	Hrs.
1	Prime: Quality Enterprises	PM	0	0	Boat Captain	1	9	Mechanic	0	0
		Excavator Operator	2	9	Truck Driver	0	0	Assistant	1	9
		Technician	0	0	Superintendent	1	0.5	VP	0	0

Equipment					
Cont/ Sub #	Equipment ID	Description	# Pieces	# Used	Total Hours Used
1	N/A	Barge	1	1	9
1	CAT 323	Excavator	1	1	9
1	CAT 326	Excavator	1	1	6
1	02016	Front End Loader	0	0	0
1	FL6223TB	Push Boat	1	1	9
1	FL2474PP	Support Boat	1	1	6
1	N3758Z	Fuel Truck	0	0	0
1	P9457E	Water Truck	0	0	0
1	725RZM	Water Tank	1	0	0
1	Z68EAZ	Small Dump truck	0	0	0
1	PB727E	Dump truck	0	0	0
1	MB3DQ	Dump truck	0	0	0
1	MB30DQ	Utility Truck	1	1	1
1	DRHS18	Utility Truck	0	0	0
1	N9524Z	Transport Truck	0	0	0
1	044RTN	Welding Truck	0	0	0

Visitors			
Name	Company	Hours at Job Site	
		From:	To:

Inspector Name and Position	Hours at Job Site/Office		Total Hours
Sam Boyd, EIT	From: 9:00 AM	To: 5:00 PM	8.0

S 180 SW 210 24 W 270 300 N
☉ 242°SW (T) ☉ 26°8'13"N, 81°47'16"W ±36ft ▲ 9ft



Contractor removing Epiroc grinder from 323 excavator



☉ 260°W (T) ● 26°8'13"N, 81°47'16"W ±26ft ▲ 8ft



323 excavator lifting spud to allow push boat to mobilize barge from Canal CC-CC to Canal X-X



☀ 209°SW (T) ● 26°8'8"N, 81°47'1"W ±13ft ▲ 9ft



06 Jun 2022, 11:23:12

323 excavator removing material from station 16+00

S 180 SW 240 W 270

☉ 221°SW (T) ● 26°8'8"N, 81°47'1"W ±13ft ▲ 10ft

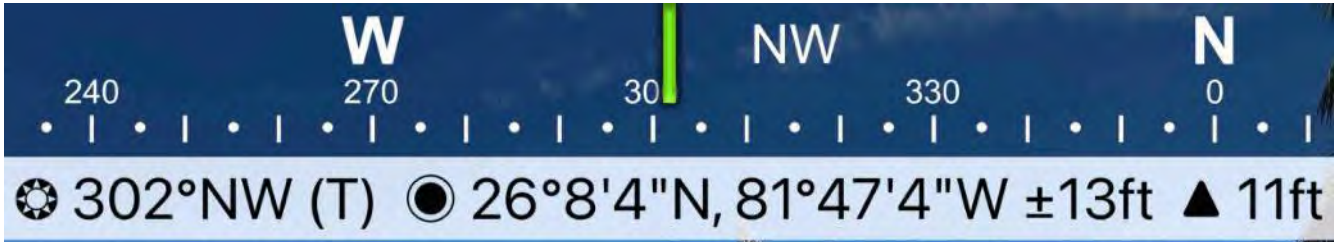


06 Jun 2022, 11:23:55

323 excavator transferring removed material to hopper



Turbidity curtain installed across Canal X-X at station 10+75



Support boat being used to open turbidity curtain to allow push boat to transport full hopper back to Canal CC-CC



Push boat dropping full hopper off in Canal CC-CC at station 1+50

S SW W
150 180 210 240 270
☉ 214°SW (T) ☉ 26°8'14"N, 81°47'15"W ±13ft ▲ 7ft



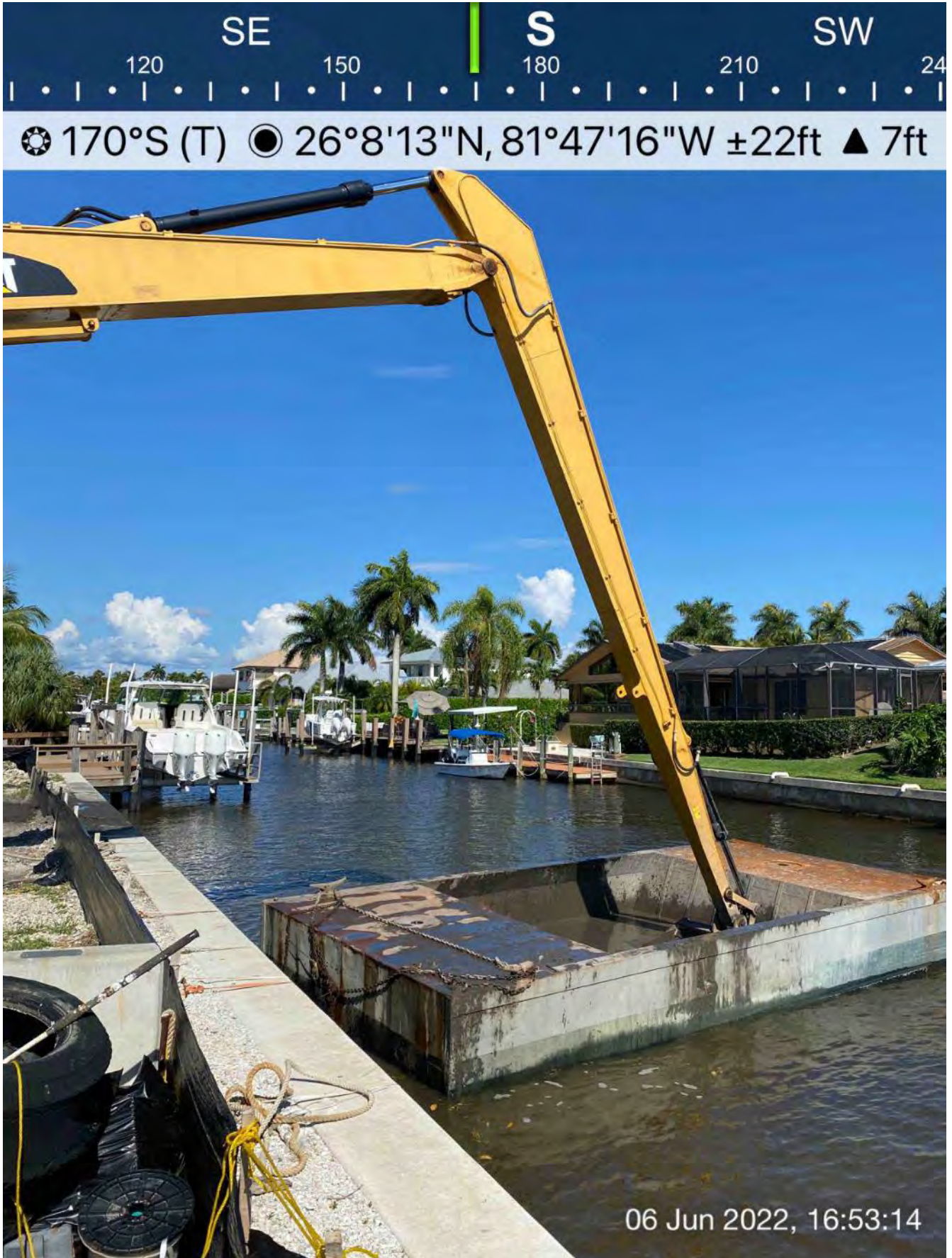
326 excavator transferring removed material from hopper to dewatering site at 1300 Curlew Avenue

SW 240 W 270 NW 330 N 0
☀ 290°W (T) ● 26°8'13"N, 81°47'16"W ±19ft ▲ 8ft



06 Jun 2022, 16:52:56

Push boat transporting empty hopper from Canal CC-CC to barge in Canal X-X



326 excavator transferring removed material from hopper to dewatering site at 1300 Curlew Avenue



DAILY REPORT OF CONSTRUCTION
 21-036 EAST NAPLES BAY
 DREDGING AND ROCK REMOVAL PROJECT



Date: 06/07/2022			
Inspectors: SB	Stantec PIN: 2028113191		Accidents <input type="checkbox"/> Yes <input checked="" type="checkbox"/> No
Day of Week: Tuesday	Contract Day: 233/365	Week: 34	Accident Report #: N/A
High Temp (°F): 88°F	AM Conditions: Sunny	PM Conditions: Cloudy	High Tide: 8:25 AM +2.3'
Low Temp (°F): 76°F	Wind: 6 mph	Wind: 15 mph	Low Tide: 2:29 PM +1.3'
Canal Worked In: X-X	Stations Worked Between:	14+50 to 15+00	

General	
#1 – Prime Contractor – Quality Enterprises:	
<ul style="list-style-type: none"> • Contractor has a barge and an excavator located in Canal X-X at station 15+00. Contractor also has a push boat, a support boat, and 2 hoppers stationed in Canal CC-CC between stations 1+00 and 1+50. In addition, Contractor has a long-reach excavator, a water tank, and two fuel cubes staged on the property located at 1300 Curlew Avenue, Naples, FL, 34102. • Contractor used support boat to install turbidity curtain across Canal X-X at station 10+75 as well as to remove and reattach curtain as necessary for push boat to transport hoppers to and from canal X-X. • Contractor used 323 excavator to remove 7 hoppers of material between stations 14+50 and 15+00. • Contractor used push boat to position barge as necessary for removing material as well as for transporting full hoppers back to Canal CC-CC and empty hoppers back to Canal X-X. • Contractor used 326 excavator to transfer removed material from hoppers to dewatering site at 1300 Curlew Avenue. 	

Contractor(s) and Personnel										
#	Name	Type	#	Hrs.	Type	#	Hrs.	Type	#	Hrs.
1	Prime: Quality Enterprises	PM	0	0	Boat Captain	1	9	Mechanic	0	0
		Excavator Operator	2	9	Truck Driver	0	0	Assistant	1	9
		Technician	0	0	Superintendent	0	0	VP	0	0

Equipment					
Cont/ Sub #	Equipment ID	Description	# Pieces	# Used	Total Hours Used
1	N/A	Barge	1	1	9
1	CAT 323	Excavator	1	1	9
1	CAT 326	Excavator	1	1	6
1	02016	Front End Loader	0	0	0
1	FL6223TB	Push Boat	1	1	9
1	FL2474PP	Support Boat	1	1	6
1	N3758Z	Fuel Truck	0	0	0
1	P9457E	Water Truck	0	0	0
1	725RZM	Water Tank	1	0	0
1	Z68EAZ	Small Dump truck	0	0	0
1	PB727E	Dump truck	0	0	0
1	MB3DQ	Dump truck	0	0	0
1	MB30DQ	Utility Truck	1	1	1
1	DRHS18	Utility Truck	0	0	0
1	N9524Z	Transport Truck	0	0	0
1	044RTN	Welding Truck	0	0	0

Visitors			
Name	Company	Hours at Job Site	
		From:	To:

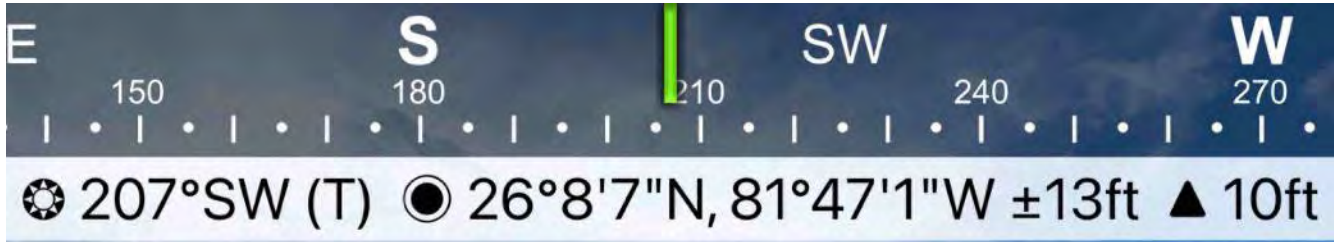
Inspector Name and Position	Hours at Job Site/Office		Total Hours
Sam Boyd, EIT	From: 8:30 AM	To: 4:30 PM	8.0

S 180 SW 210 240 W 270 300

☉ 229°SW (T) ☉ 26°8'13"N, 81°47'15"W ±19ft ▲ 8ft



Push boat dropping off full hopper of material at Canal CC-CC station 1+50



07 Jun 2022, 09:15:32

323 excavator removing material from station 15+00

W 270 NW 330 N 0
☀ 313°NW (T) ☉ 26°8'4"N, 81°47'4"W ±13ft ▲ 10ft



Support boat being used to open turbidity curtain to allow push boat to transport full hopper back to Canal CC-CC

SW 240 W 270 NW 330 N 0
293°NW (T) 26°8'6"N, 81°47'0"W ±13ft ▲ 10ft



07 Jun 2022, 10:16:48

323 excavator transferring removed material to hopper



E 90 SE 120 150 S 180
☀ 132°SE (T) ☉ 26°8'13"N, 81°47'16"W ±13ft ▲ 10ft

07 Jun 2022, 11:06:03

326 excavator transferring removed material from hopper to dewatering site at 1300 Curlew Avenue

S 150 180 210 240 270 W
SW
211°SW (T) 26°8'14"N, 81°47'15"W ±49ft ▲ 9ft



326 excavator transferring removed material from hopper to dewatering site at 1300 Curlew Avenue



☉ 288°W (T) ☉ 26°8'6"N, 81°47'0"W ±13ft ▲ 9ft



07 Jun 2022, 14:54:28

323 excavator removing material from station 14+50



DAILY REPORT OF CONSTRUCTION
21-036 EAST NAPLES BAY
DREDGING AND ROCK REMOVAL PROJECT



Date: 06/08/2022			
Inspectors: SB	Stantec PIN: 2028113191	Accidents <input type="checkbox"/> Yes <input checked="" type="checkbox"/> No	
Day of Week: Wednesday	Contract Day: 234/365	Week: 34	Accident Report #: N/A
High Temp (°F): 87°F	AM Conditions: Sunny	PM Conditions: Sunny	High Tide: 9:03 AM +2.4'
Low Temp (°F): 76°F	Wind: 5 mph	Wind: 10 mph	Low Tide: 3:27 PM +1.0'
Canal Worked In: X-X	Stations Worked Between:	14+00 to 14+50	

General
<p>#1 – Prime Contractor – Quality Enterprises:</p> <ul style="list-style-type: none">• Contractor has a barge, an excavator, a support boat, a hopper, and a push boat located in Canal X-X at station 15+00. Contractor also has 1 hopper stationed in Canal CC-CC between stations 1+00 and 1+50. In addition, Contractor has a long-reach excavator, a water tank, and two fuel cubes staged on the property located at 1300 Curlew Avenue, Naples, FL, 34102.• Battery died on 323 excavator. Contractor had to wait until mechanic came with 24V battery charger.• Contractor used push boat to transport battery and Mechanic to the barge where they jump started the machine.• Contractor used support boat to install turbidity curtain across Canal X-X at station 10+75 as well as to remove and reattach curtain as necessary for push boat to transport hoppers to and from canal X-X.• Contractor used 323 excavator to remove 2 hoppers of material between stations 14+00 and 14+50.• Contractor used push boat to position barge as necessary for removing material as well as for transporting full hoppers back to Canal CC-CC and empty hoppers back to Canal X-X.• Contractor used 326 excavator to transfer removed material from hoppers to dewatering site at 1300 Curlew Avenue.

Contractor(s) and Personnel										
#	Name	Type	#	Hrs.	Type	#	Hrs.	Type	#	Hrs.
1	Prime: Quality Enterprises	PM	0	0	Boat Captain	1	9	Mechanic	1	2
		Excavator Operator	2	9	Truck Driver	0	0	Assistant	1	9
		Technician	0	0	Superintendent	0	0	VP	0	0

Equipment					
Cont/ Sub #	Equipment ID	Description	# Pieces	# Used	Total Hours Used
1	N/A	Barge	1	1	3
1	CAT 323	Excavator	1	1	2
1	CAT 326	Excavator	1	1	2
1	02016	Front End Loader	0	0	0
1	FL6223TB	Push Boat	1	1	3
1	FL2474PP	Support Boat	1	1	3
1	N3758Z	Fuel Truck	0	0	0
1	P9457E	Water Truck	0	0	0
1	725RZM	Water Tank	1	0	0
1	Z68EAZ	Small Dump truck	0	0	0
1	PB727E	Dump truck	0	0	0
1	MB3DQ	Dump truck	0	0	0
1	MB30DQ	Utility Truck	1	1	1
1	DRHS18	Utility Truck	0	0	0
1	N9524Z	Transport Truck	0	0	0
1	044RTN	Welding Truck	0	0	0

Visitors			
Name	Company	Hours at Job Site	
		From:	To:

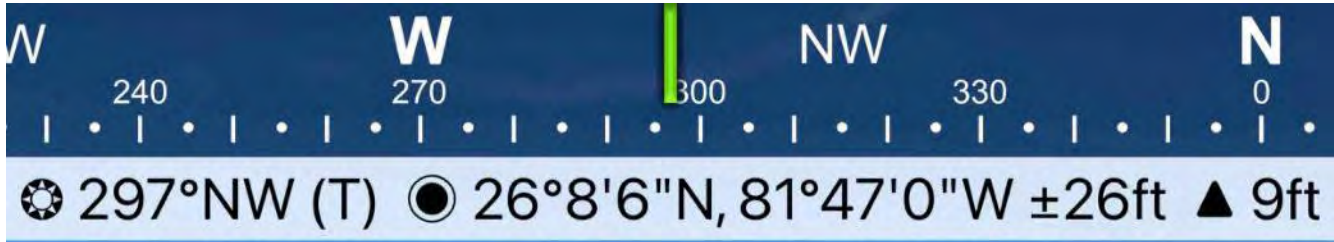
Inspector Name and Position	Hours at Job Site/Office		Total Hours
Sam Boyd, EIT	From: 9:00 AM	To: 5:00 PM	8.0



☀ 300°NW (T) ● 26°8'4"N, 81°47'4"W ±16ft ▲ 9ft



Turbidity curtain installed across Canal X-X at station 10+50



323 excavator, hopper, and push boat stationed in Canal X-X between stations 14+00 and 15+00



☀ 136°SE (T) ● 26°8'14"N, 81°47'16"W ±16ft ▲ 8ft



Utility truck on site at 1300 Curlew Avenue



☉ 261°W (T) ☉ 26°8'6"N, 81°47'0"W ±13ft ▲ 9ft



08 Jun 2022, 15:27:53

Support boat transporting Mechanic and batteries to barge in Canal X-X at station 14+50



☉ 258°W (T) ● 26°8'6"N, 81°47'0"W ±13ft ▲ 11ft



08 Jun 2022, 15:41:14

323 excavator removing material from station 14+25 and transferring to hopper

NE 60 E 90 SE 120 150 S 180
☀ 114°SE (T) ☉ 26°8'13"N, 81°47'16"W ±29ft ▲ 9ft



Push boat dropping off full hopper of material and picking up empty hopper of material in Canal CC-CC

E SE S SW
0 120 150 180 210

☀ 160°S (T) ● 26°8'14"N, 81°47'16"W ±22ft ▲ 8ft



08 Jun 2022, 16:25:28

326 excavator transferring removed material from hopper to dewatering site at 1300 Curlew Avenue

SE 150 S 180 SW 210 240

☉ 193°S (T) ☉ 26°8'7"N, 81°47'1"W ±13ft ▲ 13ft



08 Jun 2022, 16:45:21

323 excavator removing material from station 14+00 and transferring to hopper



☀ 310°NW (T) ● 26°8'4"N, 81°47'4"W ±13ft ▲ 8ft



Support boat being used to open turbidity curtain to allow push boat to transport full hopper back to Canal CC-CC



DAILY REPORT OF CONSTRUCTION
 21-036 EAST NAPLES BAY
 DREDGING AND ROCK REMOVAL PROJECT



Date: 06/09/2022			
Inspectors: SB	Stantec PIN: 2028113191	Accidents <input type="checkbox"/> Yes <input checked="" type="checkbox"/> No	
Day of Week: Thursday	Contract Day: 235/365	Week: 34	Accident Report #: N/A
High Temp (°F): 88°F	AM Conditions: Sunny	PM Conditions: Sunny	High Tide: 9:38 AM +2.5'
Low Temp (°F): 78°F	Wind: 6 mph	Wind: 8 mph	Low Tide: 4:20 PM +0.6'
Canal Worked In: X-X	Stations Worked Between:	14+00 to 16+00	

General
<p>#1 – Prime Contractor – Quality Enterprises:</p> <ul style="list-style-type: none"> • Contractor has a barge, an excavator, a support boat, and a push boat located in Canal X-X at station 14+00. Contractor also has 2 hoppers stationed in Canal CC-CC between stations 1+00 and 1+50. In addition, Contractor has a long-reach excavator, a water tank, and two fuel cubes staged on the property located at 1300 Curlew Avenue, Naples, FL, 34102. • Technician came to site to fix bearing on Epiroc grinder. • JW Craft truck came to site at 1300 Curlew Avenue to clean bathroom. • Contractor used support boat to install turbidity curtain across Canal X-X at station 10+75 as well as to remove and reattach curtain as necessary for push boat to transport hoppers to and from canal X-X. • Contractor used 323 excavator to remove 8 hoppers of material between stations 14+00 and 16+00. • Contractor used push boat to position barge as necessary for removing material as well as for transporting full hoppers back to Canal CC-CC and empty hoppers back to Canal X-X. • Contractor used 326 excavator to transfer removed material from hoppers to dewatering site at 1300 Curlew Avenue.

Contractor(s) and Personnel										
#	Name	Type	#	Hrs.	Type	#	Hrs.	Type	#	Hrs.
1	Prime: Quality Enterprises	PM	0	0	Boat Captain	1	9	Mechanic	1	2
		Excavator Operator	2	9	Truck Driver	0	0	Assistant	1	9
		Technician	0	0	Superintendent	1	0.5	VP	0	0

Equipment					
Cont/ Sub #	Equipment ID	Description	# Pieces	# Used	Total Hours Used
1	N/A	Barge	1	1	9
1	CAT 323	Excavator	1	1	9
1	CAT 326	Excavator	1	1	6
1	02016	Front End Loader	0	0	0
1	FL6223TB	Push Boat	1	1	9
1	FL2474PP	Support Boat	1	1	6
1	N3758Z	Fuel Truck	0	0	0
1	P9457E	Water Truck	0	0	0
1	725RZM	Water Tank	1	0	0
1	Z68EAZ	Small Dump truck	0	0	0
1	PB727E	Dump truck	0	0	0
1	MB3DQ	Dump truck	0	0	0
1	MB30DQ	Utility Truck	1	1	2
1	DRHS18	Utility Truck	0	0	0
1	N9524Z	Transport Truck	0	0	0
1	044RTN	Welding Truck	0	0	0

Visitors			
Name	Company	Hours at Job Site	
		From:	To:

Inspector Name and Position	Hours at Job Site/Office		Total Hours
Sam Boyd, EIT	From: 8:30 AM	To: 4:30 PM	8.0



☉ 267°W (T) ● 26°8'13"N, 81°47'15"W ±13ft ▲ 10ft



09 Jun 2022, 08:41:36

326 excavator transferring removed material from hopper to dewatering site at 1300 Curlew Avenue

E 150 S 180 210 SW 240 W 270
☀ 207°SW (T) ☉ 26°8'14"N, 81°47'16"W ±13ft ▲ 9ft



Contractor using Utility truck to lift Epiroc grinder in order to fix the bearing on one of the teeth

SW W NW
210 240 270 300 330

☉ 272°W (T) ☉ 26°8'5"N, 81°47'0"W ±13ft ▲ 8ft



09 Jun 2022, 09:43:33

323 excavator removing material from station 14+50

W NW N
240 270 300 330 0
304°NW (T) 26°8'4"N, 81°47'4"W ±26ft ▲ 8ft



Support boat being used to open turbidity curtain to allow push boat to transport full hopper back to Canal CC-CC



☉ 101°E (T) ☉ 26°8'14"N, 81°47'16"W ±19ft ▲ 9ft



326 excavator redistributing removed material at dewatering site at 1300 Curlew Avenue

SE 150 S 180 SW 210 240 2

☀ 198°S (T) ☉ 26°8'7"N, 81°47'0"W ±19ft ▲ 8ft



09 Jun 2022, 13:50:31

323 excavator lifting spud to allow push boat to mobilize barge at station 15+50

SE S SW
120 150 180 210 240
189°S (T) 26°8'8"N, 81°47'2"W ±114ft ▲ 11ft



09 Jun 2022, 13:54:12

323 excavator removing material from station 15+50

W 270 NW 300 N 0 30

☀ 321°NW (T) ☉ 26°8'6"N, 81°47'0"W ±13ft ▲ 10ft



09 Jun 2022, 15:27:10

323 excavator removing material from station 15+50 and transferring to hopper



☀ 131°SE (T) ● 26°8'13"N, 81°47'16"W ±13ft ▲ 10ft



09 Jun 2022, 15:57:39

Push boat dropping off full hopper of material and picking up empty hopper of material in Canal CC-CC

SE S SW
120 150 180 210 240

☀ 177°S (T) ☉ 26°8'14"N, 81°47'15"W ±39ft ▲ 9ft



326 excavator transferring removed material from hopper to dewatering site at 1300 Curlew Avenue



DAILY REPORT OF CONSTRUCTION
 21-036 EAST NAPLES BAY
 DREDGING AND ROCK REMOVAL PROJECT



Date: 06/10/2022			
Inspectors: SB	Stantec PIN: 2028113191		Accidents <input type="checkbox"/> Yes <input checked="" type="checkbox"/> No
Day of Week: Friday	Contract Day: 236/365	Week: 34	Accident Report #: N/A
High Temp (°F): 87°F	AM Conditions: Sunny	PM Conditions: Sunny	High Tide: 10:13 AM +2.7'
Low Temp (°F): 79°F	Wind: 0 mph	Wind: 11 mph	Low Tide: 5:11 PM +0.2'
Canal Worked In: X-X	Stations Worked Between:	13+75 to 14+50	

General
<p>#1 – Prime Contractor – Quality Enterprises:</p> <ul style="list-style-type: none"> • Contractor has a barge, an excavator, a support boat, a hopper, and a push boat located in Canal X-X at station 14+00. Contractor also has 1 hopper stationed in Canal CC-CC between stations 1+00 and 1+50. In addition, Contractor has a long-reach excavator, a water tank, and two fuel cubes staged on the property located at 1300 Curlew Avenue, Naples, FL, 34102. • Contractor used support boat to install turbidity curtain across Canal X-X at station 10+75 as well as to remove and reattach curtain as necessary for push boat to transport hoppers to and from canal X-X. • Contractor used 323 excavator to remove 2 hoppers of material between stations 13+75 and 14+50. • Contractor used push boat to position barge as necessary for removing material as well as for transporting full hoppers back to Canal CC-CC and empty hoppers back to Canal X-X. • Contractor used 326 excavator to transfer removed material from hoppers to dewatering site at 1300 Curlew Avenue. • Contractor moved push boat, support boat, barge, and 323 excavator back to Canal CC-CC between stations 1+00 and 2+00 and secured equipment for the weekend. • Contractor refueled 323 excavator with fuel cube. • Contractor used water tank to clean equipment

Contractor(s) and Personnel										
#	Name	Type	#	Hrs.	Type	#	Hrs.	Type	#	Hrs.
1	Prime: Quality Enterprises	PM	0	0	Boat Captain	1	8	Mechanic	0	0
		Excavator Operator	2	8	Truck Driver	0	0	Assistant	1	9
		Technician	0	0	Superintendent	1	0.5	VP	0	0

Equipment					
Cont/ Sub #	Equipment ID	Description	# Pieces	# Used	Total Hours Used
1	N/A	Barge	1	1	7
1	CAT 323	Excavator	1	1	6
1	CAT 326	Excavator	1	1	2
1	02016	Front End Loader	0	0	0
1	FL6223TB	Push Boat	1	1	7
1	FL2474PP	Support Boat	1	1	1
1	N3758Z	Fuel Truck	0	0	0
1	P9457E	Water Truck	0	0	0
1	725RZM	Water Tank	1	1	1
1	Z68EAZ	Small Dump truck	0	0	0
1	PB727E	Dump truck	0	0	0
1	MB3DQ	Dump truck	0	0	0
1	MB30DQ	Utility Truck	0	0	0
1	DRHS18	Utility Truck	0	0	0
1	N9524Z	Transport Truck	0	0	0
1	044RTN	Welding Truck	0	0	0

Visitors			
Name	Company	Hours at Job Site	
		From:	To:

Inspector Name and Position	Hours at Job Site/Office		Total Hours
Sam Boyd, EIT	From: 8:30 AM	To: 4:30 PM	8.0

SW 210 240 W 270 NW 300

☉ 257°W (T) ☉ 26°8'5"N, 81°47'0"W ±19ft ▲ 9ft



10 Jun 2022, 09:19:17

323 excavator lifting spud to allow push boat to mobilize barge at station 14+00



☉ 271°W (T) ☉ 26°8'5"N, 81°47'0"W ±13ft ▲ 10ft



10 Jun 2022, 09:21:54

323 excavator removing material from station 14+50



Support boat being used to open turbidity curtain to allow push boat to transport full hopper back to Canal CC-CC

E 90 SE 120 150 S 180
☀ 133°SE (T) ● 26°8'14"N, 81°47'16"W ±39ft ▲ 9ft



Push boat dropping off full hopper of material and picking up empty hopper of material in Canal CC-CC



326 excavator transferring material rom hopper to dewatering site at 1300 Curlew Avenue



☀ 261°W (T) ● 26°8'5"N, 81°47'0"W ±13ft ▲ 9ft



323 excavator removing material from station 14+00 and transferring to hopper



☉ 172°S (T) ● 26°8'14"N, 81°47'15"W ±19ft ▲ 9ft



326 excavator transferring material from hopper to dewatering site at 1300 Curlew Avenue

W 270 NW 330 N 0
40 270 300 330 0

☀ 310°NW (T) ☉ 26°8'5"N, 81°47'0"W ±13ft ▲ 9ft



10 Jun 2022, 13:21:54

323 excavator lifting spud to allow push boat to mobilize barge at station 14+00

S 180 SW 240 W 270
0 180 210 240 270
☉ 222°SW (T) ☉ 26°8'13"N, 81°47'16"W ±13ft ▲ 9ft



323 excavator transferring small fuel cube from southwest corner of 1300 Curlew Avenue to barge for refueling



☉ 226°SW (T) ☉ 26°8'13"N, 81°47'15"W ±13ft ▲ 10ft



Contractor using water tank and hose to clean equipment