



WEEKLY SUMMARY REPORT – CONTRACT WEEK 27

21-036 EAST NAPLES BAY

DREDGING AND ROCK REMOVAL PROJECT



Date: 4/18/2022 to 4/22/2022			
Inspectors: Sam Boyd	Stantec PIN: 2028113191	Accidents <input type="checkbox"/> Yes <input checked="" type="checkbox"/> No	
Days of Week: Monday to Friday	Contract Days: 183 to 187	Total Days: 365	Accident Report #: N/A
Canal(s) Worked In: AA-AA / Z-Z	Stations Worked Between: 0+50 to 3+00 / 0+50 to 3+75		

General

Remarks

#1 – Prime Contractor – Quality Enterprises:

Monday 04-18-2022:

- Contractor has an excavator mounted on a barge staged in Canal AA-AA at station 1+50. Contractor also has a push boat, a support boat, and two hoppers staged in Canal CC-CC between stations 1+00 and 1+50. In addition, Contractor has a long-reach excavator, a front end loader, a water tank, and two fuel cubes staged on the property located at 1300 Curlew Avenue, Naples, FL, 34102.
- Contractor used 326 excavator to redistribute removed material at the dewatering site at 1300 Curlew Avenue.
- Contractor used 326 excavator to transfer 3 dump trucks of material from dewatering site to truck beds.
- Dump truck took material off site at 1300 Curlew Avenue.
- Contractor used support boat to install turbidity curtain across Canal X-X at station 11+00.
- Contractor was attempting to fix the computer connection on the 323 excavator.

Tuesday 04-19-2022:

- Contractor has an excavator mounted on a barge, a push boat, and a hopper staged in Canal AA-AA at station 1+50. Contractor also has one hopper staged in Canal CC-CC between stations 1+00 and 1+50. In addition, Contractor has a long-reach excavator, a front end loader, a water tank, and two fuel cubes staged on the property located at 1300 Curlew Avenue, Naples, FL, 34102.
- Contractor’s technician came to fix 323 excavator’s GPS connection.
- Contractor used support boat to install turbidity curtain across Canal X-X at station 11+00.
- Contractor used 323 excavator to remove one hopper of material from Canal AA-AA between stations 0+50 and 3+00.
- Contractor used push boat to transport hopper back to Canal CC-CC.
- Contractor used 326 excavator to transfer one hopper of material from hopper to dewatering site at 1300 Curlew Avenue.
- Contractor used push boat to transport hopper, barge, and 323 excavator from Canal AA-AA to Canal Z-Z.
- Contractor used support boat to install turbidity curtain across Canal X-X at station 8+50.
- Contractor used 323 excavator to grind material in Canal Z-Z between stations 3+00 and 3+75.
- Contractor used push boat to position barge as necessary for grinding material.



WEEKLY SUMMARY REPORT – CONTRACT WEEK 27

21-036 EAST NAPLES BAY

DREDGING AND ROCK REMOVAL PROJECT



Wednesday 04-20-2022:

- Contractor has an excavator mounted on a barge, a push boat, and a hopper staged in Canal Z-Z at station 3+50. Contractor also has one hopper staged in Canal CC-CC between stations 1+00 and 1+50. In addition, Contractor has a long-reach excavator, a front end loader, a water tank, and two fuel cubes staged on the property located at 1300 Curlew Avenue, Naples, FL, 34102.
- Contractor used support boat to install and remove turbidity curtain across Canal X-X at station 8+50 as necessary for push boat to enter and exit Canal X-X.
- Contractor used 323 excavator to grind material between stations 2+50 and 3+50.
- Contractor used push boat to position barge as necessary for grinding material.
- Contractor used Trimble RTK GPS system to record locations of the docks in Canals X-X, Y-Y, Z-Z, and AA-AA.
- Kelly Tractor Technician worked on the computer system for an emissions signal in the 323 excavator.
- Contractor used 326 excavator to transport fuel cube from southwest corner of 1300 Curlew Avenue to push boat. Contractor used push boat to transport fuel cube to Canal Z-Z station 3+50.
- Contractor used fuel cube to refuel 323 excavator.
- Contractor used push boat and 326 excavator to transport fuel cube back to the southwest corner of 1300 Curlew Avenue.
- Contractor used front end loader to redistribute removed material at the dewatering site at 1300 Curlew Avenue.
- Contractor used 326 excavator to transport removed material from the dewatering site to dump truck bed at 1300 Curlew Avenue.
- Contractor took 4 dump truck loads of removed material off site from 1300 Curlew Avenue.

Thursday 04-21-2022:

- Contractor has an excavator mounted on a barge, a push boat, and a hopper staged in Canal Z-Z at station 2+50. Contractor also has one hopper staged in Canal CC-CC between stations 1+00 and 1+50. In addition, Contractor has a long-reach excavator, a front end loader, a water tank, and two fuel cubes staged on the property located at 1300 Curlew Avenue, Naples, FL, 34102.
- Contractor pumped water out from the bottom of the barge.
- Contractor used support boat to install and remove turbidity curtain across Canal X-X at station 8+50 as necessary for push boat and residents to enter and exit Canal X-X.
- Contractor used 323 excavator to grind material between stations 0+50 and 2+50.
- Contractor used push boat to position barge as necessary for grinding material.
- Contractor used Trimble RTK GPS system to record locations of the docks in Canals X-X, Y-Y, Z-Z, and AA-AA.
- Contractor switched from Epiroc to bucket attachment on 323 excavator and removed 3 hoppers of material between stations 3+50 and 3+75.
- Contractor used push boat to position barge as necessary for removing material.



WEEKLY SUMMARY REPORT – CONTRACT WEEK 27

21-036 EAST NAPLES BAY

DREDGING AND ROCK REMOVAL PROJECT



- Contractor used push boat to transport full hoppers back to Canal CC-CC and empty hoppers back to Canal X-X.
- Contractor used 326 excavator to transfer 3 hoppers of material from hopper to dewatering site at 1300 Curlew Avenue.
- Contractor used front end loader to redistribute removed material at 1300 Curlew Avenue.
- Contractor used 326 excavator to transport removed material from the dewatering site to dump truck bed at 1300 Curlew Avenue.
- Contractor took 5 dump truck loads of removed material off site from 1300 Curlew Avenue.

Friday 04-22-2022:

- Contractor has an excavator mounted on a barge, a push boat, and a hopper staged in Canal Z-Z at station 3+00. Contractor also has one hopper staged in Canal CC-CC between stations 1+00 and 1+50. In addition, Contractor has a long-reach excavator, a front end loader, a water tank, and two fuel cubes staged on the property located at 1300 Curlew Avenue, Naples, FL, 34102.
- Contractor pumped water out from the bottom of the barge.
- Contractor used support boat to install and remove turbidity curtain across Canal X-X at station 8+50 as necessary for push boat to enter and exit Canal X-X.
- Contractor used 323 excavator to remove material between stations 2+25 and 3+25.
- Contractor used push boat to position barge as necessary for grinding material.
- Contractor used Trimble RTK GPS system to record locations of the docks in Canals X-X, Y-Y, Z-Z, and AA-AA.
- Contractor used 323 excavator to remove 4 hoppers of material between stations 2+25 and 3+25
- Contractor used push boat to position barge as necessary for removing material as well as to transport full hoppers back to Canal CC-CC and empty hoppers back to Canal X-X.
- Contractor used 326 excavator to transfer 4 hoppers of material from hopper to dewatering site at 1300 Curlew Avenue.

Note: Daily reports with pictures attached for the week.



DAILY REPORT OF CONSTRUCTION
21-036 EAST NAPLES BAY
DREDGING AND ROCK REMOVAL PROJECT



Date: 04/18/2022			
Inspectors: SB	Stantec PIN: 2028113191	Accidents <input type="checkbox"/> Yes <input checked="" type="checkbox"/> No	
Day of Week: Monday	Contract Day: 183/365	Week: 27	Accident Report #: N/A
High Temp (°F): 85°F	AM Conditions: Sunny	PM Conditions: Sunny	High Tide: 2:00 PM +3.0'
Low Temp (°F): 73°F	Wind: 9 mph	Wind: 16 mph	Low Tide: 8:55 AM +0.9'
Canal Worked In: AA-AA	Stations Worked Between:	1+50 to 2+00	

General

#1 – Prime Contractor – Quality Enterprises:

- Contractor has an excavator mounted on a barge staged in Canal AA-AA at station 1+50. Contractor also has a push boat, a support boat, and two hoppers staged in Canal CC-CC between stations 1+00 and 1+50. In addition, Contractor has a long-reach excavator, a front end loader, a water tank, and two fuel cubes staged on the property located at 1300 Curlew Avenue, Naples, FL, 34102.
- Contractor used 326 excavator to redistribute removed material at the dewatering site at 1300 Curlew Avenue.
- Contractor used 326 excavator to transfer 3 dump trucks of material from dewatering site to truck beds.
- Dump truck took material off site at 1300 Curlew Avenue.
- Contractor used support boat to install turbidity curtain across Canal X-X at station 11+00.
- Contractor was attempting to fix the computer connection on the 323 excavator.

Contractor(s) and Personnel										
#	Name	Type	#	Hrs.	Type	#	Hrs.	Type	#	Hrs.
1	Prime: Quality Enterprises	PM	0	0	Boat Captain	1	9	Mechanic	0	0
		Excavator Operator	2	9	Truck Driver	1	7	Assistant	1	9
		Technician	0	0	Superintendent	0	0	VP	0	0

Equipment					
Cont/ Sub #	Equipment ID	Description	# Pieces	# Used	Total Hours Used
1	N/A	Barge	1	1	2
1	CAT 323	Excavator	1	1	2
1	CAT 326	Excavator	1	1	4
1	02016	Front End Loader	1	0	0
1	FL6223TB	Push Boat	1	1	1
1	FL2474PP	Support Boat	1	1	2
1	N3758Z	Fuel Truck	0	0	0
1	P9457E	Water Truck	0	0	0
1	725RZM	Water Tank	1	0	0
1	Z68EAZ	Small Dump truck	0	0	0
1	PB727E	Dump truck	0	0	0
1	MB29DQ	Dump truck	1	1	7
1	MB26DQ	Utility Truck	0	0	0
1	DRHS18	Utility Truck	0	0	0
1	N9524Z	Transport Truck	0	0	0

Visitors			
Name	Company	Hours at Job Site	
		From:	To:
Andy Holland	City of Naples	3:00 pm	3:05 pm

Inspector Name and Position	Hours at Job Site/Office		Total Hours
Sam Boyd, EIT	From: 8:30 AM	To: 4:30 PM	8.0



☉ 181°S (T) ☉ 26°8'15"N, 81°47'15"W ±29ft ▲ 9ft



326 excavator redistributing removed material at dewatering site at 1300 Curlew Avenue



☀ 312°NW (T) ☉ 26°8'4"N, 81°47'4"W ±42ft ▲ 8ft



18 Apr 2022, 09:56:19

Turbidity curtain installed in Canal X-X at station 11+00



☉ 228°SW (T) ● 26°8'3"N, 81°47'1"W ±13ft ▲ 9ft



323 excavator on barge at station 1+75

S 180 SW 210 240 W 270 300
☉ 229°SW (T) ☉ 26°8'15"N, 81°47'15"W ±19ft ▲ 9ft



326 excavator transferring removed material from dewatering site to dump truck at 1300 Curlew Avenue



☀ 60°NE (T) ● 26°8'14"N, 81°47'16"W ±13ft ▲ 11ft



326 excavator transferring removed material from dewatering site to dump truck at 1300 Curlew Avenue



☀ 41°NE (T) ● 26°8'3"N, 81°47'2"W ±13ft ▲ 10ft



18 Apr 2022, 16:00:55

323 excavator, barge, hopper, and push boat between stations 1+50 and 2+00



DAILY REPORT OF CONSTRUCTION
 21-036 EAST NAPLES BAY
 DREDGING AND ROCK REMOVAL PROJECT



Date: 04/19/2022			
Inspectors: SB	Stantec PIN: 2028113191		Accidents <input type="checkbox"/> Yes <input checked="" type="checkbox"/> No
Day of Week: Tuesday	Contract Day: 184/365	Week: 27	Accident Report #: N/A
High Temp (°F): 90°F	AM Conditions: Sunny	PM Conditions: Sunny	High Tide: 2:31 PM +3.0'
Low Temp (°F): 69°F	Wind: 9 mph	Wind: 13 mph	Low Tide: 9:30 AM +1.1'
Canal Worked In: AA-AA / Z-Z	Stations Worked Between:	0+50 to 3+00 / 3+00 to 3+75	

General
<p>#1 – Prime Contractor – Quality Enterprises:</p> <ul style="list-style-type: none"> • Contractor has an excavator mounted on a barge, a push boat, and a hopper staged in Canal AA-AA at station 1+50. Contractor also has one hopper staged in Canal CC-CC between stations 1+00 and 1+50. In addition, Contractor has a long-reach excavator, a front end loader, a water tank, and two fuel cubes staged on the property located at 1300 Curlew Avenue, Naples, FL, 34102. • Contractor’s technician came to fix 323 excavator’s GPS connection. • Contractor used support boat to install turbidity curtain across Canal X-X at station 11+00. • Contractor used 323 excavator to remove one hopper of material from Canal AA-AA between stations 0+50 and 3+00. • Contractor used push boat to transport hopper back to Canal CC-CC. • Contractor used 326 excavator to transfer one hopper of material from hopper to dewatering site at 1300 Curlew Avenue. • Contractor used push boat to transport hopper, barge, and 323 excavator from Canal AA-AA to Canal Z-Z. • Contractor used support boat to install turbidity curtain across Canal X-X at station 8+50. • Contractor used 323 excavator to grind material in Canal Z-Z between stations 3+00 and 3+75. • Contractor used push boat to position barge as necessary for grinding material.

Contractor(s) and Personnel										
#	Name	Type	#	Hrs.	Type	#	Hrs.	Type	#	Hrs.
1	Prime: Quality Enterprises	PM	0	0	Boat Captain	1	9	Mechanic	0	0
		Excavator Operator	1	9	Truck Driver	0	0	Assistant	1	9
		Technician	1	2	Superintendent	1	0.5	VP	0	0

Equipment					
Cont/ Sub #	Equipment ID	Description	# Pieces	# Used	Total Hours Used
1	N/A	Barge	1	1	9
1	CAT 323	Excavator	1	1	7
1	CAT 326	Excavator	1	1	1
1	02016	Front End Loader	1	0	0
1	FL6223TB	Push Boat	1	1	5
1	FL2474PP	Support Boat	1	1	2
1	N3758Z	Fuel Truck	0	0	0
1	P9457E	Water Truck	0	0	0
1	725RZM	Water Tank	1	0	0
1	Z68EAZ	Small Dump truck	0	0	0
1	PB727E	Dump truck	0	0	0
1	MB29DQ	Dump truck	1	0	0
1	MB26DQ	Utility Truck	0	0	0
1	DRHS18	Utility Truck	0	0	0
1	N9524Z	Transport Truck	0	0	0

Visitors			
Name	Company	Hours at Job Site	
		From:	To:

Inspector Name and Position	Hours at Job Site/Office		Total Hours
Sam Boyd, EIT	From: 8:00 AM	To: 4:00 PM	8.0

W 270 NW N 0
240 300 330
☀ 308°NW (T) ☉ 26°8'3"N, 81°47'1"W ±16ft ▲ 8ft



323 excavator removing material from Canal AA-AA at station 2+00

W 240 W 270 00 NW 330 N 0
☀ 298°NW (T) ☉ 26°8'4"N, 81°47'4"W ±19ft ▲ 8ft



19 Apr 2022, 09:24:25

Turbidity curtain installed in Canal X-X at station 11+00



☀ 155°SE (T) ● 26°8'4"N, 81°47'2"W ±13ft ▲ 7ft



323 excavator lifting spud to allow push boat to mobilize barge in Canal AA-AA at station 1+50

E
90

SE

S
180

120

150

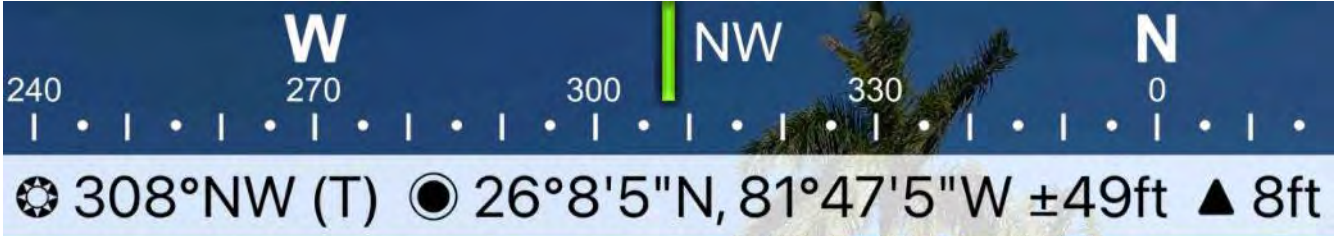
210

☉ 146°SE (T) ☉ 26°8'3"N, 81°47'2"W ±62ft ▲ 8ft



19 Apr 2022, 09:30:53

323 excavator removing material and transferring it to hopper in Canal AA-AA at station 3+00



Support boat opening turbidity curtain to allow push boat to transport hopper to Canal CC-CC



☉ 140°SE (T) ● 26°8'13"N, 81°47'16"W ±22ft ▲ 2ft



19 Apr 2022 16:42:00

326 excavator transferring removed material from hopper to dewatering site at 1300 Curlew Avenue

E 90 SE 120 150 S 180 210
☀ 144°SE (T) ● 26°8'13"N, 81°47'16"W ±26ft ▲ 8ft



326 excavator transferring removed material from hopper to dewatering site at 1300 Curlew Avenue



☉ 130°SE (T) ☉ 26°8'2"N, 81°47'6"W ±29ft ▲ 9ft



19 Apr 2022, 13:33:06

323 excavator grinding rock in Canal Z-Z at station 3+75

W 270 NW 300 N 0 N 30
☀ 334°NW (T) ☉ 26°8'4"N, 81°47'6"W ±22ft ▲ 8ft



Turbidity curtain installed in Canal X-X at station 8+50



☀ 107°E (T) ☉ 26°8'2"N, 81°47'6"W ±36ft ▲ 9ft



323 excavator lifting spud to allow push boat to mobilize barge in Canal Z-Z at station 3+50



DAILY REPORT OF CONSTRUCTION
 21-036 EAST NAPLES BAY
 DREDGING AND ROCK REMOVAL PROJECT



Date: 04/20/2022			
Inspectors: SB	Stantec PIN: 2028113191	Accidents <input type="checkbox"/> Yes <input checked="" type="checkbox"/> No	
Day of Week: Wednesday	Contract Day: 185/365	Week: 27	Accident Report #: N/A
High Temp (°F): 89°F	AM Conditions: Sunny	PM Conditions: Sunny	High Tide: 3:11 PM +2.9'
Low Temp (°F): 63°F	Wind: 11 mph	Wind: 12 mph	Low Tide: 10:07 AM +1.3'
Canal Worked In: Z-Z	Stations Worked Between:	2+50 to 3+50	

General
<p>#1 – Prime Contractor – Quality Enterprises:</p> <ul style="list-style-type: none"> • Contractor has an excavator mounted on a barge, a push boat, and a hopper staged in Canal Z-Z at station 3+50. Contractor also has one hopper staged in Canal CC-CC between stations 1+00 and 1+50. In addition, Contractor has a long-reach excavator, a front end loader, a water tank, and two fuel cubes staged on the property located at 1300 Curlew Avenue, Naples, FL, 34102. • Contractor used support boat to install and remove turbidity curtain across Canal X-X at station 8+50 as necessary for push boat to enter and exit Canal X-X. • Contractor used 323 excavator to grind material between stations 2+50 and 3+50. • Contractor used push boat to position barge as necessary for grinding material. • Contractor used Trimble RTK GPS system to record locations of the docks in Canals X-X, Y-Y, Z-Z, and AA-AA. • Kelly Tractor Technician worked on the computer system for an emissions signal in the 323 excavator. • Contractor used 326 excavator to transport fuel cube from southwest corner of 1300 Curlew Avenue to push boat. Contractor used push boat to transport fuel cube to Canal Z-Z station 3+50. • Contractor used fuel cube to refuel 323 excavator. • Contractor used push boat and 326 excavator to transport fuel cube back to the southwest corner of 1300 Curlew Avenue. • Contractor used front end loader to redistribute removed material at the dewatering site at 1300 Curlew Avenue. • Contractor used 326 excavator to transport removed material from the dewatering site to dump truck bed at 1300 Curlew Avenue. • Contractor took 4 dump truck loads of removed material off site from 1300 Curlew Avenue.

Contractor(s) and Personnel										
#	Name	Type	#	Hrs.	Type	#	Hrs.	Type	#	Hrs.
1	Prime: Quality Enterprises	PM	0	0	Boat Captain	1	9	Mechanic	0	0
		Excavator Operator	2	9	Truck Driver	1	7	Assistant	1	9
		Technician	1	5	Superintendent	1	2	VP	0	0

Equipment					
Cont/ Sub #	Equipment ID	Description	# Pieces	# Used	Total Hours Used
1	N/A	Barge	1	1	9
1	CAT 323	Excavator	1	1	7
1	CAT 326	Excavator	1	1	5
1	02016	Front End Loader	1	1	2
1	FL6223TB	Push Boat	1	1	5
1	FL2474PP	Support Boat	1	1	2
1	N3758Z	Fuel Truck	0	0	0
1	P9457E	Water Truck	0	0	0
1	725RZM	Water Tank	1	0	0
1	Z68EAZ	Small Dump truck	1	1	7
1	PB727E	Dump truck	0	0	0
1	MB29DQ	Dump truck	0	0	0
1	MB26DQ	Utility Truck	0	0	0
1	DRHS18	Utility Truck	0	0	0
1	N9524Z	Transport Truck	0	0	0

Visitors			
Name	Company	Hours at Job Site	
		From:	To:

Inspector Name and Position	Hours at Job Site/Office		Total Hours
Sam Boyd, EIT	From: 9:15 AM	To: 5:15 PM	8.0

S 180 SW 210 240 W 270 N 300
☉ 244°SW (T) ☉ 26°8'15"N, 81°47'15"W ±19ft ▲ 9ft



326 excavator removing material from dewatering site at 1300 Curlew Avenue

SW W NW
10 240 270 300 330
☀ 280°W (T) ☉ 26°8'15"N, 81°47'15"W ±13ft ▲ 9ft



326 excavator transferring removed material to dump truck bed at 1300 Curlew Avenue



☀ 329°NW (T) ● 26°8'4"N, 81°47'7"W ±19ft ▲ 8ft



20 Apr 2022, 09:30:28

Turbidity curtain installed across Canal X-X at station 8+50



☀ 179°S (T) ● 26°8'14"N, 81°47'16"W ±29ft ▲ 8ft



Front end loader redistributing removed material at 1300 Curlew Avenue



☀ 325°NW (T) ● 26°8'1"N, 81°47'6"W ±32ft ▲ 8ft



323 excavator grinding rock at station 3+50



☀ 113°SE (T) ● 26°8'2"N, 81°47'6"W ±36ft ▲ 8ft



20 Apr 2022, 11:31:46

Contractor using Trimble RTK to survey dock locations in Canal Z-Z



Kelly Tractor technician checking the exhaust signal on 323 excavator's computer at station 3+00



☀ 102°E (T) ☉ 26°8'2"N, 81°47'6"W ±59ft ▲ 9ft



Contractor using fuel cube to refuel 323 excavator at station 3+00



☀ 293°W (T) ● 26°8'4"N, 81°47'6"W ±13ft ▲ 9ft



20 Apr 2022, 14:28:30

Turbidity curtain installed in Canal X-X at station 8+50

E 90 SE 120 150 S 180
☀ 128°SE (T) ☉ 26°8'2"N, 81°47'6"W ±36ft ▲ 9ft



20 Apr 2022, 14:31:08

323 excavator grinding material at station 3+00

NE 60 E 90 SE 120 150

☀ 102°E (T) ● 26°8'1"N, 81°47'5"W ±91ft ▲ 8ft



20 Apr 2022, 14:58:29

323 excavator lifting spud to allow push boat to mobilize barge at station 3+00

SW W NW
210 240 270 300 330
☉ 277°W (T) ☉ 26°8'4"N, 81°47'14"W ±19ft ▲ 8ft



Contractor using support boat to take turbidity measurements at the mouth of Canal X-X



☀ 49°NE (T) ☉ 26°8'2"N, 81°47'5"W ±114ft ▲ 28ft



20 Apr 2022, 16:43:01

323 excavator grinding material at station 2+50



DAILY REPORT OF CONSTRUCTION
 21-036 EAST NAPLES BAY
 DREDGING AND ROCK REMOVAL PROJECT



Date: 04/21/2022			
Inspectors: SB	Stantec PIN: 2028113191	Accidents <input type="checkbox"/> Yes <input checked="" type="checkbox"/> No	
Day of Week: Thursday	Contract Day: 186/365	Week: 27	Accident Report #: N/A
High Temp (°F): 89°F	AM Conditions: Sunny	PM Conditions: Sunny	High Tide: 4:01 PM +2.8'
Low Temp (°F): 65°F	Wind: 10 mph	Wind: 12 mph	Low Tide: 10:46 AM +1.5'
Canal Worked In: Z-Z	Stations Worked Between:	0+50 to 3+75	

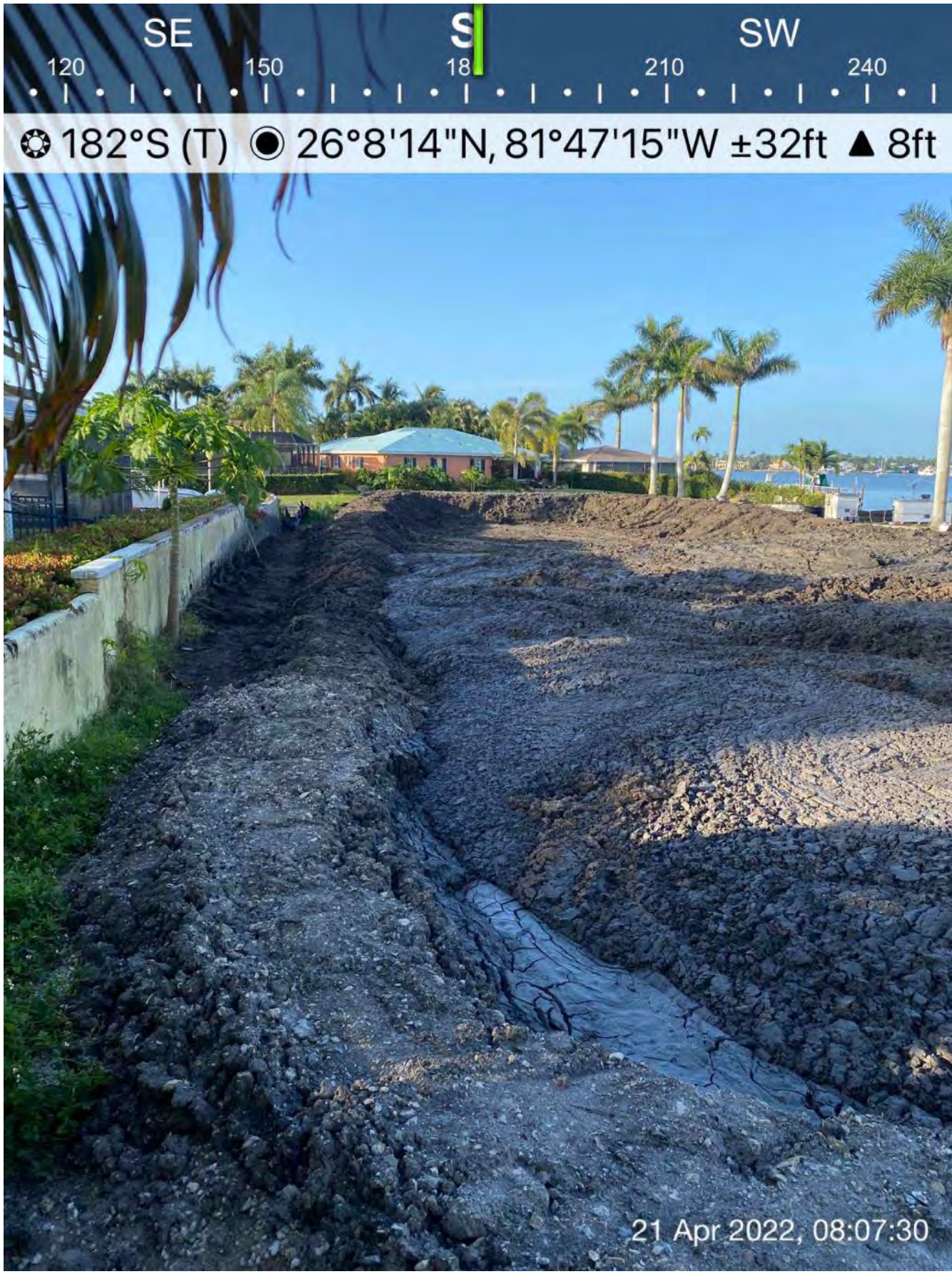
General
<p>#1 – Prime Contractor – Quality Enterprises:</p> <ul style="list-style-type: none"> • Contractor has an excavator mounted on a barge, a push boat, and a hopper staged in Canal Z-Z at station 2+50. Contractor also has one hopper staged in Canal CC-CC between stations 1+00 and 1+50. In addition, Contractor has a long-reach excavator, a front end loader, a water tank, and two fuel cubes staged on the property located at 1300 Curlew Avenue, Naples, FL, 34102. • Contractor pumped water out from the bottom of the barge. • Contractor used support boat to install and remove turbidity curtain across Canal X-X at station 8+50 as necessary for push boat and residents to enter and exit Canal X-X. • Contractor used 323 excavator to grind material between stations 0+50 and 2+50. • Contractor used push boat to position barge as necessary for grinding material. • Contractor used Trimble RTK GPS system to record locations of the docks in Canals X-X, Y-Y, Z-Z, and AA-AA. • Contractor switched from Epiroc to bucket attachment on 323 excavator and removed 3 hoppers of material between stations 3+50 and 3+75. • Contractor used push boat to position barge as necessary for removing material. • Contractor used push boat to transport full hoppers back to Canal CC-CC and empty hoppers back to Canal X-X. • Contractor used 326 excavator to transfer 3 hoppers of material from hopper to dewatering site at 1300 Curlew Avenue. • Contractor used front end loader to redistribute removed material at 1300 Curlew Avenue. • Contractor used 326 excavator to transport removed material from the dewatering site to dump truck bed at 1300 Curlew Avenue. • Contractor took 5 dump truck loads of removed material off site from 1300 Curlew Avenue.

Contractor(s) and Personnel										
#	Name	Type	#	Hrs.	Type	#	Hrs.	Type	#	Hrs.
1	Prime: Quality Enterprises	PM	0	0	Boat Captain	1	9	Mechanic	0	0
		Excavator Operator	2	9	Truck Driver	1	8	Assistant	1	9
		Technician	1	5	Superintendent	0	0	VP	0	0

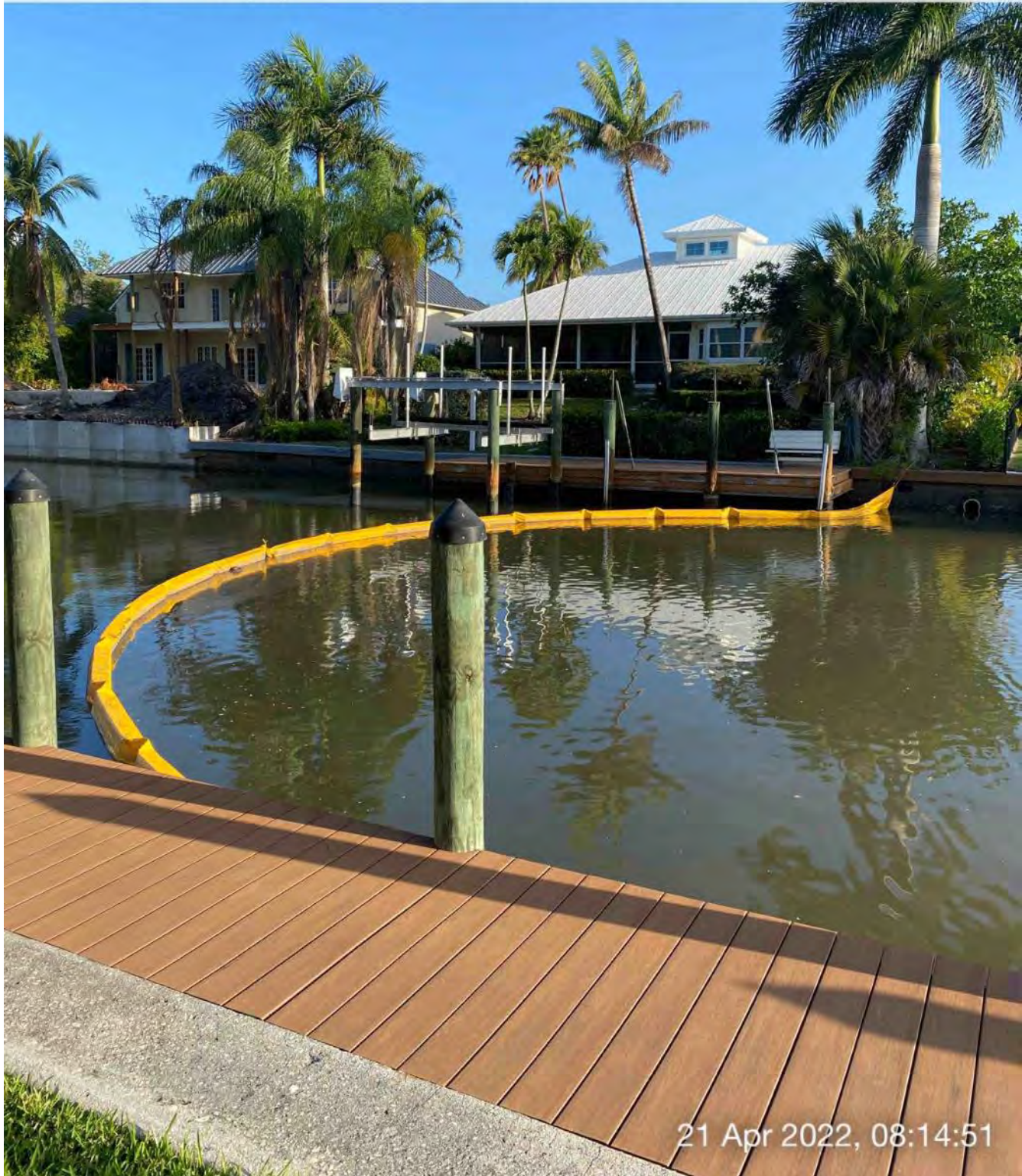
Equipment					
Cont/ Sub #	Equipment ID	Description	# Pieces	# Used	Total Hours Used
1	N/A	Barge	1	1	9
1	CAT 323	Excavator	1	1	8
1	CAT 326	Excavator	1	1	6
1	02016	Front End Loader	1	1	2
1	FL6223TB	Push Boat	1	1	6
1	FL2474PP	Support Boat	1	1	4
1	N3758Z	Fuel Truck	0	0	0
1	P9457E	Water Truck	0	0	0
1	725RZM	Water Tank	1	0	0
1	Z68EAZ	Small Dump truck	0	0	0
1	PB727E	Dump truck	0	0	0
1	MB35DQ	Dump truck	1	1	8
1	MB26DQ	Utility Truck	0	0	0
1	DRHS18	Utility Truck	0	0	0
1	N9524Z	Transport Truck	0	0	0

Visitors			
Name	Company	Hours at Job Site	
		From:	To:

Inspector Name and Position	Hours at Job Site/Office		Total Hours
Sam Boyd, EIT	From: 8:00 AM	To: 4:00 PM	8.0



Removed material at dewatering site at 1300 Curlew Avenue



Turbidity curtain installed across Canal X-X at station 8+50



21 Apr 2022, 08:58:24

323 excavator grinding material at station 2+00

S 180 SW 240 W 270

☀ 222°SW (T) ☉ 26°8'1"N, 81°47'5"W ±26ft ▲ 8ft



323 excavator removing material from station 3+50 and transferring it to hopper



326 excavator transferring removed material from hopper to dewatering site at 1300 Curlew Avenue



☀ 176°S (T) ☉ 26°8'14"N, 81°47'15"W ±13ft ▲ 9ft



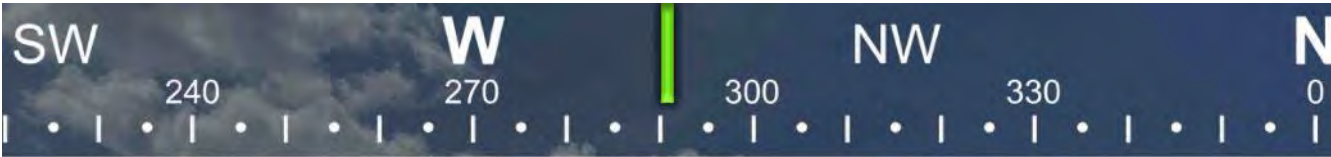
21 Apr 2022 15:02:02

326 excavator transferring removed material from hopper to dewatering site at 1300 Curlew Avenue

E 90 SE 120 150 180 S 210 SW
☉ 156°SE (T) ☉ 26°8'15"N, 81°47'16"W ±78ft ▲ 8ft



326 excavator transferring removed material from dewatering site to dump truck bed at 1300 Curlew Avenue



☉ 291°W (T) ☉ 26°8'4"N, 81°47'6"W ±13ft ▲ 8ft



21 Apr 2022, 15:52:21

Contractor using support boat to open turbidity curtain to allow resident to exit Canal X-X

S SW W
150 180 210 240 270
216°SW (T) 26°8'2"N, 81°47'5"W ±13ft ▲ 10ft



21 Apr 2022, 15:43:52

323 excavator removing material from station 3+50 and transferring it to hopper

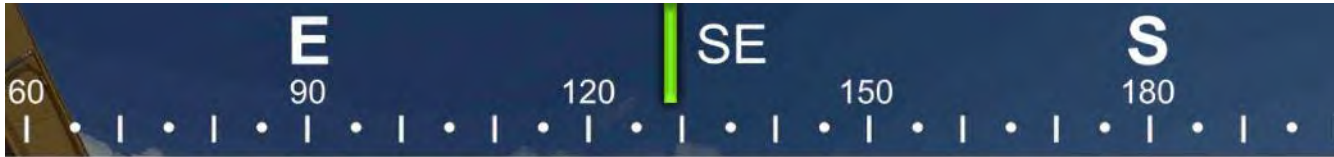


☀ 337°NW (T) ● 26°8'4"N, 81°47'6"W ±13ft ▲ 9ft



21 Apr 2022, 16:00:00

Support boat opening turbidity curtain to allow push boat to transport full hopper to Canal CC-CC



☀ 129°SE (T) ● 26°8'13"N, 81°47'16"W ±16ft ▲ 8ft



Push boat dropping off a full hopper of material in Canal CC-CC at station 1+50



DAILY REPORT OF CONSTRUCTION
 21-036 EAST NAPLES BAY
 DREDGING AND ROCK REMOVAL PROJECT



Date: 04/22/2022			
Inspectors: SB	Stantec PIN: 2028113191	Accidents <input type="checkbox"/> Yes <input checked="" type="checkbox"/> No	
Day of Week: Friday	Contract Day: 187/365	Week: 27	Accident Report #: N/A
High Temp (°F): 90°F	AM Conditions: Cloudy	PM Conditions: Sunny	High Tide: 5:11 PM +2.6'
Low Temp (°F): 66°F	Wind: 9 mph	Wind: 16 mph	Low Tide: 11:56 AM +1.6'
Canal Worked In: Z-Z	Stations Worked Between:	2+25 to 3+25	

General
<p>#1 – Prime Contractor – Quality Enterprises:</p> <ul style="list-style-type: none"> • Contractor has an excavator mounted on a barge, a push boat, and a hopper staged in Canal Z-Z at station 3+00. Contractor also has one hopper staged in Canal CC-CC between stations 1+00 and 1+50. In addition, Contractor has a long-reach excavator, a front end loader, a water tank, and two fuel cubes staged on the property located at 1300 Curlew Avenue, Naples, FL, 34102. • Contractor pumped water out from the bottom of the barge. • Contractor used support boat to install and remove turbidity curtain across Canal X-X at station 8+50 as necessary for push boat to enter and exit Canal X-X. • Contractor used 323 excavator to remove material between stations 2+25 and 3+25. • Contractor used push boat to position barge as necessary for grinding material. • Contractor used Trimble RTK GPS system to record locations of the docks in Canals X-X, Y-Y, Z-Z, and AA-AA. • Contractor used 323 excavator to remove 4 hoppers of material between stations 2+25 and 3+25 • Contractor used push boat to position barge as necessary for removing material as well as to transport full hoppers back to Canal CC-CC and empty hoppers back to Canal X-X. • Contractor used 326 excavator to transfer 4 hoppers of material from hopper to dewatering site at 1300 Curlew Avenue.

Contractor(s) and Personnel										
#	Name	Type	#	Hrs.	Type	#	Hrs.	Type	#	Hrs.
1	Prime: Quality Enterprises	PM	0	0	Boat Captain	1	9	Mechanic	0	0
		Excavator Operator	2	9	Truck Driver	0	0	Assistant	1	9
		Technician	1	5	Superintendent	0	0	VP	0	0

Equipment					
Cont/ Sub #	Equipment ID	Description	# Pieces	# Used	Total Hours Used
1	N/A	Barge	1	1	9
1	CAT 323	Excavator	1	1	7
1	CAT 326	Excavator	1	1	3
1	02016	Front End Loader	1	0	0
1	FL6223TB	Push Boat	1	1	8
1	FL2474PP	Support Boat	1	1	4
1	N3758Z	Fuel Truck	0	0	0
1	P9457E	Water Truck	0	0	0
1	725RZM	Water Tank	1	0	0
1	Z68EAZ	Small Dump truck	0	0	0
1	PB727E	Dump truck	0	0	0
1	MB35DQ	Dump truck	0	0	0
1	MB26DQ	Utility Truck	0	0	0
1	DRHS18	Utility Truck	0	0	0
1	N9524Z	Transport Truck	0	0	0

Visitors			
Name	Company	Hours at Job Site	
		From:	To:

Inspector Name and Position	Hours at Job Site/Office		Total Hours
Sam Boyd, EIT	From: 8:00 AM	To: 5:30 PM	9.5



☀ 226°SW (T) ● 26°8'2"N, 81°47'6"W ±16ft ▲ 9ft



323 excavator removing material from station 3+25 and transferring it to hopper



☉ 229°SW (T) ☉ 26°8'13"N, 81°47'16"W ±22ft ▲ 8ft



Push boat transporting full hopper of material from Canal Z-Z to Canal CC-CC

W

270

NW

300

330

N

0

30

☀ 329°NW (T) ☉ 26°8'1"N, 81°47'6"W ±13ft ▲ 8ft



22 Apr 2022, 09:33:31

323 excavator removing material from station 3+25 and transferring it to hopper

V W NW N
240 270 300 330 0
☀ 299°NW (T) ☉ 26°8'4"N, 81°47'5"W ±13ft ▲ 7ft



Support boat opening turbidity curtain to allow push boat to transport hopper out of Canal X-X

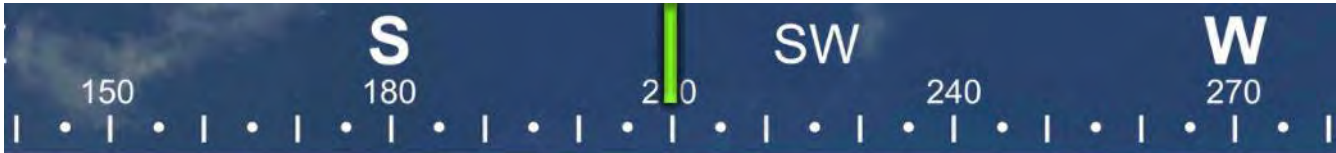
SW W NW
210 240 270 300 330

☀ 276°W (T) ☉ 26°8'2"N, 81°47'6"W ±39ft ▲ 8ft



22 Apr 2022, 10:12:16

323 excavator removing material from station 2+75 and transferring it to hopper



☀ 210°SW (T) ● 26°8'3"N, 81°47'6"W ±68ft ▲ 8ft



22 Apr 2022, 10:57:15

323 excavator lifting spud to allow push boat to mobilize barge at station 2+50