



WEEKLY SUMMARY REPORT – CONTRACT WEEK 24

21-036 EAST NAPLES BAY

DREDGING AND ROCK REMOVAL PROJECT



Date: 3/28/2022 to 4/01/2022			
Inspectors: Sam Boyd	Stantec PIN: 2028113191		Accidents <input type="checkbox"/> Yes <input checked="" type="checkbox"/> No
Days of Week: Monday to Friday	Contract Days: 162 to 166	Total Days: 365	Accident Report #: N/A
Canal(s) Worked In: BB-BB	Stations Worked Between: 0+00 to 11+50		

General

Remarks

#1 – Prime Contractor – Quality Enterprises:

Monday 03-28-2022:

- Contractor has an excavator mounted on a barge staged in Canal CC-CC at station 1+00. Contractor also has a push boat, a support boat, and two hoppers staged in Canal CC-CC at station 1+50. In addition, Contractor has a long-reach excavator, a front end loader, a water tank, and two fuel cubes staged on the property located at 1300 Curlew Avenue, Naples, FL, 34102.
- Contractor used push boat to transport barge, 323 excavator, and hopper from Canal CC-CC to Canal BB-BB.
- Contractor used support boat to install turbidity curtain across the mouth of Canal BB-BB and to remove it as necessary to allow push boat in and out of the canal to transport hopper.
- Contractor used 323 excavator to grind rock between stations 4+00 and 4+50.
- Contractor used 323 excavator to remove 4 hoppers of material between stations 3+50 and 4+50.
- Contractor used push boat to position barge as necessary for grinding and removing material.
- Contractor used push boat to transport hopper from canal BB-BB to Canal CC-CC station 1+50.
- Contractor used 326 excavator to transfer 4 hoppers of material from hopper to dewatering site at 1300 Curlew Avenue and to redistribute the removed material.
- Contractor pumped water out of the bottom of the barge stationed at 3+00

Tuesday 03-29-2022:

- Contractor has an excavator mounted on a barge staged in Canal BB-BB at station 3+00. Contractor also has a push boat, a support boat, and two hoppers staged in Canal CC-CC at station 1+50. In addition, Contractor has a long-reach excavator, a front end loader, a water tank, and two fuel cubes staged on the property located at 1300 Curlew Avenue, Naples, FL, 34102.
- Contractor used support boat to install turbidity curtain across the mouth of Canal BB-BB and to remove it as necessary to allow push boat in and out of the canal to transport hopper.
- Contractor used 323 excavator to remove 8 hoppers of material between stations 2+00 and 3+50.
- Contractor used push boat to position barge as necessary for grinding and removing material.
- Contractor used push boat to transport hopper from canal BB-BB to Canal CC-CC station 1+50.
- Contractor used 326 excavator to transfer 8 hoppers of material from hopper to dewatering site at 1300 Curlew Avenue and to redistribute the removed material.



WEEKLY SUMMARY REPORT – CONTRACT WEEK 24

21-036 EAST NAPLES BAY

DREDGING AND ROCK REMOVAL PROJECT



Wednesday 03-30-2022:

- Contractor has an excavator mounted on a barge staged in Canal BB-BB at station 1+50. Contractor also has a push boat, a support boat, and two hoppers staged in Canal CC-CC at station 1+50. In addition, Contractor has a long-reach excavator, a front end loader, a water tank, and two fuel cubes staged on the property located at 1300 Curlew Avenue, Naples, FL, 34102.
- Contractor used support boat to install turbidity curtain across the mouth of Canal BB-BB.
- Contractor used 323 excavator to remove 7 hoppers of material between stations 0+00 and 1+00.
- Contractor used push boat to position barge as necessary for grinding and removing material.
- Contractor used push boat to transport hopper from canal BB-BB to Canal CC-CC station 1+50.
- Contractor used 326 excavator to transfer 7 hoppers of material from hopper to dewatering site at 1300 Curlew Avenue and to redistribute the removed material.
- Contractor removed turbidity curtain from across the mouth of Canal BB-BB.

Thursday 03-31-2022:

- Contractor has an excavator mounted on a barge staged in Canal BB-BB at station 1+50. Contractor also has a push boat, a support boat, and two hoppers staged in Canal CC-CC at station 1+50. In addition, Contractor has a long-reach excavator, a front end loader, a water tank, and two fuel cubes staged on the property located at 1300 Curlew Avenue, Naples, FL, 34102.
- Contractor used support boat to install turbidity curtain across the mouth of Canal BB-BB and to remove it as necessary for allowing push boat to transport hopper between canals.
- Contractor used 323 excavator to remove 2 hoppers of material between stations 10+00 and 11+50.
- Contractor used push boat to position barge as necessary for grinding and removing material.
- Contractor used push boat to transport hopper from canal BB-BB to Canal CC-CC station 1+50.
- Contractor used 326 excavator to transfer 2 hoppers of material from hopper to dewatering site at 1300 Curlew Avenue and to redistribute the removed material.
- Contractor used 1 small dump truck and 1 large dump truck to transport removed material off site at 1300 Curlew Avenue.
- Contractor used 326 excavator to transfer removed material from the dewatering site to the truck beds. 8 truckloads of material were removed (4 loads with small truck and 4 loads with large truck).
- Contractor used push boat to transport barge, 323 excavator, and hopper back to Canal CC-CC station 1+00.

Friday 04-01-2022:

- Contractor has an excavator mounted on a barge staged in Canal CC-CC at station 1+00. Contractor also has a push boat, a support boat, and two hoppers staged in Canal CC-CC at station 1+50. In addition, Contractor has a long-reach excavator, a front end loader, a water tank, and two fuel cubes staged on the property located at 1300 Curlew Avenue, Naples, FL, 34102.
- Contractor greased 323 and 326 excavators.



WEEKLY SUMMARY REPORT – CONTRACT WEEK 24
21-036 EAST NAPLES BAY
DREDGING AND ROCK REMOVAL PROJECT



- Contractor refueled 323 and 326 excavators with small fuel cube and DEF fluid.
- Contractor used water tank to clean barge, excavators, hoppers, and push boat.
- Trash truck came to site at 1300 Curlew Avenue. Contractor used front end loader to transport debris from 1300 Curlew Avenue to the truck. Truck took debris off site.
- Contractor used 326 excavator to redistribute the removed material at the dewatering site at 1300 Curlew Avenue.
- Contractor installed new silt fence around the property at 1300 Curlew Avenue.
- Contractor pumped water out of bottom of barge.

Note: Daily reports with pictures attached for the week.



DAILY REPORT OF CONSTRUCTION
 21-036 EAST NAPLES BAY
 DREDGING AND ROCK REMOVAL PROJECT



Date: 03/28/2022			
Inspectors: SB	Stantec PIN: 2028113191		Accidents <input type="checkbox"/> Yes <input checked="" type="checkbox"/> No
Day of Week: Monday	Contract Day: 162/365	Week: 24	Accident Report #: N/A
High Temp (°F): 83°F	AM Conditions: Sunny	PM Conditions: Sunny	High Tide: 12:34 PM +2.1'
Low Temp (°F): 59°F	Wind: 3 mph	Wind: 11 mph	Low Tide: 5:26 AM -0.3'
Canal Worked In: BB-BB	Stations Worked Between:	3+50 to 4+50	

General	
#1 – Prime Contractor – Quality Enterprises:	
<ul style="list-style-type: none"> • Contractor has an excavator mounted on a barge staged in Canal CC-CC at station 1+00. Contractor also has a push boat, a support boat, and two hoppers staged in Canal CC-CC at station 1+50. In addition, Contractor has a long-reach excavator, a front end loader, a water tank, and two fuel cubes staged on the property located at 1300 Curlew Avenue, Naples, FL, 34102. • Contractor used push boat to transport barge, 323 excavator, and hopper from Canal CC-CC to Canal BB-BB. • Contractor used support boat to install turbidity curtain across the mouth of Canal BB-BB and to remove it as necessary to allow push boat in and out of the canal to transport hopper. • Contractor used 323 excavator to grind rock between stations 4+00 and 4+50. • Contractor used 323 excavator to remove 4 hoppers of material between stations 3+50 and 4+50. • Contractor used push boat to position barge as necessary for grinding and removing material. • Contractor used push boat to transport hopper from canal BB-BB to Canal CC-CC station 1+50. • Contractor used 326 excavator to transfer 4 hoppers of material from hopper to dewatering site at 1300 Curlew Avenue and to redistribute the removed material. • Contractor pumped water out of the bottom of the barge stationed at 3+00 	

Contractor(s) and Personnel										
#	Name	Type	#	Hrs.	Type	#	Hrs.	Type	#	Hrs.
1	Prime: Quality Enterprises	PM	0	0	Boat Captain	1	9	Mechanic	0	0
		Excavator Operator	2	9	Truck Driver	0	0	Assistant	1	9
		Technician	0	0	Superintendent	1	0.5	VP	0	0

Equipment					
Cont/ Sub #	Equipment ID	Description	# Pieces	# Used	Total Hours Used
1	N/A	Barge	1	1	9
1	CAT 323	Excavator	1	1	9
1	CAT 326	Excavator	1	1	5
1	02016	Front End Loader	1	0	0
1	FL6223TB	Push Boat	1	1	9
1	FL2474PP	Support Boat	1	1	5
1	N3758Z	Fuel Truck	0	0	0
1	P9457E	Water Truck	0	0	0
1	725RZM	Water Tank	0	0	0
1	Z67EAZ	Small Dump truck	0	0	0
1	PB727E	Dump truck	0	0	0
1	MB28DQ	Dump truck	0	0	0
1	MB26DQ	Utility Truck	0	0	0
1	DRHS18	Utility Truck	0	0	0
1	N9524Z	Transport Truck	0	0	0

Visitors			
Name	Company	Hours at Job Site	
		From:	To:

Inspector Name and Position	Hours at Job Site/Office		Total Hours
Sam Boyd, EIT	From: 8:30 AM	To: 4:30 PM	8.0



☀ 184°S (T) ☉ 26°8'15"N, 81°47'15"W ±39ft ▲ 9ft



Removed material at the dewatering site at 1300 Curlew Avenue

SW W NW
210 240 270 300
☉ 255°W (T) ☉ 26°8'13"N, 81°47'16"W ±42ft ▲ 8ft



28 Mar 2022, 08:34:09

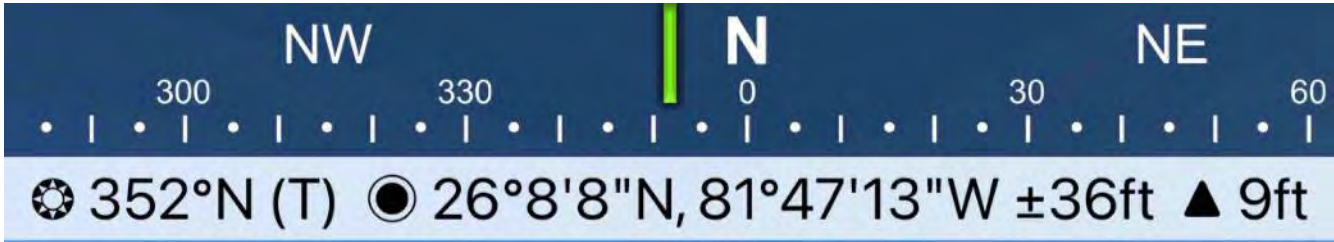
Push boat transporting barge and 323 excavator from Canal CC-CC to Canal BB-BB



☀ 6°N (T) ● 26°8'8"N, 81°47'16"W ±45ft ▲ 7ft



Turbidity curtain across the mouth of Canal BB-BB



28 Mar 2022, 10:04:41

323 excavator lifting spud to allow push boat to mobilize barge at station 4+50



☀ 18°N (T) ☉ 26°8'8"N, 81°47'13"W ±32ft ▲ 8ft



28 Mar 2022, 10:35:54

323 excavator grinding rock at station 4+50



28 Mar 2022, 10:37:07

323 excavator grinding rock at station 4+50

SW W NW
210 240 270 300 330

☉ 266°W (T) ● 26°8'13"N, 81°47'15"W ±19ft ▲ 9ft



28 Mar 2022, 11:27:44

326 excavator transferring material from hopper to dewatering site at 1300 Curlew Avenue

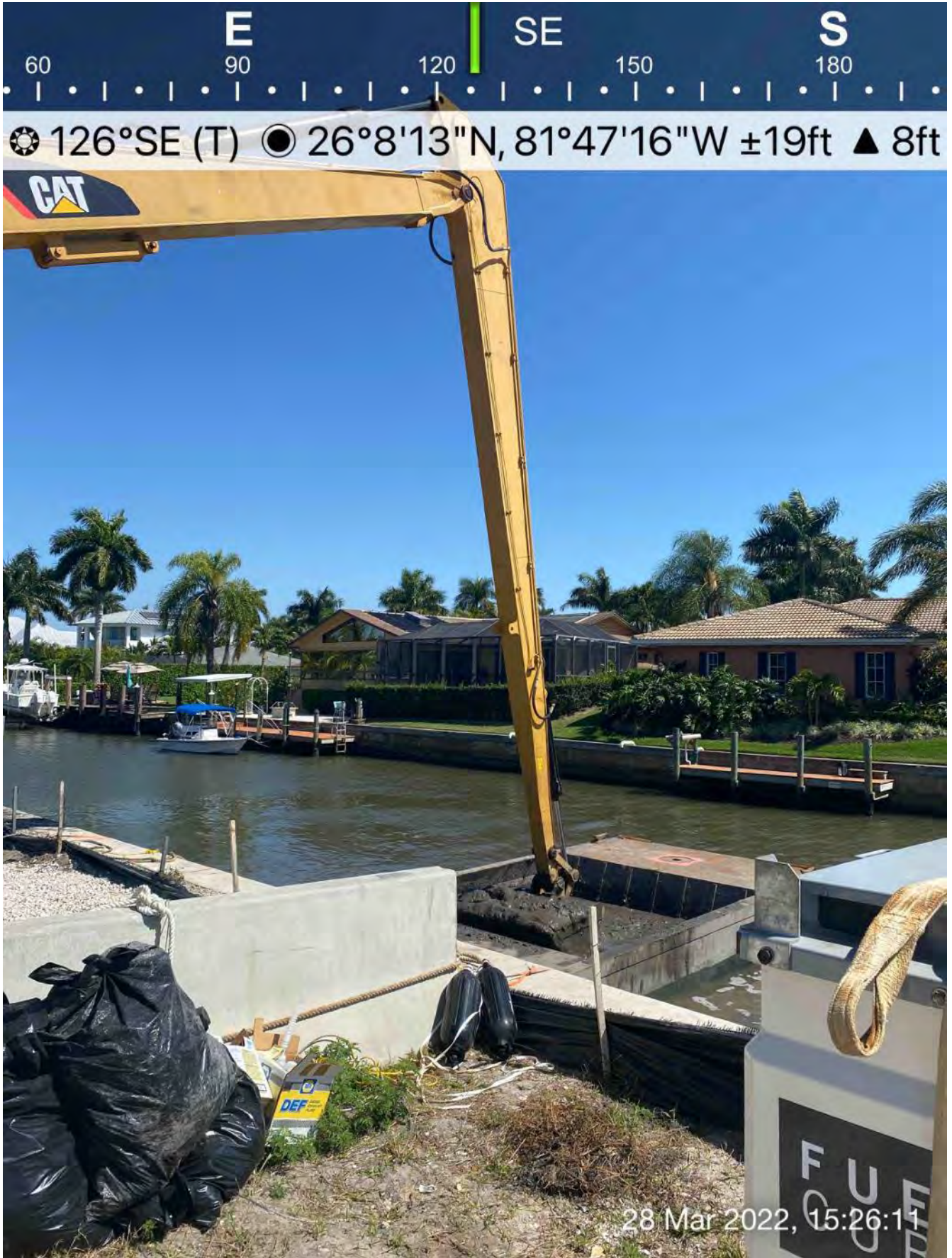
W 270 NW 300 N 0 30

☉ 322°NW (T) ☉ 26°8'8"N, 81°47'13"W ±13ft ▲ 8ft



28 Mar 2022, 13:57:45

323 excavator removing material from station 4+00 and transferring to hopper



326 excavator transferring material from hopper to dewatering site at 1300 Curlew Avenue



326 excavator transferring material from hopper to dewatering site at 1300 Curlew Avenue

E

SE

S

90

120

150

180

210

☀ 142°SE (T) ☉ 26°8'9"N, 81°47'14"W ±19ft ▲ 9ft



28 Mar 2022, 16:28:12

Pumping water out of the bottom of the barge at station 3+00



DAILY REPORT OF CONSTRUCTION
 21-036 EAST NAPLES BAY
 DREDGING AND ROCK REMOVAL PROJECT



Date: 03/29/2022			
Inspectors: SB	Stantec PIN: 2028113191		Accidents <input type="checkbox"/> Yes <input checked="" type="checkbox"/> No
Day of Week: Tuesday	Contract Day: 163/365	Week: 24	Accident Report #: N/A
High Temp (°F): 87°F	AM Conditions: Sunny	PM Conditions: Sunny	High Tide: 12:49 PM +2.1'
Low Temp (°F): 63°F	Wind: 5 mph	Wind: 9 mph	Low Tide: 6:14 AM -0.2'
Canal Worked In: BB-BB	Stations Worked Between:	3+50 to 1+50	

General	
#1 – Prime Contractor – Quality Enterprises:	
<ul style="list-style-type: none"> • Contractor has an excavator mounted on a barge staged in Canal BB-BB at station 3+00. Contractor also has a push boat, a support boat, and two hoppers staged in Canal CC-CC at station 1+50. In addition, Contractor has a long-reach excavator, a front end loader, a water tank, and two fuel cubes staged on the property located at 1300 Curlew Avenue, Naples, FL, 34102. • Contractor used support boat to install turbidity curtain across the mouth of Canal BB-BB and to remove it as necessary to allow push boat in and out of the canal to transport hopper. • Contractor used 323 excavator to remove 8 hoppers of material between stations 2+00 and 3+50. • Contractor used push boat to position barge as necessary for grinding and removing material. • Contractor used push boat to transport hopper from canal BB-BB to Canal CC-CC station 1+50. • Contractor used 326 excavator to transfer 8 hoppers of material from hopper to dewatering site at 1300 Curlew Avenue and to redistribute the removed material. 	

Contractor(s) and Personnel										
#	Name	Type	#	Hrs.	Type	#	Hrs.	Type	#	Hrs.
1	Prime: Quality Enterprises	PM	0	0	Boat Captain	1	9	Mechanic	0	0
		Excavator Operator	2	9	Truck Driver	0	0	Assistant	1	9
		Technician	0	0	Superintendent	1	0.5	VP	0	0

Equipment					
Cont/ Sub #	Equipment ID	Description	# Pieces	# Used	Total Hours Used
1	N/A	Barge	1	1	9
1	CAT 323	Excavator	1	1	9
1	CAT 326	Excavator	1	1	5
1	02016	Front End Loader	1	0	0
1	FL6223TB	Push Boat	1	1	9
1	FL2474PP	Support Boat	1	1	5
1	N3758Z	Fuel Truck	0	0	0
1	P9457E	Water Truck	0	0	0
1	725RZM	Water Tank	0	0	0
1	Z67EAZ	Small Dump truck	0	0	0
1	PB727E	Dump truck	0	0	0
1	MB28DQ	Dump truck	0	0	0
1	MB26DQ	Utility Truck	0	0	0
1	DRHS18	Utility Truck	0	0	0
1	N9524Z	Transport Truck	0	0	0

Visitors			
Name	Company	Hours at Job Site	
		From:	To:

Inspector Name and Position	Hours at Job Site/Office		Total Hours
Sam Boyd, EIT	From: 8:45 AM	To: 4:45 PM	8.0

SE S SW
120 150 180 210 240
☀ 185°S (T) ☉ 26°8'14"N, 81°47'15"W ±13ft ▲ 11ft



29 Mar 2022, 08:54:01

326 excavator transferring material from hopper to dewatering site at 1300 Curlew Avenue



29 Mar 2022 13:17:10

323 excavator removing material from station 3+50 and transferring to hopper

S 180 SW 210 240 W 270 300
☉ 229°SW (T) ☉ 26°8'9"N, 81°47'14"W ±85ft ▲ 8ft



29 Mar 2022, 08:59:16

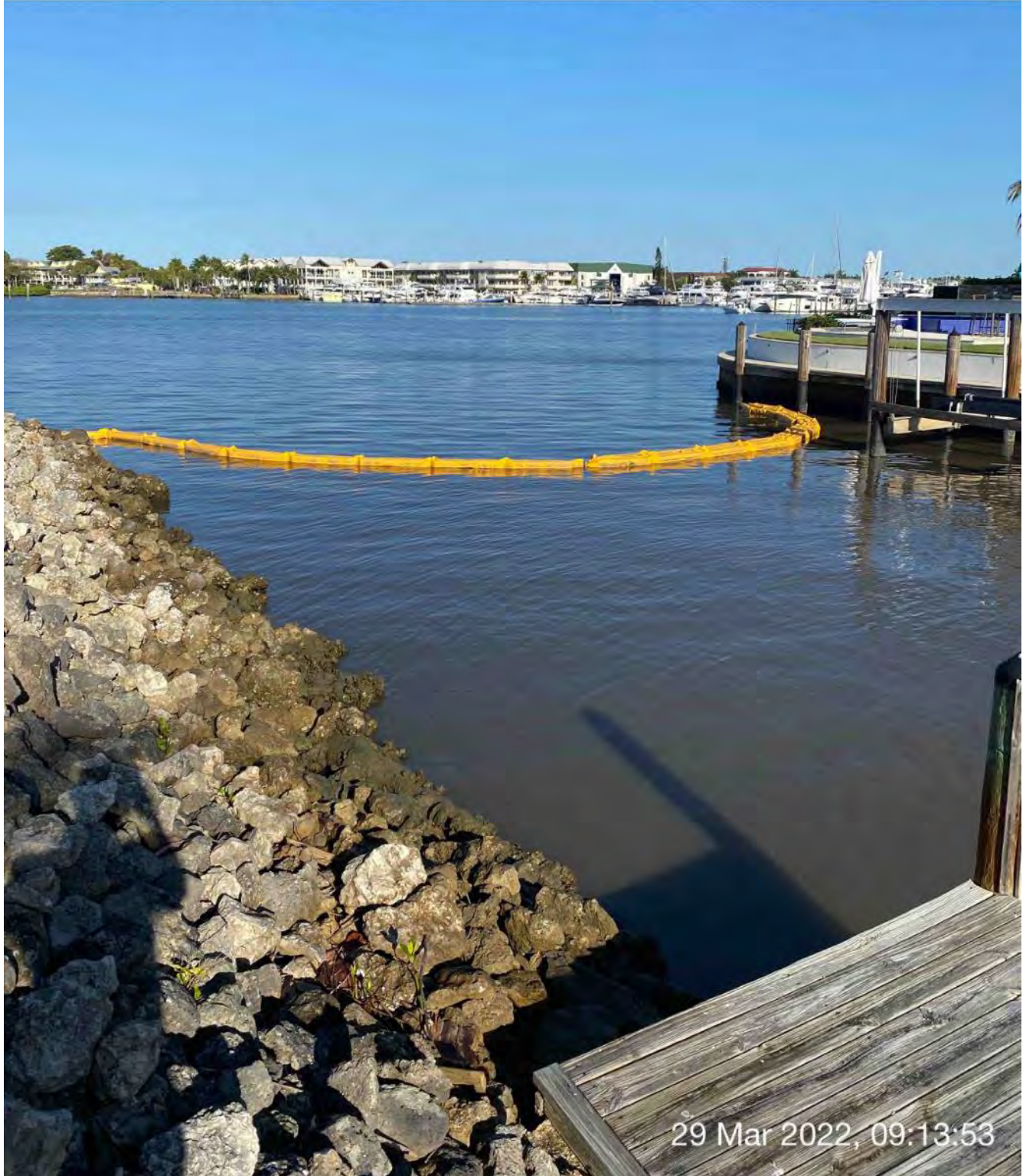
323 excavator lifting spud to allow push boat to mobilize barge at station 3+00

W 70 NW 300 330 N 0 NE 30
☀ 340°N (T) ☉ 26°8'8"N, 81°47'14"W ±49ft ▲ 9ft



29 Mar 2022, 09:12:34

323 excavator removing material from station 3+00 and transferring to hopper



Turbidity curtain installed across the mouth of Canal BB-BB



☉ 265°W (T) ☉ 26°8'13"N, 81°47'15"W ±13ft ▲ 9ft



29-Mar-2022, 10:22:19

326 excavator transferring material from hopper to dewatering site at 1300 Curlew Avenue



Support boat holding open turbidity curtain so that push boat can exit Canal BB-BB with hopper

E SE S
60 90 120 150 180
☀ 121°SE (T) ☉ 26°8'13"N, 81°47'16"W ±29ft ▲ 8ft



Push boat dropping off full hopper of removed material and taking empty hopper back to barge in Canal BB-BB



326 excavator transferring material from hopper to dewatering site at 1300 Curlew Avenue



DAILY REPORT OF CONSTRUCTION
 21-036 EAST NAPLES BAY
 DREDGING AND ROCK REMOVAL PROJECT



Date: 03/30/2022			
Inspectors: SB	Stantec PIN: 2028113191		Accidents <input type="checkbox"/> Yes <input checked="" type="checkbox"/> No
Day of Week: Wednesday	Contract Day: 164/365	Week: 24	Accident Report #: N/A
High Temp (°F): 88°F	AM Conditions: Sunny	PM Conditions: Sunny	High Tide: 1:08 PM +2.4'
Low Temp (°F): 65°F	Wind: 8 mph	Wind: 23 mph	Low Tide: 7:10 AM +0.4'
Canal Worked In: BB-BB	Stations Worked Between:	0+00 to 1+00	

General	
#1 – Prime Contractor – Quality Enterprises:	
<ul style="list-style-type: none"> • Contractor has an excavator mounted on a barge staged in Canal BB-BB at station 1+50. Contractor also has a push boat, a support boat, and two hoppers staged in Canal CC-CC at station 1+50. In addition, Contractor has a long-reach excavator, a front end loader, a water tank, and two fuel cubes staged on the property located at 1300 Curlew Avenue, Naples, FL, 34102. • Contractor used support boat to install turbidity curtain across the mouth of Canal BB-BB. • Contractor used 323 excavator to remove 7 hoppers of material between stations 0+00 and 1+00. • Contractor used push boat to position barge as necessary for grinding and removing material. • Contractor used push boat to transport hopper from canal BB-BB to Canal CC-CC station 1+50. • Contractor used 326 excavator to transfer 7 hoppers of material from hopper to dewatering site at 1300 Curlew Avenue and to redistribute the removed material. • Contractor removed turbidity curtain from across the mouth of Canal BB-BB. 	

Contractor(s) and Personnel										
#	Name	Type	#	Hrs.	Type	#	Hrs.	Type	#	Hrs.
1	Prime: Quality Enterprises	PM	0	0	Boat Captain	1	9	Mechanic	0	0
		Excavator Operator	2	9	Truck Driver	0	0	Assistant	1	9
		Technician	0	0	Superintendent	1	0.5	VP	0	0

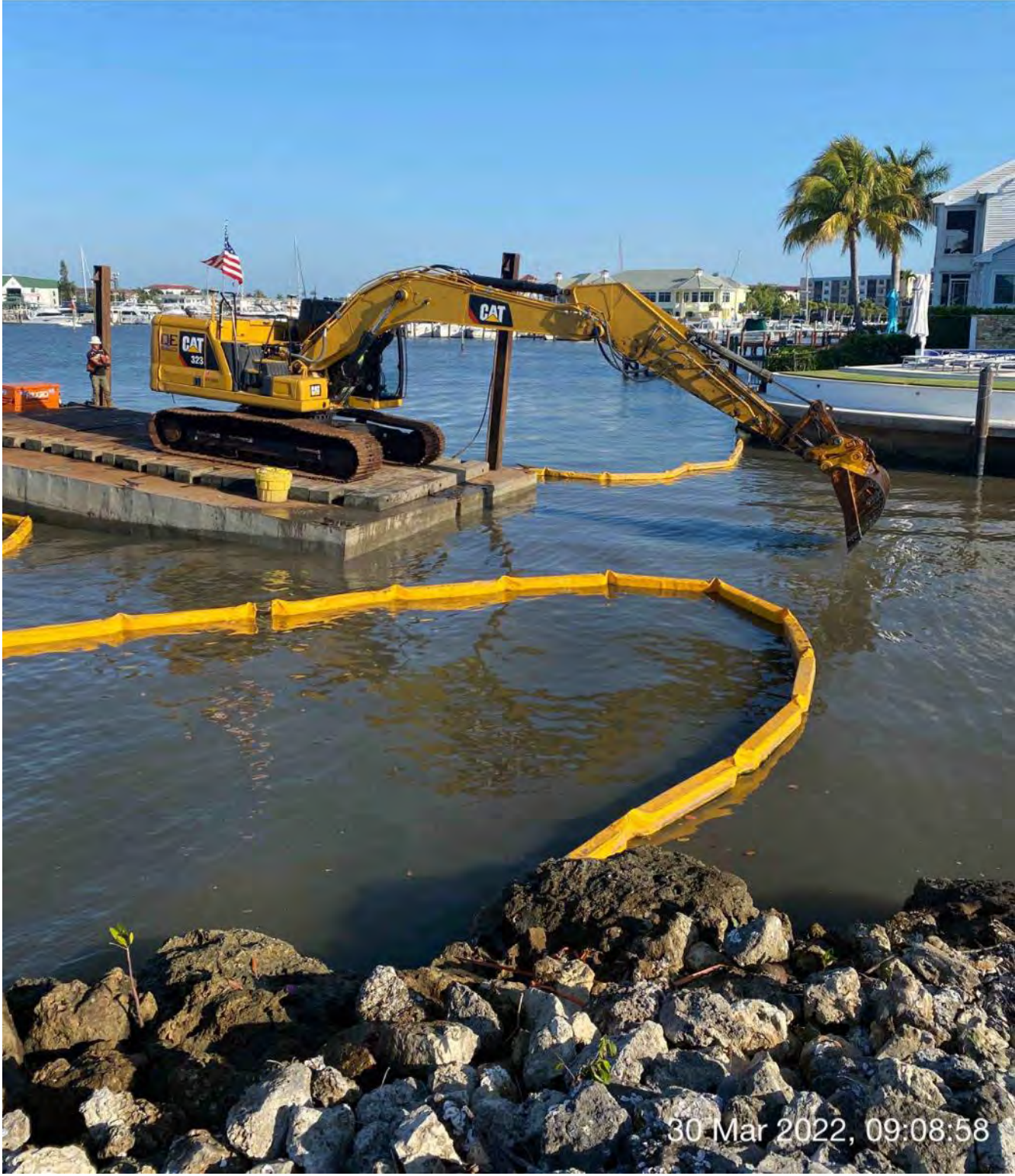
Equipment					
Cont/ Sub #	Equipment ID	Description	# Pieces	# Used	Total Hours Used
1	N/A	Barge	1	1	9
1	CAT 323	Excavator	1	1	9
1	CAT 326	Excavator	1	1	5
1	02016	Front End Loader	1	0	0
1	FL6223TB	Push Boat	1	1	9
1	FL2474PP	Support Boat	1	1	5
1	N3758Z	Fuel Truck	0	0	0
1	P9457E	Water Truck	0	0	0
1	725RZM	Water Tank	0	0	0
1	Z67EAZ	Small Dump truck	0	0	0
1	PB727E	Dump truck	0	0	0
1	MB28DQ	Dump truck	0	0	0
1	MB26DQ	Utility Truck	0	0	0
1	DRHS18	Utility Truck	0	0	0
1	N9524Z	Transport Truck	0	0	0

Visitors			
Name	Company	Hours at Job Site	
		From:	To:

Inspector Name and Position	Hours at Job Site/Office		Total Hours
Sam Boyd, EIT	From: 9:00 AM	To: 5:00 PM	8.0

W 270 NW 300 33 N 0 30

☀ 332°NW (T) ☉ 26°8'8"N, 81°47'16"W ±39ft ▲ 8ft



30 Mar 2022, 09:08:58

323 excavator removing material from station 1+00

240 W 270 300 | NW 330 N 0

☀ 309°NW (T) ● 26°8'8"N, 81°47'16"W ±13ft ▲ 7ft



30 Mar 2022, 09:10:38

323 excavator removing material from station 1+00 and transferring to hopper

SW W NW
210 240 270 300 330
☉ 267°W (T) ☉ 26°8'13"N, 81°47'15"W ±13ft ▲ 8ft



326 excavator transferring material from hopper to dewatering site at 1300 Curlew Avenue

W 270 NW 300 N 0
● 314°NW (T) ● 26°8'8"N, 81°47'16"W ±49ft ▲ 8ft



323 excavator removing material from station 0+00 and transferring to hopper



☀ 335°NW (T) ● 26°8'8"N, 81°47'16"W ±22ft ▲ 8ft



30 Mar 2022, 11:28:48

323 excavator removing material from station 0+50 and transferring to hopper

W NW N
240 270 300 330 0
☀ 309°NW (T) ☉ 26°8'8"N, 81°47'16"W ±13ft ▲ 5ft



323 excavator lifting spud to allow push boat to mobilize barge at station 0+50

SW 210 240 W 270 NW 300 330

☉ 262°W (T) ● 26°8'13"N, 81°47'15"W ±13ft ▲ 9ft



326 excavator transferring material from hopper to dewatering site at 1300 Curlew Avenue

E 90 SE 120 150 180 S SW 210
☀ 159°S (T) ☉ 26°8'13"N, 81°47'16"W ±22ft ▲ 8ft



Push boat dropping off full hopper of removed material and taking empty hopper back to barge in Canal BB-BB

SW W NW
210 240 270 300 330
277°W (T) 26°8'8"N, 81°47'16"W ±19ft ▲ 7ft



30 Mar 2022, 15:29:05

323 excavator removing material from station 0+00 and transferring to hopper



DAILY REPORT OF CONSTRUCTION
 21-036 EAST NAPLES BAY
 DREDGING AND ROCK REMOVAL PROJECT



Date: 03/31/2022			
Inspectors: SB	Stantec PIN: 2028113191	Accidents <input type="checkbox"/> Yes <input checked="" type="checkbox"/> No	
Day of Week: Thursday	Contract Day: 165/365	Week: 24	Accident Report #: N/A
High Temp (°F): 87°F	AM Conditions: Cloudy	PM Conditions: Sunny	High Tide: 1:29 PM +2.6'
Low Temp (°F): 71°F	Wind: 8 mph	Wind: 23 mph	Low Tide: 7:34 AM +0.1'
Canal Worked In: BB-BB	Stations Worked Between:	10+00 to 11+50	

General
<p>#1 – Prime Contractor – Quality Enterprises:</p> <ul style="list-style-type: none"> • Contractor has an excavator mounted on a barge staged in Canal BB-BB at station 1+50. Contractor also has a push boat, a support boat, and two hoppers staged in Canal CC-CC at station 1+50. In addition, Contractor has a long-reach excavator, a front end loader, a water tank, and two fuel cubes staged on the property located at 1300 Curlew Avenue, Naples, FL, 34102. • Contractor used support boat to install turbidity curtain across the mouth of Canal BB-BB and to remove it as necessary for allowing push boat to transport hopper between canals. • Contractor used 323 excavator to remove 2 hoppers of material between stations 10+00 and 11+50. • Contractor used push boat to position barge as necessary for grinding and removing material. • Contractor used push boat to transport hopper from canal BB-BB to Canal CC-CC station 1+50. • Contractor used 326 excavator to transfer 2 hoppers of material from hopper to dewatering site at 1300 Curlew Avenue and to redistribute the removed material. • Contractor used 1 small dump truck and 1 large dump truck to transport removed material off site at 1300 Curlew Avenue. • Contractor used 326 excavator to transfer removed material from the dewatering site to the truck beds. 8 truckloads of material were removed (4 loads with small truck and 4 loads with large truck). • Contractor used push boat to transport barge, 323 excavator, and hopper back to Canal CC-CC station 1+00.

Contractor(s) and Personnel										
#	Name	Type	#	Hrs.	Type	#	Hrs.	Type	#	Hrs.
1	Prime: Quality Enterprises	PM	0	0	Boat Captain	1	9	Mechanic	1	1
		Excavator Operator	2	9	Truck Driver	2	7	Assistant	1	9
		Technician	0	0	Superintendent	0	0	VP	0	0

Equipment					
Cont/ Sub #	Equipment ID	Description	# Pieces	# Used	Total Hours Used
1	N/A	Barge	1	1	9
1	CAT 323	Excavator	1	1	9
1	CAT 326	Excavator	1	1	7
1	02016	Front End Loader	1	0	0
1	FL6223TB	Push Boat	1	1	9
1	FL2474PP	Support Boat	1	1	3
1	N3758Z	Fuel Truck	0	0	0
1	P9457E	Water Truck	0	0	0
1	725RZM	Water Tank	0	0	0
1	Z67EAZ	Small Dump truck	1	1	5
1	PB727E	Dump truck	0	0	0
1	MB28DQ	Dump truck	1	1	7
1	MB26DQ	Utility Truck	0	0	0
1	DRHS18	Utility Truck	0	0	0
1	N9524Z	Transport Truck	0	0	0

Visitors			
Name	Company	Hours at Job Site	
		From:	To:

Inspector Name and Position	Hours at Job Site/Office		Total Hours
Sam Boyd, EIT	From: 8:30 AM	To: 4:30 PM	8.0

SW W NW
210 240 270 300
☉ 255°W (T) ☉ 26°8'13"N, 81°47'16"W ±13ft ▲ 4ft



Push boat transporting empty hopper from Canal CC-CC to Canal BB-BB



☉ 358°N (T) ● 26°8'8"N, 81°47'17"W ±55ft ▲ 8ft



31 Mar 2022, 10:35:35

Turbidity curtain across the mouth of Canal BB-BB



☉ 48°NE (T) ☉ 26°8'9"N, 81°47'6"W ±13ft ▲ 7ft



31 Mar 2022, 10:50:07

323 excavator removing material from station 11+00 and transferring to hopper

S 180 SW 210 240 W 270 300
☉ 239°SW (T) ☉ 26°8'15"N, 81°47'15"W ±29ft ▲ 8ft



326 excavator transferring removed material from dewatering site to dump truck at 1300 Curlew Avenue

E SE S
60 90 120 150 180
☀ 122°SE (T) ☉ 26°8'13"N, 81°47'16"W ±22ft ▲ 9ft



Push boat dropping off full hopper of material and picking up empty hopper to transport back to barge

E SE S
60 90 120 150 180
☀ 126°SE (T) ● 26°8'14"N, 81°47'16"W ±42ft ▲ 9ft



326 excavator transferring material from hopper to dewatering site at 1300 Curlew Avenue



323 excavator removing material from station 10+00 and transferring to hopper



DAILY REPORT OF CONSTRUCTION
 21-036 EAST NAPLES BAY
 DREDGING AND ROCK REMOVAL PROJECT



Date: 04/01/2022			
Inspectors: SB	Stantec PIN: 2028113191		Accidents <input type="checkbox"/> Yes <input checked="" type="checkbox"/> No
Day of Week: Friday	Contract Day: 166/365	Week: 24	Accident Report #: N/A
High Temp (°F): 86°F	AM Conditions: Cloudy	PM Conditions: Cloudy	High Tide: 1:51 PM +2.6'
Low Temp (°F): 75°F	Wind: 11 mph	Wind: 17 mph	Low Tide: 8:10 AM +0.3'
Canal Worked In: N/A	Stations Worked Between:	N/A	

General
<p>#1 – Prime Contractor – Quality Enterprises:</p> <ul style="list-style-type: none"> • Contractor has an excavator mounted on a barge staged in Canal CC-CC at station 1+00. Contractor also has a push boat, a support boat, and two hoppers staged in Canal CC-CC at station 1+50. In addition, Contractor has a long-reach excavator, a front end loader, a water tank, and two fuel cubes staged on the property located at 1300 Curlew Avenue, Naples, FL, 34102. • Contractor greased 323 and 326 excavators. • Contractor refueled 323 and 326 excavators with small fuel cube and DEF fluid. • Contractor used water tank to clean barge, excavators, hoppers, and push boat. • Trash truck came to site at 1300 Curlew Avenue. Contractor used front end loader to transport debris from 1300 Curlew Avenue to the truck. Truck took debris off site. • Contractor used 326 excavator to redistribute the removed material at the dewatering site at 1300 Curlew Avenue. • Contractor installed new silt fence around the property at 1300 Curlew Avenue. • Contractor pumped water out of bottom of barge.

Contractor(s) and Personnel										
#	Name	Type	#	Hrs.	Type	#	Hrs.	Type	#	Hrs.
1	Prime: Quality Enterprises	PM	0	0	Boat Captain	0	0	Mechanic	0	0
		Excavator Operator	2	8	Truck Driver	1	1	Assistant	1	8
		Technician	0	0	Superintendent	1	0.5	VP	0	0

Equipment					
Cont/ Sub #	Equipment ID	Description	# Pieces	# Used	Total Hours Used
1	N/A	Barge	1	1	3
1	CAT 323	Excavator	1	1	2
1	CAT 326	Excavator	1	1	3
1	02016	Front End Loader	1	1	1
1	FL6223TB	Push Boat	1	0	0
1	FL2474PP	Support Boat	1	0	0
1	N3758Z	Fuel Truck	0	0	0
1	P9457E	Water Truck	0	0	0
1	725RZM	Water Tank	1	1	2
1	Z68EAZ	Small Dump truck	1	1	1
1	PB727E	Dump truck	0	0	0
1	MB28DQ	Dump truck	0	0	0
1	MB26DQ	Utility Truck	0	0	0
1	DRHS18	Utility Truck	0	0	0
1	N9524Z	Transport Truck	0	0	0

Visitors			
Name	Company	Hours at Job Site	
		From:	To:

Inspector Name and Position	Hours at Job Site/Office		Total Hours
Sam Boyd, EIT	From: 8:00 AM	To: 3:30 PM	7.5

S 180 SW 210 240 W 270 NW 300

☉ 249°W (T) ● 26°8'13"N, 81°47'15"W ±13ft ▲ 3ft



Support boat, 2 hoppers, barge, and 323 excavator stationed in Canal CC-CC between stations 1+00 and 2+00

SW W NW
210 240 270 300 330

☉ 261°W (T) ☉ 26°8'15"N, 81°47'15"W ±13ft ▲ 8ft



Front end loader transporting debris from 1300 Curlew Avenue to truck bed

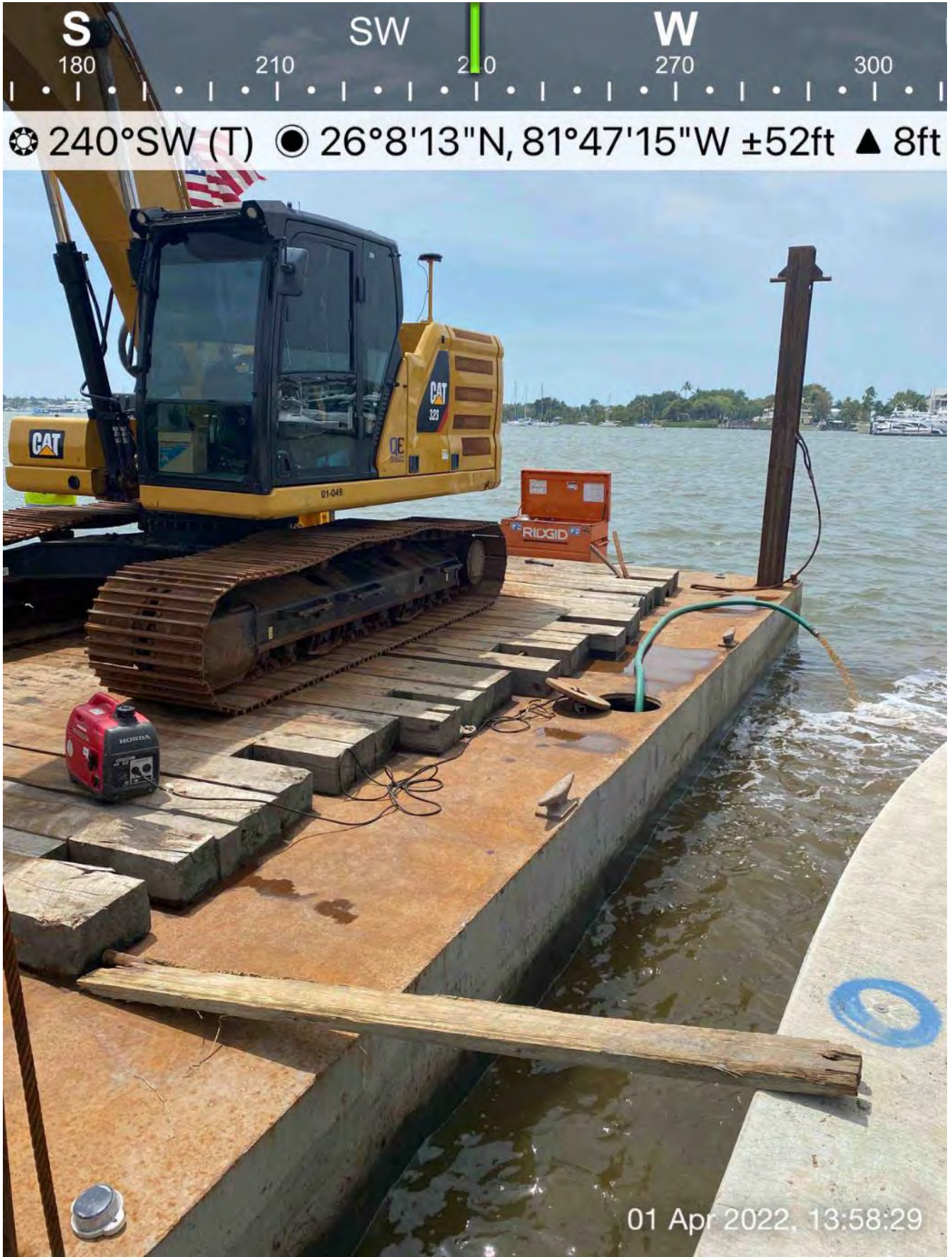


☉ 112°E (T) ● 26°8'13"N, 81°47'16"W ±32ft ▲ 8ft



01 Apr 2022, 13:24:15

New silt fence installed around perimeter of property at 1300 Curlew Avenue



Water being pumped out from the bottom of the barge