



# WEEKLY SUMMARY REPORT – CONTRACT WEEK 23

21-036 EAST NAPLES BAY

## DREDGING AND ROCK REMOVAL PROJECT



Date: <b>3/21/2022 to 3/25/2022</b>			
Inspectors: <b>Sam Boyd</b>	Stantec PIN: <b>2028113191</b>		Accidents <input type="checkbox"/> Yes <input checked="" type="checkbox"/> No
Days of Week: <b>Monday to Friday</b>	Contract Days: <b>155 to 159</b>	Total Days: <b>365</b>	Accident Report #: <b>N/A</b>
Canal(s) Worked In: <b>CC-CC / BB-BB</b>	Stations Worked Between: <b>2+50 to 2+75 / 4+50 to 11+50</b>		

### General

### Remarks

#### #1 – Prime Contractor – Quality Enterprises:

##### Monday 03-21-2022:

- Contractor has an excavator mounted on a barge staged in Canal CC-CC at station 2+00. Contractor also has a push boat, a support boat, and a hopper staged in Canal CC-CC at station 2+00. In addition, Contractor has a long-reach excavator, a front end loader, a water tank, and two fuel cubes staged on the property located at 1300 Curlew Avenue, Naples, FL, 34102.
- Contractor installed turbidity curtain across the mouth of Canal CC-CC.
- Contractor used 323 excavator to check bottom elevations, grind material, and remove material below the boat lift at 1350 Curlew Avenue, station 2+50 in Canal CC-CC.
- Contractor used support boat to open and close curtain to allow Canal CC-CC resident out of the canal.
- Contractor used push boat to transport barge, 323 excavator, and hopper from Canal CC-CC to Canal BB-BB.
- Contractor used support boat to install turbidity curtain across the mouth of Canal BB-BB, and to remove it as necessary to allow push boat in and out of the canal to transport hopper.
- Contractor used 323 excavator to remove 2 hoppers of material between stations 9+50 and 11+00.
- Contractor used push boat to position barge as necessary for removing material.
- Contractor used push boat to transport hopper from canal BB-BB to Canal CC-CC station 1+50.
- Contractor used 326 excavator to transfer 2 hoppers of material from hopper to dewatering site at 1300 Curlew Avenue and to redistribute the removed material.

##### Tuesday 03-22-2022:

- Contractor has an excavator mounted on a barge staged in Canal BB-BB at station 9+00. Contractor also has a push boat, a support boat, and a hopper staged in Canal CC-CC at station 2+00. In addition, Contractor has a long-reach excavator, a front end loader, a water tank, and two fuel cubes staged on the property located at 1300 Curlew Avenue, Naples, FL, 34102.
- Contractor used support boat to install turbidity curtain across the mouth of Canal BB-BB.
- Contractor used 323 excavator to remove 5 hoppers of material between stations 8+00 and 9+50.
- Contractor used push boat to position barge as necessary for removing material.
- Contractor used push boat to transport hopper from canal BB-BB to Canal CC-CC station 1+50.
- Contractor used support boat to remove and install turbidity curtain as necessary to allow push boat in and out



## WEEKLY SUMMARY REPORT – CONTRACT WEEK 23

21-036 EAST NAPLES BAY

### DREDGING AND ROCK REMOVAL PROJECT



of the canal to transport hopper.

- Contractor used 326 excavator to transfer 5 hoppers of material from hopper to dewatering site at 1300 Curlew Avenue and to redistribute the removed material.

#### Wednesday 03-23-2022:

- Contractor has an excavator mounted on a barge and a hopper staged in Canal BB-BB at station 8+00. Contractor also has a push boat, a support boat, and another hopper staged in Canal CC-CC at station 2+00. In addition, Contractor has a long-reach excavator, a front end loader, a water tank, and two fuel cubes staged on the property located at 1300 Curlew Avenue, Naples, FL, 34102.
- Contractor attached tires to the new hopper.
- Mechanic came to site at 1300 Curlew Avenue to take one of the manhole covers from the old hopper.
- Contractor used support boat to install turbidity curtain across the mouth of Canal BB-BB.
- Contractor used 323 excavator to remove 6 hoppers of material between stations 6+50 and 8+50.
- Contractor used push boat to position barge as necessary for removing material.
- Contractor used push boat to transport hopper from canal BB-BB to Canal CC-CC station 1+50 and back again.
- Contractor used support boat to remove and install turbidity curtain as necessary to allow push boat in and out of the canal to transport hoppers.
- Contractor used 326 excavator to transfer 6 hoppers of material from hopper to dewatering site at 1300 Curlew Avenue and to redistribute the removed material.

#### Thursday 03-24-2022:

- Contractor has an excavator mounted on a barge and a hopper staged in Canal BB-BB at station 6+50. Contractor also has a push boat, a support boat, and another hopper staged in Canal CC-CC at station 2+00. In addition, Contractor has a long-reach excavator, a front end loader, a water tank, and two fuel cubes staged on the property located at 1300 Curlew Avenue, Naples, FL, 34102.
- Contractor used 326 excavator to transport fuel cube to push boat. Push boat transported fuel cube to Canal BB-BB station 6+50 where it was used to refuel 323 excavator. Push boat transported fuel cube back to Canal CC-CC and 326 excavator was used to transport fuel cube back to southwest corner of 1300 Curlew Avenue.
- Contractor used support boat to install turbidity curtain across the mouth of Canal BB-BB.
- Contractor used 323 excavator to remove 5 hoppers of material between stations 5+50 and 6+50.
- Contractor used push boat to position barge as necessary for removing material.
- Contractor used push boat to transport hopper from canal BB-BB to Canal CC-CC station 1+50 and back again.
- Contractor used support boat to remove and install turbidity curtain as necessary to allow push boat in and out of the canal to transport hoppers.
- Contractor used 326 excavator to transfer 5 hoppers of material from hopper to dewatering site at 1300 Curlew Avenue and to redistribute the removed material.



## WEEKLY SUMMARY REPORT – CONTRACT WEEK 23

21-036 EAST NAPLES BAY

### DREDGING AND ROCK REMOVAL PROJECT



#### Friday 03-25-2022:

- Contractor has an excavator mounted on a barge and a hopper staged in Canal BB-BB at station 5+50. Contractor also has a push boat, a support boat, and another hopper staged in Canal CC-CC at station 2+00. In addition, Contractor has a long-reach excavator, a front end loader, a water tank, and two fuel cubes staged on the property located at 1300 Curlew Avenue, Naples, FL, 34102.
- Contractor used support boat to install turbidity curtain across the mouth of Canal BB-BB.
- Contractor used 323 excavator to grind rock between stations 5+00 and 5+50.
- Contractor used 323 excavator to remove 3.5 hoppers of material between stations 4+50 and 5+50.
- Contractor used push boat to position barge as necessary for grinding and removing material.
- Contractor used push boat to transport hopper from canal BB-BB to Canal CC-CC station 1+50 and back again.
- Contractor used support boat to remove and install turbidity curtain as necessary to allow push boat in and out of the canal to transport hoppers.
- Contractor used 326 excavator to transfer 3.5 hoppers of material from hopper to dewatering site at 1300 Curlew Avenue and to redistribute the removed material.
- Contractor used push boat to transport barge and 323 excavator from Canal BB-BB to Canal CC-CC station 2+00.
- Contractor used water tank to clean equipment.

***Note: Daily reports with pictures attached for the week.***



**DAILY REPORT OF CONSTRUCTION**  
 21-036 EAST NAPLES BAY  
 DREDGING AND ROCK REMOVAL PROJECT



Date: <b>03/21/2022</b>			
Inspectors: <b>SB</b>	Stantec PIN: <b>2028113191</b>		Accidents <input type="checkbox"/> Yes <input checked="" type="checkbox"/> No
Day of Week: <b>Monday</b>	Contract Day: <b>155/365</b>	Week: <b>23</b>	Accident Report #: <b>N/A</b>
High Temp (°F): <b>88°F</b>	AM Conditions: <b>Sunny</b>	PM Conditions: <b>Sunny</b>	High Tide: <b>3:13 PM +2.7'</b>
Low Temp (°F): <b>65°F</b>	Wind: <b>14 mph</b>	Wind: <b>15 mph</b>	Low Tide: <b>9:57 AM +0.6'</b>
Canal Worked In: <b>CC-CC / BB-BB</b>	Stations Worked Between:	<b>2+50 to 2+75 / 9+50 to 11+00</b>	

General
<p><b>#1 – Prime Contractor – Quality Enterprises:</b></p> <ul style="list-style-type: none"> <li>• Contractor has an excavator mounted on a barge staged in Canal CC-CC at station 2+00. Contractor also has a push boat, a support boat, and a hopper staged in Canal CC-CC at station 2+00. In addition, Contractor has a long-reach excavator, a front end loader, a water tank, and two fuel cubes staged on the property located at 1300 Curlew Avenue, Naples, FL, 34102.</li> <li>• Contractor installed turbidity curtain across the mouth of Canal CC-CC.</li> <li>• Contractor used 323 excavator to check bottom elevations, grind material, and remove material below the boat lift at 1350 Curlew Avenue, station 2+50 in Canal CC-CC.</li> <li>• Contractor used support boat to open and close curtain to allow Canal CC-CC resident out of the canal.</li> <li>• Contractor used push boat to transport barge, 323 excavator, and hopper from Canal CC-CC to Canal BB-BB.</li> <li>• Contractor used support boat to install turbidity curtain across the mouth of Canal BB-BB, and to remove it as necessary to allow push boat in and out of the canal to transport hopper.</li> <li>• Contractor used 323 excavator to remove 2 hoppers of material between stations 9+50 and 11+00.</li> <li>• Contractor used push boat to position barge as necessary for removing material.</li> <li>• Contractor used push boat to transport hopper from canal BB-BB to Canal CC-CC station 1+50.</li> <li>• Contractor used 326 excavator to transfer 2 hoppers of material from hopper to dewatering site at 1300 Curlew Avenue and to redistribute the removed material.</li> </ul>

Contractor(s) and Personnel										
#	Name	Type	#	Hrs.	Type	#	Hrs.	Type	#	Hrs.
1	Prime: <b>Quality Enterprises</b>	PM	0	0	Boat Captain	1	9	Mechanic	0	0
		Excavator Operator	2	9	Truck Driver	0	0	Assistant	1	9
		Technician	0	0	Superintendent	1	3	VP	0	0

Equipment					
Cont/ Sub #	Equipment ID	Description	# Pieces	# Used	Total Hours Used
1	N/A	Barge	1	1	9
1	CAT 323	Excavator	1	1	9
1	CAT 326	Excavator	1	1	4
1	02016	Front End Loader	1	0	0
1	FL6223TB	Push Boat	1	1	9
1	FL2474PP	Support Boat	1	1	4
1	N3758Z	Fuel Truck	0	0	0
1	P9457E	Water Truck	0	0	0
1	725RZM	Water Tank	0	0	0
1	Z67EAZ	Small Dump truck	0	0	0
1	PB727E	Dump truck	0	0	0
1	MB28DQ	Dump truck	0	0	0
1	MB26DQ	Utility Truck	0	0	0
1	DRHS18	Utility Truck	0	0	0
1	N9524Z	Transport Truck	0	0	0

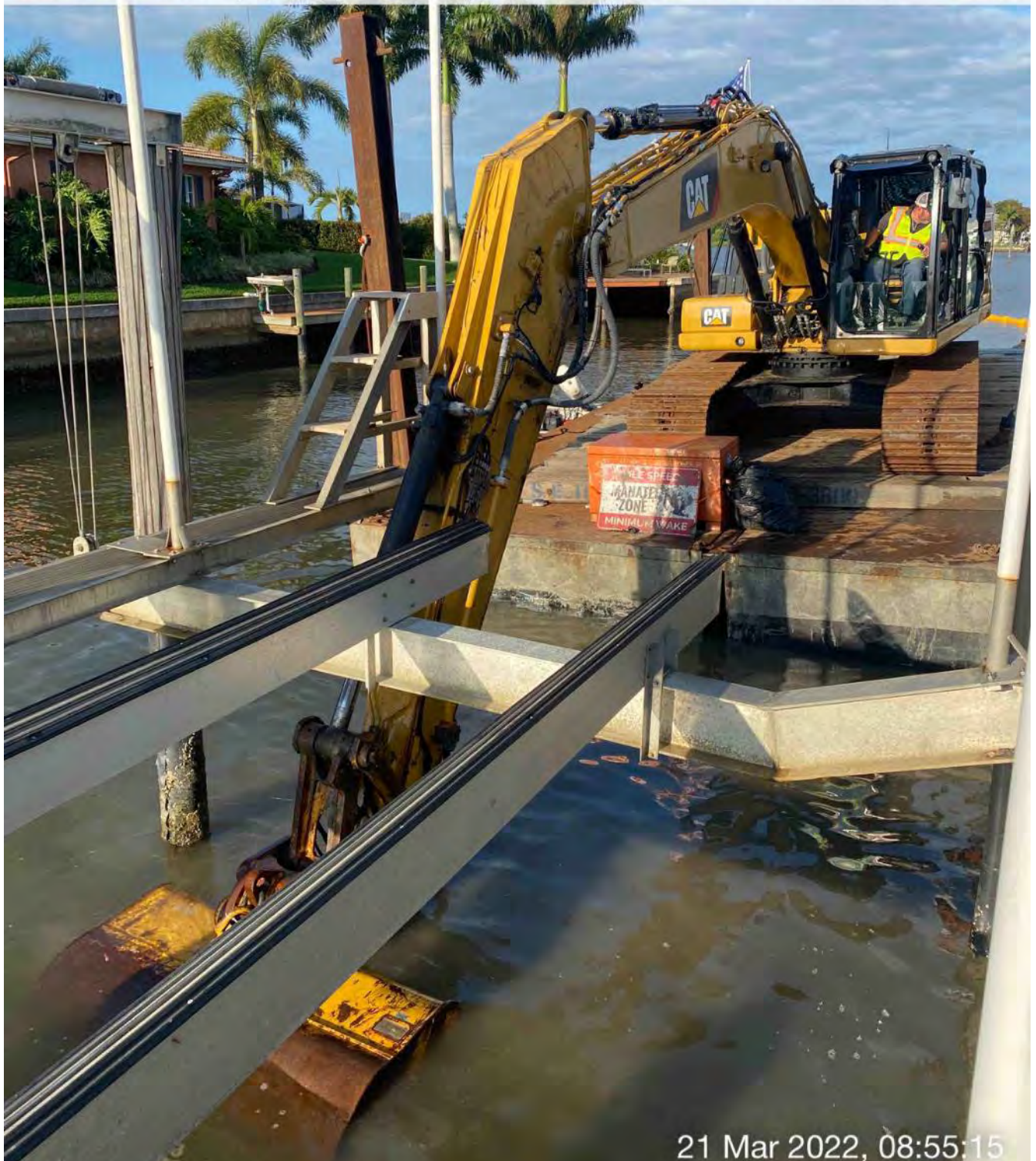
Visitors			
Name	Company	Hours at Job Site	
		From:	To:

Inspector Name and Position	Hours at Job Site/Office		Total Hours
Sam Boyd, EIT	From: 8:45 AM	To: 4:45 PM	8.0





☉ 228°SW (T) ● 26°8'13"N, 81°47'15"W ±19ft ▲ 8ft



21 Mar 2022, 08:55:15

323 excavator checking elevations and scooping material under boat lift at station 2+50 in Canal CC-CC

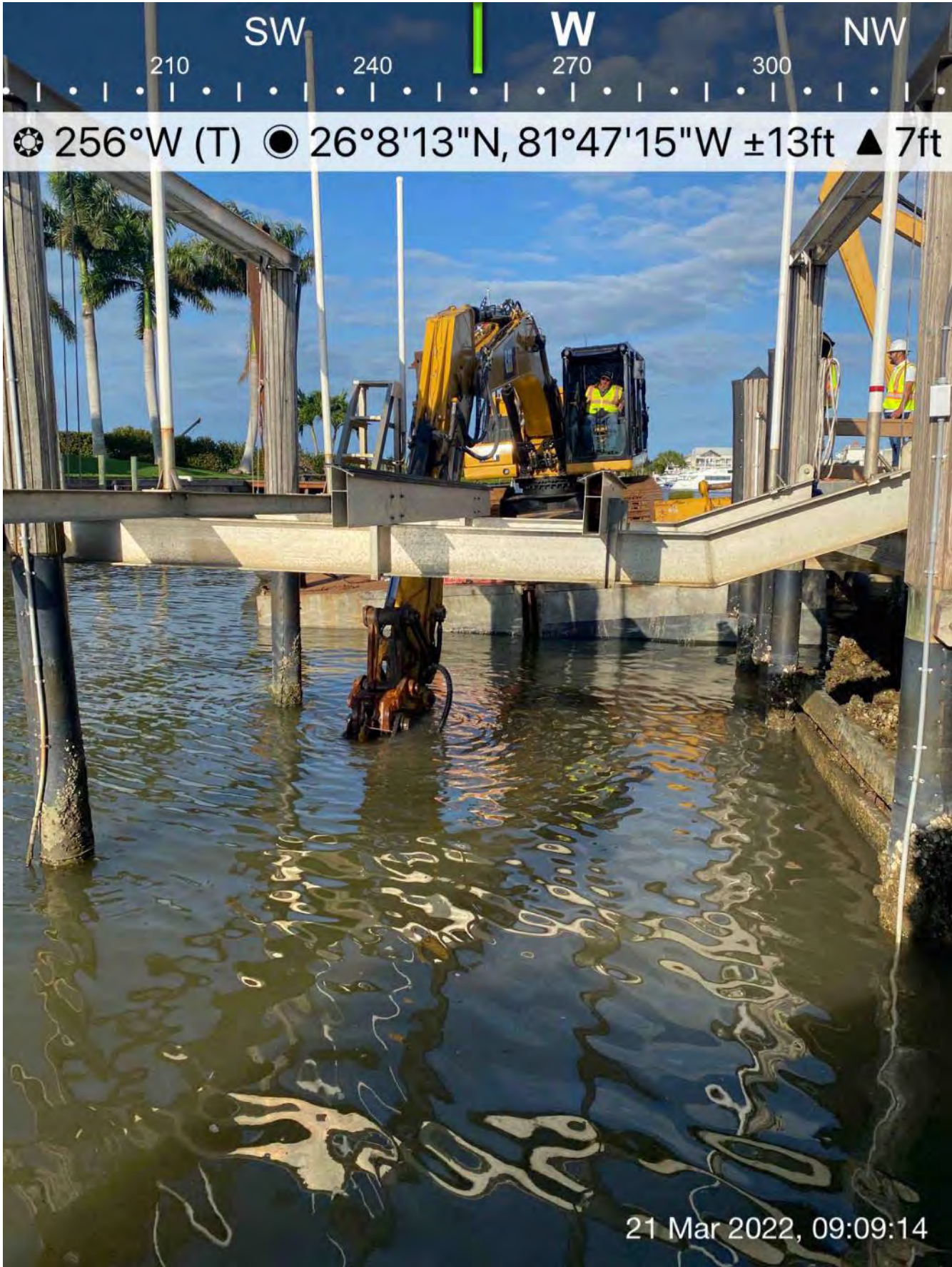


S 180 SW 210 24 W 270 300 N  
☉ 242°SW (T) ☉ 26°8'13"N, 81°47'16"W ±16ft ▲ 8ft



Turbidity curtain installed across the mouth of Canal CC-CC





323 excavator checking elevations and grinding material under boat lift at station 2+50 in Canal CC-CC





☀ 351°N (T) ● 26°8'8"N, 81°47'16"W ±32ft ▲ 8ft



**Turbidity curtain installed across the mouth of Canal CC-CC**





☉ 42°NE (T) ☉ 26°8'9"N, 81°47'6"W ±29ft ▲ 8ft



21 Mar 2022, 11:31:06

323 excavator removing material from station 11+00 and transferring to hopper





☀ 42°NE (T) ● 26°8'9"N, 81°47'7"W ±29ft ▲ 9ft



323 excavator lifting spud to allow push boat to mobilize barge at station 10+00





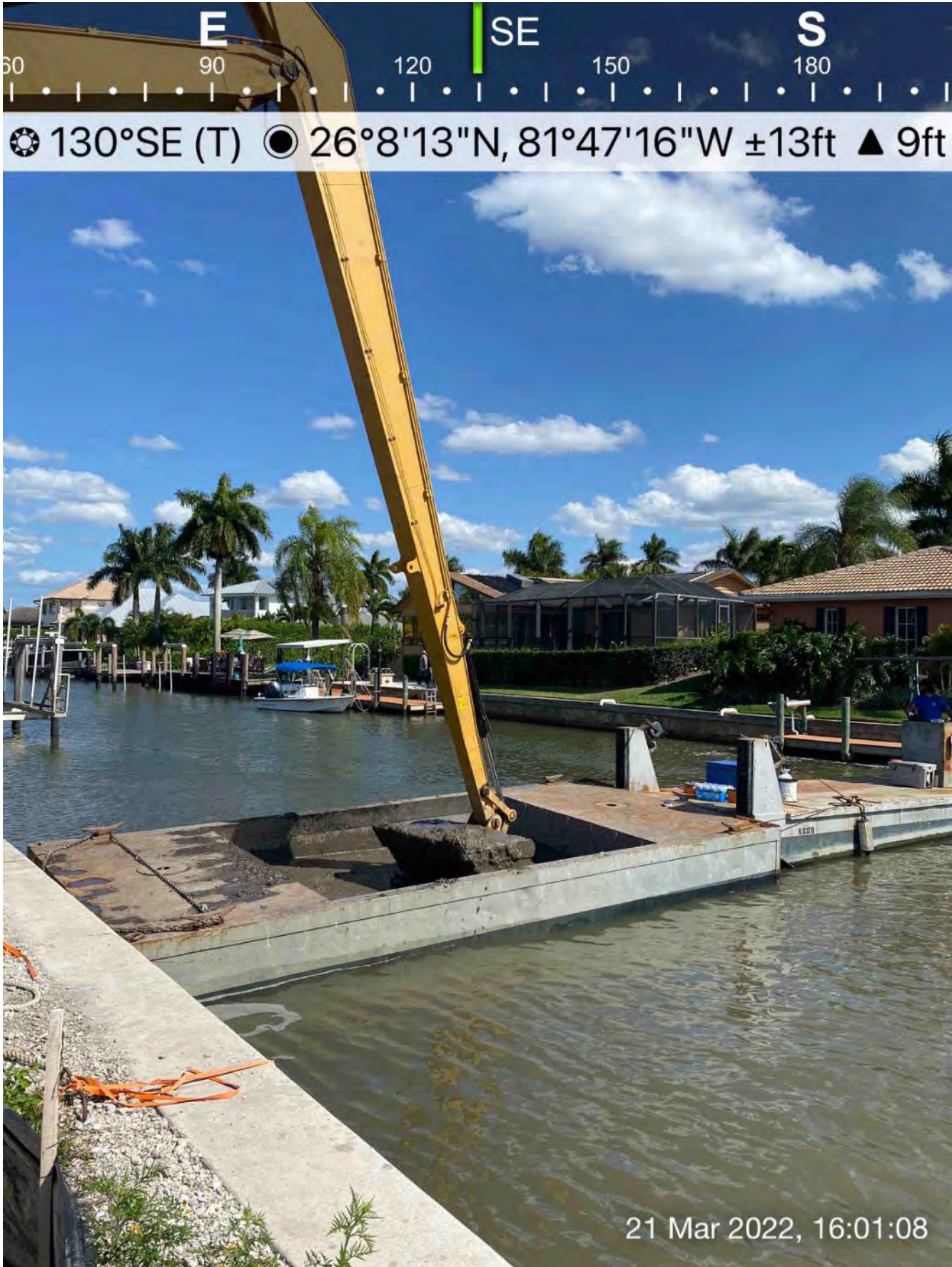
☀ 327°NW (T) ● 26°8'9"N, 81°47'7"W ±13ft ▲ 5ft



21 Mar 2022, 14:59:09

323 excavator removing material from station 10+00 and transferring to hopper





326 excavator transferring material from hopper to dewatering site at 1300 Curlew Avenue





☉ 174°S (T) ☉ 26°8'14"N, 81°47'16"W ±13ft ▲ 9ft



326 excavator transferring material from hopper to dewatering site at 1300 Curlew Avenue





**DAILY REPORT OF CONSTRUCTION**  
 21-036 EAST NAPLES BAY  
 DREDGING AND ROCK REMOVAL PROJECT



Date: <b>03/22/2022</b>			
Inspectors: <b>SB</b>	Stantec PIN: <b>2028113191</b>		Accidents <input type="checkbox"/> Yes <input checked="" type="checkbox"/> No
Day of Week: <b>Tuesday</b>	Contract Day: <b>156/365</b>	Week: <b>23</b>	Accident Report #: <b>N/A</b>
High Temp (°F): <b>88°F</b>	AM Conditions: <b>Sunny</b>	PM Conditions: <b>Sunny</b>	High Tide: <b>3:43 PM +2.7'</b>
Low Temp (°F): <b>64°F</b>	Wind: <b>10 mph</b>	Wind: <b>17 mph</b>	Low Tide: <b>10:28 AM +0.9'</b>
Canal Worked In: <b>BB-BB</b>	Stations Worked Between:	<b>8+00 to 9+50</b>	

**General**

**#1 – Prime Contractor – Quality Enterprises:**

- Contractor has an excavator mounted on a barge staged in Canal BB-BB at station 9+00. Contractor also has a push boat, a support boat, and a hopper staged in Canal CC-CC at station 2+00. In addition, Contractor has a long-reach excavator, a front end loader, a water tank, and two fuel cubes staged on the property located at 1300 Curlew Avenue, Naples, FL, 34102.
- Contractor used support boat to install turbidity curtain across the mouth of Canal BB-BB.
- Contractor used 323 excavator to remove 5 hoppers of material between stations 8+00 and 9+50.
- Contractor used push boat to position barge as necessary for removing material.
- Contractor used push boat to transport hopper from canal BB-BB to Canal CC-CC station 1+50.
- Contractor used support boat to remove and install turbidity curtain as necessary to allow push boat in and out of the canal to transport hopper.
- Contractor used 326 excavator to transfer 5 hoppers of material from hopper to dewatering site at 1300 Curlew Avenue and to redistribute the removed material.

Contractor(s) and Personnel										
#	Name	Type	#	Hrs.	Type	#	Hrs.	Type	#	Hrs.
1	Prime: <b>Quality Enterprises</b>	PM	0	0	Boat Captain	1	9	Mechanic	0	0
		Excavator Operator	2	9	Truck Driver	0	0	Assistant	1	9
		Technician	0	0	Superintendent	1	1	VP	0	0

Equipment					
Cont/ Sub #	Equipment ID	Description	# Pieces	# Used	Total Hours Used
1	N/A	Barge	1	1	9
1	CAT 323	Excavator	1	1	9
1	CAT 326	Excavator	1	1	6
1	02016	Front End Loader	1	0	0
1	FL6223TB	Push Boat	1	1	9
1	FL2474PP	Support Boat	1	1	6
1	N3758Z	Fuel Truck	0	0	0
1	P9457E	Water Truck	0	0	0
1	725RZM	Water Tank	0	0	0
1	Z67EAZ	Small Dump truck	0	0	0
1	PB727E	Dump truck	0	0	0
1	MB28DQ	Dump truck	0	0	0
1	MB26DQ	Utility Truck	0	0	0
1	DRHS18	Utility Truck	0	0	0
1	N9524Z	Transport Truck	0	0	0

Visitors			
Name	Company	Hours at Job Site	
		From:	To:

Inspector Name and Position	Hours at Job Site/Office		Total Hours
Sam Boyd, EIT	From: 8:30 AM	To: 4:30 PM	8.0



☉ 317°NW (T) ☉ 26°8'7"N, 81°47'16"W ±13ft ▲ 10ft



22 Mar 2022, 08:54:25

Support boat holding open curtain to allow push boat to exit Canal BB-BB and transport hopper to Canal CC-CC



SE S SW  
120 150 180 210 240

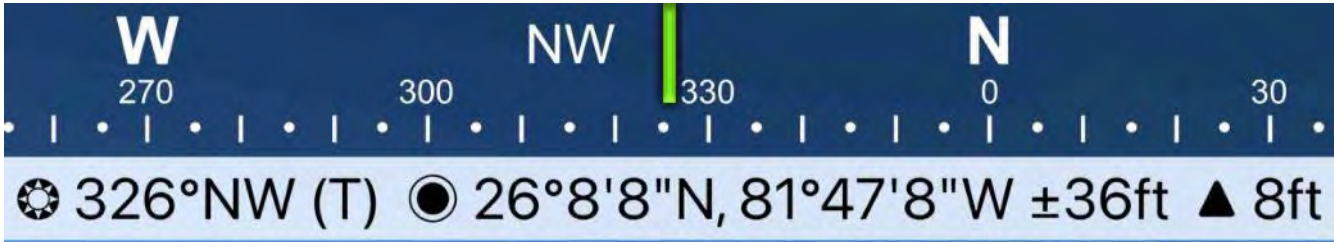
☀ 184°S (T) ☉ 26°8'14"N, 81°47'15"W ±26ft ▲ 8ft



22 Mar 2022, 08:59:53

326 excavator transferring material from hopper to dewatering site at 1300 Curlew Avenue





323 excavator lifting spud to allow push boat to mobilize barge at station 9+50 in Canal CC-CC



W 270 NW 300 330 N 0 NE 30  
337°NW (T) 26°8'9"N, 81°47'8"W ±82ft ▲ 8ft



323 excavator removing material from station 9+50 and transferring to hopper





☀ 320°NW (T) ☉ 26°8'8"N, 81°47'7"W ±19ft ▲ 8ft



22 Mar 2022, 11:30:06

323 excavator removing material from station 9+00 and transferring to hopper



S 180 SW 210 240 W 270 300  
☀ 236°SW (T) ● 26°8'13"N, 81°47'15"W ±13ft ▲ 12ft



326 excavator transferring material from hopper to dewatering site at 1300 Curlew Avenue





☀ 359°N (T) ☉ 26°8'8"N, 81°47'8"W ±13ft ▲ 9ft



323 excavator removing material from station 8+50 and transferring to hopper





☉ 168°S (T) ☉ 26°8'14"N, 81°47'15"W ±13ft ▲ 9ft



22 Mar 2022 16:13:29

**326 excavator transferring material from hopper to dewatering site at 1300 Curlew Avenue**





**DAILY REPORT OF CONSTRUCTION**  
 21-036 EAST NAPLES BAY  
 DREDGING AND ROCK REMOVAL PROJECT



Date: <b>03/23/2022</b>			
Inspectors: <b>SB</b>	Stantec PIN: <b>2028113191</b>	Accidents <input type="checkbox"/> Yes <input checked="" type="checkbox"/> No	
Day of Week: <b>Wednesday</b>	Contract Day: <b>157/365</b>	Week: <b>23</b>	Accident Report #: <b>N/A</b>
High Temp (°F): <b>88°F</b>	AM Conditions: <b>Sunny</b>	PM Conditions: <b>Sunny</b>	High Tide: <b>4:22 PM +2.6'</b>
Low Temp (°F): <b>70°F</b>	Wind: <b>7 mph</b>	Wind: <b>13 mph</b>	Low Tide: <b>10:55 AM +1.2'</b>
Canal Worked In: <b>BB-BB</b>	Stations Worked Between:	<b>6+50 to 8+50</b>	

<b>General</b>
<p><b>#1 – Prime Contractor – Quality Enterprises:</b></p> <ul style="list-style-type: none"> <li>• Contractor has an excavator mounted on a barge and a hopper staged in Canal BB-BB at station 8+00. Contractor also has a push boat, a support boat, and another hopper staged in Canal CC-CC at station 2+00. In addition, Contractor has a long-reach excavator, a front end loader, a water tank, and two fuel cubes staged on the property located at 1300 Curlew Avenue, Naples, FL, 34102.</li> <li>• Contractor attached tires to the new hopper.</li> <li>• Mechanic came to site at 1300 Curlew Avenue to take one of the manhole covers from the old hopper.</li> <li>• Contractor used support boat to install turbidity curtain across the mouth of Canal BB-BB.</li> <li>• Contractor used 323 excavator to remove 6 hoppers of material between stations 6+50 and 8+50.</li> <li>• Contractor used push boat to position barge as necessary for removing material.</li> <li>• Contractor used push boat to transport hopper from canal BB-BB to Canal CC-CC station 1+50 and back again.</li> <li>• Contractor used support boat to remove and install turbidity curtain as necessary to allow push boat in and out of the canal to transport hoppers.</li> <li>• Contractor used 326 excavator to transfer 6 hoppers of material from hopper to dewatering site at 1300 Curlew Avenue and to redistribute the removed material.</li> </ul>

Contractor(s) and Personnel										
#	Name	Type	#	Hrs.	Type	#	Hrs.	Type	#	Hrs.
1	Prime: <b>Quality Enterprises</b>	PM	0	0	Boat Captain	1	9	Mechanic	0	0
		Excavator Operator	2	9	Truck Driver	1	1	Assistant	1	9
		Technician	0	0	Superintendent	1	0.5	VP	0	0

Equipment					
Cont/ Sub #	Equipment ID	Description	# Pieces	# Used	Total Hours Used
1	N/A	Barge	1	1	9
1	CAT 323	Excavator	1	1	9
1	CAT 326	Excavator	1	1	6
1	02016	Front End Loader	1	0	0
1	FL6223TB	Push Boat	1	1	9
1	FL2474PP	Support Boat	1	1	7
1	N3758Z	Fuel Truck	0	0	0
1	P9457E	Water Truck	0	0	0
1	725RZM	Water Tank	0	0	0
1	Z67EAZ	Small Dump truck	0	0	0
1	PB727E	Dump truck	0	0	0
1	MB28DQ	Dump truck	0	0	0
1	MB26DQ	Utility Truck	0	0	0
1	DRHS18	Utility Truck	0	0	0
1	N9524Z	Transport Truck	0	0	0

Visitors			
Name	Company	Hours at Job Site	
		From:	To:

Inspector Name and Position	Hours at Job Site/Office		Total Hours
Sam Boyd, EIT	From: 8:45 AM	To: 4:45 PM	8.0



NE 60 90 120 150 180  
110°E (T) 26°8'14"N, 81°47'15"W ±13ft ▲ 20ft



Removed material at the dewatering site at 1300 Curlew Avenue





New hopper with tires attached tied to barrier elements at station 1+50 in Canal CC-CC



NW N NE  
300 330 0 30 6  
☀ 349°N (T) ☉ 26°8'8"N, 81°47'9"W ±13ft ▲ 8ft



23 Mar 2022, 09:32:48

323 excavator removing material from station 8+50 and transferring to hopper





☀ 309°NW (T) ☉ 26°8'7"N, 81°47'16"W ±13ft ▲ 8ft



23 Mar 2022, 09:53:46

Support boat holding open curtain to allow push boat to exit Canal BB-BB and transport hopper to Canal CC-CC



SW 210 240 270 300 330 NW

☉ 261°W (T) ☉ 26°8'13"N, 81°47'15"W ±39ft ▲ 8ft



326 excavator holding old hopper in place while push boat transports new hopper to Barge in Canal BB-BB





☀ 236°SW (T)    ● 26°8'14"N, 81°47'15"W ±16ft    ▲ 8ft



23 Mar 2022, 10:12:34

**326 excavator transferring material from hopper to dewatering site at 1300 Curlew Avenue**



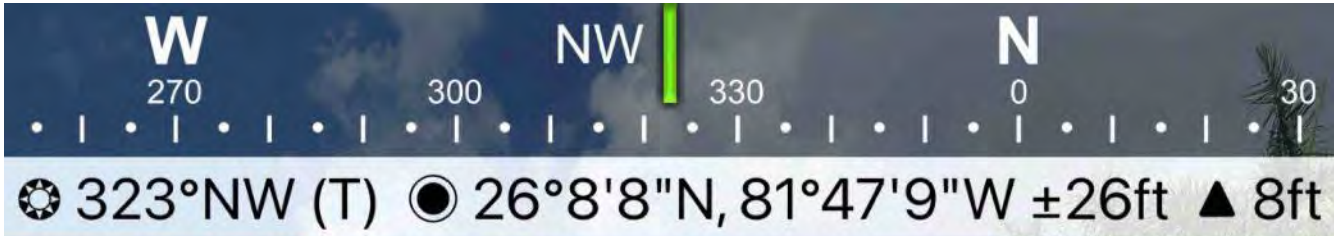


☀ 103°E (T) ● 26°8'13"N, 81°47'16"W ±19ft ▲ 9ft



326 excavator transferring material from hopper to dewatering site at 1300 Curlew Avenue





323 excavator removing material from station 7+50 and transferring to hopper





☉ 95°E (T) ☉ 26°8'13"N, 81°47'16"W ±13ft ▲ 9ft



326 excavator transferring material from hopper to dewatering site at 1300 Curlew Avenue



SW 240 W 270 NW 330 N 0

☉ 294°NW (T) ● 26°8'9"N, 81°47'10"W ±26ft ▲ 8ft



23 Mar 2022, 15:16:53

323 excavator removing material from station 7+00 and transferring to hopper





**DAILY REPORT OF CONSTRUCTION**  
 21-036 EAST NAPLES BAY  
 DREDGING AND ROCK REMOVAL PROJECT



Date: <b>03/24/2022</b>			
Inspectors: <b>SB</b>	Stantec PIN: <b>2028113191</b>		Accidents <input type="checkbox"/> Yes <input checked="" type="checkbox"/> No
Day of Week: <b>Thursday</b>	Contract Day: <b>158/365</b>	Week: <b>23</b>	Accident Report #: <b>N/A</b>
High Temp (°F): <b>84°F</b>	AM Conditions: <b>Cloudy</b>	PM Conditions: <b>Sunny</b>	High Tide: <b>5:14 PM +2.5'</b>
Low Temp (°F): <b>71°F</b>	Wind: <b>9 mph</b>	Wind: <b>16 mph</b>	Low Tide: <b>11:11 AM +1.4'</b>
Canal Worked In: <b>BB-BB</b>	Stations Worked Between:	<b>5+50 to 6+50</b>	

<b>General</b>
<p><b>#1 – Prime Contractor – Quality Enterprises:</b></p> <ul style="list-style-type: none"> <li>• Contractor has an excavator mounted on a barge and a hopper staged in Canal BB-BB at station 6+50. Contractor also has a push boat, a support boat, and another hopper staged in Canal CC-CC at station 2+00. In addition, Contractor has a long-reach excavator, a front end loader, a water tank, and two fuel cubes staged on the property located at 1300 Curlew Avenue, Naples, FL, 34102.</li> <li>• Contractor used 326 excavator to transport fuel cube to push boat. Push boat transported fuel cube to Canal BB-BB station 6+50 where it was used to refuel 323 excavator. Push boat transported fuel cube back to Canal CC-CC and 326 excavator was used to transport fuel cube back to southwest corner of 1300 Curlew Avenue.</li> <li>• Contractor used support boat to install turbidity curtain across the mouth of Canal BB-BB.</li> <li>• Contractor used 323 excavator to remove 5 hoppers of material between stations 5+50 and 6+50.</li> <li>• Contractor used push boat to position barge as necessary for removing material.</li> <li>• Contractor used push boat to transport hopper from canal BB-BB to Canal CC-CC station 1+50 and back again.</li> <li>• Contractor used support boat to remove and install turbidity curtain as necessary to allow push boat in and out of the canal to transport hoppers.</li> <li>• Contractor used 326 excavator to transfer 5 hoppers of material from hopper to dewatering site at 1300 Curlew Avenue and to redistribute the removed material.</li> </ul>



Contractor(s) and Personnel										
#	Name	Type	#	Hrs.	Type	#	Hrs.	Type	#	Hrs.
1	Prime: <b>Quality Enterprises</b>	PM	0	0	Boat Captain	1	9	Mechanic	0	0
		Excavator Operator	2	9	Truck Driver	0	0	Assistant	1	9
		Technician	0	0	Superintendent	0	0	VP	0	0

Equipment					
Cont/ Sub #	Equipment ID	Description	# Pieces	# Used	Total Hours Used
1	N/A	Barge	1	1	9
1	CAT 323	Excavator	1	1	9
1	CAT 326	Excavator	1	1	6
1	02016	Front End Loader	1	0	0
1	FL6223TB	Push Boat	1	1	9
1	FL2474PP	Support Boat	1	1	7
1	N3758Z	Fuel Truck	0	0	0
1	P9457E	Water Truck	0	0	0
1	725RZM	Water Tank	0	0	0
1	Z67EAZ	Small Dump truck	0	0	0
1	PB727E	Dump truck	0	0	0
1	MB28DQ	Dump truck	0	0	0
1	MB26DQ	Utility Truck	0	0	0
1	DRHS18	Utility Truck	0	0	0
1	N9524Z	Transport Truck	0	0	0

Visitors			
Name	Company	Hours at Job Site	
		From:	To:

Inspector Name and Position	Hours at Job Site/Office		Total Hours
Sam Boyd, EIT	From: 8:15 AM	To: 5:15 PM	9.0





☉ 181°S (T) ☉ 26°8'15"N, 81°47'15"W ±9ft ▲ 8ft



24 Mar 2022, 08:13:23

Removed material at the dewatering site at 1300 Curlew Avenue





☉ 360°N (T) ● 26°8'9"N, 81°47'10"W ±55ft ▲ 8ft



24 Mar 2022, 08:22:56

Refueling 323 excavator with small fuel cube at station 6+50





☀ 337°NW (T) ● 26°8'8"N, 81°47'10"W ±29ft ▲ 8ft



24 Mar 2022, 08:29:29

323 excavator removing material from station 6+50 and transferring to hopper



SW W NW  
210 240 270 300

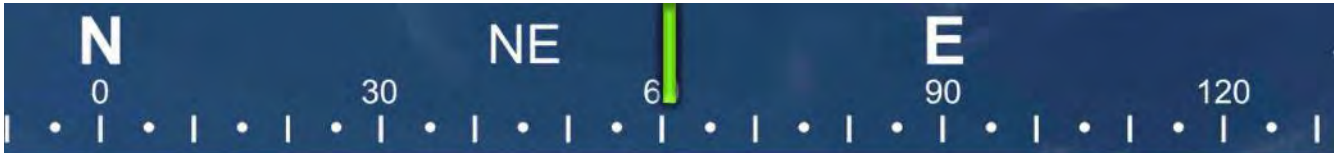
☉ 256°W (T) ☉ 26°8'13"N, 81°47'15"W ±29ft ▲ 9ft



24 Mar 2022 14:06:21

326 excavator transferring material from hopper to dewatering site at 1300 Curlew Avenue





☀ 61°NE (T) ● 26°8'9"N, 81°47'12"W ±22ft ▲ 8ft



323 excavator removing material from station 6+00 and transferring to hopper





☀ 73°E (T) ☉ 26°8'8"N, 81°47'12"W ±26ft ▲ 8ft



24 Mar 2022, 14:38:26

323 excavator lifting spud to allow push boat to mobilize barge at station 5+50 in Canal CC-CC



NE 60 E 90 SE 120 150  
☀ 105°E (T) ☉ 26°8'13"N, 81°47'16"W ±29ft ▲ 8ft



Push boat transporting full hopper back to Canal CC-CC station 1+50 and picking up empty hopper



NW N NE E  
330 0 30 60 90

☀ 24°NE (T) ● 26°8'9"N, 81°47'12"W ±13ft ▲ 10ft



323 excavator on barge with Epiroc grinder at station 5+50





**DAILY REPORT OF CONSTRUCTION**  
 21-036 EAST NAPLES BAY  
 DREDGING AND ROCK REMOVAL PROJECT



Date: <b>03/25/2022</b>			
Inspectors: <b>SB</b>	Stantec PIN: <b>2028113191</b>		Accidents <input type="checkbox"/> Yes <input checked="" type="checkbox"/> No
Day of Week: <b>Friday</b>	Contract Day: <b>159/365</b>	Week: <b>23</b>	Accident Report #: <b>N/A</b>
High Temp (°F): <b>78°F</b>	AM Conditions: <b>Cloudy</b>	PM Conditions: <b>Sunny</b>	High Tide: <b>12:06 PM +1.7'</b>
Low Temp (°F): <b>66°F</b>	Wind: <b>8 mph</b>	Wind: <b>17 mph</b>	Low Tide: <b>1:50 PM +1.6'</b>
Canal Worked In: <b>BB-BB</b>	Stations Worked Between:	<b>4+50 to 5+50</b>	

<b>General</b>
<p><b>#1 – Prime Contractor – Quality Enterprises:</b></p> <ul style="list-style-type: none"> <li>• Contractor has an excavator mounted on a barge and a hopper staged in Canal BB-BB at station 5+50. Contractor also has a push boat, a support boat, and another hopper staged in Canal CC-CC at station 2+00. In addition, Contractor has a long-reach excavator, a front end loader, a water tank, and two fuel cubes staged on the property located at 1300 Curlew Avenue, Naples, FL, 34102.</li> <li>• Contractor used support boat to install turbidity curtain across the mouth of Canal BB-BB.</li> <li>• Contractor used 323 excavator to grind rock between stations 5+00 and 5+50.</li> <li>• Contractor used 323 excavator to remove 3.5 hoppers of material between stations 4+50 and 5+50.</li> <li>• Contractor used push boat to position barge as necessary for grinding and removing material.</li> <li>• Contractor used push boat to transport hopper from canal BB-BB to Canal CC-CC station 1+50 and back again.</li> <li>• Contractor used support boat to remove and install turbidity curtain as necessary to allow push boat in and out of the canal to transport hoppers.</li> <li>• Contractor used 326 excavator to transfer 3.5 hoppers of material from hopper to dewatering site at 1300 Curlew Avenue and to redistribute the removed material.</li> <li>• Contractor used push boat to transport barge and 323 excavator from Canal BB-BB to Canal CC-CC station 2+00.</li> <li>• Contractor used water tank to clean equipment.</li> </ul>



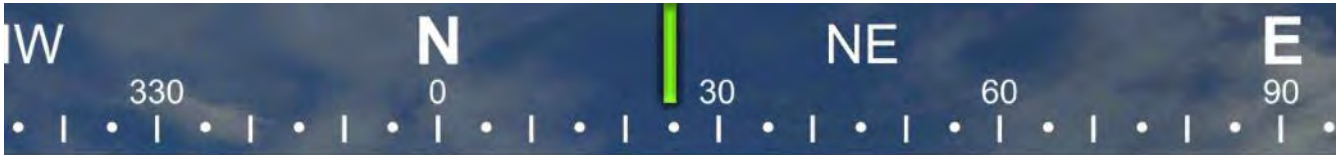
Contractor(s) and Personnel										
#	Name	Type	#	Hrs.	Type	#	Hrs.	Type	#	Hrs.
1	Prime: <b>Quality Enterprises</b>	PM	0	0	Boat Captain	1	9	Mechanic	0	0
		Excavator Operator	2	9	Truck Driver	0	0	Assistant	1	9
		Technician	0	0	Superintendent	1	2	VP	0	0

Equipment					
Cont/ Sub #	Equipment ID	Description	# Pieces	# Used	Total Hours Used
1	N/A	Barge	1	1	9
1	CAT 323	Excavator	1	1	9
1	CAT 326	Excavator	1	1	6
1	02016	Front End Loader	1	0	0
1	FL6223TB	Push Boat	1	1	9
1	FL2474PP	Support Boat	1	1	7
1	N3758Z	Fuel Truck	0	0	0
1	P9457E	Water Truck	0	0	0
1	725RZM	Water Tank	1	1	1
1	Z67EAZ	Small Dump truck	0	0	0
1	PB727E	Dump truck	0	0	0
1	MB28DQ	Dump truck	0	0	0
1	MB26DQ	Utility Truck	0	0	0
1	DRHS18	Utility Truck	0	0	0
1	N9524Z	Transport Truck	0	0	0

Visitors			
Name	Company	Hours at Job Site	
		From:	To:

Inspector Name and Position	Hours at Job Site/Office		Total Hours
Sam Boyd, EIT	From: 8:30 AM	To: 4:30 PM	8.0





☀ 25°NE (T) ● 26°8'8"N, 81°47'12"W ±16ft ▲ 9ft



25 Mar 2022, 08:34:04

323 excavator grinding rock at station 5+50



N 0 30 60 90 120 SE

☀ 68°E (T) ☉ 26°8'8"N, 81°47'12"W ±52ft ▲ 8ft



323 excavator lifting spud to allow push boat to mobilize barge at station 5+50 in Canal CC-CC



NW N NE  
300 330 0 30 60

☀ 355°N (T) ☉ 26°8'8"N, 81°47'12"W ±13ft ▲ 10ft



25 Mar 2022, 09:47:17

323 excavator removing material from station 5+50 and transferring to hopper





☉ 294°NW (T) ● 26°8'8"N, 81°47'15"W ±22ft ▲ 8ft



25 Mar 2022, 09:49:37

Turbidity curtain across the mouth of Canal BB-BB





326 excavator transferring material from hopper to dewatering site at 1300 Curlew Avenue





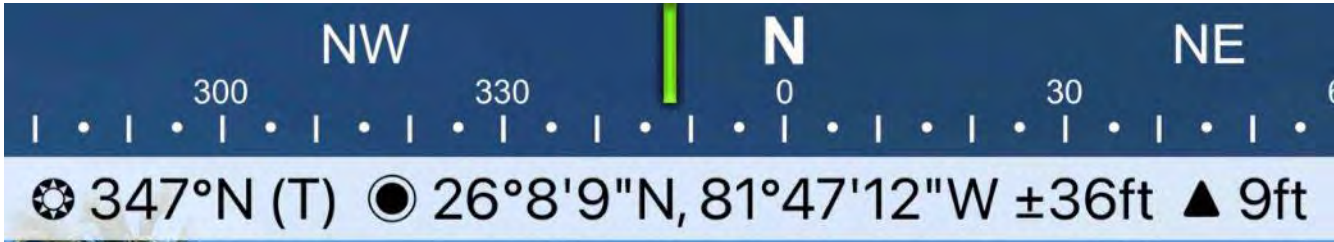
☀ 120°SE (T) ● 26°8'13"N, 81°47'16"W ±19ft ▲ 5ft



25 Mar 2022, 11:30:43

Push boat dropping off hopper full of material and picking up empty hopper at station 1+50 in Canal CC-CC





25 Mar 2022, 14:00:48

323 excavator removing material from station 4+50 and transferring to hopper



E 90 SE 120 150 S 180  
☀ 133°SE (T) ● 26°8'13"N, 81°47'16"W ±13ft ▲ 9ft



323 excavator, barge, and two hoppers tied up in Canal CC-CC at station 1+00