



# WEEKLY SUMMARY REPORT – CONTRACT WEEK 23

21-036 EAST NAPLES BAY

## DREDGING AND ROCK REMOVAL PROJECT



Date: <b>2/26/2024 to 3/1/2024</b>			
Inspectors: <b>Mackenzie Hudson</b>	Stantec PIN: <b>2028113191</b>		Accidents <input type="checkbox"/> Yes <input checked="" type="checkbox"/> No
Days of Week: <b>Monday to Friday</b>	Contract Days: <b>155 to 159</b>	Total Days: <b>159</b>	Accident Report #: <b>N/A</b>
Canal(s) Worked In: <b>A-A</b>		Stations Worked Between: <b>12+75 to 10+00</b>	

### General

#### Remarks

#### #1 – Prime Contractor – Quality Enterprises:

##### Monday 2-26-2024:

- Turbidity curtain noted in place at station 6+00 in Canal A-A at 10:00am.
- Canal sediment removal in progress today (Canal A-A) starting at approximately station 12+75 and moving towards station 11+25 in the southwest direction. Sediment removal only, no grinding.
- Contractor dredged from 8:00am to 8:20am. Contractor transported hopper to staging area at 1300 Curlew Avenue from 8:25am to 9:10am. Contractor used long reach excavator to unload material from hopper onto staging area from 9:20am to 9:45am while the push boat transported the other hopper to Canal A-A.
- Contractor resumed dredging from 10:00am to 10:20am. Contractor transported hopper to staging area at 1300 Curlew Avenue from 10:35am to 11:15am. Contractor used long reach excavator to unload material from hopper onto staging area from 11:20am to 11:45am while the push boat transported other hopper to Canal A-A.
- Contractor left site and returned to resume dredging from 1:15pm to 1:30pm. Contractor transported hopper to staging area at 1300 Curlew Avenue from 1:35pm to 2:20pm. Contractor used long reach excavator to unload material from hopper onto staging area from 2:25pm to 2:45pm while the push boat transported other hopper to Canal A-A.
- Contractor resumed dredging from 3:00pm to 3:30pm. Contractor transported hopper to staging area at 1300 Curlew Avenue from 3:40pm to 4:25pm. Contractor used long reach excavator to unload material from hopper onto staging area from 4:30pm to 4:50pm while the push boat transported other hopper to Canal A-A.
- Contractor has a barge, an excavator, two (2) hoppers, a support boat, and a push boat staged overnight at Canal CC-CC between stations 1+00 and 2+00. In addition, the contractor has a long reach excavator, Conex box, two (2) fuel cubes, and a water tank on trailer staged on the property located at 1300 Curlew Avenue, Naples, FL 34102. A GPS base station is also set up at this location during project work hours today.
- Four (4) hoppers of material removed.

##### Tuesday 2-27-2024:

- Mechanic arrived on site at 9:10am to perform a scheduled service appointment on the 323 excavator. The service appointment was completed at 11:30am and the mechanic left site.
- Turbidity curtain noted in place at station 6+00 in Canal A-A at 1:15pm.



# WEEKLY SUMMARY REPORT – CONTRACT WEEK 23

21-036 EAST NAPLES BAY

## DREDGING AND ROCK REMOVAL PROJECT



- Canal sediment removal in progress today (Canal A-A) starting at approximately station 11+00. Sediment removal only, no grinding.
- Contractor dredged from 1:05pm to 1:20pm. Contractor transported hopper to staging area at 1300 Curlew Avenue from 1:25pm to 2:00pm. Contractor used long reach excavator to unload material from hopper onto staging area from 2:05pm to 2:35pm while the push boat transported the other hopper to Canal A-A.
- Contractor resumed dredging from 2:45pm to 3:00pm. Contractor transported hopper to staging area at 1300 Curlew Avenue from 3:05pm to 3:45pm. Contractor used long reach excavator to unload material from hopper onto staging area from 3:50pm to 4:10pm while the push boat transported other hopper to Canal A-A.
- Contractor dropped the turbidity curtain and opened the canal at 4:35pm.
- Contractor has a barge, an excavator, one hopper, a support boat, and a push boat staged overnight at station 6+00 in Canal A-A while working on this canal. Contractor also has one hopper staged in Canal CC-CC between stations 1+00 and 2+00. In addition, the contractor has a long reach excavator, Conex box, two (2) fuel cubes, and a water tank on trailer staged on the property located at 1300 Curlew Avenue, Naples, FL 34102. A GPS base station is also set up at this location during project work hours today.
- Two (2) hoppers of material removed.

### Wednesday 2-28-2024:

- Turbidity curtain noted in place at station 6+00 in Canal A-A at 8:10am.
- Canal sediment removal in progress today (Canal A-A) starting at approximately station 11+00 and moving towards station 10+50 in the southwest direction. Sediment removal only, no grinding.
- Contractor dredged from 8:10am to 8:25am. Operator noticed issues with GPS system in the excavator and called for mechanic to address the issue.
- Mechanic arrived on site at 12:35pm and left at 3:45pm.
- Contractor resumed dredging from 3:35pm to 3:50pm. Contractor transported hopper to staging area at 1300 Curlew Avenue from 3:55pm to 4:40pm. Contractor used long reach excavator to unload material from hopper onto staging area from 4:45pm to 5:00pm while the push boat transported the other hopper to Canal A-A.
- Contractor has a barge, an excavator, one hopper, a support boat, and a push boat staged overnight at station 6+00 in Canal A-A. Contractor also has one hopper between stations 1+00 and 2+00 in Canal CC-CC. In addition, the contractor has a long reach excavator, Conex box, two (2) fuel cubes, and a water tank on trailer staged on the property located at 1300 Curlew Avenue, Naples, FL 34102. A GPS base station is also set up at this location during project work hours today.
- One (1) hopper of material removed.

### Thursday 2-29-2024:

- Turbidity curtain noted in place at station 6+00 in Canal A-A at 8:00am.
- Canal sediment removal in progress today (Canal A-A) starting at approximately station 10+25. Sediment removal only, no grinding.



## WEEKLY SUMMARY REPORT – CONTRACT WEEK 23

21-036 EAST NAPLES BAY

### DREDGING AND ROCK REMOVAL PROJECT



- Contractor dredged from 8:00am to 8:15am. Contractor transported hopper to staging area at 1300 Curlew Avenue from 8:20am to 9:20am. Contractor used long reach excavator to unload material from hopper onto staging area from 9:30am to 9:50am while the push boat transported the other hopper to Canal A-A.
- Contractor resumed dredging from 10:25am to 11:00am. Contractor transported hopper to staging area at 1300 Curlew Avenue from 11:05am to 11:50am. Contractor used long reach excavator to unload material from hopper onto staging area from 11:55am to 12:15pm while the push boat transported the other hopper to Canal A-A.
- Contractor resumed dredging from 1:10pm to 1:30pm. Contractor transported hopper to staging area at 1300 Curlew Avenue from 1:35pm to 2:20pm. Contractor used long reach excavator to unload material from hopper onto staging area from 2:25pm to 2:45pm while the push boat transported the other hopper to Canal A-A.
- Contractor resumed dredging from 3:05pm to 3:40pm. Contractor transported hopper to staging area at 1300 Curlew Avenue from 3:50pm to 4:30pm. Contractor used long reach excavator to unload material from hopper onto staging area from 4:35pm to 5:00pm while the push boat transported the other hopper to Canal A-A.
- Contractor has a barge, an excavator, one hopper, a support boat, and a push boat staged overnight at station 6+00 in Canal A-A. Contractor also has one hopper between stations 1+00 and 2+00 in Canal CC-CC. In addition, the contractor has a long reach excavator, Conex box, two (2) fuel cubes, and a water tank on trailer staged on the property located at 1300 Curlew Avenue, Naples, FL 34102. A GPS base station is also set up at this location during project work hours today.
- Four (4) hoppers of material removed.

#### Friday 3-1-2024:

- Turbidity curtain noted in place at station 6+00 in Canal A-A at 8:00am.
- Canal sediment removal in progress today (Canal A-A) starting at approximately station 10+00. Sediment removal only, no grinding.
- Contractor dredged from 8:00am to 8:15am. Contractor transported hopper to staging area at 1300 Curlew Avenue from 8:20am to 9:05am. Contractor used long reach excavator to unload material from hopper onto staging area from 9:10am to 9:25am while the push boat transported the other hopper to Canal A-A.
- Contractor resumed dredging from 9:45am to 10:00am. Contractor transported hopper to staging area at 1300 Curlew Avenue from 10:05am to 10:45am. Contractor used long reach excavator to unload material from hopper onto staging area from 10:50am to 11:05am while the push boat transported the other hopper to Canal A-A.
- Mechanic arrived on site at 11:45am to look at the GPS sensor system on the 323 excavator. Mechanic left site at 1:10pm.
- Contractor resumed dredging from 1:05pm to 1:30pm. Contractor transported hopper to staging area at 1300 Curlew Avenue from 1:35pm to 2:35pm. Contractor used long reach excavator to unload material from hopper onto staging area from 2:40pm to 3:00pm while the push boat transported the other hopper to Canal A-A.



- Contractor has a barge, an excavator, one hopper, a support boat, and a push boat staged overnight at station 4+00 in Canal Main B1. Contractor also has one hopper between stations 1+00 and 2+00 in Canal CC-CC. In addition, the contractor has a long reach excavator, Conex box, two (2) fuel cubes, and a water tank on trailer staged on the property located at 1300 Curlew Avenue, Naples, FL 34102. A GPS base station is also set up at this location during project work hours today.
- Three (3) hoppers of material removed.

**Note: Daily reports for the week attached.**





**DAILY REPORT OF CONSTRUCTION**  
 21-036 EAST NAPLES BAY  
 DREDGING AND ROCK REMOVAL PROJECT



Date: <b>2/26/2024</b>			
Inspector: <b>Mackenzie Hudson</b>	Stantec PIN: <b>2028113191</b>		Accidents <input type="checkbox"/> Yes <input checked="" type="checkbox"/> No
Day of Week: <b>Monday</b>	Contract Day: <b>155</b>	Week: <b>23</b>	Accident Report #: <b>N/A</b>
High Temp (°F): <b>74 °F</b>	AM Conditions: <b>Sunny</b>	PM Conditions: <b>Sunny</b>	High Tide: <b>2:08 PM – 2.3'</b>
Low Temp (°F): <b>51 °F</b>	Wind: <b>6 to 8 mph</b>	Wind: <b>7 to 9 mph</b>	Low Tide: <b>8:19 AM – 0.0'</b>
Canal Worked In: <b>A-A</b>	Stations Worked Between:	<b>12+75 to 11+25</b>	

**General**

#1 – Prime Contractor – Quality Enterprises:

- Turbidity curtain noted in place at station 6+00 in Canal A-A at 10:00am.
- Canal sediment removal in progress today (Canal A-A) starting at approximately station 12+75 and moving towards station 11+25 in the southwest direction. Sediment removal only, no grinding.
- Contractor dredged from 8:00am to 8:20am. Contractor transported hopper to staging area at 1300 Curlew Avenue from 8:25am to 9:10am. Contractor used long reach excavator to unload material from hopper onto staging area from 9:20am to 9:45am while the push boat transported the other hopper to Canal A-A.
- Contractor resumed dredging from 10:00am to 10:20am. Contractor transported hopper to staging area at 1300 Curlew Avenue from 10:35am to 11:15am. Contractor used long reach excavator to unload material from hopper onto staging area from 11:20am to 11:45am while the push boat transported other hopper to Canal A-A.
- Contractor left site and returned to resume dredging from 1:15pm to 1:30pm. Contractor transported hopper to staging area at 1300 Curlew Avenue from 1:35pm to 2:20pm. Contractor used long reach excavator to unload material from hopper onto staging area from 2:25pm to 2:45pm while the push boat transported other hopper to Canal A-A.
- Contractor resumed dredging from 3:00pm to 3:30pm. Contractor transported hopper to staging area at 1300 Curlew Avenue from 3:40pm to 4:25pm. Contractor used long reach excavator to unload material from hopper onto staging area from 4:30pm to 4:50pm while the push boat transported other hopper to Canal A-A.
- Contractor has a barge, an excavator, two (2) hoppers, a support boat, and a push boat staged overnight at Canal CC-CC between stations 1+00 and 2+00. In addition, the contractor has a long reach excavator, Conex box, two (2) fuel cubes, and a water tank on trailer staged on the property located at 1300 Curlew Avenue, Naples, FL 34102. A GPS base station is also set up at this location during project work hours today.
- Four (4) hoppers of material removed.

<b>Contractor(s) and Personnel</b>										
#	Name	Type	#	Hrs.	Type	#	Hrs.	Type	#	Hrs.
1	Prime: <b>Quality Enterprises</b>	PM	0	0	Field Supervisor	0	0	Foreman	0	0
		Skilled Laborer	2	10	Unskilled Laborer	1	10	Safety Director	0	0

<b>Equipment</b>					
Cont/ Sub #	Equipment ID	Description	# Pieces	# Used	Total Hours Used
1	N/A	Barge	1	1	8
1	CAT 323	Excavator - Barge	1	1	6
1	CAT 326	Excavator – Long Reach	1	1	4
1	FL6223TB	Push Boat	1	1	8
1	FL2474PP	Support Boat	1	1	4
1	N/A	Hopper	2	2	8

<b>Visitors</b>			
Name	Company	Hours at Job Site	
		From:	To:

Inspector Name and Position	Hours at Job Site/Office		Total Hours
Mackenzie Hudson, EIT – CEI	From: 8:00 AM	To: 5:00 PM	8.0 hours

SW W NW  
210 240 270 300 330

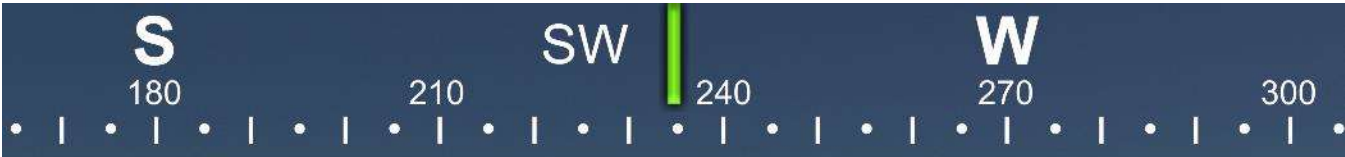
☉ 279°W (T) ☉ 26°7'24"N, 81°47'3"W ±13ft ▲ 10ft



26 Feb 2024, 08:04:13

323 excavator removing sediment at station 12+75 in Canal A-A.





☀ 235°SW (T) ● 26°8'13"N, 81°47'16"W ±13ft ▲ 12ft



26 Feb 2024, 09:19:04

Push boat taking hopper back to Canal A-A.





☉ 123°SE (T) ☉ 26°8'13"N, 81°47'16"W ±13ft ▲ 12ft



26 Feb 2024, 09:19:43

Long reach excavator removing sediment from hopper.





☀ 135°SE (T) ● 26°8'14"N, 81°47'16"W ±13ft ▲ 10ft



Long reach excavator spreading sediment onto staging area.



W 240 W 270 300 NW 330 N 0

☀ 297°NW (T) ☉ 26°7'24"N, 81°47'3"W ±13ft ▲ 10ft



26 Feb 2024, 10:03:19

323 excavator removing sediment at station 12+75 in Canal A-A.



SW W NW  
210 240 270 300 330  
☀ 277°W (T) ☉ 26°7'19"N, 81°47'6"W ±13ft ▲ -3ft



26 Feb 2024, 10:06:13

Turbidity curtain in place at station 6+00 in Canal A-A.





☉ 270°W (T) ☉ 26°7'24"N, 81°47'3"W ±13ft ▲ 8ft

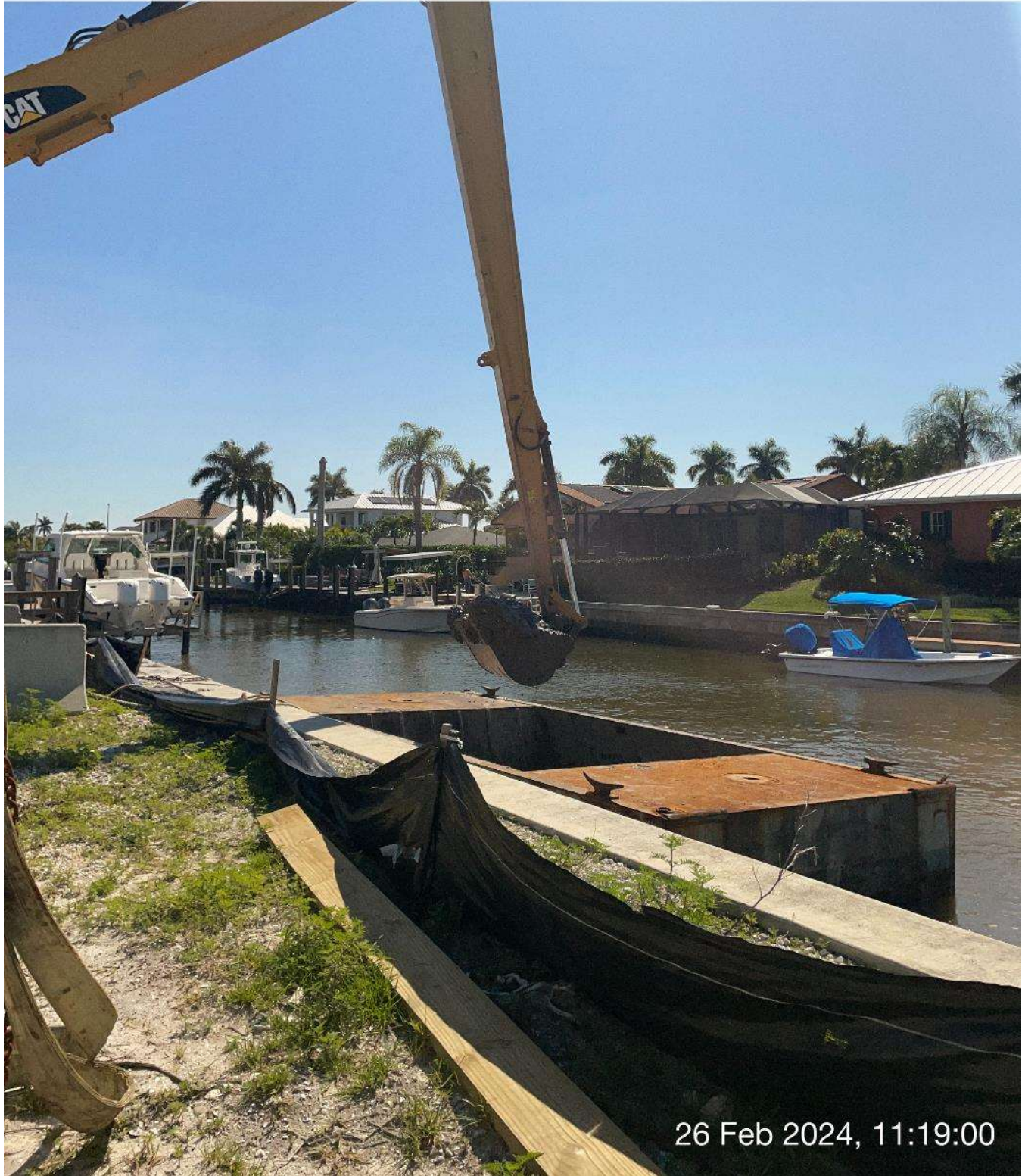


26 Feb 2024, 10:35:22

Push boat taking hopper to staging area.



E 90 120 SE 150 S 180  
● 124°SE (T) ● 26°8'13"N, 81°47'16"W ±13ft ▲ 8ft



26 Feb 2024, 11:19:00

Long reach excavator removing sediment from hopper.





☉ 254°W (T) ☉ 26°8'13"N, 81°47'16"W ±13ft ▲ 11ft



Push boat taking hopper back to Canal A-A.





☀ 139°SE (T) ● 26°8'14"N, 81°47'16"W ±13ft ▲ 11ft



Long reach excavator spreading sediment onto staging area.





☉ 257°W (T) ● 26°7'24"N, 81°47'3"W ±9ft ▲ 12ft



26 Feb 2024, 13:17:13

323 excavator removing sediment at station 11+25 in Canal A-A.



S 30 SW 210 240 W 270 NW 300

☀ 251°W (T) ● 26°7'19"N, 81°47'6"W ±13ft ▲ 13ft



Push boat taking hopper to staging area.





☀ 117°SE (T) ● 26°8'13"N, 81°47'16"W ±13ft ▲ 16ft



26 Feb 2024, 14:25:57

Long reach excavator removing sediment from hopper.





☉ 131°SE (T) ☉ 26°8'14"N, 81°47'16"W ±13ft ▲ 11ft



Long reach excavator spreading sediment onto staging area.





☉ 235°SW (T) ● 26°8'14"N, 81°47'16"W ±13ft ▲ 14ft



26 Feb 2024, 14:27:28

Push boat taking hopper back to Canal A-A.





☉ 255°W (T) ● 26°7'24"N, 81°47'2"W ±13ft ▲ 8ft



323 excavator removing sediment at station 11+25 in Canal A-A



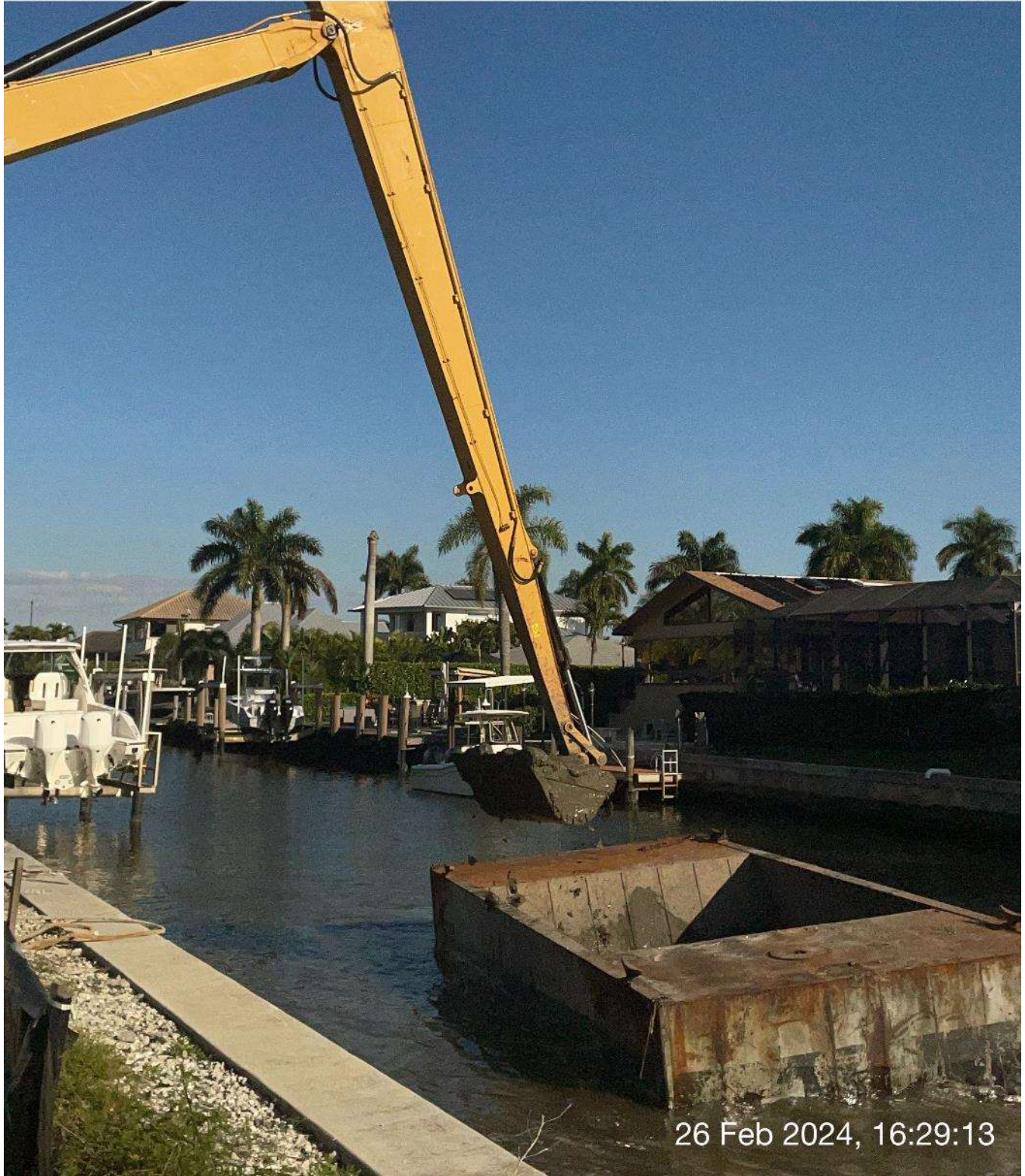
S 180      SW 210      W 270  
● 226°SW (T)   ● 26°7'19"N, 81°47'6"W ±13ft   ▲ 9ft



Push boat taking hopper and barge to staging area.



E SE S  
60 90 120 150 180  
☉ 122°SE (T) ☉ 26°8'13"N, 81°47'16"W ±13ft ▲ 9ft



Long reach excavator removing sediment from hopper.





☉ 138°SE (T) ☉ 26°8'14"N, 81°47'16"W ±13ft ▲ 0ft



Long reach excavator spreading sediment onto staging area.





☀ 146°SE (T) ● 26°8'13"N, 81°47'16"W ±9ft ▲ 5ft



Equipment staged at station 1+00 in Canal CC-CC.



**DAILY REPORT OF CONSTRUCTION**  
 21-036 EAST NAPLES BAY  
 DREDGING AND ROCK REMOVAL PROJECT



Date: <b>2/27/2024</b>			
Inspector: <b>Mackenzie Hudson</b>	Stantec PIN: <b>2028113191</b>	Accidents <input type="checkbox"/> Yes <input checked="" type="checkbox"/> No	
Day of Week: <b>Tuesday</b>	Contract Day: <b>156</b>	Week: <b>23</b>	Accident Report #: <b>N/A</b>
High Temp (°F): <b>77 °F</b>	AM Conditions: <b>Sunny</b>	PM Conditions: <b>Sunny</b>	High Tide: <b>2:30 PM – 2.3'</b>
Low Temp (°F): <b>53 °F</b>	Wind: <b>9 to 10 mph</b>	Wind: <b>12 to 13 mph</b>	Low Tide: <b>8:45 AM – 0.2'</b>
Canal Worked In: <b>A-A</b>	Stations Worked Between:	<b>11+00</b>	

**General**

#1 – Prime Contractor – Quality Enterprises:

- Mechanic arrived on site at 9:10am to perform a scheduled service appointment on the 323 excavator. The service appointment was completed at 11:30am and the mechanic left site.
- Turbidity curtain noted in place at station 6+00 in Canal A-A at 1:15pm.
- Canal sediment removal in progress today (Canal A-A) starting at approximately station 11+00. Sediment removal only, no grinding.
- Contractor dredged from 1:05pm to 1:20pm. Contractor transported hopper to staging area at 1300 Curlew Avenue from 1:25pm to 2:00pm. Contractor used long reach excavator to unload material from hopper onto staging area from 2:05pm to 2:35pm while the push boat transported the other hopper to Canal A-A.
- Contractor resumed dredging from 2:45pm to 3:00pm. Contractor transported hopper to staging area at 1300 Curlew Avenue from 3:05pm to 3:45pm. Contractor used long reach excavator to unload material from hopper onto staging area from 3:50pm to 4:10pm while the push boat transported other hopper to Canal A-A.
- Contractor dropped the turbidity curtain and opened the canal at 4:35pm.
- Contractor has a barge, an excavator, one hopper, a support boat, and a push boat staged overnight at station 6+00 in Canal A-A while working on this canal. Contractor also has one hopper staged in Canal CC-CC between stations 1+00 and 2+00. In addition, the contractor has a long reach excavator, Conex box, two (2) fuel cubes, and a water tank on trailer staged on the property located at 1300 Curlew Avenue, Naples, FL 34102. A GPS base station is also set up at this location during project work hours today.
- Two (2) hoppers of material removed.

<b>Contractor(s) and Personnel</b>										
#	Name	Type	#	Hrs.	Type	#	Hrs.	Type	#	Hrs.
1	Prime: <b>Quality Enterprises</b>	PM	0	0	Field Supervisor	0	0	Foreman	0	0
		Skilled Laborer	2	10	Unskilled Laborer	1	10	Safety Director	0	0

<b>Equipment</b>					
Cont/ Sub #	Equipment ID	Description	# Pieces	# Used	Total Hours Used
1	N/A	Barge	1	1	5
1	CAT 323	Excavator - Barge	1	1	3
1	CAT 326	Excavator – Long Reach	1	1	2
1	FL6223TB	Push Boat	1	1	5
1	FL2474PP	Support Boat	1	1	3
1	N/A	Hopper	2	2	5

<b>Visitors</b>			
Name	Company	Hours at Job Site	
		From:	To:

Inspector Name and Position	Hours at Job Site/Office		Total Hours
Mackenzie Hudson, EIT – CEI	From: 8:00 AM	To: 5:00 PM	8.0 hours





☀ 134°SE (T) ● 26°8'14"N, 81°47'16"W ±36ft ▲ 8ft



Mechanic arriving on site to service the 323 excavator.



SE S SW  
120 150 180 210 240  
☉ 176°S (T) ☉ 26°8'13"N, 81°47'16"W ±9ft ▲ 18ft



Mechanic servicing 323 excavator.



SE S SW  
120 150 180 210 240

☉ 173°S (T) ☉ 26°8'13"N, 81°47'16"W ±9ft ▲ 21ft



Mechanic servicing 323 excavator.





☉ 226°SW (T) ☉ 26°8'14"N, 81°47'16"W ±13ft ▲ 8ft



27 Feb 2024, 11:50:08

Push boat moving barge out of Canal CC-CC to transport to Canal A-A.



SE 150 S 180 210 SW 240 W 270  
☀ 204°SW (T) ☉ 26°8'14"N, 81°47'16"W ±9ft ▲ 11ft



27 Feb 2024, 12:04:10

Push boat moving hopper out of Canal CC-CC to transport to Canal A-A.





☀ 358°N (T) ☉ 26°7'22"N, 81°47'4"W ±13ft ▲ 6ft



27 Feb 2024, 13:11:53

323 excavator removing sediment at station 11+00 in Canal A-A.





Turbidity curtain in place at station 6+00 in Canal A-A.





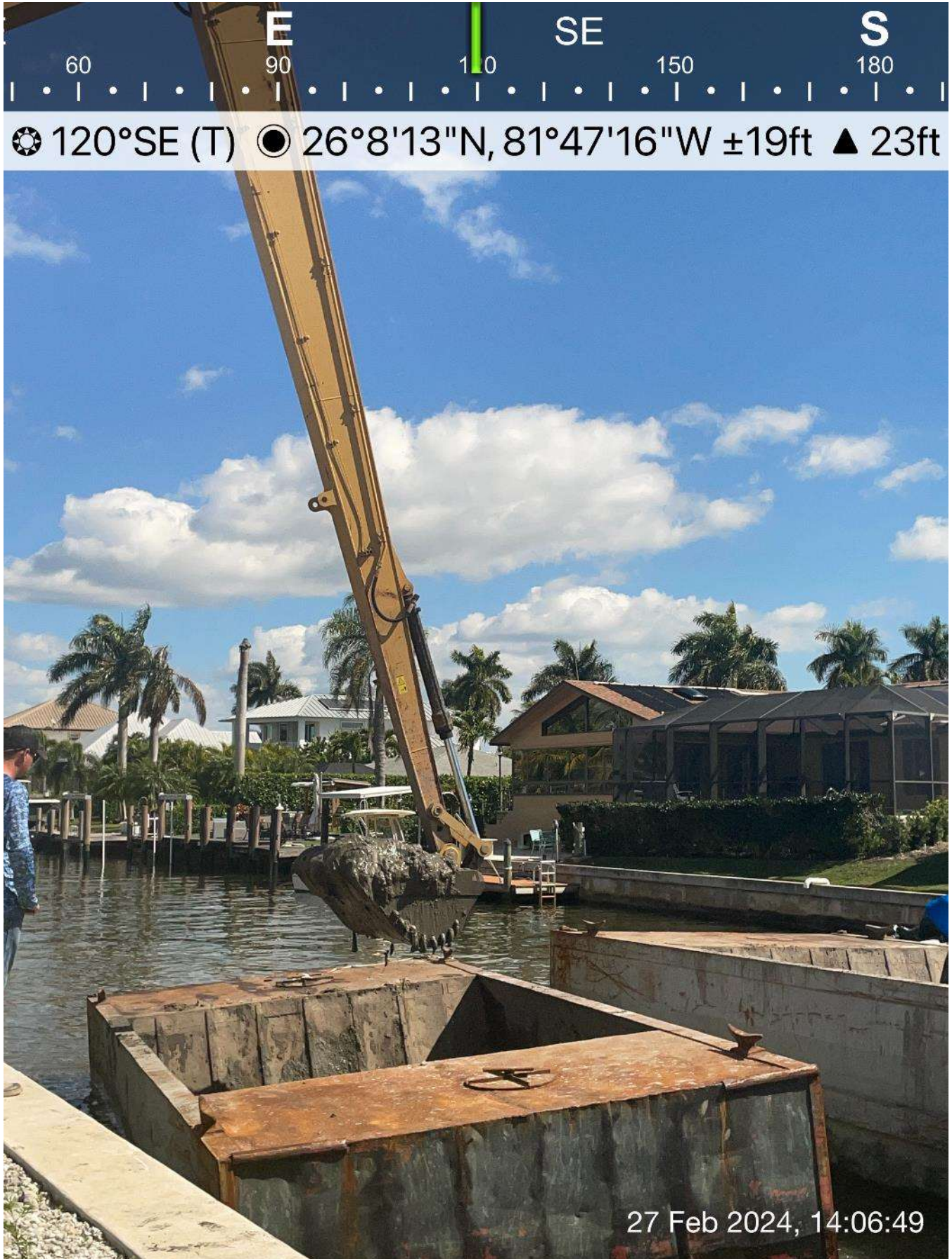
☉ 269°W (T) ● 26°7'19"N, 81°47'6"W ±13ft ▲ 4ft



27 Feb 2024, 13:22:26

Push boat taking hopper to staging area.





Long reach excavator removing sediment from hopper.





☉ 241°SW (T) ☉ 26°8'13"N, 81°47'16"W ±13ft ▲ 11ft



27 Feb 2024, 14:08:21

Push boat taking hopper back to Canal A-A.





☉ 142°SE (T)    ● 26°8'14"N, 81°47'16"W ±13ft    ▲ 8ft



27 Feb 2024, 14:08:50

Long reach excavator spreading sediment onto staging area.





☀ 7°N (T) ☉ 26°7'22"N, 81°47'5"W ±13ft ▲ 2ft



323 excavator removing sediment at station 11+00 in Canal A-A.





☀ 230°SW (T) ● 26°7'19"N, 81°47'6"W ±13ft ▲ 10ft



27 Feb 2024, 15:03:47

Push boat taking hopper to staging area.



E 90 SE 120 150 S 180  
☀ 134°SE (T) ☉ 26°8'13"N, 81°47'16"W ±13ft ▲ 12ft



Long reach excavator removing sediment from hopper.





☀ 237°SW (T) ● 26°8'13"N, 81°47'16"W ±13ft ▲ 8ft



27 Feb 2024, 15:48:51

Push boat taking hopper back to Canal A-A.



E 90 SE 120 150 S 180 210  
☉ 149°SE (T) ☉ 26°8'14"N, 81°47'16"W ±13ft ▲ 8ft



Long reach excavator spreading sediment onto staging area.





Equipment staged at station 6+00 in Canal A-A.





**DAILY REPORT OF CONSTRUCTION**  
 21-036 EAST NAPLES BAY  
 DREDGING AND ROCK REMOVAL PROJECT



Date: <b>2/28/2024</b>			
Inspector: <b>Mackenzie Hudson</b>	Stantec PIN: <b>2028113191</b>		Accidents <input type="checkbox"/> Yes <input checked="" type="checkbox"/> No
Day of Week: <b>Wednesday</b>	Contract Day: <b>157</b>	Week: <b>23</b>	Accident Report #: <b>N/A</b>
High Temp (°F): <b>80 °F</b>	AM Conditions: <b>Sunny</b>	PM Conditions: <b>Sunny</b>	High Tide: <b>2:49 PM – 2.3'</b>
Low Temp (°F): <b>58 °F</b>	Wind: <b>10 to 14 mph</b>	Wind: <b>11 to 13 mph</b>	Low Tide: <b>9:07 AM – 0.5'</b>
Canal Worked In: <b>A-A</b>	Stations Worked Between:	<b>11+00 to 10+50</b>	

**General**

#1 – Prime Contractor – Quality Enterprises:

- Turbidity curtain noted in place at station 6+00 in Canal A-A at 8:10am.
- Canal sediment removal in progress today (Canal A-A) starting at approximately station 11+00 and moving towards station 10+50 in the southwest direction. Sediment removal only, no grinding.
- Contractor dredged from 8:10am to 8:25am. Operator noticed issues with GPS system in the excavator and called for mechanic to address the issue.
- Mechanic arrived on site at 12:35pm and left at 3:45pm.
- Contractor resumed dredging from 3:35pm to 3:50pm. Contractor transported hopper to staging area at 1300 Curlew Avenue from 3:55pm to 4:40pm. Contractor used long reach excavator to unload material from hopper onto staging area from 4:45pm to 5:00pm while the push boat transported the other hopper to Canal A-A.
- Contractor has a barge, an excavator, one hopper, a support boat, and a push boat staged overnight at station 6+00 in Canal A-A. Contractor also has one hopper between stations 1+00 and 2+00 in Canal CC-CC. In addition, the contractor has a long reach excavator, Conex box, two (2) fuel cubes, and a water tank on trailer staged on the property located at 1300 Curlew Avenue, Naples, FL 34102. A GPS base station is also set up at this location during project work hours today.
- One (1) hopper of material removed.



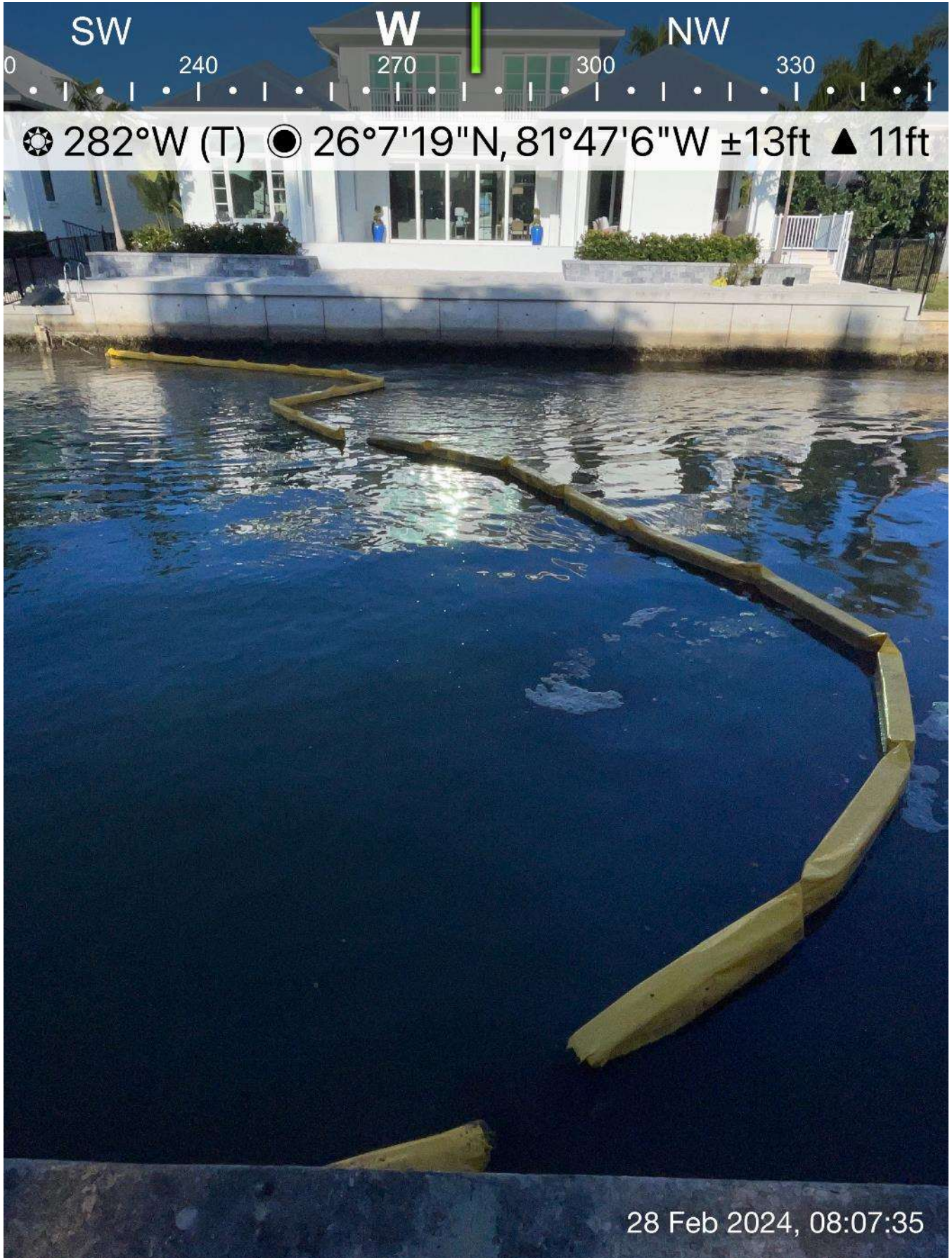
<b>Contractor(s) and Personnel</b>										
#	Name	Type	#	Hrs.	Type	#	Hrs.	Type	#	Hrs.
1	Prime: <b>Quality Enterprises</b>	PM	<b>0</b>	<b>0</b>	Field Supervisor	<b>0</b>	<b>0</b>	Foreman	<b>0</b>	<b>0</b>
		Skilled Laborer	<b>2</b>	<b>10</b>	Unskilled Laborer	<b>1</b>	<b>10</b>	Safety Director	<b>0</b>	<b>0</b>

<b>Equipment</b>					
Cont/ Sub #	Equipment ID	Description	# Pieces	# Used	Total Hours Used
<b>1</b>	<b>N/A</b>	<b>Barge</b>	<b>1</b>	<b>1</b>	<b>3</b>
<b>1</b>	<b>CAT 323</b>	<b>Excavator - Barge</b>	<b>1</b>	<b>1</b>	<b>3</b>
<b>1</b>	<b>CAT 326</b>	<b>Excavator – Long Reach</b>	<b>1</b>	<b>1</b>	<b>1</b>
<b>1</b>	<b>FL6223TB</b>	<b>Push Boat</b>	<b>1</b>	<b>1</b>	<b>3</b>
<b>1</b>	<b>FL2474PP</b>	<b>Support Boat</b>	<b>1</b>	<b>1</b>	<b>3</b>
<b>1</b>	<b>N/A</b>	<b>Hopper</b>	<b>2</b>	<b>2</b>	<b>2</b>

<b>Visitors</b>			
Name	Company	Hours at Job Site	
		From:	To:

<b>Inspector Name and Position</b>	<b>Hours at Job Site/Office</b>		<b>Total Hours</b>
Mackenzie Hudson, EIT – CEI	From: 8:00 AM	To: 5:00 PM	8.0 hours





Turbidity curtain in place at station 6+00 in Canal A-A.





☀ 358°N (T) ☉ 26°7'22"N, 81°47'5"W ±13ft ▲ 7ft



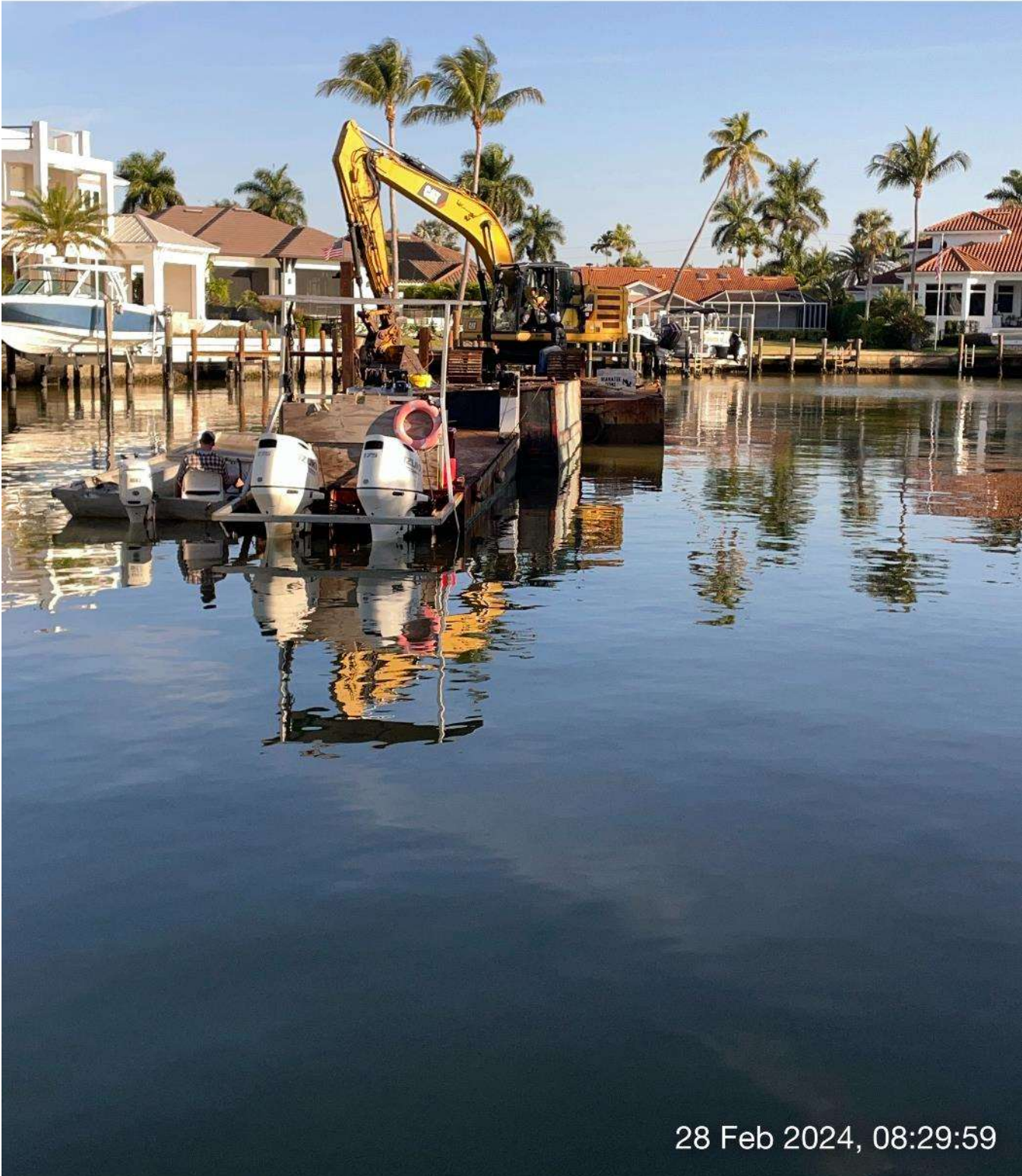
28 Feb 2024, 08:11:24

323 excavator removing sediment at station 11+00 in Canal A-A.





☀ 5°N (T) ☉ 26°7'22"N, 81°47'4"W ±9ft ▲ -3ft



28 Feb 2024, 08:29:59

Contractor stopping the dredge due to an issue with the GPS system in the 323 excavator.





☉ 352°N (T) ☉ 26°7'19"N, 81°47'6"W ±13ft ▲ 9ft



Contractor taking mechanic to the 323 excavator.





☉ 355°N (T) ☉ 26°7'22"N, 81°47'4"W ±9ft ▲ 0ft



Contractor testing the GPS system in the 323 excavator.





☉ 323°NW (T) ● 26°7'23"N, 81°47'4"W ±9ft ▲ 0ft



28 Feb 2024, 15:34:32

323 excavator removing sediment at station 10+50 in Canal A-A.



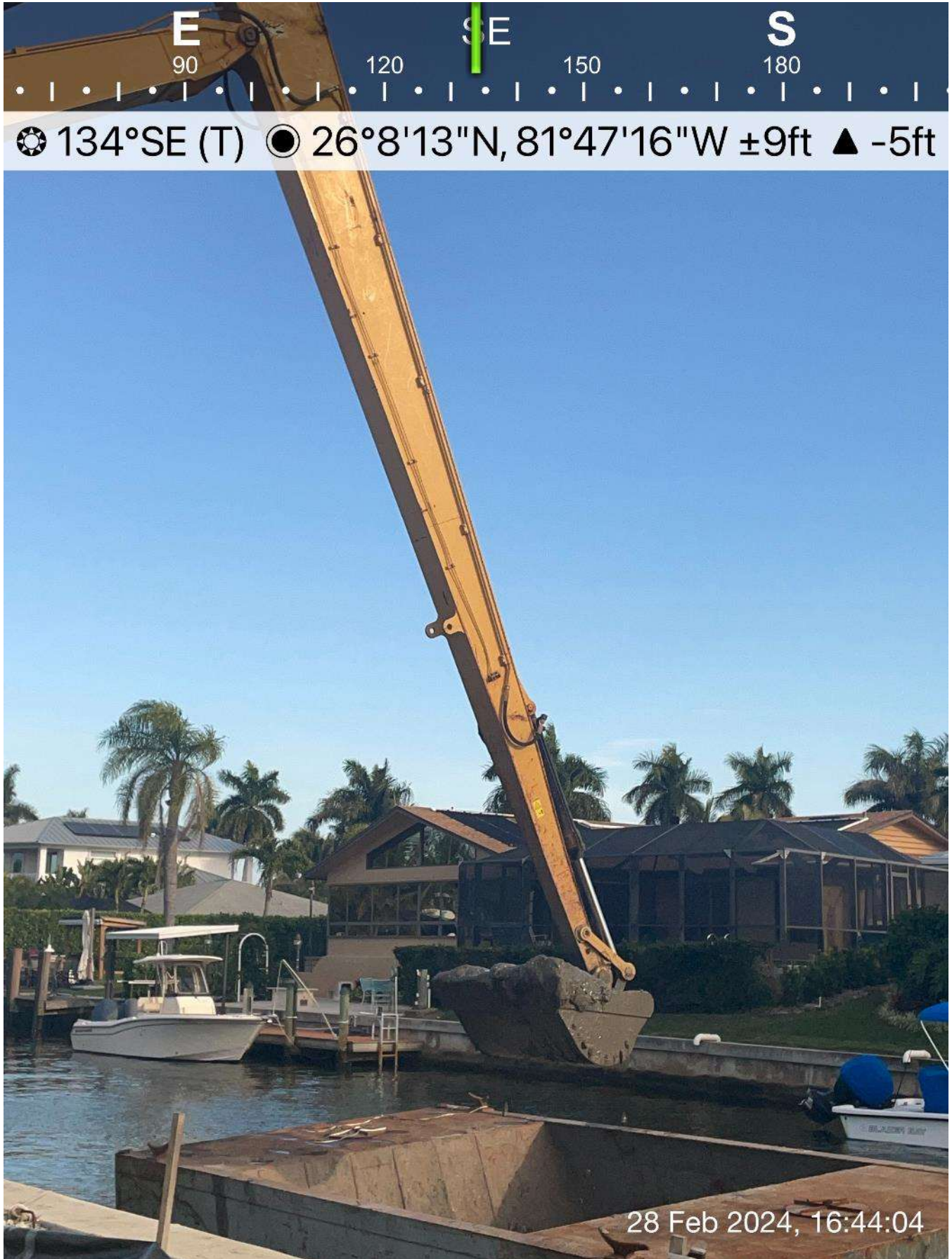
S 180 SW 210 240 W 270 300 NV  
☀ 245°SW (T) ☉ 26°7'19"N, 81°47'6"W ±13ft ▲ -4ft



28 Feb 2024, 15:52:23

Push boat taking hopper to staging area.





Long reach excavator removing sediment from hopper.





☉ 230°SW (T) ● 26°8'13"N, 81°47'16"W ±9ft ▲ 4ft



28 Feb 2024, 16:45:11

Push boat taking hopper back to Canal A-A.



E 90 SE 120 150 S 180  
☀ 133°SE (T) ☉ 26°8'14"N, 81°47'16"W ±13ft ▲ -2ft



Long reach excavator spreading sediment onto staging area.



W 270 NW 300 N 330 0

☉ 318°NW (T) ☉ 26°7'18"N, 81°47'6"W ±9ft ▲ 10ft



Equipment staged at station 6+00 in Canal A-A.





**DAILY REPORT OF CONSTRUCTION**  
 21-036 EAST NAPLES BAY  
 DREDGING AND ROCK REMOVAL PROJECT



Date: <b>2/29/2024</b>			
Inspector: <b>Mackenzie Hudson</b>	Stantec PIN: <b>2028113191</b>	Accidents <input type="checkbox"/> Yes <input checked="" type="checkbox"/> No	
Day of Week: <b>Thursday</b>	Contract Day: <b>158</b>	Week: <b>23</b>	Accident Report #: <b>N/A</b>
High Temp (°F): <b>81 °F</b>	AM Conditions: <b>Cloudy</b>	PM Conditions: <b>Sunny</b>	High Tide: <b>3:05 PM – 2.3'</b>
Low Temp (°F): <b>63 °F</b>	Wind: <b>7 to 8 mph</b>	Wind: <b>3 to 7 mph</b>	Low Tide: <b>9:22 AM – 0.7'</b>
Canal Worked In: <b>A-A</b>	Stations Worked Between:	<b>10+25</b>	

**General**

#1 – Prime Contractor – Quality Enterprises:

- Turbidity curtain noted in place at station 6+00 in Canal A-A at 8:00am.
- Canal sediment removal in progress today (Canal A-A) starting at approximately station 10+25. Sediment removal only, no grinding.
- Contractor dredged from 8:00am to 8:15am. Contractor transported hopper to staging area at 1300 Curlew Avenue from 8:20am to 9:20am. Contractor used long reach excavator to unload material from hopper onto staging area from 9:30am to 9:50am while the push boat transported the other hopper to Canal A-A.
- Contractor resumed dredging from 10:25am to 11:00am. Contractor transported hopper to staging area at 1300 Curlew Avenue from 11:05am to 11:50am. Contractor used long reach excavator to unload material from hopper onto staging area from 11:55am to 12:15pm while the push boat transported the other hopper to Canal A-A.
- Contractor resumed dredging from 1:10pm to 1:30pm. Contractor transported hopper to staging area at 1300 Curlew Avenue from 1:35pm to 2:20pm. Contractor used long reach excavator to unload material from hopper onto staging area from 2:25pm to 2:45pm while the push boat transported the other hopper to Canal A-A.
- Contractor resumed dredging from 3:05pm to 3:40pm. Contractor transported hopper to staging area at 1300 Curlew Avenue from 3:50pm to 4:30pm. Contractor used long reach excavator to unload material from hopper onto staging area from 4:35pm to 5:00pm while the push boat transported the other hopper to Canal A-A.
- Contractor has a barge, an excavator, one hopper, a support boat, and a push boat staged overnight at station 6+00 in Canal A-A. Contractor also has one hopper between stations 1+00 and 2+00 in Canal CC-CC. In addition, the contractor has a long reach excavator, Conex box, two (2) fuel cubes, and a water tank on trailer staged on the property located at 1300 Curlew Avenue, Naples, FL 34102. A GPS base station is also set up at this location during project work hours today.
- Four (4) hoppers of material removed.



<b>Contractor(s) and Personnel</b>										
#	Name	Type	#	Hrs.	Type	#	Hrs.	Type	#	Hrs.
1	Prime: <b>Quality Enterprises</b>	PM	0	0	Field Supervisor	0	0	Foreman	0	0
		Skilled Laborer	2	10	Unskilled Laborer	1	10	Safety Director	0	0

<b>Equipment</b>					
Cont/ Sub #	Equipment ID	Description	# Pieces	# Used	Total Hours Used
1	N/A	Barge	1	1	9
1	CAT 323	Excavator - Barge	1	1	9
1	CAT 326	Excavator – Long Reach	1	1	4
1	FL6223TB	Push Boat	1	1	10
1	FL2474PP	Support Boat	1	1	5
1	N/A	Hopper	2	2	9

<b>Visitors</b>			
Name	Company	Hours at Job Site	
		From:	To:

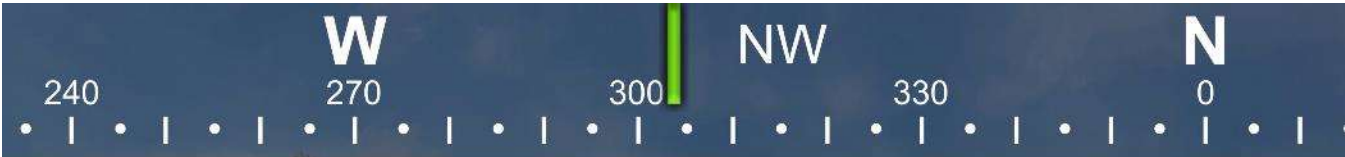
Inspector Name and Position	Hours at Job Site/Office		Total Hours
Mackenzie Hudson, EIT – CEI	From: 8:00 AM	To: 5:00 PM	8.0 hours





Turbidity curtain in place at station 6+00 in Canal A-A.





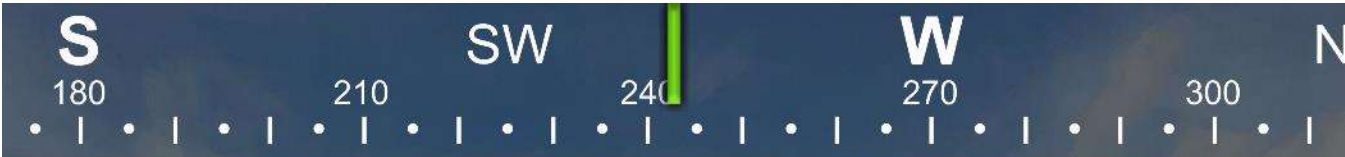
☀ 304°NW (T) ● 26°7'22"N, 81°47'4"W ±78ft ▲ -17ft



29 Feb 2024, 08:10:14

323 excavator removing sediment at station 10+25 in Canal A-A.





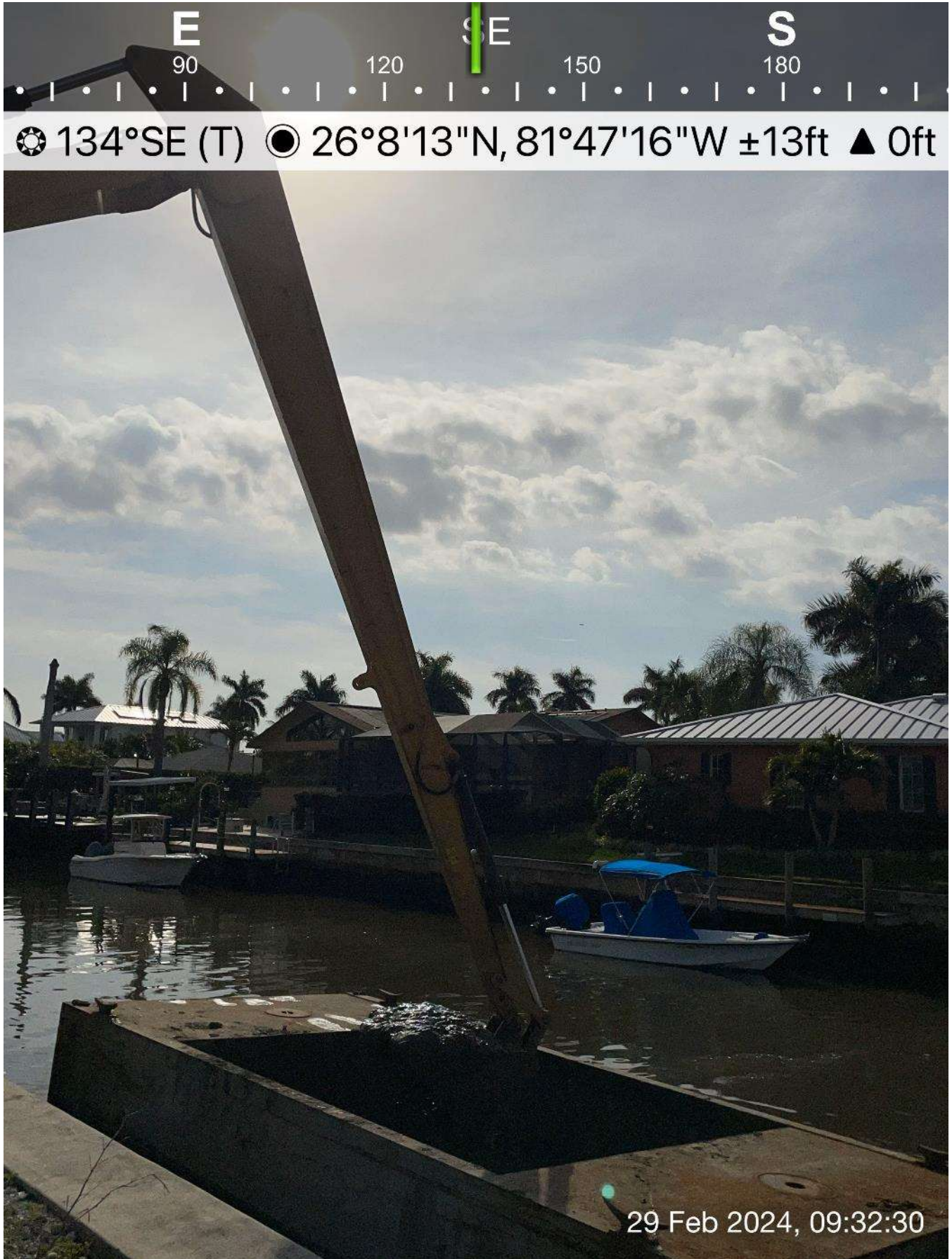
☀ 243°SW (T) ● 26°7'19"N, 81°47'6"W ±13ft ▲ -9ft



29 Feb 2024, 08:17:54

Push boat taking hopper to staging area.





Long reach excavator removing sediment from hopper.





☉ 136°SE (T) ● 26°8'14"N, 81°47'16"W ±13ft ▲ 6ft



29 Feb 2024, 09:33:15

Long reach excavator spreading sediment onto staging area.





☉ 271°W (T) ☉ 26°7'22"N, 81°47'5"W ±13ft ▲ 11ft



29 Feb 2024, 10:26:16

323 excavator removing sediment at station 10+25 in Canal A-A.



SW 210 240 W 270 NW 300  
☀ 254°W (T) ☉ 26°7'19"N, 81°47'6"W ±13ft ▲ 15ft



29 Feb 2024, 11:08:55

Push boat taking hopper to staging area.





☀ 145°SE (T)    ● 26°8'13"N, 81°47'16"W ±13ft    ▲ 1ft



Long reach excavator removing sediment from hopper.



S 180 SW 210 W 240 270

☀ 223°SW (T) ● 26°8'13"N, 81°47'16"W ±13ft ▲ 10ft



29 Feb 2024, 11:56:59

Push boat taking hopper back to Canal A-A.



E 90 SE 120 150 S 180 210

☉ 141°SE (T) ● 26°8'14"N, 81°47'16"W ±13ft ▲ 7ft



29 Feb 2024, 11:57:59

Long reach excavator spreading sediment onto staging area.





☉ 265°W (T) ● 26°7'22"N, 81°47'4"W ±13ft ▲ 0ft



29 Feb 2024, 13:11:58

323 excavator removing sediment at station 10+25 in Canal A-A.

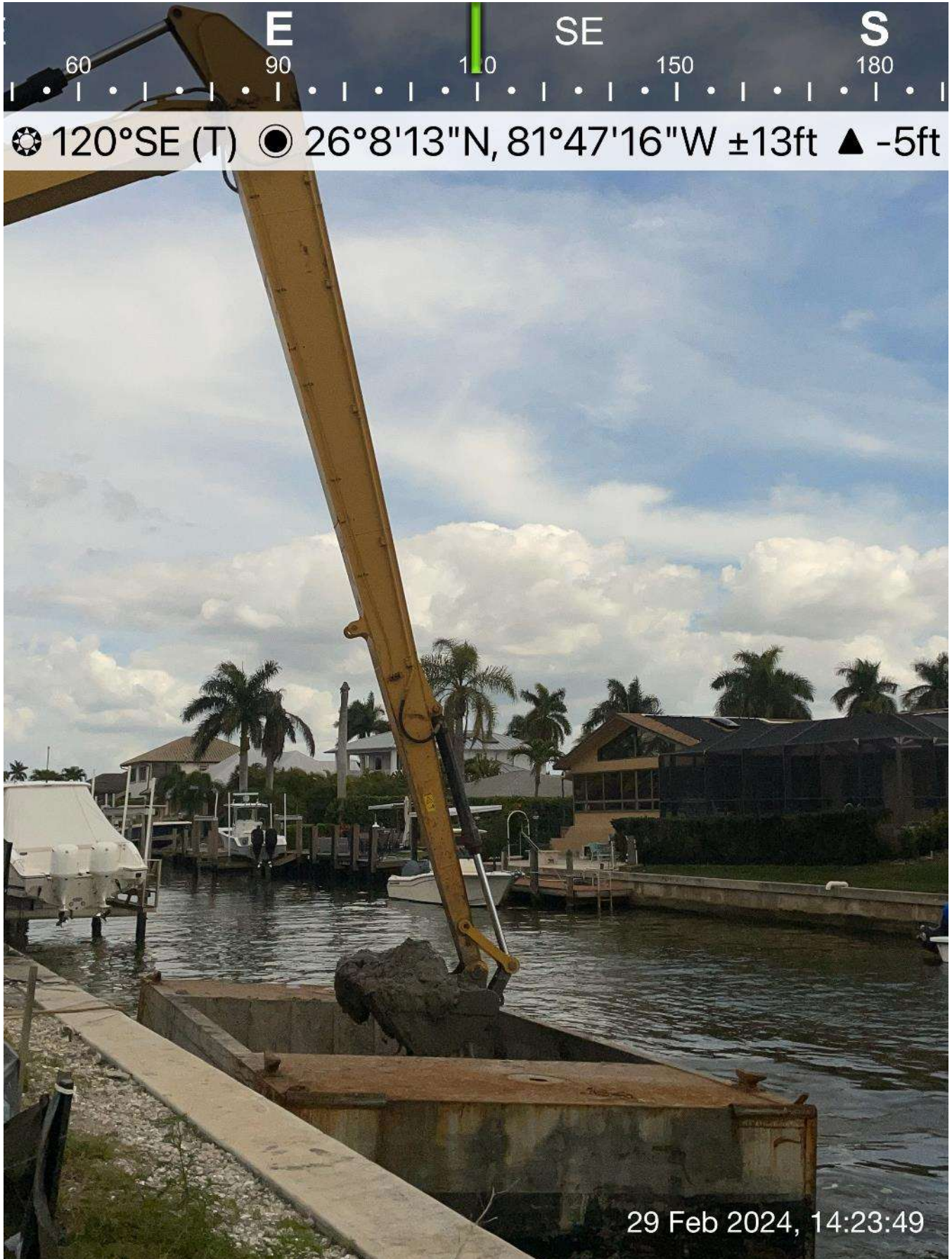


S 180 SW 210 240 W 270 300  
☀ 236°SW (T) ☉ 26°7'19"N, 81°47'6"W ±13ft ▲ -2ft



Push boat taking hopper to staging area.





Long reach excavator removing sediment from hopper.





☉ 225°SW (T) ● 26°8'13"N, 81°47'16"W ±13ft ▲ 6ft



29 Feb 2024, 14:25:08

Push boat taking hopper back to Canal A-A.





☉ 146°SE (T)    ● 26°8'14"N, 81°47'16"W ±13ft    ▲ 8ft



29 Feb 2024, 14:25:32

Long reach excavator spreading sediment onto staging area.





☉ 322°NW (T) ☉ 26°7'22"N, 81°47'5"W ±9ft ▲ 15ft



29 Feb 2024, 15:04:58

323 excavator removing sediment at station 10+25 in Canal A-A.





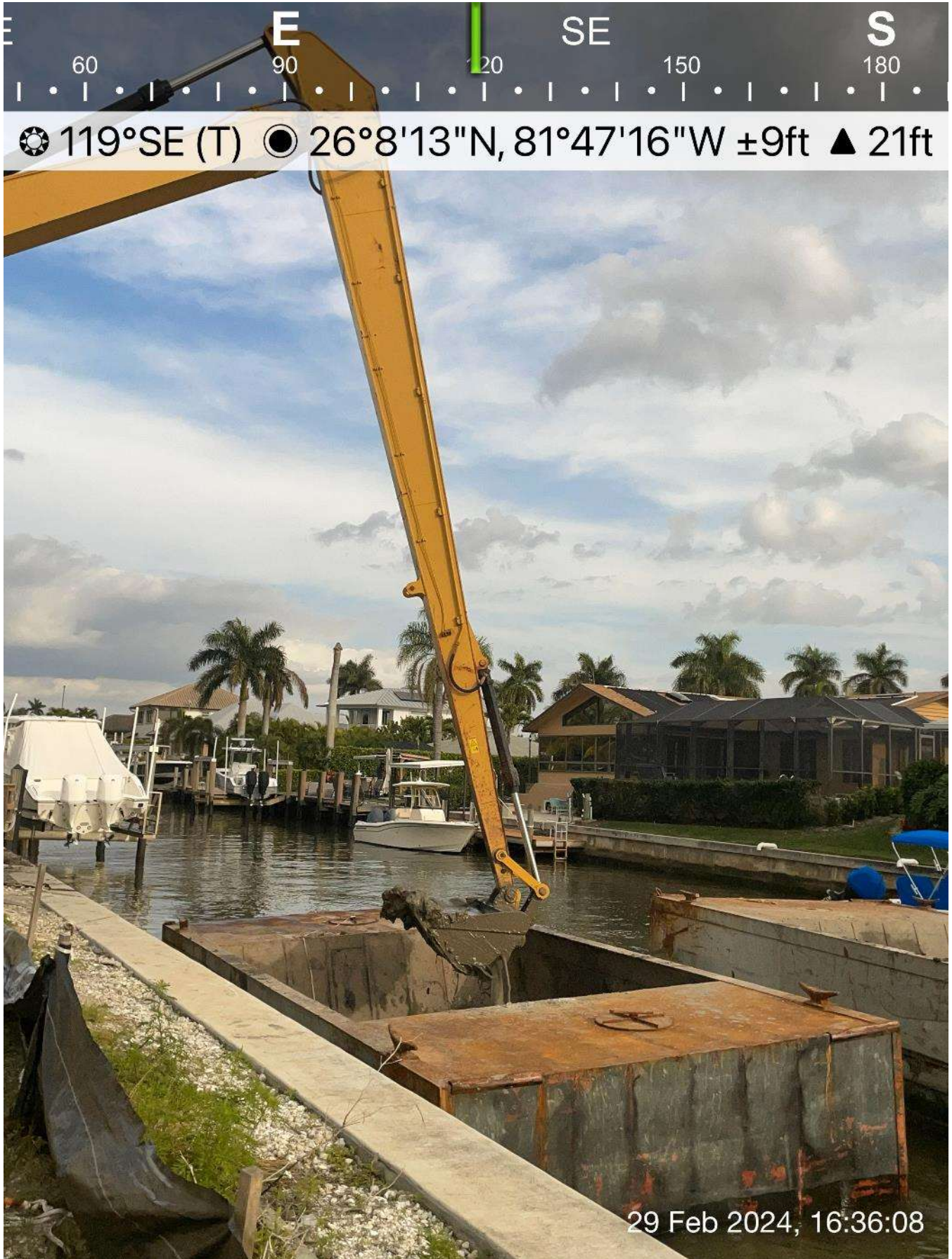
☉ 292°W (T)    ● 26°7'19"N, 81°47'6"W ±42ft    ▲ 15ft



29 Feb 2024, 15:53:10

Push boat taking hopper to staging area.





Long reach excavator removing sediment from hopper.





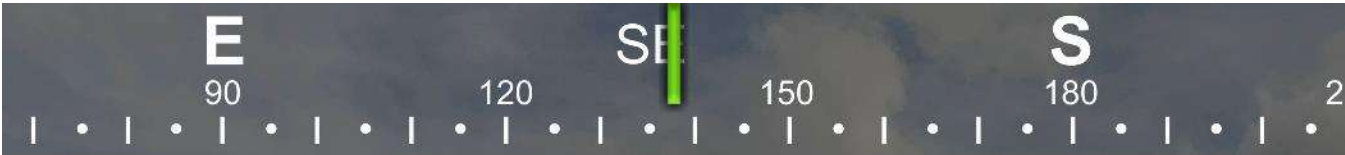
☀ 224°SW (T) ● 26°8'13"N, 81°47'16"W ±9ft ▲ 12ft



29 Feb 2024, 16:37:21

Push boat taking hopper back to Canal A-A.





☀ 138°SE (T) ☉ 26°8'14"N, 81°47'16"W ±13ft ▲ 12ft



29 Feb 2024, 16:38:53

Long reach excavator spreading sediment onto staging area.





**DAILY REPORT OF CONSTRUCTION**  
 21-036 EAST NAPLES BAY  
 DREDGING AND ROCK REMOVAL PROJECT



Date: <b>3/1/2024</b>			
Inspector: <b>Mackenzie Hudson</b>	Stantec PIN: <b>2028113191</b>		Accidents <input type="checkbox"/> Yes <input checked="" type="checkbox"/> No
Day of Week: <b>Friday</b>	Contract Day: <b>159</b>	Week: <b>23</b>	Accident Report #: <b>N/A</b>
High Temp (°F): <b>80 °F</b>	AM Conditions: <b>Cloudy</b>	PM Conditions: <b>Cloudy</b>	High Tide: <b>3:26 PM – 2.3'</b>
Low Temp (°F): <b>65 °F</b>	Wind: <b>8 to 17 mph</b>	Wind: <b>10 to 12 mph</b>	Low Tide: <b>9:33 AM – 0.9'</b>
Canal Worked In: <b>A-A</b>	Stations Worked Between:	<b>10+00</b>	

**General**

#1 – Prime Contractor – Quality Enterprises:

- Turbidity curtain noted in place at station 6+00 in Canal A-A at 8:00am.
- Canal sediment removal in progress today (Canal A-A) starting at approximately station 10+00. Sediment removal only, no grinding.
- Contractor dredged from 8:00am to 8:15am. Contractor transported hopper to staging area at 1300 Curlew Avenue from 8:20am to 9:05am. Contractor used long reach excavator to unload material from hopper onto staging area from 9:10am to 9:25am while the push boat transported the other hopper to Canal A-A.
- Contractor resumed dredging from 9:45am to 10:00am. Contractor transported hopper to staging area at 1300 Curlew Avenue from 10:05am to 10:45am. Contractor used long reach excavator to unload material from hopper onto staging area from 10:50am to 11:05am while the push boat transported the other hopper to Canal A-A.
- Mechanic arrived on site at 11:45am to look at the GPS sensor system on the 323 excavator. Mechanic left site at 1:10pm.
- Contractor resumed dredging from 1:05pm to 1:30pm. Contractor transported hopper to staging area at 1300 Curlew Avenue from 1:35pm to 2:35pm. Contractor used long reach excavator to unload material from hopper onto staging area from 2:40pm to 3:00pm while the push boat transported the other hopper to Canal A-A.
- Contractor has a barge, an excavator, one hopper, a support boat, and a push boat staged overnight at station 4+00 in Canal Main B1. Contractor also has one hopper between stations 1+00 and 2+00 in Canal CC-CC. In addition, the contractor has a long reach excavator, Conex box, two (2) fuel cubes, and a water tank on trailer staged on the property located at 1300 Curlew Avenue, Naples, FL 34102. A GPS base station is also set up at this location during project work hours today.
- Three (3) hoppers of material removed.



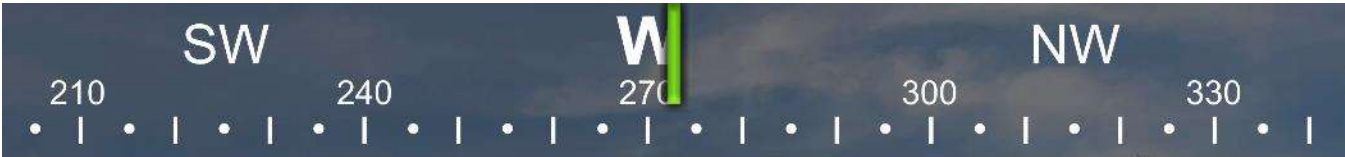
<b>Contractor(s) and Personnel</b>										
#	Name	Type	#	Hrs.	Type	#	Hrs.	Type	#	Hrs.
1	Prime: <b>Quality Enterprises</b>	PM	0	0	Field Supervisor	0	0	Foreman	0	0
		Skilled Laborer	2	9	Unskilled Laborer	1	9	Safety Director	0	0

<b>Equipment</b>					
Cont/ Sub #	Equipment ID	Description	# Pieces	# Used	Total Hours Used
1	N/A	Barge	1	1	7
1	CAT 323	Excavator - Barge	1	1	5
1	CAT 326	Excavator – Long Reach	1	1	3
1	FL6223TB	Push Boat	1	1	7
1	FL2474PP	Support Boat	1	1	4
1	N/A	Hopper	2	2	6

<b>Visitors</b>			
Name	Company	Hours at Job Site	
		From:	To:

Inspector Name and Position	Hours at Job Site/Office		Total Hours
Mackenzie Hudson, EIT – CEI	From: 8:00 AM / 4:30 PM	To: 4:00 PM / 5:00 PM	8.0 hours





☀ 273°W (T) ● 26°7'22"N, 81°47'5"W ±13ft ▲ 7ft



01 Mar 2024, 08:04:26

323 excavator removing sediment at station 10+00 in Canal A-A.





Turbidity curtain in place at station 6+00 in Canal A-A.





☉ 227°SW (T) ☉ 26°7'19"N, 81°47'6"W ±13ft ▲ 11ft



01 Mar 2024, 08:20:32

Push boat taking hopper to staging area.



E 90 SE 120 150 180 S

☀ 131°SE (T) ● 26°8'13"N, 81°47'16"W ±13ft ▲ 10ft



01 Mar 2024, 09:09:50

Long reach excavator removing sediment from hopper.



SW W NW  
210 240 270 300 330

☉ 261°W (T) ● 26°8'13"N, 81°47'16"W ±13ft ▲ 12ft



01 Mar 2024, 09:10:03

Push boat taking hopper back to Canal A-A.





☀ 147°SE (T) ● 26°8'14"N, 81°47'16"W ±13ft ▲ 10ft



01 Mar 2024, 09:10:52

Long reach excavator spreading sediment onto staging area.





☀ 265°W (T)    ● 26°7'22"N, 81°47'5"W ±13ft    ▲ 12ft



01 Mar 2024, 09:48:58

323 excavator removing sediment at station 10+00 in Canal A-A.





☀ 216°SW (T) ● 26°7'19"N, 81°47'6"W ±13ft ▲ 12ft



01 Mar 2024, 10:04:19

Push boat taking hopper to staging area.





☀ 125°SE (T) ● 26°8'13"N, 81°47'16"W ±13ft ▲ 13ft



01 Mar 2024, 10:49:38

Long reach excavator removing sediment from hopper.





☉ 224°SW (T) ● 26°8'13"N, 81°47'16"W ±13ft ▲ 4ft



Push boat taking hopper back to Canal A-A.





☀ 150°SE (T) ● 26°8'14"N, 81°47'16"W ±13ft ▲ 11ft



Long reach excavator spreading sediment onto staging area.



SW W NW  
210 240 270 300 330

☉ 278°W (T) ☉ 26°7'22"N, 81°47'5"W ±9ft ▲ 10ft



01 Mar 2024, 11:43:59

Mechanic arriving on site to look at GPS sensor system.



SW W NW  
10 240 270 300 330

☉ 280°W (T) ☉ 26°7'22"N, 81°47'5"W ±13ft ▲ 7ft



01 Mar 2024, 13:01:09

Mechanic looking at GPS sensor system.



SW W NW  
210 240 270 300 330

☉ 277°W (T) ☉ 26°7'22"N, 81°47'5"W ±9ft ▲ 2ft



01 Mar 2024, 13:08:42

323 excavator removing sediment at station 10+00 in Canal A-A.





Push boat taking hopper to staging area.



NE 60 E 90 120 SE 150 S 180

☀ 114°SE (T) ● 26°8'13"N, 81°47'16"W ±13ft ▲ 18ft



Long reach excavator removing sediment from hopper.





☀ 235°SW (T) ● 26°8'13"N, 81°47'16"W ±13ft ▲ 17ft



Push boat taking hopper back to Canal A-A.





☀ 144°SE (T) ☉ 26°8'14"N, 81°47'16"W ±13ft ▲ 13ft



01. Mar 2024, 14:43:06

Long reach excavator spreading sediment onto staging area.



S 180 SW 210 W 240 270

☀ 223°SW (T) ● 26°7'19"N, 81°47'6"W ±13ft ▲ 12ft



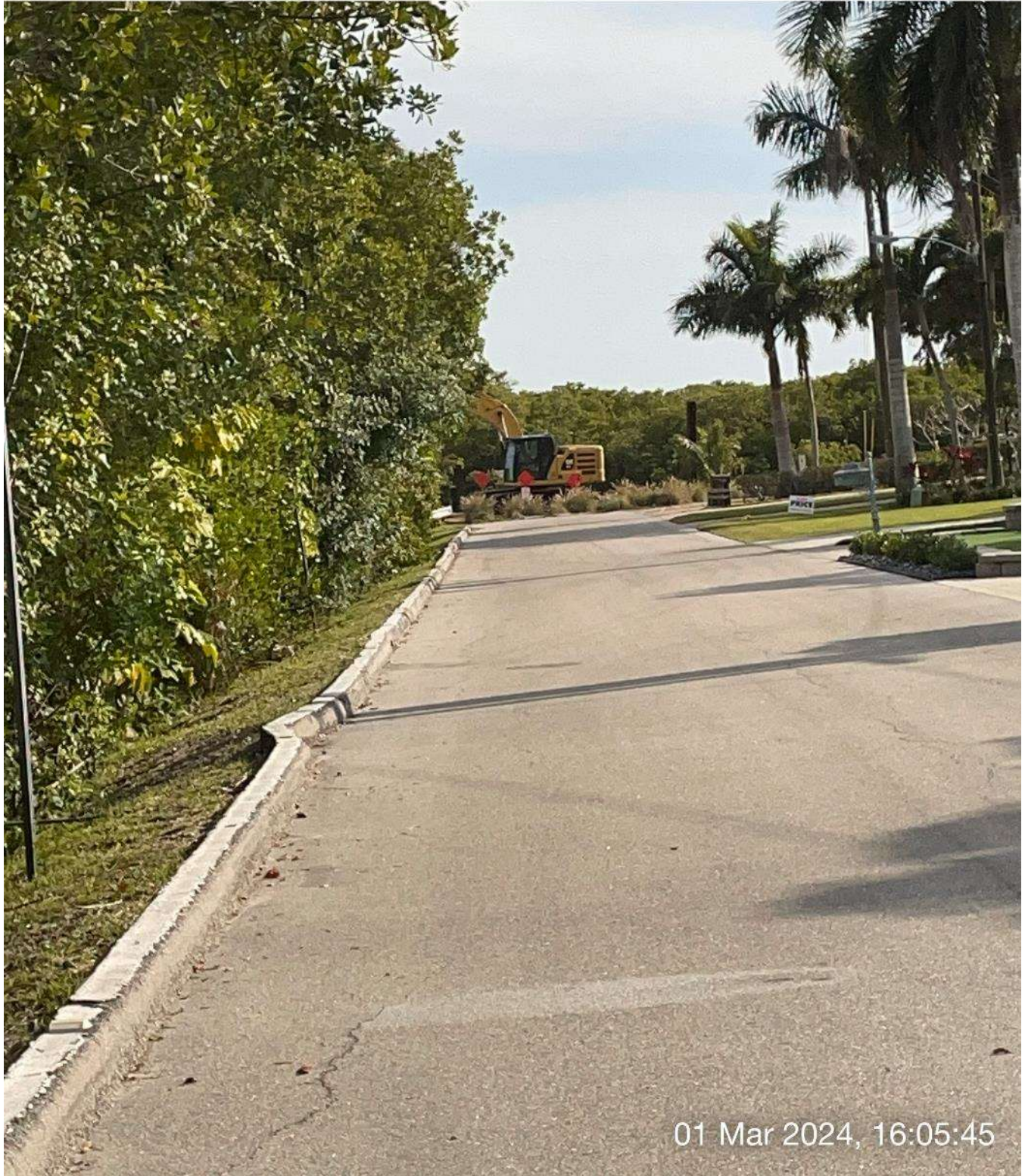
01 Mar 2024, 15:30:02

Contractor exiting Canal A-A.





☀ 174°S (T) ☉ 26°7'24"N, 81°46'57"W ±9ft ▲ 9ft



01 Mar 2024, 16:05:45

Equipment staged at station 4+00 in Canal Main B1.