



WEEKLY SUMMARY REPORT – CONTRACT WEEK 22

21-036 EAST NAPLES BAY

DREDGING AND ROCK REMOVAL PROJECT



Date: 3/14/2022 to 3/18/2022			
Inspectors: Sam Boyd	Stantec PIN: 2028113191		Accidents <input type="checkbox"/> Yes <input checked="" type="checkbox"/> No
Days of Week: Monday to Friday	Contract Days: 148 to 152	Total Days: 365	Accident Report #: N/A
Canal(s) Worked In: BB-BB	Stations Worked Between: 1+75 to 11+50		

General

Remarks

#1 – Prime Contractor – Quality Enterprises:

Monday 03-14-2022:

- Contractor has an excavator mounted on a barge staged in Canal BB-BB at station 1+75. Contractor also has a push boat, a support boat, and a hopper staged in Canal CC-CC at station 2+00. In addition, Contractor has a long-reach excavator, a front end loader, a water tank, and two fuel cubes staged on the property located at 1300 Curlew Avenue, Naples, FL, 34102.
- Contractor installed turbidity curtain across the mouth of Canal BB-BB.
- Contractor used 323 excavator to check bottom elevations and grind rock between stations 1+75 and 8+00.
- Contractor used push boat to position barge as necessary for grinding rock.
- Two dump trucks came to the site at 1300 Curlew Avenue.
- Contractor used front end loader to transport 4 truckloads of removed material from dewatering site to dump truck beds.
- Dump trucks took material off site.

Tuesday 03-15-2022:

- Contractor has an excavator mounted on a barge staged in Canal BB-BB at station 7+75. Contractor also has a push boat, a support boat, and a hopper staged in Canal CC-CC at station 2+00. In addition, Contractor has a long-reach excavator, a front end loader, a water tank, and two fuel cubes staged on the property located at 1300 Curlew Avenue, Naples, FL, 34102.
- Contractor installed turbidity curtain across the mouth of Canal BB-BB.
- Contractor used 323 excavator to check bottom elevations and grind rock between stations 8+00 and 9+00.
- Contractor used push boat to position barge as necessary for grinding rock.

Wednesday 03-16-2022:

- Contractor has an excavator mounted on a barge staged in Canal BB-BB at station 8+00. Contractor also has a push boat, a support boat, and a hopper staged in Canal CC-CC at station 2+00. In addition, Contractor has a long-reach excavator, a front end loader, a water tank, and two fuel cubes staged on the property located at 1300 Curlew Avenue, Naples, FL, 34102.
- Push boat used to transport mechanic to barge to replace a DEF filter on 323 excavator.
- Contractor installed turbidity curtain across the mouth of Canal BB-BB.



WEEKLY SUMMARY REPORT – CONTRACT WEEK 22

21-036 EAST NAPLES BAY

DREDGING AND ROCK REMOVAL PROJECT



- Contractor used 323 excavator to check bottom elevations and grind rock between stations 8+00 and 10+00.
- Contractor used push boat to position barge as necessary for grinding rock.

Thursday 03-17-2022:

- Contractor has an excavator mounted on a barge staged in Canal BB-BB at station 11+00. Contractor also has a push boat, a support boat, and a hopper staged in Canal CC-CC at station 2+00. In addition, Contractor has a long-reach excavator, a front end loader, a water tank, and two fuel cubes staged on the property located at 1300 Curlew Avenue, Naples, FL, 34102.
- Contractor installed turbidity curtain across the mouth of Canal BB-BB.
- Contractor used 323 excavator to check bottom elevations and remove 3 hoppers of material between stations 9+50 and 11+50.
- Contractor used push boat to position barge as necessary for removing material.
- Contractor used push boat to transport hopper from canal BB-BB to canal CC-CC station 1+50.
- Contractor used 326 excavator to transfer 3 hoppers of material from hopper to dewatering site at 1300 Curlew Avenue.
- Contractor used support boat to open and close turbidity curtain as necessary for transporting hopper.

Friday 03-18-2022:

- Contractor has an excavator mounted on a barge staged in Canal BB-BB at station 10+00. Contractor also has a push boat, a support boat, and a hopper staged in Canal CC-CC at station 2+00. In addition, Contractor has a long-reach excavator, a front end loader, a water tank, and two fuel cubes staged on the property located at 1300 Curlew Avenue, Naples, FL, 34102.
- Contractor installed turbidity curtain across the mouth of Canal BB-BB.
- Contractor used 323 excavator to check bottom elevations and remove 3 hoppers of material between stations 9+50 and 10+50.
- Contractor used push boat to position barge as necessary for removing material.
- Contractor used push boat to transport hopper from canal BB-BB to Canal CC-CC station 1+50.
- Contractor used 326 excavator to transfer 3 hoppers of material from hopper to dewatering site at 1300 Curlew Avenue.
- Contractor used support boat to open and close turbidity curtain as necessary for transporting hopper.
- Contractor used push boat to transport barge and 323 excavator from Canal BB-BB to Canal CC-CC station 2+00.

Note: Daily reports with pictures attached for the week.



DAILY REPORT OF CONSTRUCTION
 21-036 EAST NAPLES BAY
 DREDGING AND ROCK REMOVAL PROJECT



Date: 03/14/2022			
Inspectors: SB	Stantec PIN: 2028113191		Accidents <input type="checkbox"/> Yes <input checked="" type="checkbox"/> No
Day of Week: Monday	Contract Day: 148/365	Week: 22	Accident Report #: N/A
High Temp (°F): 84°F	AM Conditions: Sunny	PM Conditions: Sunny	High Tide: 12:46 PM +2.0'
Low Temp (°F): 55°F	Wind: 8 mph	Wind: 9 mph	Low Tide: 5:58 AM -0.2'
Canal Worked In: BB-BB	Stations Worked Between:	1+75 to 8+00	

General
<p>#1 – Prime Contractor – Quality Enterprises:</p> <ul style="list-style-type: none"> • Contractor has an excavator mounted on a barge staged in Canal BB-BB at station 1+75. Contractor also has a push boat, a support boat, and a hopper staged in Canal CC-CC at station 2+00. In addition, Contractor has a long-reach excavator, a front end loader, a water tank, and two fuel cubes staged on the property located at 1300 Curlew Avenue, Naples, FL, 34102. • Contractor installed turbidity curtain across the mouth of Canal BB-BB. • Contractor used 323 excavator to check bottom elevations and grind rock between stations 1+75 and 8+00. • Contractor used push boat to position barge as necessary for grinding rock. • Two dump trucks came to the site at 1300 Curlew Avenue. • Contractor used front end loader to transport 4 truckloads of removed material from dewatering site to dump truck beds. • Dump trucks took material off site.

Contractor(s) and Personnel										
#	Name	Type	#	Hrs.	Type	#	Hrs.	Type	#	Hrs.
1	Prime: Quality Enterprises	PM	0	0	Boat Captain	1	9	Mechanic	0	0
		Excavator Operator	1	9	Truck Driver	2	5	Assistant	1	9
		Technician	0	0	Superintendent	0	0	VP	0	0

Equipment					
Cont/ Sub #	Equipment ID	Description	# Pieces	# Used	Total Hours Used
1	N/A	Barge	1	1	9
1	CAT 323	Excavator	1	1	9
1	CAT 326	Excavator	1	0	0
1	02016	Front End Loader	1	1	2
1	FL6223TB	Push Boat	1	1	9
1	FL2474PP	Support Boat	1	0	0
1	N3758Z	Fuel Truck	0	0	0
1	P9457E	Water Truck	0	0	0
1	725RZM	Water Tank	0	0	0
1	Z67EAZ	Small Dump truck	0	0	0
1	PB727E	Dump truck	1	1	5
1	MB28DQ	Dump truck	1	1	5
1	MB26DQ	Utility Truck	0	0	0
1	DRHS18	Utility Truck	0	0	0
1	N9524Z	Transport Truck	0	0	0

Visitors			
Name	Company	Hours at Job Site	
		From:	To:

Inspector Name and Position	Hours at Job Site/Office		Total Hours
Sam Boyd, EIT	From: 8:30 AM	To: 4:30 PM	8.0



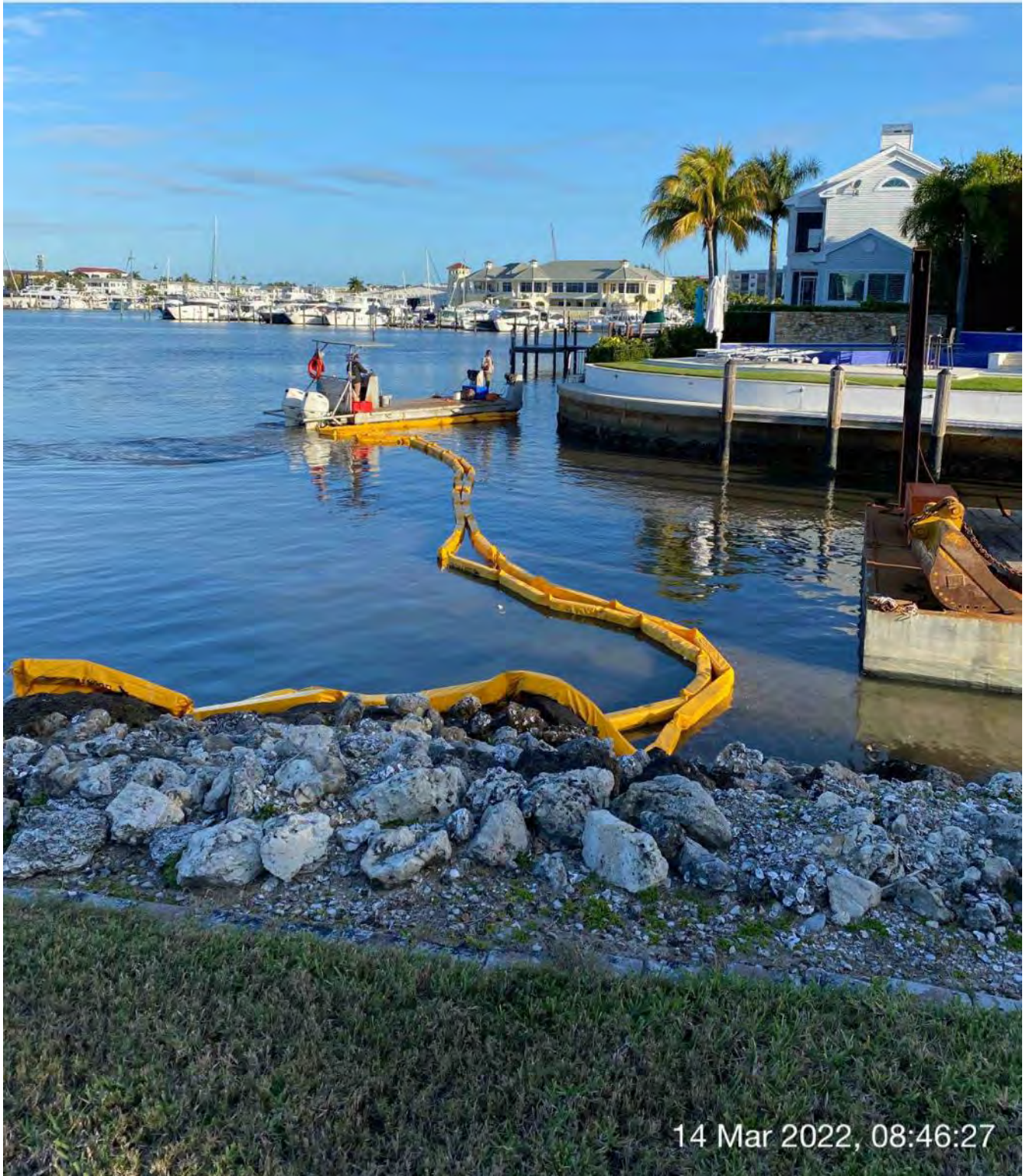
☉ 342°N (T) ☉ 26°8'8"N, 81°47'15"W ±26ft ▲ 8ft



14 Mar 2022, 08:40:42

323 excavator lifting spud to allow push boat to mobilize barge at station 1+50

W 270 NW 300 330 N 0 NE 30
☀ 336°NW (T) ☉ 26°8'8"N, 81°47'16"W ±16ft ▲ 9ft



Installing turbidity curtain across the mouth of Canal BB-BB

W NW N
240 270 300 330 0
☀ 306°NW (T) ☉ 26°8'8"N, 81°47'15"W ±13ft ▲ 9ft



14 Mar 2022, 08:48:47

323 excavator grinding rock at station 1+75



Two dump trucks entering site at 1300 Curlew Avenue

SW W NW
210 240 270 300 3
☀ 258°W (T) ☉ 26°8'15"N, 81°47'15"W ±13ft ▲ 9ft



Using front end loader to transfer removed material from dewatering site to dump truck bed

S 180 SW 210 240 W 270 300

☀ 241°SW (T) ☉ 26°8'14"N, 81°47'15"W ±22ft ▲ 12ft



Front end loader removing material from the dewatering site

N 0 30 60 90 120 SE
66°NE (T) 26°8'9"N, 81°47'13"W ±19ft ▲ 8ft



323 excavator grinding rock at station 5+00



☀ 43°NE (T) ● 26°8'8"N, 81°47'13"W ±62ft ▲ 8ft



323 excavator lifting spud to allow push boat to mobilize barge at station 4+50

W 270 NW 300 330 N 0 NE 30
☀ 336°NW (T) ☉ 26°8'8"N, 81°47'10"W ±22ft ▲ 8ft



323 excavator lifting spud to allow push boat to mobilize barge at station 6+00

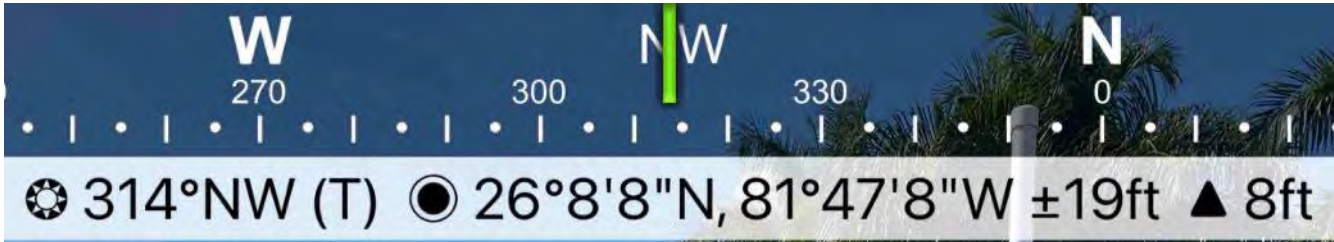


☀ 343°N (T) ☉ 26°8'8"N, 81°47'10"W ±13ft ▲ 3ft



14 Mar 2022, 13:42:20

323 excavator grinding rock at station 6+50



323 excavator grinding rock at station 8+00



DAILY REPORT OF CONSTRUCTION
 21-036 EAST NAPLES BAY
 DREDGING AND ROCK REMOVAL PROJECT



Date: 03/15/2022			
Inspectors: SB	Stantec PIN: 2028113191		Accidents <input type="checkbox"/> Yes <input checked="" type="checkbox"/> No
Day of Week: Tuesday	Contract Day: 149/365	Week: 22	Accident Report #: N/A
High Temp (°F): 86°F	AM Conditions: Cloudy	PM Conditions: Cloudy	High Tide: 1:02 PM +2.1'
Low Temp (°F): 67°F	Wind: 10 mph	Wind: 17 mph	Low Tide: 6:36 AM -0.2'
Canal Worked In: BB-BB	Stations Worked Between:	8+00 to 9+00	

General			
#1 – Prime Contractor – Quality Enterprises:			
<ul style="list-style-type: none"> • Contractor has an excavator mounted on a barge staged in Canal BB-BB at station 7+75. Contractor also has a push boat, a support boat, and a hopper staged in Canal CC-CC at station 2+00. In addition, Contractor has a long-reach excavator, a front end loader, a water tank, and two fuel cubes staged on the property located at 1300 Curlew Avenue, Naples, FL, 34102. • Contractor installed turbidity curtain across the mouth of Canal BB-BB. • Contractor used 323 excavator to check bottom elevations and grind rock between stations 8+00 and 9+00. • Contractor used push boat to position barge as necessary for grinding rock. 			

Contractor(s) and Personnel										
#	Name	Type	#	Hrs.	Type	#	Hrs.	Type	#	Hrs.
1	Prime: Quality Enterprises	PM	0	0	Boat Captain	1	9	Mechanic	0	0
		Excavator Operator	1	9	Truck Driver	0	0	Assistant	1	9
		Technician	0	0	Superintendent	0	0	VP	0	0

Equipment					
Cont/ Sub #	Equipment ID	Description	# Pieces	# Used	Total Hours Used
1	N/A	Barge	1	1	9
1	CAT 323	Excavator	1	1	9
1	CAT 326	Excavator	1	0	0
1	02016	Front End Loader	1	0	0
1	FL6223TB	Push Boat	1	1	9
1	FL2474PP	Support Boat	1	0	0
1	N3758Z	Fuel Truck	0	0	0
1	P9457E	Water Truck	0	0	0
1	725RZM	Water Tank	0	0	0
1	Z67EAZ	Small Dump truck	0	0	0
1	PB727E	Dump truck	0	0	0
1	MB28DQ	Dump truck	0	0	0
1	MB26DQ	Utility Truck	0	0	0
1	DRHS18	Utility Truck	0	0	0
1	N9524Z	Transport Truck	0	0	0

Visitors			
Name	Company	Hours at Job Site	
		From:	To:

Inspector Name and Position	Hours at Job Site/Office		Total Hours
Sam Boyd, EIT	From: 8:30 AM	To: 4:30 PM	8.0



☉ 179°S (T) ☉ 26°8'14"N, 81°47'15"W ±19ft ▲ 8ft



Removed material at dewatering site at 1300 Curlew Avenue

W 270 NW 300 330 N 0 30 N
☀ 335°NW (T) ☉ 26°8'8"N, 81°47'9"W ±32ft ▲ 8ft



15 Mar 2022, 08:41:35

323 excavator grinding rock at station 8+00



☀ 19°N (T) ☉ 26°8'8"N, 81°47'16"W ±26ft ▲ 8ft



15 Mar 2022 08:46:21

Turbidity curtain across the mouth of Canal BB-BB



☀ 311°NW (T) ☉ 26°8'8"N, 81°47'8"W ±13ft ▲ 8ft



15 Mar 2022, 10:22:50

323 excavator grinding rock at station 8+25



☉ 26°NE (T) ● 26°8'8"N, 81°47'8"W ±32ft ▲ 8ft



15 Mar 2022, 14:55:06

323 excavator grinding rock at station 8+50

W

270

NW

300

330

N

0

30

☀ 322°NW (T) ● 26°8'8"N, 81°47'7"W ±13ft ▲ 8ft



15 Mar 2022, 16:12:33

323 excavator on barge at station 8+50



DAILY REPORT OF CONSTRUCTION
21-036 EAST NAPLES BAY
DREDGING AND ROCK REMOVAL PROJECT



Date: 03/16/2022			
Inspectors: SB	Stantec PIN: 2028113191	Accidents <input type="checkbox"/> Yes <input checked="" type="checkbox"/> No	
Day of Week: Wednesday	Contract Day: 150/365	Week: 22	Accident Report #: N/A
High Temp (°F): 84°F	AM Conditions: Cloudy	PM Conditions: Sunny	High Tide: 1:23 PM +2.3'
Low Temp (°F): 68°F	Wind: 5 mph	Wind: 14 mph	Low Tide: 7:11 AM -0.2'
Canal Worked In: BB-BB	Stations Worked Between:	8+50 to 10+00	

General

#1 – Prime Contractor – Quality Enterprises:

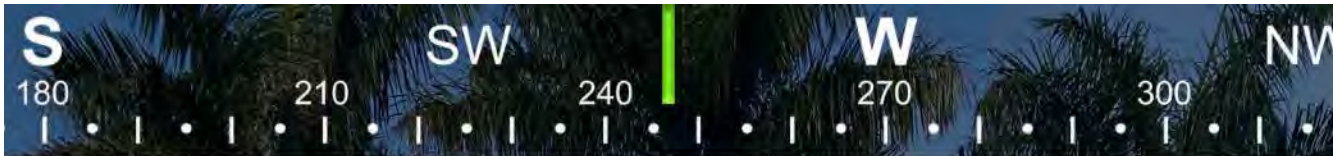
- Contractor has an excavator mounted on a barge staged in Canal BB-BB at station 8+00. Contractor also has a push boat, a support boat, and a hopper staged in Canal CC-CC at station 2+00. In addition, Contractor has a long-reach excavator, a front end loader, a water tank, and two fuel cubes staged on the property located at 1300 Curlew Avenue, Naples, FL, 34102.
- Push boat used to transport mechanic to barge to replace a DEF filter on 323 excavator.
- Contractor installed turbidity curtain across the mouth of Canal BB-BB.
- Contractor used 323 excavator to check bottom elevations and grind rock between stations 8+00 and 10+00.
- Contractor used push boat to position barge as necessary for grinding rock.

Contractor(s) and Personnel										
#	Name	Type	#	Hrs.	Type	#	Hrs.	Type	#	Hrs.
1	Prime: Quality Enterprises	PM	0	0	Boat Captain	1	9	Mechanic	0	0
		Excavator Operator	1	9	Truck Driver	0	0	Assistant	1	9
		Technician	0	0	Superintendent	0	0	VP	0	0

Equipment					
Cont/ Sub #	Equipment ID	Description	# Pieces	# Used	Total Hours Used
1	N/A	Barge	1	1	9
1	CAT 323	Excavator	1	1	7
1	CAT 326	Excavator	1	0	0
1	02016	Front End Loader	1	0	0
1	FL6223TB	Push Boat	1	1	8
1	FL2474PP	Support Boat	1	0	0
1	N3758Z	Fuel Truck	0	0	0
1	P9457E	Water Truck	0	0	0
1	725RZM	Water Tank	0	0	0
1	Z67EAZ	Small Dump truck	0	0	0
1	PB727E	Dump truck	0	0	0
1	MB28DQ	Dump truck	0	0	0
1	MB26DQ	Utility Truck	0	0	0
1	DRHS18	Utility Truck	0	0	0
1	N9524Z	Transport Truck	0	0	0

Visitors			
Name	Company	Hours at Job Site	
		From:	To:

Inspector Name and Position	Hours at Job Site/Office		Total Hours
Sam Boyd, EIT	From: 8:30 AM	To: 5:30 PM	9.0



☀ 247°SW (T) ☉ 26°8'14"N, 81°47'16"W ±32ft ▲ 8ft



Utility truck on site at 1300 Curlew Avenue



☀ 353°N (T) ● 26°8'8"N, 81°47'16"W ±42ft ▲ 9ft



16 Mar 2022, 09:12:42

Turbidity curtain across the mouth of Canal BB-BB



☉ 316°NW (T) ● 26°8'8"N, 81°47'7"W ±13ft ▲ 10ft



16 Mar 2022, 09:17:13

323 excavator grinding rock at station 8+00



☉ 347°N (T) ☉ 26°8'8"N, 81°47'7"W ±16ft ▲ 8ft



16 Mar 2022, 10:48:33

323 excavator lifting spud to allow push boat to mobilize barge at station 9+00



☀ 299°NW (T) ● 26°8'8"N, 81°47'7"W ±13ft ▲ 7ft



16 Mar 2022, 11:13:34

323 excavator grinding rock at station 9+50



DAILY REPORT OF CONSTRUCTION
 21-036 EAST NAPLES BAY
 DREDGING AND ROCK REMOVAL PROJECT



Date: 03/17/2022			
Inspectors: SB	Stantec PIN: 2028113191	Accidents <input type="checkbox"/> Yes <input checked="" type="checkbox"/> No	
Day of Week: Thursday	Contract Day: 151/365	Week: 22	Accident Report #: N/A
High Temp (°F): 84°F	AM Conditions: Sunny	PM Conditions: Sunny	High Tide: 1:46 PM +2.4'
Low Temp (°F): 71°F	Wind: 1 mph	Wind: 9 mph	Low Tide: 7:45 AM -0.2'
Canal Worked In: BB-BB	Stations Worked Between:	9+50 to 11+50	

General

#1 – Prime Contractor – Quality Enterprises:

- Contractor has an excavator mounted on a barge staged in Canal BB-BB at station 11+00. Contractor also has a push boat, a support boat, and a hopper staged in Canal CC-CC at station 2+00. In addition, Contractor has a long-reach excavator, a front end loader, a water tank, and two fuel cubes staged on the property located at 1300 Curlew Avenue, Naples, FL, 34102.
- Contractor installed turbidity curtain across the mouth of Canal BB-BB.
- Contractor used 323 excavator to check bottom elevations and remove 3 hoppers of material between stations 9+50 and 11+50.
- Contractor used push boat to position barge as necessary for removing material.
- Contractor used push boat to transport hopper from canal BB-BB to canal CC-CC station 1+50.
- Contractor used 326 excavator to transfer 3 hoppers of material from hopper to dewatering site at 1300 Curlew Avenue.
- Contractor used support boat to open and close turbidity curtain as necessary for transporting hopper.

Contractor(s) and Personnel										
#	Name	Type	#	Hrs.	Type	#	Hrs.	Type	#	Hrs.
1	Prime: Quality Enterprises	PM	0	0	Boat Captain	1	9	Mechanic	0	0
		Excavator Operator	2	9	Truck Driver	0	0	Assistant	1	9
		Technician	0	0	Superintendent	0	0	VP	0	0

Equipment					
Cont/ Sub #	Equipment ID	Description	# Pieces	# Used	Total Hours Used
1	N/A	Barge	1	1	7
1	CAT 323	Excavator	1	1	7
1	CAT 326	Excavator	1	1	4
1	02016	Front End Loader	1	0	0
1	FL6223TB	Push Boat	1	1	7
1	FL2474PP	Support Boat	1	1	3
1	N3758Z	Fuel Truck	0	0	0
1	P9457E	Water Truck	0	0	0
1	725RZM	Water Tank	0	0	0
1	Z67EAZ	Small Dump truck	0	0	0
1	PB727E	Dump truck	0	0	0
1	MB28DQ	Dump truck	0	0	0
1	MB26DQ	Utility Truck	0	0	0
1	DRHS18	Utility Truck	0	0	0
1	N9524Z	Transport Truck	0	0	0

Visitors			
Name	Company	Hours at Job Site	
		From:	To:

Inspector Name and Position	Hours at Job Site/Office		Total Hours
Sam Boyd, EIT	From: 8:30 AM	To: 4:30 PM	8.0



☀ 262°W (T) ● 26°8'9"N, 81°47'4"W ±22ft ▲ 9ft



17 Mar 2022, 08:47:04

323 excavator lifting spud to allow push boat to mobilize barge at station 11+00

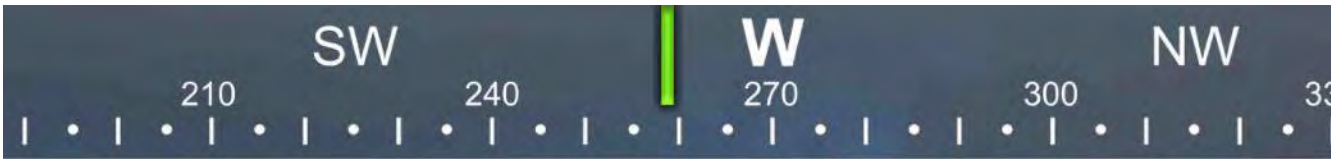


☀ 271°W (T) ● 26°8'9"N, 81°47'4"W ±45ft ▲ 9ft



17 Mar 2022, 08:44:44

323 excavator removing material at station 11+50



☉ 259°W (T) ● 26°8'9"N, 81°47'4"W ±101ft ▲ 8ft



17 Mar 2022, 08:49:47

323 excavator removing material at station 11+50



☉ 49°NE (T) ☉ 26°8'8"N, 81°47'6"W ±13ft ▲ 8ft



323 excavator transferring material to hopper at station 11+00



☀ 317°NW (T) ● 26°8'8"N, 81°47'7"W ±32ft ▲ 8ft



17 Mar 2022, 09:29:58

Push boat transporting barge from Canal BB-BB to Canal CC-CC

W 270 NW 300 N 330 0

☀ 318°NW (T) ☉ 26°8'8"N, 81°47'16"W ±16ft ▲ 8ft



Support boat opening turbidity curtain to allow push boat to exit Canal BB-BB with hopper



☉ 177°S (T) ● 26°8'14"N, 81°47'15"W ±19ft ▲ 8ft



17 Mar 2022, 09:55:45

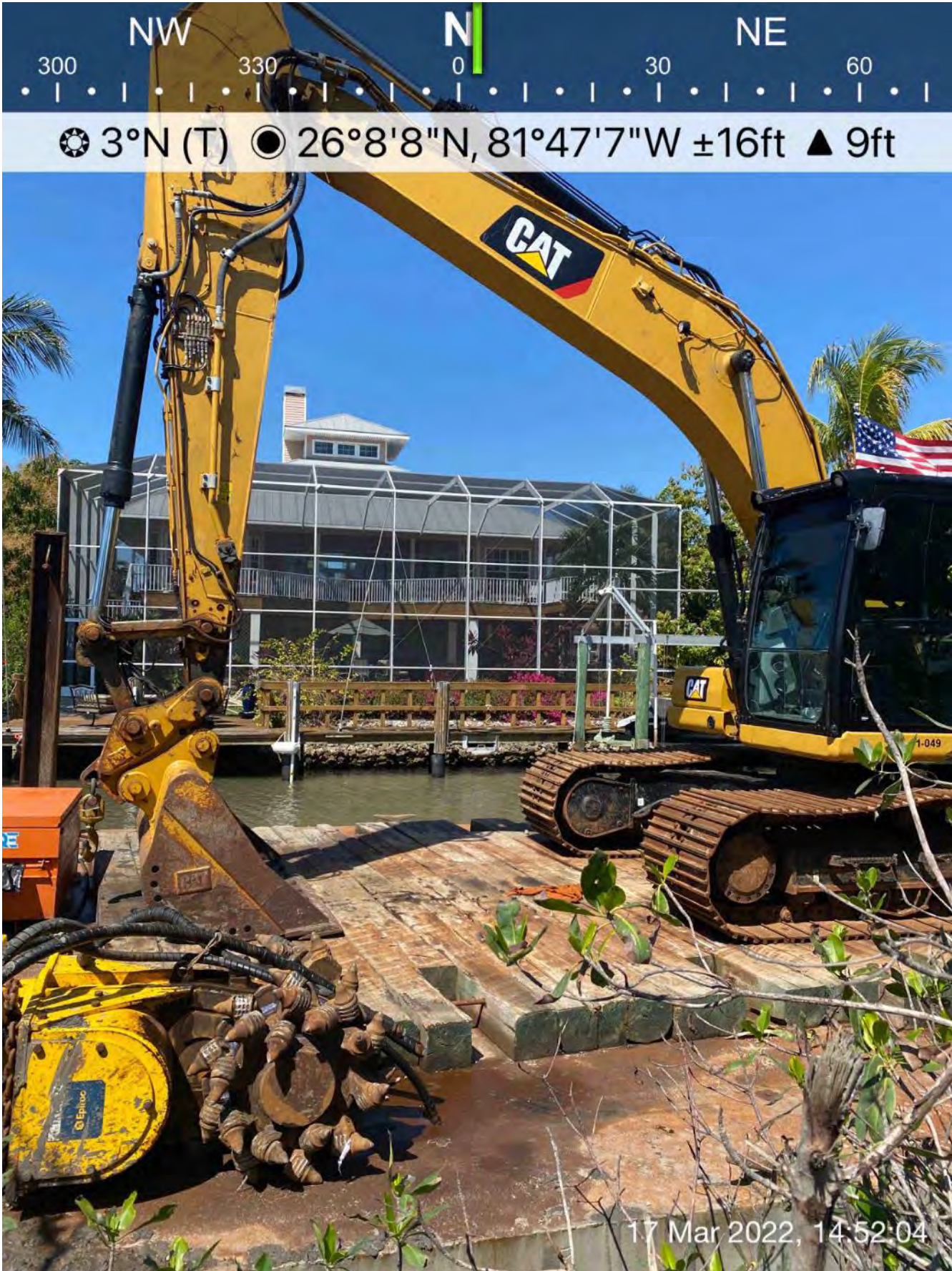
326 excavator transferring material from hopper to dewatering site at 1300 Curlew Avenue



☉ 49°NE (T) ☉ 26°8'8"N, 81°47'6"W ±13ft ▲ 8ft



323 excavator transferring material to hopper at station 10+50



323 excavator on barge at station 9+00

SE S SW
20 150 180 210 240

☉ 191°S (T) ☉ 26°8'14"N, 81°47'15"W ±19ft ▲ 9ft



Removed material at dewatering site at 1300 Curlew Avenue



DAILY REPORT OF CONSTRUCTION
 21-036 EAST NAPLES BAY
 DREDGING AND ROCK REMOVAL PROJECT



Date: 03/18/2022			
Inspectors: SB	Stantec PIN: 2028113191		Accidents <input type="checkbox"/> Yes <input checked="" type="checkbox"/> No
Day of Week: Friday	Contract Day: 152/365	Week: 22	Accident Report #: N/A
High Temp (°F): 88°F	AM Conditions: Sunny	PM Conditions: Sunny	High Tide: 2:08 PM +2.5'
Low Temp (°F): 68°F	Wind: 5 mph	Wind: 14 mph	Low Tide: 8:18 AM +0.0'
Canal Worked In: BB-BB	Stations Worked Between:	9+50 to 10+50	

General
<p>#1 – Prime Contractor – Quality Enterprises:</p> <ul style="list-style-type: none"> • Contractor has an excavator mounted on a barge staged in Canal BB-BB at station 10+00. Contractor also has a push boat, a support boat, and a hopper staged in Canal CC-CC at station 2+00. In addition, Contractor has a long-reach excavator, a front end loader, a water tank, and two fuel cubes staged on the property located at 1300 Curlew Avenue, Naples, FL, 34102. • Contractor installed turbidity curtain across the mouth of Canal BB-BB. • Contractor used 323 excavator to check bottom elevations and remove 3 hoppers of material between stations 9+50 and 10+50. • Contractor used push boat to position barge as necessary for removing material. • Contractor used push boat to transport hopper from canal BB-BB to Canal CC-CC station 1+50. • Contractor used 326 excavator to transfer 3 hoppers of material from hopper to dewatering site at 1300 Curlew Avenue. • Contractor used support boat to open and close turbidity curtain as necessary for transporting hopper. • Contractor used push boat to transport barge and 323 excavator from Canal BB-BB to Canal CC-CC station 2+00.

Contractor(s) and Personnel										
#	Name	Type	#	Hrs.	Type	#	Hrs.	Type	#	Hrs.
1	Prime: Quality Enterprises	PM	0	0	Boat Captain	1	9	Mechanic	0	0
		Excavator Operator	2	9	Truck Driver	0	0	Assistant	1	9
		Technician	0	0	Superintendent	0	0	VP	0	0

Equipment					
Cont/ Sub #	Equipment ID	Description	# Pieces	# Used	Total Hours Used
1	N/A	Barge	1	1	8
1	CAT 323	Excavator	1	1	8
1	CAT 326	Excavator	1	1	4
1	02016	Front End Loader	1	0	0
1	FL6223TB	Push Boat	1	1	8
1	FL2474PP	Support Boat	1	1	3
1	N3758Z	Fuel Truck	0	0	0
1	P9457E	Water Truck	0	0	0
1	725RZM	Water Tank	0	0	0
1	Z67EAZ	Small Dump truck	0	0	0
1	PB727E	Dump truck	0	0	0
1	MB28DQ	Dump truck	0	0	0
1	MB26DQ	Utility Truck	0	0	0
1	DRHS18	Utility Truck	0	0	0
1	N9524Z	Transport Truck	0	0	0

Visitors			
Name	Company	Hours at Job Site	
		From:	To:

Inspector Name and Position	Hours at Job Site/Office		Total Hours
Sam Boyd, EIT	From: 7:30 AM	To: 3:30 PM	8.0

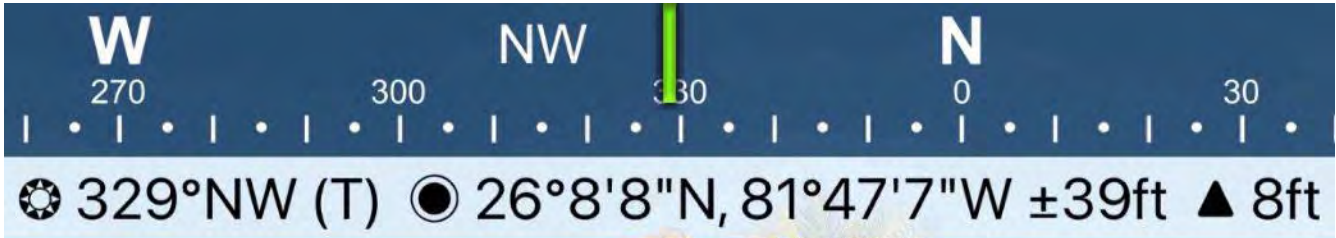


☀ 351°N (T) ● 26°8'8"N, 81°47'16"W ±13ft ▲ 13ft



18 Mar 2022, 08:14:34

Installing turbidity curtain across the mouth of Canal BB-BB with support boat



323 excavator removing material and transferring to hopper at station 10+50

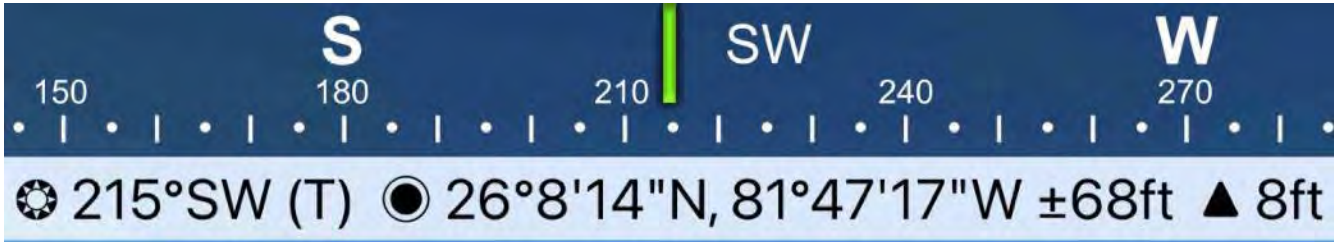


☀ 357°N (T) ● 26°8'8"N, 81°47'7"W ±29ft ▲ 9ft



18 Mar 2022, 08:21:16

323 excavator removing material at station 10+50



Push boat transporting full hopper of removed material from Canal BB-BB to Canal CC-CC

SE 150 S 180 SW 210 240

☀ 195°S (T) ☉ 26°8'14"N, 81°47'15"W ±13ft ▲ 8ft



326 excavator transferring material from hopper to dewatering site at 1300 Curlew Avenue



323 excavator removing material from station 10+00

W 240 270 300 330 N 0
299°NW (T) 26°8'9"N, 81°47'6"W ±13ft ▲ 8ft



18 Mar 2022, 10:52:15

323 excavator lifting spud to allow push boat to mobilize barge at station 10+00

E 90 SE 120 150 S 180
☀ 135°SE (T) ☉ 26°8'13"N, 81°47'16"W ±13ft ▲ 8ft



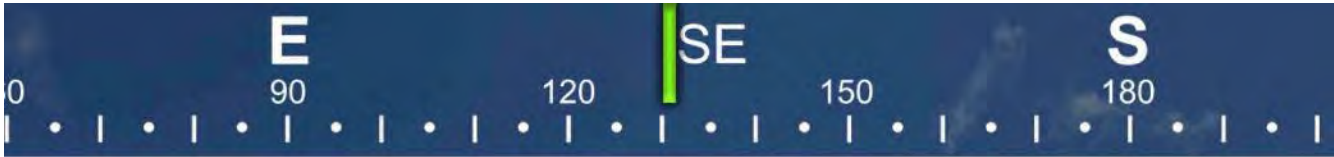
326 excavator transferring material from hopper to dewatering site at 1300 Curlew Avenue



☀ 7°N (T) ☉ 26°8'8"N, 81°47'7"W ±36ft ▲ 8ft



323 excavator removing material and transferring to hopper at station 9+50



☀ 131°SE (T) ● 26°8'13"N, 81°47'16"W ±13ft ▲ 11ft



326 excavator transferring material from hopper to dewatering site at 1300 Curlew Avenue