



WEEKLY SUMMARY REPORT – CONTRACT WEEK 20

21-036 EAST NAPLES BAY

DREDGING AND ROCK REMOVAL PROJECT



Date: 2/28/2022 to 3/4/2022			
Inspectors: Sam Boyd/Alan Bechok	Stantec PIN: 2028113191	Accidents <input type="checkbox"/> Yes <input checked="" type="checkbox"/> No	
Days of Week: Monday to Friday	Contract Days: 134 to 138	Total Days: 365	Accident Report #: N/A
Canal(s) Worked In: CC-CC/BB-BB	Stations Worked Between: 2+50 to 3+00 / 0+00 to 1+25		

General

Remarks

#1 – Prime Contractor – Quality Enterprises:

Monday 02-28-2022:

- Contractor’s equipment is staged in canal CC-CC at station 1+00; this equipment includes an excavator mounted on the barge. The contractor also had a hopper and a push boat staged in Canal CC-CC at station 1+50. Contractor also has a long-reach excavator, a front end loader, a water tank, and two fuel cubes staged on the property located at 1300 Curlew Avenue, Naples, FL, 34102.
- Contractor regraded and built up the sides of the dredged material stockpile at 1300 Curlew Avenue.
- Contractor installed turbidity curtain across the mouth of Canal CC-CC. Double curtains noted.
- Contractor worked on dredging for homeowner (1350 Curlew Ave, private contract) at boat lift location today (station 2+75). Contractor had to raise the boat lift (held by ratchet straps) so excavator bucket and grinder would be able to access the shallow areas.
- Contractor used 323 excavator (stick rover) to check bottom of canal elevations while removing high spots of hard material from station 2+75.
- Push boat was used to move barge, 323 excavator, and hopper as necessary for removing/grinding material.

Tuesday 03-01-2022:

- Contractor has an excavator mounted on a barge, a push boat, a support boat, and a hopper staged in Canal CC-CC at station 2+00. In addition, Contractor has a long-reach excavator, a front end loader, a water tank, and two fuel cubes staged on the property located at 1300 Curlew Avenue, Naples, FL, 34102.
- Contractor installed turbidity curtain across the mouth of Canal CC-CC.
- Contractor used support boat to remove I-beams on the boat lift at 1350 Curlew Avenue (stations 2+50 to 3+00).
- Contractor used 323 excavator to check elevations, grind rock, and remove material between stations 2+50 and 3+00. Contractor placed removed material in the hopper.
- Contractor used push boat to position barge as necessary for grinding and removing material, for transporting the hopper, and for attaching and removing the turbidity curtain.
- Contractor used 326 excavator to transfer one hopper of material from the hopper to the dewatering site at 1300 Curlew Avenue.
- Contractor used support boat to re-attach I-beams on the boat lift at 1350 Curlew Avenue (stations 2+50 to 3+00).
- Contractor used 326 excavator to lift small fuel cube from the southwest corner of 1300 Curlew Avenue to the



WEEKLY SUMMARY REPORT – CONTRACT WEEK 20

21-036 EAST NAPLES BAY

DREDGING AND ROCK REMOVAL PROJECT



barge. Fuel cube was used to refuel 323 excavator and transported back to 1300 Curlew Avenue with 326 excavator.

- Contractor used push boat to transport barge and 323 excavator from Canal CC-CC to Canal BB-BB (station 0+00).

Wednesday 03-02-2022:

- Contractor has an excavator mounted on a barge staged in Canal BB-BB at station 0+00. Contractor also has a push boat, a support boat, and a hopper staged in Canal CC-CC at station 2+00. In addition, Contractor has a long-reach excavator, a front end loader, a water tank, and two fuel cubes staged on the property located at 1300 Curlew Avenue, Naples, FL, 34102.
- Contractor installed turbidity curtain across the mouth of Canal BB-BB.
- Contractor used 323 excavator to grind rock between stations 0+00 and 1+00.
- Contractor used push boat to position barge as necessary for grinding rock.
- Contractor used support boat for extra transportation to and from the barge

Thursday 03-03-2022:

- Contractor has an excavator mounted on a barge staged in Canal BB-BB at station 0+50. Contractor also has a push boat, a support boat, and a hopper staged in Canal CC-CC at station 2+00. In addition, Contractor has a long-reach excavator, a front end loader, a water tank, and two fuel cubes staged on the property located at 1300 Curlew Avenue, Naples, FL, 34102.
- Contractor installed turbidity curtain across the mouth of Canal BB-BB.
- Contractor used 323 excavator to grind rock between stations 0+50 and 1+00.
- Contractor used push boat to position barge as necessary for grinding rock.
- Contractor used support boat for extra transportation to and from the barge.

Friday 03-04-2022:

- Contractor has an excavator mounted on a barge staged in Canal BB-BB at station 0+50. Contractor also has a push boat, a support boat, and a hopper staged in Canal CC-CC at station 2+00. In addition, Contractor has a long-reach excavator, a front end loader, a water tank, and two fuel cubes staged on the property located at 1300 Curlew Avenue, Naples, FL, 34102.
- Contractor installed turbidity curtain across the mouth of Canal BB-BB.
- Contractor used 323 excavator to grind rock between stations 0+50 and 1+25.
- Contractor used push boat to position barge as necessary for grinding rock.
- Contractor used support boat for extra transportation to and from the barge.
- Contractor used 326 excavator to transport fuel cube from southwest corner of 1300 Curlew Avenue to push boat. Push boat transported fuel cube to barge at station 0+50 where it was used to refuel the 323 excavator. Push boat transported fuel cube back to Canal CC-CC and 326 excavator transported it back to the southwest corner of 1300 Curlew Avenue.



WEEKLY SUMMARY REPORT – CONTRACT WEEK 20
21-036 EAST NAPLES BAY
DREDGING AND ROCK REMOVAL PROJECT



- Contractor used push boat to transport barge from Canal BB-BB to Canal CC-CC (station 2+00).
- Contractor used water tank to clean barge, hopper, and 323 excavator.

Note: Daily reports with pictures attached for the week.



DAILY REPORT OF CONSTRUCTION
 21-036 EAST NAPLES BAY
 DREDGING AND ROCK REMOVAL PROJECT



Date: 2/28/2022			
Inspectors: AB	Stantec PIN: 2028113191	Accidents <input type="checkbox"/> Yes <input checked="" type="checkbox"/> No	
Day of Week: Monday	Contract Day: 134/365	Week: 20	Accident Report #: N/A
High Temp (°F): 78°F	AM Conditions: Sunny	PM Conditions: Sunny	High Tide: 12:32 AM +2.0 ft.
Low Temp (°F): 70°F	Wind: 0-15 mph	Wind: 5-15 mph	Low Tide: 2:28 PM -0.7 ft.
Canal Worked In: CC-CC	Stations Worked Between:	2+75 (approx.)	

General	
#1 – Prime Contractor – Quality Enterprises:	
<ul style="list-style-type: none"> Contractor’s equipment is staged in canal CC-CC at station 1+00; this equipment includes an excavator mounted on the barge. The contractor also had a hopper and a push boat staged in Canal CC-CC at station 1+50. Contractor also has a long-reach excavator, a front end loader, a water tank, and two fuel cubes staged on the property located at 1300 Curlew Avenue, Naples, FL, 34102. Contractor regraded and built up the sides of the dredged material stockpile at 1300 Curlew Avenue. Contractor installed turbidity curtain across the mouth of Canal CC-CC. Double curtains noted. Contractor worked on dredging for homeowner (1350 Curlew Ave, private contract) at boat lift location today (station 2+75). Contractor had to raise the boat lift (held by ratchet straps) so excavator bucket and grinder would be able to access the shallow areas. Contractor used 323 excavator (stick rover) to check bottom of canal elevations while removing high spots of hard material from station 2+75. Push boat was used to move barge, 323 excavator, and hopper as necessary for removing/grinding material. 	

Contractor(s) and Personnel										
#	Name	Type	#	Hrs.	Type	#	Hrs.	Type	#	Hrs.
1	Prime: Quality Enterprises	PM	1	2	Boat Captain	1	9	Foreman	0	0
		Excavator Operator	1	9	Truck Driver	0	0	Assistant	1	9
		Technician	0	0	Superintendent	0	0	VP	0	0

Equipment					
Cont/ Sub #	Equipment ID	Description	# Pieces	# Used	Total Hours Used
1	N/A	Barge	1	1	8
1	CAT 323	Excavator	1	1	8
1	CAT 326	Excavator	1	1	1
1	Volvo	Front End Loader	1	0	0
1	FL6223TB	Push Boat	1	1	4
1	FL2474PP	Support Boat	1	1	1
1	N6143X	Fuel Truck	0	0	0
1	P9457E	Water Truck	0	0	0
1	725RZM	Water Tank	1	0	0
1	Z67EAZ	Dump truck	0	0	0
1	MB38DQ	Utility Truck	0	0	0
1	5178CR	Transport Truck	0	0	0

Visitors			
Name	Company	Hours at Job Site	
		From:	To:

Inspector Name and Position	Hours at Job Site/Office		Total Hours
Alan Bechok CPII	From: 8:00 AM	To: 2:00 PM (+3 hr.)	9



Removed material at dewatering site at 1300 Curlew Avenue



323 excavator grinding rock at station 2+75



323 excavator on barge with Epiroc grinder at station 2+50



Installing turbidity curtain across the mouth of Canal CC-CC



Turbidity curtain across the mouth of Canal CC-CC



323 excavator grinding rock at station 2+75



DAILY REPORT OF CONSTRUCTION
 21-036 EAST NAPLES BAY
 DREDGING AND ROCK REMOVAL PROJECT



Date: 03/01/2022			
Inspectors: SB	Stantec PIN: 2028113191	Accidents <input type="checkbox"/> Yes <input checked="" type="checkbox"/> No	
Day of Week: Tuesday	Contract Day: 135/365	Week: 20	Accident Report #: N/A
High Temp (°F): 77°F	AM Conditions: Sunny	PM Conditions: Sunny	High Tide: 12:53 PM +2.1'
Low Temp (°F): 62°F	Wind: 4 mph	Wind: 13 mph	Low Tide: 6:20 AM -0.7'
Canal Worked In: CC-CC	Stations Worked Between:	2+50 to 3+00	

General
<p>#1 – Prime Contractor – Quality Enterprises:</p> <ul style="list-style-type: none"> • Contractor has an excavator mounted on a barge, a push boat, a support boat, and a hopper staged in Canal CC-CC at station 2+00. In addition, Contractor has a long-reach excavator, a front end loader, a water tank, and two fuel cubes staged on the property located at 1300 Curlew Avenue, Naples, FL, 34102. • Contractor installed turbidity curtain across the mouth of Canal CC-CC. • Contractor used support boat to remove I-beams on the boat lift at 1350 Curlew Avenue (stations 2+50 to 3+00). • Contractor used 323 excavator to check elevations, grind rock, and remove material between stations 2+50 and 3+00. Contractor placed removed material in the hopper. • Contractor used push boat to position barge as necessary for grinding and removing material, for transporting the hopper, and for attaching and removing the turbidity curtain. • Contractor used 326 excavator to transfer one hopper of material from the hopper to the dewatering site at 1300 Curlew Avenue. • Contractor used support boat to re-attach I-beams on the boat lift at 1350 Curlew Avenue (stations 2+50 to 3+00). • Contractor used 326 excavator to lift small fuel cube from the southwest corner of 1300 Curlew Avenue to the barge. Fuel cube was used to refuel 323 excavator and transported back to 1300 Curlew Avenue with 326 excavator. • Contractor used push boat to transport barge and 323 excavator from Canal CC-CC to Canal BB-BB (station 0+00).

Contractor(s) and Personnel										
#	Name	Type	#	Hrs.	Type	#	Hrs.	Type	#	Hrs.
1	Prime: Quality Enterprises	PM	1	1	Boat Captain	1	9	Mechanic	0	0
		Excavator Operator	1	9	Truck Driver	0	0	Assistant	1	9
		Technician	0	0	Superintendent	1	9	VP	0	0

Equipment					
Cont/ Sub #	Equipment ID	Description	# Pieces	# Used	Total Hours Used
1	N/A	Barge	1	1	9
1	CAT 323	Excavator	1	1	6
1	CAT 326	Excavator	1	1	2
1	02016	Front End Loader	1	0	0
1	FL6223TB	Push Boat	1	1	9
1	FL2474PP	Support Boat	1	1	4
1	N3758Z	Fuel Truck	0	0	0
1	P9457E	Water Truck	0	0	0
1	725RZM	Water Tank	1	0	0
1	Z67EAZ	Small Dump truck	0	0	0
1	MB35DQ	Dump truck	0	0	0
1	MB28DQ	Dump truck	0	0	0
1	MB26DQ	Utility Truck	0	0	0
1	DRHS18	Utility Truck	0	0	0
1	N9524Z	Transport Truck	0	0	0

Visitors			
Name	Company	Hours at Job Site	
		From:	To:

Inspector Name and Position	Hours at Job Site/Office		Total Hours
Sam Boyd, EIT	From: 8:00 AM	To: 4:30 PM	8.5

SE 150 S 180 SW 210 240
☀ 196°S (T) ☉ 26°8'13"N, 81°47'15"W ±13ft ▲ 12ft



323 excavator lifting spud to allow push boat to mobilize barge at station 2+00

SW W NW
210 240 270 300 330

☉ 270°W (T) ☉ 26°8'13"N, 81°47'15"W ±13ft ▲ 9ft



323 with Epiroc grinder at station 2+75

SW W NW
210 240 270 300 330

☀ 273°W (T) ● 26°8'13"N, 81°47'15"W ±13ft ▲ 9ft



01 Mar 2022, 08:34:04

323 excavator grinding rock at station 2+75



Turbidity curtain across the mouth of Canal CC-CC



☀ 140°SE (T) ☉ 26°8'13"N, 81°47'15"W ±42ft ▲ 8ft



323 excavator removing material from station 2+50 and transferring to hopper

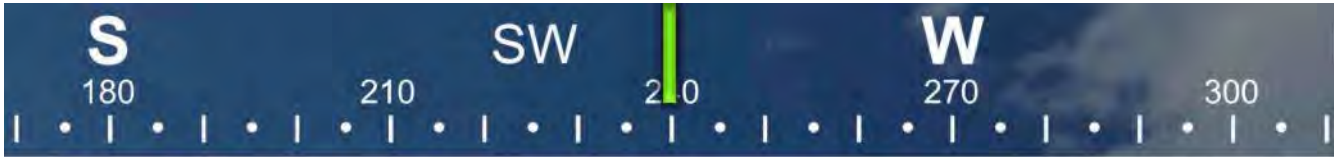
SE S SW
120 150 180 210 240

☀ 186°S (T) ● 26°8'13"N, 81°47'15"W ±29ft ▲ 8ft



01 Mar 2022, 10:50:08

323 excavator removing material from station 2+50 and transferring to hopper



☉ 240°SW (T) ☉ 26°8'13"N, 81°47'15"W ±32ft ▲ 8ft



326 excavator transferring removed material from hopper to dewatering site at 1300 Curlew Avenue



326 excavator transferring removed material from hopper to dewatering site at 1300 Curlew Avenue



☉ 129°SE (T) ☉ 26°8'13"N, 81°47'16"W ±29ft ▲ 9ft



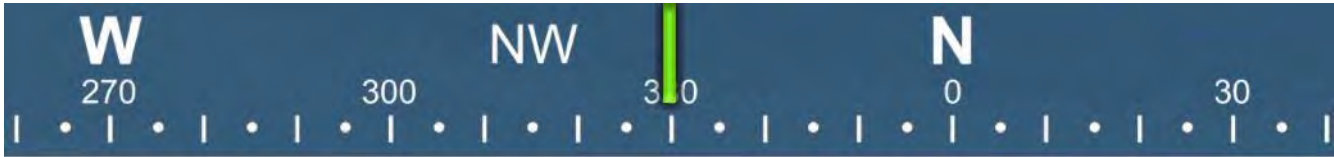
326 excavator transferring fuel cube to barge for refueling 323 excavator

S 180 SW 210 240 W 270 300 NW
☀ 248°SW (T) ☉ 26°8'13"N, 81°47'16"W ±13ft ▲ 10ft



01 Mar 2022, 14:30:16

Push boat transporting hopper and barge from Canal CC-CC to Canal BB-BB



☉ 330°NW (T) ● 26°8'7"N, 81°47'15"W ±19ft ▲ 8ft



01 Mar 2022, 15:35:22

323 excavator and barge in Canal BB-BB at station 0+00



DAILY REPORT OF CONSTRUCTION
 21-036 EAST NAPLES BAY
 DREDGING AND ROCK REMOVAL PROJECT



Date: 03/02/2022			
Inspectors: SB	Stantec PIN: 2028113191		Accidents <input type="checkbox"/> Yes <input checked="" type="checkbox"/> No
Day of Week: Wednesday	Contract Day: 136/365	Week: 20	Accident Report #: N/A
High Temp (°F): 81°F	AM Conditions: Sunny	PM Conditions: Cloudy	High Tide: 1:16 PM +2.2'
Low Temp (°F): 61°F	Wind: 9 mph	Wind: 11 mph	Low Tide: 7:02 AM -0.5'
Canal Worked In: BB-BB	Stations Worked Between:	0+00 to 1+00	

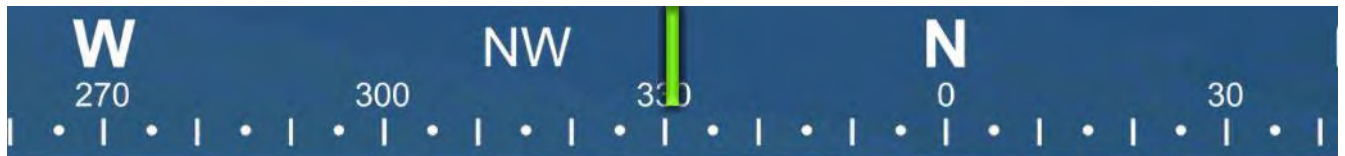
General	
#1 – Prime Contractor – Quality Enterprises:	
<ul style="list-style-type: none"> • Contractor has an excavator mounted on a barge staged in Canal BB-BB at station 0+00. Contractor also has a push boat, a support boat, and a hopper staged in Canal CC-CC at station 2+00. In addition, Contractor has a long-reach excavator, a front end loader, a water tank, and two fuel cubes staged on the property located at 1300 Curlew Avenue, Naples, FL, 34102. • Contractor installed turbidity curtain across the mouth of Canal BB-BB. • Contractor used 323 excavator to grind rock between stations 0+00 and 1+00. • Contractor used push boat to position barge as necessary for grinding rock. • Contractor used support boat for extra transportation to and from the barge 	

Contractor(s) and Personnel										
#	Name	Type	#	Hrs.	Type	#	Hrs.	Type	#	Hrs.
1	Prime: Quality Enterprises	PM	0	0	Boat Captain	1	9	Mechanic	0	0
		Excavator Operator	1	9	Truck Driver	0	0	Assistant	1	9
		Technician	0	0	Superintendent	1	9	VP	0	0

Equipment					
Cont/ Sub #	Equipment ID	Description	# Pieces	# Used	Total Hours Used
1	N/A	Barge	1	1	9
1	CAT 323	Excavator	1	1	9
1	CAT 326	Excavator	1	0	0
1	02016	Front End Loader	1	0	0
1	FL6223TB	Push Boat	1	1	4
1	FL2474PP	Support Boat	1	1	2
1	N3758Z	Fuel Truck	0	0	0
1	P9457E	Water Truck	0	0	0
1	725RZM	Water Tank	1	0	0
1	Z67EAZ	Small Dump truck	0	0	0
1	MB35DQ	Dump truck	0	0	0
1	MB28DQ	Dump truck	0	0	0
1	MB26DQ	Utility Truck	0	0	0
1	DRHS18	Utility Truck	0	0	0
1	N9524Z	Transport Truck	0	0	0

Visitors			
Name	Company	Hours at Job Site	
		From:	To:

Inspector Name and Position	Hours at Job Site/Office		Total Hours
Sam Boyd, EIT	From: 8:00 AM	To: 4:30 PM	8.5



☉ 331°NW (T) ● 26°8'6"N, 81°47'16"W ±13ft ▲ 9ft



323 excavator grinding rock at station 0+00



323 excavator grinding rock at station 0+00



☀ 315°NW (T) ● 26°8'8"N, 81°47'16"W ±59ft ▲ 8ft



02 Mar 2022, 10:04:44

323 excavator grinding rock at station 0+50



☉ 322°NW (T) ● 26°8'8"N, 81°47'16"W ±13ft ▲ 9ft



323 excavator grinding rock at station 1+00



DAILY REPORT OF CONSTRUCTION
 21-036 EAST NAPLES BAY
 DREDGING AND ROCK REMOVAL PROJECT



Date: 03/03/2022			
Inspectors: SB	Stantec PIN: 2028113191		Accidents <input type="checkbox"/> Yes <input checked="" type="checkbox"/> No
Day of Week: Thursday	Contract Day: 137/365	Week: 20	Accident Report #: N/A
High Temp (°F): 82°F	AM Conditions: Sunny	PM Conditions: Sunny	High Tide: 1:41 PM +2.3'
Low Temp (°F): 60°F	Wind: 5 mph	Wind: 10 mph	Low Tide: 7:40 AM -0.3'
Canal Worked In: BB-BB	Stations Worked Between:	0+50 to 1+00	

General	
#1 – Prime Contractor – Quality Enterprises:	
<ul style="list-style-type: none"> • Contractor has an excavator mounted on a barge staged in Canal BB-BB at station 0+50. Contractor also has a push boat, a support boat, and a hopper staged in Canal CC-CC at station 2+00. In addition, Contractor has a long-reach excavator, a front end loader, a water tank, and two fuel cubes staged on the property located at 1300 Curlew Avenue, Naples, FL, 34102. • Contractor installed turbidity curtain across the mouth of Canal BB-BB. • Contractor used 323 excavator to grind rock between stations 0+50 and 1+00. • Contractor used push boat to position barge as necessary for grinding rock. • Contractor used support boat for extra transportation to and from the barge. 	

Contractor(s) and Personnel										
#	Name	Type	#	Hrs.	Type	#	Hrs.	Type	#	Hrs.
1	Prime: Quality Enterprises	PM	1	1	Boat Captain	1	9	Mechanic	0	0
		Excavator Operator	1	9	Truck Driver	0	0	Assistant	1	9
		Technician	0	0	Superintendent	1	9	VP	1	1

Equipment					
Cont/ Sub #	Equipment ID	Description	# Pieces	# Used	Total Hours Used
1	N/A	Barge	1	1	9
1	CAT 323	Excavator	1	1	9
1	CAT 326	Excavator	1	0	0
1	02016	Front End Loader	1	0	0
1	FL6223TB	Push Boat	1	1	4
1	FL2474PP	Support Boat	1	1	2
1	N3758Z	Fuel Truck	0	0	0
1	P9457E	Water Truck	0	0	0
1	725RZM	Water Tank	1	0	0
1	Z67EAZ	Small Dump truck	0	0	0
1	MB35DQ	Dump truck	0	0	0
1	MB28DQ	Dump truck	0	0	0
1	MB26DQ	Utility Truck	0	0	0
1	DRHS18	Utility Truck	0	0	0
1	N9524Z	Transport Truck	0	0	0

Visitors			
Name	Company	Hours at Job Site	
		From:	To:
Joe	Quality Enterprises	2:00 pm	3:00 pm

Inspector Name and Position	Hours at Job Site/Office		Total Hours
Sam Boyd, EIT	From: 8:30 AM	To: 4:30 PM	8.0

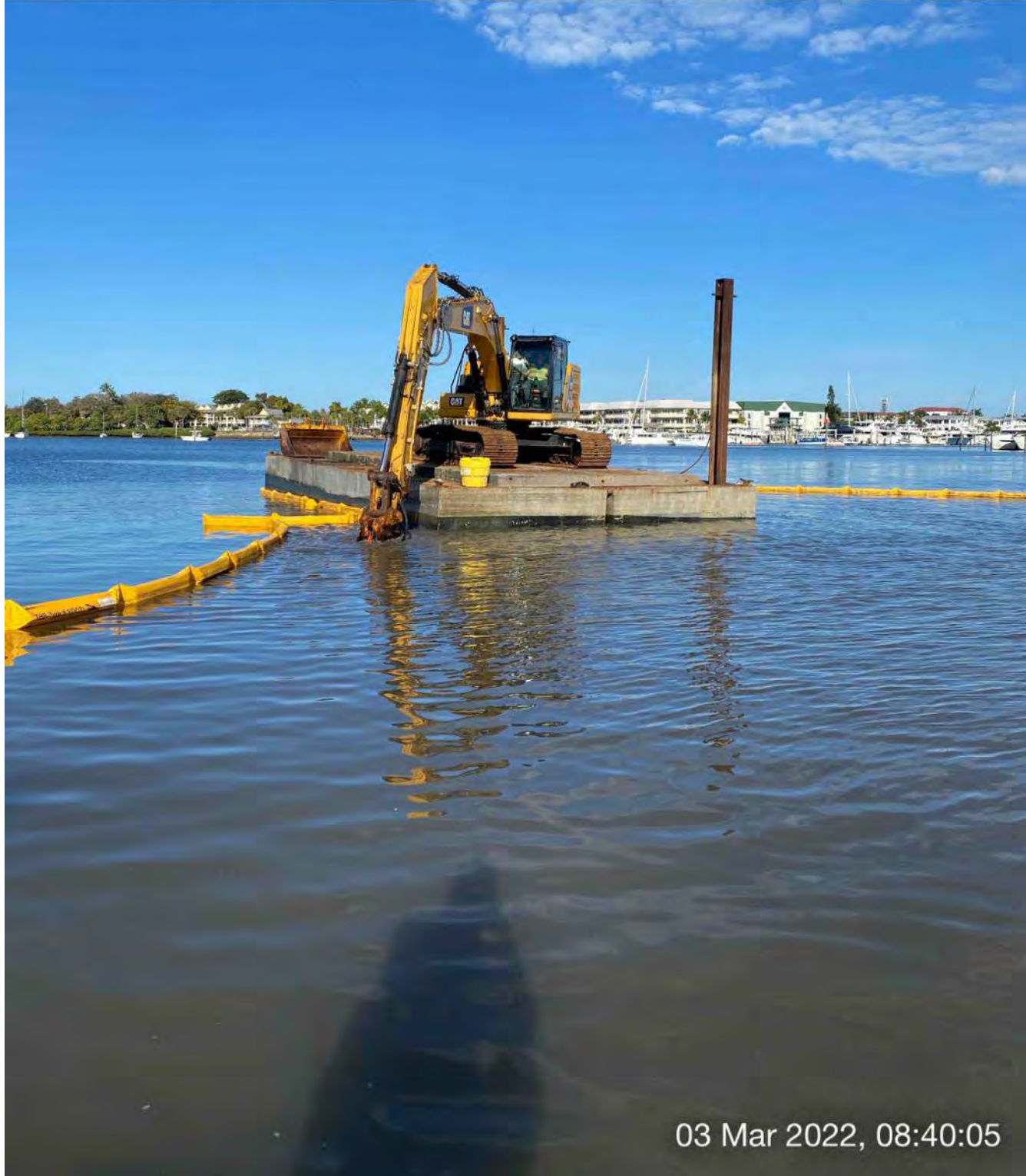
SW 240 W 270 NW 300 330

☉ 287°W (T) ☉ 26°8'8"N, 81°47'15"W ±32ft ▲ 9ft



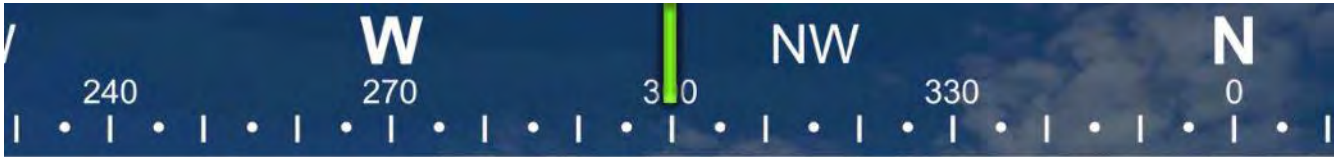
323 excavator grinding rock at station 0+50

SW 240 W 270 NW 330 N 0
☀ 292°W (T) ☉ 26°8'8"N, 81°47'16"W ±13ft ▲ 11ft



03 Mar 2022, 08:40:05

323 excavator grinding rock at station 0+50



☉ 300°NW (T) ● 26°8'8"N, 81°47'16"W ±26ft ▲ 9ft



03 Mar 2022, 08:46:45

323 excavator grinding rock at station 0+50

W 270 NW 300 N 0 NE 30

☀ 333°NW (T) ☉ 26°8'8"N, 81°47'16"W ±13ft ▲ 8ft



323 excavator grinding rock at station 1+00



DAILY REPORT OF CONSTRUCTION
 21-036 EAST NAPLES BAY
 DREDGING AND ROCK REMOVAL PROJECT



Date: 03/04/2022			
Inspectors: SB	Stantec PIN: 2028113191		Accidents <input type="checkbox"/> Yes <input checked="" type="checkbox"/> No
Day of Week: Friday	Contract Day: 138/365	Week: 20	Accident Report #: N/A
High Temp (°F): 83°F	AM Conditions: Sunny	PM Conditions: Cloudy	High Tide: 2:08 PM +2.4'
Low Temp (°F): 63°F	Wind: 6 mph	Wind: 13 mph	Low Tide: 8:17 AM -0.1'
Canal Worked In: BB-BB	Stations Worked Between:	0+50 to 1+25	

General

#1 – Prime Contractor – Quality Enterprises:

- Contractor has an excavator mounted on a barge staged in Canal BB-BB at station 0+50. Contractor also has a push boat, a support boat, and a hopper staged in Canal CC-CC at station 2+00. In addition, Contractor has a long-reach excavator, a front end loader, a water tank, and two fuel cubes staged on the property located at 1300 Curlew Avenue, Naples, FL, 34102.
- Contractor installed turbidity curtain across the mouth of Canal BB-BB.
- Contractor used 323 excavator to grind rock between stations 0+50 and 1+25.
- Contractor used push boat to position barge as necessary for grinding rock.
- Contractor used support boat for extra transportation to and from the barge.
- Contractor used 326 excavator to transport fuel cube from southwest corner of 1300 Curlew Avenue to push boat. Push boat transported fuel cube to barge at station 0+50 where it was used to refuel the 323 excavator. Push boat transported fuel cube back to Canal CC-CC and 326 excavator transported it back to the southwest corner of 1300 Curlew Avenue.
- Contractor used push boat to transport barge from Canal BB-BB to Canal CC-CC (station 2+00).
- Contractor used water tank to clean barge, hopper, and 323 excavator.

Contractor(s) and Personnel										
#	Name	Type	#	Hrs.	Type	#	Hrs.	Type	#	Hrs.
1	Prime: Quality Enterprises	PM	0	0	Boat Captain	1	9	Mechanic	0	0
		Excavator Operator	1	6	Truck Driver	0	0	Assistant	1	9
		Technician	0	0	Superintendent	1	9	VP	0	0

Equipment					
Cont/ Sub #	Equipment ID	Description	# Pieces	# Used	Total Hours Used
1	N/A	Barge	1	1	7
1	CAT 323	Excavator	1	1	7
1	CAT 326	Excavator	1	0	0
1	02016	Front End Loader	1	0	0
1	FL6223TB	Push Boat	1	1	5
1	FL2474PP	Support Boat	1	1	1
1	N3758Z	Fuel Truck	0	0	0
1	P9457E	Water Truck	0	0	0
1	725RZM	Water Tank	1	0	0
1	Z67EAZ	Small Dump truck	0	0	0
1	MB35DQ	Dump truck	0	0	0
1	MB28DQ	Dump truck	0	0	0
1	MB26DQ	Utility Truck	0	0	0
1	DRHS18	Utility Truck	0	0	0
1	N9524Z	Transport Truck	0	0	0

Visitors			
Name	Company	Hours at Job Site	
		From:	To:

Inspector Name and Position	Hours at Job Site/Office		Total Hours
Sam Boyd, EIT	From: 7:15 AM	To: 3:15 PM	8.0



☉ 312°NW (T) ☉ 26°8'8"N, 81°47'16"W ±13ft ▲ 8ft



04 Mar 2022, 07:23:30

323 excavator with Epiroc grinder on barge at station 0+50



☉ 326°NW (T) ☉ 26°8'8"N, 81°47'16"W ±29ft ▲ 8ft



04 Mar 2022, 07:24:01

323 excavator grinding rock at station 0+00

W
270

NW

N
0

300

330

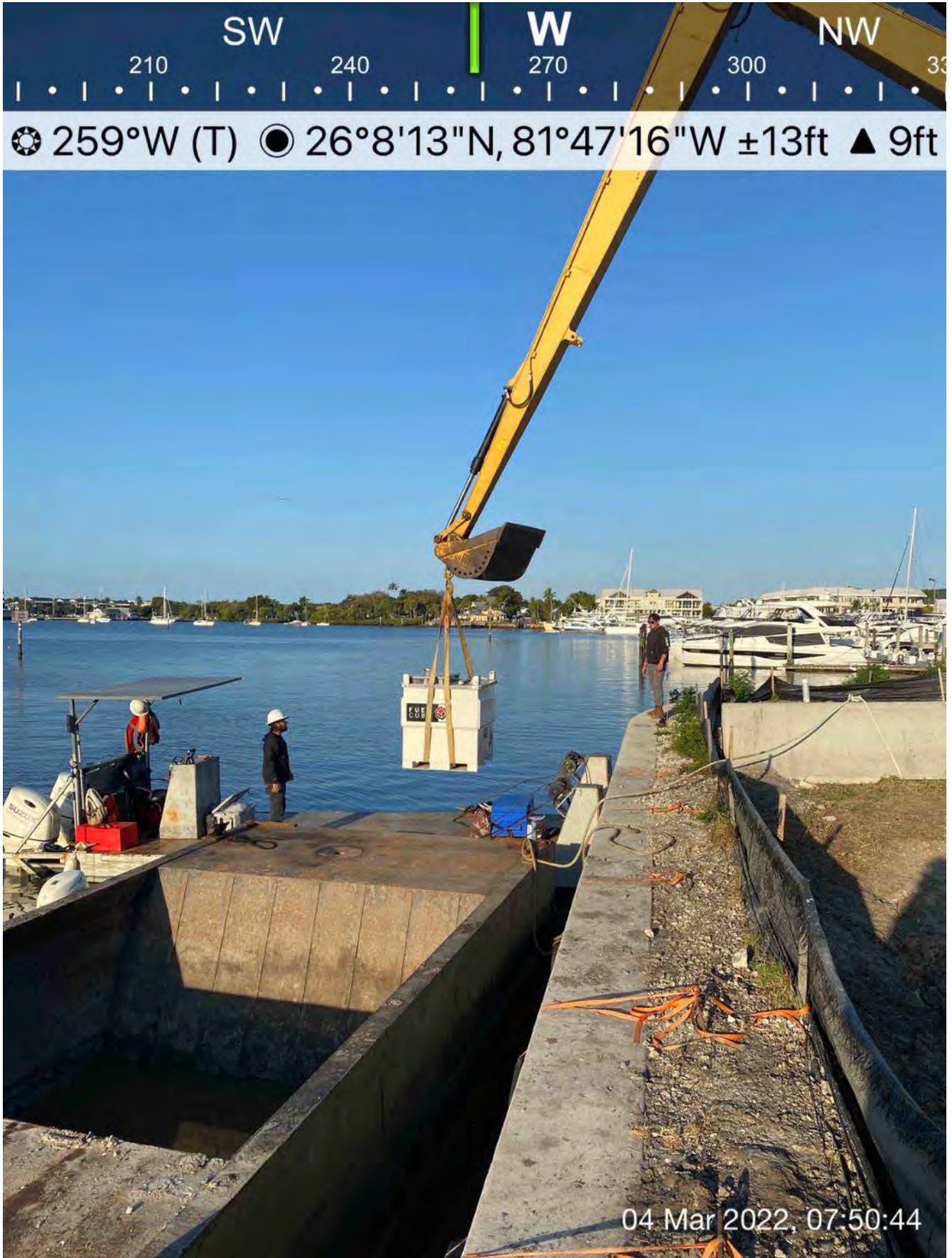
30

☀ 331°NW (T) ● 26°8'8"N, 81°47'16"W ±13ft ▲ 7ft



04 Mar 2022, 07:25:46

323 excavator grinding rock at station 0+00



326 excavator transporting fuel cube from 1300 Curlew Avenue to push boat



323 excavator grinding rock at station 1+00



☉ 344°N (T) ☉ 26°8'8"N, 81°47'16"W ±19ft ▲ 8ft



04 Mar 2022, 11:11:02

323 excavator with Epiroc grinder on barge at station 1+00

SE S SW
20 150 180 210 240

☉ 191°S (T) ☉ 26°8'13"N, 81°47'16"W ±13ft ▲ 8ft



04 Mar 2022, 13:58:28

Push boat transporting barge and 323 excavator from Canal BB-BB to Canal CC-CC