



WEEKLY SUMMARY REPORT – CONTRACT WEEK 19

21-036 EAST NAPLES BAY

DREDGING AND ROCK REMOVAL PROJECT



Date: 2/21/2022 to 2/25/2022			
Inspectors: Sam Boyd/Alan Bechok	Stantec PIN: 2028113191	Accidents <input type="checkbox"/> Yes <input checked="" type="checkbox"/> No	
Days of Week: Monday to Friday	Contract Days: 127 to 131	Total Days: 365	Accident Report #: N/A
Canal(s) Worked In: CC-CC	Stations Worked Between: 0+00 to 14+75		

General

Remarks

#1 – Prime Contractor – Quality Enterprises:

Monday 02-21-2022:

- Contractor has an excavator mounted on a barge, a push boat, a support boat, and a hopper staged in Canal CC-CC at station 2+00. In addition, Contractor has a long-reach excavator, a front end loader, a water tank, and two fuel cubes staged on the property located at 1300 Curlew Avenue, Naples, FL, 34102.
- Contractor installed turbidity curtain across the mouth of Canal CC-CC.
- Contractor greased 326 excavator.
- Contractor used 323 excavator to check elevations, grind rock, and remove material between stations 1+50 to 3+50. Contractor placed removed material in the hopper.
- Contractor moved turbidity curtain to allow Canal CC-CC residents to pass.
- Mechanic came to site at 1300 Curlew Avenue to drop off a hose for 323 excavator.
- Contractor used push boat to position barge as necessary for grinding and removing material and to attach and remove the turbidity curtain.
- Contractor used support boat for extra transportation to and from the barge.

Tuesday 02-22-2022:

- Contractor has an excavator mounted on a barge staged in Canal CC-CC at station 5+00. Contractor has a push boat, a support boat, and a hopper staged in Canal CC-CC at station 2+00. In addition, Contractor has a long-reach excavator, a front end loader, a water tank, and two fuel cubes staged on the property located at 1300 Curlew Avenue, Naples, FL, 34102.
- Contractor installed turbidity curtain across the mouth of Canal CC-CC.
- Contractor used 323 excavator to remove material between stations 5+00 and 10+50. Contractor placed removed material in the hopper.
- Contractor used 323 excavator to grind rock between stations 8+00 and 8+50.
- Contractor used 326 excavator to transfer 2 hoppers of material from hopper to dewatering site at 1300 Curlew Avenue.
- Contractor used 326 excavator to redistribute the material at the dewatering site.
- Contractor moved turbidity curtain to allow Canal CC-CC residents to pass.
- Contractor used push boat to position barge as necessary for grinding and removing material and to attach and



WEEKLY SUMMARY REPORT – CONTRACT WEEK 19

21-036 EAST NAPLES BAY

DREDGING AND ROCK REMOVAL PROJECT



remove the turbidity curtain.

- Contractor used support boat for extra transportation to and from the barge.

Wednesday 02-23-2022:

- Contractor has an excavator mounted on a barge, a push boat, a support boat, and a hopper staged in Canal CC-CC at station 11+50. In addition, Contractor has a long-reach excavator, a front end loader, a water tank, and two fuel cubes staged on the property located at 1300 Curlew Avenue, Naples, FL, 34102.
- Contractor installed turbidity curtain across the mouth of Canal CC-CC.
- Contractor used 323 excavator to check elevations and remove material between stations 11+50 to 14+50. Contractor placed removed material in the hopper.
- Contractor used 326 excavator to transfer 1 hopper of material from the hopper to the dewatering site at 1300 Curlew Avenue. Contractor also redistributed material at the dewatering site.
- Contractor used push boat to position barge as necessary for grinding and removing material, to attach and remove the turbidity curtain, and to transport hopper between the barge and station 2+00.
- Contractor used support boat for extra transportation to and from the barge.

Thursday 02-24-2022:

- Contractor's equipment is staged in canal CC-CC at station 1+00; this equipment includes an excavator mounted on the barge. The contractor also had a hopper and a push boat staged in Canal CC-CC at station 1+50. Contractor also has a long-reach excavator, a front end loader, a water tank, and two fuel cubes staged on the property located at 1300 Curlew Avenue, Naples, FL, 34102.
- Contractor started dredging this morning at east section of canal (approx. station 14+00), working in west direction.
- Contractor installed turbidity curtains across the mouth of Canal CC-CC first thing this morning (double curtains noted).
- Contractor used 323 excavator (stick rover) to check bottom of canal elevations while removing high spots of material from stations 14+00 to 6+00 (canal cc-cc).
- Contractor used 326 long stick excavator to transfer hoppers of dredged material to the dewatering site at 1300 Curlew Avenue.
- Push boat was used to move barge, 323 excavator, and hopper as necessary for removing material.
- Periodic project area water turbidity testing was evident today.
- Dredging crew worked an abbreviated today (off project at 2:20PM) due to the excavator operator being called offsite for the rest of the afternoon.

Friday 02-25-2022:

- Contractor's equipment is staged in canal CC-CC at station 1+00; this equipment includes an excavator mounted on the barge. The contractor also had a hopper and a push boat staged in Canal CC-CC at station 1+50. Contractor also has a long-reach excavator, a front end loader, a water tank, and two fuel cubes staged on the property located at 1300 Curlew Avenue, Naples, FL, 34102.



WEEKLY SUMMARY REPORT – CONTRACT WEEK 19

21-036 EAST NAPLES BAY

DREDGING AND ROCK REMOVAL PROJECT



- Contractor installed rock grinding attachment on Cat 323 excavator this morning (8:30AM). Canal bottom rock grinding was in progress at approximate station 1+50 to 2+50.
- Contractor installed turbidity curtains across the mouth of Canal CC-CC first thing this morning (double curtains noted).
- Contractor removed turbidity curtain at mouth of canal at 8:25AM to give egress to a private boat. At 1:05PM the curtain was removed for private boat access to the canal.
- Contractor used 323 excavator (stick rover) to check bottom of canal elevations while removing high spots of hard material from stations 1+50 to 2+50(canal cc-cc).
- Push boat was used to move barge, 323 excavator, and hopper as necessary for removing/grinding material.
- Periodic project area water turbidity testing was evident today.

Note: Daily reports with pictures attached for the week.



DAILY REPORT OF CONSTRUCTION
 21-036 EAST NAPLES BAY
 DREDGING AND ROCK REMOVAL PROJECT



Date: 02/21/2022			
Inspectors: SB	Stantec PIN: 2028113191		Accidents <input type="checkbox"/> Yes <input checked="" type="checkbox"/> No
Day of Week: Monday	Contract Day: 127/365	Week: 19	Accident Report #: N/A
High Temp (°F): 82°F	AM Conditions: Sunny	PM Conditions: Cloudy	High Tide: 3:36 PM +2.4'
Low Temp (°F): 62°F	Wind: 8 mph	Wind: 8 mph	Low Tide: 9:59 AM +0.5'
Canal Worked In: CC-CC	Stations Worked Between:	1+50 to 3+50	

General	
#1 – Prime Contractor – Quality Enterprises:	
<ul style="list-style-type: none"> • Contractor has an excavator mounted on a barge, a push boat, a support boat, and a hopper staged in Canal CC-CC at station 2+00. In addition, Contractor has a long-reach excavator, a front end loader, a water tank, and two fuel cubes staged on the property located at 1300 Curlew Avenue, Naples, FL, 34102. • Contractor installed turbidity curtain across the mouth of Canal CC-CC. • Contractor greased 326 excavator. • Contractor used 323 excavator to check elevations, grind rock, and remove material between stations 1+50 to 3+50. Contractor placed removed material in the hopper. • Contractor moved turbidity curtain to allow Canal CC-CC residents to pass. • Mechanic came to site at 1300 Curlew Avenue to drop off a hose for 323 excavator. • Contractor used push boat to position barge as necessary for grinding and removing material and to attach and remove the turbidity curtain. • Contractor used support boat for extra transportation to and from the barge. 	

Contractor(s) and Personnel										
#	Name	Type	#	Hrs.	Type	#	Hrs.	Type	#	Hrs.
1	Prime: Quality Enterprises	PM	0	0	Boat Captain	1	9	Mechanic	1	0.5
		Excavator Operator	1	9	Truck Driver	0	0	Assistant	1	9
		Technician	0	0	Superintendent	1	9	VP	0	0

Equipment					
Cont/ Sub #	Equipment ID	Description	# Pieces	# Used	Total Hours Used
1	N/A	Barge	1	1	7
1	CAT 323	Excavator	1	1	7
1	CAT 326	Excavator	1	0	0
1	02016	Front End Loader	1	0	0
1	FL6223TB	Push Boat	1	1	7
1	FL2474PP	Support Boat	1	1	2
1	N3758Z	Fuel Truck	0	0	0
1	P9457E	Water Truck	0	0	0
1	725RZM	Water Tank	1	0	0
1	Z67EAZ	Small Dump truck	0	0	0
1	MB35DQ	Dump truck	0	0	0
1	MB28DQ	Dump truck	0	0	0
1	MB26DQ	Utility Truck	0	0	0
1	DRHS18	Utility Truck	0	0	0
1	N9524Z	Transport Truck	0	0	0

Visitors			
Name	Company	Hours at Job Site	
		From:	To:

Inspector Name and Position	Hours at Job Site/Office		Total Hours
Sam Boyd, EIT	From: 8:00 AM	To: 4:00 PM	8.0

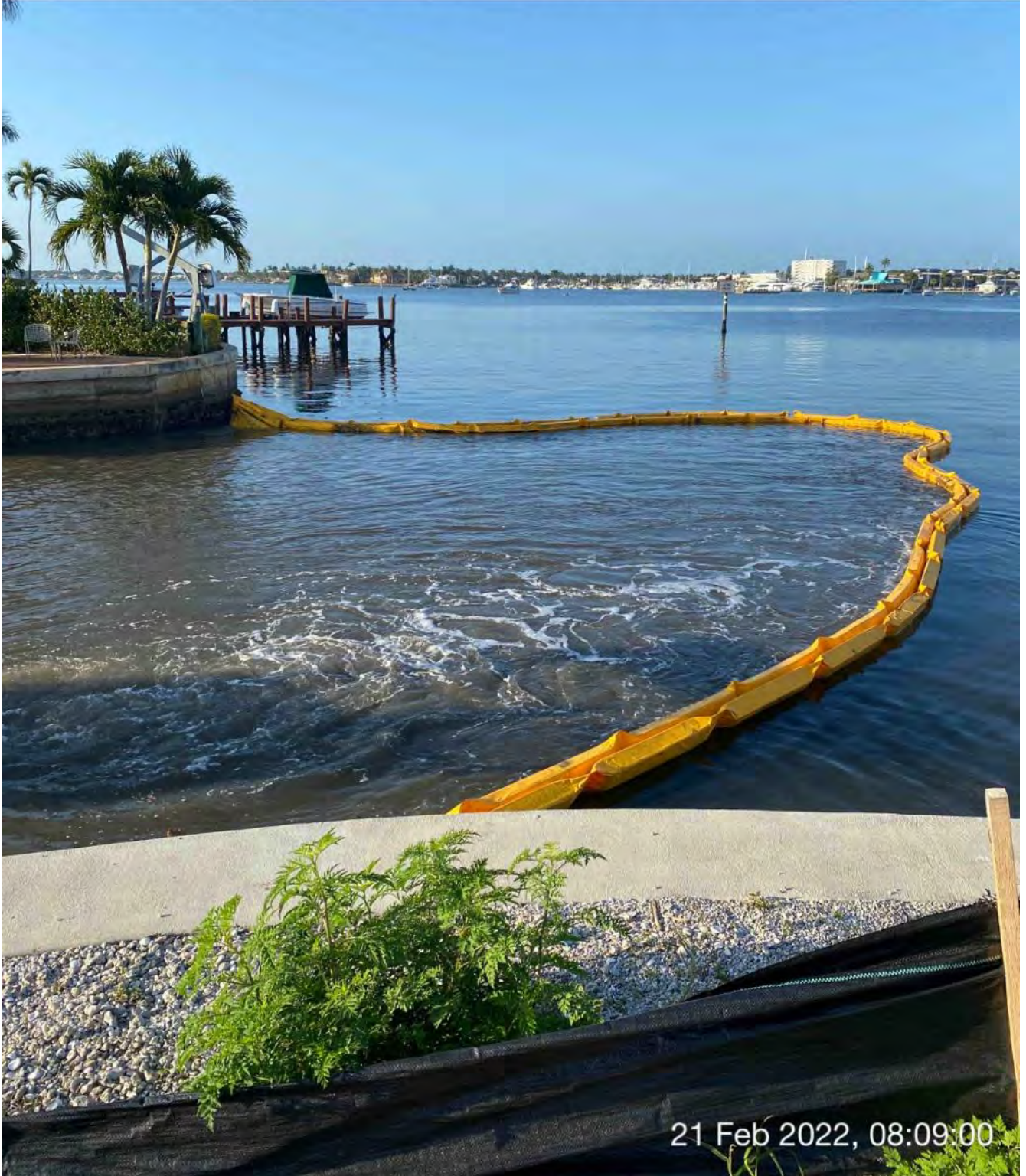
SE S SW
120 150 180 210 240

☉ 176°S (T) ☉ 26°8'14"N, 81°47'15"W ±13ft ▲ 10ft



21 Feb 2022, 08:07:40

Removed material at dewatering site at 1300 Curlew Avenue



Turbidity curtain across the mouth of Canal CC-CC

E 90 SE 120 150 S 180 210 S

☀ 153°SE (T) ● 26°8'13"N, 81°47'15"W ±22ft ▲ 8ft



323 excavator lifting spud to allow push boat to mobilize barge at station 1+50

S 180 SW 240 W 270 300
☉ 236°SW (T) ☉ 26°8'13"N, 81°47'15"W ±13ft ▲ 10ft



21 Feb 2022, 08:14:44

323 excavator removing material from station 1+50 and transferring to hopper



☉ 229°SW (T) ● 26°8'13"N, 81°47'15"W ±13ft ▲ 10ft



21 Feb 2022, 08:15:23

323 excavator removing material from station 1+50 and transferring to hopper



☀ 230°SW (T) ● 26°8'13"N, 81°47'15"W ±22ft ▲ 8ft



21 Feb 2022, 08:19:55

323 excavator removing material from station 2+00 and transferring to hopper



☉ 48°NE (T) ● 26°8'13"N, 81°47'16"W ±26ft ▲ 8ft



21 Feb 2022 11:36:13

Mechanic utility truck on site at 1300 Curlew Avenue

E 90 SE 120 150 S 180

☀ 131°SE (T) ● 26°8'13"N, 81°47'15"W ±13ft ▲ 6ft



323 excavator removing material from station 2+50 and transferring to hopper



☀ 96°E (T) ☉ 26°8'13"N, 81°47'14"W ±26ft ▲ 8ft



21 Feb 2022, 14:10:43

323 excavator lifting spud to allow push boat to mobilize barge at station 3+50

E 90 SE 120 150 S 180 SW 210
☀ 158°SE (T) ● 26°8'13"N, 81°47'14"W ±36ft ▲ 8ft



326 excavator with Epiroc grinder on barge at station 2+50

E 90 SE 120 150 180 S SW 210

☀ 160°S (T) ● 26°8'13"N, 81°47'14"W ±29ft ▲ 8ft



323 excavator lifting spud to allow push boat to mobilize barge at station 2+50



☀ 116°SE (T) ● 26°8'13"N, 81°47'14"W ±29ft ▲ 8ft



21 Feb 2022, 15:06:05

323 excavator grinding rock at station 3+25



DAILY REPORT OF CONSTRUCTION
 21-036 EAST NAPLES BAY
 DREDGING AND ROCK REMOVAL PROJECT



Date: 02/22/2022			
Inspectors: SB	Stantec PIN: 2028113191		Accidents <input type="checkbox"/> Yes <input checked="" type="checkbox"/> No
Day of Week: Tuesday	Contract Day: 128/365	Week: 19	Accident Report #: N/A
High Temp (°F): 85°F	AM Conditions: Sunny	PM Conditions: Cloudy	High Tide: 4:07 PM +2.4'
Low Temp (°F): 64°F	Wind: 10 mph	Wind: 6 mph	Low Tide: 10:29 AM +0.8'
Canal Worked In: CC-CC	Stations Worked Between:	5+00 to 10+50	

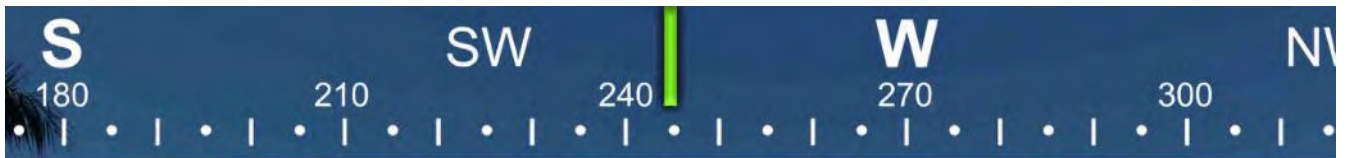
General
<p>#1 – Prime Contractor – Quality Enterprises:</p> <ul style="list-style-type: none"> • Contractor has an excavator mounted on a barge staged in Canal CC-CC at station 5+00. Contractor has a push boat, a support boat, and a hopper staged in Canal CC-CC at station 2+00. In addition, Contractor has a long-reach excavator, a front end loader, a water tank, and two fuel cubes staged on the property located at 1300 Curlew Avenue, Naples, FL, 34102. • Contractor installed turbidity curtain across the mouth of Canal CC-CC. • Contractor used 323 excavator to remove material between stations 5+00 and 10+50. Contractor placed removed material in the hopper. • Contractor used 323 excavator to grind rock between stations 8+00 and 8+50. • Contractor used 326 excavator to transfer 2 hoppers of material from hopper to dewatering site at 1300 Curlew Avenue. • Contractor used 326 excavator to redistribute the material at the dewatering site. • Contractor moved turbidity curtain to allow Canal CC-CC residents to pass. • Contractor used push boat to position barge as necessary for grinding and removing material and to attach and remove the turbidity curtain. • Contractor used support boat for extra transportation to and from the barge.

Contractor(s) and Personnel										
#	Name	Type	#	Hrs.	Type	#	Hrs.	Type	#	Hrs.
1	Prime: Quality Enterprises	PM	0	0	Boat Captain	1	9	Mechanic	0	0
		Excavator Operator	1	9	Truck Driver	0	0	Assistant	1	9
		Technician	0	0	Superintendent	1	9	VP	0	0

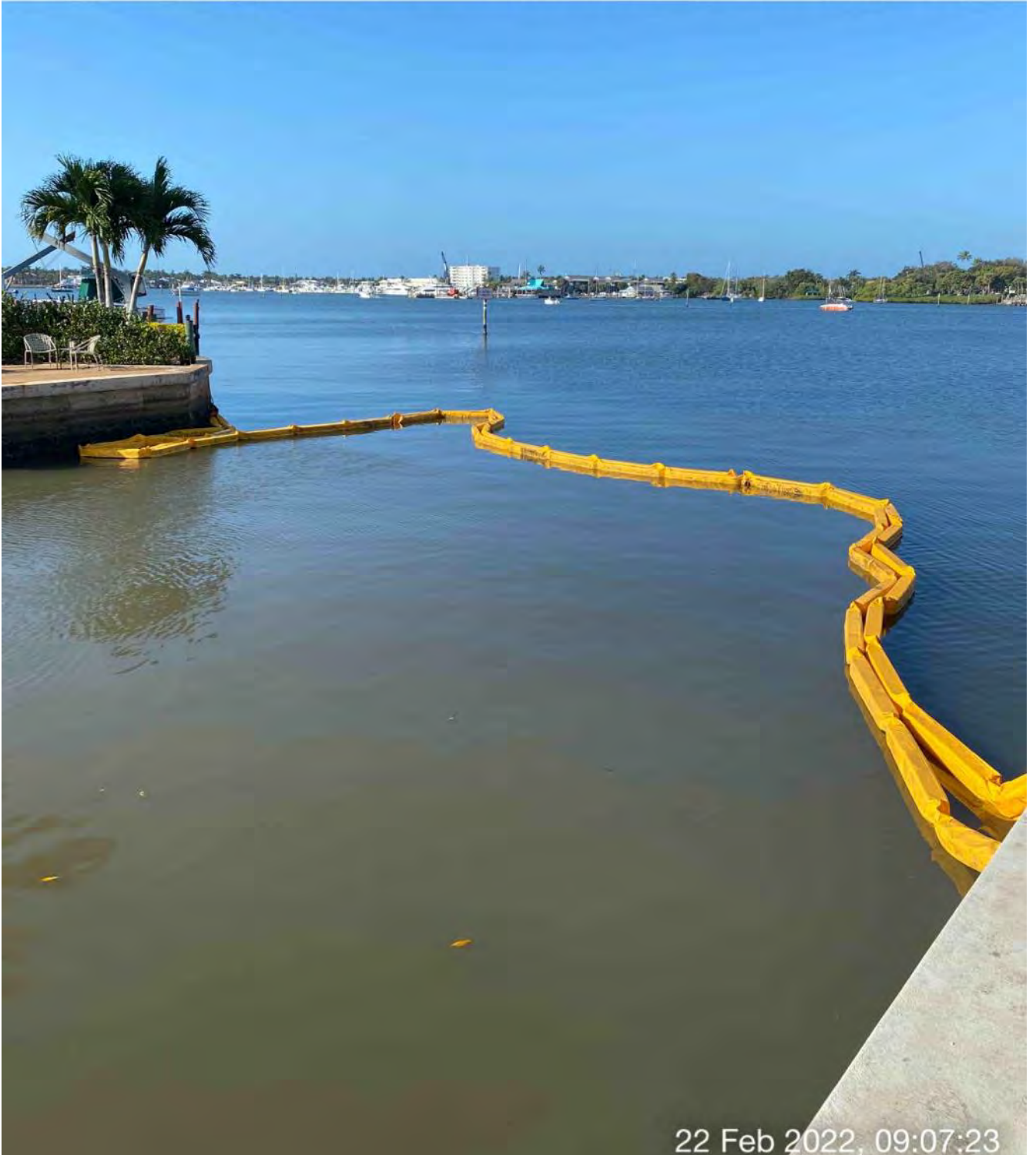
Equipment					
Cont/ Sub #	Equipment ID	Description	# Pieces	# Used	Total Hours Used
1	N/A	Barge	1	1	9
1	CAT 323	Excavator	1	1	9
1	CAT 326	Excavator	1	1	3
1	02016	Front End Loader	1	0	0
1	FL6223TB	Push Boat	1	1	9
1	FL2474PP	Support Boat	1	1	2
1	N3758Z	Fuel Truck	0	0	0
1	P9457E	Water Truck	0	0	0
1	725RZM	Water Tank	1	0	0
1	Z67EAZ	Small Dump truck	0	0	0
1	MB35DQ	Dump truck	0	0	0
1	MB28DQ	Dump truck	0	0	0
1	MB26DQ	Utility Truck	0	0	0
1	DRHS18	Utility Truck	0	0	0
1	N9524Z	Transport Truck	0	0	0

Visitors			
Name	Company	Hours at Job Site	
		From:	To:

Inspector Name and Position	Hours at Job Site/Office		Total Hours
Sam Boyd, EIT	From: 9:00 AM	To: 5:00 PM	8.0



☀ 245°SW (T) ● 26°8'13"N, 81°47'16"W ±13ft ▲ 13ft



22 Feb 2022, 09:07:23

Turbidity curtain across the mouth of Canal CC-CC

SE 150 S 180 SW 210 240
☀ 197°S (T) ☉ 26°8'13"N, 81°47'12"W ±32ft ▲ 8ft



22 Feb 2022, 09:15:16

323 excavator removing material from station 5+00 and transferring to hopper

SE S SW
20 150 180 210 240

☀ 190°S (T) ☉ 26°8'13"N, 81°47'11"W ±13ft ▲ 8ft



22 Feb 2022, 09:27:58

323 excavator removing material from station 5+00 and transferring to hopper

SE 150 S 180 SW 210 240

☀ 193°S (T) ☉ 26°8'13"N, 81°47'12"W ±62ft ▲ 8ft



22 Feb 2022, 09:30:51

323 excavator lifting spud to allow push boat to mobilize barge at station 5+00

E 150 S 180 210 SW 240 W 270
☀ 207°SW (T) ☉ 26°8'13"N, 81°47'11"W ±13ft ▲ 14ft



323 excavator removing material from station 5+25 and transferring to hopper

S 180 SW 240 W 270 N 300
☀ 244°SW (T) ☉ 26°8'13"N, 81°47'15"W ±68ft ▲ 8ft



326 excavator transferring removed material from hopper to dewatering site at 1300 Curlew Avenue



323 excavator removing material from station 7+00 and transferring to hopper

NE 60 E 90 SE 120 150
☀ 103°E (T) ☉ 26°8'13"N, 81°47'16"W ±16ft ▲ 8ft



326 excavator transferring removed material from hopper to dewatering site at 1300 Curlew Avenue

S 80 SW 210 240 W 270 NW 300

☀ 250°W (T) ● 26°8'13"N, 81°47'8"W ±42ft ▲ 7ft



22 Feb 2022, 14:08:22

323 excavator grinding rock at station 8+50

S 180 SW 210 240 W 270 NV 300
☀ 246°SW (T) ☉ 26°8'13"N, 81°47'8"W ±26ft ▲ 8ft



323 excavator with Epiroc grinder on barge at station 8+50



DAILY REPORT OF CONSTRUCTION
 21-036 EAST NAPLES BAY
 DREDGING AND ROCK REMOVAL PROJECT



Date: 02/23/2022			
Inspectors: SB	Stantec PIN: 2028113191		Accidents <input type="checkbox"/> Yes <input checked="" type="checkbox"/> No
Day of Week: Wednesday	Contract Day: 129/365	Week: 19	Accident Report #: N/A
High Temp (°F): 85°F	AM Conditions: Sunny	PM Conditions: Sunny	High Tide: 4:51 PM +2.4'
Low Temp (°F): 66°F	Wind: 6 mph	Wind: 9 mph	Low Tide: 10:56 AM +1.1'
Canal Worked In: CC-CC	Stations Worked Between:	11+50 to 14+50	

General	
#1 – Prime Contractor – Quality Enterprises:	
<ul style="list-style-type: none"> • Contractor has an excavator mounted on a barge, a push boat, a support boat, and a hopper staged in Canal CC-CC at station 11+50. In addition, Contractor has a long-reach excavator, a front end loader, a water tank, and two fuel cubes staged on the property located at 1300 Curlew Avenue, Naples, FL, 34102. • Contractor installed turbidity curtain across the mouth of Canal CC-CC. • Contractor used 323 excavator to check elevations and remove material between stations 11+50 to 14+50. Contractor placed removed material in the hopper. • Contractor used 326 excavator to transfer 2 hoppers of material from the hopper to the dewatering site at 1300 Curlew Avenue. Contractor also redistributed material at the dewatering site. • Contractor used push boat to position barge as necessary for grinding and removing material, to attach and remove the turbidity curtain, and to transport hopper between the barge and station 2+00. • Contractor used support boat for extra transportation to and from the barge. 	

Contractor(s) and Personnel										
#	Name	Type	#	Hrs.	Type	#	Hrs.	Type	#	Hrs.
1	Prime: Quality Enterprises	PM	0	0	Boat Captain	1	9	Mechanic	0	0
		Excavator Operator	1	9	Truck Driver	0	0	Assistant	1	9
		Technician	0	0	Superintendent	1	9	VP	0	0

Equipment					
Cont/ Sub #	Equipment ID	Description	# Pieces	# Used	Total Hours Used
1	N/A	Barge	1	1	9
1	CAT 323	Excavator	1	1	9
1	CAT 326	Excavator	1	1	2
1	02016	Front End Loader	1	0	0
1	FL6223TB	Push Boat	1	1	9
1	FL2474PP	Support Boat	1	1	2
1	N3758Z	Fuel Truck	0	0	0
1	P9457E	Water Truck	0	0	0
1	725RZM	Water Tank	1	0	0
1	Z67EAZ	Small Dump truck	0	0	0
1	MB35DQ	Dump truck	0	0	0
1	MB28DQ	Dump truck	0	0	0
1	MB26DQ	Utility Truck	0	0	0
1	DRHS18	Utility Truck	0	0	0
1	N9524Z	Transport Truck	0	0	0

Visitors			
Name	Company	Hours at Job Site	
		From:	To:

Inspector Name and Position	Hours at Job Site/Office		Total Hours
Sam Boyd, EIT	From: 8:30 AM	To: 5:00 PM	8.5

SE 120 150 180 210 240 SW

☀ 180°S (T) ☉ 26°8'14"N, 81°47'15"W ±22ft ▲ 8ft



Removed material at dewatering site at 1300 Curlew Avenue

S SW W
150 180 210 240 270
☀ 218°SW (T) ☉ 26°8'13"N, 81°47'16"W ±13ft ▲ 9ft



Turbidity curtain across the mouth of Canal CC-CC

S 180 210 SW 240 W 270
223°SW (T) 26°8'13"N, 81°47'3"W ±59ft ▲ 8ft



23 Feb 2022, 09:04:44

323 excavator removing material from station 12+00 and transferring to hopper

S 180 SW 210 240 W 270 300
☉ 236°SW (T) ☉ 26°8'13"N, 81°47'4"W ±42ft ▲ 9ft



23 Feb 2022, 09:20:47

323 excavator lifting spud to allow push boat to mobilize barge at station 12+00

SE

S

SW

150

180

210

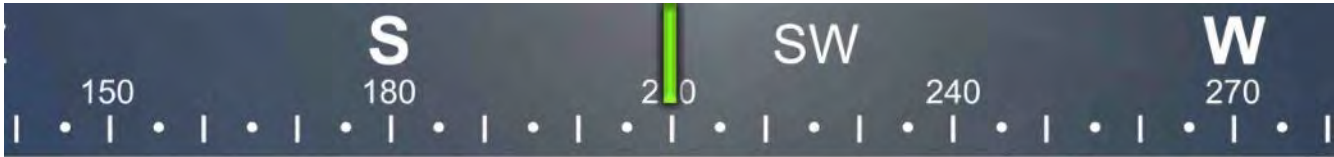
240

☀ 194°S (T) ☉ 26°8'13"N, 81°47'3"W ±26ft ▲ 8ft



23 Feb 2022, 09:21:27

323 excavator removing material from station 13+00 and transferring to hopper



☉ 210°SW (T) ● 26°8'13"N, 81°47'16"W ±45ft ▲ 8ft



23 Feb 2022, 09:52:31

326 excavator transferring removed material from hopper to dewatering site at 1300 Curlew Avenue



☀ 196°S (T) ● 26°8'14"N, 81°47'15"W ±13ft ▲ 8ft



326 excavator transferring removed material from hopper to dewatering site at 1300 Curlew Avenue

SE S SW
120 150 180 210 240

☉ 189°S (T) ☉ 26°8'13"N, 81°47'3"W ±13ft ▲ 9ft



23 Feb 2022, 11:28:23

323 excavator removing material from station 13+50 and transferring to hopper

E 90 SE 120 150 180 S 210 SW
☀ 158°SE (T) ☉ 26°8'13"N, 81°47'3"W ±19ft ▲ 8ft



323 excavator lifting spud to allow push boat to mobilize barge at station 13+50

E 90 SE 120 150 180 S SW 210

☀ 159°S (T) ☉ 26°8'13"N, 81°47'3"W ±45ft ▲ 8ft



23 Feb 2022, 14:13:14

323 excavator removing material from station 14+00 and transferring to hopper



☀ 160°S (T) ● 26°8'14"N, 81°47'16"W ±13ft ▲ 7ft



23 Feb 2022 16:53:54

326 excavator transferring removed material from hopper to dewatering site at 1300 Curlew Avenue



DAILY REPORT OF CONSTRUCTION
 21-036 EAST NAPLES BAY
 DREDGING AND ROCK REMOVAL PROJECT



Date: 2/24/2022			
Inspectors: AB	Stantec PIN: 2028113191		Accidents <input type="checkbox"/> Yes <input checked="" type="checkbox"/> No
Day of Week: Thursday	Contract Day: 130/365	Week: 19	Accident Report #: N/A
High Temp (°F): 82°F	AM Conditions: Mostly sunny Wind: 5-10 mph	PM Conditions: Partly cloudy Wind: 5-10 mph	High Tide: 8:37 AM +1.5 ft.
Low Temp (°F): 68°F			Low Tide: 10:59 AM +1.3 ft.
Canal Worked In: CC-CC	Stations Worked Between:	14+00 to 6+00 (approx.)	

General
<p>#1 – Prime Contractor – Quality Enterprises:</p> <ul style="list-style-type: none"> Contractor’s equipment is staged in canal CC-CC at station 1+00; this equipment includes an excavator mounted on the barge. The contractor also had a hopper and a push boat staged in Canal CC-CC at station 1+50. Contractor also has a long-reach excavator, a front end loader, a water tank, and two fuel cubes staged on the property located at 1300 Curlew Avenue, Naples, FL, 34102. Contractor started dredging this morning at east section of canal (approx. station 14+00), working in west direction. Contractor installed turbidity curtains across the mouth of Canal CC-CC first thing this morning (double curtains noted). Contractor used 323 excavator (stick rover) to check bottom of canal elevations while removing high spots of material from stations 14+00 to 6+00 (canal cc-cc). Contractor used 326 long stick excavator to transfer hoppers of dredged material to the dewatering site at 1300 Curlew Avenue. Push boat was used to move barge, 323 excavator, and hopper as necessary for removing material. Periodic project area water turbidity testing was evident today. Dredging crew worked an abbreviated today (off project at 2:20PM) due to the excavator operator being called offsite for the rest of the afternoon.

Contractor(s) and Personnel										
#	Name	Type	#	Hrs.	Type	#	Hrs.	Type	#	Hrs.
1	Prime: Quality Enterprises	PM	0	0	Boat Captain	1	7	Foreman	0	0
		Excavator Operator	1	6	Truck Driver	0	0	Assistant	1	7
		Technician	0	0	Superintendent		0	VP	0	0

Equipment					
Cont/ Sub #	Equipment ID	Description	# Pieces	# Used	Total Hours Used
1	N/A	Barge	1	1	7
1	CAT 323	Excavator	1	1	6
1	CAT 326	Excavator	1	1	2
1	Volvo	Front End Loader	1	0	0
1	FL6223TB	Push Boat	1	1	7
1	FL2474PP	Support Boat	1	1	1
1	N6143X	Fuel Truck	0	0	0
1	P9457E	Water Truck	0	0	0
1	725RZM	Water Tank	1	0	0
1	Z67EAZ	Dump truck	0	0	0
1	MB38DQ	Utility Truck	0	0	0
1	5178CR	Transport Truck	0	0	0

Visitors			
Name	Company	Hours at Job Site	
		From:	To:

Inspector Name and Position	Hours at Job Site/Office		Total Hours
Alan Bechok CPII	From: 8:30 AM	To: 2:30 PM (+3 hr.)	9





Current status of project area at 1300 Curlew Ave



Removing canal bottom high spots (approx. sta. 14+50 cc-cc)



Removing canal bottom material at approx. station 12+00 (canal cc-cc)



Removal of canal cc-cc bottom material at approx. station 7+50



326 excavator transferring material from hopper to dewatering site at 1300 Curlew Avenue



DAILY REPORT OF CONSTRUCTION
 21-036 EAST NAPLES BAY
 DREDGING AND ROCK REMOVAL PROJECT



Date: 2/25/2022			
Inspectors: AB	Stantec PIN: 2028113191		Accidents <input type="checkbox"/> Yes <input checked="" type="checkbox"/> No
Day of Week: Friday	Contract Day: 131/365	Week: 19	Accident Report #: N/A
High Temp (°F): 80°F	AM Conditions: Mostly sunny Wind: 5-15 mph	PM Conditions: Mostly sunny Wind: 5-15 mph	High Tide: 11:37 AM +1.7 ft.
Low Temp (°F): 68°F			Low Tide: 2:28 PM +1.4ft.
Canal Worked In: CC-CC	Stations Worked Between:	1+50 to2+50 (approx.)	

General
<p>#1 – Prime Contractor – Quality Enterprises:</p> <ul style="list-style-type: none"> • Contractor’s equipment is staged in canal CC-CC at station 1+00; this equipment includes an excavator mounted on the barge. The contractor also had a hopper and a push boat staged in Canal CC-CC at station 1+50. Contractor also has a long-reach excavator, a front end loader, a water tank, and two fuel cubes staged on the property located at 1300 Curlew Avenue, Naples, FL, 34102. • Contractor installed rock grinding attachment on Cat 323 excavator this morning (8:30AM). Canal bottom rock grinding was in progress at approximate station 1+50 to 2+50. • Contractor installed turbidity curtains across the mouth of Canal CC-CC first thing this morning (double curtains noted). • Contractor removed turbidity curtain at mouth of canal at 8:25AM to give egress to a private boat. At 1:05PM the curtain was removed for private boat access to the canal. • Contractor used 323 excavator (stick rover) to check bottom of canal elevations while removing high spots of hard material from stations 1+50 to 2+50(canal cc-cc). • Push boat was used to move barge, 323 excavator, and hopper as necessary for removing/grinding material. • Periodic project area water turbidity testing was evident today.

Contractor(s) and Personnel

#	Name	Type	#	Hrs.	Type	#	Hrs.	Type	#	Hrs.
1	Prime: Quality Enterprises	PM	0	0	Boat Captain	1	9	Foreman	0	0
		Excavator Operator	1	9	Truck Driver	0	0	Assistant	1	9
		Technician	0	0	Superintendent	0	0	VP	0	0

Equipment					
Cont/ Sub #	Equipment ID	Description	# Pieces	# Used	Total Hours Used
1	N/A	Barge	1	1	8
1	CAT 323	Excavator	1	1	8
1	CAT 326	Excavator	1	0	0
1	Volvo	Front End Loader	1	0	0
1	FL6223TB	Push Boat	1	1	4
1	FL2474PP	Support Boat	1	1	1
1	N6143X	Fuel Truck	0	0	0
1	P9457E	Water Truck	0	0	0
1	725RZM	Water Tank	1	0	0
1	Z67EAZ	Dump truck	0	0	0
1	MB38DQ	Utility Truck	0	0	0
1	5178CR	Transport Truck	0	0	0

Visitors			
Name	Company	Hours at Job Site	
		From:	To:

Inspector Name and Position	Hours at Job Site/Office		Total Hours
Alan Bechok CPII	From: 8:00 AM	To: 2:00 PM (+3 hr.)	9





Start of canal bottom grinding (approx. station 2+00, canal cc-cc)



Turbidity curtain re-attached before construction activities resumed



Current status of project area at 1300 Curlew Ave.



Grinding down hard material high spots (approx. sta. 2+50, canal cc-cc)



Grinding head being used today.