



WEEKLY SUMMARY REPORT – CONTRACT WEEK 18

21-036 EAST NAPLES BAY

DREDGING AND ROCK REMOVAL PROJECT



Date: 2/14/2022 to 2/18/2022			
Inspectors: Sam Boyd	Stantec PIN: 2028113191		Accidents <input type="checkbox"/> Yes <input checked="" type="checkbox"/> No
Days of Week: Monday to Friday	Contract Days: 120 to 124	Total Days: 365	Accident Report #: N/A
Canal(s) Worked In: BB-BB / CC-CC	Stations Worked Between: 9+50 to 11+50 / 0+00 to 2+00		

General

Remarks

#1 – Prime Contractor – Quality Enterprises:

Monday 02-14-2022:

- Contractor has an excavator mounted on a barge, a push boat, a support boat, and a hopper staged in Canal CC-CC at station 1+50. In addition, Contractor has a long-reach excavator, a front end loader, a water tank, and two fuel cubes staged on the property located at 1300 Curlew Avenue, Naples, FL, 34102.
- Contractor installed turbidity curtain across the mouth of Canal BB-BB.
- Contractor used 323 excavator to grind rock between stations 9+50 and 9+75.
- Contractor used push boat to position barge as necessary for grinding rock.
- Contractor used support boat as extra transportation between Canals CC-CC and BB-BB.

Tuesday 02-15-2022:

- Contractor has an excavator mounted on a barge and a push boat, staged in Canal BB-BB at station 9+75. Contractor has a support boat and a hopper staged in Canal CC-CC at station 1+50. In addition, Contractor has a long-reach excavator, a front end loader, a water tank, and two fuel cubes staged on the property located at 1300 Curlew Avenue, Naples, FL, 34102.
- Contractor installed turbidity curtain across the mouth of Canal BB-BB.
- Contractor used 323 excavator to grind rock between stations 9+75 and 11+50.
- Contractor used push boat to position barge as necessary for grinding rock.
- Contractor used support boat as extra transportation between Canals CC-CC and BB-BB.

Wednesday 02-16-2022:

- Contractor has an excavator mounted on a barge staged in Canal BB-BB at station 11+00. Contractor has a push boat, a support boat, and a hopper staged in Canal CC-CC at station 1+50. In addition, Contractor has a long-reach excavator, a front end loader, a water tank, and two fuel cubes staged on the property located at 1300 Curlew Avenue, Naples, FL, 34102.
- Contractor took push boat from Canal CC-CC to Canal BB-BB where the barge was stationed. Contractor used push boat to transport barge back to Canal CC-CC.
- Contractor connected 6 turbidity curtains and attached them across the mouth of Canal CC-CC.
- Contractor used 323 excavator to check depths and grind material between stations 0+00 and 1+00.
- Contractor used 323 excavator to remove 2 hoppers of material between stations 0+00 and 1+00.



WEEKLY SUMMARY REPORT – CONTRACT WEEK 18

21-036 EAST NAPLES BAY

DREDGING AND ROCK REMOVAL PROJECT



- Contractor used 326 excavator to transfer one hopper of material from the hopper to the dewatering site at 1300 Curlew Avenue.
- Mechanic came to site a 1300 Curlew Avenue to inspect the 326 excavator that had stopped working.
- Contractor used 323 excavator to transfer one hopper of material from the hopper to the dewatering site at 1300 Curlew Avenue.
- Contractor used push boat to position barge as necessary for grinding and removing material, for moving the hopper to transfer material, and to attach and remove the turbidity curtain as necessary.
- Contractor used support boat as extra transportation between 1300 Curlew Avenue and the barge.

Thursday 02-17-2022:

- Contractor has an excavator mounted on a barge, a push boat, a support boat, and a hopper staged in Canal CC-CC at station 1+50. In addition, Contractor has a long-reach excavator, a front end loader, a water tank, and two fuel cubes staged on the property located at 1300 Curlew Avenue, Naples, FL, 34102.
- Contractor repaired silt fence around the property at 1300 Curlew Avenue.
- Contractor used push boat to move the barge from station 1+50 to 1+00.
- Contractor used push boat to install turbidity curtain across the mouth of Canal CC-CC.
- Contractor used 323 excavator to check elevations, grind rock, and remove material between stations 0+00 to 1+00. Contractor placed removed material in the hopper.
- Small dump truck came to the site at 1300 Curlew Avenue to pick up trash.
- Contractor used push boat to position barge as necessary for grinding and removing material, for moving the hopper to transfer material, and to attach and remove the turbidity curtain as necessary.

Friday 02-18-2022:

- Contractor has an excavator mounted on a barge, a push boat, a support boat, and a hopper staged in Canal CC-CC at station 1+00. In addition, Contractor has a long-reach excavator, a front end loader, a water tank, and two fuel cubes staged on the property located at 1300 Curlew Avenue, Naples, FL, 34102.
- Contractor installed turbidity curtain across the mouth of Canal CC-CC.
- Contractor greased 326 excavator.
- Contractor used 323 excavator to check elevations, grind rock, and remove material between stations 0+50 to 2+00. Contractor placed removed material in the hopper.
- Contractor moved turbidity curtain to allow Canal CC-CC residents to pass.
- Contractor used 326 excavator to transfer 2 hoppers of material from the hopper to the dewatering site at 1300 Curlew Avenue. Contractor redistributed the removed material.
- Contractor used push boat to position barge as necessary for grinding and removing material, for moving the hopper to transfer material, and to attach and remove the turbidity curtain as necessary.
- Contractor used water tank to clean barge, 323 excavator, hopper, push boat, and 326 excavator.



WEEKLY SUMMARY REPORT – CONTRACT WEEK 18
21-036 EAST NAPLES BAY
DREDGING AND ROCK REMOVAL PROJECT



Note: Daily reports with pictures attached for the week.



DAILY REPORT OF CONSTRUCTION
 21-036 EAST NAPLES BAY
 DREDGING AND ROCK REMOVAL PROJECT



Date: 02/14/2022			
Inspectors: SB	Stantec PIN: 2028113191		Accidents <input type="checkbox"/> Yes <input checked="" type="checkbox"/> No
Day of Week: Monday	Contract Day: 120/365	Week: 18	Accident Report #: N/A
High Temp (°F): 68°F	AM Conditions: Sunny	PM Conditions: Sunny	High Tide: 6:07 AM -0.5'
Low Temp (°F): 50°F	Wind: 12 mph	Wind: 14 mph	Low Tide: 12:46 PM +1.9'
Canal Worked In: BB-BB	Stations Worked Between:	9+50 to 9+75	

General
<p>#1 – Prime Contractor – Quality Enterprises:</p> <ul style="list-style-type: none"> • Contractor has an excavator mounted on a barge, a push boat, a support boat, and a hopper staged in Canal CC-CC at station 1+50. In addition, Contractor has a long-reach excavator, a front end loader, a water tank, and two fuel cubes staged on the property located at 1300 Curlew Avenue, Naples, FL, 34102. • Contractor installed turbidity curtain across the mouth of Canal BB-BB. • Contractor used 323 excavator to grind rock between stations 9+50 and 9+75. • Contractor used push boat to position barge as necessary for grinding rock. • Contractor used support boat as extra transportation between Canals CC-CC and BB-BB.

Contractor(s) and Personnel										
#	Name	Type	#	Hrs.	Type	#	Hrs.	Type	#	Hrs.
1	Prime: Quality Enterprises	PM	0	0	Boat Captain	1	9	Mechanic	0	0
		Excavator Operator	0	0	Truck Driver	0	0	Assistant	1	9
		Technician	0	0	Superintendent	1	9	VP	0	0

Equipment					
Cont/ Sub #	Equipment ID	Description	# Pieces	# Used	Total Hours Used
1	N/A	Barge	1	1	8
1	CAT 323	Excavator	1	1	8
1	CAT 326	Excavator	1	0	0
1	02016	Front End Loader	1	0	0
1	FL6223TB	Push Boat	1	1	8
1	FL2474PP	Support Boat	1	1	2
1	N3758Z	Fuel Truck	0	0	0
1	P9457E	Water Truck	0	0	0
1	725RZM	Water Tank	1	0	0
1	Z67EAZ	Small Dump truck	0	0	0
1	MB35DQ	Dump truck	0	0	0
1	MB28DQ	Dump truck	0	0	0
1	MB26DQ	Utility Truck	0	0	0
1	DRHS18	Utility Truck	0	0	0
1	N9524Z	Transport Truck	0	0	0

Visitors			
Name	Company	Hours at Job Site	
		From:	To:

Inspector Name and Position	Hours at Job Site/Office		Total Hours
Sam Boyd, EIT	From: 8:00 AM	To: 4:30 PM	8.5

S 180 210 SW 240 W 270

☉ 222°SW (T) ● 26°8'13"N, 81°47'16"W ±13ft ▲ 8ft



14 Feb 2022, 08:04:12

323 excavator lifting spud to allow push boat to mobilize barge at station 1+50 in Canal CC-CC

S 30 SW 210 240 W 270 NW 300
☀ 251°W (T) ☉ 26°8'13"N, 81°47'16"W ±16ft ▲ 8ft



Push boat transporting barge and 323 excavator from Canal CC-CC to Canal BB-BB

SW 240 W 270 NW 330 N 0

☀ 293°W (T) ☉ 26°8'9"N, 81°47'15"W ±19ft ▲ 9ft



14 Feb 2022, 08:45:13

Installing turbidity curtain across the mouth of Canal BB-BB

W 240 270 300 330 0 N
306°NW (T) 26°8'8"N, 81°47'6"W ±19ft ▲ 8ft



14 Feb 2022, 08:52:38

323 excavator grinding rock at station 9+50



323 excavator grinding rock at station 9+50

W 270 NW 300 330 N 0 30
☀ 321°NW (T) ☉ 26°8'8"N, 81°47'7"W ±22ft ▲ 8ft



14 Feb 2022, 15:32:07

323 excavator grinding rock at station 9+75



DAILY REPORT OF CONSTRUCTION
 21-036 EAST NAPLES BAY
 DREDGING AND ROCK REMOVAL PROJECT



Date: 02/15/2022			
Inspectors: SB	Stantec PIN: 2028113191		Accidents <input type="checkbox"/> Yes <input checked="" type="checkbox"/> No
Day of Week: Tuesday	Contract Day: 121/365	Week: 18	Accident Report #: N/A
High Temp (°F): 77°F	AM Conditions: Cloudy	PM Conditions: Cloudy	High Tide: 6:43 AM -0.6'
Low Temp (°F): 51°F	Wind: 8 mph	Wind: 15 mph	Low Tide: 6:40 PM +0.9'
Canal Worked In: BB-BB	Stations Worked Between:	9+75 to 11+50	

General	
#1 – Prime Contractor – Quality Enterprises:	
<ul style="list-style-type: none"> • Contractor has an excavator mounted on a barge and a push boat, staged in Canal BB-BB at station 9+75. Contractor has a support boat and a hopper staged in Canal CC-CC at station 1+50. In addition, Contractor has a long-reach excavator, a front end loader, a water tank, and two fuel cubes staged on the property located at 1300 Curlew Avenue, Naples, FL, 34102. • Contractor installed turbidity curtain across the mouth of Canal BB-BB. • Contractor used 323 excavator to grind rock between stations 9+75 and 11+50. • Contractor used push boat to position barge as necessary for grinding rock. • Contractor used support boat as extra transportation between Canals CC-CC and BB-BB. 	

Contractor(s) and Personnel										
#	Name	Type	#	Hrs.	Type	#	Hrs.	Type	#	Hrs.
1	Prime: Quality Enterprises	PM	0	0	Boat Captain	1	9	Mechanic	0	0
		Excavator Operator	0	0	Truck Driver	0	0	Assistant	1	9
		Technician	0	0	Superintendent	1	9	VP	0	0

Equipment					
Cont/ Sub #	Equipment ID	Description	# Pieces	# Used	Total Hours Used
1	N/A	Barge	1	1	9
1	CAT 323	Excavator	1	1	9
1	CAT 326	Excavator	1	0	0
1	02016	Front End Loader	1	0	0
1	FL6223TB	Push Boat	1	1	9
1	FL2474PP	Support Boat	1	1	2
1	N3758Z	Fuel Truck	0	0	0
1	P9457E	Water Truck	0	0	0
1	725RZM	Water Tank	1	0	0
1	Z67EAZ	Small Dump truck	0	0	0
1	MB35DQ	Dump truck	0	0	0
1	MB28DQ	Dump truck	0	0	0
1	MB26DQ	Utility Truck	0	0	0
1	DRHS18	Utility Truck	0	0	0
1	N9524Z	Transport Truck	0	0	0

Visitors			
Name	Company	Hours at Job Site	
		From:	To:

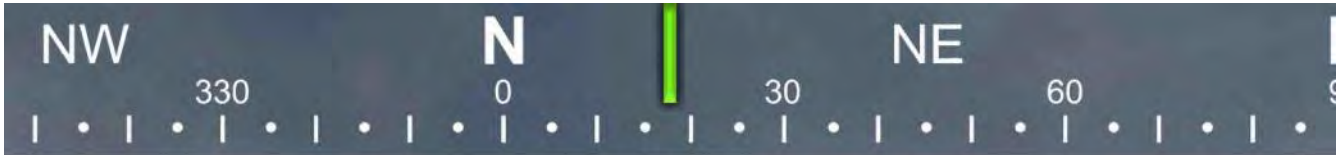
Inspector Name and Position	Hours at Job Site/Office		Total Hours
Sam Boyd, EIT	From: 8:15 AM	To: 4:45 PM	8.5



☉ 26°NE (T) ● 26°8'8"N, 81°47'7"W ±19ft ▲ 8ft



323 excavator grinding rock at station 10+00



☀ 18°N (T) ☉ 26°8'8"N, 81°47'6"W ±49ft ▲ 8ft

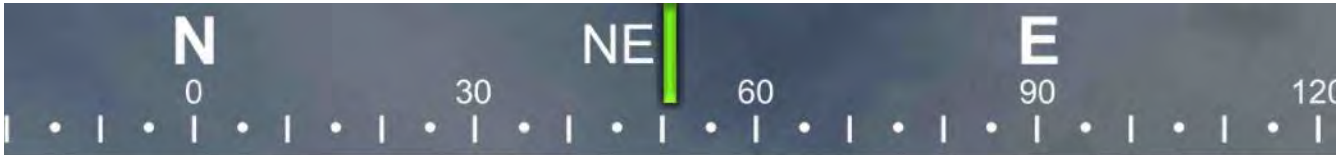


15 Feb 2022, 14:17:15

323 excavator lifting spud to allow push boat to mobilize barge at station 10+00



Epiroc grinder on 323 excavator



☀ 51°NE (T) ☉ 26°8'8"N, 81°47'6"W ±13ft ▲ 8ft



15 Feb 2022, 14:21:33

323 excavator grinding rock at station 10+25



☀ 352°N (T) ☉ 26°8'8"N, 81°47'6"W ±39ft ▲ 9ft



15 Feb 2022, 14:34:23

323 excavator lifting spud to allow push boat to mobilize barge at station 10+25



☀ 264°W (T) ☉ 26°8'9"N, 81°47'4"W ±22ft ▲ 8ft



323 excavator grinding rock at station 11+00



☉ 255°W (T) ☉ 26°8'9"N, 81°47'4"W ±13ft ▲ 7ft



15 Feb 2022, 16:40:04

323 excavator grinding rock at station 11+50



DAILY REPORT OF CONSTRUCTION
 21-036 EAST NAPLES BAY
 DREDGING AND ROCK REMOVAL PROJECT



Date: 02/16/2022			
Inspectors: SB	Stantec PIN: 2028113191	Accidents <input type="checkbox"/> Yes <input checked="" type="checkbox"/> No	
Day of Week: Wednesday	Contract Day: 122/365	Week: 18	Accident Report #: N/A
High Temp (°F): 83°F	AM Conditions: Sunny	PM Conditions: Sunny	High Tide: 1:18 PM +1.9'
Low Temp (°F): 62°F	Wind: 9 mph	Wind: 11 mph	Low Tide: 7:04 AM -0.5'
Canal Worked In: CC-CC	Stations Worked Between:	0+00 to 1+50	

General
<p>#1 – Prime Contractor – Quality Enterprises:</p> <ul style="list-style-type: none"> • Contractor has an excavator mounted on a barge staged in Canal BB-BB at station 11+00. Contractor has a push boat, a support boat, and a hopper staged in Canal CC-CC at station 1+50. In addition, Contractor has a long-reach excavator, a front end loader, a water tank, and two fuel cubes staged on the property located at 1300 Curlew Avenue, Naples, FL, 34102. • Contractor took push boat from Canal CC-CC to Canal BB-BB where the barge was stationed. Contractor used push boat to transport barge back to Canal CC-CC. • Contractor connected 6 turbidity curtains and attached them across the mouth of Canal CC-CC. • Contractor used 323 excavator to check depths and grind material between stations 0+00 and 1+00. • Contractor used 323 excavator to remove 2 hoppers of material between stations 0+00 and 1+00. • Contractor used 326 excavator to transfer one hopper of material from the hopper to the dewatering site at 1300 Curlew Avenue. • Mechanic came to site a 1300 Curlew Avenue to inspect the 326 excavator that had stopped working. • Contractor used 323 excavator to transfer one hopper of material from the hopper to the dewatering site at 1300 Curlew Avenue. • Contractor used push boat to position barge as necessary for grinding and removing material, for moving the hopper to transfer material, and to attach and remove the turbidity curtain as necessary. • Contractor used support boat as extra transportation between 1300 Curlew Avenue and the barge.

Contractor(s) and Personnel										
#	Name	Type	#	Hrs.	Type	#	Hrs.	Type	#	Hrs.
1	Prime: Quality Enterprises	PM	0	0	Boat Captain	1	9	Mechanic	0	0
		Excavator Operator	0	0	Truck Driver	0	0	Assistant	1	9
		Technician	0	0	Superintendent	1	9	VP	0	0

Equipment					
Cont/ Sub #	Equipment ID	Description	# Pieces	# Used	Total Hours Used
1	N/A	Barge	1	1	9
1	CAT 323	Excavator	1	1	9
1	CAT 326	Excavator	1	1	2
1	02016	Front End Loader	1	0	0
1	FL6223TB	Push Boat	1	1	9
1	FL2474PP	Support Boat	1	1	2
1	N3758Z	Fuel Truck	0	0	0
1	P9457E	Water Truck	0	0	0
1	725RZM	Water Tank	1	0	0
1	Z67EAZ	Small Dump truck	0	0	0
1	MB35DQ	Dump truck	0	0	0
1	MB28DQ	Dump truck	0	0	0
1	MB26DQ	Utility Truck	1	1	1
1	DRHS18	Utility Truck	0	0	0
1	N9524Z	Transport Truck	0	0	0

Visitors			
Name	Company	Hours at Job Site	
		From:	To:

Inspector Name and Position	Hours at Job Site/Office		Total Hours
Sam Boyd, EIT	From: 8:00 AM	To: 4:30 PM	8.5



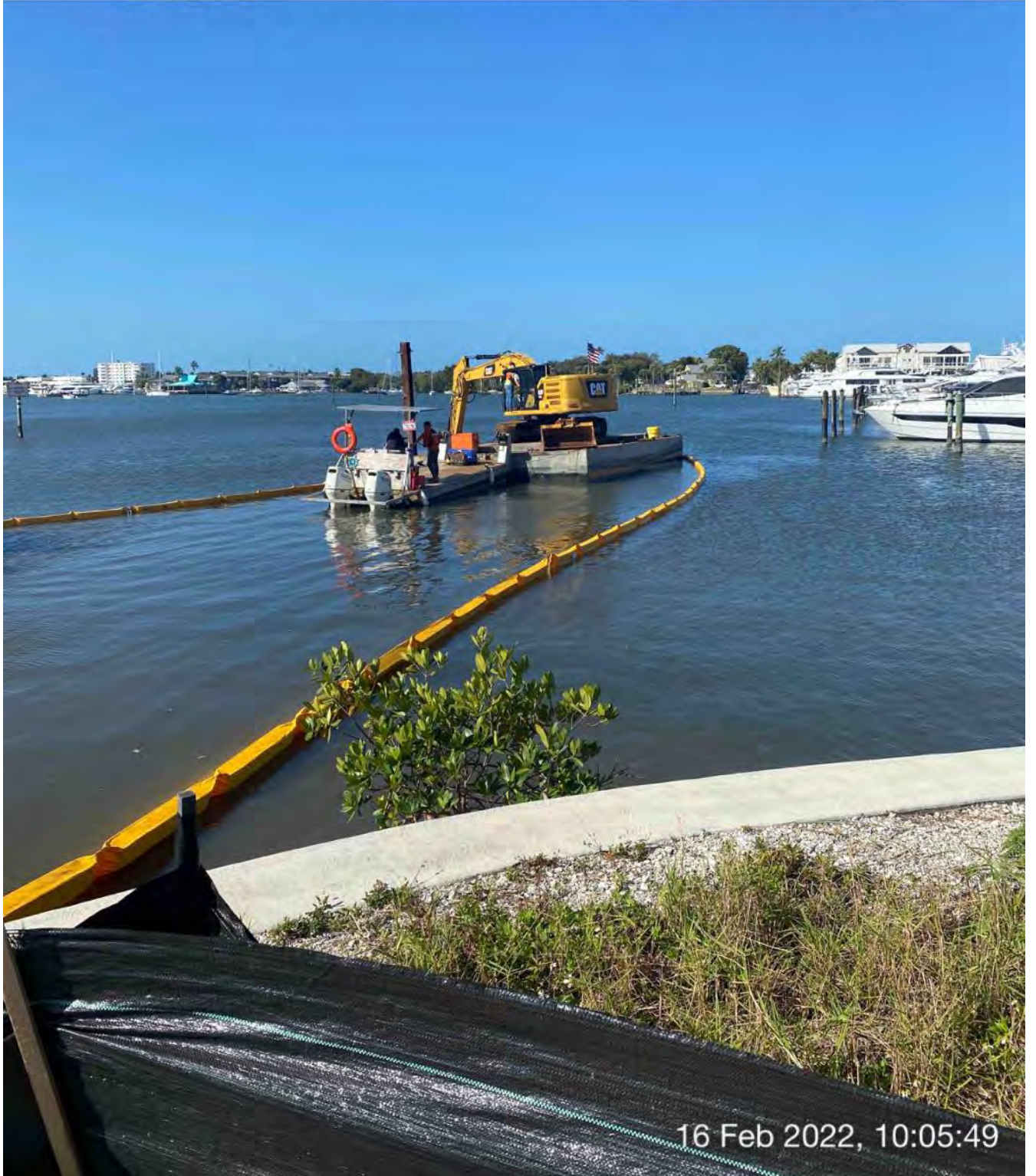
☀ 264°W (T) ☉ 26°8'9"N, 81°47'4"W ±13ft ▲ 5ft



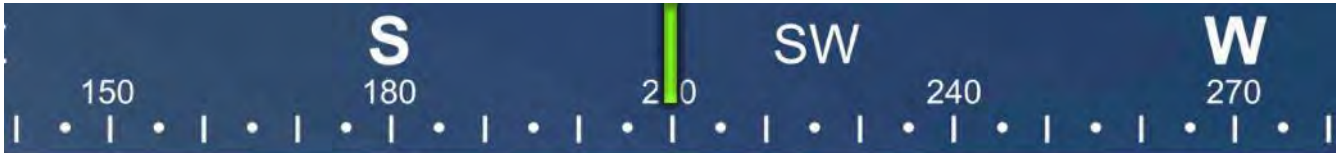
16 Feb 2022, 08:30:17

323 excavator lifting spud to allow push boat to mobilize barge at station 11+00 in Canal BB-BB

S 180 SW 210 240 W 270 300 NW
☀ 248°W (T) ☉ 26°8'13"N, 81°47'16"W ±29ft ▲ 8ft



Turbidity curtain around 323 excavator and push boat at station 0+00 in Canal CC-CC

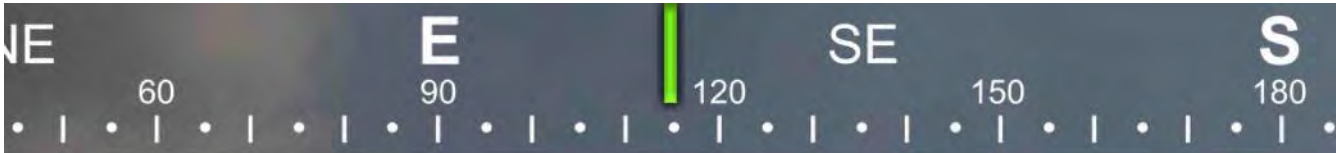


☀ 210°SW (T) ● 26°8'14"N, 81°47'16"W ±22ft ▲ 8ft



16 Feb 2022 10:39:20

323 excavator removing material from station 0+00 and transferring to hopper



☉ 115°SE (T) ● 26°8'13"N, 81°47'16"W ±13ft ▲ 7ft



16 Feb 2022, 13:43:13

326 excavator transferring material from hopper to dewatering site at 1300 Curlew Avenue



☉ 211°SW (T) ● 26°8'14"N, 81°47'16"W ±39ft ▲ 8ft



323 excavator removing material from station 0+50 and transferring to hopper

N 0 30 NE 60 E 90
☀ 40°NE (T) ☉ 26°8'13"N, 81°47'16"W ±22ft ▲ 7ft



Mechanic inspecting 326 excavator

E SE S
60 90 120 150 180
☀ 125°SE (T) ● 26°8'13"N, 81°47'16"W ±29ft ▲ 8ft



Hopper full of removed material from Canal CC-CC

NE E SE
30 60 90 120 150

☀ 100°E (T) ☉ 26°8'13"N, 81°47'16"W ±13ft ▲ 10ft



323 excavator transferring material from hopper to dewatering site at 1300 Curlew Avenue

E 60 90 120 SE 150 180 S
☉ 119°SE (T) ● 26°8'13"N, 81°47'16"W ±13ft ▲ 8ft



323 excavator transferring material from hopper to dewatering site at 1300 Curlew Avenue



DAILY REPORT OF CONSTRUCTION
 21-036 EAST NAPLES BAY
 DREDGING AND ROCK REMOVAL PROJECT



Date: 02/17/2022			
Inspectors: SB	Stantec PIN: 2028113191		Accidents <input type="checkbox"/> Yes <input checked="" type="checkbox"/> No
Day of Week: Thursday	Contract Day: 123/365	Week: 18	Accident Report #: N/A
High Temp (°F): 84°F	AM Conditions: Sunny	PM Conditions: Sunny	High Tide: 2:01 PM +2.2'
Low Temp (°F): 69°F	Wind: 9 mph	Wind: 16 mph	Low Tide: 7:50 AM -0.5'
Canal Worked In: CC-CC	Stations Worked Between:	0+00 to 1+50	

General
<p>#1 – Prime Contractor – Quality Enterprises:</p> <ul style="list-style-type: none"> • Contractor has an excavator mounted on a barge, a push boat, a support boat, and a hopper staged in Canal CC-CC at station 1+50. In addition, Contractor has a long-reach excavator, a front end loader, a water tank, and two fuel cubes staged on the property located at 1300 Curlew Avenue, Naples, FL, 34102. • Contractor repaired silt fence around the property at 1300 Curlew Avenue. • Contractor used push boat to move the barge from station 1+50 to 1+00. • Contractor used push boat to install turbidity curtain across the mouth of Canal CC-CC. • Contractor used 323 excavator to check elevations, grind rock, and remove material between stations 0+00 to 1+00. Contractor placed removed material in the hopper. • Small dump truck came to the site at 1300 Curlew Avenue to pick up trash. • Contractor used push boat to position barge as necessary for grinding and removing material, for moving the hopper to transfer material, and to attach and remove the turbidity curtain as necessary.

Contractor(s) and Personnel										
#	Name	Type	#	Hrs.	Type	#	Hrs.	Type	#	Hrs.
1	Prime: Quality Enterprises	PM	0	0	Boat Captain	1	9	Mechanic	0	0
		Excavator Operator	0	0	Truck Driver	0	0	Assistant	1	9
		Technician	0	0	Superintendent	1	5	VP	0	0

Equipment					
Cont/ Sub #	Equipment ID	Description	# Pieces	# Used	Total Hours Used
1	N/A	Barge	1	1	6
1	CAT 323	Excavator	1	1	6
1	CAT 326	Excavator	1	0	0
1	02016	Front End Loader	1	0	0
1	FL6223TB	Push Boat	1	1	6
1	FL2474PP	Support Boat	1	0	0
1	N3758Z	Fuel Truck	0	0	0
1	P9457E	Water Truck	0	0	0
1	725RZM	Water Tank	1	0	0
1	Z67EAZ	Small Dump truck	1	1	1
1	MB35DQ	Dump truck	0	0	0
1	MB28DQ	Dump truck	0	0	0
1	MB26DQ	Utility Truck	0	0	0
1	DRHS18	Utility Truck	0	0	0
1	N9524Z	Transport Truck	0	0	0

Visitors			
Name	Company	Hours at Job Site	
		From:	To:
Jeremy	Angle Right	2:40 pm	2:45 pm

Inspector Name and Position	Hours at Job Site/Office		Total Hours
Sam Boyd, EIT	From: 8:00 AM	To: 4:30 PM	8.5

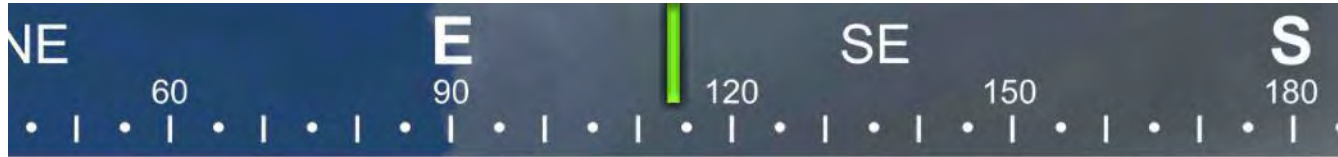


☉ 182°S (T) ☉ 26°8'14"N, 81°47'15"W ±13ft ▲ 9ft



17 Feb 2022, 08:07:29

Removed material at dewatering site at 1300 Curlew Avenue



☀ 114°SE (T) ● 26°8'13"N, 81°47'16"W ±26ft ▲ 8ft



323 excavator lifting spud to allow push boat to mobilize barge at station 1+50

S 150 180 210 SW 240 W 270

☀ 215°SW (T) ☉ 26°8'13"N, 81°47'16"W ±13ft ▲ 11ft



17 Feb 2022, 13:55:43

323 excavator removing material from station 0+50 and transferring to hopper

E S SW W
150 180 210 240 270
☀ 206°SW (T) ☉ 26°8'13"N, 81°47'16"W ±13ft ▲ 12ft



323 excavator removing material from station 0+50 and transferring to hopper

SE

150

S

180

210

SW

240

W

270

☀ 198°S (T) ☉ 26°8'13"N, 81°47'16"W ±13ft ▲ 9ft



323 excavator with Epiroc grinder on barge at station 0+75

SE S SW
20 150 180 210 240

☀ 190°S (T) ☉ 26°8'13"N, 81°47'16"W ±16ft ▲ 9ft



17 Feb 2022, 14:46:33

323 excavator grinding rock at station 0+50

E
S 150 180 210 240 270 W
SW
☀ 209°SW (T) ☉ 26°8'13"N, 81°47'16"W ±13ft ▲ 8ft



17 Feb 2022, 15:41:22

323 excavator grinding rock at station 0+50



DAILY REPORT OF CONSTRUCTION
 21-036 EAST NAPLES BAY
 DREDGING AND ROCK REMOVAL PROJECT



Date: 02/18/2022			
Inspectors: SB	Stantec PIN: 2028113191		Accidents <input type="checkbox"/> Yes <input checked="" type="checkbox"/> No
Day of Week: Friday	Contract Day: 124/365	Week: 18	Accident Report #: N/A
High Temp (°F): 82°F	AM Conditions: Foggy	PM Conditions: Sunny	High Tide: 2:27 PM +2.2'
Low Temp (°F): 68°F	Wind: 2 mph	Wind: 13 mph	Low Tide: 8:23 AM -0.3'
Canal Worked In: CC-CC	Stations Worked Between:	0+50 to 2+00	

General	
#1 – Prime Contractor – Quality Enterprises:	
<ul style="list-style-type: none"> • Contractor has an excavator mounted on a barge, a push boat, a support boat, and a hopper staged in Canal CC-CC at station 1+00. In addition, Contractor has a long-reach excavator, a front end loader, a water tank, and two fuel cubes staged on the property located at 1300 Curlew Avenue, Naples, FL, 34102. • Contractor installed turbidity curtain across the mouth of Canal CC-CC. • Contractor greased 326 excavator. • Contractor used 323 excavator to check elevations, grind rock, and remove material between stations 0+50 to 2+00. Contractor placed removed material in the hopper. • Contractor moved turbidity curtain to allow Canal CC-CC residents to pass. • Contractor used 326 excavator to transfer 2 hoppers of material from the hopper to the dewatering site at 1300 Curlew Avenue. Contractor redistributed the removed material. • Contractor used push boat to position barge as necessary for grinding and removing material, for moving the hopper to transfer material, and to attach and remove the turbidity curtain as necessary. • Contractor used water tank to clean barge, 323 excavator, hopper, push boat, and 326 excavator. 	

Contractor(s) and Personnel										
#	Name	Type	#	Hrs.	Type	#	Hrs.	Type	#	Hrs.
1	Prime: Quality Enterprises	PM	0	0	Boat Captain	1	9	Mechanic	0	0
		Excavator Operator	0	0	Truck Driver	0	0	Assistant	1	9
		Technician	0	0	Superintendent	1	5	VP	0	0

Equipment					
Cont/ Sub #	Equipment ID	Description	# Pieces	# Used	Total Hours Used
1	N/A	Barge	1	1	9
1	CAT 323	Excavator	1	1	9
1	CAT 326	Excavator	1	1	5
1	02016	Front End Loader	1	0	0
1	FL6223TB	Push Boat	1	1	9
1	FL2474PP	Support Boat	1	0	0
1	N3758Z	Fuel Truck	0	0	0
1	P9457E	Water Truck	0	0	0
1	725RZM	Water Tank	1	1	1
1	Z67EAZ	Small Dump truck	0	0	0
1	MB35DQ	Dump truck	0	0	0
1	MB28DQ	Dump truck	0	0	0
1	MB26DQ	Utility Truck	0	0	0
1	DRHS18	Utility Truck	0	0	0
1	N9524Z	Transport Truck	0	0	0

Visitors			
Name	Company	Hours at Job Site	
		From:	To:
Unknown	JW Craft Portable Toilets	3:30 pm	3:45 pm

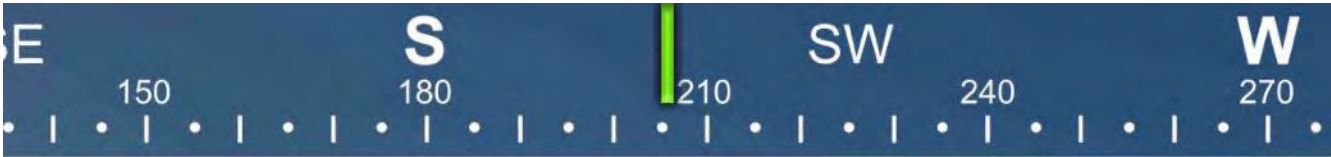
Inspector Name and Position	Hours at Job Site/Office		Total Hours
Sam Boyd, EIT	From: 8:15 AM	To: 4:15 PM	8.0



☉ 233°SW (T) ☉ 26°8'13"N, 81°47'15"W ±13ft ▲ 10ft



323 excavator lifting spud to allow push boat to mobilize barge at station 1+00



☉ 206°SW (T) ☉ 26°8'13"N, 81°47'16"W ±32ft ▲ 9ft



18 Feb 2022, 08:36:34

323 excavator removing material from station 0+75 and transferring to hopper

SE 150 S 180 SW 240 W 270
☀ 205°SW (T) ☉ 26°8'13"N, 81°47'16"W ±13ft ▲ 9ft



18 Feb 2022, 08:37:27

323 excavator removing material from station 1+00 and transferring to hopper



☀ 176°S (T) ● 26°8'13"N, 81°47'15"W ±42ft ▲ 9ft



18 Feb 2022, 09:56:11

Changing attachment from bucket to Epiroc grinder on the 323 excavator at station 1+50

E 90 SE 120 150 S 180 210
☀ 142°SE (T) ☉ 26°8'13"N, 81°47'15"W ±26ft ▲ 8ft



Canal CC-CC resident entering the canal

SE S SW
120 150 180 210 240

☀ 170°S (T) ☉ 26°8'13"N, 81°47'16"W ±9ft ▲ 9ft



323 excavator lifting spud to allow push boat to mobilize barge at station 1+50



☉ 142°SE (T) ☉ 26°8'13"N, 81°47'16"W ±13ft ▲ 8ft



323 excavator grinding rock at station 1+00

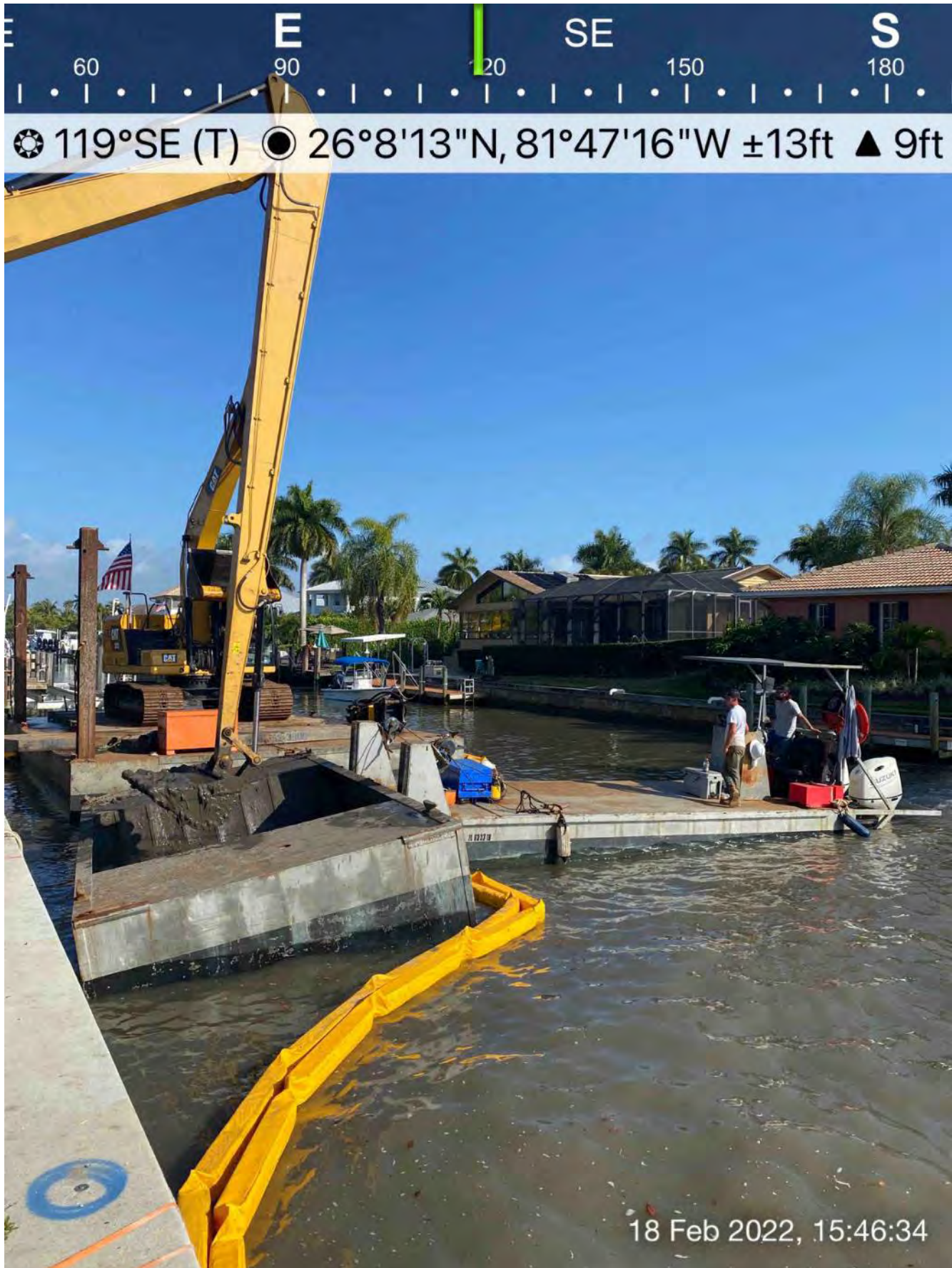


☀ 140°SE (T) ● 26°8'13"N, 81°47'16"W ±13ft ▲ 9ft



18 Feb 2022, 14:14:57

323 excavator removing material from station 1+50 and transferring to hopper



326 excavator transferring removed material from hopper to dewatering site at 1300 Curlew Avenue

NE E SE
30 60 90 120 150
☉ 92°E (T) ☉ 26°8'13"N, 81°47'16"W ±13ft ▲ 10ft



326 excavator transferring removed material from hopper to dewatering site at 1300 Curlew Avenue