



# WEEKLY SUMMARY REPORT – CONTRACT WEEK 14

21-036 EAST NAPLES BAY

## DREDGING AND ROCK REMOVAL PROJECT



Date: <b>1/17/2022 to 1/21/2022</b>			
Inspectors: <b>Sam Boyd</b>	Stantec PIN: <b>2028113191</b>		Accidents <input type="checkbox"/> Yes <input checked="" type="checkbox"/> No
Days of Week: <b>Monday to Friday</b>	Contract Days: <b>92 to 96</b>	Total Days: <b>365</b>	Accident Report #: <b>N/A</b>
Canal(s) Worked In: <b>BB-BB</b>	Stations Worked Between: <b>4+25 to 5+00</b>		

### General

#### Remarks

#### #1 – Prime Contractor – Quality Enterprises:

##### Monday 01-17-2021:

- Contractor has an excavator mounted on a barge staged in Canal BB-BB at station 4+25. Contractor has a hopper, a push boat, and a support boat staged in the Canal CC-CC at station 1+50. Contractor also has a long-reach excavator, a front end loader, a water tank, and two fuel cubes staged on the property located at 1300 Curlew Avenue, Naples, FL, 34102.
- Contractor installed turbidity curtain across the mouth of Canal BB-BB.
- Contractor used 323 excavator to check bottom elevations and grind rock from stations 4+25 to 4+50.
- Contractor used push boat to position the barge as necessary for checking elevations and grinding material.
- Dump truck came to lot at 1300 Curlew Avenue.
- Contractor used front end loader to transfer 4 truckloads of material from dewatering site to the dump truck.
- Dump truck took material off the site at 1300 Curlew Avenue.
- Smaller dump truck came to the site at 1300 Curlew Avenue.
- Contractor used front end loader to clean up the site and transfer trash to the smaller dump truck.
- Contractor used 326 excavator to transfer small fuel cube to the push boat.
- Push boat transported fuel cube from 1300 Curlew Avenue to the barge in Canal BB-BB at station 4+25.
- Contractor refilled 323 excavator with small fuel cube.
- Contractor brought small cube back to 1300 Curlew Avenue where it was placed back on the south end of the lot with 326 excavator.

##### Tuesday 01-18-2021:

- Contractor has an excavator mounted on a barge staged in Canal BB-BB at station 4+25. Contractor has a hopper, a push boat, and a support boat staged in the Canal CC-CC at station 1+50. Contractor also has a long-reach excavator, a front end loader, a water tank, and two fuel cubes staged on the property located at 1300 Curlew Avenue, Naples, FL, 34102.
- Contractor installed turbidity curtain across the mouth of Canal BB-BB.
- Contractor used 323 excavator to check bottom elevations and grind rock from stations 4+25 to 4+50.
- Contractor used push boat to position the barge as necessary for checking elevations and grinding material.



**WEEKLY SUMMARY REPORT – CONTRACT WEEK 14**  
**21-036 EAST NAPLES BAY**  
**DREDGING AND ROCK REMOVAL PROJECT**



- Dump truck came to lot at 1300 Curlew Avenue.
- Contractor used front end loader to transfer 5 truckloads of material from dewatering site to the dump truck.
- Dump truck took material off the site at 1300 Curlew Avenue.

Wednesday 01-19-2021:

- Contractor has an excavator mounted on a barge staged in Canal BB-BB at station 4+25. Contractor has a hopper, a push boat, and a support boat staged in the Canal CC-CC at station 1+50. Contractor also has a long-reach excavator, a front end loader, a water tank, and two fuel cubes staged on the property located at 1300 Curlew Avenue, Naples, FL, 34102.
- Contractor installed turbidity curtain across the mouth of Canal BB-BB.
- Contractor used 323 excavator to check bottom elevations and grind rock from stations 4+25 to 4+50.
- Contractor used push boat to position the barge as necessary for checking elevations and grinding material.
- Contractor used support boat for transportation to and from the barge in Canal BB-BB.
- Contractor fixed silt fence around the property at 1300 Curlew Avenue.
- Dump truck came to lot at 1300 Curlew Avenue.
- Contractor used front end loader to transfer 5 truckloads of material from dewatering site to the dump truck.
- Dump truck took material off the site at 1300 Curlew Avenue.

Thursday 01-20-2021:

- Contractor has an excavator mounted on a barge staged in Canal BB-BB at station 4+50. Contractor has a hopper, a push boat, and a support boat staged in the Canal CC-CC at station 1+50. Contractor also has a long-reach excavator, a front end loader, a water tank, and two fuel cubes staged on the property located at 1300 Curlew Avenue, Naples, FL, 34102.
- Contractor installed turbidity curtain across the mouth of Canal BB-BB.
- Contractor used 323 excavator to check bottom elevations and grind rock from stations 4+50 to 4+75.
- Contractor used push boat to position the barge as necessary for checking elevations and grinding material.
- Contractor used support boat for transportation to and from the barge in Canal BB-BB.
- Dump truck came to lot at 1300 Curlew Avenue.
- Contractor used front end loader to transfer 4 truckloads of material from dewatering site to the dump truck.
- Dump truck took material off the site at 1300 Curlew Avenue and transported to QE property at Veterans Memorial Blvd, Naples, FL, 34110.
- Contractor refilled small fuel cube with large fuel cube and transported small fuel cube to push boat with 326 excavator.
- Push boat transported fuel cube to the barge at station 4+50 in Canal BB-BB where it was used to refuel 323 excavator.



**WEEKLY SUMMARY REPORT – CONTRACT WEEK 14**  
**21-036 EAST NAPLES BAY**  
**DREDGING AND ROCK REMOVAL PROJECT**



- Push boat transported small fuel cube back to site where 326 excavator lifted it back to the southwest corner of 1300 Curlew Avenue.
- Utility truck came to 1300 Curlew Avenue to fix hydraulic hose on front end loader.

**Friday 01-21-2021:**

- Contractor has an excavator mounted on a barge staged in Canal BB-BB at station 4+50. Contractor has a hopper, a push boat, and a support boat staged in the Canal CC-CC at station 1+50. Contractor also has a long-reach excavator, a front end loader, a water tank, and two fuel cubes staged on the property located at 1300 Curlew Avenue, Naples, FL, 34102.
- Contractor installed turbidity curtain across the mouth of Canal BB-BB.
- Contractor used 323 excavator to check bottom elevations and grind rock from stations 4+75 to 5+00.
- Contractor used push boat to position the barge as necessary for checking elevations and grinding material.
- Contractor used support boat for transportation to and from the barge in Canal BB-BB.
- Dump truck came to lot at 1300 Curlew Avenue with pebbles.
- Contractor distributed to the pebbles with front end loader across the entrance of 1300 Curlew Avenue for soil retention.
- Another dump truck came to the lot at 1300 Curlew Avenue.
- Contractor used front end loader to transfer 4 truckloads of material from dewatering site to the dump trucks.
- Dump trucks took material off the site at 1300 Curlew Avenue.
- Smaller dump truck came to the site at 1300 Curlew Avenue.
- Contractor used front end loader to clean up the site and transfer trash to the smaller dump truck.
- Contractor used push boat to transport barge and 323 excavator back to station 1+50 in Canal CC-CC for the weekend.
- Contractor used water tank to clean the equipment.

***Note: Daily reports with pictures attached for the week.***



**DAILY REPORT OF CONSTRUCTION**  
 21-036 EAST NAPLES BAY  
 DREDGING AND ROCK REMOVAL PROJECT



Date: <b>01/17/2022</b>			
Inspectors: <b>SB</b>	Stantec PIN: <b>2028113191</b>		Accidents <input type="checkbox"/> Yes <input checked="" type="checkbox"/> No
Day of Week: <b>Monday</b>	Contract Day: <b>92/365</b>	Week: <b>14</b>	Accident Report #: <b>N/A</b>
High Temp (°F): <b>69°F</b>	AM Conditions: <b>Cloudy</b>	PM Conditions: <b>Sunny</b>	High Tide: <b>1:41 PM +1.9'</b>
Low Temp (°F): <b>56°F</b>	Wind: <b>15 mph</b>	Wind: <b>17 mph</b>	Low Tide: <b>7:06 AM -0.7'</b>
Canal Worked In: <b>BB-BB</b>	Stations Worked Between:	<b>4+25 to 4+50</b>	

<b>General</b>	
<b>#1 – Prime Contractor – Quality Enterprises:</b>	
<ul style="list-style-type: none"> <li>• Contractor has an excavator mounted on a barge staged in Canal BB-BB at station 4+25. Contractor has a hopper, a push boat, and a support boat staged in the Canal CC-CC at station 1+50. Contractor also has a long-reach excavator, a front end loader, a water tank, and two fuel cubes staged on the property located at 1300 Curlew Avenue, Naples, FL, 34102.</li> <li>• Contractor installed turbidity curtain across the mouth of Canal BB-BB.</li> <li>• Contractor used 323 excavator to check bottom elevations and grind rock from stations 4+25 to 4+50.</li> <li>• Contractor used push boat to position the barge as necessary for checking elevations and grinding material.</li> <li>• Dump truck came to lot at 1300 Curlew Avenue.</li> <li>• Contractor used front end loader to transfer 4 truckloads of material from dewatering site to the dump truck.</li> <li>• Dump truck took material off the site at 1300 Curlew Avenue.</li> <li>• Smaller dump truck came to the site at 1300 Curlew Avenue.</li> <li>• Contractor used front end loader to clean up the site and transfer trash to the smaller dump truck.</li> <li>• Contractor used 326 excavator to transfer small fuel cube to the push boat.</li> <li>• Push boat transported fuel cube from 1300 Curlew Avenue to the barge in Canal BB-BB at station 4+25.</li> <li>• Contractor refilled 323 excavator with small fuel cube.</li> <li>• Contractor brought small cube back to 1300 Curlew Avenue where it was placed back on the south end of the lot with 326 excavator.</li> </ul>	

Contractor(s) and Personnel										
#	Name	Type	#	Hrs.	Type	#	Hrs.	Type	#	Hrs.
1	Prime: <b>Quality Enterprises</b>	PM	0	0	Boat Captain	1	9	Foreman	0	0
		Excavator Operator	1	7	Truck Driver	2	6	Assistant	1	9
		Technician	0	0	Superintendent	1	9	VP	0	0

Equipment					
Cont/ Sub #	Equipment ID	Description	# Pieces	# Used	Total Hours Used
1	N/A	Barge	1	1	9
1	CAT 323	Excavator	1	1	9
1	CAT 326	Excavator	1	1	0.5
1	02016	Front End Loader	1	1	6
1	FL6223TB	Push Boat	1	1	6
1	FL2474PP	Support Boat	1	0	0
1	N3758Z	Fuel Truck	0	0	0
1	P9457E	Water Truck	0	0	0
1	725RZM	Water Tank	0	0	0
1	Z67EAZ	Small Dump truck	1	1	0.5
1	MB35DQ	Dump truck	1	1	7
1	MB38DQ	Utility Truck	0	0	0
1	5178CR	Transport Truck	0	0	0

Visitors			
Name	Company	Hours at Job Site	
		From:	To:

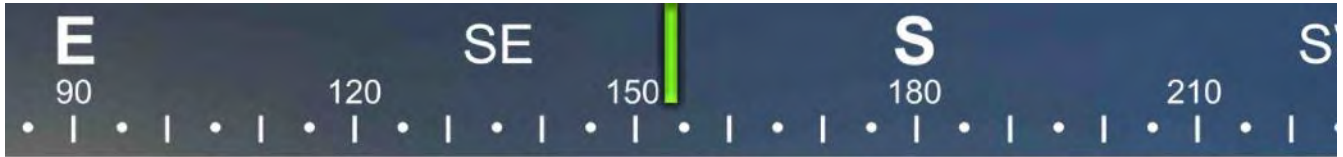
Inspector Name and Position	Hours at Job Site/Office		Total Hours
Sam Boyd, EIT	From: 8:00 AM	To: 4:30 PM	8.5

S 180 210 SW 240 W 270  
☀ 223°SW (T) ☉ 26°8'9"N, 81°47'13"W ±36ft ▲ 8ft



17 Jan 2022, 08:20:51

Turbidity curtain across the mouth of Canal BB-BB



☀ 154°SE (T)    ● 26°8'9"N, 81°47'13"W ±55ft    ▲ 9ft



17 Jan 2022, 08:21:34

323 excavator grinding rock at station 4+25

SW W NW  
210 240 270 300 330  
☀ 273°W (T) ☉ 26°8'14"N, 81°47'15"W ±26ft ▲ 9ft



17 Jan 2022, 08:27:56

Front end loader transferring material from dewatering site to dump truck at 1300 Curlew Avenue



S SW W  
50 180 210 240 270

☀ 219°SW (T) ● 26°8'15"N, 81°47'15"W ±49ft ▲ 8ft



17 Jan 2022, 08:28:56

Front end loader transferring material from dewatering site to dump truck at 1300 Curlew Avenue

SW W NW  
210 240 270 300 330  
☀ 277°W (T) ☉ 26°8'15"N, 81°47'15"W ±13ft ▲ 8ft



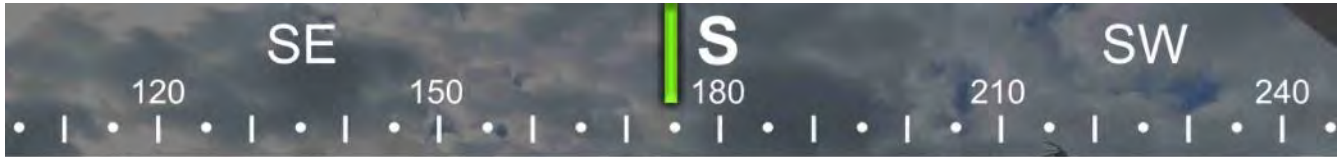
Front end loader transferring material from dewatering site to dump truck at 1300 Curlew Avenue



☀ 56°NE (T) ☉ 26°8'14"N, 81°47'16"W ±19ft ▲ 8ft



Front end loader transferring material from dewatering site to dump truck at 1300 Curlew Avenue



☀ 176°S (T) ☉ 26°8'9"N, 81°47'12"W ±19ft ▲ 8ft



17 Jan 2022, 09:38:38

323 excavator grinding rock at station 4+25

W NW N  
240 270 300 330 0  
☀ 305°NW (T) ☉ 26°8'14"N, 81°47'15"W ±13ft ▲ 11ft



Front end loader transferring material from dewatering site to dump truck at 1300 Curlew Avenue

N 0 30 60 90 E  
330 0 30 60 90  
☀ 33°NE (T) ☉ 26°8'14"N, 81°47'16"W ±29ft ▲ 8ft



17 Jan 2022, 11:20:19

Full dump truck of material



☀ 21°N (T)    ☉ 26°8'8"N, 81°47'13"W ±13ft    ▲ 10ft



323 excavator grinding rock at station 4+50

E 90 SE 150 S 180  
60 90 120 150 180  
☀ 129°SE (T) ☉ 26°8'9"N, 81°47'13"W ±42ft ▲ 7ft



323 excavator grinding rock at station 4+50



SW W NW  
0 210 240 270 300  
☉ 252°W (T) ☉ 26°8'13"N, 81°47'16"W ±108ft ▲ 8ft



Push boat traveling from 1300 Curlew Avenue to barge in Canal BB-BB

E  
0  
SE 120 150 180 210 S SW

☀ 162°S (T) ☉ 26°8'9"N, 81°47'13"W ±32ft ▲ 9ft



Refueling 323 excavator with small fuel cube



**DAILY REPORT OF CONSTRUCTION**  
 21-036 EAST NAPLES BAY  
 DREDGING AND ROCK REMOVAL PROJECT



Date: <b>01/18/2022</b>			
Inspectors: <b>SB</b>	Stantec PIN: <b>2028113191</b>		Accidents <input type="checkbox"/> Yes <input checked="" type="checkbox"/> No
Day of Week: <b>Tuesday</b>	Contract Day: <b>93/365</b>	Week: <b>14</b>	Accident Report #: <b>N/A</b>
High Temp (°F): <b>68°F</b>	AM Conditions: <b>Sunny</b>	PM Conditions: <b>Sunny</b>	High Tide: <b>2:13 PM +1.9'</b>
Low Temp (°F): <b>50°F</b>	Wind: <b>6 mph</b>	Wind: <b>9 mph</b>	Low Tide: <b>7:42 AM -0.7'</b>
Canal Worked In: <b>BB-BB</b>	Stations Worked Between:	<b>4+25 to 4+50</b>	

<b>General</b>
<p><b>#1 – Prime Contractor – Quality Enterprises:</b></p> <ul style="list-style-type: none"> <li>• Contractor has an excavator mounted on a barge staged in Canal BB-BB at station 4+25. Contractor has a hopper, a push boat, and a support boat staged in the Canal CC-CC at station 1+50. Contractor also has a long-reach excavator, a front end loader, a water tank, and two fuel cubes staged on the property located at 1300 Curlew Avenue, Naples, FL, 34102.</li> <li>• Contractor installed turbidity curtain across the mouth of Canal BB-BB.</li> <li>• Contractor used 323 excavator to check bottom elevations and grind rock from stations 4+25 to 4+50.</li> <li>• Contractor used push boat to position the barge as necessary for checking elevations and grinding material.</li> <li>• Dump truck came to lot at 1300 Curlew Avenue.</li> <li>• Contractor used front end loader to transfer 5 truckloads of material from dewatering site to the dump truck.</li> <li>• Dump truck took material off the site at 1300 Curlew Avenue.</li> </ul>

Contractor(s) and Personnel										
#	Name	Type	#	Hrs.	Type	#	Hrs.	Type	#	Hrs.
1	Prime: <b>Quality Enterprises</b>	PM	0	0	Boat Captain	1	9	Foreman	0	0
		Excavator Operator	1	9	Truck Driver	1	6	Assistant	1	9
		Technician	0	0	Superintendent	1	4	VP	0	0

Equipment					
Cont/ Sub #	Equipment ID	Description	# Pieces	# Used	Total Hours Used
1	N/A	Barge	1	1	9
1	CAT 323	Excavator	1	1	9
1	CAT 326	Excavator	1	0	0
1	02016	Front End Loader	1	1	4
1	FL6223TB	Push Boat	1	1	2
1	FL2474PP	Support Boat	1	0	0
1	N3758Z	Fuel Truck	0	0	0
1	P9457E	Water Truck	0	0	0
1	725RZM	Water Tank	0	0	0
1	Z67EAZ	Small Dump truck	0	0	0
1	MB35DQ	Dump truck	1	1	6
1	MB38DQ	Utility Truck	0	0	0
1	5178CR	Transport Truck	0	0	0

Visitors			
Name	Company	Hours at Job Site	
		From:	To:

Inspector Name and Position	Hours at Job Site/Office		Total Hours
Sam Boyd, EIT	From: 7:45 AM	To: 4:00 PM	8.25

SE 150 S 180 SW 210 W 270

☉ 204°SW (T) ● 26°8'14"N, 81°47'16"W ±42ft ▲ 8ft



18 Jan 2022, 07:47:04

Large rocks removed from Canal CC-CC at site at 1300 Curlew Avenue

SE S SW  
120 150 180 210 240

☀ 182°S (T) ☉ 26°8'14"N, 81°47'15"W ±49ft ▲ 8ft



Removed material at dewatering site at 1300 Curlew Avenue



18 Jan 2022, 07:58:18

323 excavator grinding rock at station 4+50



☀ 347°N (T) ● 26°8'9"N, 81°47'13"W ±39ft ▲ 8ft



323 excavator grinding rock at station 4+50





☀ 261°W (T)    ● 26°8'9"N, 81°47'13"W ±39ft    ▲ 8ft



18 Jan 2022, 08:04:57

Turbidity curtain across the mouth of Canal BB-BB



323 excavator grinding rock at station 4+50

SW

240

W

270

NW

300

330

☉ 287°W (T) ☉ 26°8'14"N, 81°47'15"W ±19ft ▲ 7ft



Front end loader transferring material from dewatering site to dump truck at 1300 Curlew Avenue

S 180 SW 210 W 270  
50 180 210 240 270  
☀ 221°SW (T) ● 26°8'15"N, 81°47'15"W ±22ft ▲ 7ft



Front end loader transferring material from dewatering site to dump truck at 1300 Curlew Avenue

SW W NW  
10 240 270 300 330  
☉ 280°W (T) ☉ 26°8'14"N, 81°47'15"W ±13ft ▲ 8ft



Front end loader transferring material from dewatering site to dump truck at 1300 Curlew Avenue

SE S SW  
120 150 180 210  
☀ 166°S (T) ☉ 26°8'9"N, 81°47'13"W ±13ft ▲ 7ft



18 Jan 2022, 15:35:09

323 excavator grinding rock at station 4+50



**DAILY REPORT OF CONSTRUCTION**  
 21-036 EAST NAPLES BAY  
 DREDGING AND ROCK REMOVAL PROJECT



Date: <b>01/19/2022</b>			
Inspectors: <b>SB</b>	Stantec PIN: <b>2028113191</b>		Accidents <input type="checkbox"/> Yes <input checked="" type="checkbox"/> No
Day of Week: <b>Wednesday</b>	Contract Day: <b>94/365</b>	Week: <b>14</b>	Accident Report #: <b>N/A</b>
High Temp (°F): <b>75°F</b>	AM Conditions: <b>Sunny</b>	PM Conditions: <b>Sunny</b>	High Tide: <b>2:46 PM +2.0'</b>
Low Temp (°F): <b>48°F</b>	Wind: <b>7 mph</b>	Wind: <b>10 mph</b>	Low Tide: <b>8:18 AM -0.6'</b>
Canal Worked In: <b>BB-BB</b>	Stations Worked Between:	<b>4+25 to 4+50</b>	

<b>General</b>	
<b>#1 – Prime Contractor – Quality Enterprises:</b>	
<ul style="list-style-type: none"> <li>• Contractor has an excavator mounted on a barge staged in Canal BB-BB at station 4+25. Contractor has a hopper, a push boat, and a support boat staged in the Canal CC-CC at station 1+50. Contractor also has a long-reach excavator, a front end loader, a water tank, and two fuel cubes staged on the property located at 1300 Curlew Avenue, Naples, FL, 34102.</li> <li>• Contractor installed turbidity curtain across the mouth of Canal BB-BB.</li> <li>• Contractor used 323 excavator to check bottom elevations and grind rock from stations 4+25 to 4+50.</li> <li>• Contractor used push boat to position the barge as necessary for checking elevations and grinding material.</li> <li>• Contractor used support boat for transportation to and from the barge in Canal BB-BB.</li> <li>• Contractor fixed silt fence around the property at 1300 Curlew Avenue.</li> <li>• Dump truck came to lot at 1300 Curlew Avenue.</li> <li>• Contractor used front end loader to transfer 5 truckloads of material from dewatering site to the dump truck.</li> <li>• Dump truck took material off the site at 1300 Curlew Avenue.</li> </ul>	

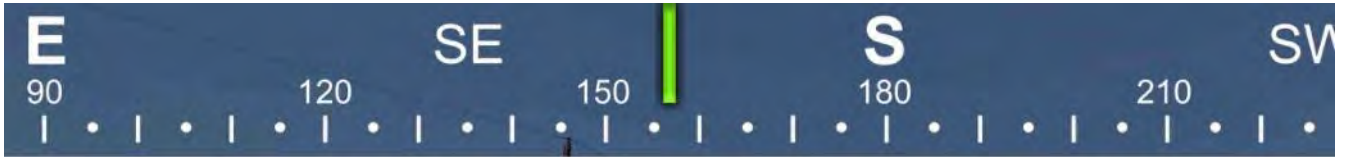
Contractor(s) and Personnel										
#	Name	Type	#	Hrs.	Type	#	Hrs.	Type	#	Hrs.
1	Prime: <b>Quality Enterprises</b>	PM	0	0	Boat Captain	1	9	Foreman	0	0
		Excavator Operator	1	9	Truck Driver	1	9	Assistant	1	9
		Technician	0	0	Superintendent	1	9	VP	0	0

Equipment					
Cont/ Sub #	Equipment ID	Description	# Pieces	# Used	Total Hours Used
1	N/A	Barge	1	1	9
1	CAT 323	Excavator	1	1	9
1	CAT 326	Excavator	1	0	0
1	02016	Front End Loader	1	1	4
1	FL6223TB	Push Boat	1	1	2
1	FL2474PP	Support Boat	1	1	2
1	N3758Z	Fuel Truck	0	0	0
1	P9457E	Water Truck	0	0	0
1	725RZM	Water Tank	0	0	0
1	Z67EAZ	Small Dump truck	0	0	0
1	MB35DQ	Dump truck	1	1	9
1	MB38DQ	Utility Truck	0	0	0
1	5178CR	Transport Truck	0	0	0

Visitors			
Name	Company	Hours at Job Site	
		From:	To:

Inspector Name and Position	Hours at Job Site/Office		Total Hours
Sam Boyd, EIT	From: 7:45 AM	To: 4:15 PM	8.5





☀ 157°SE (T) ● 26°8'15"N, 81°47'7"W ±13ft ▲ 8ft

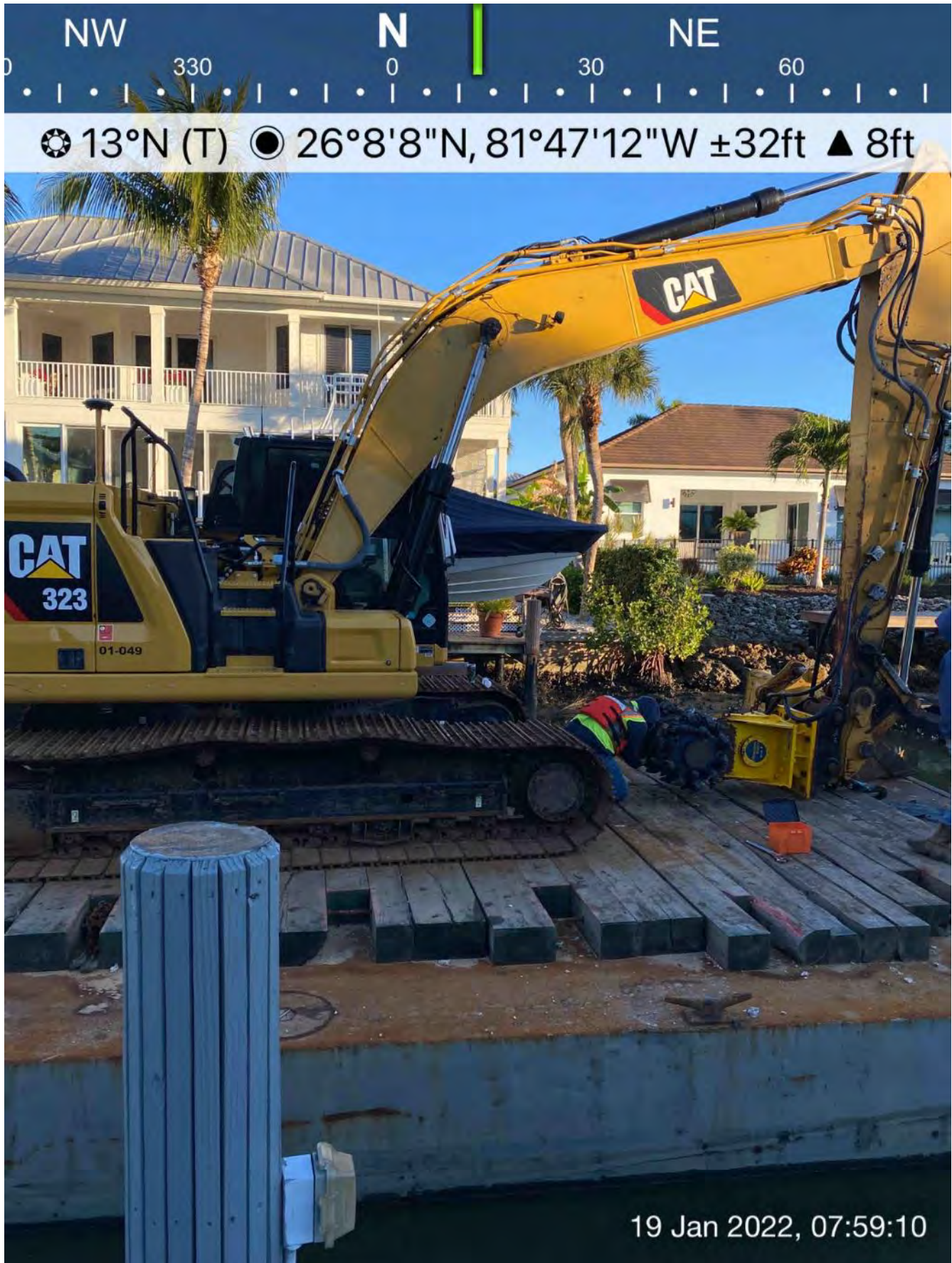


Full dump truck taking material away from the site at 1300 Curlew Avenue

SE S SW  
120 150 180 210 240  
☀ 186°S (T) ☉ 26°8'15"N, 81°47'15"W ±26ft ▲ 8ft



Removed material at dewatering site at 1300 Curlew Avenue



Replacing teeth on Epiroc grinder attachment for 323 excavator on barge at station 4+25



Epiroc grinder attached to 323 excavator on barge at station 4+25



☀ 6°N (T)    ● 26°8'8"N, 81°47'12"W ±13ft    ▲ 9ft



19 Jan 2022, 08:08:35

323 excavator grinding rock at station 4+50



SE 150 S 180 SW 210 240  
☀ 196°S (T) ☉ 26°8'16"N, 81°47'19"W ±114ft ▲ 1ft



19 Jan 2022, 09:47:30

Contractor fixing silt fence around the site at 1300 Curlew Avenue

SW W NW  
210 240 270 300 330  
☀ 262°W (T) ☉ 26°8'9"N, 81°47'13"W ±13ft ▲ 11ft



19 Jan 2022, 11:35:11

Turbidity curtain across the mouth of Canal BB-BB



SE S SW  
120 150 180 210 240  
☀ 176°S (T) ☉ 26°8'9"N, 81°47'12"W ±13ft ▲ 8ft



19 Jan 2022, 11:36:05

323 excavator grinding rock at station 4+50

S 180 SW 210 240 W 270 300  
☉ 233°SW (T) ☉ 26°8'13"N, 81°47'15"W ±19ft ▲ 8ft



Hopper, push boat, and support boat at station 1+50 in Canal CC-CC



**DAILY REPORT OF CONSTRUCTION**  
 21-036 EAST NAPLES BAY  
 DREDGING AND ROCK REMOVAL PROJECT



Date: <b>01/20/2022</b>			
Inspectors: <b>SB</b>	Stantec PIN: <b>2028113191</b>		Accidents <input type="checkbox"/> Yes <input checked="" type="checkbox"/> No
Day of Week: <b>Thursday</b>	Contract Day: <b>95/365</b>	Week: <b>14</b>	Accident Report #: <b>N/A</b>
High Temp (°F): <b>79°F</b>	AM Conditions: <b>Cloudy</b>	PM Conditions: <b>Sunny</b>	High Tide: <b>3:19 PM +2.0'</b>
Low Temp (°F): <b>58°F</b>	Wind: <b>0 mph</b>	Wind: <b>6 mph</b>	Low Tide: <b>8:52 AM -0.5'</b>
Canal Worked In: <b>BB-BB</b>	Stations Worked Between:	<b>4+50 to 4+75</b>	

<b>General</b>	
<b>#1 – Prime Contractor – Quality Enterprises:</b>	
<ul style="list-style-type: none"> <li>• Contractor has an excavator mounted on a barge staged in Canal BB-BB at station 4+50. Contractor has a hopper, a push boat, and a support boat staged in the Canal CC-CC at station 1+50. Contractor also has a long-reach excavator, a front end loader, a water tank, and two fuel cubes staged on the property located at 1300 Curlew Avenue, Naples, FL, 34102.</li> <li>• Contractor installed turbidity curtain across the mouth of Canal BB-BB.</li> <li>• Contractor used 323 excavator to check bottom elevations and grind rock from stations 4+50 to 4+75.</li> <li>• Contractor used push boat to position the barge as necessary for checking elevations and grinding material.</li> <li>• Contractor used support boat for transportation to and from the barge in Canal BB-BB.</li> <li>• Dump truck came to lot at 1300 Curlew Avenue.</li> <li>• Contractor used front end loader to transfer 4 truckloads of material from dewatering site to the dump truck.</li> <li>• Dump truck took material off the site at 1300 Curlew Avenue and transported to QE property at Veterans Memorial Blvd, Naples, FL, 34110.</li> <li>• Contractor refilled small fuel cube with large fuel cube and transported small fuel cube to push boat with 326 excavator.</li> <li>• Push boat transported fuel cube to the barge at station 4+50 in Canal BB-BB where it was used to refuel 323 excavator.</li> <li>• Push boat transported small fuel cube back to site where 326 excavator lifted it back to the southwest corner of 1300 Curlew Avenue.</li> <li>• Utility truck came to 1300 Curlew Avenue to fix hydraulic hose on front end loader.</li> </ul>	

Contractor(s) and Personnel										
#	Name	Type	#	Hrs.	Type	#	Hrs.	Type	#	Hrs.
1	Prime: <b>Quality Enterprises</b>	PM	0	0	Boat Captain	1	9	Foreman	0	0
		Excavator Operator	1	9	Truck Driver	1	9	Assistant	1	9
		Technician	0	0	Superintendent	1	9	VP	0	0

Equipment					
Cont/ Sub #	Equipment ID	Description	# Pieces	# Used	Total Hours Used
1	N/A	Barge	1	1	9
1	CAT 323	Excavator	1	1	9
1	CAT 326	Excavator	1	1	1
1	02016	Front End Loader	1	1	5
1	FL6223TB	Push Boat	1	1	2
1	FL2474PP	Support Boat	1	1	2
1	N3758Z	Fuel Truck	0	0	0
1	P9457E	Water Truck	0	0	0
1	725RZM	Water Tank	0	0	0
1	Z67EAZ	Small Dump truck	0	0	0
1	MB35DQ	Dump truck	1	1	9
1	MB38DQ	Utility Truck	1	1	1
1	5178CR	Transport Truck	0	0	0

Visitors			
Name	Company	Hours at Job Site	
		From:	To:

Inspector Name and Position	Hours at Job Site/Office		Total Hours
Sam Boyd, EIT	From: 7:30 AM	To: 3:30 PM	8.0

E 90 SE 120 150 S 180 SW 210  
☀ 157°SE (T) ☉ 26°8'15"N, 81°47'15"W ±75ft ▲ 8ft



Front end loader transferring material from dewatering site to dump truck at 1300 Curlew Avenue



☀ 50°NE (T) ☉ 26°8'15"N, 81°47'15"W ±13ft ▲ 9ft



20 Jan 2022, 07:41:06

Removed material at dewatering site at 1300 Curlew Avenue

E SE S  
60 90 120 150 180  
☀ 126°SE (T) ☉ 26°8'15"N, 81°47'15"W ±13ft ▲ 9ft



Front end loader transferring material from dewatering site to dump truck at 1300 Curlew Avenue

E 90 SE 120 150 S 180  
☀ 134°SE (T) ☉ 26°8'9"N, 81°47'13"W ±49ft ▲ 8ft



20 Jan 2022, 09:15:39

323 excavator, barge, and push boat at station 4+50





☉ 263°W (T)    ● 26°8'9"N, 81°47'13"W ±45ft    ▲ 8ft



20 Jan 2022, 09:15:49

**Turbidity curtain across the mouth of Canal BB-BB**



☀ 166°S (T) ☉ 26°8'9"N, 81°47'12"W ±13ft ▲ 9ft



323 excavator grinding rock at station 4+50

E 90 SE 120 150 S 180 210

☀ 149°SE (T) ● 26°8'9"N, 81°47'12"W ±36ft ▲ 8ft



323 excavator grinding rock at station 4+50



☀ 31°NE (T) ● 26°8'14"N, 81°47'15"W ±85ft ▲ 8ft



Contractor inspecting and fixing hydraulic hose on front end loader on site at 1300 Curlew Avenue



**DAILY REPORT OF CONSTRUCTION**  
 21-036 EAST NAPLES BAY  
 DREDGING AND ROCK REMOVAL PROJECT



Date: <b>01/21/2022</b>			
Inspectors: <b>SB</b>	Stantec PIN: <b>2028113191</b>	Accidents <input type="checkbox"/> Yes <input checked="" type="checkbox"/> No	
Day of Week: <b>Friday</b>	Contract Day: <b>96/365</b>	Week: <b>14</b>	Accident Report #: <b>N/A</b>
High Temp (°F): <b>78°F</b>	AM Conditions: <b>Foggy</b>	PM Conditions: <b>Cloudy</b>	High Tide: <b>3:51 PM +2.1'</b>
Low Temp (°F): <b>63°F</b>	Wind: <b>3 mph</b>	Wind: <b>9 mph</b>	Low Tide: <b>9:26 AM -0.4'</b>
Canal Worked In: <b>BB-BB</b>	Stations Worked Between:	<b>4+75 to 5+00</b>	

General
<p><b>#1 – Prime Contractor – Quality Enterprises:</b></p> <ul style="list-style-type: none"> <li>• Contractor has an excavator mounted on a barge staged in Canal BB-BB at station 4+50. Contractor has a hopper, a push boat, and a support boat staged in the Canal CC-CC at station 1+50. Contractor also has a long-reach excavator, a front end loader, a water tank, and two fuel cubes staged on the property located at 1300 Curlew Avenue, Naples, FL, 34102.</li> <li>• Contractor installed turbidity curtain across the mouth of Canal BB-BB.</li> <li>• Contractor used 323 excavator to check bottom elevations and grind rock from stations 4+75 to 5+00.</li> <li>• Contractor used push boat to position the barge as necessary for checking elevations and grinding material.</li> <li>• Contractor used support boat for transportation to and from the barge in Canal BB-BB.</li> <li>• Dump truck came to lot at 1300 Curlew Avenue with pebbles.</li> <li>• Contractor distributed to the pebbles with front end loader across the entrance of 1300 Curlew Avenue for soil retention.</li> <li>• Another dump truck came to the lot at 1300 Curlew Avenue.</li> <li>• Contractor used front end loader to transfer 4 truckloads of material from dewatering site to the dump trucks.</li> <li>• Dump trucks took material off the site at 1300 Curlew Avenue.</li> <li>• Smaller dump truck came to the site at 1300 Curlew Avenue.</li> <li>• Contractor used front end loader to clean up the site and transfer trash to the smaller dump truck.</li> <li>• Contractor used push boat to transport barge and 323 excavator back to station 1+50 in Canal CC-CC for the weekend.</li> <li>• Contractor used water tank to clean the equipment.</li> </ul>

Contractor(s) and Personnel										
#	Name	Type	#	Hrs.	Type	#	Hrs.	Type	#	Hrs.
1	Prime: <b>Quality Enterprises</b>	PM	0	0	Boat Captain	1	9	Foreman	0	0
		Excavator Operator	1	9	Truck Driver	2	6	Assistant	1	9
		Technician	0	0	Superintendent	1	9	VP	0	0

Equipment					
Cont/ Sub #	Equipment ID	Description	# Pieces	# Used	Total Hours Used
1	N/A	Barge	1	1	9
1	CAT 323	Excavator	1	1	9
1	CAT 326	Excavator	1	1	1
1	02016	Front End Loader	1	1	5
1	FL6223TB	Push Boat	1	1	2
1	FL2474PP	Support Boat	1	1	2
1	N3758Z	Fuel Truck	0	0	0
1	P9457E	Water Truck	0	0	0
1	725RZM	Water Tank	1	1	2
1	Z67EAZ	Small Dump truck	1	1	0.5
1	MB35DQ	Dump truck	1	1	4
1	MB28DQ	Dump truck	1	1	2
1	MB38DQ	Utility Truck	0	0	0
1	5178CR	Transport Truck	0	0	0

Visitors			
Name	Company	Hours at Job Site	
		From:	To:

Inspector Name and Position	Hours at Job Site/Office		Total Hours
Sam Boyd, EIT	From: 7:00 AM	To: 3:00 PM	8.0



☉ 46°NE (T) ● 26°8'14"N, 81°47'16"W ±45ft ▲ 9ft



Dump truck dumping pebbles on site at 1300 Curlew Avenue



Front end loader transferring material from dewatering site to dump truck at 1300 Curlew Avenue





☀ 360°N (T) ● 26°8'9"N, 81°47'13"W ±55ft ▲ 8ft



21 Jan 2022, 08:34:47

**Turbidity curtain across the mouth of Canal BB-BB**

E 90 SE 120 50 S 180 210

☀ 148°SE (T) ● 26°8'9"N, 81°47'13"W ±52ft ▲ 8ft



21 Jan 2022, 08:35:22

323 excavator grinding rock at station 4+75



☀ 27°NE (T) ☉ 26°8'8"N, 81°47'12"W ±13ft ▲ 10ft



21 Jan 2022, 09:49:33

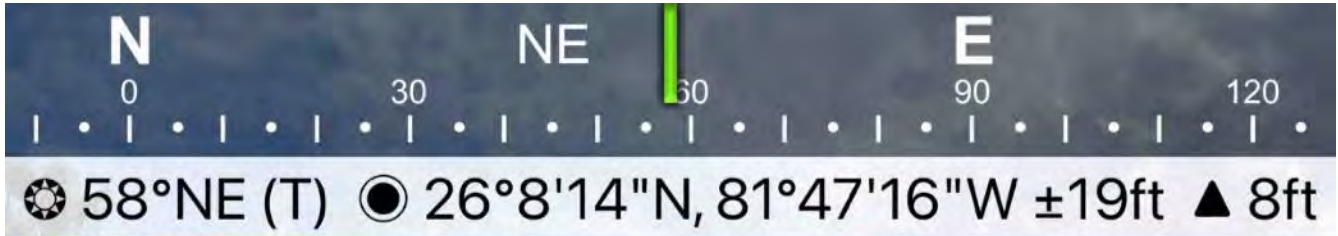
323 excavator grinding rock at station 5+00



☉ 258°W (T) ☉ 26°8'15"N, 81°47'15"W ±19ft ▲ 8ft



Front end loader transferring material from dewatering site to dump truck at 1300 Curlew Avenue



Front end loader spreading pebbles on site at 1300 Curlew Avenue



☉ 163°S (T) ☉ 26°8'9"N, 81°47'12"W ±13ft ▲ 11ft



323 excavator lifting spud to allow push boat to move barge at station 4+75

E 90 SE 120 150 180 S SW 210

☀ 159°S (T) ● 26°8'14"N, 81°47'16"W ±19ft ▲ 8ft



Removed material at dewatering site at 1300 Curlew Avenue