



WEEKLY SUMMARY REPORT – CONTRACT WEEK 12

21-036 EAST NAPLES BAY

DREDGING AND ROCK REMOVAL PROJECT



Date: 12/11/2023 to 12/16/2023			
Inspectors: Mackenzie Hudson	Stantec PIN: 2028113191	Accidents <input type="checkbox"/> Yes <input checked="" type="checkbox"/> No	
Days of Week: Monday to Saturday	Contract Days: 78 to 83	Total Days: 83	Accident Report #: N/A
Canal(s) Worked In: Main B		Stations Worked Between: 6+50 to 5+00	

General

Remarks

#1 – Prime Contractor – Quality Enterprises:

Monday 12-11-2023:

- Turbidity curtain noted in place at station 4+00 in Canal Main B at 9:00am.
- Canal sediment removal in progress today (Canal Main B) starting at approximately station 6+50 and moving to 6+00 in the southwest direction. Sediment removal only, no grinding.
- Contractor dredged from 9:00am to 9:25am. Contractor transported hopper to staging area at 1300 Curlew Avenue from 9:30am to 10:15am. Contractor used long reach excavator to unload material from hopper onto staging area from 10:15am to 10:35am while the push boat transported the other hopper to Canal Main B.
- Contractor resumed dredging from 11:20am to 11:35am. Contractor left site at 11:40am and returned at 1:00pm to transport hopper to staging area at 1300 Curlew Avenue from 1:10pm to 2:10pm. Contractor used long reach excavator to unload material from hopper onto staging area from 2:15pm to 2:35pm while the push boat transported other hopper to Canal Main B.
- Contractor resumed dredging from 2:55pm to 3:10pm. Contractor transported hopper to staging area at 1300 Curlew Avenue from 3:15pm to 3:55pm. Contractor used long reach excavator to unload material from hopper onto staging area from 4:00pm to 4:30pm while the push boat transported other hopper to Canal Main B.
- Contractor used support boat to open and close turbidity curtain for boaters while dredging was in progress.
- Contractor has a barge, an excavator, one hopper, a support boat, a small fuel cube, and a push boat staged overnight at station 4+00 in Canal Main B1 while working on this canal. Contractor also has one hopper staged in Canal CC-CC between stations 1+00 and 2+00. In addition, the contractor has a long reach excavator, Conex box, a fuel cube, and a water tank on trailer staged on the property located at 1300 Curlew Avenue, Naples, FL 34102. A GPS base station is also set up at this location during project work hours today.
- Three (3) hoppers of material removed.



WEEKLY SUMMARY REPORT – CONTRACT WEEK 12

21-036 EAST NAPLES BAY

DREDGING AND ROCK REMOVAL PROJECT



Tuesday 12-12-2023:

- Turbidity curtain noted in place at station 4+00 in Canal Main B at 9:00am.
- Canal sediment removal in progress today (Canal Main B) starting at approximately station 5+75 moving to station 5+50 in the southwest direction. Sediment removal only, no grinding.
- Contractor dredged from 8:50am to 9:20am. Contractor transported hopper to staging area at 1300 Curlew Avenue from 9:25am to 10:20am. Contractor used long reach excavator to unload material from hopper onto staging area from 10:25am to 10:45am while the push boat transported the other hopper to Canal Main B.
- Contractor resumed dredging from 11:00am to 11:20am. Contractor transported hopper to staging area at 1300 Curlew Avenue from 11:25am to 12:05pm. Contractor used long reach excavator to unload material from hopper onto staging area from 12:10pm to 12:30pm while the push boat transported other hopper to Canal Main B.
- Contractor resumed dredging from 12:50pm to 1:20pm. Contractor transported hopper to staging area at 1300 Curlew Avenue from 1:25pm to 2:20pm. Contractor used long reach excavator to unload material from hopper onto staging area from 2:25pm to 2:50pm while the push boat transported other hopper to Canal Main B.
- Contractor resumed dredging from 3:00pm to 3:15pm. Contractor transported hopper to staging area at 1300 Curlew Avenue from 3:20pm to 4:05pm. Contractor used long reach excavator to unload material from hopper onto staging area from 4:10pm to 4:40pm while the push boat transported other hopper to Canal Main B.
- Contractor used support boat to open and close turbidity curtain for boaters while dredging was in progress.
- Contractor has a barge, an excavator, one hopper, a support boat, a small fuel cube, and a push boat staged overnight at station 4+00 in Canal Main B1 while working on this canal. Contractor also has one hopper staged in Canal CC-CC between stations 1+00 and 2+00. In addition, the contractor has a long reach excavator, Conex box, a fuel cube, and a water tank on trailer staged on the property located at 1300 Curlew Avenue, Naples, FL 34102. A GPS base station is also set up at this location during project work hours today.
- Four (4) hoppers of material removed.

Wednesday 12-13-2023:

- Contractor waited for tide to rise before moving the barge to start dredging for the day.
- Turbidity curtain noted in place at station 4+00 in Canal Main B at 12:00pm.
- Canal sediment removal in progress today (Canal Main B) starting at approximately station 5+50. Sediment removal only, no grinding.
- Contractor dredged from 10:20am to 10:40am. Contractor transported hopper to staging area at 1300 Curlew Avenue from 10:45am to 11:30am. Contractor used long reach excavator to unload material from hopper onto staging area from 11:35am to 12:00pm while the push boat transported the other hopper to Canal Main B.
- Contractor resumed dredging from 12:10pm to 12:30pm. Contractor transported hopper to staging area at 1300 Curlew Avenue from 1:00pm to 1:55pm. Contractor used long reach excavator to unload material from hopper onto staging area from 2:00pm to 2:20pm while the push boat transported other hopper to Canal Main B.



WEEKLY SUMMARY REPORT – CONTRACT WEEK 12

21-036 EAST NAPLES BAY

DREDGING AND ROCK REMOVAL PROJECT



- Contractor resumed dredging from 2:30pm to 2:50pm. Contractor transported hopper to staging area at 1300 Curlew Avenue from 2:55pm to 3:35pm. Contractor used long reach excavator to unload material from hopper onto staging area from 3:40pm to 4:00pm while the push boat transported other hopper to Canal Main B.
- Contractor used support boat to open and close turbidity curtain for boaters while dredging was in progress.
- Contractor has a barge, an excavator, one hopper, a support boat, a small fuel cube, and a push boat staged overnight at station 4+00 in Canal Main B1 while working on this canal. Contractor also has one hopper staged in Canal CC-CC between stations 1+00 and 2+00. In addition, the contractor has a long reach excavator, Conex box, a fuel cube, and a water tank on trailer staged on the property located at 1300 Curlew Avenue, Naples, FL 34102. A GPS base station is also set up at this location during project work hours today.
- Three (3) hoppers of material removed.

Thursday 12-14-2023:

- Contractor waited for tide to rise before moving the barge to start dredging for the day.
- Turbidity curtain noted in place at station 4+00 in Canal Main B at 12:00pm.
- Canal sediment removal in progress today (Canal Main B) starting at approximately station 5+25. Sediment removal only, no grinding.
- Contractor dredged from 10:50am to 11:05am. Contractor transported hopper to staging area at 1300 Curlew Avenue from 11:10am to 11:45am. Contractor used long reach excavator to unload material from hopper onto staging area from 11:50am to 12:10pm while the push boat transported the other hopper to Canal Main B.
- Contractor resumed dredging from 12:35pm to 12:55pm. Contractor transported hopper to staging area at 1300 Curlew Avenue from 1:00pm to 1:55pm. Contractor used long reach excavator to unload material from hopper onto staging area from 2:00pm to 2:20pm while the push boat transported other hopper to Canal Main B.
- Contractor resumed dredging from 2:35pm to 2:55pm. Contractor transported hopper to staging area at 1300 Curlew Avenue from 3:00pm to 3:45pm. Contractor used long reach excavator to unload material from hopper onto staging area from 3:40pm to 4:10pm while the push boat transported other hopper to Canal Main B.
- Contractor used support boat to open and close turbidity curtain for boaters while dredging was in progress.
- Contractor has a barge, an excavator, one hopper, a support boat, a small fuel cube, and a push boat staged overnight at station 4+00 in Canal Main B1 while working on this canal. Contractor also has one hopper staged in Canal CC-CC between stations 1+00 and 2+00. In addition, the contractor has a long reach excavator, Conex box, a fuel cube, and a water tank on trailer staged on the property located at 1300 Curlew Avenue, Naples, FL 34102. A GPS base station is also set up at this location during project work hours today.
- Three (3) hoppers of material removed.



WEEKLY SUMMARY REPORT – CONTRACT WEEK 12
21-036 EAST NAPLES BAY
DREDGING AND ROCK REMOVAL PROJECT



Friday 12-15-2023:

- Contractor waited for tide to rise before moving the barge to start dredging for the day.
- Turbidity curtain noted in place around the barge at 12:50pm.
- Canal sediment removal in progress today (Canal Main B) starting at approximately station 5+00. Sediment removal only, no grinding.
- Contractor dredged from 11:10am to 11:25am. Contractor transported hopper to staging area at 1300 Curlew Avenue from 11:30am to 12:10pm. Contractor used long reach excavator to unload material from hopper onto staging area from 12:15pm to 12:30pm while the push boat transported the other hopper to Canal Main B.
- Contractor resumed dredging from 1:00pm to 1:20pm. Contractor transported hopper to staging area at 1300 Curlew Avenue from 1:40pm to 2:30pm. Contractor used long reach excavator to unload material from hopper onto staging area from 2:35pm to 2:50pm while the push boat transported other hopper to Canal Main B.
- Contractor resumed dredging from 3:05pm to 3:20pm. Contractor transported hopper to staging area at 1300 Curlew Avenue from 3:25pm to 4:05pm. Contractor used long reach excavator to unload material from hopper onto staging area from 4:10pm to 4:35pm while the push boat transported other hopper to Canal Main B.
- Contractor used support boat to open and close turbidity curtain for boaters while dredging was in progress.
- Contractor has a barge, an excavator, one hopper, a support boat, a small fuel cube, and a push boat staged overnight at station 4+00 in Canal Main B1 while working on this canal. Contractor also has one hopper staged in Canal CC-CC between stations 1+00 and 2+00. In addition, the contractor has a long reach excavator, Conex box, a fuel cube, and a water tank on trailer staged on the property located at 1300 Curlew Avenue, Naples, FL 34102. A GPS base station is also set up at this location during project work hours today.
- Three (3) hoppers of material removed.

Saturday 12-16-2023:

- Contractor loaded material from the staging area at 1300 Curlew Avenue into dump trucks to be hauled off site.
- Ten (10) truck loads of material removed.

Note: Daily reports for the week attached.



DAILY REPORT OF CONSTRUCTION
 21-036 EAST NAPLES BAY
 DREDGING AND ROCK REMOVAL PROJECT



Date: 12/11/2023			
Inspector: Mackenzie Hudson	Stantec PIN: 2028113191		Accidents <input type="checkbox"/> Yes <input checked="" type="checkbox"/> No
Day of Week: Monday	Contract Day: 78	Week: 12	Accident Report #: N/A
High Temp (°F): 70 °F	AM Conditions: Sunny	PM Conditions: Cloudy	High Tide: 12:35 PM – 2.2'
Low Temp (°F): 54 °F	Wind: 16 to 20 mph	Wind: 16 mph	Low Tide: 5:48 PM – 1.3'
Canal Worked In: Main B	Stations Worked Between:	6+50 to 6+00	

General

#1 – Prime Contractor – Quality Enterprises:

- Turbidity curtain noted in place at station 4+00 in Canal Main B at 9:00am.
- Canal sediment removal in progress today (Canal Main B) starting at approximately station 6+50 and moving to 6+00 in the southwest direction. Sediment removal only, no grinding.
- Contractor dredged from 9:00am to 9:25am. Contractor transported hopper to staging area at 1300 Curlew Avenue from 9:30am to 10:15am. Contractor used long reach excavator to unload material from hopper onto staging area from 10:15am to 10:35am while the push boat transported the other hopper to Canal Main B.
- Contractor resumed dredging from 11:20am to 11:35am. Contractor left site at 11:40am and returned at 1:00pm to transport hopper to staging area at 1300 Curlew Avenue from 1:10pm to 2:10pm. Contractor used long reach excavator to unload material from hopper onto staging area from 2:15pm to 2:35pm while the push boat transported other hopper to Canal Main B.
- Contractor resumed dredging from 2:55pm to 3:10pm. Contractor transported hopper to staging area at 1300 Curlew Avenue from 3:15pm to 3:55pm. Contractor used long reach excavator to unload material from hopper onto staging area from 4:00pm to 4:30pm while the push boat transported other hopper to Canal Main B.
- Contractor used support boat to open and close turbidity curtain for boaters while dredging was in progress.
- Contractor has a barge, an excavator, one hopper, a support boat, a small fuel cube, and a push boat staged overnight at station 4+00 in Canal Main B1 while working on this canal. Contractor also has one hopper staged in Canal CC-CC between stations 1+00 and 2+00. In addition, the contractor has a long reach excavator, Conex box, a fuel cube, and a water tank on trailer staged on the property located at 1300 Curlew Avenue, Naples, FL 34102. A GPS base station is also set up at this location during project work hours today.
- Three (3) hoppers of material removed.

Contractor(s) and Personnel										
#	Name	Type	#	Hrs.	Type	#	Hrs.	Type	#	Hrs.
1	Prime: Quality Enterprises	PM	0	0	Field Supervisor	0	0	Foreman	0	0
		Skilled Laborer	2	10	Unskilled Laborer	1	10	Safety Director	0	0

Equipment					
Cont/ Sub #	Equipment ID	Description	# Pieces	# Used	Total Hours Used
1	N/A	Barge	1	1	7
1	CAT 323	Excavator - Barge	1	1	3
1	CAT 326	Excavator – Long Reach	1	1	3
1	FL6223TB	Push Boat	1	1	8
1	FL2474PP	Support Boat	1	1	8
1	N/A	Hopper	2	2	8

Visitors			
Name	Company	Hours at Job Site	
		From:	To:

Inspector Name and Position	Hours at Job Site/Office		Total Hours
Mackenzie Hudson, EIT – CEI	From: 8:00 AM	To: 5:00 PM	8.0 hours



☀ 107°E (T) ● 26°7'19"N, 81°47'3"W ±13ft ▲ 10ft



11 Dec 2023, 09:01:06

323 excavator removing sediment at station 6+50 in Canal Main B.



☀ 182°S (T) ☉ 26°7'19"N, 81°47'3"W ±13ft ▲ 11ft



11 Dec 2023, 09:28:58

Push boat taking hopper to staging area.

NE E SE
30 60 90 120 150

☉ 99°E (T) ☉ 26°8'13"N, 81°47'16"W ±9ft ▲ 11ft



Long reach excavator removing sediment from hopper.



☀ 139°SE (T) ☉ 26°8'14"N, 81°47'16"W ±13ft ▲ 20ft



11 Dec 2023, 10:20:43

Long reach excavator spreading sediment onto staging area.

SE 120 150 180 210 SW

☉ 163°S (T) ☉ 26°7'19"N, 81°47'3"W ±16ft ▲ 9ft



11 Dec 2023, 11:19:45

323 excavator removing sediment at station 6+25 in Canal Main B.



☀ 183°S (T) ● 26°7'19"N, 81°47'3"W ±9ft ▲ 34ft



Push boat taking hopper to staging area.



☀ 115°SE (T) ● 26°8'13"N, 81°47'16"W ±13ft ▲ 10ft



11 Dec 2023, 14:15:24

Long reach excavator removing sediment from hopper.

E 90 SE 120 150 180 S 210 SW

☀ 155°SE (T) ● 26°8'14"N, 81°47'16"W ±13ft ▲ 10ft



11 Dec 2023, 14:15:57

Long reach excavator spreading sediment onto staging area.



☉ 154°SE (T) ● 26°7'19"N, 81°47'3"W ±13ft ▲ 8ft



323 excavator removing sediment at station 6+00 in Canal Main B.



☀ 189°S (T) ☉ 26°7'19"N, 81°47'3"W ±19ft ▲ 6ft



11 Dec 2023, 15:16:00

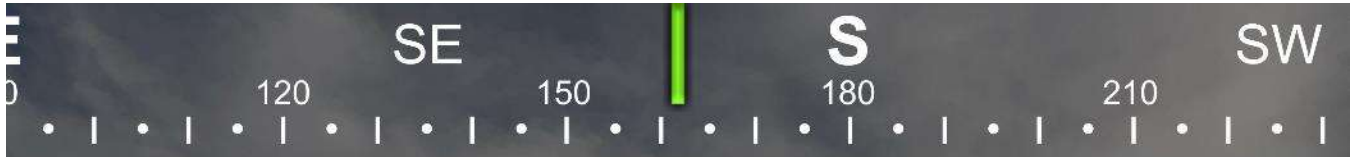
Push boat taking hopper to staging area.

E SE S
60 90 120 150 180

☉ 124°SE (T) ● 26°8'13"N, 81°47'16"W ±13ft ▲ 1ft



Long reach excavator removing sediment from hopper.



☉ 162°S (T) ☉ 26°8'14"N, 81°47'16"W ±13ft ▲ 5ft



11 Dec 2023, 16:01:23

Long reach excavator spreading sediment onto staging area.



DAILY REPORT OF CONSTRUCTION
 21-036 EAST NAPLES BAY
 DREDGING AND ROCK REMOVAL PROJECT



Date: 12/12/2023			
Inspector: Mackenzie Hudson	Stantec PIN: 2028113191		Accidents <input type="checkbox"/> Yes <input checked="" type="checkbox"/> No
Day of Week: Tuesday	Contract Day: 79	Week: 12	Accident Report #: N/A
High Temp (°F): 76 °F	AM Conditions: Cloudy	PM Conditions: Cloudy	High Tide: 1:22 PM – 2.2'
Low Temp (°F): 53 °F	Wind: 17 to 18 mph	Wind: 17 to 18 mph	Low Tide: 6:40 AM – -0.7'
Canal Worked In: Main B	Stations Worked Between:	5+75 to 5+50	

General

#1 – Prime Contractor – Quality Enterprises:

- Turbidity curtain noted in place at station 4+00 in Canal Main B at 9:00am.
- Canal sediment removal in progress today (Canal Main B) starting at approximately station 5+75 moving to station 5+50 in the southwest direction. Sediment removal only, no grinding.
- Contractor dredged from 8:50am to 9:20am. Contractor transported hopper to staging area at 1300 Curlew Avenue from 9:25am to 10:20am. Contractor used long reach excavator to unload material from hopper onto staging area from 10:25am to 10:45am while the push boat transported the other hopper to Canal Main B.
- Contractor resumed dredging from 11:00am to 11:20am. Contractor transported hopper to staging area at 1300 Curlew Avenue from 11:25am to 12:05pm. Contractor used long reach excavator to unload material from hopper onto staging area from 12:10pm to 12:30pm while the push boat transported other hopper to Canal Main B.
- Contractor resumed dredging from 12:50pm to 1:20pm. Contractor transported hopper to staging area at 1300 Curlew Avenue from 1:25pm to 2:20pm. Contractor used long reach excavator to unload material from hopper onto staging area from 2:25pm to 2:50pm while the push boat transported other hopper to Canal Main B.
- Contractor resumed dredging from 3:00pm to 3:15pm. Contractor transported hopper to staging area at 1300 Curlew Avenue from 3:20pm to 4:05pm. Contractor used long reach excavator to unload material from hopper onto staging area from 4:10pm to 4:40pm while the push boat transported other hopper to Canal Main B.
- Contractor used support boat to open and close turbidity curtain for boaters while dredging was in progress.
- Contractor has a barge, an excavator, one hopper, a support boat, a small fuel cube, and a push boat staged overnight at station 4+00 in Canal Main B1 while working on this canal. Contractor also has one hopper staged in Canal CC-CC between stations 1+00 and 2+00. In addition, the contractor has a long reach excavator, Conex box, a fuel cube, and a water tank on trailer staged on the property located at 1300 Curlew Avenue, Naples, FL 34102. A GPS base station is also set up at this location during project work hours today.
- Four (4) hoppers of material removed.

Contractor(s) and Personnel										
#	Name	Type	#	Hrs.	Type	#	Hrs.	Type	#	Hrs.
1	Prime: Quality Enterprises	PM	0	0	Field Supervisor	0	0	Foreman	0	0
		Skilled Laborer	2	10	Unskilled Laborer	1	10	Safety Director	0	0

Equipment					
Cont/ Sub #	Equipment ID	Description	# Pieces	# Used	Total Hours Used
1	N/A	Barge	1	1	7
1	CAT 323	Excavator - Barge	1	1	4
1	CAT 326	Excavator – Long Reach	1	1	4
1	FL6223TB	Push Boat	1	1	9
1	FL2474PP	Support Boat	1	1	9
1	N/A	Hopper	2	2	9

Visitors			
Name	Company	Hours at Job Site	
		From:	To:

Inspector Name and Position	Hours at Job Site/Office		Total Hours
Mackenzie Hudson, EIT – CEI	From: 8:00 AM	To: 5:00 PM	8.0 hours

SE 120 150 180 210 240 SW

☀ 180°S (T) ☉ 26°7'19"N, 81°47'3"W ±13ft ▲ 12ft



323 excavator removing sediment at station 5+75.



☀ 129°SE (T) ● 26°8'13"N, 81°47'16"W ±13ft ▲ 18ft



12 Dec 2023, 10:26:32

Long reach excavator removing sediment from hopper.

SE 120 150 180 210 SW

☉ 167°S (T) ☉ 26°8'14"N, 81°47'16"W ±13ft ▲ 14ft



12 Dec 2023, 10:27:17

Long reach excavator spreading sediment onto staging area.

SE 120 150 180 210 SW

☀ 167°S (T) ● 26°7'19"N, 81°47'3"W ±13ft ▲ 12ft



12 Dec 2023, 11:03:19

323 excavator removing sediment at station 5+75.



☉ 170°S (T) ● 26°7'19"N, 81°47'3"W ±29ft ▲ 7ft



12 Dec 2023, 11:24:10

Push boat taking hopper to staging area.



☉ 120°SE (T) ● 26°8'13"N, 81°47'16"W ±9ft ▲ 23ft



12 Dec 2023, 12:11:54

Long reach excavator removing sediment from hopper.

SE 120 150 180 210 SW

☀ 163°S (T) ● 26°8'14"N, 81°47'16"W ±13ft ▲ 17ft



Long reach excavator spreading sediment onto staging area.



☉ 171°S (T) ● 26°7'19"N, 81°47'3"W ±13ft ▲ 11ft



12 Dec 2023, 12:52:01

323 excavator removing sediment at station 5+75.

E 90 SE 120 150 S 180

☉ 129°SE (T) ● 26°8'13"N, 81°47'16"W ±9ft ▲ 8ft



Long reach excavator removing sediment from hopper.

E
0
120 SE 150 180 S 210 SW

☉ 162°S (T) ☉ 26°8'14"N, 81°47'16"W ±13ft ▲ 11ft



Long reach excavator spreading sediment onto staging area.



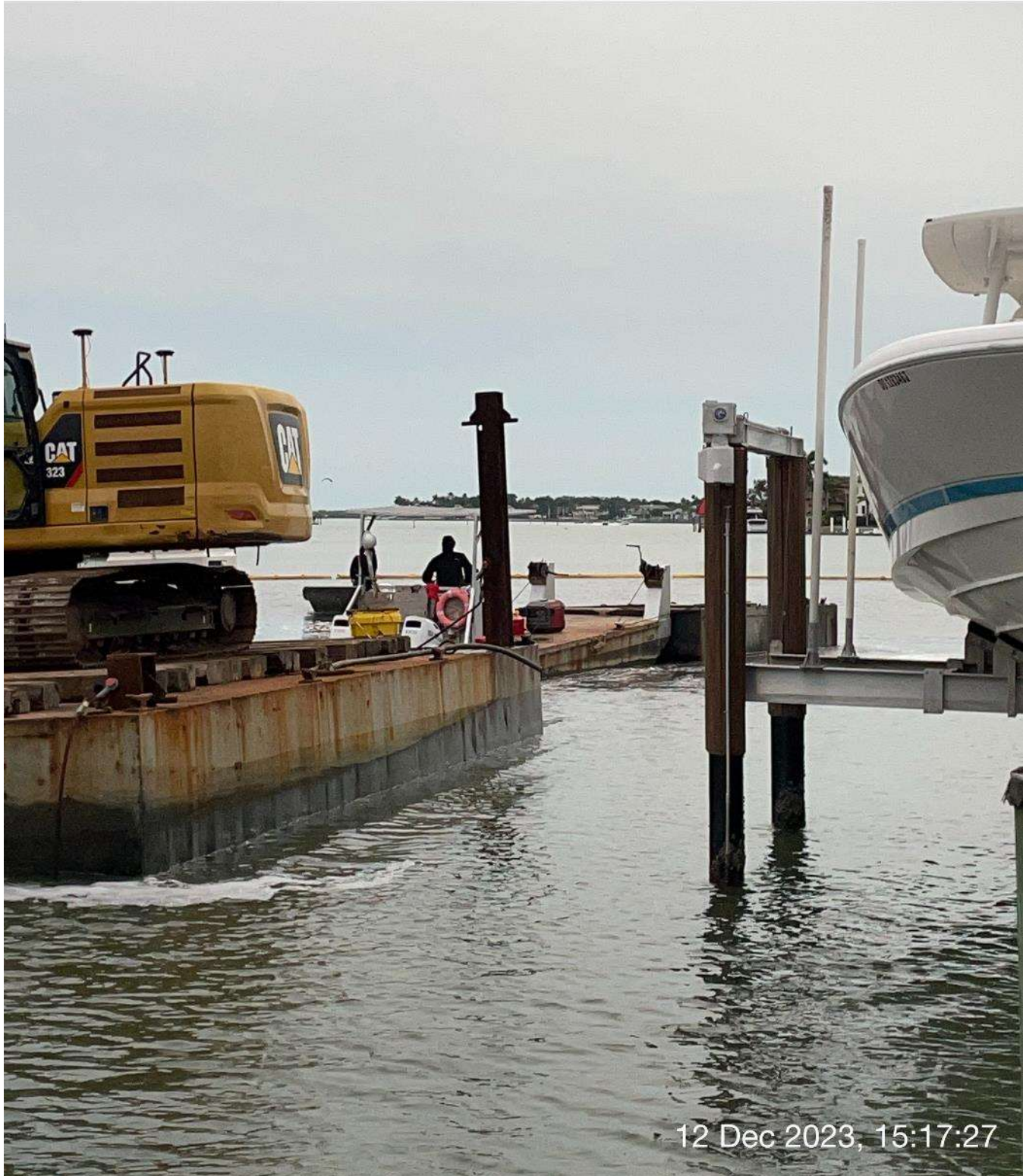
☉ 176°S (T) ☉ 26°7'19"N, 81°47'3"W ±13ft ▲ 8ft



323 excavator removing sediment at station 5+50.

SE S SW
20 150 180 210 240

☀ 190°S (T) ☉ 26°7'19"N, 81°47'3"W ±13ft ▲ 9ft



12 Dec 2023, 15:17:27

Push boat taking hopper to staging area.



☉ 123°SE (T) ● 26°8'13"N, 81°47'16"W ±16ft ▲ 9ft



Long reach excavator removing sediment from hopper.

E 90 SE 120 150 S 180 SV 210

☀ 155°SE (T) ● 26°8'14"N, 81°47'16"W ±13ft ▲ 12ft



12 Dec 2023, 16:06:13

Long reach excavator spreading sediment onto staging area.



DAILY REPORT OF CONSTRUCTION
 21-036 EAST NAPLES BAY
 DREDGING AND ROCK REMOVAL PROJECT



Date: 12/13/2023			
Inspector: Mackenzie Hudson	Stantec PIN: 2028113191	Accidents <input type="checkbox"/> Yes <input checked="" type="checkbox"/> No	
Day of Week: Wednesday	Contract Day: 80	Week: 12	Accident Report #: N/A
High Temp (°F): 78 °F	AM Conditions: Cloudy	PM Conditions: Cloudy	High Tide: 2:12 PM – 2.2'
Low Temp (°F): 65 °F	Wind: 19 to 23 mph	Wind: 19 to 24 mph	Low Tide: 7:24 AM – -0.8'
Canal Worked In: Main B	Stations Worked Between:	5+50	

General

#1 – Prime Contractor – Quality Enterprises:

- Contractor waited for tide to rise before moving the barge to start dredging for the day.
- Turbidity curtain noted in place at station 4+00 in Canal Main B at 12:00pm.
- Canal sediment removal in progress today (Canal Main B) starting at approximately station 5+50. Sediment removal only, no grinding.
- Contractor dredged from 10:20am to 10:40am. Contractor transported hopper to staging area at 1300 Curlew Avenue from 10:45am to 11:30am. Contractor used long reach excavator to unload material from hopper onto staging area from 11:35am to 12:00pm while the push boat transported the other hopper to Canal Main B.
- Contractor resumed dredging from 12:10pm to 12:30pm. Contractor transported hopper to staging area at 1300 Curlew Avenue from 1:00pm to 1:55pm. Contractor used long reach excavator to unload material from hopper onto staging area from 2:00pm to 2:20pm while the push boat transported other hopper to Canal Main B.
- Contractor resumed dredging from 2:30pm to 2:50pm. Contractor transported hopper to staging area at 1300 Curlew Avenue from 2:55pm to 3:35pm. Contractor used long reach excavator to unload material from hopper onto staging area from 3:40pm to 4:00pm while the push boat transported other hopper to Canal Main B.
- Contractor used support boat to open and close turbidity curtain for boaters while dredging was in progress.
- Contractor has a barge, an excavator, one hopper, a support boat, a small fuel cube, and a push boat staged overnight at station 4+00 in Canal Main B1 while working on this canal. Contractor also has one hopper staged in Canal CC-CC between stations 1+00 and 2+00. In addition, the contractor has a long reach excavator, Conex box, a fuel cube, and a water tank on trailer staged on the property located at 1300 Curlew Avenue, Naples, FL 34102. A GPS base station is also set up at this location during project work hours today.
- Three (3) hoppers of material removed.

Contractor(s) and Personnel										
#	Name	Type	#	Hrs.	Type	#	Hrs.	Type	#	Hrs.
1	Prime: Quality Enterprises	PM	0	0	Field Supervisor	0	0	Foreman	0	0
		Skilled Laborer	2	10	Unskilled Laborer	1	10	Safety Director	0	0

Equipment					
Cont/ Sub #	Equipment ID	Description	# Pieces	# Used	Total Hours Used
1	N/A	Barge	1	1	7
1	CAT 323	Excavator - Barge	1	1	3
1	CAT 326	Excavator – Long Reach	1	1	3
1	FL6223TB	Push Boat	1	1	7
1	FL2474PP	Support Boat	1	1	7
1	N/A	Hopper	2	2	7

Visitors			
Name	Company	Hours at Job Site	
		From:	To:

Inspector Name and Position	Hours at Job Site/Office		Total Hours
Mackenzie Hudson, EIT – CEI	From: 8:00 AM	To: 5:00 PM	8.0 hours

S 180 SW 210 240 W 270

☀ 227°SW (T) ● 26°7'20"N, 81°46'57"W ±9ft ▲ 11ft



13 Dec 2023, 10:06:06

Push boat moving barge to Canal Main B.

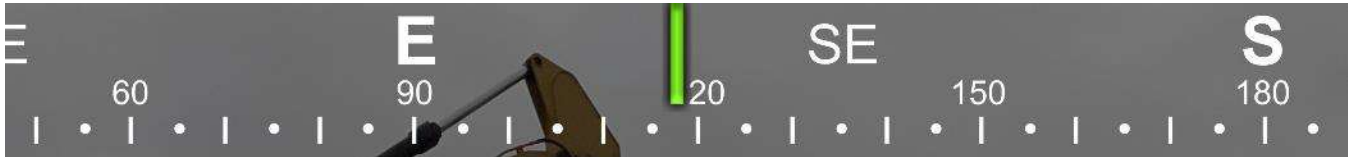
SE S SW
20 150 180 210 240

☀ 190°S (T) ☉ 26°7'19"N, 81°47'3"W ±13ft ▲ 11ft



13 Dec 2023, 10:20:16

323 excavator removing sediment at station 5+50 in Canal Main B.



☉ 118°SE (T) ● 26°8'13"N, 81°47'16"W ±13ft ▲ 17ft



Long reach excavator removing sediment from hopper.

E 90 SE 120 150 S 180 SW 210

☉ 160°S (T) ● 26°8'14"N, 81°47'16"W ±13ft ▲ 23ft



Long reach excavator spreading sediment onto staging area.

SE S SW
120 150 180 210 240

☀ 188°S (T) ☉ 26°7'19"N, 81°47'3"W ±13ft ▲ 12ft



13 Dec 2023, 12:12:57

323 excavator removing sediment at station 5+50 in Canal Main B.



☀ 184°S (T) ☉ 26°7'19"N, 81°47'3"W ±22ft ▲ 4ft



Push boat taking hopper to staging area.



☉ 130°SE (T) ● 26°8'13"N, 81°47'16"W ±9ft ▲ 13ft



13 Dec 2023, 13:59:36

Long reach excavator removing sediment from hopper.



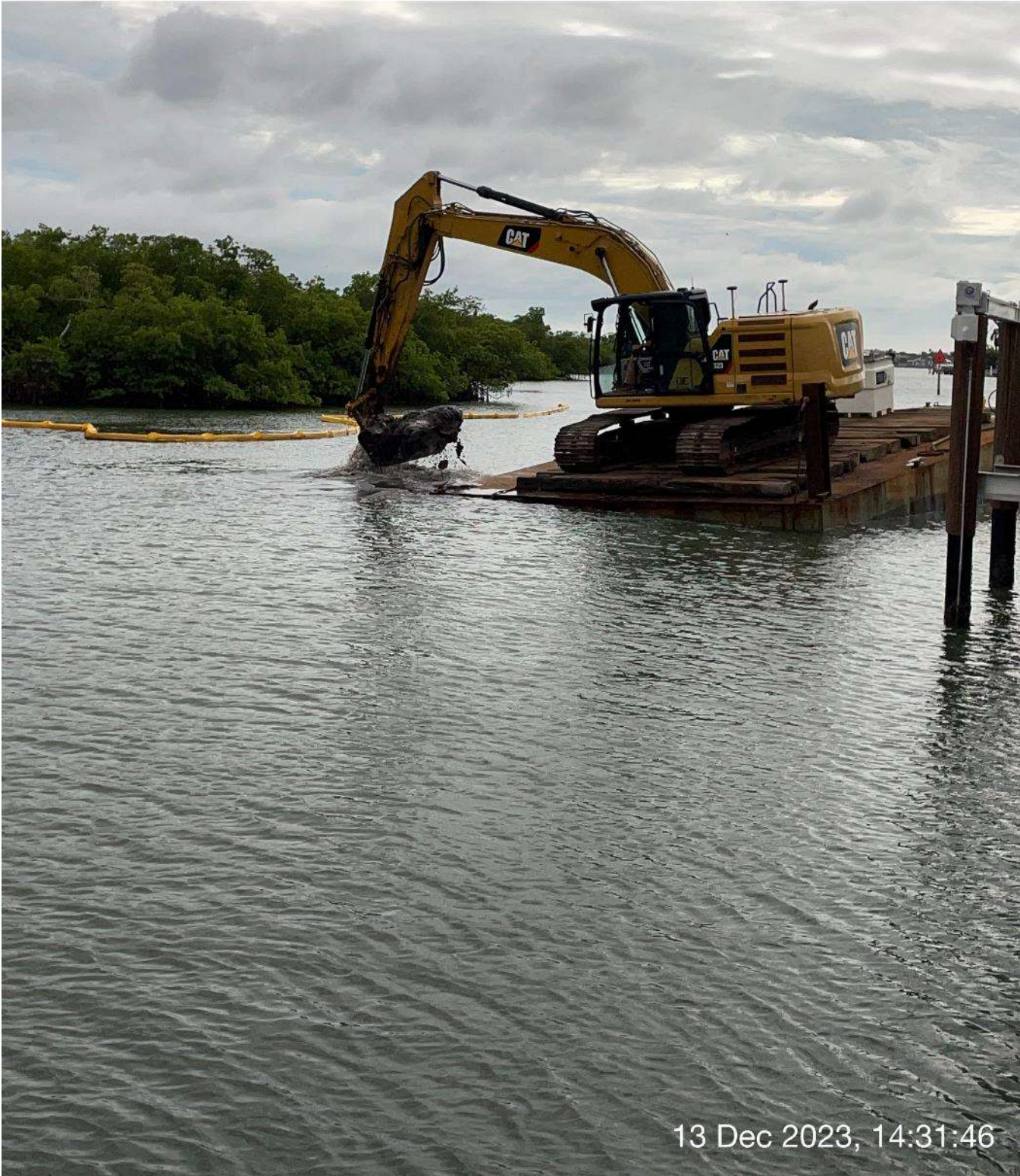
☉ 149°SE (T) ☉ 26°8'14"N, 81°47'16"W ±13ft ▲ 9ft



Long reach excavator spreading sediment onto staging area.



☉ 180°S (T) ☉ 26°7'19"N, 81°47'3"W ±13ft ▲ 9ft



323 excavator removing sediment at station 5+50 in Canal Main B.



☉ 117°SE (T) ☉ 26°8'13"N, 81°47'16"W ±9ft ▲ 48ft



13 Dec 2023, 15:42:18

Long reach excavator removing sediment from hopper.

E SE S
0 90 120 150 180

☀ 131°SE (T) ● 26°8'14"N, 81°47'16"W ±13ft ▲ 11ft



13 Dec 2023, 15:42:49

Long reach excavator spreading sediment onto staging area.



DAILY REPORT OF CONSTRUCTION
 21-036 EAST NAPLES BAY
 DREDGING AND ROCK REMOVAL PROJECT



Date: 12/14/2023			
Inspector: Mackenzie Hudson	Stantec PIN: 2028113191	Accidents <input type="checkbox"/> Yes <input checked="" type="checkbox"/> No	
Day of Week: Thursday	Contract Day: 81	Week: 12	Accident Report #: N/A
High Temp (°F): 76 °F	AM Conditions: Cloudy	PM Conditions: Cloudy	High Tide: 3:04 PM – 2.1'
Low Temp (°F): 67 °F	Wind: 22 to 24 mph	Wind: 25 mph	Low Tide: 8:10 AM – -0.9'
Canal Worked In: Main B	Stations Worked Between:	5+25	

General

#1 – Prime Contractor – Quality Enterprises:

- Contractor waited for tide to rise before moving the barge to start dredging for the day.
- Turbidity curtain noted in place at station 4+00 in Canal Main B at 12:00pm.
- Canal sediment removal in progress today (Canal Main B) starting at approximately station 5+25. Sediment removal only, no grinding.
- Contractor dredged from 10:50am to 11:05am. Contractor transported hopper to staging area at 1300 Curlew Avenue from 11:10am to 11:45am. Contractor used long reach excavator to unload material from hopper onto staging area from 11:50am to 12:10pm while the push boat transported the other hopper to Canal Main B.
- Contractor resumed dredging from 12:35pm to 12:55pm. Contractor transported hopper to staging area at 1300 Curlew Avenue from 1:00pm to 1:55pm. Contractor used long reach excavator to unload material from hopper onto staging area from 2:00pm to 2:20pm while the push boat transported other hopper to Canal Main B.
- Contractor resumed dredging from 2:35pm to 2:55pm. Contractor transported hopper to staging area at 1300 Curlew Avenue from 3:00pm to 3:45pm. Contractor used long reach excavator to unload material from hopper onto staging area from 3:40pm to 4:10pm while the push boat transported other hopper to Canal Main B.
- Contractor used support boat to open and close turbidity curtain for boaters while dredging was in progress.
- Contractor has a barge, an excavator, one hopper, a support boat, a small fuel cube, and a push boat staged overnight at station 4+00 in Canal Main B1 while working on this canal. Contractor also has one hopper staged in Canal CC-CC between stations 1+00 and 2+00. In addition, the contractor has a long reach excavator, Conex box, a fuel cube, and a water tank on trailer staged on the property located at 1300 Curlew Avenue, Naples, FL 34102. A GPS base station is also set up at this location during project work hours today.
- Three (3) hoppers of material removed.

Contractor(s) and Personnel										
#	Name	Type	#	Hrs.	Type	#	Hrs.	Type	#	Hrs.
1	Prime: Quality Enterprises	PM	0	0	Field Supervisor	0	0	Foreman	0	0
		Skilled Laborer	2	10	Unskilled Laborer	1	10	Safety Director	0	0

Equipment					
Cont/ Sub #	Equipment ID	Description	# Pieces	# Used	Total Hours Used
1	N/A	Barge	1	1	7
1	CAT 323	Excavator - Barge	1	1	3
1	CAT 326	Excavator – Long Reach	1	1	3
1	FL6223TB	Push Boat	1	1	7
1	FL2474PP	Support Boat	1	1	7
1	N/A	Hopper	2	2	7

Visitors			
Name	Company	Hours at Job Site	
		From:	To:

Inspector Name and Position	Hours at Job Site/Office		Total Hours
Mackenzie Hudson, EIT – CEI	From: 8:00 AM	To: 5:00 PM	8.0 hours

S 180 SW 210 W 270 300

☀ 229°SW (T) ● 26°7'20"N, 81°46'58"W ±29ft ▲ 9ft



Push boat moving barge to Canal Main B.

SE 150 S 180 SW 210 240

☉ 193°S (T) ☉ 26°7'19"N, 81°47'3"W ±13ft ▲ 7ft



14 Dec 2023, 10:51:13

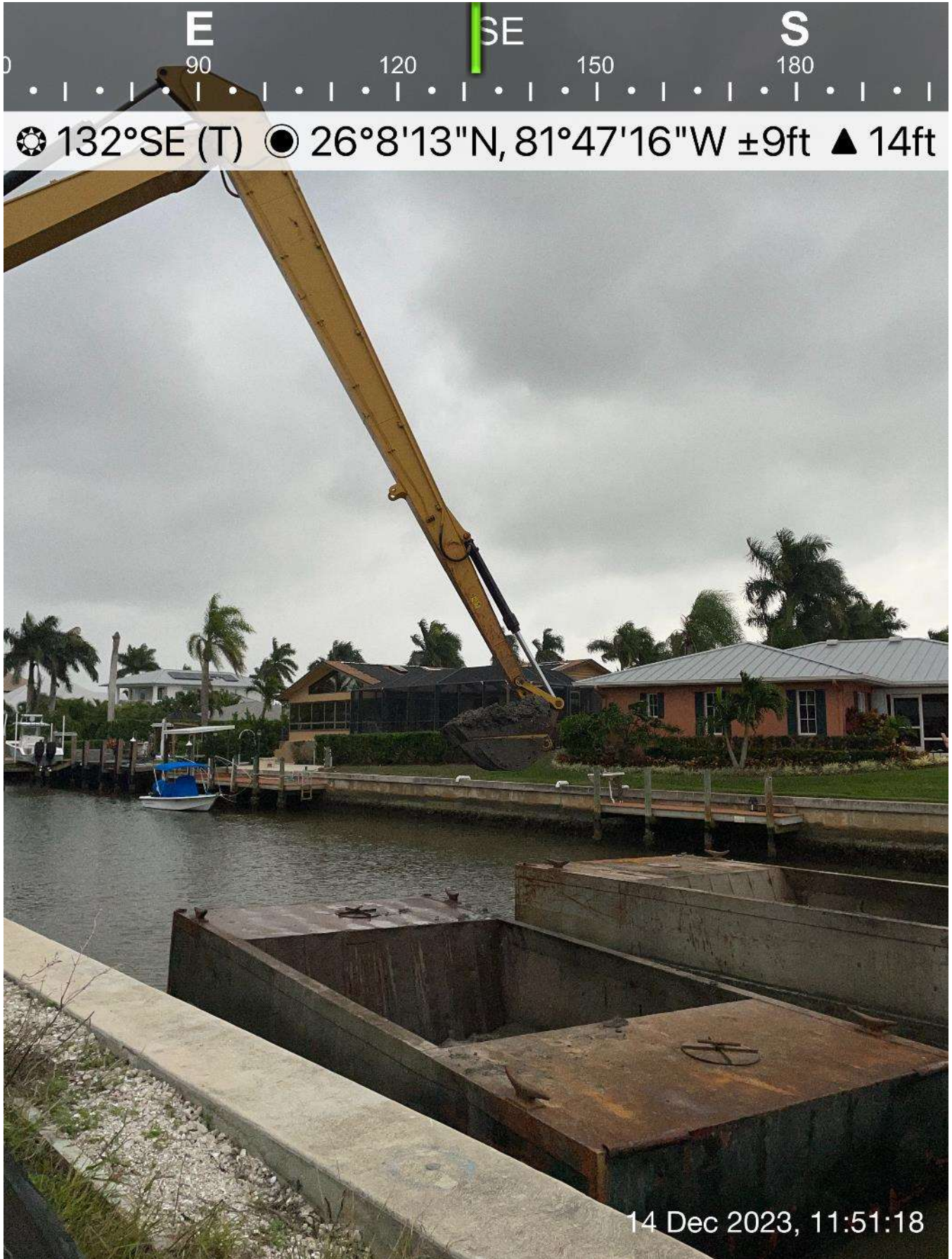
323 excavator removing sediment at station 5+25.



☀ 185°S (T) ● 26°7'19"N, 81°47'3"W ±9ft ▲ 5ft



Push boat taking hopper to staging area.



Long reach excavator removing sediment from hopper.



☀ 139°SE (T) ☉ 26°8'14"N, 81°47'16"W ±13ft ▲ 18ft



14 Dec 2023, 11:51:49

Long reach excavator spreading sediment onto staging area.

SE 150 S 180 SW 210 240

☉ 193°S (T) ☉ 26°7'19"N, 81°47'3"W ±13ft ▲ 9ft



14 Dec 2023, 12:34:43

323 excavator removing sediment at station 5+25.



☀ 186°S (T) ● 26°7'19"N, 81°47'3"W ±9ft ▲ 10ft



14 Dec 2023, 12:58:29

Push boat taking hopper to staging area.

E 90 SE 120 150 S 180

☉ 130°SE (T) ● 26°8'13"N, 81°47'16"W ±9ft ▲ 12ft



Long reach excavator removing sediment from hopper.



☉ 139°SE (T) ☉ 26°8'14"N, 81°47'16"W ±13ft ▲ 11ft



14 Dec 2023, 13:58:48

Long reach excavator spreading sediment onto staging area.

SE S SW
0 150 180 210 240

☀ 192°S (T) ● 26°7'19"N, 81°47'3"W ±13ft ▲ 24ft



323 excavator removing sediment at station 5+25.

E 90 120 SE 150 S 180
☉ 133°SE (T) ☉ 26°8'13"N, 81°47'16"W ±9ft ▲ 13ft



Long reach excavator removing sediment from hopper.



☀ 131°SE (T) ● 26°8'14"N, 81°47'16"W ±13ft ▲ 14ft



14 Dec 2023, 15:50:32

Long reach excavator spreading sediment onto staging area.



DAILY REPORT OF CONSTRUCTION
 21-036 EAST NAPLES BAY
 DREDGING AND ROCK REMOVAL PROJECT



Date: 12/15/2023			
Inspector: Mackenzie Hudson	Stantec PIN: 2028113191		Accidents <input type="checkbox"/> Yes <input checked="" type="checkbox"/> No
Day of Week: Friday	Contract Day: 82	Week: 12	Accident Report #: N/A
High Temp (°F): 75 °F	AM Conditions: Cloudy	PM Conditions: Cloudy	High Tide: 3:54 PM – 2.1'
Low Temp (°F): 68 °F	Wind: 24 to 25 mph	Wind: 25 mph	Low Tide: 8:57 AM – -0.8'
Canal Worked In: Main B	Stations Worked Between:	5+00	

General
<p><u>#1 – Prime Contractor – Quality Enterprises:</u></p> <ul style="list-style-type: none"> • Contractor waited for tide to rise before moving the barge to start dredging for the day. • Turbidity curtain noted in place around the barge at 12:50pm. • Canal sediment removal in progress today (Canal Main B) starting at approximately station 5+00. Sediment removal only, no grinding. • Contractor dredged from 11:10am to 11:25am. Contractor transported hopper to staging area at 1300 Curlew Avenue from 11:30am to 12:10pm. Contractor used long reach excavator to unload material from hopper onto staging area from 12:15pm to 12:30pm while the push boat transported the other hopper to Canal Main B. • Contractor resumed dredging from 1:00pm to 1:20pm. Contractor transported hopper to staging area at 1300 Curlew Avenue from 1:40pm to 2:30pm. Contractor used long reach excavator to unload material from hopper onto staging area from 2:35pm to 2:50pm while the push boat transported other hopper to Canal Main B. • Contractor resumed dredging from 3:05pm to 3:20pm. Contractor transported hopper to staging area at 1300 Curlew Avenue from 3:25pm to 4:05pm. Contractor used long reach excavator to unload material from hopper onto staging area from 4:10pm to 4:35pm while the push boat transported other hopper to Canal Main B. • Contractor used support boat to open and close turbidity curtain for boaters while dredging was in progress. • Contractor has a barge, an excavator, one hopper, a support boat, a small fuel cube, and a push boat staged overnight at station 4+00 in Canal Main B1 while working on this canal. Contractor also has one hopper staged in Canal CC-CC between stations 1+00 and 2+00. In addition, the contractor has a long reach excavator, Conex box, a fuel cube, and a water tank on trailer staged on the property located at 1300 Curlew Avenue, Naples, FL 34102. A GPS base station is also set up at this location during project work hours today. • Three (3) hoppers of material removed.

Contractor(s) and Personnel										
#	Name	Type	#	Hrs.	Type	#	Hrs.	Type	#	Hrs.
1	Prime: Quality Enterprises	PM	0	0	Field Supervisor	0	0	Foreman	0	0
		Skilled Laborer	2	10	Unskilled Laborer	1	10	Safety Director	0	0

Equipment					
Cont/ Sub #	Equipment ID	Description	# Pieces	# Used	Total Hours Used
1	N/A	Barge	1	1	7
1	CAT 323	Excavator - Barge	1	1	3
1	CAT 326	Excavator – Long Reach	1	1	3
1	FL6223TB	Push Boat	1	1	7
1	FL2474PP	Support Boat	1	1	7
1	N/A	Hopper	2	2	7

Visitors			
Name	Company	Hours at Job Site	
		From:	To:

Inspector Name and Position	Hours at Job Site/Office		Total Hours
Mackenzie Hudson, EIT – CEI	From: 8:00 AM	To: 5:00 PM	8.0 hours

E S SW W
150 180 210 240 270

☀ 206°SW (T) ☉ 26°7'20"N, 81°46'58"W ±13ft ▲ 31ft



15 Dec 2023, 07:57:58

Push boat and support boat sitting on bottom of canal in Canal Main B1.

S 180 SW 210 240 W 270

☀ 223°SW (T) ☉ 26°7'20"N, 81°46'57"W ±9ft ▲ 5ft



15 Dec 2023, 10:59:10

Contractor moving barge to Canal Main B.



☉ 112°E (T) ● 26°7'18"N, 81°47'4"W ±13ft ▲ 8ft



15 Dec 2023, 11:16:33

323 excavator removing sediment at station 5+00 in Canal Main B.



☀ 155°SE (T) ● 26°7'17"N, 81°47'4"W ±13ft ▲ 10ft



15 Dec 2023, 11:28:22

Push boat taking hopper to staging area.



☉ 134°SE (T) ● 26°8'13"N, 81°47'16"W ±13ft ▲ 7ft



15 Dec 2023, 12:13:24

Long reach excavator removing sediment from hopper.



☉ 141°SE (T) ● 26°8'14"N, 81°47'16"W ±13ft ▲ 7ft



Long reach excavator spreading sediment onto staging area.



☀ 76°E (T) ● 26°7'17"N, 81°47'4"W ±13ft ▲ -5ft



15 Dec 2023, 12:55:43

Turbidity curtain in place around barge.



☉ 102°E (T) ☉ 26°7'17"N, 81°47'4"W ±13ft ▲ 4ft



15 Dec 2023, 12:58:13

323 excavator removing sediment at station 5+00 in Canal Main B.

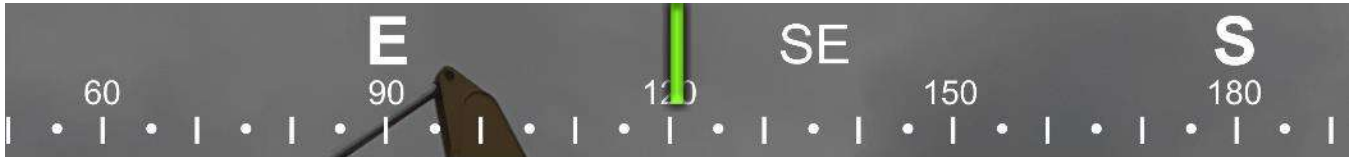


☉ 157°SE (T) ● 26°7'17"N, 81°47'4"W ±9ft ▲ 0ft



15 Dec 2023, 13:43:34

Push boat taking hopper to staging area.



☀ 121°SE (T) ● 26°8'13"N, 81°47'16"W ±16ft ▲ 15ft



15 Dec 2023, 14:33:37

Long reach excavator removing sediment from hopper.



☉ 143°SE (T) ● 26°8'14"N, 81°47'16"W ±9ft ▲ -9ft



Long reach excavator spreading sediment onto staging area.



☉ 143°SE (T) ● 26°7'17"N, 81°47'4"W ±19ft ▲ 8ft



15 Dec 2023, 15:07:35

323 excavator removing sediment at station 5+00 in Canal Main B.

E 90 SE 120 150 180 S SW 210

☀ 158°(null) (T) ● 26°7'17"N, 81°47'4"W ±13ft ▲ 14ft



15 Dec 2023, 15:21:22

Push boat taking hopper to staging area.



☉ 123°SE (T) ● 26°8'13"N, 81°47'16"W ±9ft ▲ 3ft



15 Dec 2023, 16:12:28

Long reach excavator removing sediment from hopper.



☉ 143°SE (T) ● 26°8'14"N, 81°47'16"W ±13ft ▲ 6ft



Long reach excavator spreading sediment onto staging area.



DAILY REPORT OF CONSTRUCTION
 21-036 EAST NAPLES BAY
 DREDGING AND ROCK REMOVAL PROJECT



Date: 12/16/2023			
Inspector: Mackenzie Hudson	Stantec PIN: 2028113191		Accidents <input type="checkbox"/> Yes <input checked="" type="checkbox"/> No
Day of Week: Saturday	Contract Day: 83	Week: 12	Accident Report #: N/A
High Temp (°F): 71 °F	AM Conditions: Cloudy	PM Conditions: Rainy	High Tide: 4:43 PM – 2.1'
Low Temp (°F): 67 °F	Wind: 14 to 16 mph	Wind: 9 to 15 mph	Low Tide: 9:45 AM – -0.6'
Canal Worked In: N/A	Stations Worked Between:	N/A	

General	
#1 – Prime Contractor – Quality Enterprises:	
<ul style="list-style-type: none"> Contractor loaded material from the staging area at 1300 Curlew Avenue into dump trucks to be hauled off site. Ten (10) truck loads of material removed. 	

Contractor(s) and Personnel										
#	Name	Type	#	Hrs.	Type	#	Hrs.	Type	#	Hrs.
1	Prime: Quality Enterprises	PM	0	0	Field Supervisor	0	0	Foreman	0	0
		Skilled Laborer	1	5	Unskilled Laborer	0	0	Safety Director	0	0

Equipment					
Cont/ Sub #	Equipment ID	Description	# Pieces	# Used	Total Hours Used
1	N/A	Barge	1	0	0
1	CAT 323	Excavator - Barge	1	0	0
1	CAT 326	Excavator – Long Reach	1	1	5
1	FL6223TB	Push Boat	1	0	0
1	FL2474PP	Support Boat	1	0	0
1	N/A	Hopper	2	0	0

Visitors			
Name	Company	Hours at Job Site	
		From:	To:

Inspector Name and Position	Hours at Job Site/Office		Total Hours
Mackenzie Hudson, EIT – CEI	From: N/A	To: N/A	0.0 hours