



WEEKLY SUMMARY REPORT – CONTRACT WEEK 09

21-036 EAST NAPLES BAY

DREDGING AND ROCK REMOVAL PROJECT



Date: 12/13/2021 to 12/17/2021			
Inspectors: Sam Boyd	Stantec PIN: 2028113191		Accidents <input type="checkbox"/> Yes <input checked="" type="checkbox"/> No
Days of Week: Monday to Friday	Contract Days: 57 to 61	Total Days: 365	Accident Report #: N/A
Canal(s) Worked In: CC-CC	Stations Worked Between: 0+00 to 4+00		

General

Remarks

#1 – Prime Contractor – Quality Enterprises:

Monday 12-13-2021:

- Contractor’s equipment is staged in canal CC-CC at station 1+50; this equipment includes an excavator mounted on the barge, a hopper, and a push boat. Contractor also has a long-reach excavator, a water tank, and two fuel cubes staged on the property located at 1300 Curlew Avenue, Naples, FL, 34102.
- Contractor installed turbidity curtain across the mouth of the Canal CC-CC.
- Contractor used 323 excavator with the bucket to check bottom elevations and removed material between stations 2+00 and 1+50 and transferred material to hopper.
- Contractor used 326 excavator to transfer 1.5 hoppers of material to the dewatering site at 1300 Curlew Avenue.
- Contractor added two more sections to the turbidity curtain (4 total now) and extended the curtain outward to station 0+50.
- Contractor switched from bucket to Epiroc grinder attachment on 323 excavator.
- Contractor used 323 excavator to grind rock at station 4+00.
- Push boat was used to move barge, 323 excavator, and hopper as necessary for removing material.

Tuesday 12-14-2021:

- Contractor’s equipment is staged in canal CC-CC at station 1+50; this equipment includes an excavator mounted on the barge, a hopper, and a push boat. Contractor also has a long-reach excavator, a water tank, and two fuel cubes staged on the property located at 1300 Curlew Avenue, Naples, FL, 34102.
- Contractor installed turbidity curtain across the mouth of the Canal CC-CC.
- Contractor used 323 excavator to grind rock between stations 1+50 and 1+00.
- Push boat was used to move barge, 323 excavator, and hopper as necessary for removing material.

Wednesday 12-15-2021:

- Contractor’s equipment is staged in canal CC-CC at station 1+50; this equipment includes an excavator mounted on the barge, a hopper, and a push boat. Contractor also has a long-reach excavator, a water tank, and two fuel cubes staged on the property located at 1300 Curlew Avenue, Naples, FL, 34102.
- Contractor installed turbidity curtain around the barge.
- Contractor pumped water out from inside the bottom of the barge.



WEEKLY SUMMARY REPORT – CONTRACT WEEK 09

21-036 EAST NAPLES BAY

DREDGING AND ROCK REMOVAL PROJECT



- Contractor installed turbidity curtain across the mouth of Canal CC-CC after Collier Seawall and Dock exited the canal.
- Contractor used 323 excavator to grind rock between stations 1+50 and 1+00.
- Contractor attached 2 more turbidity curtains (6 total) extending out past the mouth of Canal CC-CC.
- Contractor used 323 excavator to grind rock between stations 1+00 and 0+00.
- Push boat was used to move barge, 323 excavator, and hopper as necessary for removing material.
- Contractor left the barge and 323 excavator between stations 0+00 and 0+50 with the turbidity curtain still surrounding the barge.

Thursday 12-16-2021:

- Contractor's equipment is staged in canal CC-CC at station 0+50; this equipment includes an excavator mounted on the barge. The contractor also had a hopper and a push boat staged in Canal CC-CC at station 1+50. Contractor also has a long-reach excavator, a water tank, and two fuel cubes staged on the property located at 1300 Curlew Avenue, Naples, FL, 34102.
- Contractor installed turbidity curtain across the mouth of Canal CC-CC.
- Contractor used push boat to transport hopper from station 1+50 to station 0+50.
- Contractor used 323 excavator to check bottom elevations and remove material from stations 0+00 to 0+50. 1 hopper of material was transferred to the hopper.
- Turbidity curtain broke and contractor had to reattach it (6 sections of curtains tied together).
- Contractor removed 1 hopper of material from the hopper and transferred it to the dewatering site at 1300 Curlew Avenue.
- Contractor used 323 excavator to check bottom elevations and remove material from stations 0+00 to 1+00. 1 hopper of material was transferred to the hopper.
- Contractor redistributed material on the dewatering site to make room for more material being removed from Canal CC-CC.
- Contractor removed 1 hopper of material from the hopper and transferred it to the dewatering site at 1300 Curlew Avenue (2 hoppers of material transferred to dewatering site today).
- Push boat was used to move barge, 323 excavator, and hopper as necessary for removing material.
- Contractor left the barge, 323 excavator, push boat, and hopper between stations 1+00 and 1+50 with the turbidity curtain still surrounding the barge.

Friday 12-17-2021:

- Contractor's equipment is staged in canal CC-CC at station 1+00; this equipment includes an excavator mounted on the barge. The contractor also had a hopper and a push boat staged in Canal CC-CC at station 1+50. Contractor also has a long-reach excavator, a water tank, and two fuel cubes staged on the property located at 1300 Curlew Avenue, Naples, FL, 34102.
- Contractor installed turbidity curtain across the mouth of Canal CC-CC.



WEEKLY SUMMARY REPORT – CONTRACT WEEK 09
21-036 EAST NAPLES BAY
DREDGING AND ROCK REMOVAL PROJECT



- Contractor used push boat and GPS rover to check bottom elevations down all of Canal CC-CC.
- Contractor used 323 excavator to check bottom elevations and remove material from stations 1+00 to 1+50.
- Contractor switched to the shallow bucket attachment for 323 excavator.
- Contractor used 323 excavator to check bottom elevations and remove material from station 3+50 to 3+00.
- Contractor used 326 excavator to transfer one hopper of material to the dewatering site at 1300 Curlew Avenue.
- Push boat was used to move barge, 323 excavator, and hopper as necessary for removing material.
- Contractor used fire hydrant outside of 1300 Curlew Avenue to fill the water tank.
- Contractor used water tank to clean all equipment.
- Contractor left the barge, 323 excavator, push boat, and hopper between stations 1+00 and 1+50 for the weekend.

Note: Daily reports with pictures attached for the week.



DAILY REPORT OF CONSTRUCTION
 21-036 EAST NAPLES BAY
 DREDGING AND ROCK REMOVAL PROJECT



Date: 12/13/2021			
Inspectors: SB	Stantec PIN: 2028113191	Accidents <input type="checkbox"/> Yes <input checked="" type="checkbox"/> No	
Day of Week: Monday	Contract Day: 57/365	Week: 9	Accident Report #: N/A
High Temp (°F): 86°F	AM Conditions: Foggy	PM Conditions: Sunny	High Tide: 9:32 AM – +1.9'
Low Temp (°F): 68°F	Wind: 9 mph	Wind: 10 mph	Low Tide: 3:13 PM – +0.9'
Canal Worked In: CC-CC	Stations Worked Between:	1+50 to 4+00	

General

#1 – Prime Contractor – Quality Enterprises:

- Contractor’s equipment is staged in canal CC-CC at station 1+50; this equipment includes an excavator mounted on the barge, a hopper, and a push boat. Contractor also has a long-reach excavator, a water tank, and two fuel cubes staged on the property located at 1300 Curlew Avenue, Naples, FL, 34102.
- Contractor installed turbidity curtain across the mouth of the Canal CC-CC.
- Contractor used 323 excavator with the bucket to check bottom elevations and removed material between stations 2+00 and 1+50 and transferred material to hopper.
- Contractor used 326 excavator to transfer 1.5 hoppers of material to the dewatering site at 1300 Curlew Avenue.
- Contractor added two more sections to the turbidity curtain (4 total now) and extended the curtain outward to station 0+50.
- Contractor switched from bucket to Epiroc grinder attachment on 323 excavator.
- Contractor used 323 excavator to grind rock at station 4+00.
- Push boat was used to move barge, 323 excavator, and hopper as necessary for removing material.

Contractor(s) and Personnel										
#	Name	Type	#	Hrs.	Type	#	Hrs.	Type	#	Hrs.
1	Prime: Quality Enterprises	PM	0	0	Boat Captain	1	9	Foreman	0	0
		Excavator Operator	1	9	Truck Driver	0	0	Assistant	1	9
		Technician	0	0	Superintendent	1	9	VP	0	0

Equipment					
Cont/ Sub #	Equipment ID	Description	# Pieces	# Used	Total Hours Used
1	N/A	Barge	1	1	8
1	CAT 323	Excavator	1	1	7
1	CAT 326	Excavator	1	1	3
1	02016	Front End Loader	1	0	0
1	FL6223TB	Push Boat	1	1	5
1	FL2474PP	Support Boat	1	0	0
1	N6143X	Fuel Truck	1	0	0
1	P9457E	Water Truck	1	0	0
1	725RZM	Water Tank	1	0	0
1	Z67EAZ	Dump truck	1	0	0
1	MB38DQ	Utility Truck	1	0	0
1	5178CR	Transport Truck	1	0	0

Visitors			
Name	Company	Hours at Job Site	
		From:	To:
Jeff Tabar	Stantec	3:00 pm	4:00 pm

Inspector Name and Position	Hours at Job Site/Office		Total Hours
Sam Boyd, EIT	From: 8:00 AM	To: 4:30 PM	8.5 hours



☉ 208°SW (T) ☉ 26°8'13"N, 81°47'16"W ±26ft ▲ 8ft



Turbidity Curtain across the mouth of Canal CC-CC

S 150 180 210 240 270 W
SW

☀ 215°SW (T) ● 26°8'13"N, 81°47'15"W ±13ft ▲ 9ft



13 Dec 2021, 08:26:10

323 excavator removing material from station 1+50 and transferring it to hopper



☉ 210°SW (T) ● 26°8'13"N, 81°47'15"W ±45ft ▲ 9ft



13 Dec 2021 08:26:46

323 excavator removing material from station 1+50 and transferring it to hopper

S 150 180 210 240 270 W
SW

☉ 210°SW (T) ● 26°8'13"N, 81°47'15"W ±49ft ▲ 8ft



13 Dec 2021, 08:39:58

323 excavator lifting spud to allow push boat to move barge from station 4+00 to 3+50

SW W NW
210 240 270 300 330
☉ 270°W (T) ☉ 26°8'13"N, 81°47'16"W ±118ft ▲ 8ft



326 excavator transferring material from hopper to dewatering site at 1300 Curlew Avenue

W 270 NW 300 N 330 0

☉ 316°NW (T) ☉ 26°8'13"N, 81°47'15"W ±19ft ▲ 9ft



13 Dec 2021, 08:55:16

326 excavator transferring material from hopper to dewatering site at 1300 Curlew Avenue

SE 150 S 180 210 SW 240 W 270

☉ 205°SW (T) ● 26°8'13"N, 81°47'16"W ±39ft ▲ 9ft

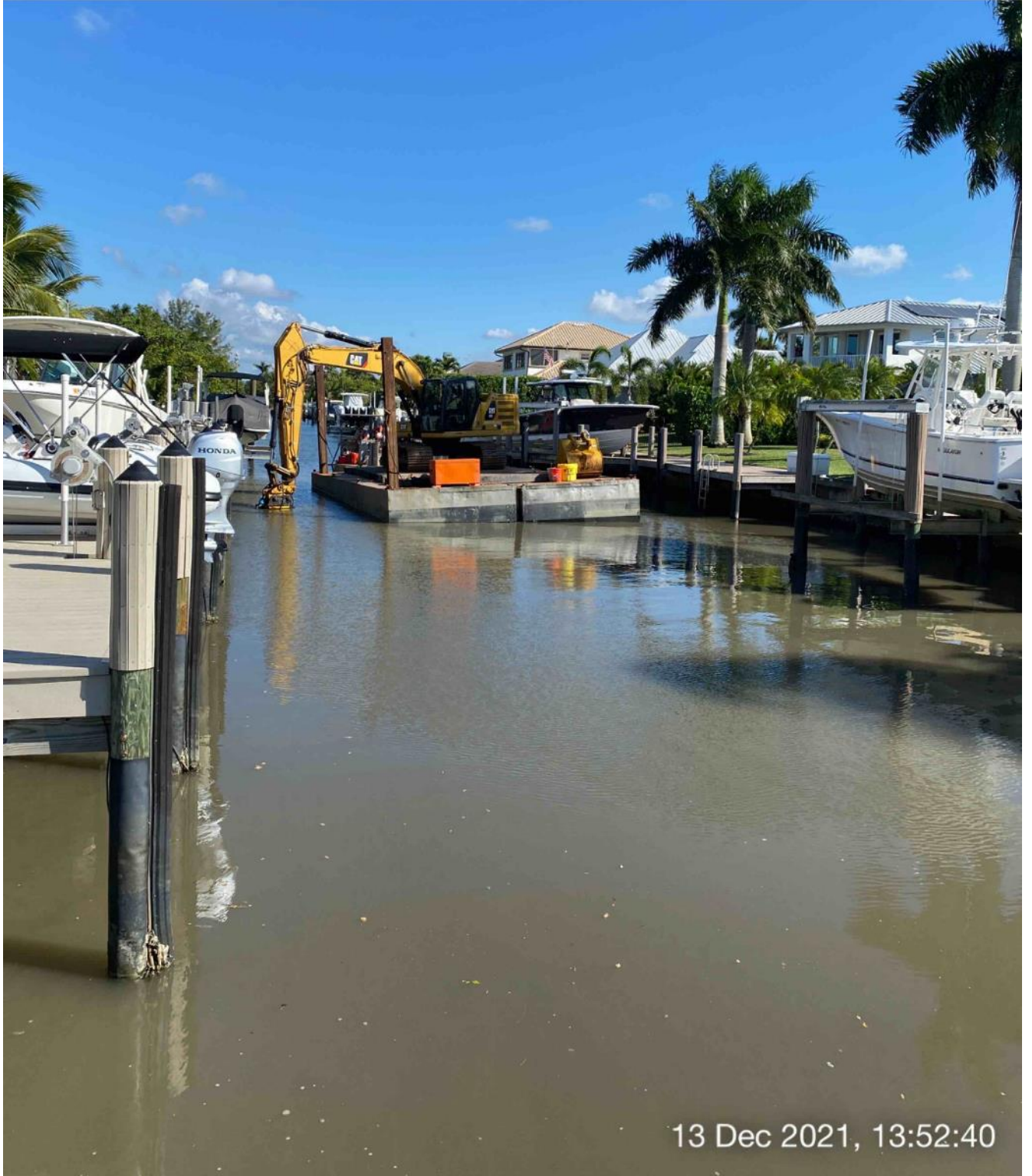


Turbidity curtain across the mouth of Canal CC-CC

E S SW W
150 180 210 240 270
☉ 206°SW (T) ☉ 26°8'14"N, 81°47'16"W ±22ft ▲ 8ft



Turbidity curtain across the mouth of Canal CC-CC extended to station 0+50



13 Dec 2021, 13:52:40

323 excavator grinding rock at station 4+00



DAILY REPORT OF CONSTRUCTION
21-036 EAST NAPLES BAY
DREDGING AND ROCK REMOVAL PROJECT



Date: 12/14/2021			
Inspectors: SB	Stantec PIN: 2028113191	Accidents <input type="checkbox"/> Yes <input checked="" type="checkbox"/> No	
Day of Week: Tuesday	Contract Day: 58/365	Week: 9	Accident Report #: N/A
High Temp (°F): 84°F	AM Conditions: Cloudy	PM Conditions: Sunny	High Tide: 10:48 AM – +2.0'
Low Temp (°F): 68°F	Wind: 6 mph	Wind: 11 mph	Low Tide: 4:04 PM – +1.0'
Canal Worked In: CC-CC	Stations Worked Between:	1+50 to 4+00	

General	
#1 – Prime Contractor – Quality Enterprises:	
<ul style="list-style-type: none">• Contractor's equipment is staged in canal CC-CC at station 1+50; this equipment includes an excavator mounted on the barge, a hopper, and a push boat. Contractor also has a long-reach excavator, a water tank, and two fuel cubes staged on the property located at 1300 Curlew Avenue, Naples, FL, 34102.• Contractor installed turbidity curtain across the mouth of the Canal CC-CC.• Contractor used 323 excavator to grind rock between stations 1+50 and 1+00.• Push boat was used to move barge, 323 excavator, and hopper as necessary for removing material.	

Contractor(s) and Personnel										
#	Name	Type	#	Hrs.	Type	#	Hrs.	Type	#	Hrs.
1	Prime: Quality Enterprises	PM	0	0	Boat Captain	1	9	Foreman	0	0
		Excavator Operator	1	9	Truck Driver	0	0	Assistant	1	9
		Technician	0	0	Superintendent	1	9	VP	0	0

Equipment					
Cont/ Sub #	Equipment ID	Description	# Pieces	# Used	Total Hours Used
1	N/A	Barge	1	1	8
1	CAT 323	Excavator	1	1	8
1	CAT 326	Excavator	1	0	0
1	02016	Front End Loader	1	0	0
1	FL6223TB	Push Boat	1	1	2
1	FL2474PP	Support Boat	1	0	0
1	N6143X	Fuel Truck	1	0	0
1	P9457E	Water Truck	1	0	0
1	725RZM	Water Tank	1	0	0
1	Z67EAZ	Dump truck	1	0	0
1	MB38DQ	Utility Truck	1	0	0
1	5178CR	Transport Truck	1	0	0

Visitors			
Name	Company	Hours at Job Site	
		From:	To:

Inspector Name and Position	Hours at Job Site/Office		Total Hours
Sam Boyd, EIT	From: 8:15 AM	To: 4:15 PM	8.0 hours



☉ 212°SW (T) ● 26°8'13"N, 81°47'16"W ±26ft ▲ 9ft



14 Dec 2021, 08:23:15

Turbidity Curtain across the mouth of Canal CC-CC

E 150 S 180 210 SW 240 W 270

☉ 206°SW (T) ☉ 26°8'13"N, 81°47'16"W ±13ft ▲ 8ft



14 Dec 2021, 08:23:57

323 excavator grinding rock at station 1+50

S 180 SW 210 240 W 270 NW 300
☉ 249°W (T) ☉ 26°8'13"N, 81°47'16"W ±16ft ▲ 8ft



14 Dec 2021, 11:39:09

323 excavator grinding rock at station 1+50



☀ 194°S (T) ● 26°8'13"N, 81°47'16"W ±36ft ▲ 8ft



14 Dec 2021, 11:42:09

323 excavator grinding rock at station 1+50



323 excavator grinding rock at station 1+50



☀ 193°S (T) ☉ 26°8'13"N, 81°47'16"W ±13ft ▲ 7ft



14 Dec 2021, 15:47:32

323 excavator grinding rock at station 1+00



☉ 144°SE (T) ● 26°8'13"N, 81°47'15"W ±13ft ▲ 10ft



Removed material at dewatering site at 1300 Curlew Avenue

SE S SW
120 150 180 210 240
☀ 179°S (T) ☉ 26°8'14"N, 81°47'15"W ±13ft ▲ 9ft



Removed material at dewatering site at 1300 Curlew Avenue



DAILY REPORT OF CONSTRUCTION
 21-036 EAST NAPLES BAY
 DREDGING AND ROCK REMOVAL PROJECT



Date: 12/15/2021			
Inspectors: SB	Stantec PIN: 2028113191	Accidents <input type="checkbox"/> Yes <input checked="" type="checkbox"/> No	
Day of Week: Wednesday	Contract Day: 59/365	Week: 9	Accident Report #: N/A
High Temp (°F): 84°F	AM Conditions: Sunny	PM Conditions: Cloudy	High Tide: 11:37 AM – +2.0'
Low Temp (°F): 66°F	Wind: 7 mph	Wind: 8 mph	Low Tide: 4:50 PM – +1.1'
Canal Worked In: CC-CC	Stations Worked Between:	0+50 to 1+50	

General
<p>#1 – Prime Contractor – Quality Enterprises:</p> <ul style="list-style-type: none"> Contractor’s equipment is staged in canal CC-CC at station 1+50; this equipment includes an excavator mounted on the barge, a hopper, and a push boat. Contractor also has a long-reach excavator, a water tank, and two fuel cubes staged on the property located at 1300 Curlew Avenue, Naples, FL, 34102. Contractor installed turbidity curtain around the barge. Contractor pumped water out from inside the bottom of the barge. Contractor installed turbidity curtain across the mouth of Canal CC-CC after Collier Seawall and Dock exited the canal. Contractor used 323 excavator to grind rock between stations 1+50 and 1+00. Contractor attached 2 more turbidity curtains (5 total) extending out past the mouth of Canal CC-CC. Contractor used 323 excavator to grind rock between stations 1+00 and 0+00. Push boat was used to move barge, 323 excavator, and hopper as necessary for removing material. Contractor left the barge and 323 excavator between stations 0+00 and 0+50 with the turbidity curtain still surrounding the barge.

Contractor(s) and Personnel										
#	Name	Type	#	Hrs.	Type	#	Hrs.	Type	#	Hrs.
1	Prime: Quality Enterprises	PM	0	0	Boat Captain	1	9	Foreman	0	0
		Excavator Operator	1	9	Truck Driver	0	0	Assistant	1	9
		Technician	0	0	Superintendent	1	9	VP	0	0

Equipment					
Cont/ Sub #	Equipment ID	Description	# Pieces	# Used	Total Hours Used
1	N/A	Barge	1	1	8
1	CAT 323	Excavator	1	1	5
1	CAT 326	Excavator	1	0	0
1	02016	Front End Loader	1	0	0
1	FL6223TB	Push Boat	1	1	4
1	FL2474PP	Support Boat	1	0	0
1	N6143X	Fuel Truck	1	0	0
1	P9457E	Water Truck	1	0	0
1	725RZM	Water Tank	1	0	0
1	Z67EAZ	Dump truck	1	0	0
1	MB38DQ	Utility Truck	1	0	0
1	5178CR	Transport Truck	1	0	0

Visitors			
Name	Company	Hours at Job Site	
		From:	To:

Inspector Name and Position	Hours at Job Site/Office		Total Hours
Sam Boyd, EIT	From: 8:00 AM	To: 4:30 PM	8.5 hours



☉ 228°SW (T) ● 26°8'13"N, 81°47'16"W ±13ft ▲ 12ft



Collier Seawall and Dock passing by the barge exiting Canal CC-CC



☉ 236°SW (T) ☉ 26°8'13"N, 81°47'16"W ±22ft ▲ 8ft



323 excavator grinding rock at station 0+50

S SW W
150 180 210 240 270
☉ 213°SW (T) ☉ 26°8'13"N, 81°47'16"W ±13ft ▲ 7ft



323 excavator lifting spud to allow push boat to move barge from station 1+00 to 0+50

SW W NW
210 240 270 300
☉ 256°W (T) ☉ 26°8'13"N, 81°47'15"W ±91ft ▲ 8ft



15 Dec 2021, 11:41:11

323 excavator on the barge at station 0+50

SW W NW
210 240 270 300 330
☉ 271°W (T) ☉ 26°8'13"N, 81°47'16"W ±13ft ▲ 8ft



323 excavator grinding rock at station 0+50



DAILY REPORT OF CONSTRUCTION
 21-036 EAST NAPLES BAY
 DREDGING AND ROCK REMOVAL PROJECT



Date: 12/16/2021			
Inspectors: SB	Stantec PIN: 2028113191		Accidents <input type="checkbox"/> Yes <input checked="" type="checkbox"/> No
Day of Week: Thursday	Contract Day: 60/365	Week: 9	Accident Report #: N/A
High Temp (°F): 84°F	AM Conditions: Sunny	PM Conditions: Cloudy	High Tide: 12:12 PM – +2.0'
Low Temp (°F): 68°F	Wind: 7 mph	Wind: 7 mph	Low Tide: 5:31 PM – +1.2'
Canal Worked In: CC-CC	Stations Worked Between:	0+00 to 1+50	

General
<p>#1 – Prime Contractor – Quality Enterprises:</p> <ul style="list-style-type: none"> Contractor’s equipment is staged in canal CC-CC at station 0+50; this equipment includes an excavator mounted on the barge. The contractor also had a hopper and a push boat staged in Canal CC-CC at station 1+50. Contractor also has a long-reach excavator, a water tank, and two fuel cubes staged on the property located at 1300 Curlew Avenue, Naples, FL, 34102. Contractor installed turbidity curtain across the mouth of Canal CC-CC. Contractor used push boat to transport hopper from station 1+50 to station 0+50. Contractor used 323 excavator to check bottom elevations and remove material from stations 0+00 to 0+50. 1 hopper of material was transferred to the hopper. Turbidity curtain broke and contractor had to reattach it (5 sections of curtains tied together). Contractor removed 1 hopper of material from the hopper and transferred it to the dewatering site at 1300 Curlew Avenue. Contractor used 323 excavator to check bottom elevations and remove material from stations 0+00 to 1+00. 1 hopper of material was transferred to the hopper. Contractor redistributed material on the dewatering site to make room for more material being removed from Canal CC-CC. Contractor removed 1 hopper of material from the hopper and transferred it to the dewatering site at 1300 Curlew Avenue (2 hoppers of material transferred to dewatering site today). Push boat was used to move barge, 323 excavator, and hopper as necessary for removing material. Contractor left the barge, 323 excavator, push boat, and hopper between stations 1+00 and 1+50 with the turbidity curtain still surrounding the barge.

Contractor(s) and Personnel										
#	Name	Type	#	Hrs.	Type	#	Hrs.	Type	#	Hrs.
1	Prime: Quality Enterprises	PM	0	0	Boat Captain	1	9	Foreman	0	0
		Excavator Operator	1	9	Truck Driver	0	0	Assistant	1	9
		Technician	0	0	Superintendent	1	9	VP	0	0

Equipment					
Cont/ Sub #	Equipment ID	Description	# Pieces	# Used	Total Hours Used
1	N/A	Barge	1	1	9
1	CAT 323	Excavator	1	1	8
1	CAT 326	Excavator	1	1	3
1	02016	Front End Loader	1	0	0
1	FL6223TB	Push Boat	1	1	5
1	FL2474PP	Support Boat	1	0	0
1	N6143X	Fuel Truck	1	0	0
1	P9457E	Water Truck	1	0	0
1	725RZM	Water Tank	1	0	0
1	Z67EAZ	Dump truck	1	0	0
1	MB38DQ	Utility Truck	1	0	0
1	5178CR	Transport Truck	1	0	0

Visitors			
Name	Company	Hours at Job Site	
		From:	To:

Inspector Name and Position	Hours at Job Site/Office		Total Hours
Sam Boyd, EIT	From: 8:15 AM	To: 4:45 PM	8.5 hours



323 excavator lifting spud to allow push boat to move barge at station 0+00

S 180 SW 210 240 W 270 300 N
☀ 241°SW (T) ☉ 26°8'13"N, 81°47'16"W ±13ft ▲ 11ft



16 Dec 2021, 08:56:25

323 excavator removing material from station 0+00

S 180 210 SW 240 W 270 300
☉ 232°SW (T) ☉ 26°8'13"N, 81°47'16"W ±22ft ▲ 8ft



16 Dec 2021 09:16:13

323 excavator removing material from station 0+00 and transferring it to hopper

S 180 SW 210 40 W 270 300
☉ 238°SW (T) ☉ 26°8'13"N, 81°47'16"W ±36ft ▲ 9ft



323 excavator removing material from station 0+00 and transferring it to hopper



Hopper after 326 excavator has removed most of the material



☀ 164°S (T) ● 26°8'14"N, 81°47'16"W ±13ft ▲ 8ft



326 excavator transferring material from hopper to dewatering site at 1300 Curlew Avenue

S 180 SW 210 W 240 270
☀ 226°SW (T) ☉ 26°8'13"N, 81°47'16"W ±22ft ▲ 8ft



16 Dec 2021, 13:42:01

323 excavator removing material from station 0+50 and transferring it to hopper

E 90 SE 120 150 S 180
☀ 133°SE (T) ☉ 26°8'13"N, 81°47'16"W ±19ft ▲ 8ft



326 excavator transferring material from hopper to dewatering site at 1300 Curlew Avenue



☀ 92°E (T) ☉ 26°8'13"N, 81°47'16"W ±16ft ▲ 8ft



326 excavator transferring material from hopper to dewatering site at 1300 Curlew Avenue

E SE S
60 90 120 150 180
☉ 129°SE (T) ☉ 26°8'13"N, 81°47'16"W ±29ft ▲ 8ft



326 excavator transferring material from hopper to dewatering site at 1300 Curlew Avenue



DAILY REPORT OF CONSTRUCTION
 21-036 EAST NAPLES BAY
 DREDGING AND ROCK REMOVAL PROJECT



Date: 12/17/2021			
Inspectors: SB	Stantec PIN: 2028113191	Accidents <input type="checkbox"/> Yes <input checked="" type="checkbox"/> No	
Day of Week: Friday	Contract Day: 61/365	Week: 9	Accident Report #: N/A
High Temp (°F): 86°F	AM Conditions: Sunny	PM Conditions: Sunny	High Tide: 12:44 PM – +2.0'
Low Temp (°F): 66°F	Wind: 5 mph	Wind: 8 mph	Low Tide: 6:08 PM – +1.2'
Canal Worked In: CC-CC	Stations Worked Between:	1+00 to 3+50	

General	
#1 – Prime Contractor – Quality Enterprises:	
<ul style="list-style-type: none"> Contractor’s equipment is staged in canal CC-CC at station 1+00; this equipment includes an excavator mounted on the barge. The contractor also had a hopper and a push boat staged in Canal CC-CC at station 1+50. Contractor also has a long-reach excavator, a water tank, and two fuel cubes staged on the property located at 1300 Curlew Avenue, Naples, FL, 34102. Contractor installed turbidity curtain across the mouth of Canal CC-CC. Contractor used push boat and GPS rover to check bottom elevations down all of Canal CC-CC. Contractor used 323 excavator to check bottom elevations and remove material from stations 1+00 to 1+50. Contractor switched to the shallow bucket attachment for 323 excavator. Contractor used 323 excavator to check bottom elevations and remove material from station 3+50 to 3+00. Contractor used 326 excavator to transfer one hopper of material to the dewatering site at 1300 Curlew Avenue. Push boat was used to move barge, 323 excavator, and hopper as necessary for removing material. Contractor used fire hydrant outside of 1300 Curlew Avenue to fill the water tank. Contractor used water tank to clean all equipment. Contractor left the barge, 323 excavator, push boat, and hopper between stations 1+00 and 1+50 for the weekend. 	

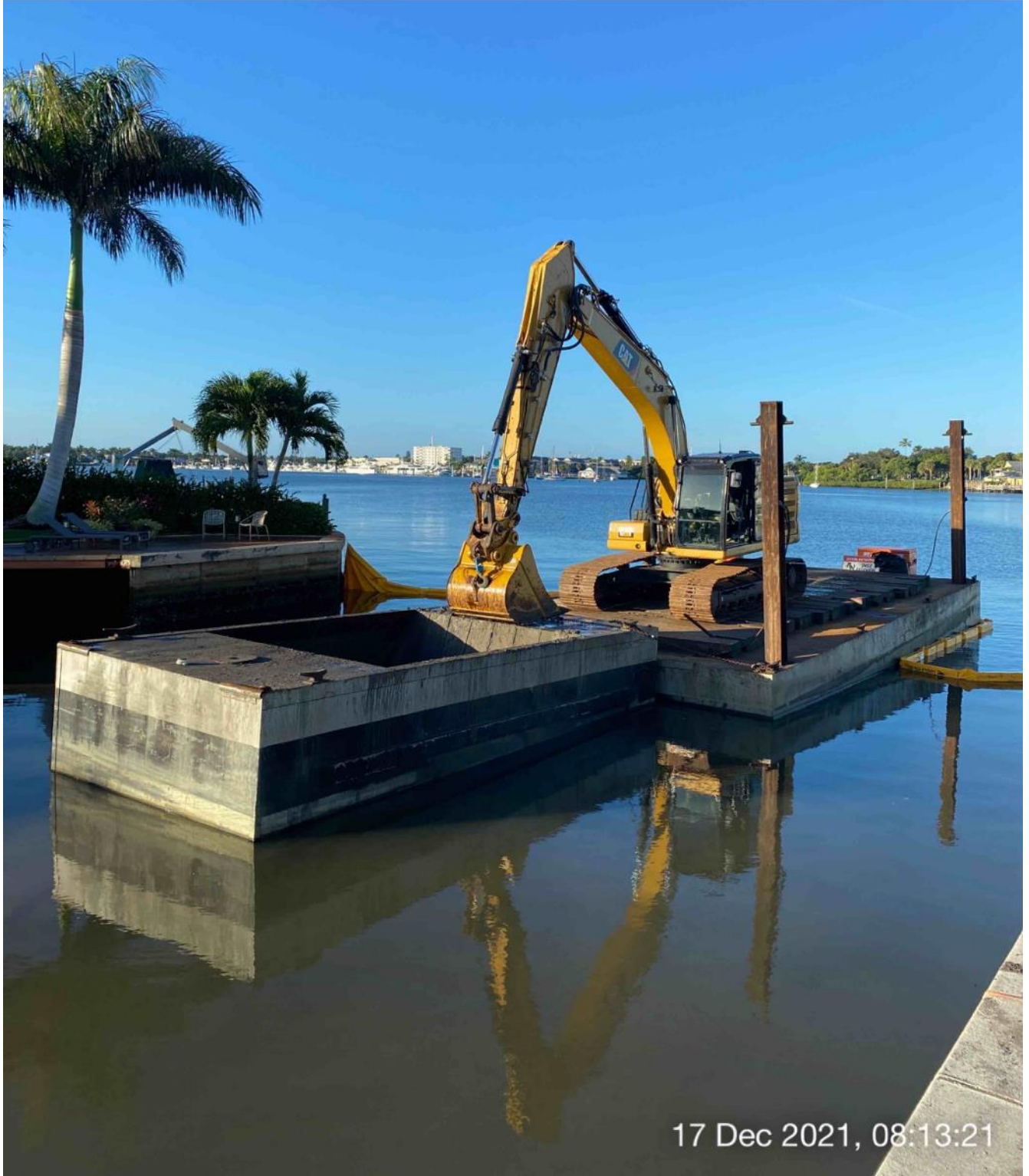
Contractor(s) and Personnel										
#	Name	Type	#	Hrs.	Type	#	Hrs.	Type	#	Hrs.
1	Prime: Quality Enterprises	PM	0	0	Boat Captain	1	9	Foreman	0	0
		Excavator Operator	1	9	Truck Driver	0	0	Assistant	1	9
		Technician	0	0	Superintendent	1	9	VP	0	0

Equipment					
Cont/ Sub #	Equipment ID	Description	# Pieces	# Used	Total Hours Used
1	N/A	Barge	1	1	9
1	CAT 323	Excavator	1	1	8
1	CAT 326	Excavator	1	1	2
1	02016	Front End Loader	1	0	0
1	FL6223TB	Push Boat	1	1	5
1	FL2474PP	Support Boat	1	0	0
1	N6143X	Fuel Truck	1	0	0
1	P9457E	Water Truck	1	0	0
1	725RZM	Water Tank	1	1	1
1	Z67EAZ	Dump truck	1	0	0
1	MB38DQ	Utility Truck	1	0	0
1	5178CR	Transport Truck	1	0	0

Visitors			
Name	Company	Hours at Job Site	
		From:	To:
Al Reynolds	Stantec	3:15 pm	3:30 pm

Inspector Name and Position	Hours at Job Site/Office		Total Hours
Sam Boyd, EIT	From: 8:00 AM	To: 4:45 PM	8.75 hours

S 180 SW 210 240 W 270 300 NW
☉ 249°W (T) ☉ 26°8'13"N, 81°47'16"W ±13ft ▲ 11ft





Removed material at the dewatering site at 1300 Curlew Avenue

S

180

SW

210

240

W

270

☉ 226°SW (T) ☉ 26°8'13"N, 81°47'16"W ±13ft ▲ 9ft



323 excavator removing material from station 1+00 and transferring it to hopper

E SE S
60 90 120 150 180
☀ 122°SE (T) ☉ 26°8'13"N, 81°47'14"W ±22ft ▲ 8ft



323 excavator removing material from station 3+50 and transferring it to hopper

NE 60 E 90 SE 120 150 S 180
☉ 114°SE (T) ☉ 26°8'13"N, 81°47'14"W ±59ft ▲ 8ft



17 Dec 2021 11:19:55

323 excavator lifting spud to allow push boat to move barge from station 3+50 to 3+00

SE S SW
120 150 180 210 240

☀ 179°S (T) ☉ 26°8'14"N, 81°47'16"W ±26ft ▲ 9ft



326 excavator transferring material from hopper to dewatering site at 1300 Curlew Avenue