



# WEEKLY SUMMARY REPORT – CONTRACT WEEK 08

21-036 EAST NAPLES BAY

## DREDGING AND ROCK REMOVAL PROJECT



Date: <b>12/6/2021 to 12/10/2021</b>			
Inspectors: <b>Sam Boyd</b>	Stantec PIN: <b>2028113191</b>		Accidents <input type="checkbox"/> Yes <input checked="" type="checkbox"/> No
Days of Week: <b>Monday to Friday</b>	Contract Days: <b>50 to 54</b>	Total Days: <b>365</b>	Accident Report #: <b>N/A</b>
Canal(s) Worked In: <b>CC-CC</b>	Stations Worked Between: <b>2+00 to 10+00</b>		

### General

#### Remarks

#### #1 – Prime Contractor – Quality Enterprises:

##### Monday 12-06-2021:

- Contractor’s equipment is staged in canal CC-CC between stations 10+00 and 11+00. This equipment includes an excavator mounted on the barge. Contractor also has a long-reach excavator, a hopper, a support boat, a water tank, and two fuel cubes staged on the property located at 1300 Curlew Avenue, Naples, FL, 34102.
- Contractor installed turbidity curtain across the mouth of the Canal CC-CC.
- Contractor removed 1 hopper of material with 323 excavator between stations 9+50 and 10+00.
- Push boat was used to move hopper to station 1+50.
- 326 excavator was used to transfer 1 hopper of material from the hopper to the dewatering site at 1300 Curlew Avenue.
- Contractor removed and then reinstalled the turbidity curtain so that Collier Seawall and Dock barge could enter Canal CC-CC.
- Contractor removed material with 323 excavator between stations 9+00 and 9+50.
- Contractor switched from bucket to Epiroc grinder attached to 323 excavator and grinded rock between stations 9+00 and 9+50.
- Contractor switched back to bucket attachment and removed material and checked depths between stations 9+00 and 7+00.
- Contractor removed and then reinstalled the turbidity curtain so that Collier Seawall and Dock barge could exit Canal CC-CC.
- Contractor removed material and checked depths with 323 excavator between stations 7+00 and 5+00.
- Push boat was used to move barge and 323 excavator as necessary for grinding and removing material.

##### Tuesday 12-07-2021:

- Contractor’s equipment is staged in canal CC-CC at station 5+00; this equipment includes an excavator mounted on the barge. Contractor also has a long-reach excavator, a hopper, a support boat, a water tank, and two fuel cubes staged on the property located at 1300 Curlew Avenue, Naples, FL, 34102.
- Contractor installed turbidity curtain across the mouth of the Canal CC-CC.
- Contractor lifted the push boat up with the 326 excavator so that the technicians could inspect the boat’s engines. The support boat was also used for contractor to access the boat motors.



## WEEKLY SUMMARY REPORT – CONTRACT WEEK 08

21-036 EAST NAPLES BAY

### DREDGING AND ROCK REMOVAL PROJECT



- Contractor changed the oil on each of the push boat's motors (Suzuki 175 HP outboard motor).
- Push boat was used to transport 323 excavator and barge from station 5+00 to station 8+00.
- Contractor grinded rock between stations 8+00 and 8+50.
- Push boat was used to move barge and 323 excavator as necessary for grinding and removing material.

#### Wednesday 12-08-2021:

- Contractor's equipment is staged in canal CC-CC at station 8+50; this equipment includes an excavator mounted on the barge. Contractor also has a long-reach excavator, a hopper, a support boat, a water tank, and two fuel cubes staged on the property located at 1300 Curlew Avenue, Naples, FL, 34102.
- Contractor installed turbidity curtain across the mouth of the Canal CC-CC.
- Contractor used 323 excavator to grind rock between stations 8+50 and 9+00 from 8:00 am to 12:00 pm.
- At 12:00 pm a transport truck brought the front end loader to 1300 Curlew Avenue.
- Contractor used 323 excavator to grind rock between stations 8+50 and 9+00 from 1:00 pm to 4:30 pm.
- Push boat was used to move barge and 323 excavator as necessary for grinding material.

#### Thursday 12-09-2021:

- Contractor's equipment is staged in canal CC-CC at station 8+50; this equipment includes an excavator mounted on the barge. Contractor also has a long-reach excavator, a hopper, a support boat, a water tank, and two fuel cubes staged on the property located at 1300 Curlew Avenue, Naples, FL, 34102.
- Contractor installed turbidity curtain across the mouth of the Canal CC-CC.
- Push boat transported barge to station 8+50 where the barge and 323 excavator were stationed.
- Contractor used 323 excavator to grind rock between stations 8+00 and 8+50 from 8:30 am to 11:00 am.
- Contractor switched the attachment on 323 excavator from the Epiroc grinder to the bucket.
- Contractor removed material between stations 8+50 and 9+00 and transferred material to hopper.
- Contractor used 323 excavator with the bucket to check bottom elevations and removed material between stations 8+50 and 9+00 and transferred material to hopper.
- Push boat transported full hopper to station 1+50.
- Contractor used 326 excavator to transfer 1 hopper of material to the dewatering site at 1300 Curlew Avenue
- Contractor used 323 excavator with the bucket to check bottom elevations and removed material between stations 8+50 and 4+00 and transferred material to hopper.
- Push boat was used to move barge and 323 excavator as necessary for removing material.

#### Friday 12-10-2021:

- Contractor's equipment is staged in canal CC-CC at station 4+00; this equipment includes an excavator mounted on the barge. Contractor also has a long-reach excavator, a hopper, a support boat, a water tank, and two fuel cubes staged on the property located at 1300 Curlew Avenue, Naples, FL, 34102.



**WEEKLY SUMMARY REPORT – CONTRACT WEEK 08**  
**21-036 EAST NAPLES BAY**  
**DREDGING AND ROCK REMOVAL PROJECT**



- Contractor installed turbidity curtain across the mouth of the Canal CC-CC.
- Contractor used 323 excavator with the bucket to check bottom elevations and removed material between stations 3+50 and 4+00 and transferred material to hopper.
- Contractor used 326 excavator to transfer 1 hopper of material to the dewatering site at 1300 Curlew Avenue.
- Contractor used 323 excavator with the bucket to check bottom elevations and removed material between stations 2+50 and 3+50 and transferred material to hopper.
- Contractor used 326 excavator to transfer 1 hopper of material to the dewatering site at 1300 Curlew Avenue.
- Push boat was used to move barge, 323 excavator, and hopper as necessary for removing material.
- Push boat transported barge to station 2+00 where the barge, 323 excavator, and hopper are stationed for the weekend.
- Contractor filled up water tank with the fire hydrant outside of the lot at 1300 Curlew Avenue.
- Contractor used the water tank to clean equipment.

***Note: Daily reports with pictures attached for the week.***



**DAILY REPORT OF CONSTRUCTION**  
 21-036 EAST NAPLES BAY  
 DREDGING AND ROCK REMOVAL PROJECT



Date: <b>12/06/2021</b>			
Inspectors: <b>SB</b>	Stantec PIN: <b>2028113191</b>		Accidents <input type="checkbox"/> Yes <input checked="" type="checkbox"/> No
Day of Week: <b>Monday</b>	Contract Day: <b>50/365</b>	Week: <b>8</b>	Accident Report #: <b>N/A</b>
High Temp (°F): <b>81°F</b>	AM Conditions: <b>Sunny</b>	PM Conditions: <b>Sunny</b>	High Tide: <b>3:31 PM – +2.2'</b>
Low Temp (°F): <b>64°F</b>	Wind: <b>1 mph</b>	Wind: <b>6 mph</b>	Low Tide: <b>8:39 AM – -0.9'</b>
Canal Worked In: <b>CC-CC</b>	Stations Worked Between:	<b>5+00 to 10+00</b>	

<b>General</b>
<p><b>#1 – Prime Contractor – Quality Enterprises:</b></p> <ul style="list-style-type: none"> <li>Contractor’s equipment is staged in canal CC-CC between stations 10+00 and 11+00. This equipment includes an excavator mounted on the barge. Contractor also has a long-reach excavator, a hopper, a support boat, a water tank, and two fuel cubes staged on the property located at 1300 Curlew Avenue, Naples, FL, 34102.</li> <li>Contractor installed turbidity curtain across the mouth of the Canal CC-CC.</li> <li>Contractor removed 1 hopper of material with 323 excavator between stations 9+50 and 10+00.</li> <li>Push boat was used to move hopper to station 1+50.</li> <li>326 excavator was used to transfer 1 hopper of material from the hopper to the dewatering site at 1300 Curlew Avenue.</li> <li>Contractor removed and then reinstalled the turbidity curtain so that Collier Seawall and Dock barge could enter Canal CC-CC.</li> <li>Contractor removed material with 323 excavator between stations 9+00 and 9+50.</li> <li>Contractor switched from bucket to Epiroc grinder attached to 323 excavator and grinded rock between stations 9+00 and 9+50.</li> <li>Contractor switched back to bucket attachment and removed material and checked depths between stations 9+00 and 7+00.</li> <li>Contractor removed and then reinstalled the turbidity curtain so that Collier Seawall and Dock barge could exit Canal CC-CC.</li> <li>Contractor removed material and checked depths with 323 excavator between stations 7+00 and 5+00.</li> <li>Push boat was used to move barge and 323 excavator as necessary for grinding and removing material.</li> </ul>

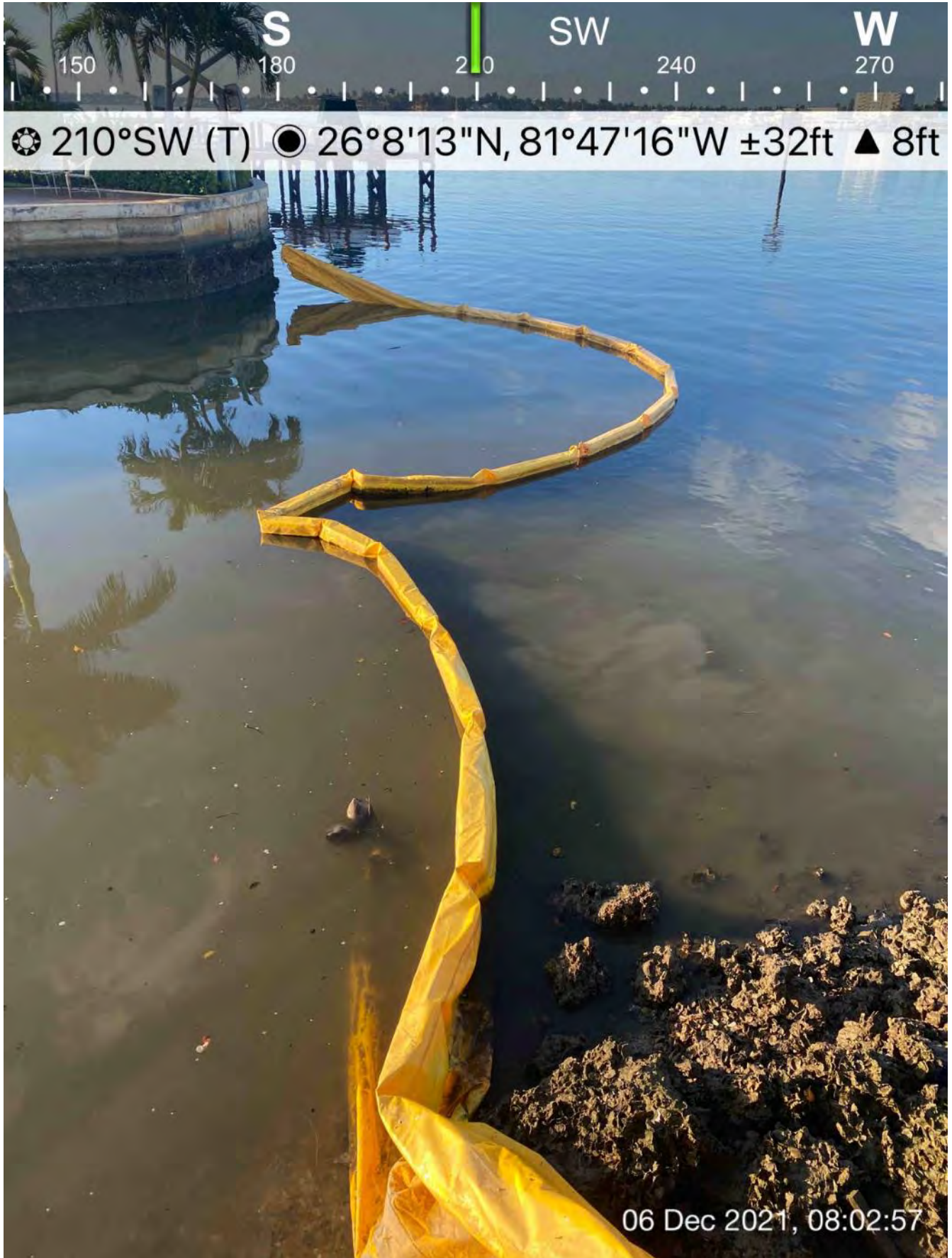
<b>Contractor(s) and Personnel</b>										
#	Name	Type	#	Hrs.	Type	#	Hrs.	Type	#	Hrs.
1	Prime: <b>Quality Enterprises</b>	PM	0	0	Boat Captain	1	9	Foreman	0	0
		Excavator Operator	1	9	Truck Driver	0	0	Assistant	1	9
		Technician	0	0	Superintendent	1	9	VP	0	0

<b>Equipment</b>					
Cont/ Sub #	Equipment ID	Description	# Pieces	# Used	Total Hours Used
1	N/A	Barge	1	1	8
1	CAT 323	Excavator	1	1	8
1	CAT 326	Excavator	1	0	2
1	02016	Front End Loader	1	0	0
1	FL6223TB	Push Boat	1	1	9
1	FL2474PP	Support Boat	1	0	0
1	N6143X	Fuel Truck	1	0	0
1	P9457E	Water Truck	1	0	0
1	725RZM	Water Tank	1	0	0
1	Z67EAZ	Dump truck	1	0	0
1	MB38DQ	Utility Truck	1	0	0
1	5178CR	Transport Truck	1	0	0

<b>Visitors</b>			
Name	Company	Hours at Job Site	
		From:	To:

Inspector Name and Position	Hours at Job Site/Office		Total Hours
Sam Boyd, EIT	From: 8:00 AM	To: 5:00 PM	9.0 hours





Turbidity Curtain across the mouth of Canal CC-CC





☀ 185°S (T) ● 26°8'14"N, 81°47'15"W ±29ft ▲ 8ft



06 Dec 2021, 08:07:29

Removed material at dewatering site at 1300 Curlew Avenue



E 150 S 180 210 SW 240 W 270  
☀ 206°SW (T) ☉ 26°8'14"N, 81°47'15"W ±16ft ▲ 9ft



326 excavator transferring material from hopper to dewatering site



S 180 SW 210 W 270  
50 180 210 240 270  
☉ 220°SW (T) ☉ 26°8'13"N, 81°47'15"W ±13ft ▲ 8ft



326 excavator transferring material from hopper to dewatering site



S 180 SW 210 240 W 270 300  
☀ 239°SW (T) ☉ 26°8'13"N, 81°47'16"W ±13ft ▲ 8ft



06 Dec 2021, 10:38:47

Collier Seawall and dock entering Canal CC-CC



TRACTOR CAT  
E SE S  
60 90 120 150 180  
☀ 119°SE (T) ☉ 26°8'13"N, 81°47'16"W ±45ft ▲ 8ft



Collier Seawall and dock entering Canal CC-CC





☀ 165°S (T) ☉ 26°8'13"N, 81°47'16"W ±16ft ▲ 7ft



06 Dec 2021, 11:32:51

**Turbidity Curtain across the mouth of Canal CC-CC**





☀ 142°SE (T) ● 26°8'13"N, 81°47'8"W ±13ft ▲ 8ft



323 excavator removing material from station 9+50



S 180 SW 210 240 W 270 300

☉ 231°SW (T) ☉ 26°8'13"N, 81°47'8"W ±16ft ▲ 8ft



323 excavator lifting spud to allow push boat to move the barge



SE S SW  
120 150 180 210 240

☀ 186°S (T) ☉ 26°8'13"N, 81°47'8"W ±29ft ▲ 9ft



**323 excavator with Epiroc grinder attachment**





☀ 173°S (T) ☉ 26°8'13"N, 81°47'8"W ±39ft ▲ 9ft



323 excavator with Epiroc grinder attachment grinding rock at station 9+00



E S SW W  
150 180 210 240 270  
☀ 209°SW (T) ● 26°8'13"N, 81°47'8"W ±22ft ▲ 8ft



Removing Epiroc grinder attachment



**DAILY REPORT OF CONSTRUCTION**  
 21-036 EAST NAPLES BAY  
 DREDGING AND ROCK REMOVAL PROJECT



Date: <b>12/07/2021</b>			
Inspectors: <b>SB</b>	Stantec PIN: <b>2028113191</b>		Accidents <input type="checkbox"/> Yes <input checked="" type="checkbox"/> No
Day of Week: <b>Tuesday</b>	Contract Day: <b>51/365</b>	Week: <b>8</b>	Accident Report #: <b>N/A</b>
High Temp (°F): <b>82°F</b>	AM Conditions: <b>Sunny</b>	PM Conditions: <b>Sunny</b>	High Tide: <b>4:26 PM – +2.2'</b>
Low Temp (°F): <b>62°F</b>	Wind: <b>5 mph</b>	Wind: <b>6 mph</b>	Low Tide: <b>9:30 AM – -0.7'</b>
Canal Worked In: <b>CC-CC</b>	Stations Worked Between:	<b>8+50 to 9+00</b>	

<b>General</b>
<p><b>#1 – Prime Contractor – Quality Enterprises:</b></p> <ul style="list-style-type: none"> <li>• Contractor’s equipment is staged in canal CC-CC at station 5+00; this equipment includes an excavator mounted on the barge. Contractor also has a long-reach excavator, a hopper, a support boat, a water tank, and two fuel cubes staged on the property located at 1300 Curlew Avenue, Naples, FL, 34102.</li> <li>• Contractor installed turbidity curtain across the mouth of the Canal CC-CC.</li> <li>• Contractor lifted the push boat up with the 326 excavator so that the technicians could inspect the boat’s engines. The support boat was also used for contractor to access the boat motors.</li> <li>• Contractor changed the oil on each of the push boat’s motors (Suzuki 175 HP outboard motor).</li> <li>• Push boat was used to transport 323 excavator and barge from station 5+00 to station 8+00.</li> <li>• Contractor grinded rock between stations 8+00 and 8+50.</li> <li>• Push boat was used to move barge and 323 excavator as necessary for grinding and removing material.</li> </ul>



<b>Contractor(s) and Personnel</b>										
#	Name	Type	#	Hrs.	Type	#	Hrs.	Type	#	Hrs.
1	Prime: <b>Quality Enterprises</b>	PM	0	0	Boat Captain	1	9	Foreman	0	0
		Excavator Operator	1	9	Truck Driver	0	0	Assistant	1	9
		Technician	2	2	Superintendent	1	9	VP	0	0

<b>Equipment</b>					
Cont/ Sub #	Equipment ID	Description	# Pieces	# Used	Total Hours Used
1	N/A	Barge	1	1	8
1	CAT 323	Excavator	1	1	8
1	CAT 326	Excavator	1	0	0
1	02016	Front End Loader	1	0	0
1	FL6223TB	Push Boat	1	1	5
1	FL2474PP	Support Boat	1	1	2
1	N6143X	Fuel Truck	1	0	0
1	P9457E	Water Truck	1	0	0
1	725RZM	Water Tank	1	0	0
1	Z67EAZ	Dump truck	1	0	0
1	MB38DQ	Utility Truck	1	1	2
1	5178CR	Transport Truck	1	0	0

<b>Visitors</b>			
Name	Company	Hours at Job Site	
		From:	To:

Inspector Name and Position	Hours at Job Site/Office		Total Hours
Sam Boyd, EIT	From: 9:00 AM	To: 5:00 PM	8.0 hours



326 excavator lifting push boat to allow technician to change the oil on the motors from the support boat



S 180 SW 210 24 W 270 300 N  
☀ 242°SW (T) ☉ 26°8'13"N, 81°47'16"W ±55ft ▲ 8ft



Turbidity Curtain across the mouth of Canal CC-CC

NE E SE  
0 60 90 120 150  
☀ 102°E (T) ☉ 26°8'13"N, 81°47'14"W ±29ft ▲ 8ft



07 Dec 2021, 10:23:03

**323 excavator lifting spud to allow push boat to move barge from station 5+00 to 8+00**







S 180 SW 210 W 270

☉ 225°SW (T) ● 26°8'13"N, 81°47'8"W ±13ft ▲ 8ft



323 excavator grinding rock at station 8+50





**DAILY REPORT OF CONSTRUCTION**  
 21-036 EAST NAPLES BAY  
 DREDGING AND ROCK REMOVAL PROJECT



Date: <b>12/08/2021</b>			
Inspectors: <b>SB</b>	Stantec PIN: <b>2028113191</b>		Accidents <input type="checkbox"/> Yes <input checked="" type="checkbox"/> No
Day of Week: <b>Wednesday</b>	Contract Day: <b>52/365</b>	Week: <b>8</b>	Accident Report #: <b>N/A</b>
High Temp (°F): <b>81°F</b>	AM Conditions: <b>Sunny</b>	PM Conditions: <b>Sunny</b>	High Tide: <b>5:21 PM – +2.1'</b>
Low Temp (°F): <b>62°F</b>	Wind: <b>5 mph</b>	Wind: <b>10 mph</b>	Low Tide: <b>10:22 AM – -0.4'</b>
Canal Worked In: <b>CC-CC</b>	Stations Worked Between:	<b>8+50 to 9+00</b>	

<b>General</b>	
<b>#1 – Prime Contractor – Quality Enterprises:</b>	
<ul style="list-style-type: none"> <li>• Contractor’s equipment is staged in canal CC-CC at station 8+50; this equipment includes an excavator mounted on the barge. Contractor also has a long-reach excavator, a hopper, a support boat, a water tank, and two fuel cubes staged on the property located at 1300 Curlew Avenue, Naples, FL, 34102.</li> <li>• Contractor installed turbidity curtain across the mouth of the Canal CC-CC.</li> <li>• Contractor used 323 excavator to grind rock between stations 8+50 and 9+00 from 8:00 am to 12:00 pm.</li> <li>• At 12:00 pm a transport truck brought the front end loader to 1300 Curlew Avenue.</li> <li>• Contractor used 323 excavator to grind rock between stations 8+50 and 9+00 from 1:00 pm to 4:30 pm.</li> <li>• Push boat was used to move barge and 323 excavator as necessary for grinding material.</li> </ul>	

Contractor(s) and Personnel										
#	Name	Type	#	Hrs.	Type	#	Hrs.	Type	#	Hrs.
1	Prime: <b>Quality Enterprises</b>	PM	0	0	Boat Captain	1	9	Foreman	0	0
		Excavator Operator	1	4	Truck Driver	1	0.5	Assistant	1	9
		Technician	0	0	Superintendent	1	9	VP	0	0

Equipment					
Cont/ Sub #	Equipment ID	Description	# Pieces	# Used	Total Hours Used
1	N/A	Barge	1	1	9
1	CAT 323	Excavator	1	1	9
1	CAT 326	Excavator	1	0	0
1	02016	Front End Loader	1	1	0.25
1	FL6223TB	Push Boat	1	1	2
1	FL2474PP	Support Boat	1	0	0
1	N6143X	Fuel Truck	1	0	0
1	P9457E	Water Truck	1	0	0
1	725RZM	Water Tank	1	0	0
1	Z67EAZ	Dump truck	1	0	0
1	MB38DQ	Utility Truck	1	0	0
1	5178CR	Transport Truck	1	1	0.25

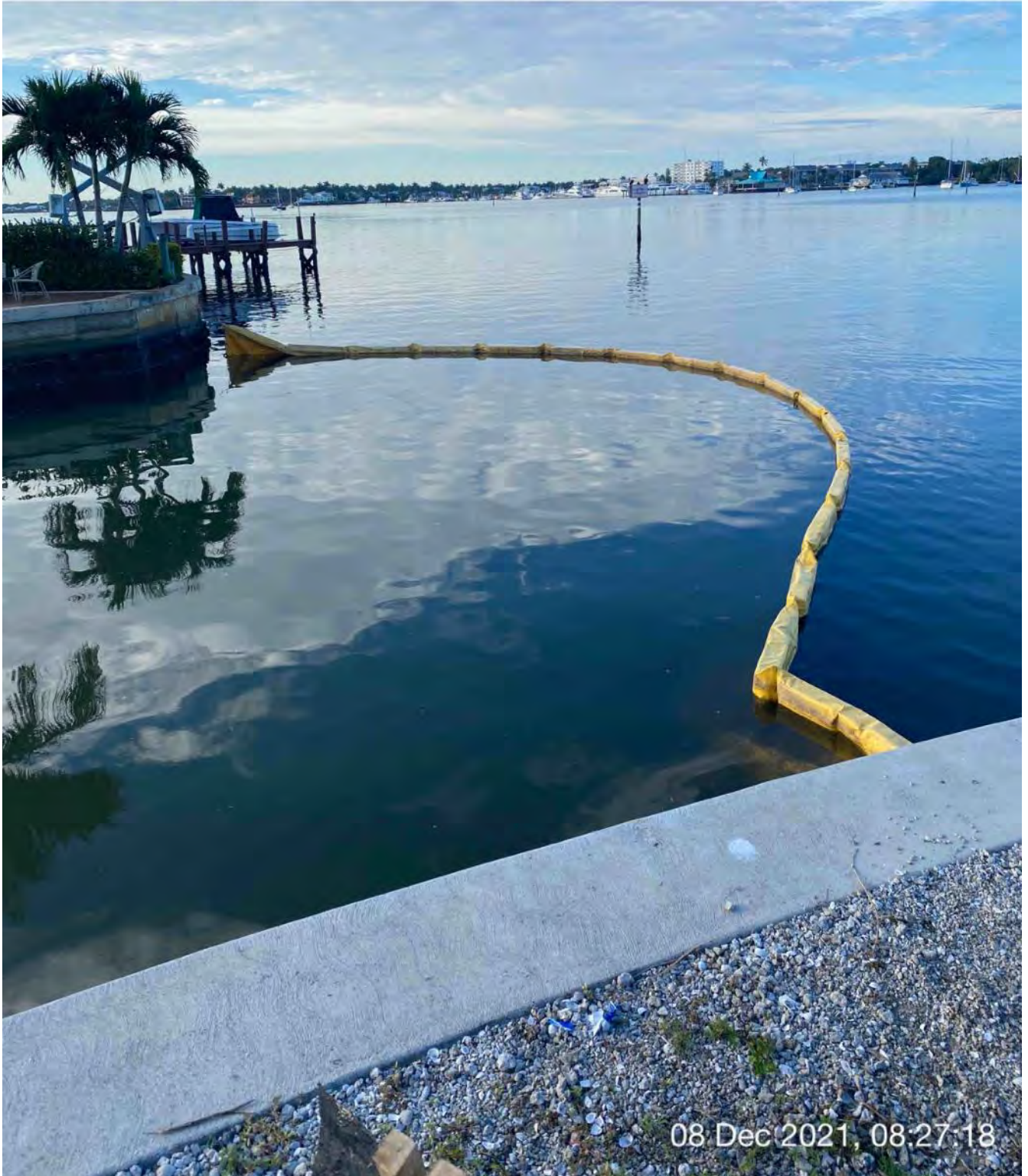
Visitors			
Name	Company	Hours at Job Site	
		From:	To:

Inspector Name and Position	Hours at Job Site/Office		Total Hours
Sam Boyd, EIT	From: 8:15 AM	To: 4:45 PM	8.5 hours



S 180 SW 210 240 W 270 300

☉ 231°SW (T) ● 26°8'13"N, 81°47'16"W ±32ft ▲ 7ft



08 Dec 2021, 08:27:18

Turbidity Curtain across the mouth of Canal CC-CC





☉ 242°SW (T) ☉ 26°8'13"N, 81°47'8"W ±32ft ▲ 8ft



08 Dec 2021, 08:56:41

323 excavator grinding rock at station 8+50



SE 150 S 180 SW 210 W 240 27

☉ 200°S (T) ● 26°8'13"N, 81°47'8"W ±36ft ▲ 8ft



323 excavator grinding rock at station 8+50



E 60 90 120 SE 150 180 S  
☀ 119°SE (T) ☉ 26°8'14"N, 81°47'16"W ±88ft ▲ 8ft



Front end loader at 1300 Curlew Avenue





☉ 208°SW (T) ☉ 26°8'13"N, 81°47'8"W ±45ft ▲ 8ft



323 excavator grinding rock at station 9+00



SE S SW  
120 150 180 210 240  
☀ 182°S (T) ☉ 26°8'13"N, 81°47'8"W ±19ft ▲ 8ft



323 excavator lifting spud to allow push boat to move barge from station 8+50 to 9+00





**DAILY REPORT OF CONSTRUCTION**  
 21-036 EAST NAPLES BAY  
 DREDGING AND ROCK REMOVAL PROJECT



Date: <b>12/09/2021</b>			
Inspectors: <b>SB</b>	Stantec PIN: <b>2028113191</b>		Accidents <input type="checkbox"/> Yes <input checked="" type="checkbox"/> No
Day of Week: <b>Thursday</b>	Contract Day: <b>53/365</b>	Week: <b>8</b>	Accident Report #: <b>N/A</b>
High Temp (°F): <b>81°F</b>	AM Conditions: <b>Foggy</b>	PM Conditions: <b>Sunny</b>	High Tide: <b>6:13 PM – +2.1'</b>
Low Temp (°F): <b>69°F</b>	Wind: <b>1 mph</b>	Wind: <b>7 mph</b>	Low Tide: <b>11:19 AM – -0.1'</b>
Canal Worked In: <b>CC-CC</b>	Stations Worked Between:	<b>4+00 to 8+50</b>	

<b>General</b>	
<b>#1 – Prime Contractor – Quality Enterprises:</b>	
<ul style="list-style-type: none"> <li>Contractor’s equipment is staged in canal CC-CC at station 8+50; this equipment includes an excavator mounted on the barge. Contractor also has a long-reach excavator, a hopper, a support boat, a water tank, and two fuel cubes staged on the property located at 1300 Curlew Avenue, Naples, FL, 34102.</li> <li>Contractor installed turbidity curtain across the mouth of the Canal CC-CC.</li> <li>Push boat transported barge to station 8+50 where the barge and 323 excavator were stationed.</li> <li>Contractor used 323 excavator to grind rock between stations 8+00 and 8+50 from 8:30 am to 11:00 am.</li> <li>Contractor switched the attachment on 323 excavator from the Epiroc grinder to the bucket.</li> <li>Contractor removed material between stations 8+50 and 9+00 and transferred material to hopper.</li> <li>Contractor used 323 excavator with the bucket to check bottom elevations and removed material between stations 8+50 and 9+00 and transferred material to hopper.</li> <li>Push boat transported full hopper to station 1+50.</li> <li>Contractor used 326 excavator to transfer 1 hopper of material to the dewatering site at 1300 Curlew Avenue</li> <li>Contractor used 323 excavator with the bucket to check bottom elevations and removed material between stations 8+50 and 4+00 and transferred material to hopper.</li> <li>Push boat was used to move barge and 323 excavator as necessary for removing material.</li> </ul>	

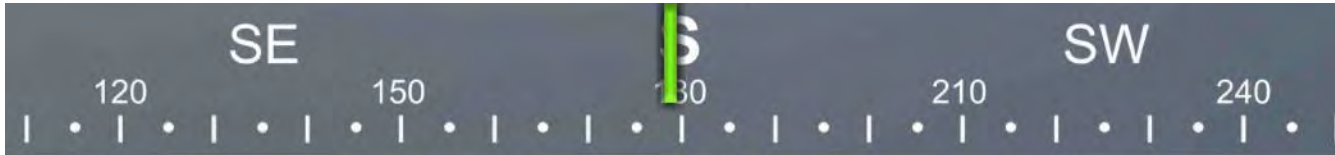
<b>Contractor(s) and Personnel</b>										
#	Name	Type	#	Hrs.	Type	#	Hrs.	Type	#	Hrs.
1	Prime: <b>Quality Enterprises</b>	PM	0	0	Boat Captain	1	9	Foreman	0	0
		Excavator Operator	1	9	Truck Driver	0	0	Assistant	1	9
		Technician	0	0	Superintendent	1	9	VP	0	0

<b>Equipment</b>					
Cont/ Sub #	Equipment ID	Description	# Pieces	# Used	Total Hours Used
1	N/A	Barge	1	1	9
1	CAT 323	Excavator	1	1	9
1	CAT 326	Excavator	1	1	2
1	02016	Front End Loader	1	0	0
1	FL6223TB	Push Boat	1	1	6
1	FL2474PP	Support Boat	1	0	0
1	N6143X	Fuel Truck	1	0	0
1	P9457E	Water Truck	1	0	0
1	725RZM	Water Tank	1	0	0
1	Z67EAZ	Dump truck	1	0	0
1	MB38DQ	Utility Truck	1	0	1
1	5178CR	Transport Truck	1	0	0

<b>Visitors</b>			
Name	Company	Hours at Job Site	
		From:	To:

Inspector Name and Position	Hours at Job Site/Office		Total Hours
Sam Boyd, EIT	From: 8:00 AM	To: 5:00 PM	9.0 hours





☀ 179°S (T) ● 26°8'13"N, 81°47'16"W ±13ft ▲ 9ft



09 Dec 2021, 08:19:32

Turbidity Curtain across the mouth of Canal CC-CC





☉ 138°SE (T) ☉ 26°8'13"N, 81°47'16"W ±22ft ▲ 9ft



Push boat transporting hopper from station 1+50 to station 8+50





☀ 198°S (T) ☉ 26°8'13"N, 81°47'8"W ±42ft ▲ 9ft



09 Dec 2021, 08:29:02

323 excavator lifting spud to allow push boat to move barge from station 8+50 to 8+00



E 150 S 180 210 SW 240 W 270

☉ 206°SW (T) ● 26°8'13"N, 81°47'8"W ±22ft ▲ 9ft



323 excavator grinding rock at station 8+50



E 90 SE 120 150 S 180 S 210

☀ 154°SE (T) ● 26°8'13"N, 81°47'8"W ±13ft ▲ 7ft



09 Dec 2021, 13:17:02

323 excavator removing material at station 8+50





☉ 114°SE (T) ☉ 26°8'13"N, 81°47'16"W ±16ft ▲ 8ft



09 Dec 2021 15:11:20

326 excavator transferring material from hopper to dewatering site at 1300 Curlew Avenue



NE E SE  
30 60 90 120 150  
☀ 97°E (T) ☉ 26°8'13"N, 81°47'16"W ±13ft ▲ 10ft



326 excavator transferring material from hopper to dewatering site at 1300 Curlew Avenue



**DAILY REPORT OF CONSTRUCTION**  
 21-036 EAST NAPLES BAY  
 DREDGING AND ROCK REMOVAL PROJECT



Date: <b>12/10/2021</b>			
Inspectors: <b>SB</b>	Stantec PIN: <b>2028113191</b>		Accidents <input type="checkbox"/> Yes <input checked="" type="checkbox"/> No
Day of Week: <b>Friday</b>	Contract Day: <b>54/365</b>	Week: <b>8</b>	Accident Report #: <b>N/A</b>
High Temp (°F): <b>84°F</b>	AM Conditions: <b>Sunny</b>	PM Conditions: <b>Sunny</b>	High Tide: <b>5:21 AM – +2.3'</b>
Low Temp (°F): <b>66°F</b>	Wind: <b>4 mph</b>	Wind: <b>7 mph</b>	Low Tide: <b>12:20 PM – +0.2'</b>
Canal Worked In: <b>CC-CC</b>	Stations Worked Between:	<b>2+50 to 4+00</b>	

General
<p><b>#1 – Prime Contractor – Quality Enterprises:</b></p> <ul style="list-style-type: none"> <li>• Contractor’s equipment is staged in canal CC-CC at station 4+00; this equipment includes an excavator mounted on the barge. Contractor also has a long-reach excavator, a hopper, a support boat, a water tank, and two fuel cubes staged on the property located at 1300 Curlew Avenue, Naples, FL, 34102.</li> <li>• Contractor installed turbidity curtain across the mouth of the Canal CC-CC.</li> <li>• Contractor used 323 excavator with the bucket to check bottom elevations and removed material between stations 3+50 and 4+00 and transferred material to hopper.</li> <li>• Contractor used 326 excavator to transfer 1 hopper of material to the dewatering site at 1300 Curlew Avenue.</li> <li>• Contractor used 323 excavator with the bucket to check bottom elevations and removed material between stations 2+50 and 3+50 and transferred material to hopper.</li> <li>• Contractor used 326 excavator to transfer 1 hopper of material to the dewatering site at 1300 Curlew Avenue.</li> <li>• Push boat was used to move barge, 323 excavator, and hopper as necessary for removing material.</li> <li>• Push boat transported barge to station 2+00 where the barge, 323 excavator, and hopper are stationed for the weekend.</li> <li>• Contractor filled up water tank with the fire hydrant outside of the lot at 1300 Curlew Avenue.</li> <li>• Contractor used the water tank to clean equipment.</li> </ul>



<b>Contractor(s) and Personnel</b>										
#	Name	Type	#	Hrs.	Type	#	Hrs.	Type	#	Hrs.
1	Prime: <b>Quality Enterprises</b>	PM	0	0	Boat Captain	1	5	Foreman	0	0
		Excavator Operator	1	5	Truck Driver	0	0	Assistant	1	5
		Technician	0	0	Superintendent	1	5	VP	0	0

<b>Equipment</b>					
Cont/ Sub #	Equipment ID	Description	# Pieces	# Used	Total Hours Used
1	N/A	Barge	1	1	5
1	CAT 323	Excavator	1	1	4
1	CAT 326	Excavator	1	1	3
1	02016	Front End Loader	1	0	0
1	FL6223TB	Push Boat	1	1	5
1	FL2474PP	Support Boat	1	0	0
1	N6143X	Fuel Truck	1	0	0
1	P9457E	Water Truck	1	0	0
1	725RZM	Water Tank	1	1	1
1	Z67EAZ	Dump truck	1	0	0
1	MB38DQ	Utility Truck	1	0	0
1	5178CR	Transport Truck	1	0	0

<b>Visitors</b>			
Name	Company	Hours at Job Site	
		From:	To:

Inspector Name and Position	Hours at Job Site/Office		Total Hours
Sam Boyd, EIT	From: 8:00 AM	To: 12:00 PM	4.0 hours

SE S SW  
120 150 180 210 240  
☀ 188°S (T) ☉ 26°8'13"N, 81°47'16"W ±13ft ▲ 8ft



Turbidity Curtain across the mouth of Canal CC-CC



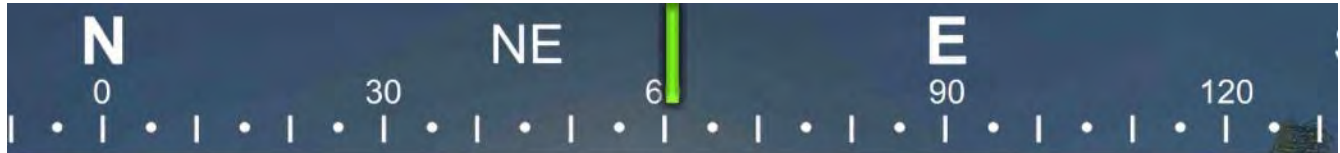


☀ 105°E (T) ● 26°8'13"N, 81°47'14"W ±22ft ▲ 8ft



323 excavator lifting spud to allow push boat to move barge from station 4+00 to 3+50





☉ 167°S (T) ☉ 26°8'13"N, 81°47'14"W ±13ft ▲ 8ft



10 Dec 2021, 08:30:16

323 excavator removing material from station 4+00 and transferring it to hopper





☉ 290°W (T) ● 26°8'13"N, 81°47'15"W ±45ft ▲ 9ft



10 Dec 2021, 08:44:04

Edge of property at 1300 Curlew Avenue



S 180 SW 210 240 W 270 300 NW  
☀ 246°SW (T) ☉ 26°8'13"N, 81°47'15"W ±32ft ▲ 8ft



10 Dec 2021, 08:45:51

Hopper of material at station 1+50



SW W NW  
210 240 270 300 330  
☉ 263°W (T) ☉ 26°8'13"N, 81°47'15"W ±13ft ▲ 8ft



326 excavator transferring material from hopper to dewatering site at 1300 Curlew Avenue



0 W 270 300 NW 330 N 0

☀ 312°NW (T) ● 26°8'13"N, 81°47'15"W ±13ft ▲ 12ft



326 excavator transferring material from hopper to dewatering site at 1300 Curlew Avenue

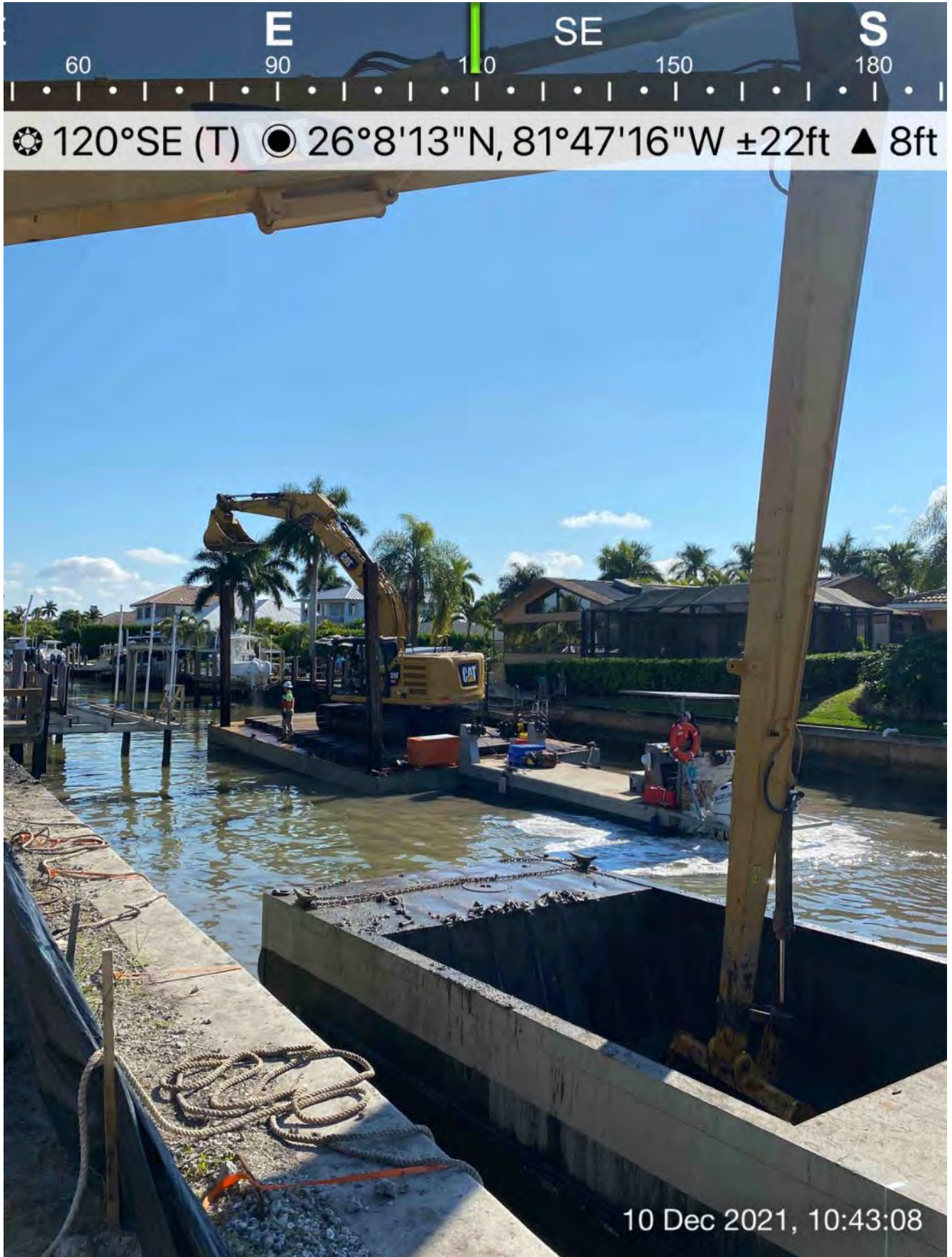


E SE S  
60 90 120 150 180  
☀ 126°SE (T) ☉ 26°8'14"N, 81°47'17"W ±108ft ▲ 8ft



Hopper of material at station 1+50





326 excavator transferring material from hopper to dewatering site at 1300 Curlew Avenue





☀ 179°S (T) ● 26°8'14"N, 81°47'16"W ±49ft ▲ 8ft



Removed material at the dewatering site at 1300 Curlew Avenue