



WEEKLY SUMMARY REPORT – CONTRACT WEEK 05

21-036 EAST NAPLES BAY

DREDGING AND ROCK REMOVAL PROJECT



Date: 11/15/2021 to 11/19/2021			
Inspectors: Sam Boyd	Stantec PIN: 2028113191		Accidents <input type="checkbox"/> Yes <input checked="" type="checkbox"/> No
Days of Week: Monday to Friday	Contract Days: 29 to 33	Total Days: 365	Accident Report #: N/A
Canal(s) Worked In: CC-CC	Stations Worked Between: 1+00 to 4+00		

General

Remarks

#1 – Prime Contractor – Quality Enterprises:

Monday 11-15-2021:

- Contractor’s equipment is staged in canal CC-CC towards the west end of the canal (between stations 1+50 and 2+00). This equipment includes an excavator mounted on the barge, a hopper, and a push boat. Contractor also has a long-reach excavator, a front end loader, two fuel cubes, and a support boat staged on the empty lot property located at 1300 Curlew Avenue, Naples, FL, 34102.
- Contractor installed turbidity curtain across the mouth of Canal CC-CC.
- Contractor removed rock and sediment between stations 2+00 and 2+50 with the 323 excavator mounted on the barge. The push boat was used to position the barge as necessary.
- Contractor placed rock and sediment into the hopper with 323 excavator. Push boat was used to move hopper to station 1+50.
- Contractor used 326 excavator to transfer material from hopper to dewatering site on the southeast side of the empty lot at 1300 Curlew Avenue.
- Contractor replaced the bucket on the 323 excavator with the Epiroc grinder and removed the turbidity curtain.
- Contractor worked on getting internet connection to the 323 excavator from 1:00 pm to 3:00 pm.
- Contractor re-installed turbidity curtain across the mouth of Canal CC-CC.
- Contractor grinded rock with the 323 excavator at station 3+00 from 3:30 pm to 4:00 pm.

Tuesday 11-16-2021:

- Contractor’s equipment is staged in canal CC-CC towards the west end of the canal (between stations 1+50 and 2+00). This equipment includes an excavator mounted on the barge, a hopper, and a push boat. Contractor also has a long-reach excavator, a front end loader, and two fuel cubes staged on the empty lot property located at 1300 Curlew Avenue, Naples, FL, 34102.
- Contractor greased, cleaned, and fixed parts on the 323 excavator from 8:00 am to 12:00 pm.
- 326 excavator lifted small fuel cube onto push boat. Push boat transported fuel cube to the barge. Fuel cube was used to re-fuel the 323 excavator on the barge located at station 2+50.
- Push boat transported fuel cube back to station 1+50. 326 excavator transported fuel cube back to the southeast corner on the empty lot at 1300 Curlew Avenue.
- Contractor refilled small cube with the large fuel cube.
- Contractor installed turbidity curtain across the mouth of Canal CC-CC.



WEEKLY SUMMARY REPORT – CONTRACT WEEK 05

21-036 EAST NAPLES BAY

DREDGING AND ROCK REMOVAL PROJECT



- Contractor checked connection on 323 excavator.
- Contractor moved barge, 323 excavator, and hopper to station 3+50 with push boat.
- Contractor pumped water out of the hopper.
- Contractor removed turbidity curtain.
- Contractor left barge, 323 excavator, and hopper at station 3+50 for the day. Contractor took push boat back to the city dock and left the front end loader, 326 excavator, and two fuel cubes on the empty lot at 1300 Curlew Avenue.

Wednesday 11-17-2021:

- Contractor's equipment is staged in canal CC-CC towards the west end of the canal (between stations 1+50 and 2+00). This equipment includes an excavator mounted on the barge, a hopper, and a push boat. Contractor also has a long-reach excavator, a front end loader, a support boat, and two fuel cubes staged on the empty lot property located at 1300 Curlew Avenue, Naples, FL, 34102.
- Contractor cleaned equipment and fixed parts on the 323 excavator from 9:00 am to 11:00 am.
- Contractor used 326 excavator to redistribute material on the dewatering site at 1300 Curlew Avenue.
- Contractor attached Epiroc grinder to 323 excavator at 2:00 pm.
- Contractor installed turbidity curtain across the mouth of Canal CC-CC.
- Contractor grinded rock between stations 3+50 and 4+00 from 3:30 pm to 4:30 pm.
- Contractor took down the turbidity curtain at 5:00 pm.
- Contractor removed turbidity curtain from across the mouth of Canal CC-CC.
- Contractor left barge, 323 excavator, hopper, and push boat at station 1+50 for the day. Contractor left the front end loader, 326 excavator, and two fuel cubes on the empty lot at 1300 Curlew Avenue.

Thursday 11-18-2021:

- Contractor's equipment is staged in canal CC-CC towards the west end of the canal (between stations 1+50 and 2+00). This equipment includes an excavator mounted on the barge, a hopper, and a push boat. Contractor also has a long-reach excavator, a front end loader, a support boat, and two fuel cubes staged on the empty lot property located at 1300 Curlew Avenue, Naples, FL, 34102.
- Contractor installed tires on the end of the hopper as buffers to prevent impact and damage to equipment.
- Contractor installed a bucket angle sensor on 323 excavator and checked its status to confirm it is working.
- Contractor installed turbidity curtain across the mouth of the Canal CC-CC.
- Push boat was used to moved the barge to station 2+50. 323 excavator grinded rock at station 3+00 from 10:20 am to 11:30 am.
- Push boat was used to move the barge, 323 excavator, and hopper back to station 1+50.
- Contractor grinded rock between stations 2+50 and 3+00 from 1:30 pm to 4:30 pm.
- Contractor removed turbidity curtain from across the mouth of Canal CC-CC.



WEEKLY SUMMARY REPORT – CONTRACT WEEK 05
21-036 EAST NAPLES BAY
DREDGING AND ROCK REMOVAL PROJECT



Friday 11-19-2021:

- Contractor's equipment is staged in canal CC-CC towards the west end of the canal (between stations 1+50 and 2+00). This equipment includes an excavator mounted on the barge, a hopper, and a push boat. Contractor also has a long-reach excavator, a front end loader, a support boat, and two fuel cubes staged on the empty lot property located at 1300 Curlew Avenue, Naples, FL, 34102.
- Contractor installed turbidity curtain across the mouth of the Canal CC-CC.
- Contractor pumped water out of the hopper.
- Contractor grinded rock with 323 excavator between stations 2+50 and 3+00 from 7:30 am to 11:45 am.
- Water truck came to 1300 Curlew Avenue at 10:00 am.
- Contractor came back to 1300 Curlew Avenue with a 10 foot metal fence.
- Contractor grinded rock with 323 excavator between stations 2+00 and 2+50 from 1:15 pm to 3:15 pm.
- Contractor used front end loader to help install the metal fence at the entrance to 1300 Curlew Avenue.
- Push boat used to move barge and 323 excavator back to station 1+50 at 3:30 pm.
- Water truck was used to clean off barge, 323 excavator, hopper, and push boat.

Note: Daily reports with pictures attached for the week.



DAILY REPORT OF CONSTRUCTION
 21-036 EAST NAPLES BAY
 DREDGING AND ROCK REMOVAL PROJECT



Date: 11/15/2021			
Inspectors: SB	Stantec PIN: 2028113191		Accidents <input type="checkbox"/> Yes <input checked="" type="checkbox"/> No
Day of Week: Monday	Contract Day: 29/365	Week: 5	Accident Report #: N/A
High Temp (°F): 74°F	AM Conditions: Sunny	PM Conditions: Sunny	High Tide: 10:48 AM – +2.5'
Low Temp (°F): 57°F	Wind: 7mph	Wind: 10mph	Low Tide: 4:39 PM – +1.5'
Canal Worked In: CC-CC	Stations Worked Between:	1+50 to 2+00	

General

#1 – Prime Contractor – Quality Enterprises:

- Contractor’s equipment is staged in canal CC-CC towards the west end of the canal (between stations 1+50 and 2+00). This equipment includes an excavator mounted on the barge, a hopper, and a push boat. Contractor also has a long-reach excavator, a front end loader, two fuel cubes, and a support boat staged on the empty lot property located at 1300 Curlew Avenue, Naples, FL, 34102.
- Contractor installed turbidity curtain across the mouth of Canal CC-CC.
- Contractor removed rock and sediment between stations 2+00 and 2+50 with the 323 excavator mounted on the barge. The push boat was used to position the barge as necessary.
- Contractor placed rock and sediment into the hopper with 323 excavator. Push boat was used to move hopper to station 1+50.
- Contractor used 326 excavator to transfer material from hopper to dewatering site on the southeast side of the empty lot at 1300 Curlew Avenue.
- Contractor replaced the bucket on the 323 excavator with the Epiroc grinder and removed the turbidity curtain.
- Contractor worked on getting internet connection to the 323 excavator from 1:00 pm to 3:00 pm.
- Contractor re-installed turbidity curtain across the mouth of Canal CC-CC.
- Contractor grinded rock with the 323 excavator at station 3+00 from 3:30 pm to 4:00 pm.

Contractor(s) and Personnel										
#	Name	Type	#	Hrs.	Type	#	Hrs.	Type	#	Hrs.
1	Prime: Quality Enterprises	PM	0	0	Boat Captain	1	9	Foreman	0	0
		Excavator Operator	1	9	Truck Driver	0	0	Assistant	1	9
		Technician	1	2	Superintendent	1	9	VP	0	0

Equipment					
Cont/ Sub #	Equipment ID	Description	# Pieces	# Used	Total Hours Used
1	N/A	Barge	1	1	9
1	CAT 323	Excavator	1	1	6
1	CAT 326	Excavator	1	1	2
1	02016	Front End Loader	1	0	0
1	FL6223TB	Push Boat	1	0	7
1	FL2474PP	Support Boat	1	0	0
1	N6143X	Fuel Truck	1	0	0
1	P9457E	Water Truck	1	0	0
1	Z67EAZ	Dump truck	1	0	0
1	MB38DQ	Utility Truck	1	1	1
1	5178CR	Transport Truck	1	0	0

Visitors			
Name	Company	Hours at Job Site	
		From:	To:

Inspector Name and Position	Hours at Job Site/Office		Total Hours
Sam Boyd, EIT – Inspector	From: 8:00 AM	To: 4:00 PM	8 hours



Turbidity curtain across the mouth of Canal CC-CC

S 180 SW 210 240 W 270 300 N

☉ 243°SW (T) ● 26°8'13"N, 81°47'14"W ±13ft ▲ 9ft



15 Nov 2021, 08:00:49

323 excavator removing material from station 2+50

S 180 SW 210 240 W 270 NW 300
☀ 247°SW (T) ☉ 26°8'13"N, 81°47'14"W ±13ft ▲ 7ft



15 Nov 2021, 08:00:59

323 excavator removing material from station 2+50

E S SW W
150 180 10 240 270
☀ 208°SW (T) ☉ 26°8'13"N, 81°47'15"W ±19ft ▲ 9ft



15 Nov 2021, 08:02:20

323 excavator transferring material from station 2+50 to hopper

SE S SW
120 150 180 210 240

☀ 169°S (T) ● 26°8'13"N, 81°47'15"W ±22ft ▲ 8ft



323 excavator lifting spud to allow push boat to position the barge

S 180 SW 210 240 W 270 NW 300
☉ 247°SW (T) ☉ 26°8'13"N, 81°47'15"W ±13ft ▲ 8ft



326 excavator transferring material from hopper to the dewatering site on the empty lot at 1300 Curlew Avenue



☀ 165°S (T) ● 26°8'13"N, 81°47'15"W ±32ft ▲ 8ft



15 Nov 2021, 11:31:29

323 excavator with Epiroc grinder on barge at station 2+00

SE S SW
120 150 80 210 240
☀ 178°S (T) ☉ 26°8'13"N, 81°47'16"W ±13ft ▲ 7ft



Installing turbidity curtain across the mouth of Canal CC-CC



323 excavator grinding rock at station 3+00

E 90 SE 120 150 S 180 210 SW
☀ 155°SE (T) ● 26°8'14"N, 81°47'15"W ±32ft ▲ 8ft



Dewatering site on the southeast side of the empty lot at 1300 Curlew Avenue



DAILY REPORT OF CONSTRUCTION
 21-036 EAST NAPLES BAY
 DREDGING AND ROCK REMOVAL PROJECT



Date: 11/16/2021			
Inspectors: SB	Stantec PIN: 2028113191	Accidents <input type="checkbox"/> Yes <input checked="" type="checkbox"/> No	
Day of Week: Tuesday	Contract Day: 30/365	Week: 5	Accident Report #: N/A
High Temp (°F): 80°F	AM Conditions: Sunny	PM Conditions: Sunny	High Tide: 11:32 AM – +2.5'
Low Temp (°F): 60°F	Wind: 8mph	Wind: 16mph	Low Tide: 5:19 PM – +1.0'
Canal Worked In: CC-CC	Stations Worked Between:	1+50 to 2+00	

General
<p>#1 – Prime Contractor – Quality Enterprises:</p> <ul style="list-style-type: none"> Contractor’s equipment is staged in canal CC-CC towards the west end of the canal (between stations 1+50 and 2+00). This equipment includes an excavator mounted on the barge, a hopper, and a push boat. Contractor also has a long-reach excavator, a front end loader, and two fuel cubes staged on the empty lot property located at 1300 Curlew Avenue, Naples, FL, 34102. Contractor greased, cleaned, and fixed parts on the 323 excavator from 8:00 am to 12:00 pm. 326 excavator lifted small fuel cube onto push boat. Push boat transported fuel cube to the barge. Fuel cube was used to re-fuel the 323 excavator on the barge located at station 2+50. Push boat transported fuel cube back to station 1+50. 326 excavator transported fuel cube back to the southeast corner on the empty lot at 1300 Curlew Avenue. Contractor refilled small cube with the large fuel cube. Contractor installed turbidity curtain across the mouth of Canal CC-CC. Contractor checked connection on 323 excavator. Contractor moved barge, 323 excavator, and hopper to station 3+50 with push boat. Contractor pumped water out of the hopper. Contractor removed turbidity curtain. Contractor left barge, 323 excavator, and hopper at station 3+50 for the day. Contractor took push boat back to the city dock and left the front end loader, 326 excavator, and two fuel cubes on the empty lot at 1300 Curlew Avenue.

Contractor(s) and Personnel										
#	Name	Type	#	Hrs.	Type	#	Hrs.	Type	#	Hrs.
1	Prime: Quality Enterprises	PM	0	0	Boat Captain	1	9	Foreman	0	0
		Excavator Operator	1	9	Truck Driver	0	0	Assistant	1	9
		Technician	1	7	Superintendent	1	9	VP	0	0

Equipment					
Cont/ Sub #	Equipment ID	Description	# Pieces	# Used	Total Hours Used
1	N/A	Barge	1	1	4
1	CAT 323	Excavator	1	1	4
1	CAT 326	Excavator	1	1	1
1	02016	Front End Loader	1	0	0
1	FL6223TB	Push Boat	1	0	2
1	FL2474PP	Support Boat	1	0	0
1	N6143X	Fuel Truck	1	0	0
1	P9457E	Water Truck	1	0	0
1	Z67EAZ	Dump truck	1	0	0
1	MB38DQ	Utility Truck	1	1	7
1	5178CR	Transport Truck	1	0	0

Visitors			
Name	Company	Hours at Job Site	
		From:	To:

Inspector Name and Position	Hours at Job Site/Office		Total Hours
Sam Boyd, EIT – Inspector	From: 8:00 AM	To: 4:00 PM	8 hours



☀ 173°S (T) ☉ 26°8'13"N, 81°47'16"W ±39ft ▲ 8ft



323 excavator, utility truck, and dewatering site at 1300 Curlew Avenue

NE E SE
30 60 90 120 150
☀ 96°E (T) ☉ 26°8'13"N, 81°47'16"W ±26ft ▲ 8ft



Fixing, greasing, and cleaning parts on the 323 excavator

NE 60 E 90 120 SE 150 S 180
☀ 115°SE (T) ☉ 26°8'13"N, 81°47'16"W ±13ft ▲ 7ft



16 Nov 2021, 13:59:08

Refilling 323 excavator with fuel from small fuel cube



326 excavator transporting small fuel cube from push boat back to the southeast corner of 1300 Curlew Avenue



DAILY REPORT OF CONSTRUCTION
 21-036 EAST NAPLES BAY
 DREDGING AND ROCK REMOVAL PROJECT



Date: 11/17/2021			
Inspectors: SB	Stantec PIN: 2028113191		Accidents <input type="checkbox"/> Yes <input checked="" type="checkbox"/> No
Day of Week: Wednesday	Contract Day: 31/365	Week: 5	Accident Report #: N/A
High Temp (°F): 81°F	AM Conditions: Sunny	PM Conditions: Cloudy	High Tide: 12:08 PM – +2.5'
Low Temp (°F): 64°F	Wind: 10mph	Wind: 10mph	Low Tide: 5:57 PM – +1.1'
Canal Worked In: CC-CC	Stations Worked Between:	1+50 to 4+00	

General

#1 – Prime Contractor – Quality Enterprises:

- Contractor’s equipment is staged in canal CC-CC towards the west end of the canal (between stations 1+50 and 2+00). This equipment includes an excavator mounted on the barge, a hopper, and a push boat. Contractor also has a long-reach excavator, a front end loader, a support boat, and two fuel cubes staged on the empty lot property located at 1300 Curlew Avenue, Naples, FL, 34102.
- Contractor cleaned equipment and fixed parts on the 323 excavator from 9:00 am to 11:00 am.
- Contractor used 326 excavator to redistribute material on the dewatering site at 1300 Curlew Avenue.
- Contractor attached Epiroc grinder to 323 excavator at 2:00 pm.
- Contractor installed turbidity curtain across the mouth of Canal CC-CC.
- Contractor grinded rock between stations 3+50 and 4+00 from 3:30 pm to 4:30 pm.
- Contractor took down the turbidity curtain at 5:00 pm.
- Contractor removed turbidity curtain from across the mouth of Canal CC-CC.
- Contractor left barge, 323 excavator, hopper, and push boat at station 1+50 for the day. Contractor left the front end loader, 326 excavator, and two fuel cubes on the empty lot at 1300 Curlew Avenue.

Contractor(s) and Personnel										
#	Name	Type	#	Hrs.	Type	#	Hrs.	Type	#	Hrs.
1	Prime: Quality Enterprises	PM	0	0	Boat Captain	1	9	Foreman	0	0
		Excavator Operator	1	4.5	Truck Driver	0	0	Assistant	1	9
		Technician	0	0	Superintendent	1	9	VP	0	0

Equipment					
Cont/ Sub #	Equipment ID	Description	# Pieces	# Used	Total Hours Used
1	N/A	Barge	1	1	3
1	CAT 323	Excavator	1	1	3
1	CAT 326	Excavator	1	1	0.5
1	02016	Front End Loader	1	0	0
1	FL6223TB	Push Boat	1	1	3
1	FL2474PP	Support Boat	1	0	0
1	N6143X	Fuel Truck	1	0	0
1	P9457E	Water Truck	1	0	0
1	Z67EAZ	Dump truck	1	0	0
1	MB38DQ	Utility Truck	1	0	0
1	5178CR	Transport Truck	1	0	0

Visitors			
Name	Company	Hours at Job Site	
		From:	To:

Inspector Name and Position	Hours at Job Site/Office		Total Hours
Sam Boyd, EIT – Inspector	From: 9:00 AM	To: 5:00 PM	8 hours

SE S SW
120 150 180 210
☀ 165°S (T) ☉ 26°8'13"N, 81°47'16"W ±16ft ▲ 9ft



17 Nov 2021, 14:06:12

Checking connection on the 323 excavator



☀ 175°S (T) ● 26°8'14"N, 81°47'16"W ±13ft ▲ 8ft



323 excavator lifting spud to allow push boat to move barge from station 1+50 to 3+50

E SE S
60 90 120 150 180
☀ 122°SE (T) ☉ 26°8'13"N, 81°47'14"W ±19ft ▲ 9ft



17 Nov 2021, 15:22:53

323 excavator grinding rock at station 4+00

S 180 SW 210 240 W 270 300
☉ 231°SW (T) ● 26°8'13"N, 81°47'16"W ±29ft ▲ 8ft



Turbidity curtain across the mouth of Canal CC-CC



☀ 110°E (T) ● 26°8'13"N, 81°47'14"W ±13ft ▲ 8ft



17 Nov 2021, 16:02:09

323 excavator grinding rock at station 4+00



DAILY REPORT OF CONSTRUCTION
 21-036 EAST NAPLES BAY
 DREDGING AND ROCK REMOVAL PROJECT



Date: 11/18/2021			
Inspectors: SB	Stantec PIN: 2028113191		Accidents <input type="checkbox"/> Yes <input checked="" type="checkbox"/> No
Day of Week: Thursday	Contract Day: 32/365	Week: 5	Accident Report #: N/A
High Temp (°F): 79°F	AM Conditions: Rainy	PM Conditions: Rainy	High Tide: 12:43 PM – +2.5'
Low Temp (°F): 71°F	Wind: 6mph	Wind: 3mph	Low Tide: 6:31 PM – +1.2'
Canal Worked In: CC-CC	Stations Worked Between:	1+50 to 3+00	

General

#1 – Prime Contractor – Quality Enterprises:

- Contractor’s equipment is staged in canal CC-CC towards the west end of the canal (between stations 1+50 and 2+00). This equipment includes an excavator mounted on the barge, a hopper, and a push boat. Contractor also has a long-reach excavator, a front end loader, a support boat, and two fuel cubes staged on the empty lot property located at 1300 Curlew Avenue, Naples, FL, 34102.
- Contractor installed tires on the end of the hopper as buffers to prevent impact and damage to equipment.
- Contractor installed a bucket angle sensor on 323 excavator and checked its status to confirm it is working.
- Contractor installed turbidity curtain across the mouth of the Canal CC-CC.
- Push boat was used to moved the barge to station 2+50. 323 excavator grinded rock at station 3+00 from 10:20 am to 11:30 am.
- Push boat was used to move the barge, 323 excavator, and hopper back to station 1+50.
- Contractor grinded rock between stations 2+50 and 3+00 from 1:30 pm to 4:30 pm.
- Contractor removed turbidity curtain from across the mouth of Canal CC-CC.

Contractor(s) and Personnel										
#	Name	Type	#	Hrs.	Type	#	Hrs.	Type	#	Hrs.
1	Prime: Quality Enterprises	PM	0	0	Boat Captain	1	9	Foreman	0	0
		Excavator Operator	1	9	Truck Driver	0	0	Assistant	1	9
		Technician	1	2	Superintendent	1	9	VP	0	0

Equipment					
Cont/ Sub #	Equipment ID	Description	# Pieces	# Used	Total Hours Used
1	N/A	Barge	1	1	9
1	CAT 323	Excavator	1	1	9
1	CAT 326	Excavator	1	0	0
1	02016	Front End Loader	1	0	0
1	FL6223TB	Push Boat	1	1	5
1	FL2474PP	Support Boat	1	0	0
1	N6143X	Fuel Truck	1	0	0
1	P9457E	Water Truck	1	0	0
1	Z67EAZ	Dump truck	1	0	0
1	MB38DQ	Utility Truck	1	1	2
1	5178CR	Transport Truck	1	0	0

Visitors			
Name	Company	Hours at Job Site	
		From:	To:

Inspector Name and Position	Hours at Job Site/Office		Total Hours
Sam Boyd, EIT – Inspector	From: 8:00 AM	To: 4:30 PM	8.5 hours



Attaching tires as buffers to the hopper

SE S SW
120 150 180 210 240

☀ 188°S (T) ☉ 26°8'13"N, 81°47'16"W ±98ft ▲ 8ft



18 Nov 2021, 09:42:24

Attaching Epiroc grinder to 323 excavator



☉ 144°SE (T) ☉ 26°8'13"N, 81°47'16"W ±13ft ▲ 8ft



323 excavator lifting spud to allow push boat to move the barge to station 2+50

E 0 SE 120 150 180 S SW 210

☀ 162°S (T) ● 26°8'13"N, 81°47'14"W ±13ft ▲ 9ft



323 excavator grinding rock at station 3+00

S 180 SW 210 240 W 270 NW 300

☀ 249°W (T) ☉ 26°8'13"N, 81°47'16"W ±32ft ▲ 9ft



Installing turbidity curtain across the mouth of Canal CC-CC

SW W NW
210 240 270 300 330

☉ 261°W (T) ☉ 26°8'13"N, 81°47'15"W ±13ft ▲ 9ft



18 Nov 2021, 16:04:58

Turbidity curtain, hopper, and 326 excavator



DAILY REPORT OF CONSTRUCTION
 21-036 EAST NAPLES BAY
 DREDGING AND ROCK REMOVAL PROJECT



Date: 11/19/2021			
Inspectors: SB	Stantec PIN: 2028113191		Accidents <input type="checkbox"/> Yes <input checked="" type="checkbox"/> No
Day of Week: Friday	Contract Day: 33/365	Week: 5	Accident Report #: N/A
High Temp (°F): 81°F	AM Conditions: Cloudy	PM Conditions: Partly-Cloudy	High Tide: 1:19 PM – +2.4'
Low Temp (°F): 70°F	Wind: 7mph	Wind: 14mph	Low Tide: 7:03 AM – -0.2'
Canal Worked In: CC-CC	Stations Worked Between:	1+50 to 3+00	

General

#1 – Prime Contractor – Quality Enterprises:

- Contractor’s equipment is staged in canal CC-CC towards the west end of the canal (between stations 1+50 and 2+00). This equipment includes an excavator mounted on the barge, a hopper, and a push boat. Contractor also has a long-reach excavator, a front end loader, a support boat, and two fuel cubes staged on the empty lot property located at 1300 Curlew Avenue, Naples, FL, 34102.
- Contractor installed turbidity curtain across the mouth of the Canal CC-CC.
- Contractor pumped water out of the hopper.
- Contractor grinded rock with 323 excavator between stations 2+50 and 3+00 from 7:30 am to 11:45 am.
- Water truck came to 1300 Curlew Avenue at 10:00 am.
- Contractor came back to 1300 Curlew Avenue with a 10 foot metal fence.
- Contractor grinded rock with 323 excavator between stations 2+00 and 2+50 from 1:15 pm to 3:15 pm.
- Contractor used front end loader to help install the metal fence at the entrance to 1300 Curlew Avenue.
- Push boat used to move barge and 323 excavator back to station 1+50 at 3:30 pm.
- Water truck was used to clean off barge, 323 excavator, hopper, and push boat.

Contractor(s) and Personnel										
#	Name	Type	#	Hrs.	Type	#	Hrs.	Type	#	Hrs.
1	Prime: Quality Enterprises	PM	0	0	Boat Captain	1	9	Foreman	0	0
		Excavator Operator	1	9	Truck Driver	1	0.5	Assistant	1	9
		Technician	0	0	Superintendent	1	9	VP	0	0

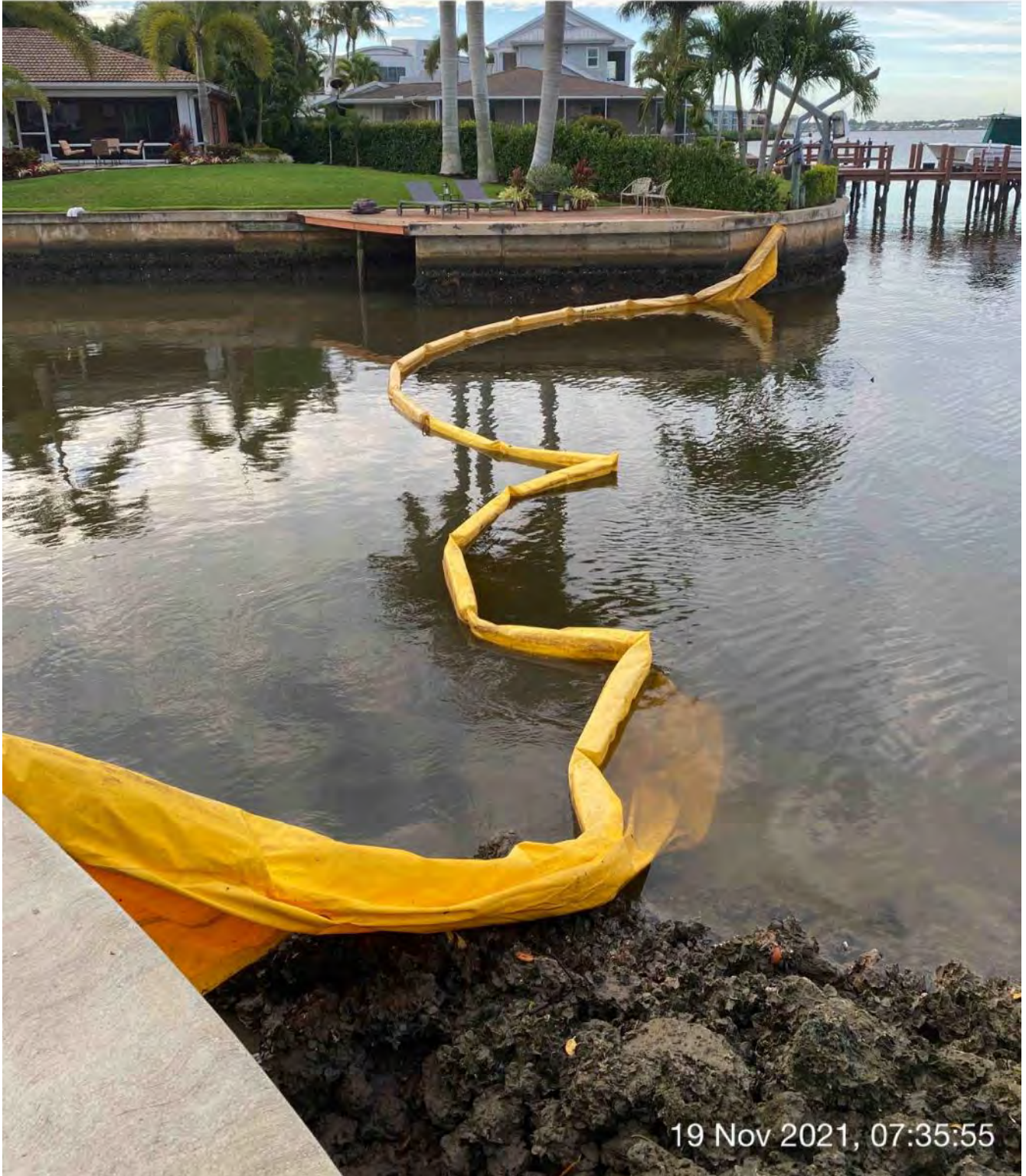
Equipment					
Cont/ Sub #	Equipment ID	Description	# Pieces	# Used	Total Hours Used
1	N/A	Barge	1	1	9
1	CAT 323	Excavator	1	1	9
1	CAT 326	Excavator	1	0	0
1	02016	Front End Loader	1	1	1
1	FL6223TB	Push Boat	1	1	4
1	FL2474PP	Support Boat	1	0	0
1	N6143X	Fuel Truck	1	0	0
1	P9457E	Water Truck	1	1	0.5
1	Z67EAZ	Dump truck	1	0	0
1	MB38DQ	Utility Truck	1	0	0
1	5178CR	Transport Truck	1	0	0

Visitors			
Name	Company	Hours at Job Site	
		From:	To:

Inspector Name and Position	Hours at Job Site/Office		Total Hours
Sam Boyd, EIT – Inspector	From: 7:30 AM	To: 4:00 PM	8.5 hours



☀ 184°S (T) ☉ 26°8'13"N, 81°47'16"W ±22ft ▲ 9ft



19 Nov 2021, 07:35:55

Turbidity curtain across the mouth of Canal CC-CC

E 90 SE 120 150 180 S 210 SW

☀ 158°S (T) ☉ 26°8'13"N, 81°47'14"W ±29ft ▲ 8ft



323 excavator grinding rock at station 3+00

SW W NW
210 240 270 300
☉ 253°W (T) ☉ 26°8'13"N, 81°47'15"W ±32ft ▲ 8ft



Hopper with sediment tied to the barrier walls at station 1+50 on the south side of 1300 Curlew Avenue



☀ 173°S (T) ● 26°8'13"N, 81°47'14"W ±22ft ▲ 8ft



323 excavator grinding rock at station 2+50



☀ 26°NE (T) ● 26°8'14"N, 81°47'16"W ±19ft ▲ 8ft



19 Nov 2021, 13:37:53

Installing metal fence at the entrance to the property at 1300 Curlew Avenue with front end loader

W 270 NW 300 330 N 0 NE 30
☀ 337°NW (T) ☉ 26°8'14"N, 81°47'15"W ±16ft ▲ 8ft



Metal fence installed at the entrance of 1300 Curlew Avenue

E 90 120 SE 150 S 180
☀ 121°SE (T) ☉ 26°8'13"N, 81°47'15"W ±19ft ▲ 8ft



19 Nov 2021, 15:14:16

323 excavator grinding rock at station 3+00