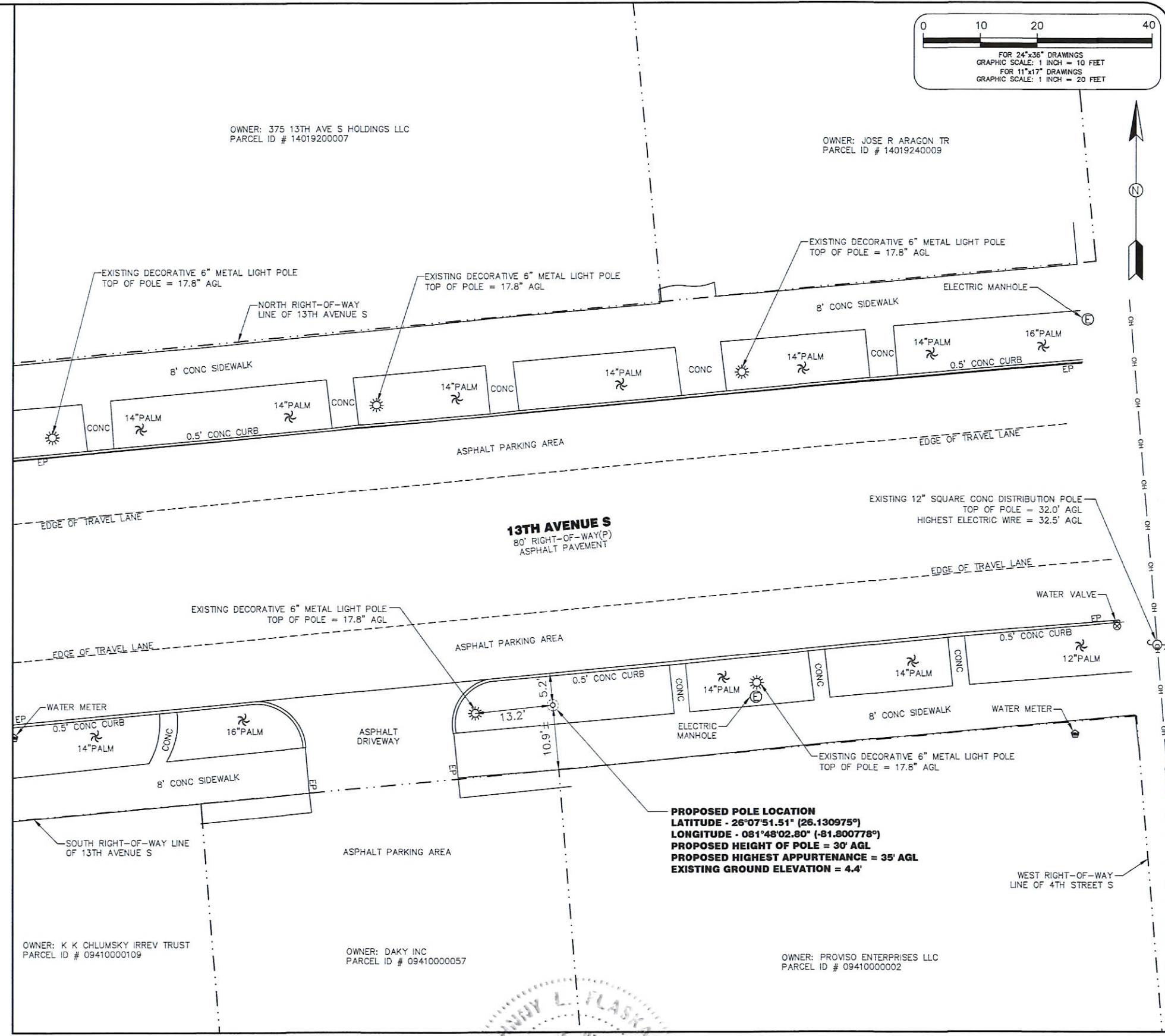


SURVEYOR'S NOTES:

1. THIS SURVEY WAS PERFORMED ON THE GROUND ON AUGUST 4, 2022 UNDER THE SUPERVISION OF A FLORIDA PROFESSIONAL SURVEYOR & MAPPER.
2. THE SUBJECT PROJECT AREA APPEARS TO BE WITHIN ZONE "AE", MAP NUMBER 12021C0393H, COMMUNITY NUMBER 125130, PANEL NUMBER 0393, SUFFIX H WITH AN EFFECTIVE DATE OF 05/16/2012, HAVING A BASE FLOOD ELEVATION OF 9' (NORTH AMERICAN VERTICAL DATUM OF 1985).
3. ALL DIMENSIONS SHOWN ARE IN FEET AND DECIMAL PARTS THEREOF.
4. THIS SURVEY DOES NOT REFLECT OR DETERMINE OWNERSHIP.
5. NO UTILITIES (UNDERGROUND OR ABOVE-GROUND) WERE LOCATED EXCEPT AS SHOWN HEREON.
6. NO SEARCH FOR VISIBLE EVIDENCE OF EXISTING OR FORMER AREAS OF FACILITIES WHICH MAY HAVE INVOLVED THE USE OF STORAGE OF HAZARDOUS MATERIALS WAS MADE.
7. NO WETLAND AREAS OR JURISDICTIONAL WETLANDS WERE LOCATED OR ARE SHOWN ON THIS SURVEY.
8. THIS SURVEY WAS PREPARED WITHOUT THE BENEFIT OF A TITLE COMMITMENT; NO ABSTRACT EXAMINATION IS IMPLIED.
9. INFORMATION SHOWN HEREON MAY BE SUBJECT TO EASEMENTS, RESTRICTIONS AND RESERVATIONS OF RECORD.
10. REPRODUCTIONS OF THIS SURVEY ARE NOT VALID UNLESS SIGNED AND SEALED WITH AN ORIGINAL RAISED SURVEYOR'S SEAL.
11. ADDITIONS OR DELETIONS TO THIS SURVEY MAP BY ANY OTHER THAN THE SIGNING SURVEYOR ARE PROHIBITED WITHOUT THE WRITTEN CONSENT OF THE SURVEYOR OF RECORD.
12. THIS SURVEY WAS CREATED TO SHOW THE PROPOSED LOCATION OF A POLE STRUCTURE ALONG WITH DEPICTING THE RIGHT-OF-WAY LINES OF 13TH AVENUE S, AND TOPOGRAPHIC LOCATION OF IMPROVEMENTS WITHIN AN AREA DETERMINED BY CLIENT TO HELP IN THEIR DESIGN OF A TELECOMMUNICATIONS STRUCTURE.
13. THE SYMBOL SHOWN FOR THE PROPOSED POLE IS SHOWN AS A 10" DIAMETER POLE CENTERED ON A 2' DIAMETER FOUNDATION. ALL DIMENSIONS SHOWN ARE TO THE EDGE OF THE 10" DIAMETER PROPOSED POLE.
14. THIS SURVEY MAP IS INTENDED TO BE DISPLAYED AT A SCALE OF 1 INCH = 10 FEET FOR 24"x36" DRAWINGS AND 1 INCH = 20 FEET FOR 11"x17" DRAWINGS OR SMALLER.
15. THE COORDINATES SHOWN HEREON ARE IN NORTH AMERICAN DATUM OF 1983, ARE TO THE THIRD ORDER OF ACCURACY, AND IS BASED ON MULTI FREQUENCY GNSS CORRECTIONS OBTAINED FROM THE FLORIDA DEPARTMENT OF TRANSPORTATIONS FLORIDA PERMANENT REFERENCE NETWORK (FPRN).
16. THE ELEVATIONS SHOWN HEREON ARE IN NORTH AMERICAN VERTICAL DATUM OF 1988, ARE TO THE THIRD ORDER OF ACCURACY, AND IS BASED ON MULTI FREQUENCY GNSS CORRECTIONS OBTAINED FROM THE FLORIDA DEPARTMENT OF TRANSPORTATIONS FLORIDA PERMANENT REFERENCE NETWORK (FPRN).

LEGEND:

- (C) = CALCULATED
- (F) = FIELD
- (P) = PLAT
- (D) = DEED
- F.D.O.T. = FLORIDA DEPARTMENT OF TRANSPORTATION
- NO. = NUMBER
- LB = LICENSED BUSINESS
- RCP = REINFORCED CONCRETE PIPE
- CMP = CORRUGATED METAL PIPE
- TPED = TELEPHONE PEDESTAL
- TSV = TRAFFIC SIGNAL VAULT
- TOB = TOP OF BANK
- EP = EDGE OF PAVEMENT
- AGL = ABOVE GROUND LEVEL
- CONC = CONCRETE
- ELEV = ELEVATION
- T = TOWNSHIP
- R = RANGE
- O.R. = OFFICIAL RECORDS
- ID = IDENTIFICATION
- W/ = WITH
- MES = MITERED END SECTION
- TYP. = TYPICAL
- CLF = CHAIN LINK FENCE
- OH = OVERHEAD LINE
- U = UTILITY POLE
- TSV = TRAFFIC SIGNAL VAULT
- TSV = TRAFFIC SIGN
- PALM = PALM TREE
- MISCELLANEOUS TREE



SPECIFIC PURPOSE SURVEY OF PROPOSED POLE LOCATION AND TOPOGRAPHIC LOCATION OF IMPROVEMENTS

REVISIONS	PREPARED FOR:

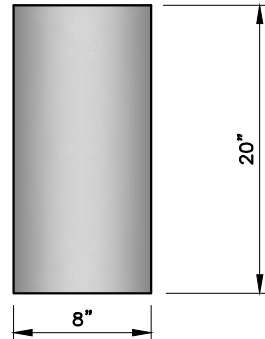
NOT VALID WITHOUT THE SIGNATURE AND ORIGINAL RAISED SEAL OF A FLORIDA LICENSED SURVEYOR & MAPPER.

JOHNNY L. FLASKAMP
FLORIDA PROFESSIONAL SURVEYOR & MAPPER NO. 6601

DRAWING INFORMATION:	
FIELD DATE:	08-04-2022
DRAWN DATE:	08-08-2022
CHECK DATE:	08-08-2022
SEC.-TWP.-RGE.:	09-50S-25E

SITE INFORMATION:	
15033513 NAPLES DT NAP003	
RIGHT-OF-WAY OF 13TH AVENUE S JUST WEST OF 4TH STREET S NAPLES, FLORIDA 34102	
SMW PROJECT NUMBER:	22-5416
SURVEY SHEET	1 OF 1

SMALL CELL ANTENNAS TO BE FLUSH MOUNTED TO POLE. CONTRACTOR TO PROVIDE MOUNT.

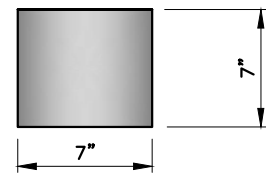


SMALL CELL ANTENNA	
DIMENSIONS (LxWxD) 20"x8"x5"
ANTENNA WEIGHT 53 LBS
VOL. IN CUBIC FT. 0.463

SMALL CELL ANTENNA

NTS 1

LAA ANTENNAS TO BE BANDED TO POLE. CONTRACTOR TO PROVIDE MOUNT.



LAA ANTENNA	
DIMENSIONS (LxWxD) 7"x7"x4"
ANTENNA WEIGHT 12.24 LBS
VOL. IN CUBIC FT. 0.11

LAA ANTENNA

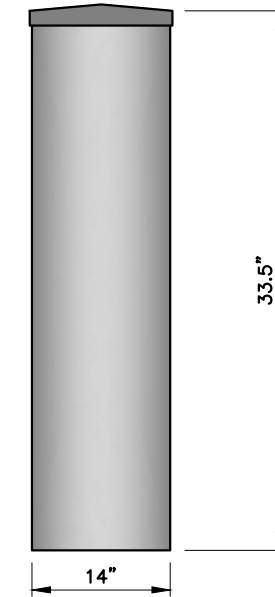
NTS 2

HB687 – DEFINES EACH ANTENNA TO NOT EXCEED 6 CUBIC FEET.

CONTRACTOR TO SUPPLY ANTENNA MOUNT. CONTRACTOR TO COORDINATE WITH ANTENNA MANUFACTURER.

ALL ATTACHED HARDWARE AND EQUIPMENT TO CONFORM TO THE CITY'S UPDATED DESIGN, MATERIAL AND COLOR. ALL ABOVE GROUND EQUIPMENT INCLUDING – ANTENNA, SHROUD, EQUIPMENT CABINET, METER & DISCONNECT.

JMA MODEL CX140MI236-1C	
DIMENSIONS (LxWxD) 33.5"x14"Ø
ANTENNA WEIGHT 35 LBS
FREQUENCY 1695-2700 MHZ
VOL. IN CUBIC FT. 2.98



Electrical specification (minimum/maximum)	Ports 1, 2			Ports 3, 4, 5, 6				
	698-798	824-894	880-960	1695-1880	1850-1990	1920-2180	2300-2500	2500-2690
Frequency bands, MHz								
Polarization	± 45°			± 45°				
Average gain over all tilts, dBi	5.5	5.3	5.6	9.3	9.5	9.6	9.7	9.8
Horizontal beamwidth (HBW), deg	360°			360°				
Vertical beamwidth, (VBW), deg ¹	45°	44°	31°	16.8°	16.7°	14.4°	14.0°	12.7°
Elec downtilt (EDT) range, deg	0° (FET)			2-8° (MET/RET)				
Min X polar isolation, P2P, dB	25	25	25	25	25	25	25	25
Max VSWR/return loss, dB	1.5:1/ -14.0			1.5:1/ -14.0				
PIM	-153			-153				
Maximum input power port	250			150				

Electrical specification (minimum/maximum)	Ports 7,8,9,10		Ports 11,12, 13,14				
	3550-3700	5150-5350	5350-5470	5470-5725	5725-5850	5850-5925	
Frequency bands, MHz							
Polarization	± 45°		± 45°				
Average gain over all tilts, dBi	5.9		5.5	5.7	5.5	5.5	5.6
Horizontal beamwidth (HBW), deg	360°						
Vertical beamwidth, (VBW), deg ¹	30°		24°	24°	20°	14°	18°
Elec downtilt (EDT) range, deg	0° (FET)						
Min X polar isolation, P2P, dB	25		25				
Max VSWR/return loss, dB	1.5:1/ -14.0		1.5:1/ -14.0				
PIM	N/A						
Maximum input power port	10		.25	-	.25	1.0	-

ANTENNA SPECIFICATIONS

NTS 3

REV	DATE	DESCRIPTION
0	08/25/22	FINAL PLANS ISSUED

PROJECT NO.:	22-5416
DRAWN BY:	J.MENDEZ
PROJECT MANAGER:	M. MURPHY
CHECKED BY:	M. MURPHY

THIS DRAWING IS COPYRIGHTED AND IS THE SOLE PROPERTY OF THE OWNER. IT IS PRODUCED SOLELY FOR USE BY THE OWNER AND ITS AFFILIATES. REPRODUCTION OR USE OF THIS DRAWING AND/OR THE INFORMATION CONTAINED IN IT IS FORBIDDEN WITHOUT THE WRITTEN PERMISSION OF THE OWNER.



12979 TELECOM PARKWAY N
TEMPLE TERRACE, FLORIDA 33637
(813) 615-1422

CERTIFICATE OF AUTHORIZATION 33693



7701 TELECOM PARKWAY EAST
TEMPLE TERRACE, FLORIDA 33637

THIS DOCUMENT HAS BEEN ELECTRONICALLY SIGNED AND SEALED BY JEREMY D. SHARIT, PE (#75137) USING A DIGITAL SIGNATURE IN ACCORDANCE WITH F.A.C. 61G15-23.004, WITH A DIGITAL CERTIFICATE ISSUED BY ENTRUST, INC. PLEASE REFERENCE SHEET T1 TO VIEW THE SIGNATURE AND VERIFY ITS PROPERTIES. PRINTED COPIES OF THIS DOCUMENT ARE NOT CONSIDERED SIGNED AND SEALED AND THE SIGNATURE MUST BE VERIFIED ON ANY ELECTRONIC COPIES.

NAPLES DT NAP003
#15033513

RIGHT-OF-WAY OF 13TH AVENUE S
JUST WEST OF 4TH STREET S
NAPLES, FLORIDA 34102
(COLLIER COUNTY)

SHEET NAME

ANTENNA
DETAILS

SHEET NUMBER

C6

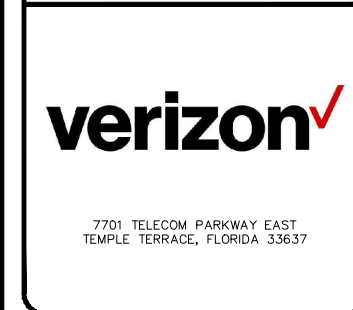
REV	DATE	DESCRIPTION
0	08/25/22	FINAL PLANS ISSUED

PROJECT NO.:	22-5416
DRAWN BY:	J.MENDEZ
PROJECT MANAGER:	M. MURPHY
CHECKED BY:	M. MURPHY

THIS DRAWING IS COPYRIGHTED AND IS THE SOLE PROPERTY OF THE OWNER. IT IS PRODUCED SOLELY FOR USE BY THE OWNER AND ITS AFFILIATES. REPRODUCTION OR USE OF THIS DRAWING AND/OR THE INFORMATION CONTAINED IN IT IS FORBIDDEN WITHOUT THE WRITTEN PERMISSION OF THE OWNER.



12979 TELECOM PARKWAY N
 TEMPLE TERRACE, FLORIDA 33637
 (813) 615-1422
 CERTIFICATE OF AUTHORIZATION 33693

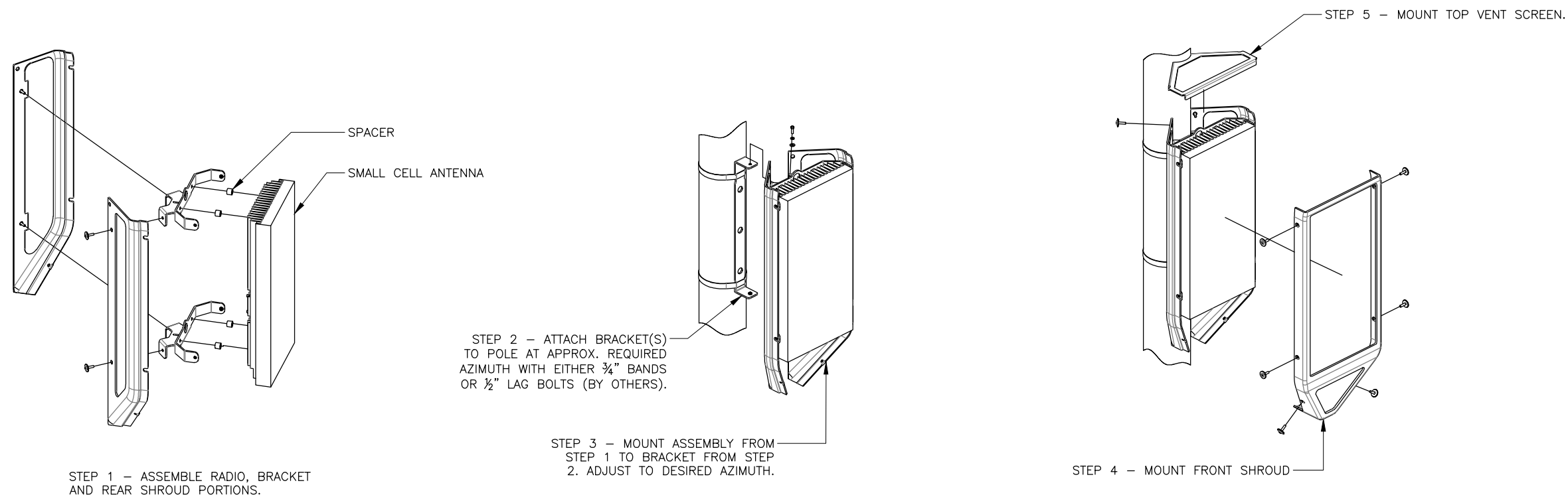


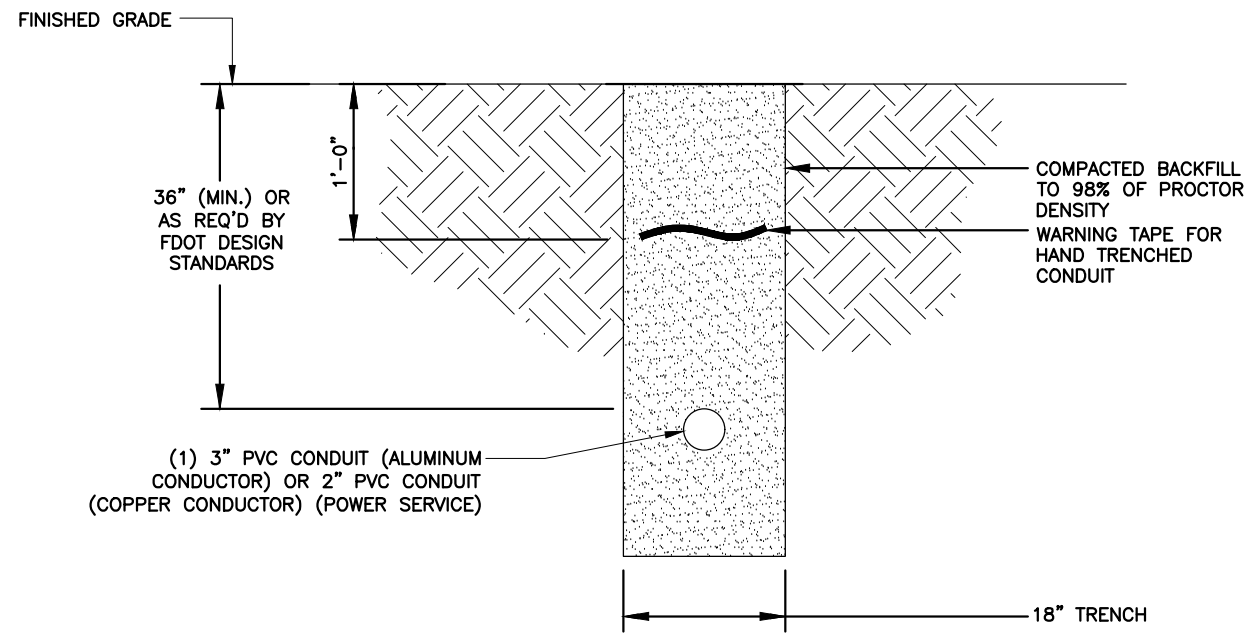
THIS DOCUMENT HAS BEEN ELECTRONICALLY SIGNED AND SEALED BY JEREMY D. SHARIT, PE (#75137) USING A DIGITAL SIGNATURE IN ACCORDANCE WITH F.A.C. 61G15-23.004, WITH A DIGITAL CERTIFICATE ISSUED BY ENTRUST, INC. PLEASE REFERENCE SHEET T1 TO VIEW THE SIGNATURE AND VERIFY ITS PROPERTIES. PRINTED COPIES OF THIS DOCUMENT ARE NOT CONSIDERED SIGNED AND SEALED AND THE SIGNATURE MUST BE VERIFIED ON ANY ELECTRONIC COPIES.

NAPLES DT NAP003
 #15033513
 RIGHT-OF-WAY OF 13TH AVENUE S
 JUST WEST OF 4TH STREET S
 NAPLES, FLORIDA 34102
 (COLLIER COUNTY)

SHEET NAME
 ANTENNA MOUNTING
 DETAIL

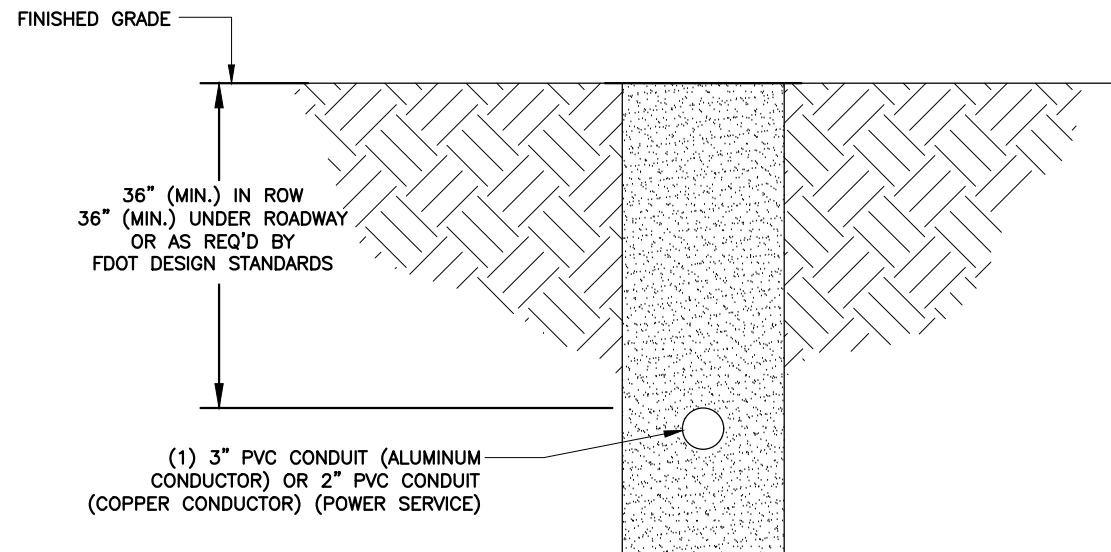
SHEET NUMBER
 C7





TRENCHING DETAIL

NTS 1



BORING DETAIL

NTS 2

REV	DATE	DESCRIPTION
0	08/25/22	FINAL PLANS ISSUED

PROJECT NO.:	22-5416
DRAWN BY:	J.MENDEZ
PROJECT MANAGER:	M. MURPHY
CHECKED BY:	M. MURPHY

THIS DRAWING IS COPYRIGHTED AND IS THE SOLE PROPERTY OF THE OWNER. IT IS PRODUCED SOLELY FOR USE BY THE OWNER AND ITS AFFILIATES. REPRODUCTION OR USE OF THIS DRAWING AND/OR THE INFORMATION CONTAINED IN IT IS FORBIDDEN WITHOUT THE WRITTEN PERMISSION OF THE OWNER.



12979 TELECOM PARKWAY N
TEMPLE TERRACE, FLORIDA 33637
(813) 615-1422

CERTIFICATE OF AUTHORIZATION 33693



7701 TELECOM PARKWAY EAST
TEMPLE TERRACE, FLORIDA 33637

THIS DOCUMENT HAS BEEN ELECTRONICALLY SIGNED AND SEALED BY JEREMY D. SHARIT, PE (#75137) USING A DIGITAL SIGNATURE IN ACCORDANCE WITH F.A.C. 61G15-23.004, WITH A DIGITAL CERTIFICATE ISSUED BY ENTRUST, INC. PLEASE REFERENCE SHEET T1 TO VIEW THE SIGNATURE AND VERIFY ITS PROPERTIES. PRINTED COPIES OF THIS DOCUMENT ARE NOT CONSIDERED SIGNED AND SEALED AND THE SIGNATURE MUST BE VERIFIED ON ANY ELECTRONIC COPIES.

NAPLES DT NAP003
#15033513

RIGHT-OF-WAY OF 13TH AVENUE S
JUST WEST OF 4TH STREET S
NAPLES, FLORIDA 34102
(COLLIER COUNTY)

SHEET NAME
ELECTRICAL
DETAILS

SHEET NUMBER
E4

