

# CITY OF NAPLES TRAFFIC MANAGEMENT CENTER QUARTERLY DASHBOARD July – August- September 2020

## ITS & Network Device Summary

**Number of Devices Connected**



**Traffic Signals on SR US41** 21



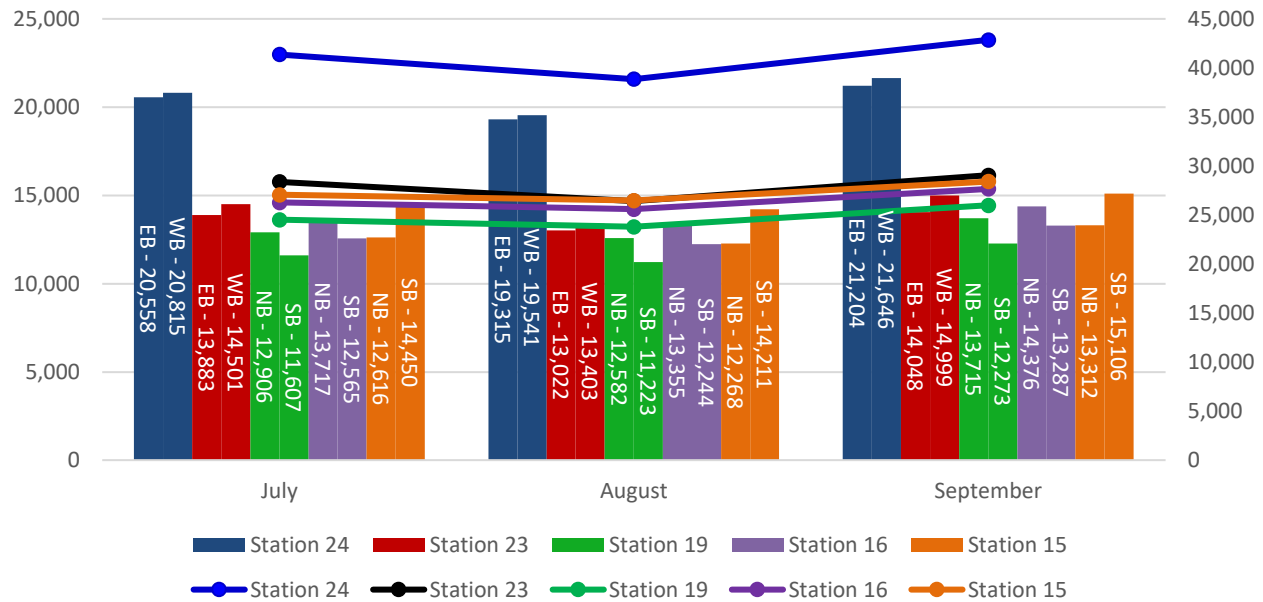
**Video Monitoring** 45

**Closed Circuit Television Cameras (CCTV)**



**Servers** 3

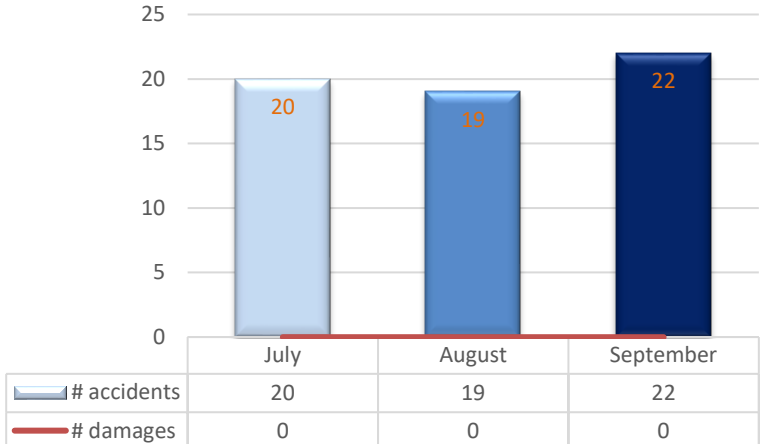
## TRAFFIC VOLUMES ON US41



## US41 VOLUME COUNT STATIONS

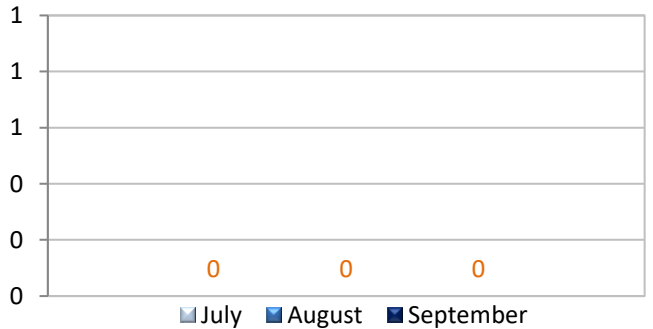


## US41 ACCIDENTS AND DAMAGES

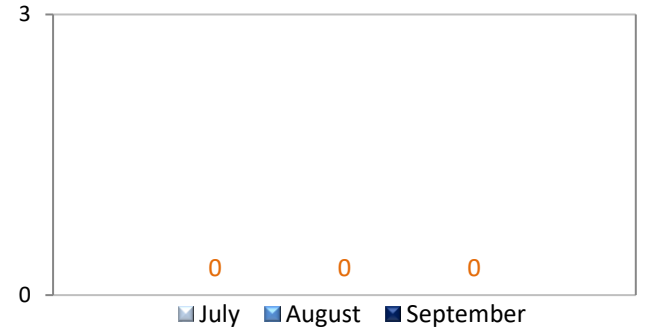


## NOTIFICATIONS

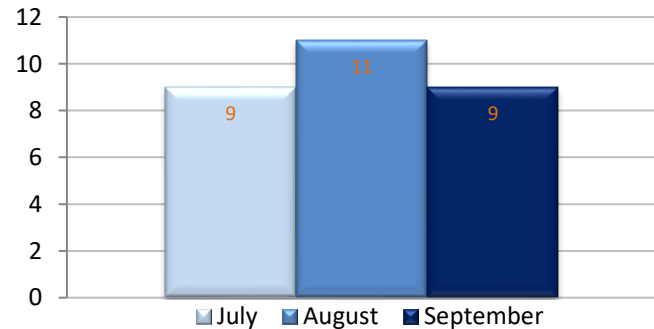
**Congestion Notifications**



**Critical Malfunctions Notifications**



**Preventative Maintenance**



# CITY OF NAPLES TRAFFIC MANAGEMENT CENTER

## QUARTERLY DASHBOARD

July – August- September 2020



### DEFINITIONS

<b>Incident Detected</b>	Any incident estimated to be less than 30 minutes in duration
<b>Preventative Maintenance</b>	Replacement of LED inserts, pedestrian signals, traffic signals, and Ped buttons
<b>Accidents</b>	Crashes on US41
<b>Critical Malfunctions</b>	<ul style="list-style-type: none"> <li>Loss of power to traffic signal</li> <li>Loss of communication</li> <li>Traffic signal in CONFLICT FLASH operation</li> </ul>
<b>Damages</b>	<p>Traffic device(s) damaged due to vehicle accident.</p> <ul style="list-style-type: none"> <li>Traffic cabinet</li> <li>Pedestrian signal</li> <li>Pull box</li> <li>UPS</li> <li>Uprights/mast arms</li> <li>Lollipop</li> </ul>

### BAR CHARTS

<b>Congestion Notifications</b>	Number of requests to investigate traffic congestion on US41
<b>Critical Malfunctions Notifications</b>	Number of critical malfunction incidents reported and investigated/repared
<b>Preventative Maintenance</b>	Number of visits traffic technicians check all functions in traffic cabinets
<b>Traffic device(s) damaged due to vehicle accidents</b>	Number of traffic devices damaged due to vehicle accidents on US41
<b>Accidents on US41</b>	Monthly reported accidents on US41
<b>Volumes on US41</b>	<p>Quantity of vehicles traveling on US41 within a 24-hour period</p> <ul style="list-style-type: none"> <li>Bar graph shows eastbound, westbound, northbound, and southbound quantities per station</li> <li>Line graph shows total volume quantities per station</li> </ul>