

**CITY OF NAPLES
PURCHASING DIVISION
CITY HALL, 735 8TH STREET SOUTH
NAPLES, FLORIDA 34102
PH: 239-213-7100 FX: 239-213-7105**

ADDENDUM NUMBER 3

NOTIFICATION DATE:	SOLICITATION TITLE:	SOLICITATION NUMBER:	BID OPENING DATE & TIME:
9/29/2023	Equipment Services Locker Room Remodel FWQ	23-040	10/4/2023 4:00PM

**THE FOLLOWING INFORMATION IS HEREBY INCORPORATED INTO,
AND MADE AN OFFICIAL PART OF THE ABOVE REFERENCED BID.**

The following answer to written submitted question:

###

Q. We need better clarification.

Per the drawing they provided, as I look at it now, it shows the shower opening in the middle of a longer shower than what is existing.

Q. A 60" sink will extend to where the existing sink ends near the urinal. Is that your intention or can we propose a 48" sink?

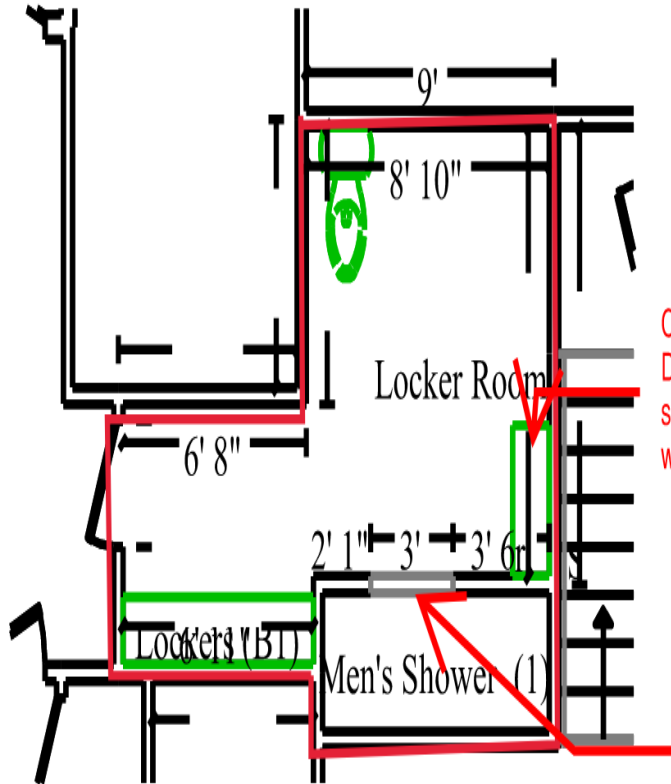
A. No, the sink will be 60" as a 48" will not except a double bowl, the sink will be moved away from the urinal. We can adjust placement as needed.

Q. Is the shower opening moving? This was not included in the scope sheet. If this is the case, can we verify measurements as there seems to be some discrepancy?

A. No, the opening will remain as current configuration. Please note the dimensions should be verified by the contractors.

If you wish to stop by, we are opened 07:00 to 17:00 M-F

Mens Locker Room Dimensions



Can we go with a 48" sink
Drawing is not a goos scale, 6 foot
sink will almost put us back to
were the ex. sink is.

Need clarification , per this drawing , is this the new shower
opening ?
Or is the shower staying the same size?