

# NAPLES PIER RECONSTRUCTION

25 12th Ave S., Naples FL 34102

**TURRELL, HALL & ASSOCIATES, INC.**  
MARINE & ENVIRONMENTAL CONSULTING  
TODD T. TURRELL, P.E.  
3584 EXCHANGE AVE, NAPLES FL 34104  
TEL: (239) 444-4444  
WWW.THNAPEE.COM  
EMAIL: TTURRELL@THNAPEE.COM

**HUMISTON AND MOORE ENGINEERS**  
CONSULTING COASTAL ENGINEERS  
MARC J. DAMON, P.E.  
BRETT MOORE, P.E.  
5679 STRAND CT, NAPLES FL 34110  
TEL: (239) 439-4333  
WWW.HUMISTONANDMOORE.COM  
EMAIL: MDAMON@HUMISTONANDMOORE.COM

**NOVA**  
GEOTECHNICAL ENGINEERING  
ANDY ALBERDI, P.E.  
HEADQUARTERS:  
3000 KENNEDY 75 PARKWAY  
ANN ARBOR, MI 48106  
REGIONAL OFFICE:  
4524 OAK FAIR BLVD, STE 200, TAMPA FL 33610  
TEL: (813) 952-5100  
WWW.NOVAENGINEERING.COM  
EMAIL: AALBERDI@NOVA.COM

**OSBORN ENGINEERING**  
STRUCTURAL ENGINEERING  
BYRON EVETS, P.E.  
MAT FURJANIC, P.E.  
1111 SUPERIOR AVE, SUITE 2100 CLEVELAND, OH 44114  
HEADQUARTERS:  
1111 SUPERIOR AVE, SUITE 2100 CLEVELAND, OH 44114  
REGIONAL OFFICE:  
102 W. WILSON DR, STE 105, CAPE CANAVERAL FL 32920  
TEL: (352) 243-1234 OR STE 105, CAPE CANAVERAL FL 32920  
WWW.OSBORNEENGINEERING.COM  
EMAIL: BEVETS@OSBORNE.COM

**QUALUS**  
ELECTRICAL ENGINEERING  
NICK YONKONZE  
SETH KWANTEL  
100 COLONIAL CENTER PKWY, STE 400,  
LAKE MARY FL 32746  
TEL: (904) 919-1494  
WWW.QUALUSCORP.COM  
EMAIL: NICK.YONKONZE@QUALUSCORP.COM

EXHIBIT G - 2023-09-25\_23118\_NaplesPier\_90%CDset\_Draft



25 12th Ave S, Naples FL 34102

NAPEL PIER RECONSTRUCTION

NOT FOR CONSTRUCTION

Table with 2 columns: SHEET NUMBER, SHEET DATE

PROJECT INFORMATION

PHASE CD, PR NO 23118, G.100

GENERAL NOTES:

1. THE ARCHITECT HAS REVIEWED THE CONTRACT DOCUMENTS TO DETERMINE AND DISCLOSE A COMPLETE LIST OF ALL MATERIALS TO BE USED IN THE PROJECT...

TERMITE PROTECTION:

1. TERMITE PROTECTION SHALL BE PROVIDED BY REGISTERED TERMITE REMEDIATION INCLUDING BUT NOT LIMITED TO THE FOLLOWING: 1.1. ALL EXISTING FOUNDATIONS SHALL BE TREATED WITH TERMITICIDE...

PROJECT SUMMARY:

THIS IS A PERMIT APPLICATION FOR THE RECONSTRUCTION OF THE NAPEL PIER. THE PROJECT IS LOCATED AT 25 12TH AVENUE SOUTH, NAPLES, FL 34102.

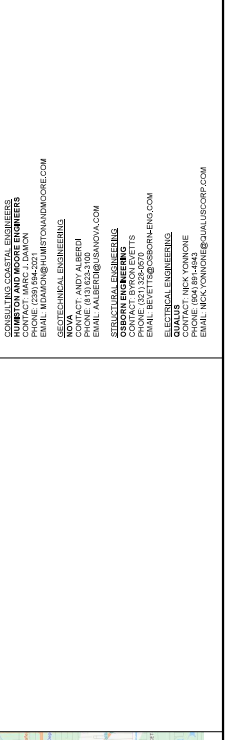
CODE ANALYSIS: FBC 7TH ED 2020:

Table with columns: APPLICABLE CODES, COMMENTS, SECTION

DRAWING INDEX:

Table with columns: SHEET NUMBER, SHEET NAME

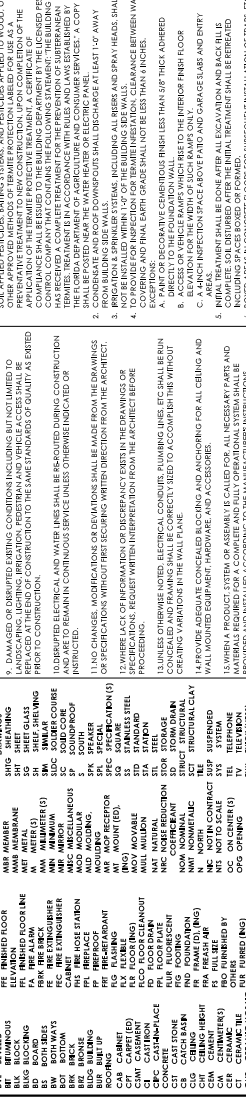
PROJECT LOCATION MAP:



ABBREVIATIONS:

Table of abbreviations for construction elements like AC, AD, AE, AF, AG, AH, AI, AJ, AK, AL, AM, AN, AO, AP, AQ, AR, AS, AT, AU, AV, AW, AX, AY, AZ, BA, BB, BC, BD, BE, BF, BG, BH, BI, BJ, BK, BL, BM, BN, BO, BP, BQ, BR, BS, BT, BU, BV, BW, BX, BY, BZ, CA, CB, CC, CD, CE, CF, CG, CH, CI, CJ, CK, CL, CM, CN, CO, CP, CQ, CR, CS, CT, CU, CV, CW, CX, CY, CZ, DA, DB, DC, DD, DE, DF, DG, DH, DI, DJ, DK, DL, DM, DN, DO, DP, DQ, DR, DS, DT, DU, DV, DW, DX, DY, DZ, EA, EB, EC, ED, EE, EF, EG, EH, EI, EJ, EK, EL, EM, EN, EO, EP, EQ, ER, ES, ET, EU, EV, EW, EX, EY, EZ, FA, FB, FC, FD, FE, FF, FG, FH, FI, FJ, FK, FL, FM, FN, FO, FP, FQ, FR, FS, FT, FU, FV, FW, FX, FY, FZ, GA, GB, GC, GD, GE, GF, GG, GH, GI, GJ, GK, GL, GM, GN, GO, GP, GQ, GR, GS, GT, GU, GV, GW, GX, GY, GZ, HA, HB, HC, HD, HE, HF, HG, HH, HI, HJ, HK, HL, HM, HN, HO, HP, HQ, HR, HS, HT, HU, HV, HW, HX, HY, HZ, IA, IB, IC, ID, IE, IF, IG, IH, II, IJ, IK, IL, IM, IN, IO, IP, IQ, IR, IS, IT, IU, IV, IW, IX, IY, IZ, JA, JB, JC, JD, JE, JF, JG, JH, JI, JJ, JK, JL, JM, JN, JO, JP, JQ, JR, JS, JT, JU, JV, JW, JX, JY, JZ, KA, KB, KC, KD, KE, KF, KG, KH, KI, KJ, KK, KL, KM, KN, KO, KP, KQ, KR, KS, KT, KU, KV, KW, KX, KY, KZ, LA, LB, LC, LD, LE, LF, LG, LH, LI, LJ, LK, LL, LM, LN, LO, LP, LQ, LR, LS, LT, LU, LV, LW, LX, LY, LZ, MA, MB, MC, MD, ME, MF, MG, MH, MI, MJ, MK, ML, MN, MO, MP, MQ, MR, MS, MT, MU, MV, MW, MX, MY, MZ, NA, NB, NC, ND, NE, NF, NG, NH, NI, NJ, NK, NL, NM, NO, NP, NQ, NR, NS, NT, NU, NV, NW, NX, NY, NZ, OA, OB, OC, OD, OE, OF, OG, OH, OI, OJ, OK, OL, OM, ON, OO, OP, OQ, OR, OS, OT, OU, OV, OW, OX, OY, OZ, PA, PB, PC, PD, PE, PF, PG, PH, PI, PJ, PK, PL, PM, PN, PO, PP, PQ, PR, PS, PT, PU, PV, PW, PX, PY, PZ, QA, QB, QC, QD, QE, QF, QG, QH, QI, QJ, QK, QL, QM, QN, QO, QP, QQ, QR, QS, QT, QU, QV, QW, QX, QY, QZ, RA, RB, RC, RD, RE, RF, RG, RH, RI, RJ, RK, RL, RM, RN, RO, RP, RQ, RR, RS, RT, RU, RV, RW, RX, RY, RZ, SA, SB, SC, SD, SE, SF, SG, SH, SI, SJ, SK, SL, SM, SN, SO, SP, SQ, SR, SS, ST, SU, SV, SW, SX, SY, SZ, TA, TB, TC, TD, TE, TF, TG, TH, TI, TJ, TK, TL, TM, TN, TO, TP, TQ, TR, TS, TT, TU, TV, TW, TX, TY, TZ, UA, UB, UC, UD, UE, UF, UG, UH, UI, UJ, UK, UL, UM, UN, UO, UP, UQ, UR, US, UT, UV, UW, UX, UY, UZ, VA, VB, VC, VD, VE, VF, VG, VH, VI, VJ, VK, VL, VM, VN, VO, VP, VQ, VR, VS, VT, VU, VV, VW, VX, VY, VZ, WA, WB, WC, WD, WE, WF, WG, WH, WI, WJ, WK, WL, WM, WN, WO, WP, WQ, WR, WS, WT, WX, WY, WZ, XA, XB, XC, XD, XE, XF, XG, XH, XI, XJ, XK, XL, XM, XN, XO, XP, XQ, XR, XS, XT, XU, XV, XW, XX, XY, XZ, YA, YB, YC, YD, YE, YF, YG, YH, YI, YJ, YK, YL, YM, YN, YO, YP, YQ, YR, YS, YT, YU, YV, YW, YX, YZ, ZA, ZB, ZC, ZD, ZE, ZF, ZG, ZH, ZI, ZJ, ZK, ZL, ZM, ZN, ZO, ZP, ZQ, ZR, ZS, ZT, ZU, ZV, ZW, ZX, ZY, ZZ

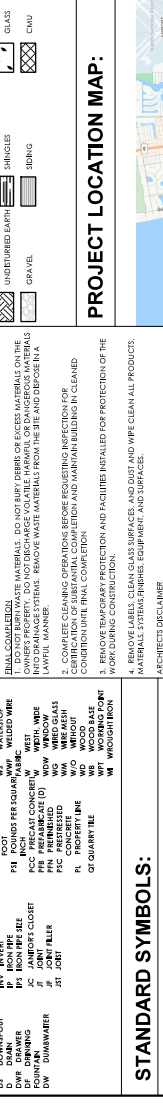
STANDARD SYMBOLS:



MATERIAL LEGEND:

Table mapping material names to symbols: BRICK, STEEL, CERAMIC TILE, ALUMINUM, ROUGH INSULATION, PLASTER, CONCRETE, etc.

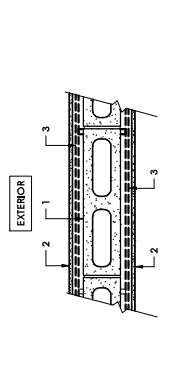
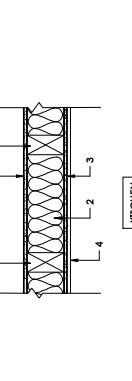
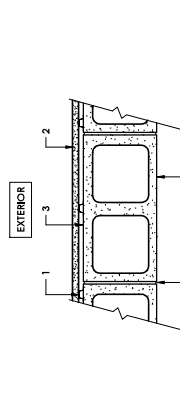
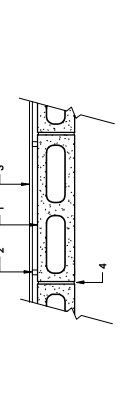
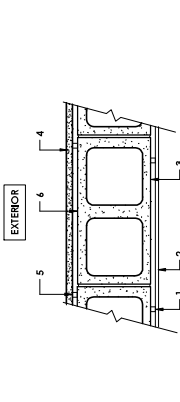
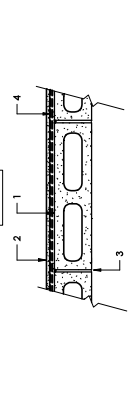
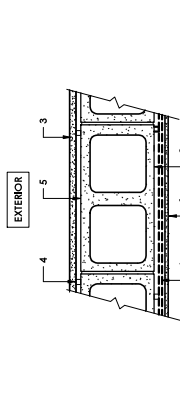
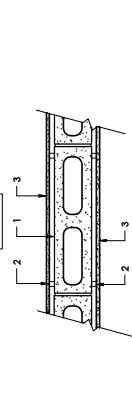


PROJECT LOCATION MAP:



PROJECT INFORMATION:

PROJECT INFORMATION: SHEET NUMBER, SHEET DATE, PROJECT NAME, CLIENT, etc.

**EXHIBIT G - 2023-09-25 23118 NaplesPier 90%CDset Draft**

<p><b>A</b>                  EXISTING HARDIE ARTISAN LAP SIDING/                  NEW DUR-A-WALL VC WAINSCOT</p>		<ol style="list-style-type: none"> <li>1. NEW DUR-A-WALL VC WAINSCOT</li> <li>2. EXISTING 8" MASONRY UNIT WALL</li> <li>3. EXISTING 7 1/4" HARDIE ARTISAN LAP SIDING INSTALLED AT 1 1/4" OVERLAP.</li> <li>4. EXISTING 1"x1" PRESSURE TREATED FURRING STRIPS AT 16" O.C.</li> <li>5. EXISTING HARDIE WRAP WEATHER BARRIER.</li> <li>6. EXISTING FURRING, BACKER BOARD &amp; EPOXY FINISH TO BE REMOVED (BASE BID) EXISTING FURRING, BACKER BOARD &amp; EPOXY FINISH TO REMAIN (ALTERNATE BID)</li> </ol>	<p><b>D</b>                  NEW DUR-A-WALL VC WAINSCOT /                  NEW DUR-A-WALL VC WAINSCOT</p>		<ol style="list-style-type: none"> <li>1. EXISTING 4" MASONRY UNIT WALL</li> <li>2. NEW DUR-A-WALL VC WAINSCOT</li> <li>3. EXISTING FURRING, BACKER BOARD &amp; EPOXY FINISH TO BE REMOVED (BASE BID) EXISTING FURRING, BACKER BOARD &amp; EPOXY FINISH TO REMAIN (ALTERNATE BID)</li> </ol>
<p><b>B</b>                  EXISTING HARDIE ARTISAN LAP SIDING/                  EXISTING/EXISTING IPE WOOD (REFINISH)</p>		<ol style="list-style-type: none"> <li>1. EXISTING 1"x1" PRESSURE TREATED FURRING STRIPS AT 12" O.C.</li> <li>2. EXISTING 1"x4" IPE WOOD, DOUBLE GROOVED, HUNG HORIZONTALLY WITH IPE CUP FASTENERS, REFINISH</li> <li>3. EXISTING 8" MASONRY UNIT WALL</li> <li>4. EXISTING 7 1/4" HARDIE ARTISAN LAP SIDING INSTALLED AT 1 1/4" OVERLAP, REPAIR.</li> <li>5. EXISTING 1"x1" PRESSURE TREATED FURRING STRIPS AT 16" O.C.</li> <li>6. EXISTING HARDIE WRAP WEATHER BARRIER.</li> </ol>	<p><b>C</b>                  EXISTING HARDIE ARTISAN LAP SIDING/                  EXPOSED CEMENT BLOCK</p>		<ol style="list-style-type: none"> <li>1. EXISTING 7/8" MIL-HAT CHANNEL STUDS AT 12" O.C.</li> <li>2. EXISTING 1 1/4" HARDIE ARTISAN LAP SIDING INSTALLED AT 1 1/4" OVERLAP, REPAIR</li> <li>3. EXISTING 8" MASONRY UNIT WALL (REPAIR)</li> <li>4. TOOLED JOINTS.</li> </ol>
<p><b>F</b>                  EXISTING IPE WOOD (REFINISH) /                  EXISTING IPE WOOD (REFINISH)</p>		<ol style="list-style-type: none"> <li>1. EXISTING 4" MASONRY UNIT WALL</li> <li>2. NEW DUR-A-WALL VC WAINSCOT</li> <li>3. TOOLED JOINTS, (REPAIR)</li> <li>4. EXISTING FURRING, BACKER BOARD &amp; EPOXY FINISH TO BE REMOVED (BASE BID) EXISTING FURRING, BACKER BOARD &amp; EPOXY FINISH TO REMAIN (ALTERNATE BID)</li> </ol>	<p><b>G</b>                  EXISTING IPE WOOD (REFINISH) /                  EXISTING CONCRETE BLOCK (REPAIR)</p>		<ol style="list-style-type: none"> <li>1. EXISTING 4" MASONRY UNIT WALL</li> <li>2. EXISTING 1X PRESSURE TREATED FURRING STRIPS AT 12" O.C.</li> <li>3. EXISTING 1 1/4" IPE WOOD, DOUBLE GROOVED, HUNG HORIZONTALLY WITH IPE CUP FASTENERS, REFINISH</li> <li>4. TOOLED JOINTS.</li> </ol>
<p><b>H1</b>                  NEW INTERIOR PT WOOD STUD WALL</p>		<ol style="list-style-type: none"> <li>1. NEW 2X4 P.T. WOOD STUD @ 24" O.C.</li> <li>2. SOUND BATT INSULATION, AS REQUIRED.</li> <li>3. 1/2" GYPSUM BOARD.</li> </ol>	<p><b>H</b>                  NEW INTERIOR PT WOOD STUD WALL /                  WALL / FRP</p>		<ol style="list-style-type: none"> <li>1. NEW 2X4 P.T. WOOD STUD @ 24" O.C.</li> <li>2. SOUND BATT INSULATION, AS REQUIRED.</li> <li>3. 1/2" GYPSUM BOARD.</li> <li>4. FIBERGLASS REINFORCED PLASTIC PANELS</li> </ol>
<p><b>I</b>                  NEW HARDIE ARTISAN LAP SIDING /                  FRP</p>		<ol style="list-style-type: none"> <li>1. NEW 1/2" GYPSUM BOARD.</li> <li>1A. FIBERGLASS REINFORCED PLASTIC PANELS.</li> <li>2. NEW 1"x1" PRESSURE TREATED FURRING STRIPS AT 12" O.C.</li> <li>3. NEW 1" CONTINUOUS RIGID INSULATION.</li> <li>4. NEW 8" MASONRY UNIT WALL</li> <li>5. NEW 7 1/4" HARDIE ARTISAN LAP SIDING INSTALLED AT 1 1/4" OVERLAP.</li> <li>6. NEW 1" x 1" PRESSURE TREATED FURRING STRIPS @ 16" O.C.</li> <li>7. NEW HARDIE WRAP WEATHER BARRIER.</li> </ol>	<p><b>J</b>                  EXISTING MASONRY WALL / NEW                  FURRING &amp; GYPSUM BOARD</p>		<ol style="list-style-type: none"> <li>1. NEW 1/2" GYPSUM BOARD</li> <li>2. NEW 1"x1" PRESSURE TREATED FURRING STRIPS AT 12" O.C.</li> <li>3. NEW 1" CONTINUOUS RIGID INSULATION.</li> <li>4. EXISTING 8" MASONRY UNIT WALL (REMOVE EXISTING EXTERIOR LAP SIDING AND FURRING).</li> </ol>

<p><b>FIGURE 703.2.4</b> INTERNATIONAL SYMBOL OF ACCESS FOR PROTRUDING OBJECTS</p> <p><b>FIGURE 703.2.5</b> VOLUME-CONTROLLED TELEPHONE</p> <p><b>FIGURE 703.2.2</b> INTERNATIONAL SYMBOL OF HEARING</p> <p><b>FIGURE 703.2.1</b> INTERNATIONAL SYMBOL OF ACCESSIBILITY</p>	<p><b>FIGURE 300.2.1</b> AREA OF REFUGE</p> <p><b>FIGURE 300.2.2</b> HEIGHT OF CHANGES IN LEVEL ABOVE FLOOR OF GROUND</p> <p><b>FIGURE 300.2.3</b> HEIGHT OF CHANGES IN LEVEL ABOVE FLOOR OF GROUND</p>	<p><b>FIGURE 300.2.4</b> AREA OF REFUGE</p> <p><b>FIGURE 300.2.5</b> HEIGHT OF CHANGES IN LEVEL ABOVE FLOOR OF GROUND</p> <p><b>FIGURE 300.2.6</b> HEIGHT OF CHANGES IN LEVEL ABOVE FLOOR OF GROUND</p>	<p><b>FIGURE 300.2.7</b> MANEUVERING CLEARANCE IN AN ACCESSIBLE FORWARD APPROACH</p> <p><b>FIGURE 300.2.8</b> MANEUVERING CLEARANCE IN AN ACCESSIBLE PARALLEL APPROACH</p> <p><b>FIGURE 300.2.9</b> MANEUVERING CLEARANCE IN AN ACCESSIBLE SIDE APPROACH</p>	<p><b>FIGURE 300.2.10</b> 360 CLEAR GROUND SPACE</p> <p><b>FIGURE 300.2.11</b> 50% CLEAR GROUND SPACE</p>	<p><b>FIGURE 300.2.12</b> SIZE OF WHEELCHAIR TURNING SPACE (EXISTING BUILDINGS)</p> <p><b>FIGURE 300.2.13</b> SIZE OF WHEELCHAIR TURNING SPACE (NEW CONSTRUCTION)</p>	<p><b>FIGURE 300.2.14</b> SIZE OF WHEELCHAIR TURNING SPACE (EXISTING BUILDINGS)</p> <p><b>FIGURE 300.2.15</b> SIZE OF WHEELCHAIR TURNING SPACE (NEW CONSTRUCTION)</p>	<p><b>FIGURE 300.2.16</b> SIZE OF WHEELCHAIR TURNING SPACE (EXISTING BUILDINGS)</p> <p><b>FIGURE 300.2.17</b> SIZE OF WHEELCHAIR TURNING SPACE (NEW CONSTRUCTION)</p>
<p><b>FIGURE 403.2.1 (A)</b> 5'-0" MIN. CLEAR WIDTH OF AN ACCESSIBLE ROUTE</p> <p><b>FIGURE 403.2.1 (B)</b> 48" ACCESSIBLE ROUTE</p>	<p><b>FIGURE 403.2.2 (A)</b> 5'-0" MIN. CLEAR WIDTH OF AN ACCESSIBLE ROUTE</p> <p><b>FIGURE 403.2.2 (B)</b> 48" ACCESSIBLE ROUTE</p>	<p><b>FIGURE 403.2.3 (A)</b> 5'-0" MIN. CLEAR WIDTH OF AN ACCESSIBLE ROUTE</p> <p><b>FIGURE 403.2.3 (B)</b> 48" ACCESSIBLE ROUTE</p>	<p><b>FIGURE 403.2.4 (A)</b> 5'-0" MIN. CLEAR WIDTH OF AN ACCESSIBLE ROUTE</p> <p><b>FIGURE 403.2.4 (B)</b> 48" ACCESSIBLE ROUTE</p>	<p><b>FIGURE 403.2.5 (A)</b> 5'-0" MIN. CLEAR WIDTH OF AN ACCESSIBLE ROUTE</p> <p><b>FIGURE 403.2.5 (B)</b> 48" ACCESSIBLE ROUTE</p>	<p><b>FIGURE 403.2.6 (A)</b> 5'-0" MIN. CLEAR WIDTH OF AN ACCESSIBLE ROUTE</p> <p><b>FIGURE 403.2.6 (B)</b> 48" ACCESSIBLE ROUTE</p>	<p><b>FIGURE 403.2.7 (A)</b> 5'-0" MIN. CLEAR WIDTH OF AN ACCESSIBLE ROUTE</p> <p><b>FIGURE 403.2.7 (B)</b> 48" ACCESSIBLE ROUTE</p>	<p><b>FIGURE 403.2.8 (A)</b> 5'-0" MIN. CLEAR WIDTH OF AN ACCESSIBLE ROUTE</p> <p><b>FIGURE 403.2.8 (B)</b> 48" ACCESSIBLE ROUTE</p>
<p><b>FIGURE 403.2.9 (A)</b> 5'-0" MIN. CLEAR WIDTH OF AN ACCESSIBLE ROUTE</p> <p><b>FIGURE 403.2.9 (B)</b> 48" ACCESSIBLE ROUTE</p>	<p><b>FIGURE 403.2.10 (A)</b> 5'-0" MIN. CLEAR WIDTH OF AN ACCESSIBLE ROUTE</p> <p><b>FIGURE 403.2.10 (B)</b> 48" ACCESSIBLE ROUTE</p>	<p><b>FIGURE 403.2.11 (A)</b> 5'-0" MIN. CLEAR WIDTH OF AN ACCESSIBLE ROUTE</p> <p><b>FIGURE 403.2.11 (B)</b> 48" ACCESSIBLE ROUTE</p>	<p><b>FIGURE 403.2.12 (A)</b> 5'-0" MIN. CLEAR WIDTH OF AN ACCESSIBLE ROUTE</p> <p><b>FIGURE 403.2.12 (B)</b> 48" ACCESSIBLE ROUTE</p>	<p><b>FIGURE 403.2.13 (A)</b> 5'-0" MIN. CLEAR WIDTH OF AN ACCESSIBLE ROUTE</p> <p><b>FIGURE 403.2.13 (B)</b> 48" ACCESSIBLE ROUTE</p>	<p><b>FIGURE 403.2.14 (A)</b> 5'-0" MIN. CLEAR WIDTH OF AN ACCESSIBLE ROUTE</p> <p><b>FIGURE 403.2.14 (B)</b> 48" ACCESSIBLE ROUTE</p>	<p><b>FIGURE 403.2.15 (A)</b> 5'-0" MIN. CLEAR WIDTH OF AN ACCESSIBLE ROUTE</p> <p><b>FIGURE 403.2.15 (B)</b> 48" ACCESSIBLE ROUTE</p>	<p><b>FIGURE 403.2.16 (A)</b> 5'-0" MIN. CLEAR WIDTH OF AN ACCESSIBLE ROUTE</p> <p><b>FIGURE 403.2.16 (B)</b> 48" ACCESSIBLE ROUTE</p>
<p><b>FIGURE 403.2.17 (A)</b> 5'-0" MIN. CLEAR WIDTH OF AN ACCESSIBLE ROUTE</p> <p><b>FIGURE 403.2.17 (B)</b> 48" ACCESSIBLE ROUTE</p>	<p><b>FIGURE 403.2.18 (A)</b> 5'-0" MIN. CLEAR WIDTH OF AN ACCESSIBLE ROUTE</p> <p><b>FIGURE 403.2.18 (B)</b> 48" ACCESSIBLE ROUTE</p>	<p><b>FIGURE 403.2.19 (A)</b> 5'-0" MIN. CLEAR WIDTH OF AN ACCESSIBLE ROUTE</p> <p><b>FIGURE 403.2.19 (B)</b> 48" ACCESSIBLE ROUTE</p>	<p><b>FIGURE 403.2.20 (A)</b> 5'-0" MIN. CLEAR WIDTH OF AN ACCESSIBLE ROUTE</p> <p><b>FIGURE 403.2.20 (B)</b> 48" ACCESSIBLE ROUTE</p>	<p><b>FIGURE 403.2.21 (A)</b> 5'-0" MIN. CLEAR WIDTH OF AN ACCESSIBLE ROUTE</p> <p><b>FIGURE 403.2.21 (B)</b> 48" ACCESSIBLE ROUTE</p>	<p><b>FIGURE 403.2.22 (A)</b> 5'-0" MIN. CLEAR WIDTH OF AN ACCESSIBLE ROUTE</p> <p><b>FIGURE 403.2.22 (B)</b> 48" ACCESSIBLE ROUTE</p>	<p><b>FIGURE 403.2.23 (A)</b> 5'-0" MIN. CLEAR WIDTH OF AN ACCESSIBLE ROUTE</p> <p><b>FIGURE 403.2.23 (B)</b> 48" ACCESSIBLE ROUTE</p>	<p><b>FIGURE 403.2.24 (A)</b> 5'-0" MIN. CLEAR WIDTH OF AN ACCESSIBLE ROUTE</p> <p><b>FIGURE 403.2.24 (B)</b> 48" ACCESSIBLE ROUTE</p>
<p><b>FIGURE 403.2.25 (A)</b> 5'-0" MIN. CLEAR WIDTH OF AN ACCESSIBLE ROUTE</p> <p><b>FIGURE 403.2.25 (B)</b> 48" ACCESSIBLE ROUTE</p>	<p><b>FIGURE 403.2.26 (A)</b> 5'-0" MIN. CLEAR WIDTH OF AN ACCESSIBLE ROUTE</p> <p><b>FIGURE 403.2.26 (B)</b> 48" ACCESSIBLE ROUTE</p>	<p><b>FIGURE 403.2.27 (A)</b> 5'-0" MIN. CLEAR WIDTH OF AN ACCESSIBLE ROUTE</p> <p><b>FIGURE 403.2.27 (B)</b> 48" ACCESSIBLE ROUTE</p>	<p><b>FIGURE 403.2.28 (A)</b> 5'-0" MIN. CLEAR WIDTH OF AN ACCESSIBLE ROUTE</p> <p><b>FIGURE 403.2.28 (B)</b> 48" ACCESSIBLE ROUTE</p>	<p><b>FIGURE 403.2.29 (A)</b> 5'-0" MIN. CLEAR WIDTH OF AN ACCESSIBLE ROUTE</p> <p><b>FIGURE 403.2.29 (B)</b> 48" ACCESSIBLE ROUTE</p>	<p><b>FIGURE 403.2.30 (A)</b> 5'-0" MIN. CLEAR WIDTH OF AN ACCESSIBLE ROUTE</p> <p><b>FIGURE 403.2.30 (B)</b> 48" ACCESSIBLE ROUTE</p>	<p><b>FIGURE 403.2.31 (A)</b> 5'-0" MIN. CLEAR WIDTH OF AN ACCESSIBLE ROUTE</p> <p><b>FIGURE 403.2.31 (B)</b> 48" ACCESSIBLE ROUTE</p>	<p><b>FIGURE 403.2.32 (A)</b> 5'-0" MIN. CLEAR WIDTH OF AN ACCESSIBLE ROUTE</p> <p><b>FIGURE 403.2.32 (B)</b> 48" ACCESSIBLE ROUTE</p>
<p><b>FIGURE 403.2.33 (A)</b> 5'-0" MIN. CLEAR WIDTH OF AN ACCESSIBLE ROUTE</p> <p><b>FIGURE 403.2.33 (B)</b> 48" ACCESSIBLE ROUTE</p>	<p><b>FIGURE 403.2.34 (A)</b> 5'-0" MIN. CLEAR WIDTH OF AN ACCESSIBLE ROUTE</p> <p><b>FIGURE 403.2.34 (B)</b> 48" ACCESSIBLE ROUTE</p>	<p><b>FIGURE 403.2.35 (A)</b> 5'-0" MIN. CLEAR WIDTH OF AN ACCESSIBLE ROUTE</p> <p><b>FIGURE 403.2.35 (B)</b> 48" ACCESSIBLE ROUTE</p>	<p><b>FIGURE 403.2.36 (A)</b> 5'-0" MIN. CLEAR WIDTH OF AN ACCESSIBLE ROUTE</p> <p><b>FIGURE 403.2.36 (B)</b> 48" ACCESSIBLE ROUTE</p>	<p><b>FIGURE 403.2.37 (A)</b> 5'-0" MIN. CLEAR WIDTH OF AN ACCESSIBLE ROUTE</p> <p><b>FIGURE 403.2.37 (B)</b> 48" ACCESSIBLE ROUTE</p>	<p><b>FIGURE 403.2.38 (A)</b> 5'-0" MIN. CLEAR WIDTH OF AN ACCESSIBLE ROUTE</p> <p><b>FIGURE 403.2.38 (B)</b> 48" ACCESSIBLE ROUTE</p>	<p><b>FIGURE 403.2.39 (A)</b> 5'-0" MIN. CLEAR WIDTH OF AN ACCESSIBLE ROUTE</p> <p><b>FIGURE 403.2.39 (B)</b> 48" ACCESSIBLE ROUTE</p>	<p><b>FIGURE 403.2.40 (A)</b> 5'-0" MIN. CLEAR WIDTH OF AN ACCESSIBLE ROUTE</p> <p><b>FIGURE 403.2.40 (B)</b> 48" ACCESSIBLE ROUTE</p>

**FBC - ANSI 117 Requirements**  
 SCALE: 1/4" = 1'-0"

307 PROTRUDING OBJECTS

308 REACH

309 FLOOR OR GROUND SURFACES

310 HEIGHT OF CHANGES IN LEVEL ABOVE FLOOR OF GROUND

311 HEIGHT OF CHANGES IN LEVEL ABOVE FLOOR OF GROUND

312 AREA OF REFUGE

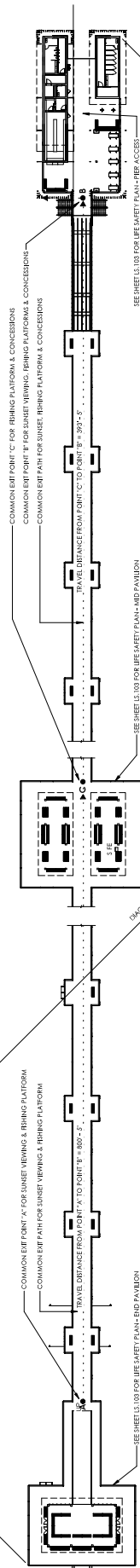
703.201C



LIFE SAFETY LEGEND

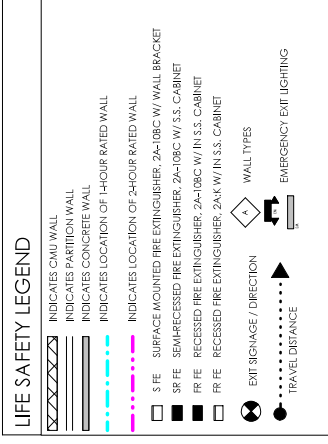
- INDICATES CMU WALL
- INDICATES PARTITION WALL
- INDICATES CONCRETE WALL
- INDICATES LOCATION OF 1-HOUR RATED WALL
- INDICATES LOCATION OF 2-HOUR RATED WALL
- 5 FE SURFACE MOUNTED FIRE EXTINGUISHER, 2A-10BC W/ WALL BRACKET
- 3R FE SURFACE MOUNTED FIRE EXTINGUISHER, 2A-10BC W/ S.S. CABINET
- RR FE RECESSED FIRE EXTINGUISHER, 2A-10BC W/ IN S.S. CABINET
- RR FE RECESSED FIRE EXTINGUISHER, 2A-K W/ IN S.S. CABINET
- EXIT SIGNAGE / DIRECTION
- WALL TYPES
- EMERGENCY EXIT LIGHTING
- TRAVEL DISTANCE

NOTE: COASTAL EXTERIOR CABINET TO BE USED FOR FIRE EXTINGUISHER CABINETS

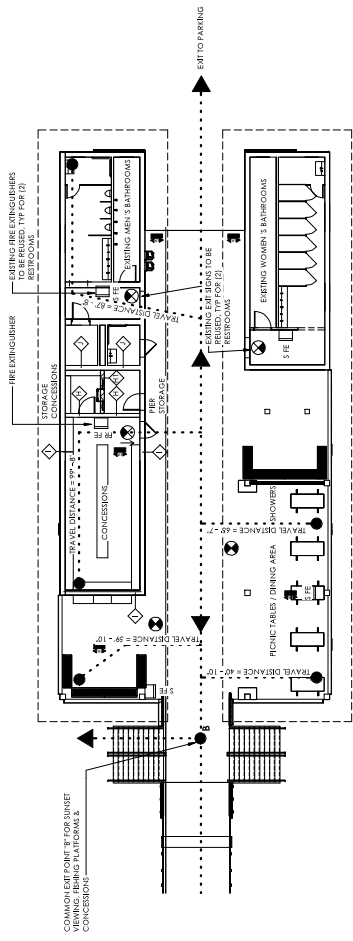
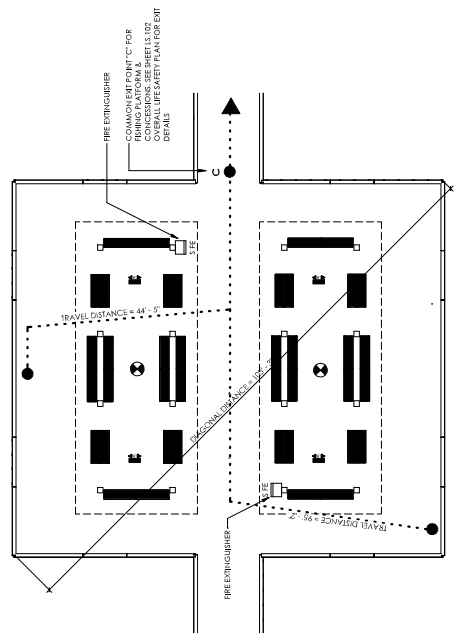
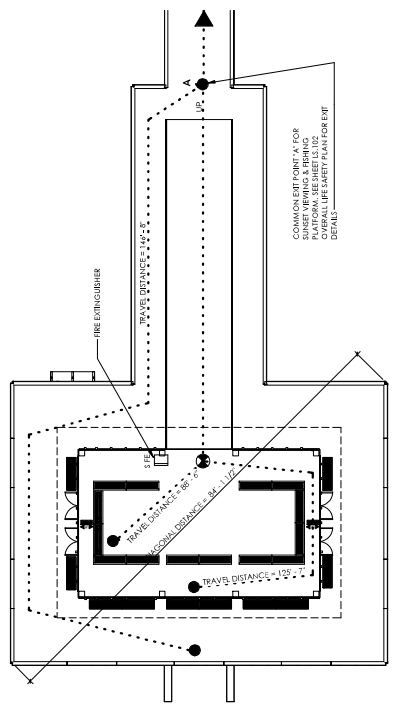


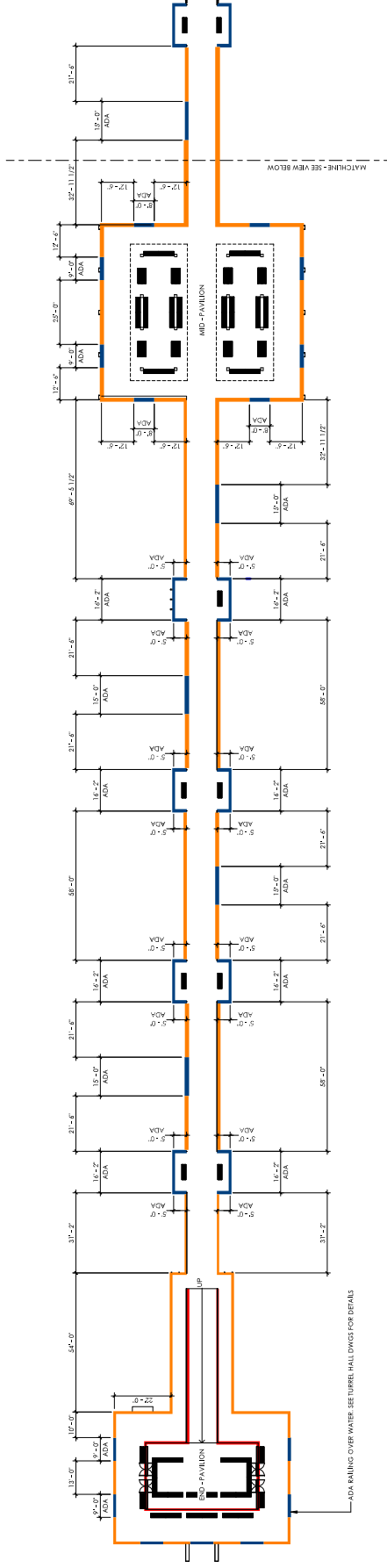
1 OVERALL LIFE SAFETY PLAN

SCALE: 1/32" = 1'-0"

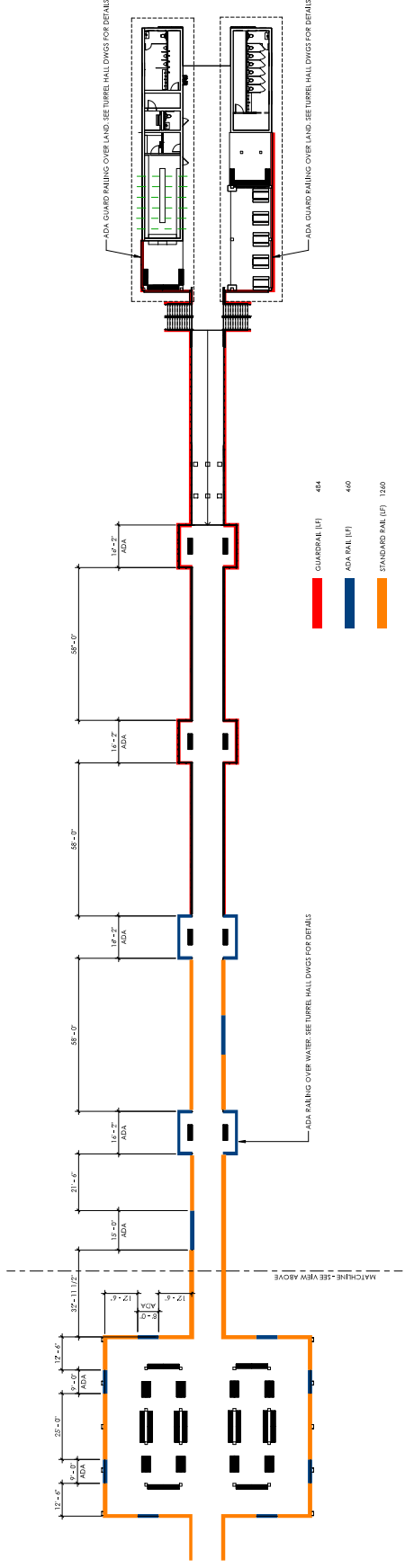


NOTE: COASTAL EXTERIOR CABINET TO BE USED FOR FIRE EXTINGUISHER CABINETS

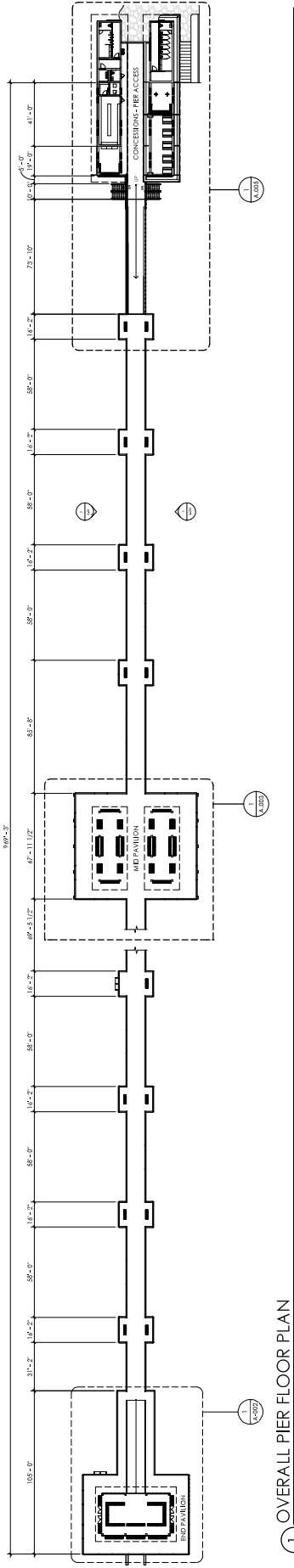




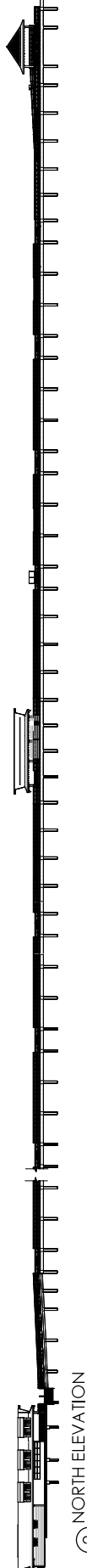
1 ADA RAILING - End & Mid Pavilion  
 SCALE: 1" = 20'-0"



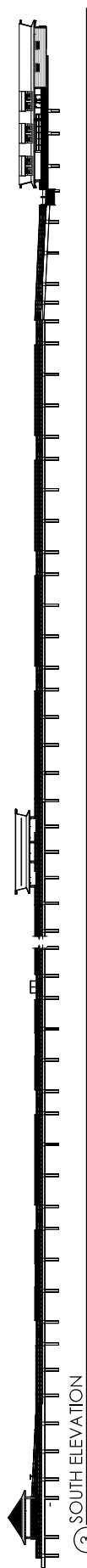
2 ADA RAILING - Mid Pavilion & Pier Access  
 SCALE: 1" = 20'-0"



1 OVERALL PIER FLOOR PLAN  
SCALE: 1/32" = 1'-0"



2 NORTH ELEVATION  
SCALE: 1/32" = 1'-0"



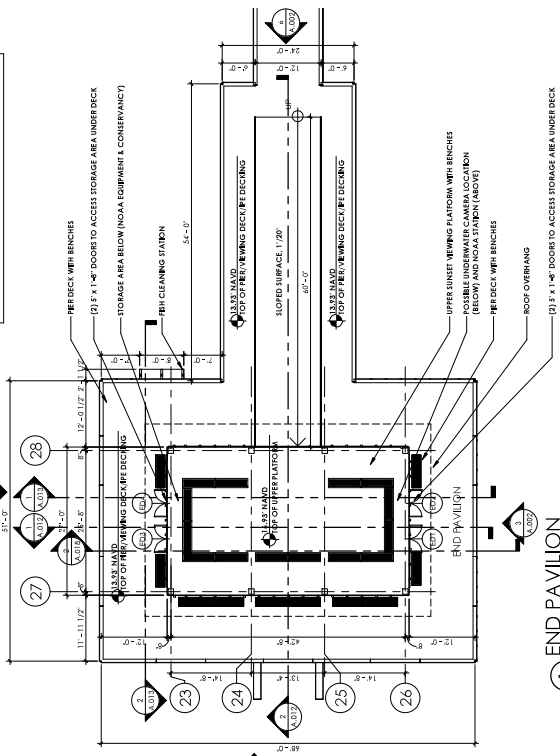
3 SOUTH ELEVATION  
SCALE: 1/32" = 1'-0"

**SITE ELEVATION INFORMATION**

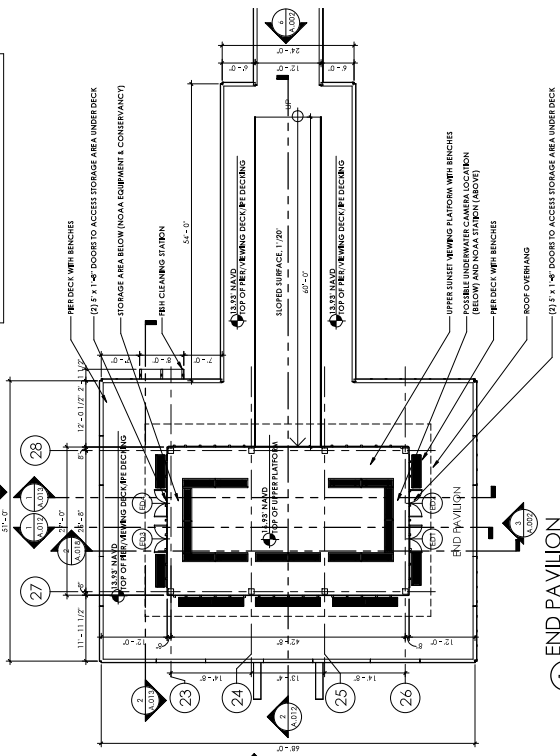
RAW ELEV.	VECS (2012 / 1/ET) (2019)
AVG. CROWN OF ROAD	N/A (10/1/24 / 1/ET) (2019)
DESIGN FLOOD ELEVATION	12' NAVD (2019)
MID-PAVILION / CONCESSIONS AND STORAGE	13.97' NAVD
END-PAVILION / SUNSET VIEWING DECK	16.97' NAVD
PLATFORM SURROUNDING END PAVILION	12.07' NAVD

-EXISTING FLOOD VENTS IN INTERIORS TO REMAIN.  
-DRY FLOODPROOF CONCESSIONS AND PIER STORAGE (FLOOD PANELS)

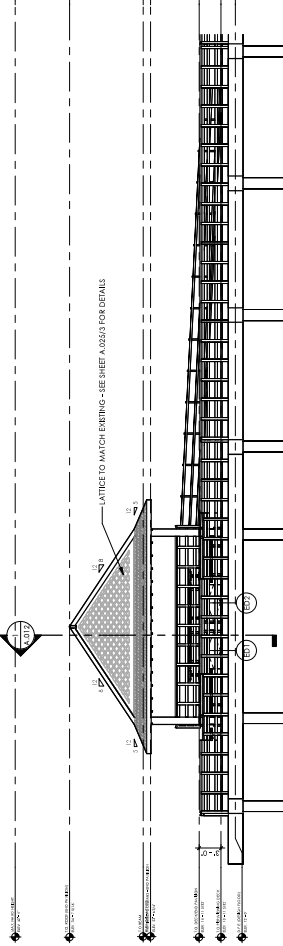
SITE ELEVATION INFORMATION  
1/18



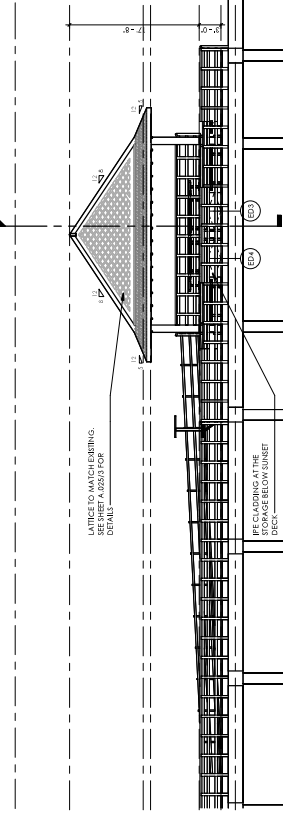
② 3D VIEW - END PAVILION  
 NTS



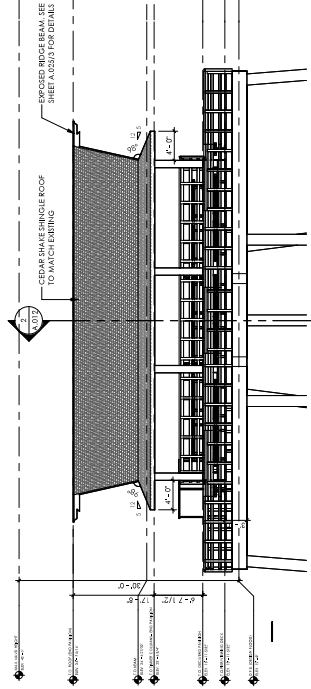
① END PAVILION  
 SCALE: 3/8" = 1'-0"



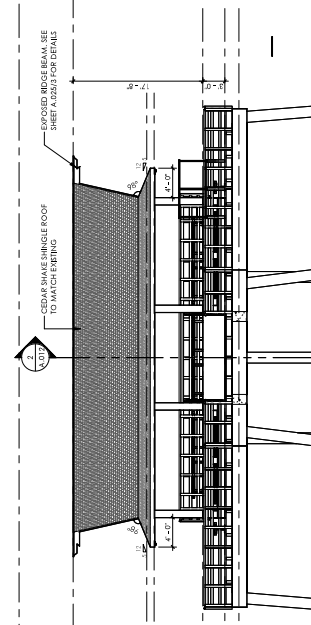
③ SOUTH ELEVATION - END PAVILION  
 SCALE: 1/8" = 1'-0"



④ NORTH ELEVATION - END PAVILION  
 SCALE: 1/8" = 1'-0"

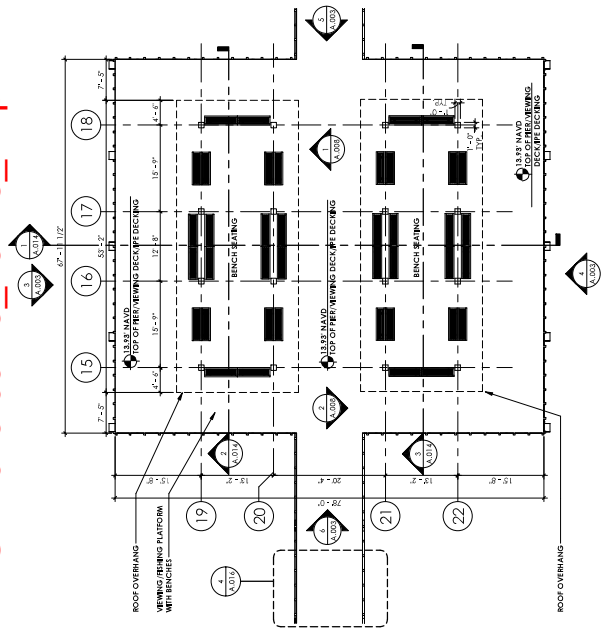


⑤ WEST ELEVATION - END PAVILION  
 SCALE: 1/8" = 1'-0"

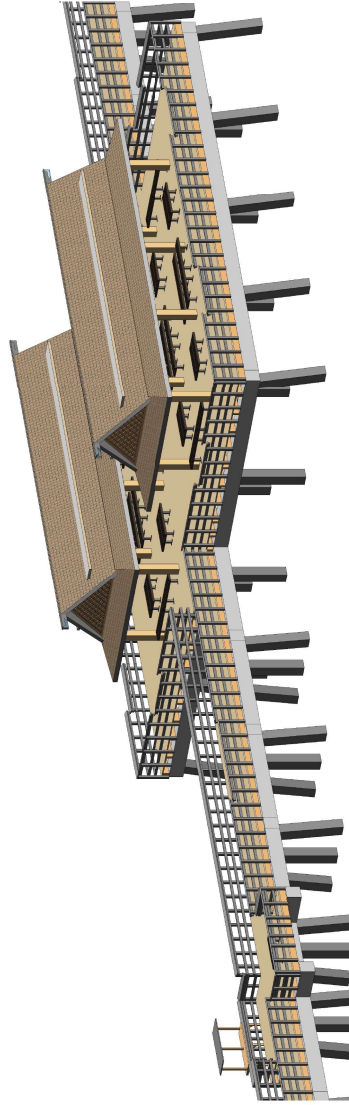


⑥ EAST ELEVATION - END PAVILION  
 SCALE: 1/8" = 1'-0"

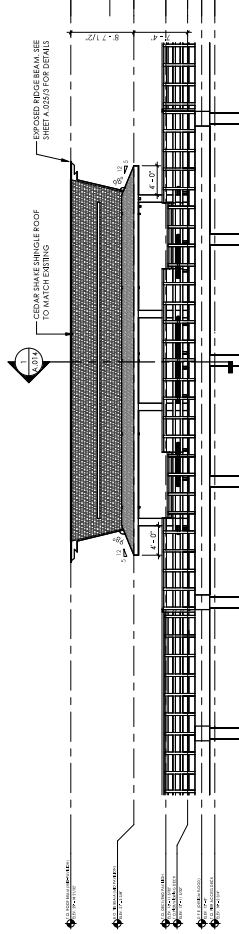




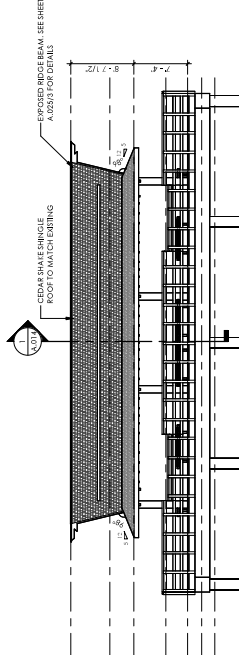
1 MID-PAVILION  
SCALE: 3/32" = 1'-0"



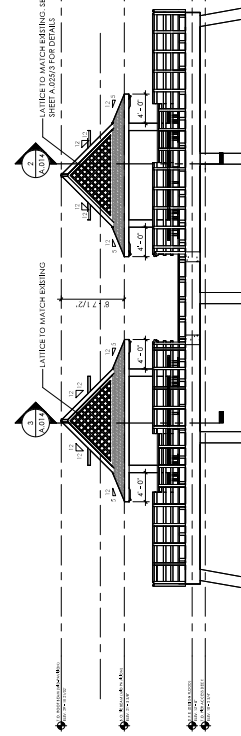
2 3D - MID-PAVILION  
NTS



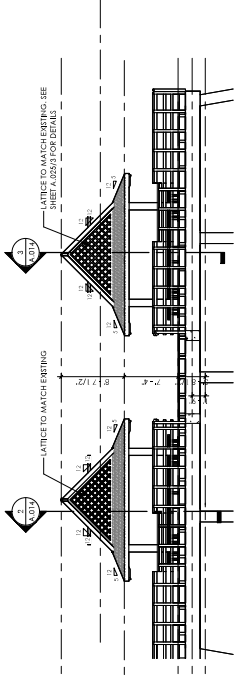
3 NORTH ELEVATION - MID PAVILION  
SCALE: 1/8" = 1'-0"



4 SOUTH ELEVATION - MID PAVILION  
SCALE: 1/8" = 1'-0"



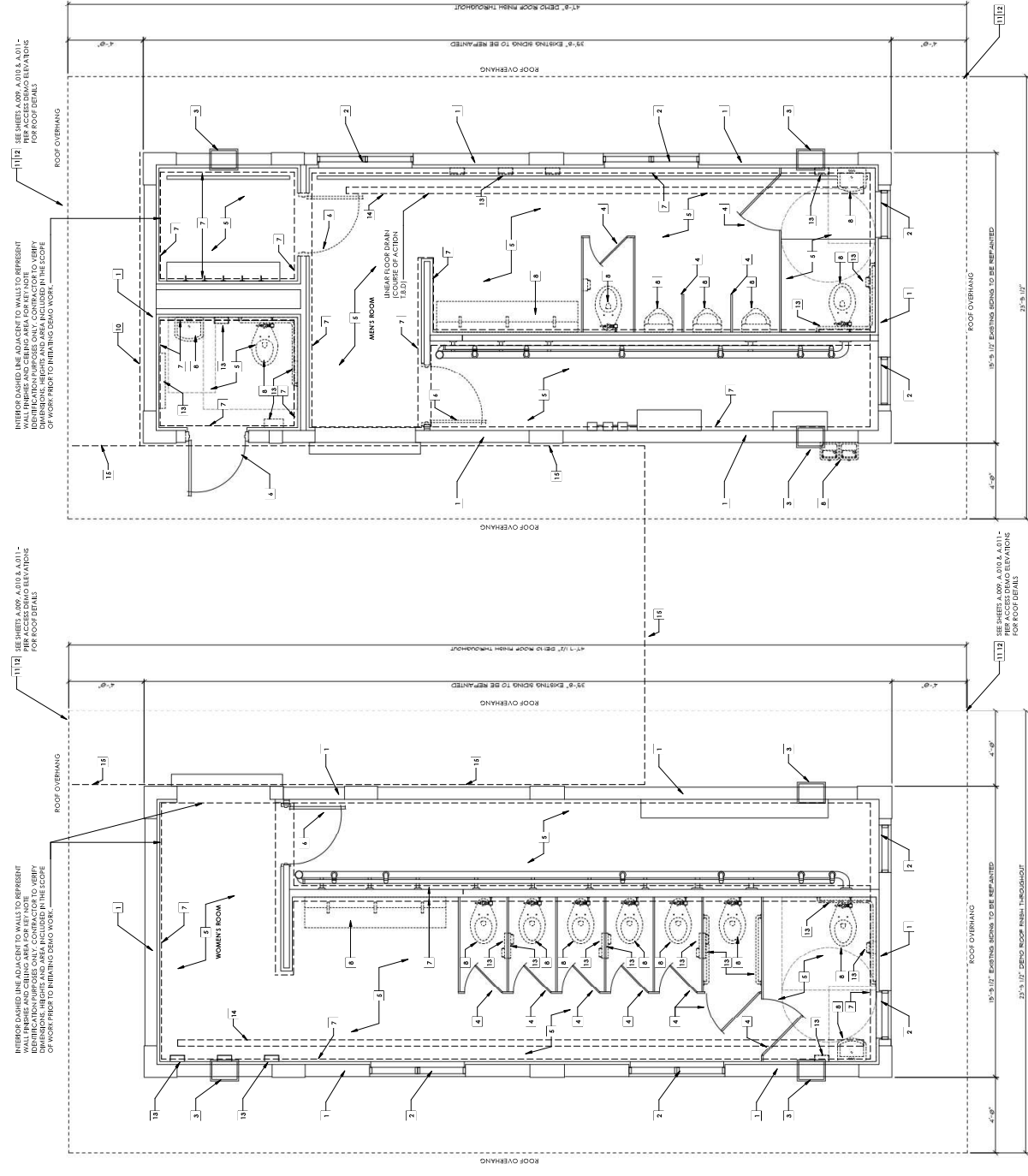
5 EAST ELEVATION - MID PAVILION  
SCALE: 1/8" = 1'-0"



6 WEST ELEVATION - MID PAVILION  
SCALE: 1/8" = 1'-0"

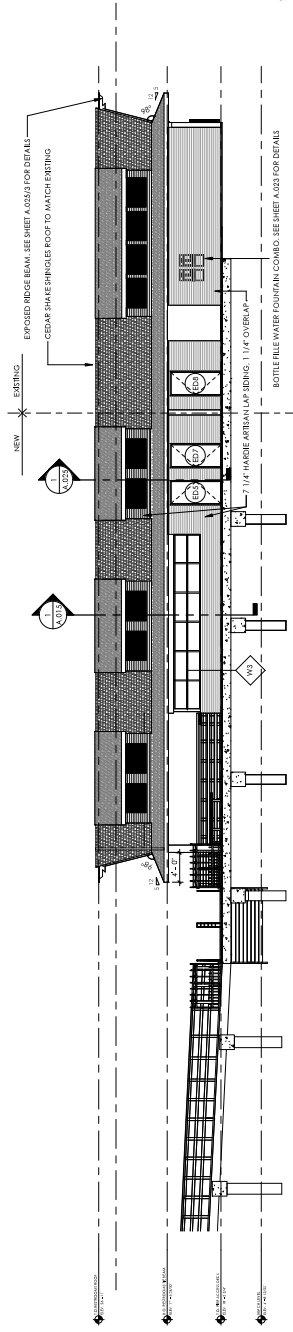
- DEMOLITION PLAN NOTES**
- EXISTING WALL STRUCTURE TO REMAIN.
  - EXISTING WINDOWS AND CEILING VENTS TO REMAIN (U.O.N). VERIFY VENTS FOR FUNCTIONALITY AND OVERALL CONDITION.
  - EXISTING FLOOR VENTS TO REMAIN.
  - EXISTING TOILET PARTITION TO REMAIN.
  - REMOVE FLOOR FINISHES COMPLETE.
  - REMOVE DOOR AND FRAME COMPLETE.
  - REMOVE INTERIOR WALL FINISHES AND ASSOCIATED BACKING BELOW WAINSCOT COMPLETE (I.B.D.)
  - REMOVE PLUMBING FIXTURES COMPLETE (I.B.D.)
  - NOT USED.
  - REMOVE EXISTING EXTERIOR FINISH AND ASSOCIATED BACKING CONCRETE.
  - REMOVE EXISTING ROOF SINGLES COMPLETE.
  - REMOVE EXISTING ROOF INSULATION BOARDING OF INSULATION WITH REMOVAL OF BEADY FROM POTENTIAL DAMAGE DUE TO WEATHER EXPOSURE OR UNAUTHORIZED ACCESS.
  - REMOVE BATHROOM ACCESSES COMPLETE.
  - EXISTING INTERIOR FLOOR FINISH TO BE REMOVED AND REFINISHED.
  - REMOVE EXISTING WOOD SCISSOR AND FINISH SYSTEMS RESTROOMS ON BALCONY. SEE LAYOUT BETWEEN PROPOSED DEMO AREA AND CURRENTLY EXISTING ENTRY CIRCLE REAR PROJECT I.B.D.

- GENERAL DEMOLITION NOTES**
- FOR THE DEMOLITION OF THE EXISTING PIER STRUCTURE, EXISTING PIER BUILDINGS AND STRUCTURES, INCLUDING SIGNAGE AND FIXTURES, SEE USING NUMBER DRAWINGS.



1 RESTROOMS DEMO PLAN  
 SCALE: 1/8" = 1'-0"

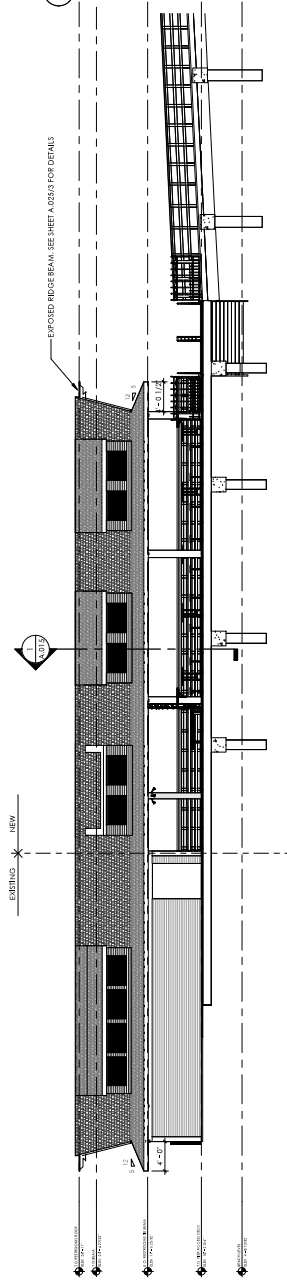




① PARTIAL SOUTH ELEVATION - CONCESSIONS OPTION A  
SCALE: 1/8" = 1'-0"

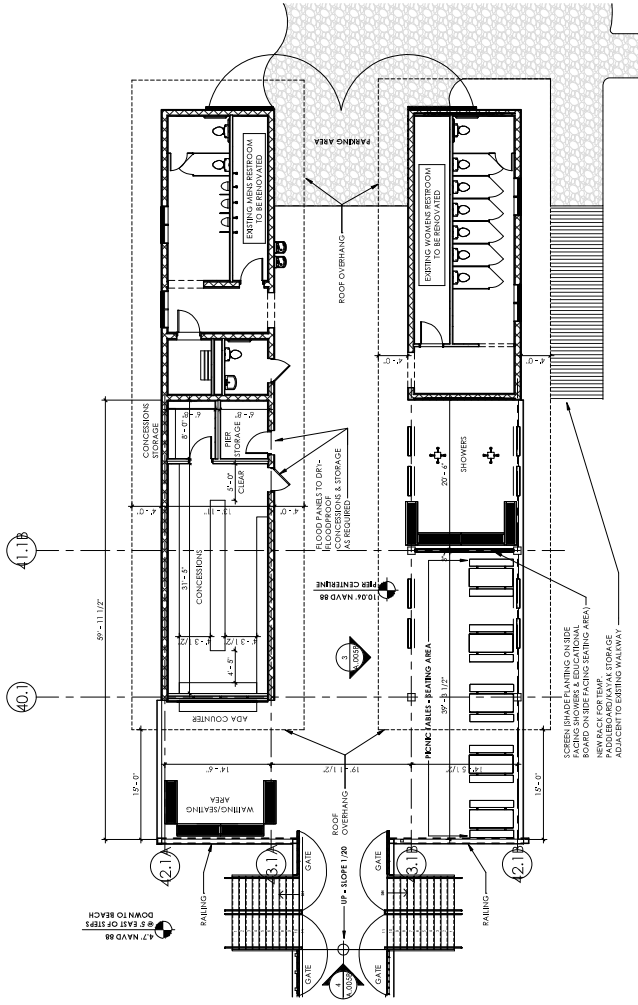


③ 3D VIEW - CONCESSIONS/PICNIC/SHOWER AREAS  
SCALE:



② PARTIAL NORTH ELEVATION - SHOWERS/SEATING AREA OPTION A  
SCALE: 1/8" = 1'-0"

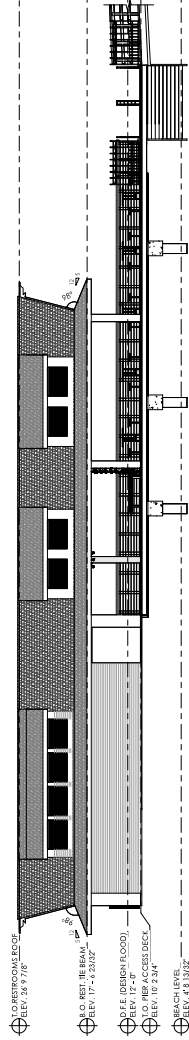




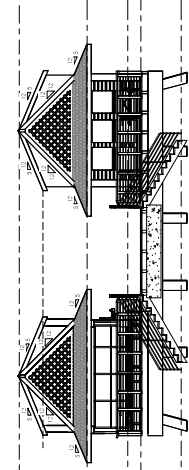
① PIER ACCESS - OPTION B  
SCALE: 1/8" = 1'-0"



② 3D VIEW - PIER ACCESS OPTION B  
SCALE:

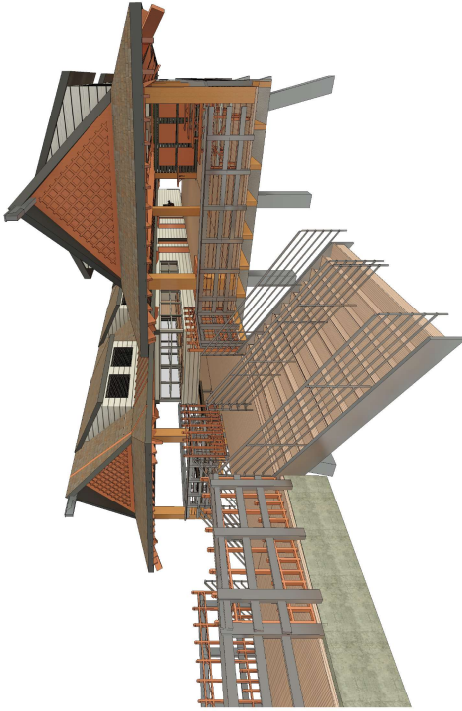


③ PICNIC AREA ELEVATION - OPTION B  
SCALE: 1/8" = 1'-0"

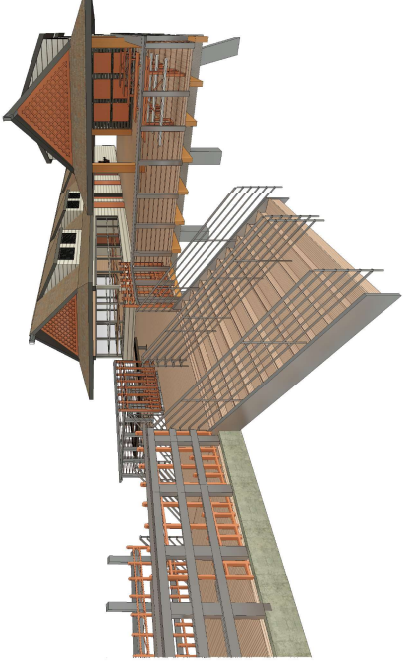


④ CONCESSIONS - PICNIC AREA ELEVATION  
SCALE: 1/8" = 1'-0"





① 3D VIEW - 1) PICNIC AREA OPTION A  
SCALE



② 3D VIEW - 1) PICNIC AREA OPTION B  
SCALE



③ 3D VIEW - 2) PICNIC AREA OPTION A  
SCALE



④ 3D VIEW - 2) PICNIC AREA OPTION B  
SCALE



⑤ 3D VIEW - 3) PICNIC AREA OPTION A  
SCALE



⑥ 3D VIEW - 3) PICNIC AREA OPTION B  
SCALE

10000 W. GULF BLVD. SUITE 100  
 NAPLES, FL 34108  
 TEL: 239.438.8800  
 WWW.MHRARCHITECTURE.COM

**NAPLES PIER RECONSTRUCTION**  
 25 12th Ave S., Naples FL 34102

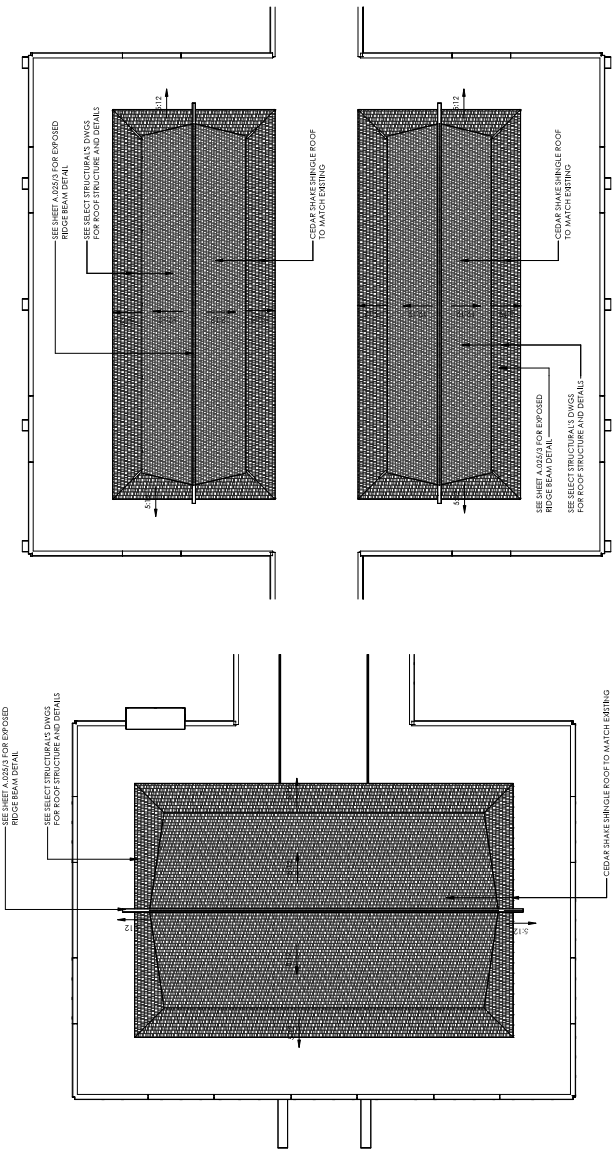
NOT FOR CONSTRUCTION  
 FLORIDA SEAL  
 REG. AS 1937

SHEET SIZE DATE  
 09/25/2023

ROOF PLAN

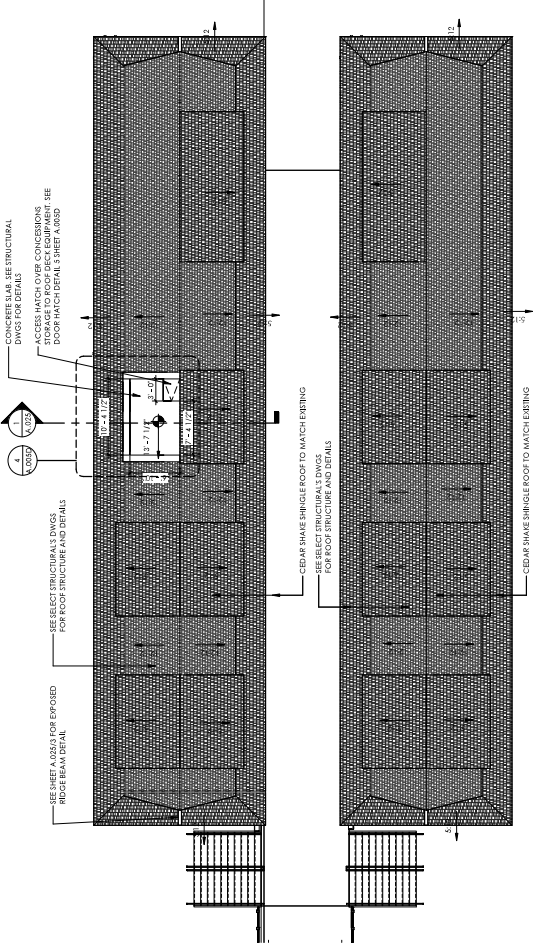
PHASE CD  
 PR NO 23118

**A.005D**

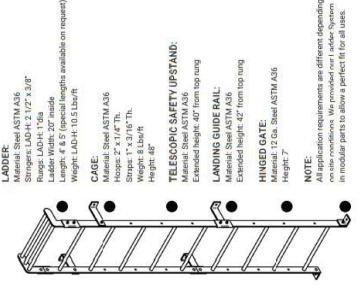


1 END PAVILION - ROOF PLAN  
 SCALE: 1/8" = 1'-0"

2 MID PAVILION - ROOF PLAN  
 SCALE: 1/8" = 1'-0"

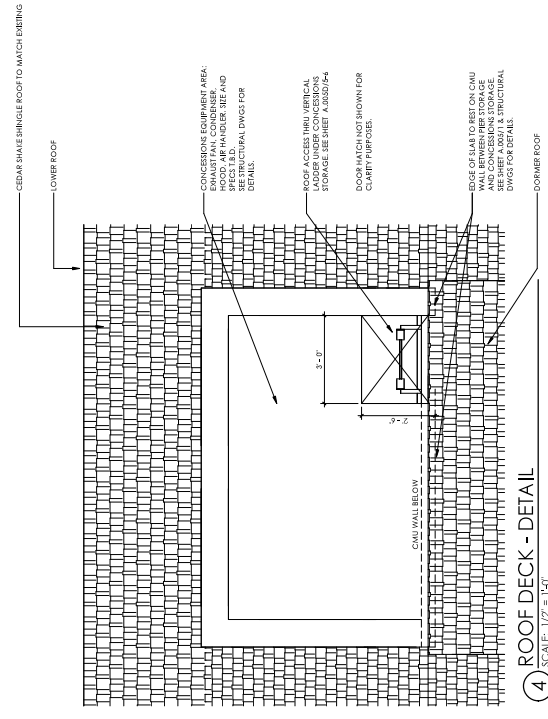


3 PIER ACCESS - ROOF PLAN  
 SCALE: 1/8" = 1'-0"



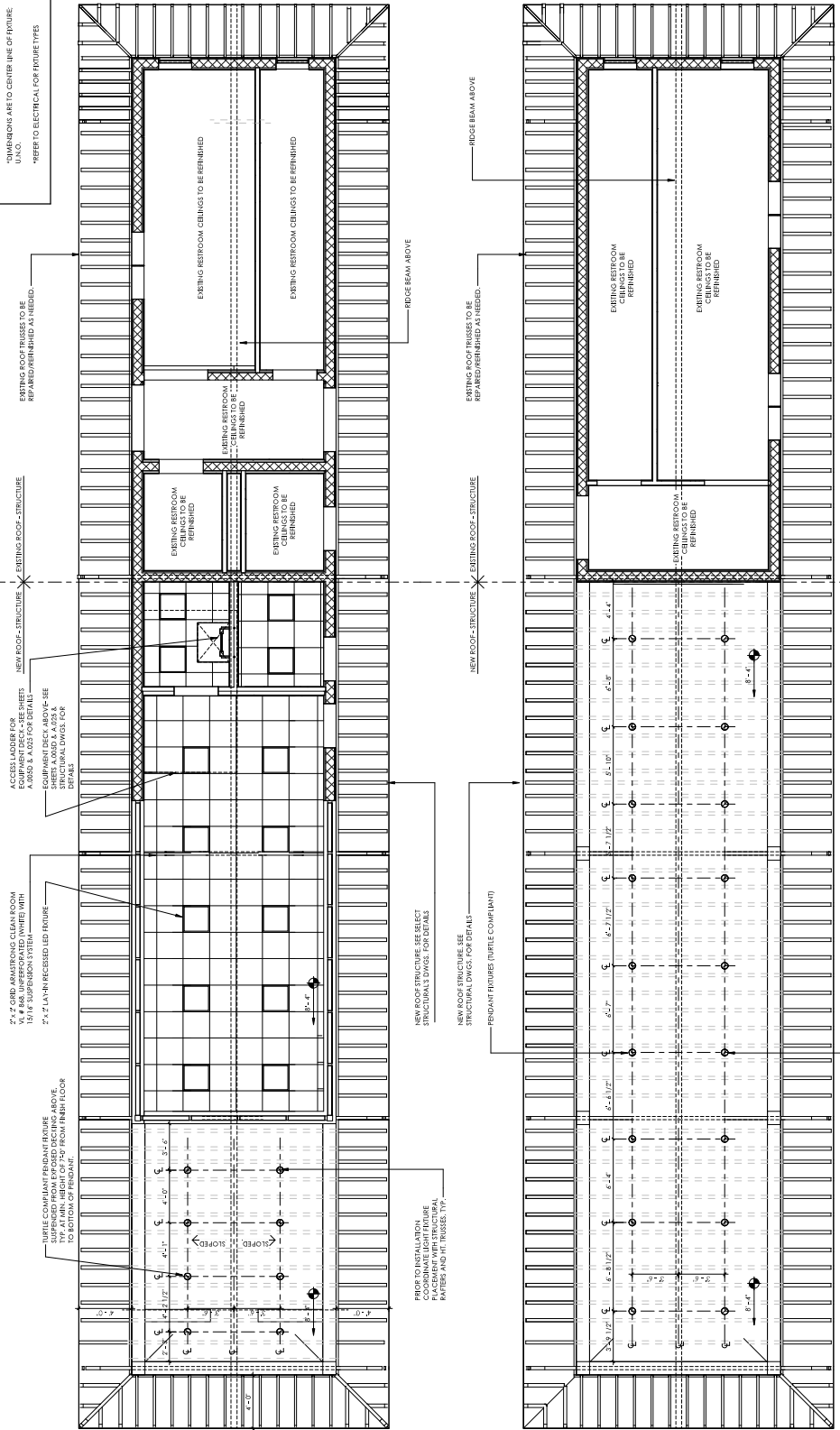
6 LADDER DETAIL

5 ROOF HATCH DETAIL



4 ROOF DECK - DETAIL  
 SCALE: 1/2" = 1'-0"

- RCP LEGEND
- ◆ RECESSED LIGHT FIXTURE
  - ◇ J BOX
  - SURFACE MOUNT LIGHT FIXTURE - CEILING
  - SURFACE MOUNT LIGHT FIXTURE - WALL
  - SUSPENDED LIGHT FIXTURE
  - EMERGENCY LIGHT FIXTURE
  - ABOVE DOOR SURFACE MOUNTED WALL LIGHT
  - ELECTRICAL PANEL
  - RECESSED FLOOR OUTLET
  - ◆ EXTERIOR SOURCE LIGHT FIXTURE
  - UNDERCAB LIGHTING
  - DIMENSIONS ARE TO CENTER LINE OF FIXTURE UNLESS NOTED
  - REFER TO ELECTRICAL FOR FIXTURE TYPES

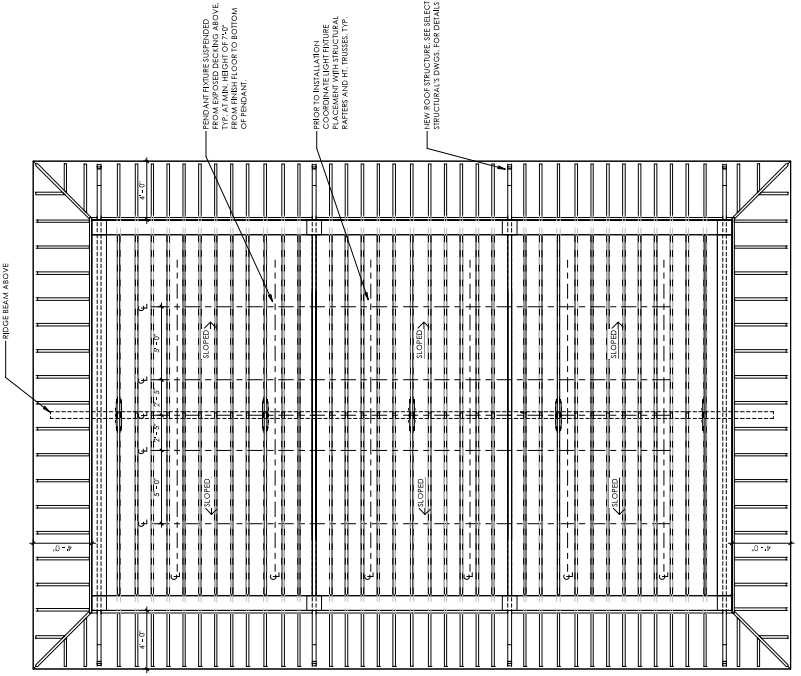
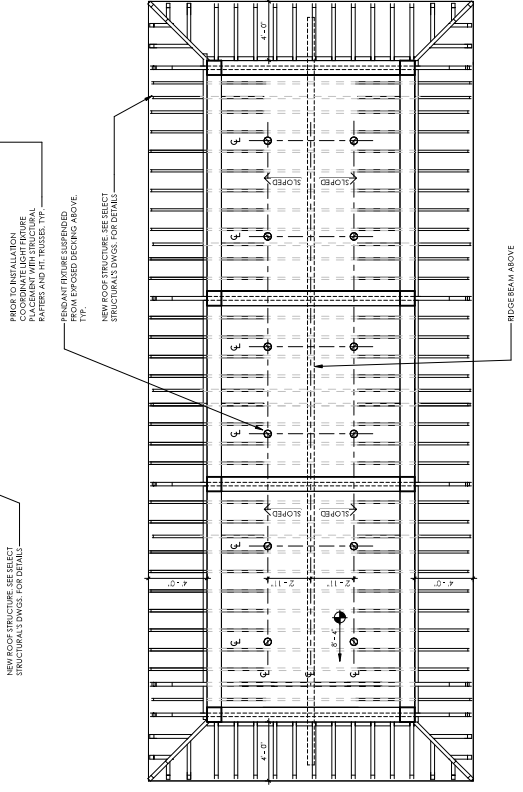
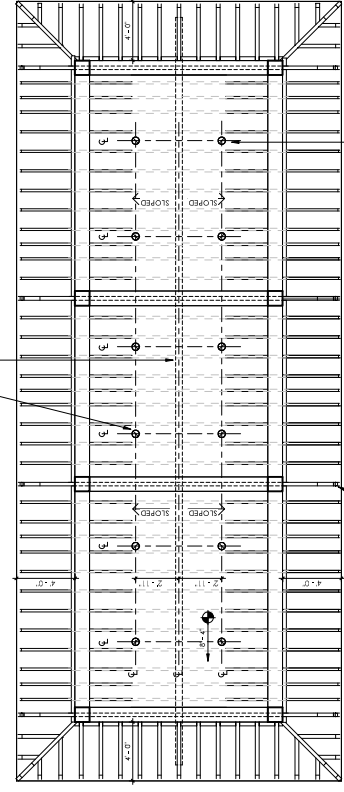


PROVIDE ALL NEW AND EXISTING LIGHT FIXTURE PLACEMENT WITH STRUCTURAL PARTIES AND HIT TRUSSES, TYP.

1 CONCESSIONS RCP  
 SCALE: 1/4" = 1'-0"

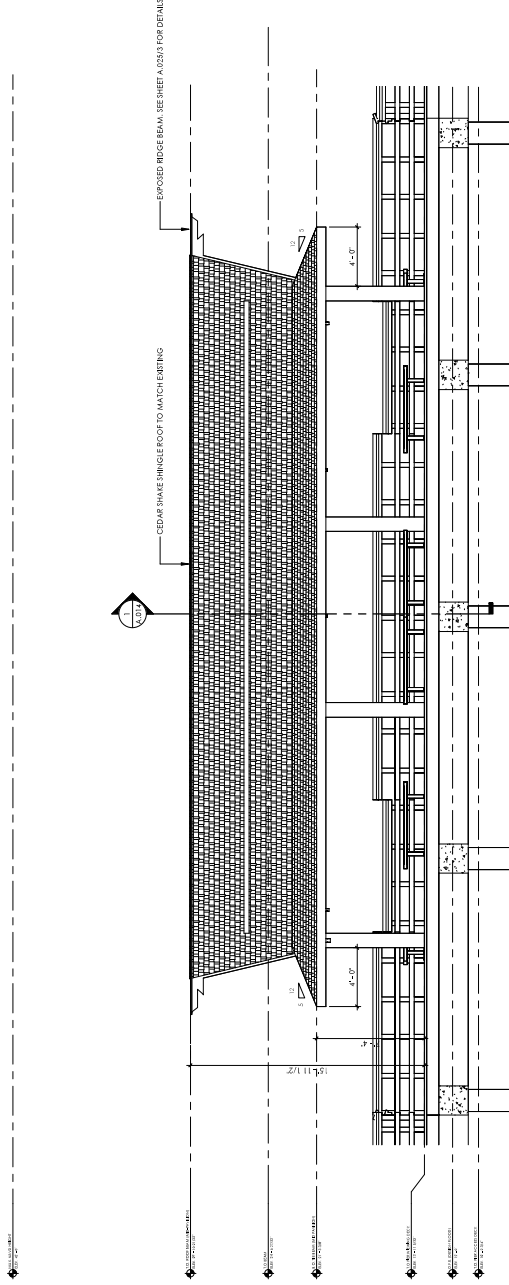


- RCP LEGEND**
- ◆ RECESSED LIGHT FIXTURE
  - ◇ J BOX
  - SURFACE MOUNT LIGHT FIXTURE - CEILING
  - SURFACE MOUNT LIGHT FIXTURE - WALL
  - SUSPENDED LIGHT FIXTURE
  - EMERGENCY LIGHT FIXTURE
  - ABOVE DOOR SURFACE MOUNTED WALL LIGHT
  - ELECTRICAL PANEL
  - RECESSED FLOOR OUTLET
  - ◇ EXTERIOR SOURCE LIGHT FIXTURE
  - UNDERCAB LIGHTING
  - DIMENSIONS ARE TO CENTER LINE OF FIXTURE UNLESS NOTED OTHERWISE
  - REFER TO ELECTRICAL FOR FIXTURE TYPES

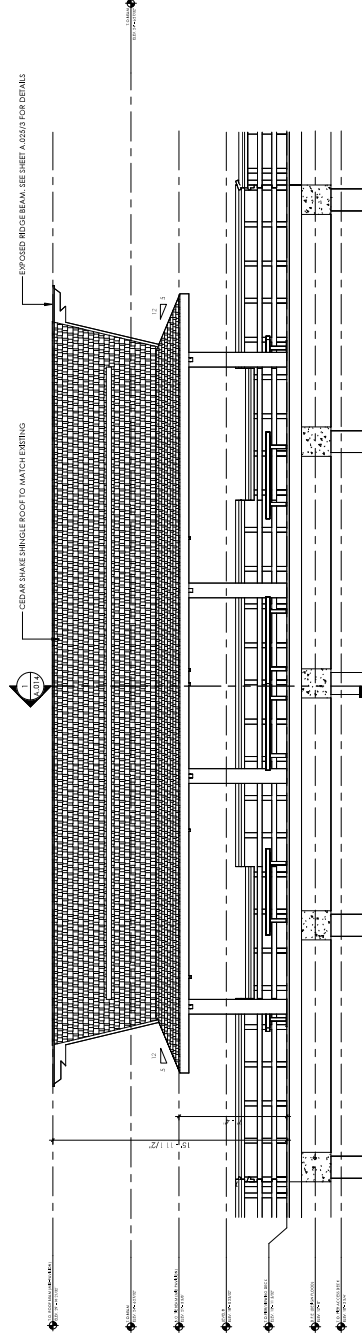


2 MID PAVILION - RCP  
 SCALE: 1/4" = 1'-0"

1 RCP - END PAVILION  
 SCALE: 1/4" = 1'-0"



① MID PAVILION NORTH ELEVATION  
SCALE: 1/4" = 1'-0"

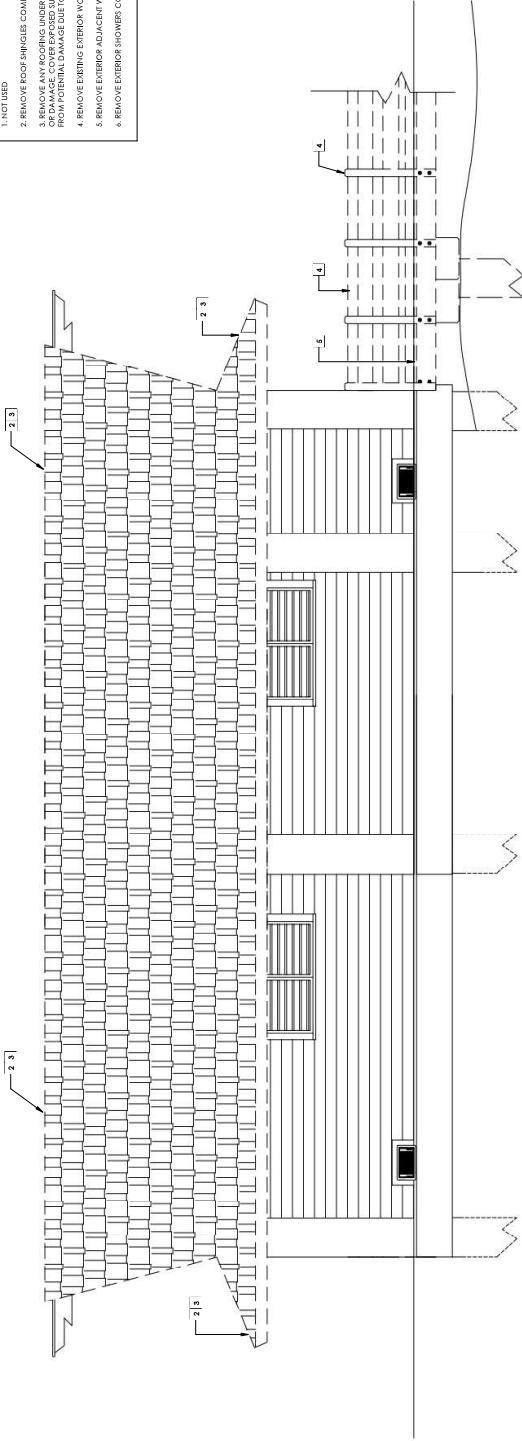


② MID PAVILION SOUTH ELEVATION  
SCALE: 1/4" = 1'-0"

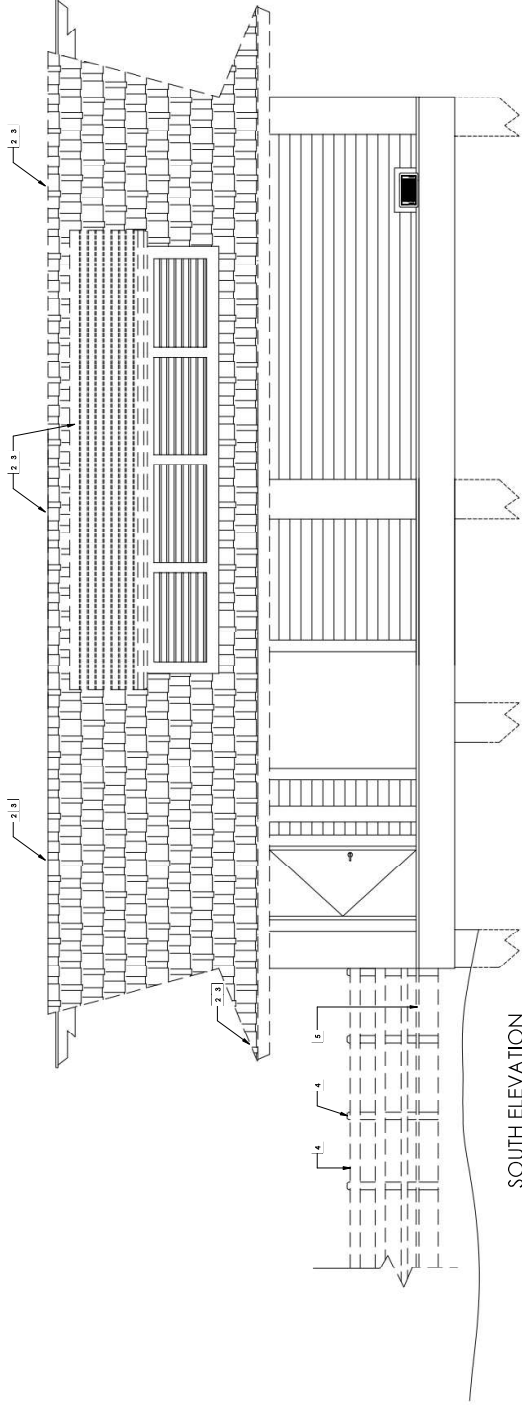


DEMOLITION ELEVATION NOTES

- 1. NOT USED
- 2. REMOVE ROOF SHINGLES COMPLETE.
- 3. REMOVE ANY ROOFING UNDERLAYMENT, BLOCKING OR INSULATION WITH SIGN OF DECAY OR WEATHER DAMAGE DUE TO WEATHER EXPOSURE OR UNAUTHORIZED ACCESS.
- 4. REMOVE EXTERIOR WOODEN POST AND RAILING COMPLETE.
- 5. REMOVE EXTERIOR ADJACENT WOOD DECK.
- 6. REMOVE EXTERIOR SHOWERS COMPLETE. EXISTING SHOWERS TO BE REINSTALLED OVER NEW SIKING.



NORTH ELEVATION

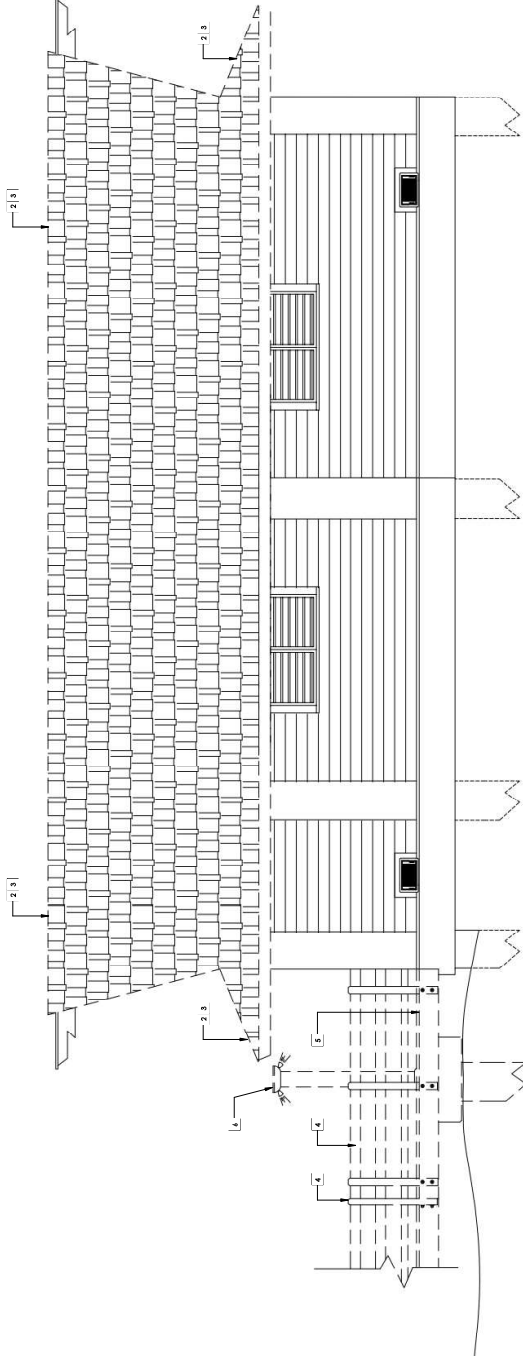


SOUTH ELEVATION

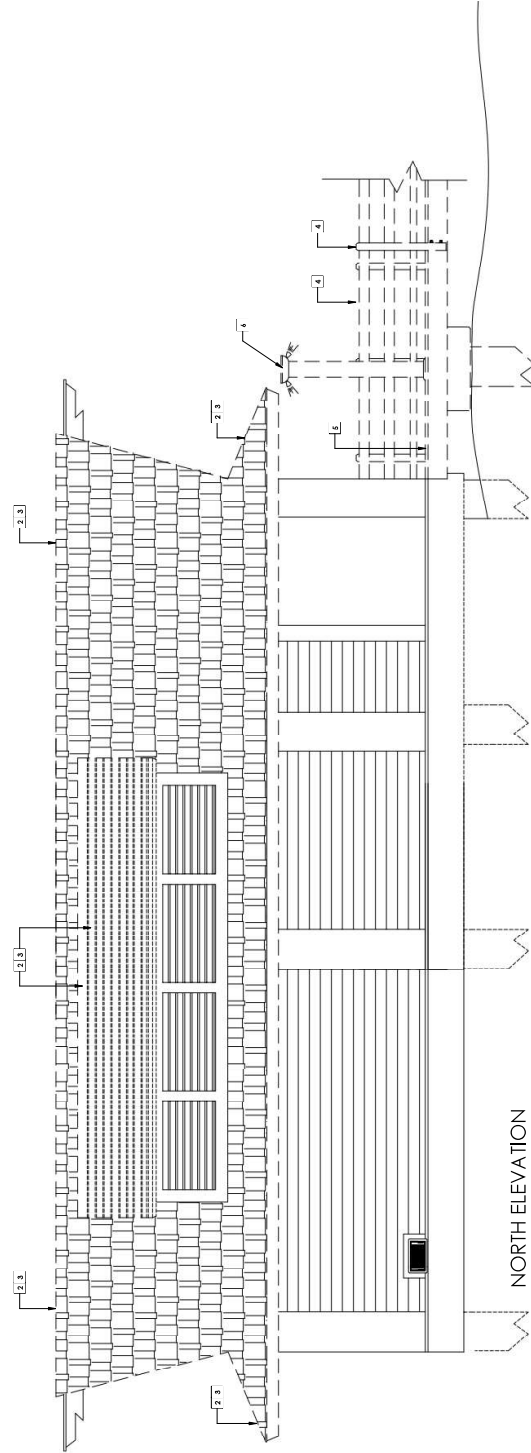
1 MENS RESTROOMS - NORTH & SOUTH ELEVATIONS / DEMO  
SCALE: 1/8" = 1'-0"

DEMOLITION ELEVATION NOTES

- 1. NOT USED
- 2. REMOVE ROOF SHINGLES COMPLETE.
- 3. REMOVE ANY ROOFING UNDERLAYMENT, BLOCKING OR INSULATION WITH SIGN OF DECAY OR WEATHER DAMAGE DUE TO WEATHER EXPOSURE OR UNAUTHORIZED ACCESS.
- 4. REMOVE EXTERIOR WOODEN POST AND RAILING COMPLETE.
- 5. REMOVE EXTERIOR ADJACENT WOOD DECK.
- 6. REMOVE EXTERIOR SHOWERS COMPLETE / EXISTING SHOWERS TO BE REINSTALLED OVER NEW SIKING.



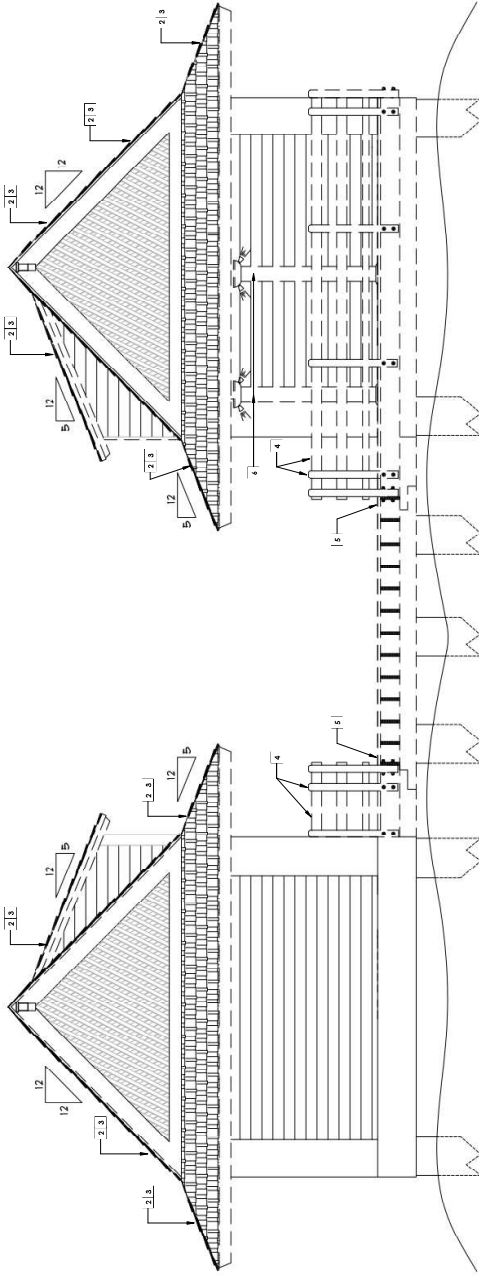
SOUTH ELEVATION



NORTH ELEVATION

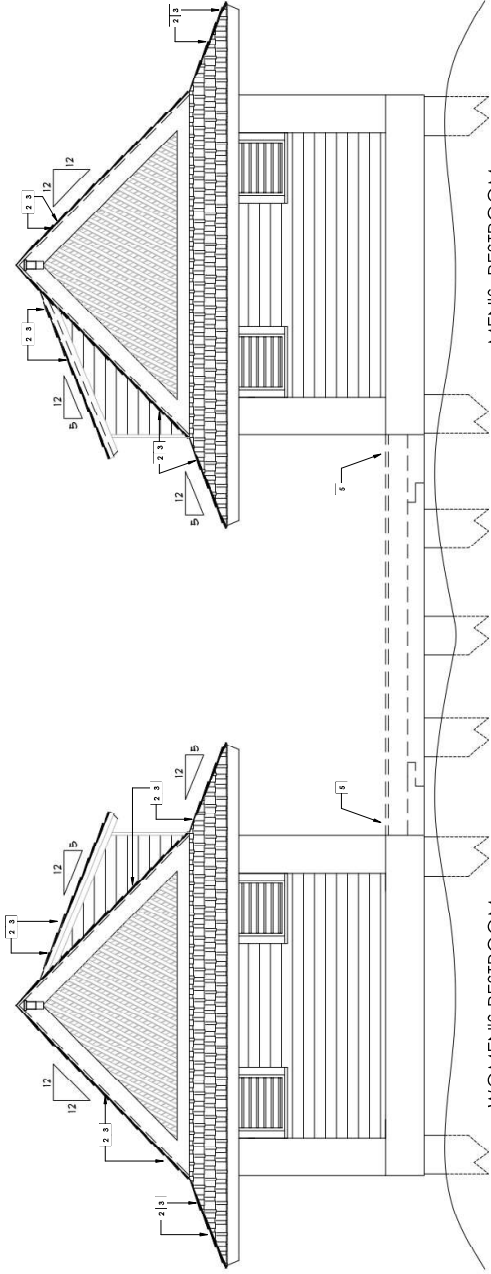
1 WOMENS RESTROOMS - NORTH & SOUTH ELEVATIONS / DEMO  
SCALE: 1/8" = 1'-0"

- DEMOLITION ELEVATION NOTES**
1. NOT USED
  2. REMOVE ROOF SHINGLES COMPLETE.
  3. REMOVE ANY ROOFING UNDERLAYMENT, BLOCKING OR INSULATION WITH SIGN OF DECAY OR WEATHER DAMAGE DUE TO WEATHER EXPOSURE OR UNAUTHORIZED ACCESS.
  4. REMOVE EXISTING EXTERIOR WOODEN POST AND RAILING COMPLETE.
  5. REMOVE EXTERIOR ADJACENT WOOD DECK.
  6. REMOVE EXTERIOR SHOWERS COMPLETE. EXISTING SHOWERS TO BE REINSTALLED OVER NEW DECKING.



WOMEN'S RESTROOM

WEST ELEVATION



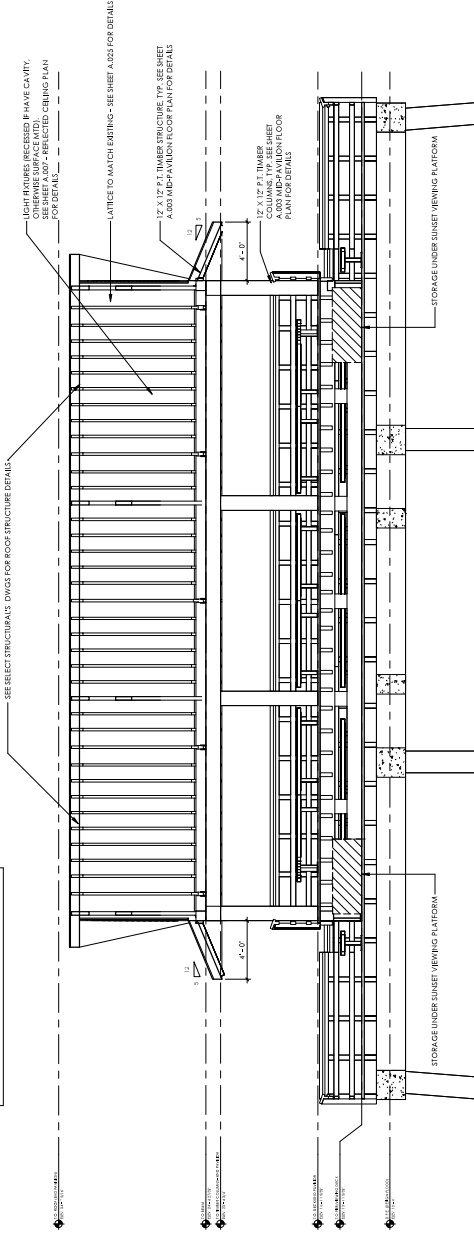
MEN'S RESTROOM

EAST ELEVATION

1 WOMEN/MEN RESTROOMS - WEST & EAST ELEVATIONS / DEMO

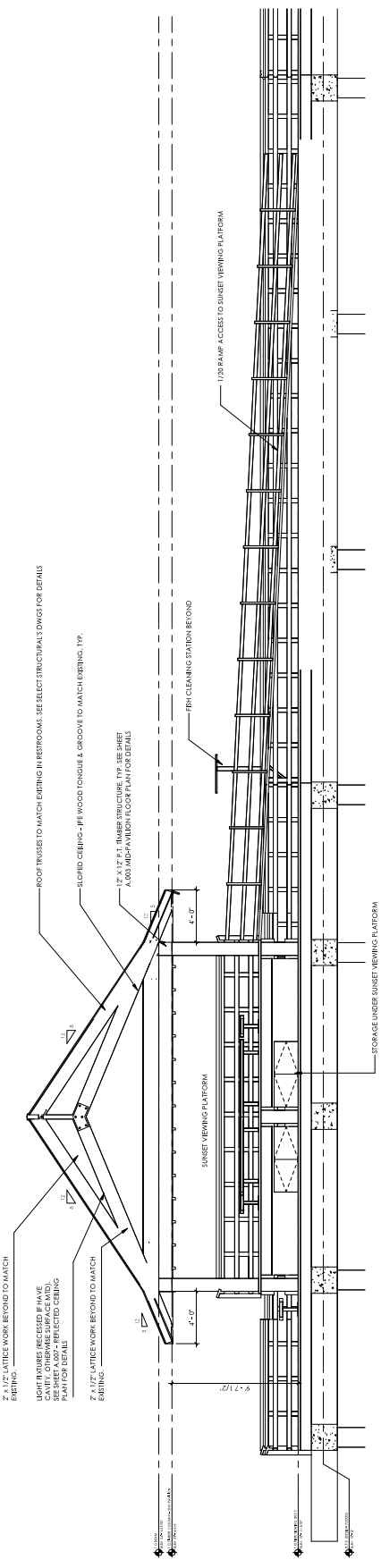
SCALE: 1/8" = 1'-0"

NOTE: REFER TO SELECT STRUCTURAL DWGS FOR OVERALL STRUCTURAL COMPONENTS OF THE SUNSET VIEWING PLATFORMS AND NEW ROOF EXTENSION AT RESTROOMS AREA.



1 TRANSVERSE SECTION #2 - END PAVILION  
SCALE: 1/4" = 1'-0"

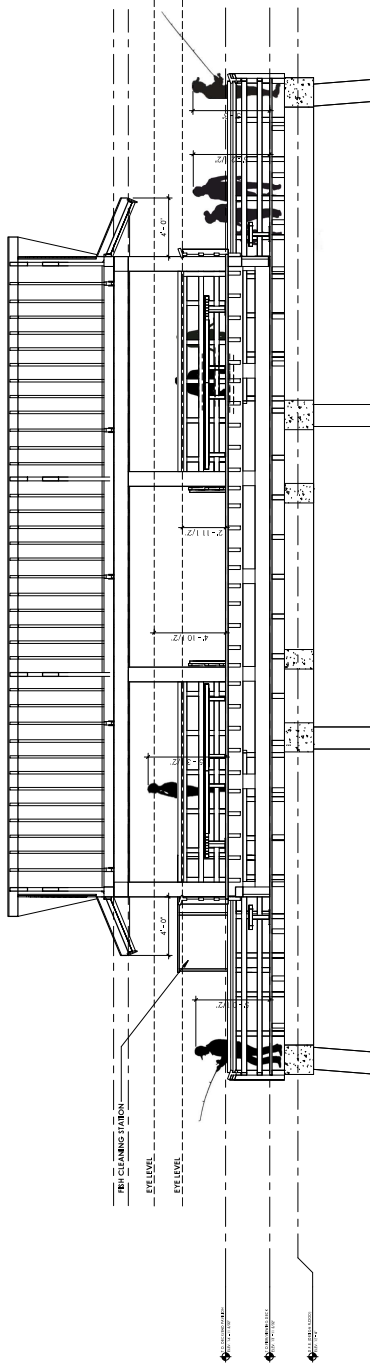
2x4 LATTICE WORK BEGINS TO MATCH EXISTING.  
LIGHT FIXTURES (NEEDED) IF HAVE CAVITY. SEE SHEET A.007 - REFLECTED CEILING PLAN FOR DETAILS.  
2x4 LATTICE WORK BEGINS TO MATCH EXISTING.



2 LONGITUDINAL SECTION #2 - END PAVILION  
SCALE: 1/4" = 1'-0"

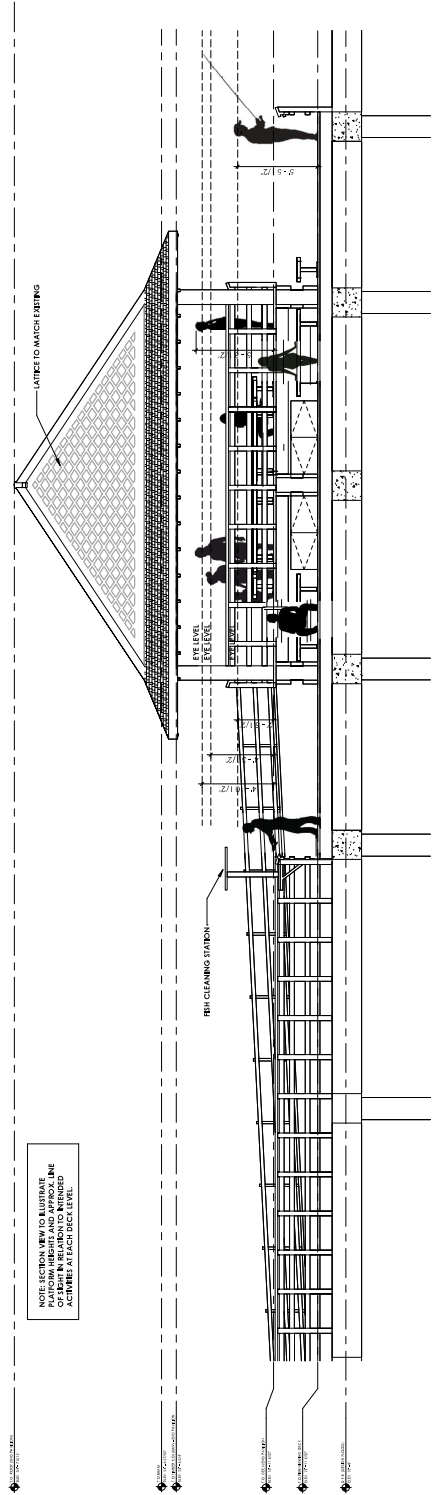
NOTE: SECTION VIEW TO ILLUSTRATE  
 THE LOCATION AND PLACEMENT OF  
 ARCHITECTURAL DETAILS AND  
 ACTIVITIES AT EACH DECK LEVEL.

NOTE: REFER TO SELECT STRUCTURAL'S DWGS FOR  
 THE LOCATION AND PLACEMENT OF  
 PANELS, CONCESSIONS, DECKING, FLEES AND  
 NEW ROOF EXTENSION AT RESTROOM AREA.



① TRANSVERSE SECTION # 1 - END PAVILION  
 SCALE: 1/4" = 1'-0"

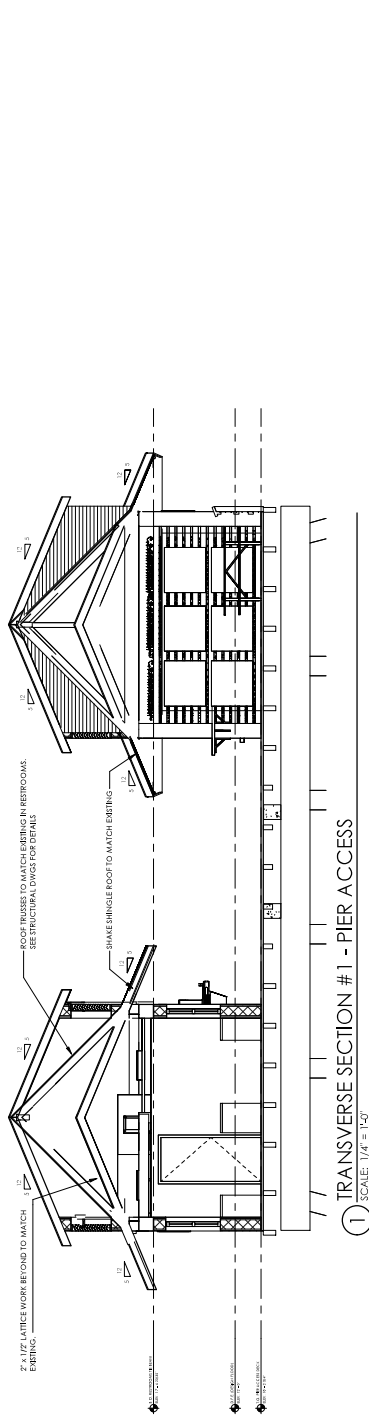
NOTE: SECTION VIEW TO ILLUSTRATE  
 THE LOCATION AND PLACEMENT OF  
 ARCHITECTURAL DETAILS AND ACTIVITIES  
 ALONG THE ENTIRE LENGTH.



② LONGITUDINAL SECTION # 1 - END PAVILION  
 SCALE: 1/4" = 1'-0"

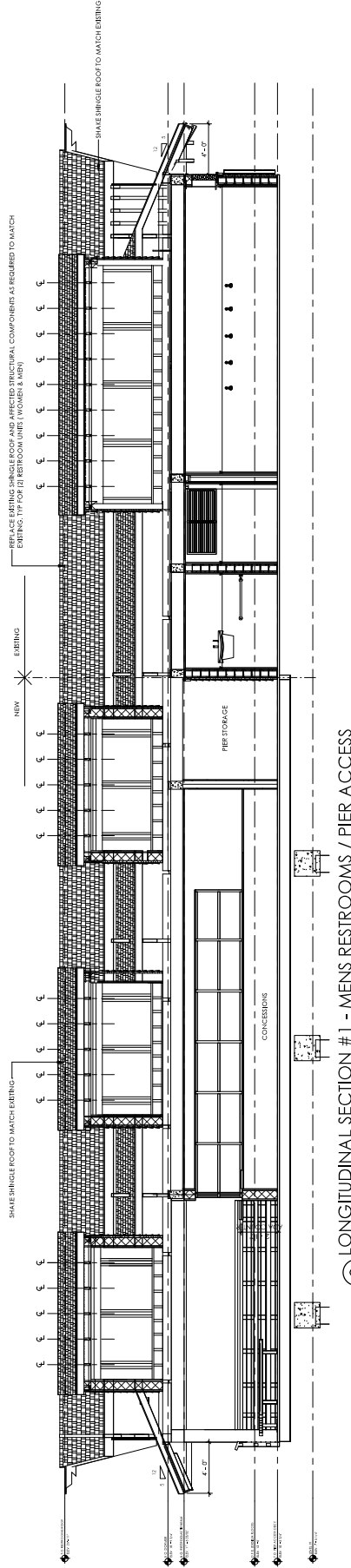




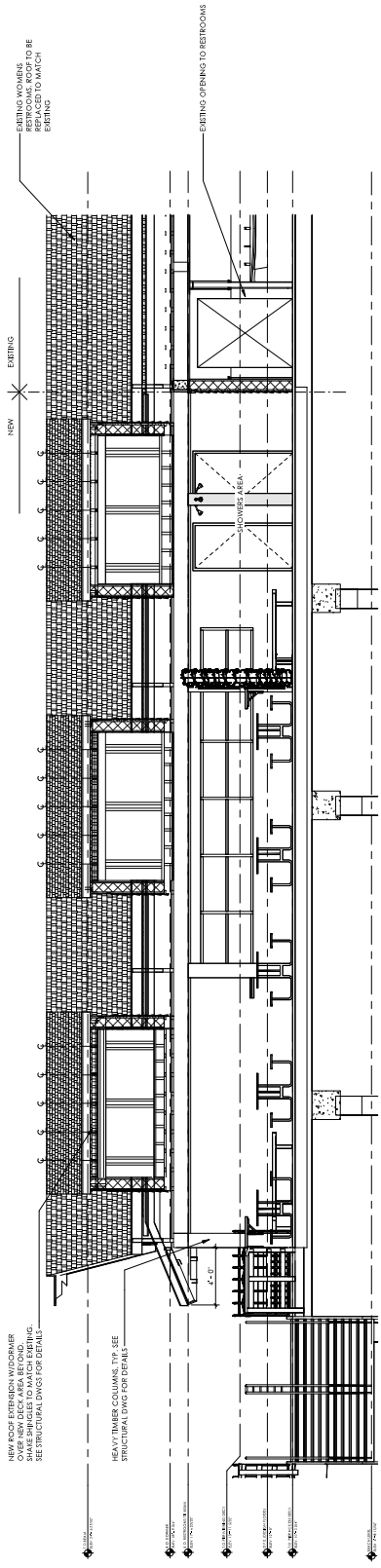


NOTE: REFER TO RECONSTRUCTION SET FOR ALL STRUCTURAL COMPONENTS OF THE PAVILIONS RESTROOMS AREA. (SEE ARCHITECTURE)

① TRANSVERSE SECTION #1 - PIER ACCESS  
SCALE: 1/4" = 1'-0"



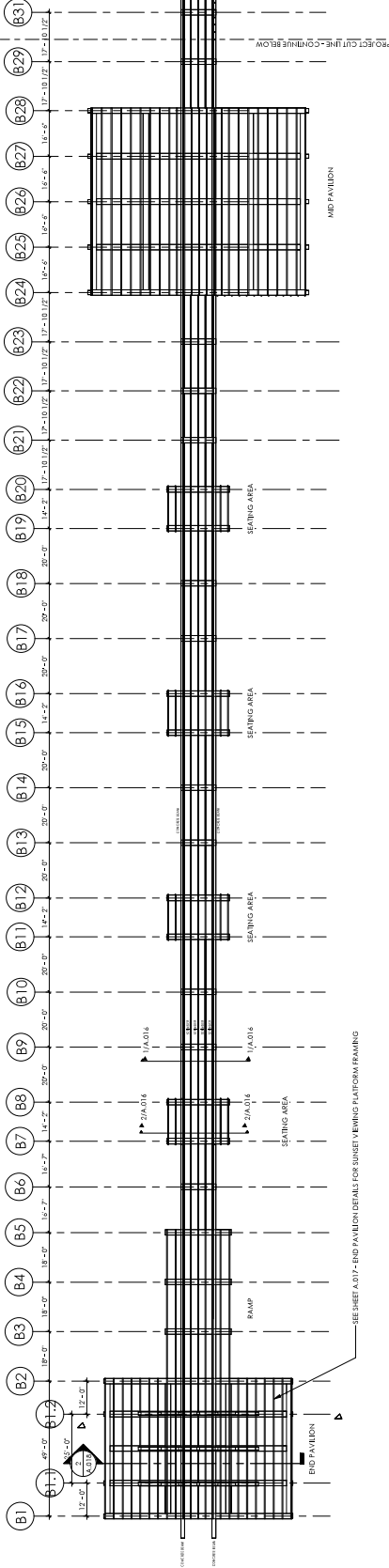
② LONGITUDINAL SECTION #1 - MENS RESTROOMS / PIER ACCESS  
SCALE: 1/4" = 1'-0"



③ LONGITUDINAL SECTION #2 - SHOWER AREA / PIER ACCESS  
SCALE: 1/4" = 1'-0"

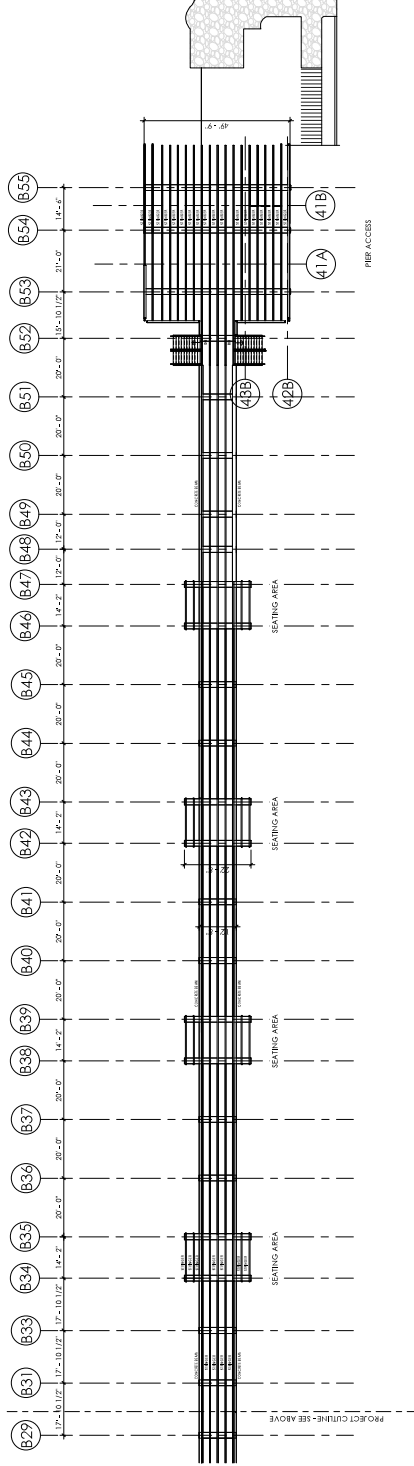


NOTE: FINISHES, WALLS, ROOF, RAILING, DECKING FLOOR AND RAMP NOT SHOWN ON FRAMING PLAN FOR CLARITY PURPOSES. FINISHES ARE LISTED ABOVE FOR OVERALL VIEWS. ENLARGED PLANS AND DETAILS.

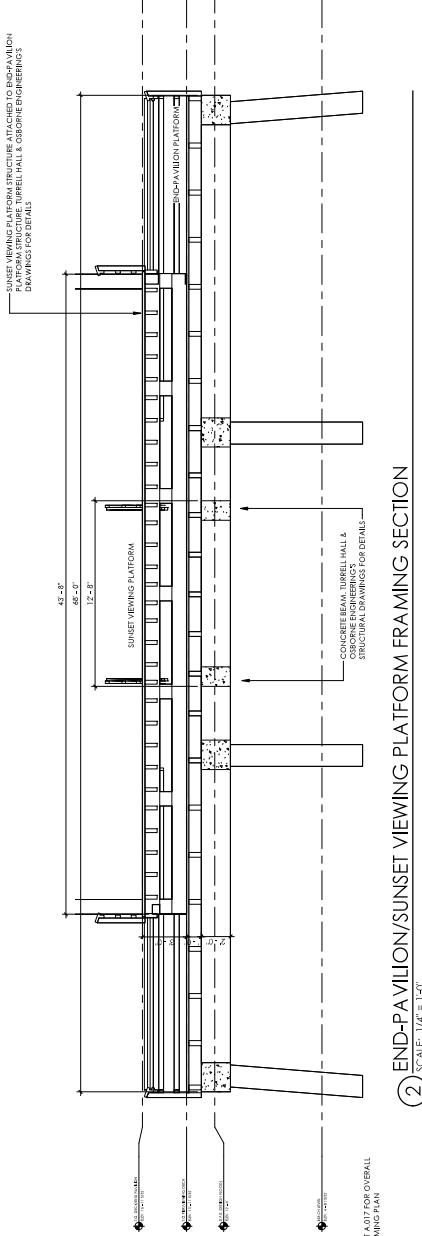


1 END-PAVILION TO MID-PAVILION FRAMING PLAN  
 SCALE: 1" = 20'-0"

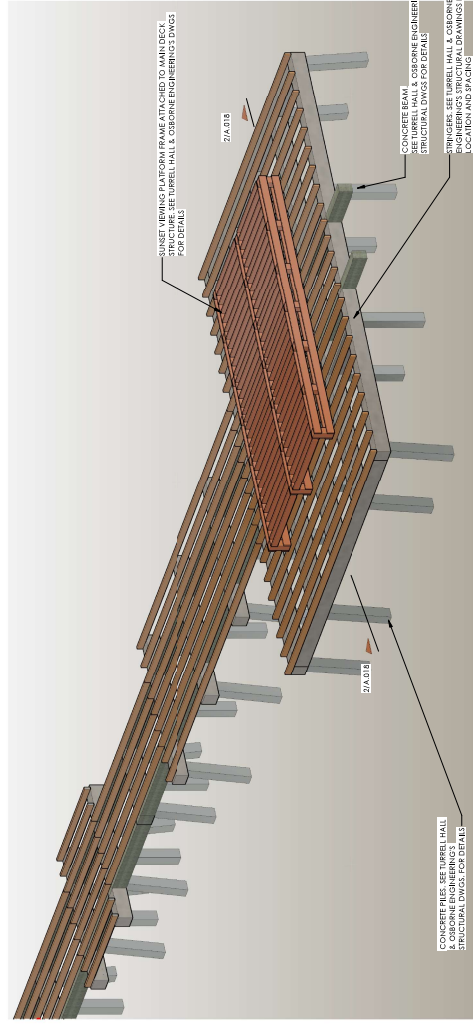
NOTE: REFER TO TURRELL HALL & OBSERVING PLATFORM FOR OVERALL FRAMING AND WALL STRUCTURAL COMPONENTS OF THE PAVILION. CONSIDERING DECKING, COLUMN RAILING AND RAMP FOOT DISTRIBUTION THEREAFTER.



2 OVERALL PIER FLOOR FRAMING - PIER ACCESS  
 SCALE: 1" = 20'-0"



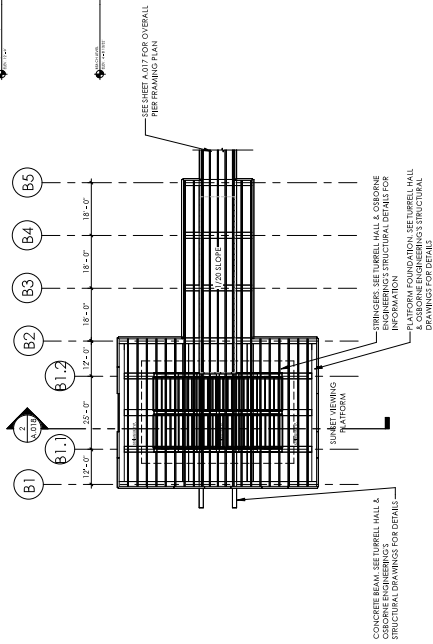
2 END-PAVILION/SUNSET VIEWING PLATFORM FRAMING SECTION  
 SCALE: 1/4" = 1'-0"



3 3D END PAVILION FRAMING  
 SCALE:

NOTE: REFER TO SELECT STRUCTURAL DWGS FOR OVERALL STRUCTURAL COMPONENTS OF THE AND HEAVY ROOF EXTENSION AT RESTROOM AREA

NOTE: FOR PIER, WALL, ROOF, BALINGS, BEAMS, FLOOR AND RAFTS NOT SHOWN ON FRAMING PLAN FOR CLARITY PURPOSES. REFER TO SHEET A.001-A.003 FOR OVERALL VEIL ENLARGED PLAN AND DETAIL.



1 END-PAVILION/SUNSET VIEWING PLATFORM FRAMING PLAN  
 SCALE: 1" = 20'-0"







25118 NAPLES PIER RECONSTRUCTION  
25118 NAPLES PIER RECONSTRUCTION  
25118 NAPLES PIER RECONSTRUCTION  
25118 NAPLES PIER RECONSTRUCTION  
25118 NAPLES PIER RECONSTRUCTION

NAPLES PIER RECONSTRUCTION  
25 12th Ave S., Naples FL 34102

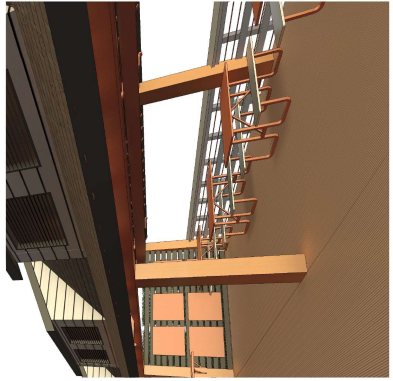
FLORIDA SEAL  
REG# AR 19371  
NOT FOR CONSTRUCTION

SHEET ISSUE DATE  
09/25/2023  
09/25/2023  
09/25/2023  
09/25/2023  
09/25/2023  
09/25/2023  
09/25/2023  
09/25/2023  
09/25/2023  
09/25/2023

3D VIEWS -  
PIER DECK  
ACCESS

PHASE CD  
PR NO 23118

A.021



① SEATING AREA ACCROSS CONCESSIONS - OPTION A  
SCALE:



② 3D VIEW - SHOWERS/GREEN WALL OPTION A  
SCALE:



③ 3D VIEW - ORDER AREA AT CONCESSIONS OPTION A  
SCALE:



④ 3D - CONCESSIONS SEATING AREA OPTION A  
SCALE:



⑤ SEATING AREA / CONCESSIONS - OPTION A  
SCALE:



MHR ARCHITECTURE  
 1501 16th Avenue S, Suite 100  
 Naples, FL 34102  
 239.641.1111  
 www.mhrarchitect.com

NAPLES PIER RECONSTRUCTION  
 25 12th Ave S, Naples FL 34102

NOT FOR CONSTRUCTION  
 FLORIDA SEAL  
 REG# 49147

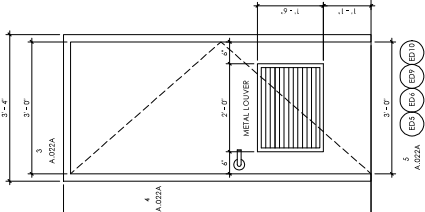
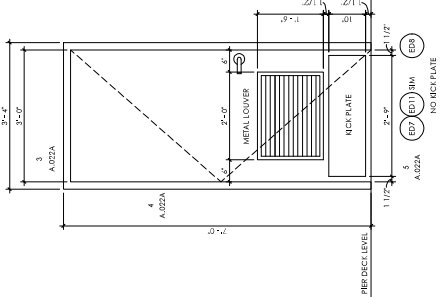
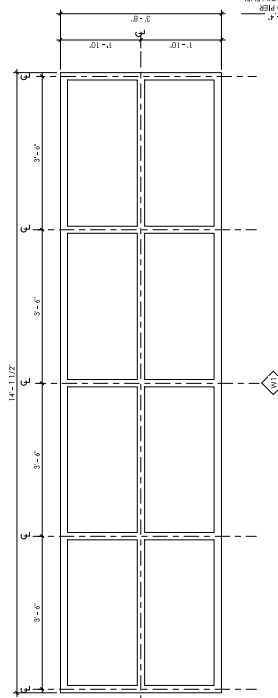
SHEET DATE 09/25/2023  
 90% CD SET

WINDOW AND DOOR SCHEDULE

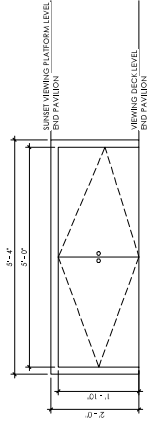
PHASE CD  
 PR NO 23118

A.022

STOREFRONT SCHEDULE					
MARK	HIGHT	WIDTH	Material	Description / Finish	Court
W1	3'-6"	14'-1 1/2"	ALUM.	LANNER 4011 FINISH, 50% PVD FINISH TO BE SELECTED FROM PERMACOAT AND FERMALITE FINISHES; DESIGN AS SHOWN	1
W2	3'-6"	24'-0"	ALUM.	LANNER 4011 FINISH, 50% PVD FINISH TO BE SELECTED FROM PERMACOAT AND FERMALITE FINISHES; DESIGN AS SHOWN	1
W3	3'-6"	24'-0"	ALUM.	LANNER 4011 FINISH, 50% PVD FINISH TO BE SELECTED FROM PERMACOAT AND FERMALITE FINISHES; DESIGN AS SHOWN	1



**NOTE:**  
 1. PAINT TO MEET AAMA 980.06 COLOUR AS SELECTED BY ARCHITECT.  
 2. VERTICAL VENTILATED CHANNELS ATTACHED TO DOOR FRAME PER MANUFACTURERS SPECS TO ALLOW FLOOD SHIELD INSTALLATION. SEE SHEET A.022A FOR DETAILS.  
 3. VERTICAL VENTILATED CHANNELS ATTACHED TO DOOR FRAME PER MANUFACTURERS SPECS TO ALLOW FLOOD SHIELD INSTALLATION. SEE SHEET A.022A FOR DETAILS.  
 4. SEE DOOR HEAD, JAMB AND SILL DETAILS ON SHEET A.022A

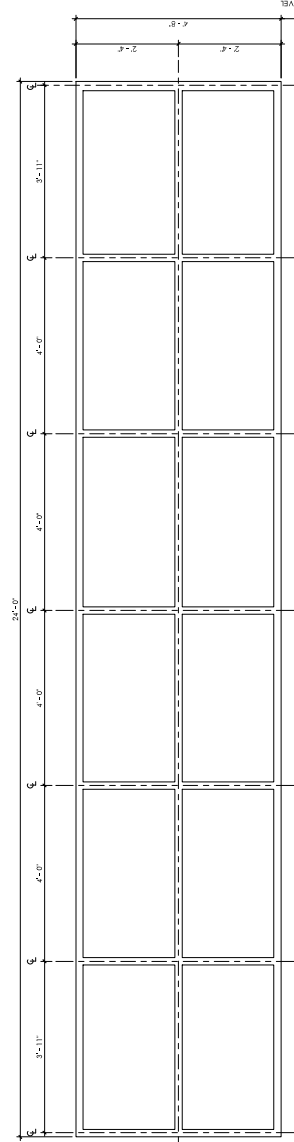
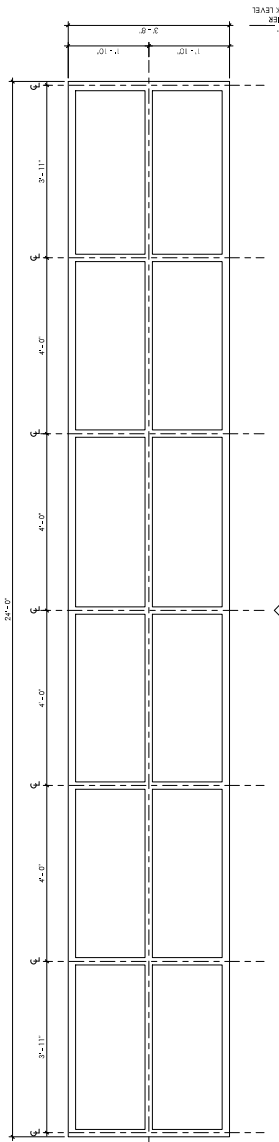


2 DOORS & FRAME TYPES  
 SCALE: 3/4" = 1'-0"

MARK	HEIGHT	WIDTH	DOOR / WINDOW	DOOR TYPE	FINISH	FRAME MATERIAL	HARDWARE SET	DESCRIPTION	COURT
B01	1'-10"	3'-0"	HA	SWING	NOCE 1A/02Z	HA	05	UNDER PLATFORM STORAGE	0
B02	1'-10"	3'-0"	HA	SWING	NOCE 1A/02Z	HA	05	UNDER PLATFORM STORAGE	1
B03	1'-10"	3'-0"	HA	SWING	NOCE 1A/02Z	HA	05	UNDER PLATFORM STORAGE	1
B04	1'-10"	3'-0"	HA	SWING	NOCE 1A/02Z	HA	05	UNDER PLATFORM STORAGE	1
B05	6'-2 1/2"	3'-0"	HA	SWING	NOCE 1A/02Z	HA	01	CONCRESSIONS SEE NOTE 3	1
B06	6'-2 1/2"	3'-0"	HA	SWING	NOCE 1A/02Z	HA	01	CONCRESSIONS SEE NOTE 3	1
B07	6'-2 1/2"	3'-0"	HA	SWING	NOCE 1A/02Z	HA	02	CHANGING ROOM	1
B08	6'-2 1/2"	3'-0"	HA	SWING	NOCE 1A/02Z	HA	02	CHANGING ROOM	1
B09	6'-2 1/2"	3'-0"	HA	SWING	NOCE 1A/02Z	HA	02	CHANGING ROOM	1
B10	6'-2 1/2"	3'-0"	HA	SWING	NOCE 1A/02Z	HA	02	CHANGING ROOM	1
B11	6'-2 1/2"	3'-0"	HA	SWING	NOCE 1A/02Z	HA	02	CHANGING ROOM	1
B12	6'-2 1/2"	3'-0"	HA	SWING	NOCE 1A/02Z	HA	02	CHANGING ROOM	1
GATE 1	3'-6"	6'-0"	ALUM.	SWING	NOCE 1A/02Z	ALUM.	04	BEACH STAIR / ELEVATOR	1
GATE 2	3'-6"	6'-0"	ALUM.	SWING	NOCE 1A/02Z	ALUM.	04	BEACH STAIR / ELEVATOR	2
GATE 3	3'-6"	6'-0"	ALUM.	SWING	NOCE 1A/02Z	ALUM.	04	PARKING / PIER ACCESS	2

**HARDWARE SCHEDULE**

HARDWARE FIELD:	MARK	DESCRIPTION	FINISH	QTY
HARDWARE FIELD:	B1279 4 1/2" x 1 1/2"	HEAVY DUTY FRINGE HANDLE	050 GRAY IVE	1
	A4302 STYLE 12 W/ VANDIGARD	ALUM. LOCK	430 SCHEDULE	1
	A4302 STYLE 12 W/ VANDIGARD	ALUM. LOCK	430 SCHEDULE	1
	A4302 STYLE 12 W/ VANDIGARD	ALUM. LOCK	430 SCHEDULE	1
HARDWARE FIELD:	B1279 4 1/2" x 1 1/2"	HEAVY DUTY FRINGE HANDLE	430 GRAY IVE	1
	A4302 STYLE 12 W/ VANDIGARD	ALUM. LOCK	430 SCHEDULE	1
HARDWARE FIELD:	B1279 4 1/2" x 1 1/2"	HEAVY DUTY FRINGE HANDLE	430 GRAY IVE	1
	A4302 STYLE 12	ALUM. LOCK	430 SCHEDULE	1
	A400 / A401	ALUM. LOCK	430 SCHEDULE	1
	A400 / A401	ALUM. LOCK	430 SCHEDULE	1
HARDWARE FIELD:	GATE TRACK BRACKET	GATE TRACK BRACKET	430 SCHEDULE	1
	REAR WHEEL MOUNTING BRACKET	REAR WHEEL MOUNTING BRACKET	430 SCHEDULE	1
	LATCH	LATCH	430 SCHEDULE	1
HARDWARE FIELD:	B1279 4 1/2" x 1 1/2"	HEAVY DUTY FRINGE HANDLE	430 GRAY IVE	1
	A4302 STYLE 12 W/ VANDIGARD	ALUM. LOCK	430 SCHEDULE	1
	A4302 STYLE 12 W/ VANDIGARD	ALUM. LOCK	430 SCHEDULE	1



1 STOREFRONT FRAME TYPES  
 SCALE: 3/4" = 1'-0"

**NGP** National Guard Products Inc.  
 1-800-647-7874

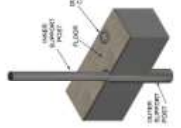


**Flood Shield**

**Installation Instructions**

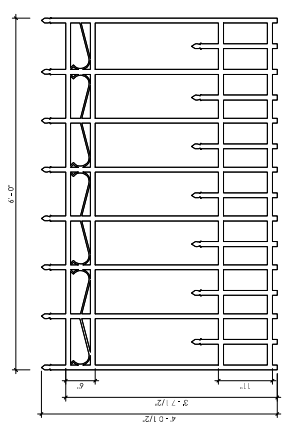
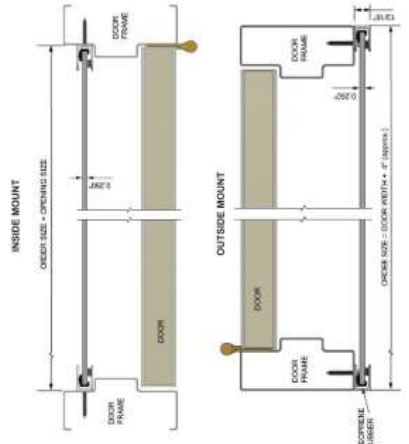
1. Position mounting channels with radius corners up, in desired location with larger holes facing exterior.
2. With channels vertically aligned, mark screw holes.
3. Drill pilot holes for screws using 9/64" drill bit. When using plastic anchor, use 1/4" drill bit.
4. Apply continuous bead of waterproof caulk to center of mounting side of channels.
5. Install channels with screws provided.
6. Caulk bottom outer edges of channels to floor surface.

**Optional Support Post:**  
 Bore 3" deep hole in floor surface for 1-1/2" O.D. outer support post. Insert to the center of the interior side of the plate. Install outer post in hole with top flush with floor surface. Cover with dust cap. When inserting shield, remove dust cap and insert inner support post.

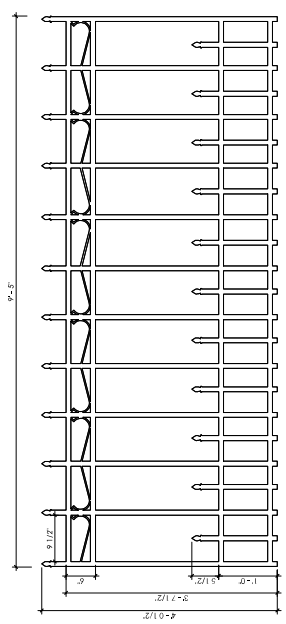


**Operating Instructions**

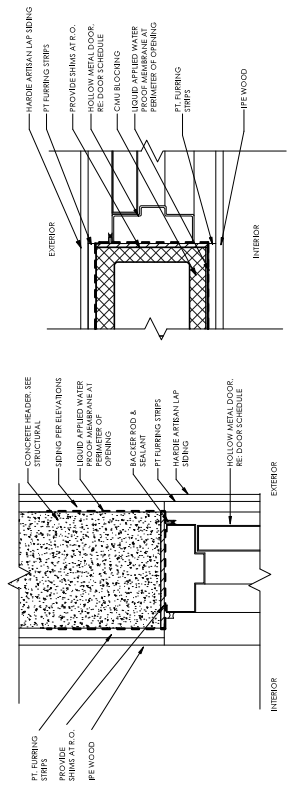
Inspect channels and floor surface to insure proper working condition.  
 Inserting Shield: With springs and label facing out, insert bottom of plate into channels.  
 Push outward to compress springs while lowering plate.  
 Removing Shield: While compressing springs to remove tension off the gasketing, pull straight up on plate to remove from channel.  
 Storing Shield: Store the shield indoors with no weight against the gasket.



1 STAIRS/DECKING - GATE DETAIL  
 SCALE: 1" = 1'-0"

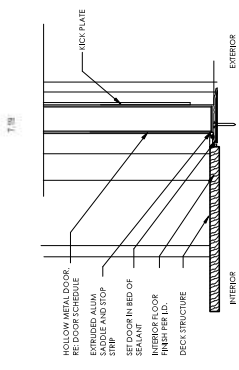


2 PARKING ENTRY - GATE DETAIL  
 SCALE: 1" = 1'-0"



3 DOOR HEAD  
 SCALE: 3" = 1'-0"

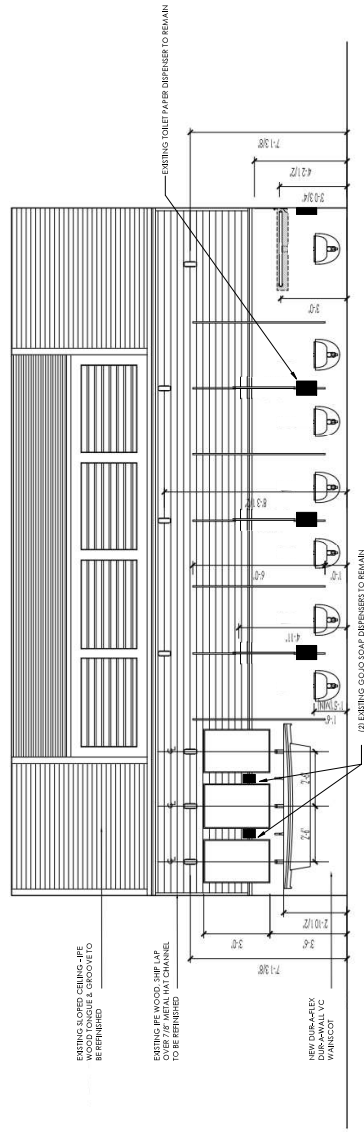
4 DOOR JAMB  
 SCALE: 3" = 1'-0"



5 DOOR SILL  
 SCALE: 3" = 1'-0"

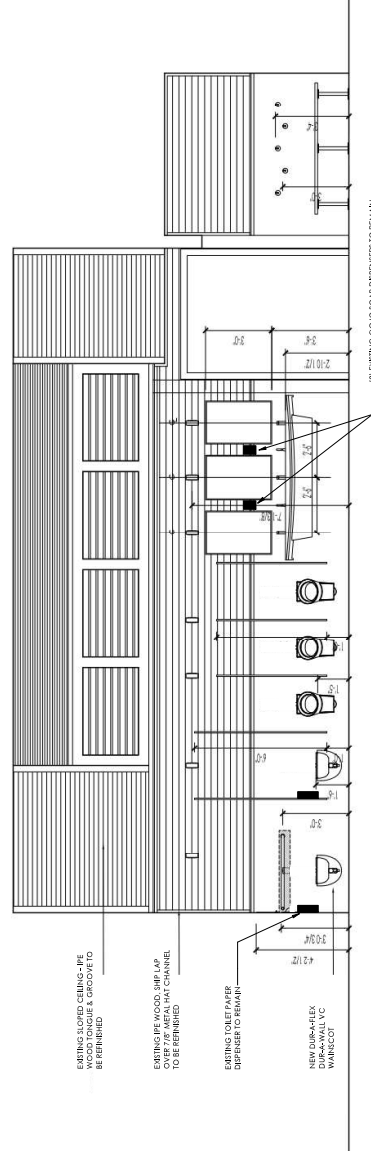






① **WOMEN'S RESTROOMS - INTERIOR FINISHES DETAILS**

SCALE: 1/8" = 1'-0"



② **RESTROOMS - MEN INTERIOR ELEVATIONS**

SCALE: 1/8" = 1'-0"

1001 W. PALM BEACH BLVD. SUITE 200  
 WEST PALM BEACH, FL 33411  
 TEL: 561.833.1111  
 WWW.MHRARCHITECTURE.COM

25 12th Ave S., Naples FL 34102

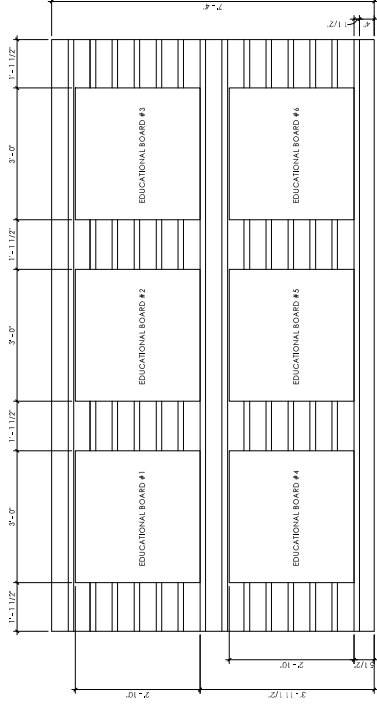
NOT FOR CONSTRUCTION

SHEET SIZE DATE  
 09/25/2023

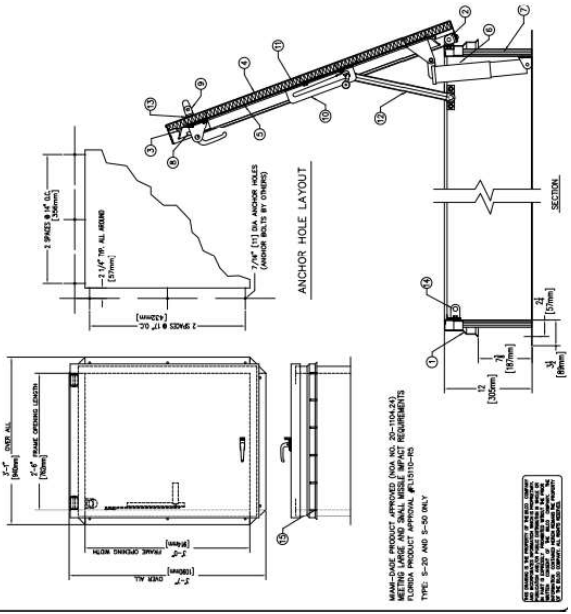
DETAILS

PHASE CD  
 PR NO 23118

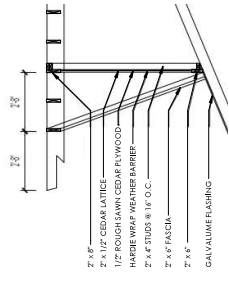
A.025



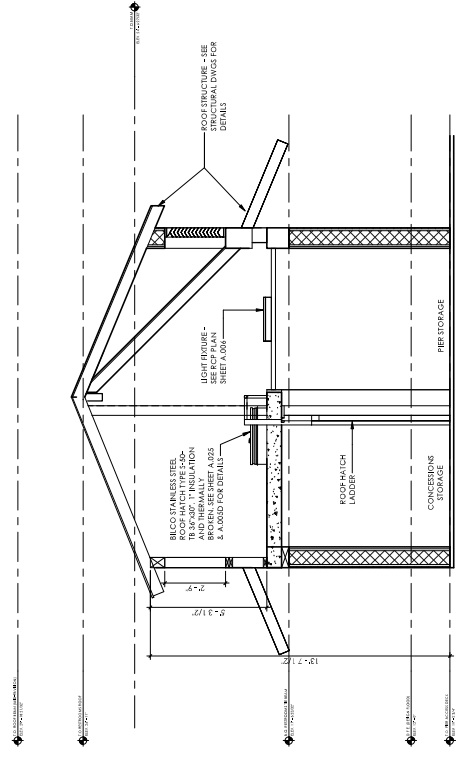
4 SCREEN / EDUCATIONAL BOARD DETAIL  
 SCALE: 3/4" = 1'-0"



2 HATCH DETAIL  
 SCALE: 3/8" = 1'-0"



3 LATTICE/BEAM DETAIL  
 SCALE: 3/8" = 1'-0"



1 CONCESSIONS DECK  
 SCALE: 3/8" = 1'-0"