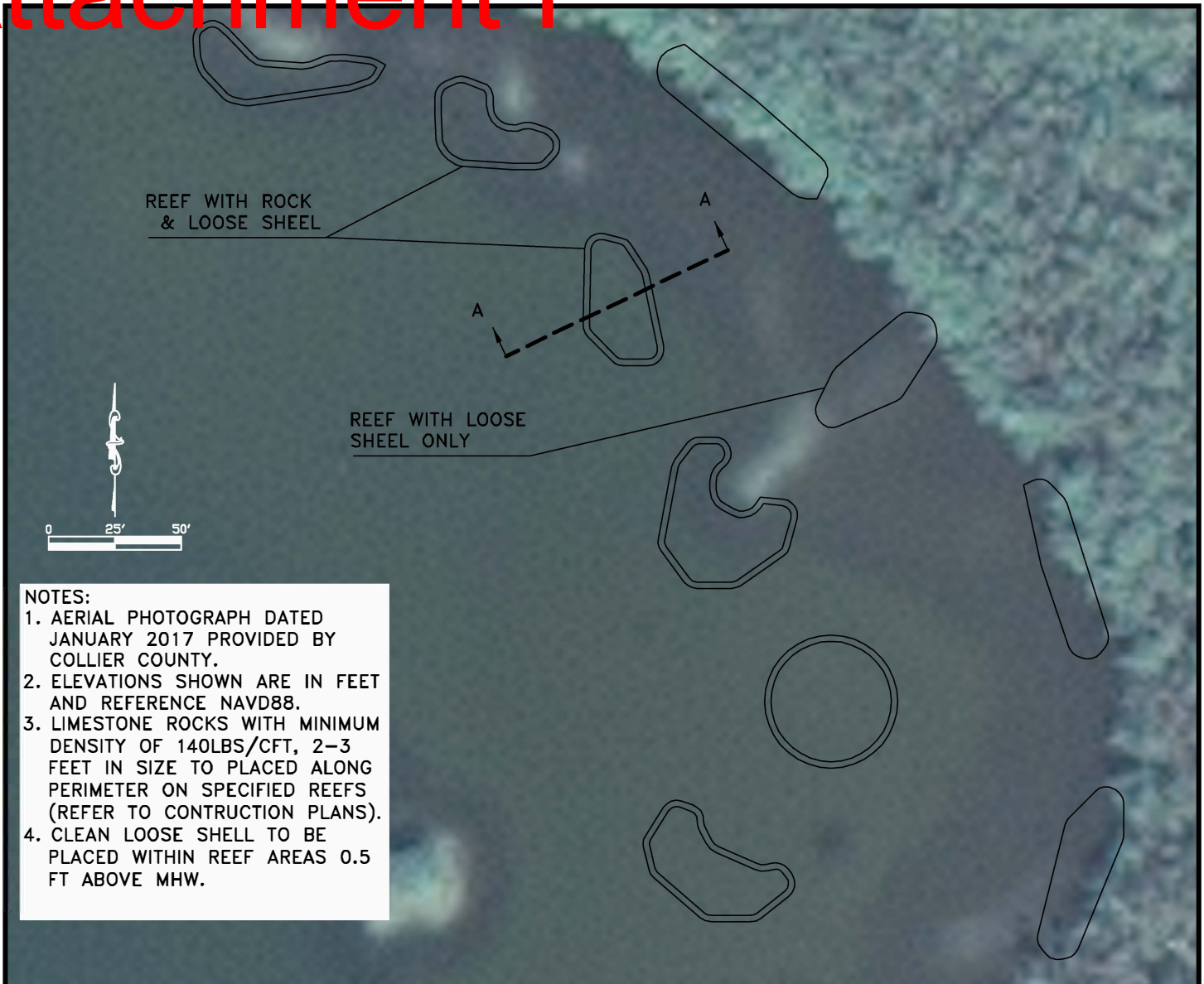
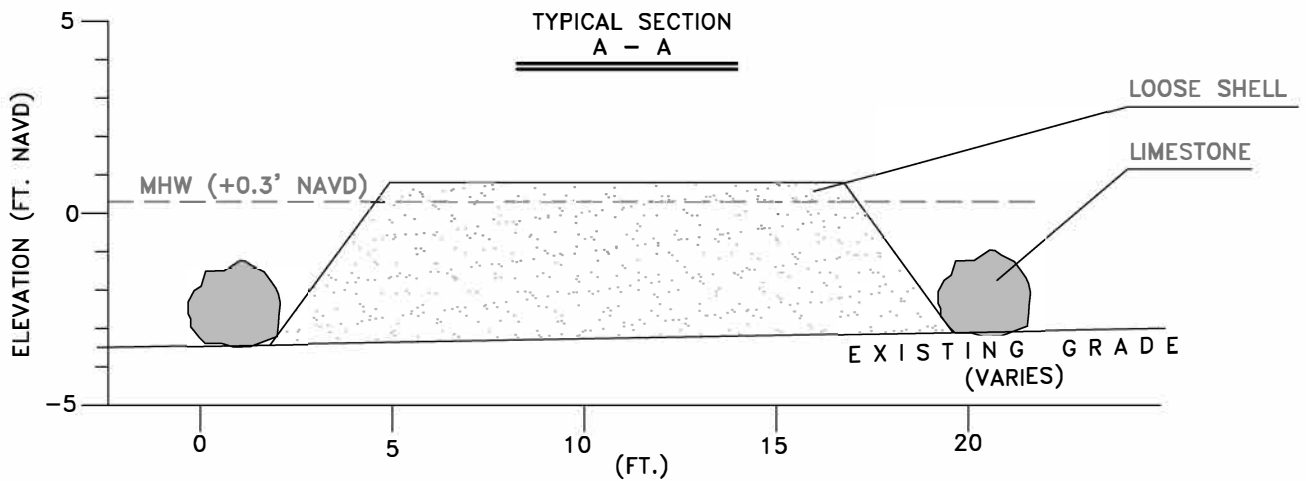


# Attachment F



- NOTES:**
1. AERIAL PHOTOGRAPH DATED JANUARY 2017 PROVIDED BY COLLIER COUNTY.
  2. ELEVATIONS SHOWN ARE IN FEET AND REFERENCE NAVD88.
  3. LIMESTONE ROCKS WITH MINIMUM DENSITY OF 140LBS/CFT, 2-3 FEET IN SIZE TO PLACED ALONG PERIMETER ON SPECIFIED REEFS (REFER TO CONTRUCTION PLANS).
  4. CLEAN LOOSE SHELL TO BE PLACED WITHIN REEF AREAS 0.5 FT ABOVE MHW.



OYSTER REEF RESTORATION CROSS SECTION DETAIL – TYPICAL



**HUMISTON & MOORE ENGINEERS**  
 COASTAL ENGINEERING DESIGN AND PERMITTING

REEF		
FOR: CITY OF NAPLES		
DATE: 06/29/18	FILE: X-SECTION	SCALE: SHOWN
JOB: 24-044	DATUM: NAVD88	FIGURE: 1 OF 1

5679 STRAND COURT  
 NAPLES, FL 34110  
 FAX: (239) 594-2025  
 PHONE: (239) 594-2021  
[www.humistonandmoore.com](http://www.humistonandmoore.com)