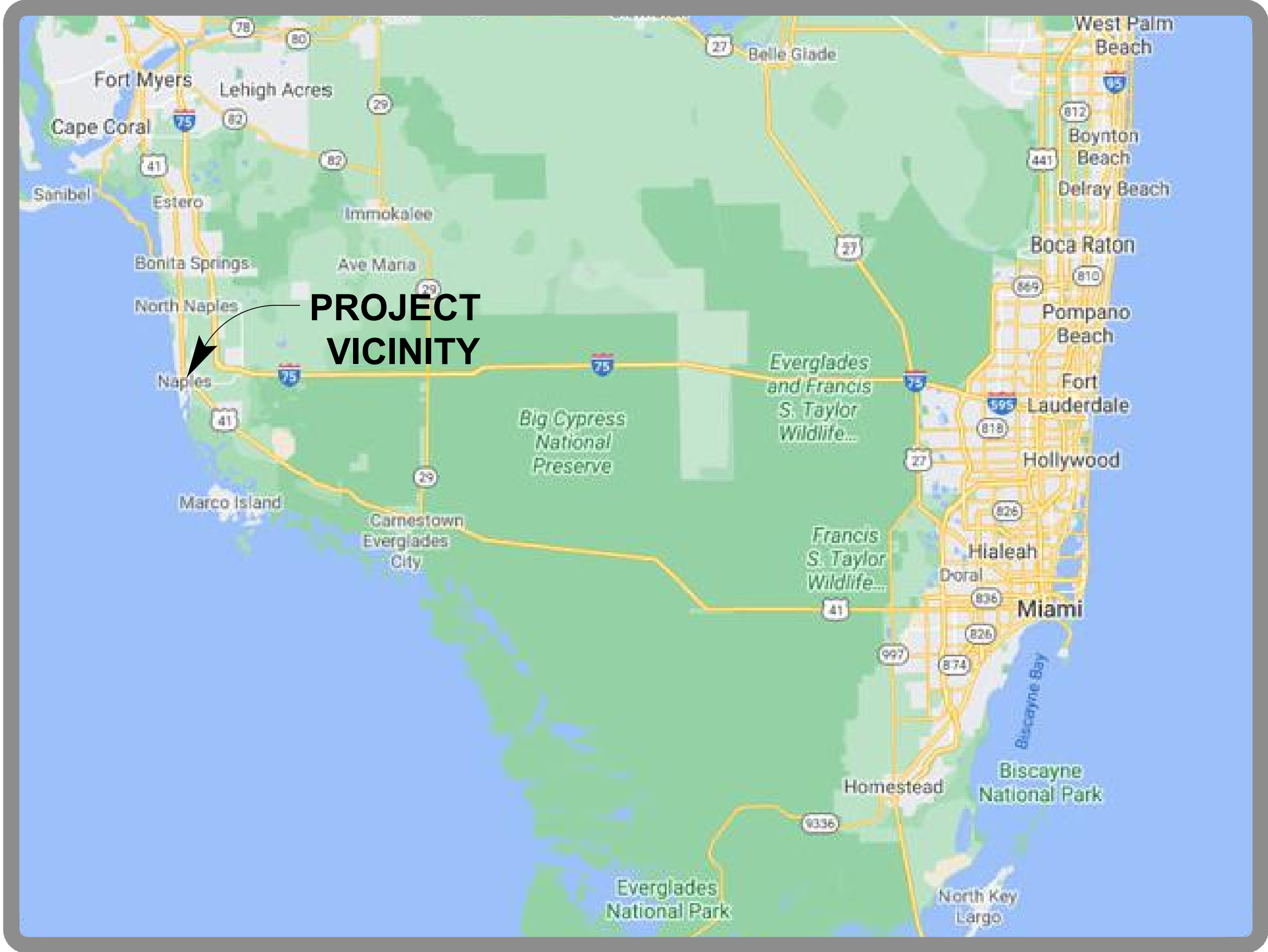


# Naples Beach Restoration & Water Quality Improvement Project Pump Station Project ID: 177310606

## LANDSCAPE ARCHITECTURE DRAWINGS



PROJECT VICINITY MAP

**PLAN STAGE:** 90% CONSTRUCTION DOCUMENTS SUBMITTAL  
OWNER DIRECTED CHANGES

**DATE:** 25 APRIL 2022

PLANS PREPARED FOR:

City of Naples  
735 8th Street South  
Naples, Florida

PLANS PREPARED BY:



3510 Kraft Road, Suite 200, Naples, FL 34105 USA  
www.stantec.com +1.239.649.4040

PROJECT MANAGER: Kevin G. Mangan, PLA



90% CONSTRUCTION DOCUMENTS SUBMITTAL  
OWNER DIRECTED CHANGES

Naples Beach Restoration & Water  
Quality Improvement Project  
Pump Station  
Project ID: 177310606

I:\1773\0606\Drawings\0606\Source\p\stentec\active\landscape\sheet\L0000.dwg  
2022.04.25 12:27:20 PM 2022.04.25 12:27:20 PM

Revision	By	Appd.	YY.MM.DD

90% CD Submittal - Owner Directed Changes	KNB	FAD	2022.04
90% CD Submittal	KNB	FAD	2022.04
	By	Appd.	YYYY.MM.DD

Consultants



3510 Kraft Road, Suite 200  
Naples, FL 34105  
www.stantec.com



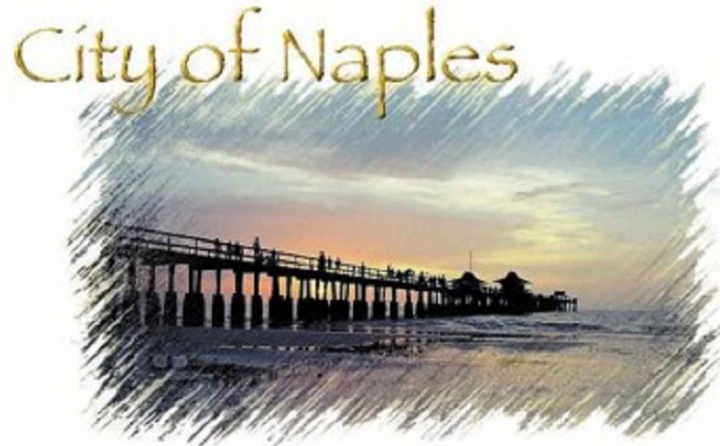
7201 Delaine Court  
Sarasota, FL 32420  
www.ericksonconsultingengineers.com

Copyright Reserved  
The Contractor shall verify and be responsible for all dimensions.  
DO NOT scale the drawing - any errors or omissions shall be reported  
to Erickson Consulting Engineers (ECE) without delay.  
The Copyrights to all designs and drawings are the property of ECE.  
Reproduction or use for any purpose other than that authorized by ECE is forbidden.

Client/Project

CITY OF NAPLES  
735 8th St S  
NAPLES, FL.  
Naples Beach Restoration  
& Water Quality  
Improvement Project

File Name: L0000.dwg



Title

Drawing Submittal Log and Sheet  
Index

Project No.

177310606  
Revision

0

Scale

N/A

Drawing No.

L0001

DRAWING SUBMITTAL LOG and SHEET INDEX										
			SUBMITTAL							
SHEET NUMBER	SHEET TITLE	SCALE	90% CONSTRUCTION DOCUMENTS SUBMITTAL 04.08.2022	90% CONSTRUCTION DOCUMENTS SUBMITTAL - Owner Directed Changes 04.25.2022						
			● = ISSUED				R = REVISION			
LANDSCAPE ARCHITECTURE DRAWINGS										
L0000	COVER SHEET	n/a	●	●						
L0001	DRAWING SUBMITTAL LOG and SHEET INDEX	n/a	●	●						
LP001	LANDSCAPE GENERAL NOTES / GENERAL SITE AND CONSTRUCTION NOTES	n/a	●	●						
LP002	LANDSCAPE GENERAL NOTES / GENERAL SITE AND CONSTRUCTION NOTES	n/a	●	●						
LP003	LANDSCAPE GENERAL NOTES / GENERAL SITE AND CONSTRUCTION NOTES	n/a	●	●						
LP004	LANDSCAPE GENERAL NOTES / GENERAL SITE AND CONSTRUCTION NOTES	n/a	●	●						
LP005	LANDSCAPE GENERAL NOTES / GENERAL SITE AND CONSTRUCTION NOTES	n/a	●	●						
LP006	LANDSCAPE GENERAL NOTES / GENERAL SITE AND CONSTRUCTION NOTES	n/a	●	OMIT						
LP007	LANDSCAPE GENERAL NOTES / GENERAL SITE AND CONSTRUCTION NOTES	n/a	●	OMIT						
LP008	LANDSCAPE GENERAL NOTES / GENERAL SITE AND CONSTRUCTION NOTES	n/a	●	OMIT						
LP101	PLANTING PLAN, PLANT SCHEDULE, AND LANDSCAPE NOTES	1"=10'	●	R						
LP102	PLANTING PLAN - COLOR	1"=10'		●						
LP501	PLANTING DETAILS	As Noted	●	●						
LP502	PLANTING DETAILS	As Noted	●	●						



## PART 1 - GENERAL NOTES\_(LANDSCAPE GENERAL NOTES)

A. Provide all labor, materials and equipment for complete installation of landscaping and/or irrigation, as indicated within the contract documents, drawings, and specifications.

B. Install all work in conformance with industry standard trade practices as outlined in CSI Standards and per manufacturer's recommended installation methods unless otherwise noted or amended on the drawings.

- A. DIVISION 00 - PROCUREMENT AND CONTRACTING REQUIREMENTS
- B. DIVISION 01 - GENERAL REQUIREMENTS
- C. DIVISION 02 - EXISTING CONDITIONS
- D. DIVISION 03 - CONCRETE
- E. DIVISION 04 - MASONRY
- F. DIVISION 05 - METALS
- G. DIVISION 06 - WOODS, PLASTICS, AND COMPOSITES
- H. DIVISION 07 - THERMAL AND MOISTURE PROTECTION
- I. DIVISION 09 - FINISHES
- J. DIVISION 10 - SPECIALTIES
- K. DIVISION 11 - EQUIPMENT
- L. DIVISION 12 - FURNISHINGS
- M. DIVISION 22 - PLUMBING
- N. DIVISION 31 - EARTHWORKS
- O. DIVISION 33 - UTILITIES

- A. Provide plant materials in compliance with applicable state and federal laws relating to inspection for diseases and insect infestation.
- B. All plants must be healthy, vigorous material, free of pests and diseases.
- C. Plant materials in some instances may exceed No. 1 grade in order to meet the minimum requirements of this project.
- D. Plants are subject to inspection and approval by the Landscape Architect. Plants required for the work may be inspected and tagged at the growing site before being dug.
- E. Observation at growing site DOES NOT preclude the right of rejection at the job site. Plants damaged by neglect or improper handling during transit or at the job site as determined by the Landscape Architect may be rejected at no cost to the project.
- F. All plant material shall be of No. 1 grade or better quality at time of installation and shall be maintained in this same condition until completion of the one (1) year guarantee period. Decline in condition of plant material during any period (installation, establishment, guarantee) for any reason shall be grounds for rejection and replacement as determined by the Landscape Architect at the contractor's expense.
- G. Employ only qualified personnel familiar with the required work.
- H. All plant material shall be installed in a sound, workmanlike manner and according to accepted good planting procedures with the quality of plant materials as hereinafter described. All elements of site and soil preparation, landscaping, and irrigation shall be installed so as to meet all applicable ordinances and code requirements. It is the contractors responsibility to ensure all applicable codes and ordinances are being met.

1. Provide source of off-site soil to the Landscape Architect for purposes of soil investigation and testing.
2. Take random representative soil samples from across the project areas to be planted.
3. At the Landscape Contractor's expense, test soil samples from both sources for pH, alkalinity, total soluble salts, porosity, sodium content and organic matter and provide results to Landscape Architect for review and acceptance. Lab analysis of soils must contain recommended remediation instructions for the Landscape Architect's consideration and acceptance. Analysis submitted without recommendations will not be reviewed and are rejected.

- A. "Florida Grades and Standards for Nursery Plants", published by The Florida Department of Agriculture and Consumer Services.
- B. "American Standards for Nursery Stock" (ANSI Z60.1-2014), as amended.
- C. Florida State Statute 553.81 "Protection of Underground Pipelines".
- D. The Federal Highway Administration Manual of Uniform Traffic Control Devices, Millennium Edition.
- E. Florida Department of Transportation (FDOT) Design Standards, latest edition, Traffic Control Through Work Zones, Series 600 indices.
- F. Florida Department of Transportation (FDOT) Roadway and Traffic Design Standards, latest edition, Series 500 indices.
- G. Florida Department of Transportation (FDOT) Maintenance Rating Program, latest revision.
- H. ASTM International - American Society for Testing and Materials.
- I. AASHTO - The American Association of State Highway Transportation Officials.
- J. Americans with Disabilities Act (ADA), The ADA Compliance Handbook, latest edition.
- K. The Florida Building Code and The Florida Accessibility Code for Building Construction.
- L. National Arborist Association Standards.
- M. "Arboriculture Second Edition" by Richard W. Harris, as amended.
- N. Land Development Code (LDC) as defined by local municipality, city, or county standards.
- O. The South Florida Water Management District Xeriscapc Plant Guide 2.

A. Submit one (1) quart samples of the following materials:

1. Sandy Loam Topsoil
2. Organic Amendment
3. Mulch
4. Potting Soil

B. Submit a minimum of three (3) representative soils samples for laboratory soil test analysis results for on-site topsoil and imported sandy loam topsoil. Label each sample with the date, location keyed to a site plan or other location system, visible soil condition, and sampling depth. Laboratory test results shall include the following data based on the test results: state recommendations for soil treatments and soil amendments to be incorporated to produce satisfactory planting soil suitable for healthy, viable plants indicated. Include, at a minimum, recommendations for nitrogen, phosphorous, and potassium fertilization, and for micro-nutrients.

- C. Submit manufacturer's data for the following:
  - 1. Fertilizer
  - 2. Potting Soil
  - 3. Steel, Aluminum, or Polyethylene Edging
  - 4. Root Barrier
- D. Submit digital photographs of all plant materials for Landscape Architect approval PRIOR TO DELIVERY to the site.
- E. File Certificate of Inspection of plant material by state and federal authorities with Landscape Architect.
- F. File the Grower's and/or State Certificate of Inspection of plant material to the Landscape Architect two (2) weeks minimum before commencement of work.
- G. By providing a bid on these Landscape Contract Documents, the Landscape Contractor is certifying that all plant materials as specified herein is available and will be provided to this project.
- H. Any substitutions in size and/or plant material species must be approved by the Landscape Architect in writing PRIOR TO PROCUREMENT AND/OR DELIVERY TO THE PROJECT SITE. All plants will be subject to the acceptance by the Landscape Architect BEFORE planting can begin.
- I. **INSTALLATION PERIOD:** The contractor is responsible for maintaining in full, all planting areas (including watering, spraying, mulching, mowing, fertilizing, etc.) until the job is accepted, in full, at the end of the installation phase by the Owner and Landscape Architect. Contractor to request inspection of project in writing at end of installation period. Landscape Architect and Owner acceptance shall initiate the establishment period.
- J. **ESTABLISHMENT PERIOD:** Contractor to guarantee, maintain, replace failed plant materials, and water plant material for a ninety (90) day establishment period following date of installation period completion. Contractor to request inspection of project in writing after ninety (90) day establishment period. Landscape Architect and Owner acceptance shall allow the the contractor to request the guarantee period phase start.
- K. **GUARANTEE PERIOD:** If all work is satisfactory and complete in accordance with the conditions of the contract documents, the contractor shall request in writing an acknowledgment of substantial completion from the Owner and Landscape Architect. Acknowledgment of substantial completion constitutes the beginning of the one (1) year. Contractor to notify the Landscape Architect ten (10) business days prior to end of guarantee guarantee to schedule a site review with the Landscape Architect and Owner of plant material at which time a final determination of plant health and replacement of failed plant materials as determined by the Landscape Architect will be identified at no cost to the project.

A. PREPARATION FOR DELIVERY:

1. Balled and burlrapped (B&B) plants: dig and prepare shipment in a manner that will not damage roots, branches, shape, and future development.
2. Container grown plants: deliver plants in containers sufficiently rigid to hold ball shape and protect root mass during shipping.
3. All rootballs shall conform to the size standards set forth in "American Standards for Nursery Stock".

B. DELIVERY:

1. Deliver packaged materials in sealed containers showing weight, analysis and name of manufacturer. protect materials from deterioration during delivery and while stored at site.
2. Do not deliver more plant materials than can be planted in one day unless adequate storage and watering facilities are available on the job site.
3. Storage of materials and equipment at the job site will be at the risk of the Landscape Contractor. The Owner WILL NOT be held responsible for theft or damage unless negligence is apparent as determined by the Landscape Architect. The Landscape Architect shall make the final determination of all responsibilities and remedies.
4. If balled plants cannot be planted within 24-hours after delivery to site, protect root balls by heeling in with saw dust or other approved material.
5. Protect with cloth or other approved means of "windburn" prevention during delivery to prevent damage to root ball or desiccation of leaves. Contractor to field verify all deliveries and condition of materials PRIOR TO UNLOADING. All plant materials that are damaged or not conforming to specifications are to be rejected and removed from the site immediately. Any replacement of rejected material due to not meeting standards of care as determined by the Landscape Architect will be replaced at no cost to the project.
6. Contractor shall take all due care and implement safe guards during transit to not bruise trunks, break branches or fronds, and prevent unnecessary structural stress to the plant material. Plant material not meeting standards of care and damaged as determined by the Landscape Architect will be replaced at no cost to the project.
7. Notify the Landscape Architect of delivery schedule 48-hours in advance so plant material may be observed upon arrival at job site.
8. Remove rejected plant material IMMEDIATELY from site upon instruction to do so.

A. **PLANTING RESTRICTIONS:**

1. Perform actual planting only when weather and soil conditions are suitable in accordance with locally accepted practice.
2. The Landscape Contractor shall field verify all information above and below ground, prior to initiating planting installation.
3. The Landscape Contractor shall field stake the location of all plant material prior to initiating installation for the review and acceptance of the Landscape Architect PRIOR TO commencement of plant installation.

B. **PROTECTIONS:**

1. DO NOT move equipment over existing or newly placed structures without approval of Landscape Architect, Owner, and General Contractor.
2. Provide board-roading and sheeting as required to protect paving and other improvements from damage.
3. IN NO WAY shall any trees, plants, ground cover or seasonal color obstruct drainage or block a 2% minimum positive slope away from buildings.
4. All existing planting shall remain intact and undisturbed unless otherwise noted on the plans. The Landscape Contractor shall install a 4'0" height orange nylon or chain link type fence affixed with nails or staples to sturdy posts (metal fence stakes or 2x4 wood, set to a depth of 2'-0" minimum) surrounding all existing vegetation and/or vegetation to be protected and relocated. Fencing to be installed in the Critical Protection Zone - the area surrounding a tree within a circle described by a radius of one (1) foot for each inch of tree trunk diameter measured at 54" above finished grade (for groups of trees, locate fence between trees and construction activity) - the fence shall be located to protect a minimum of 75% of the critical protection zone. Shrubs and groundcover vegetation shall have a minimum 5.0' buffer between fence and construction zone. No construction debris, vehicles, chemicals, or other construction activity shall be allowed within the root zone and/or critical protection zone, either directly or indirectly.

C. **UTILITIES:**

1. Determine locations of underground utilities and perform work in a manner which will avoid possible damage. Hand excavate where required to minimize possibility of damage to underground utilities.
2. Contractor shall acquaint himself with all site conditions. Where excavation is required, the contractor shall promptly notify the local public works department and underground utility locating entity, power company, and any other utilities (gas companies, cable tv, phone, etc.) forty-eight (48) hours minimum prior to construction locations. Failure to do so will make the contractor operation and prior to any connection

4. The contractor shall comply with Florida State Statute 553.81 "Protection of Underground Pipelines" for projects located within the State of Florida.
5. Should the Landscape Contractor cause damage to any utilities, necessary repairs shall be made as quickly as practicable, at the Landscape Contractor's expense, under supervision of the Landscape Architect and/or Owner.
6. Maintain grade stakes set by others until removal is mutually agreed upon by parties concerned.
7. Coordinate landscape installation work with the irrigation contractor to prevent damage to underground sprinkler systems. Inspect irrigation system and ensure that adequate water is available before beginning planting operations. Irrigation systems will not provide sufficient quantities of water for newly planted materials. The landscape contractor is responsible for deep root hand watering.

- C. Warrant plants and trees for one (1) year after final acceptance. Replace dead materials and materials not in vigorous, thriving condition as soon as weather permits and/or upon notification by Landscape Architect. Replace plants, including trees, which in the opinion of Landscape Architect have partially died thereby damaging shape, size, or symmetry.
- D. Replace plants and trees with same kind and size as originally planted, at no cost to Owner. Provide one (1) year warranty on replacement plants. These should be replaced at start of next planting or digging season. In such cases, remove dead trees immediately. Protect irrigation system and other piping conduit or other work during replacement. Repair any damage immediately.
- E. Warranty excludes replacement of plants after final acceptance because of injury by storm, drought, drowning, hail, freeze, insects, wildlife, or diseases.
- F. At the end of the warranty period, staking and guying materials shall be removed from the site by the Landscape Contractor unless otherwise agreed upon through written acceptance by the Landscape Architect or Owner.

1.9. GENERAL MAINTENANCE DURING ESTABLISHMENT:

- A. Water must be made available on site. Provide necessary hoses and other watering equipment or vehicles required to complete work.
- B. Until final acceptance, maintain plantings and trees by watering, cultivating, mowing, weeding, spraying, cleaning and replacing as necessary to keep landscape in a vigorous, healthy condition and rake bed areas as required.
- C. A written notice requesting final inspection and acceptance should be submitted to Landscape Architect seven (7) working days prior to completion. At that time Owner and Landscape Architect will prepare a final punch list to be reviewed with the Landscape Contractor. When such project is deemed complete by the Landscape Architect, an on-site inspection by Owner, Landscape Contractor and Landscape Architect will be completed prior to written acceptance.
- D. Following final acceptance, maintenance of plant material will become the Owner's responsibility. The contractor shall provide Owner with a recommended maintenance program.

- A. QUANTITIES: The drawings, plant list, and specifications are complementary: anything called for on one and not the other is as binding as if shown and called for on both. The plant schedule is an aid to bidders only. Confirm all quantities on plans PRIOR TO procurement and/or installation.
- B. The Landscape Contractor must notify the Landscape Architect thirty (30) days BEFORE INSTALLATION if plant material cannot be found meeting the specifications required in the contract documents.
- C. The Landscape Contractor is responsible to meet the plant material specifications provided in the Contract Documents. Plant material specifications provided ARE A MINIMUM. All minimum specifications shall be met and if any one of the specifications must be increased so that other collective minimum requirements are met, it is the contractors responsibility to do so.
- E. Plants shall be equal to well formed No. 1 grade or better (unless otherwise noted in the drawings), symmetrical, heavily branched with an even branch distribution, densely foliated and/or budded, and a strong, straight, distinct leader where this is characteristic of the species. Plants shall possess a normal balance between height and spread. The Landscape Architect will be the final arbiter of acceptability of plant form. Plants deemed unacceptable by the Landscape Architect either before or after planting shall be removed at the expense of the Landscape Contractor and replaced with acceptable plants as specified.
- E. Plants shall be healthy and vigorous, free of disease, insect pests and their eggs, and larvae.
- F. Plants shall have a well-developed fibrous root system.
- G. All root balls shall conform to the size standards set forth in the "American Standards for Nursery Stock".
- H. Plants shall be free of physical damage such as scrapes, broken or split branches, scars, bark abrasions, sun scalds, fresh limb cuts, disfiguring knots, or other defects.
- I. Pruning of all trees and shrubs, as directed by Landscape Architect, shall be executed by Landscape Contractor at no additional cost to the owner.
- J. Plants shall meet the sizes indicated on the plant list. Where a size or caliper range is stated, at least 80% of the material shall be closer in size to the top of the range stated.
- K. Plants indicated "B&B" shall be balled and burlapped. Plants shall be nursery grown unless otherwise specified in plant list. Balls shall be firm, neat, slightly tapered and well burlapped. Non-biodegradable ball wrapping material will not be accepted. Any tree loose in the ball or with broken ball at time of planting will be rejected. Balls shall be ten (10") inches in diameter for each one (1") inch of trunk diameter, measured six (6") inches above ball. Trees grown in grow bags or grow bag type material must have the grow bag removed entirely prior to planting.
- L. Container grown plants shall be well rooted and established in the container in which they are growing. They shall have grown in the container for a sufficient length of time for the root system to hold the planting medium when taken from the container, but not long enough to become root bound.

A. **ORGANIC AMENDMENT:** Well decomposed, stable, weed free organic compost. The product shall contain no substances toxic to plants, shall be free of nematodes, and shall be reasonably free (<1% dry weight) of man-made foreign matter. The compost will possess no objectionable odors and shall not resemble the raw material from which it is derived. The product shall have a Ph of between 5.3 and 6.5 (as determined in accordance with ASTM E70), a soluble salt concentration of less than 10 ds/m, and an organic matter content of 30-65% dry weight, with 98% passing through a 3/4" screen.

B. **FLORIDA PEAT** shall be sterilized to make it free of all viable nut grass and other undesirable weeds.

C. **PRE-MIXED SOILS** will be considered "as equals" when samples are submitted for the Landscape Architect's review with manufacturer's data and laboratory test reports. Samples not accompanied by the manufacturer's data and laboratory test reports will not be reviewed and are rejected.

D. **SANDY LOAM TOPSOIL:**

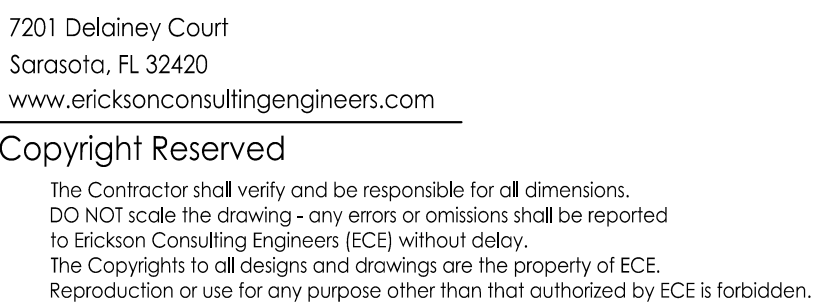
1. Friable, fertile, dark, loamy soil, free of clay lumps, subsoil, stones, and other extraneous material and reasonably free of weeds and foreign grasses. Soil containing nut grass and other undesirable weeds shall be rejected.

Consultants

---



3510 Kraft Road, Suite 200  
Naples, FL 34105  
[www.stantec.com](http://www.stantec.com)



# Naples Beach Restoration & Water Quality Improvement Project

# City of Naples

# Landscape General Notes / General Site and Construction Notes

177310606

Revision

0

N/A

---

Drawing No.

LP001











## PART 1 - GENERAL (LAWNS, TURF, AND GRASSES)

A. Furnish all labor, tools, transportation, materials, equipment, supervision, etc., required to adequately establish a dense lawn of permanent grasses, free from lumps and depressions as indicated by plans and specifications. Replace any part of the area failing to show uniform cover until a dense lawn is established. The cost of miscellaneous labor and materials for topsoil, weeding, tilling, pest control, fertilizing, etc., are not separate pay items and shall be included in the bid price for lawns, turf, and grasses.

A. Payment for grass planting or hydro-seeding for general turf areas will be made after final acceptance based on the method of payment stated in the bid proposal. If based on area units, such as square feet or square yards, payment will be based on actual field measurements. The contractor shall seed, fertilize, maintain and establish a healthy stand of grass before acceptance or payment for grass will be considered by the Landscape Architect and Owner.

**MAINTENANCE OF GRASS:**

A. The contractor shall maintain the grass until final acceptance. Such maintenance shall include spraying, weeding, cultivation, fertilizing, watering, mowing, disease and insect control, top dressing low spots, plus any procedures consistent with horticultural practice necessary to insure normal, vigorous, and healthy grass.

A. WATER: Water must be made available on site. Provide necessary hoses and other watering equipment or vehicles required to complete work.

B. Lawn areas will be left within 0.1 foot of finish grade by other trades. Fine grading, raking and smoothing will be the responsibility of the landscape contractor. It is the landscape contractors responsibility to verify finish grade elevations prior to final landscape and irrigation installation. Failure to verify finish grade elevations may result in rejection of all installed elements and replacement of plant materials, irrigation etc. after grading remediation at no cost to the Owner.

A. SEEDING / HYDRO-SEEDING (if applicable and called for in the contract documents)

1. NORTH / CENTRAL FLORIDA: Complete only between May 1 to August 31 under favorable conditions (warm season).
2. SOUTH FLORIDA: Complete only between April 1 to September 15 under favorable conditions (warm season).

B. SEEDING/HYDROMULCHING (if applicable and called for in the contract documents):

1. Complete seeding/hydromulching only between September 1 to April 30, except at front of project, as determined by Landscape Architect and Owner, under favorable climatic conditions.

C. SODDING (if applicable and called for in the contract documents):

1. NORTH / CENTRAL FLORIDA: May 1 to August 31 (warm season) and September 1 to April 30 (cool season) with overseed of perennial rye.
2. SOUTH FLORIDA: April 1 to September 15 (warm season) and September 16 to April 30 (cool season)(use nursery overseeded sod in cool season, if available).

D. QUALIFICATIONS: Due to unseasonable weather, the above dates may vary; however, do not proceed with grassing operations beyond these dates without assuming full responsibility for a stand of grass.

A. The work will be accepted only when a completed, undamaged stand of grass is established as determined and approved by the Landscape Architect and as accepted by the Owner.

- A. Topsoil shall be friable, fertile, dark, loamy soil, free of clay lumps, subsoil, stones and other extraneous material. Topsoil containing weeds and foreign grasses shall be rejected.
- B. Topsoil shall be natural, fertile, agricultural soil capable of sustaining vigorous plant growth. It shall be of uniform composition throughout, with admixture of subsoil. It shall be free of stones, lumps, live plants and their roots, sticks, and other extraneous matter. Spread topsoil mixture to minimum depth of three (3) inches throughout all areas and six (6) inches in all shrub and groundcover beds. Remove all rocks and other objects over one (1) inch in diameter.
- C. Smooth all prepared topsoil to three (3) inches below top of surrounding pavement edges. Finish grade all prepared topsoil areas to a smooth, even surface assuring positive drainage away from the structures and eliminate any low areas which may collect water.
- D. Topsoil mixture to six (6) inches below grade in areas to be sodded.
- E. Topsoil shall not be extremely acidic or alkaline, nor contain toxic substances which may be harmful to plant growth. The Ph shall be in the range of 5.5 to 6.5. if necessary, the contractor shall apply the appropriate soil amendments adjusting soil Ph to assure a Ph range of 5.5 to 6.5.
- F. Physical properties as follows:
  - 1. Clay - between 7-27 percent
  - 2. Silt - between 28-50 percent
  - 3. Sand - less than 52 percent

A. GRASS SEED: Where called for in the contract documents, provide extra fancy, hulled and treated, lawn type seed, delivered to site in original, unopened containers meeting requirements of Florida state seed law. Minimum purity germination 90 percent.

B. SOD: Where called for in the contract documents, provide solid sod, live, rich, dark green in color, free of foreign grasses, weeds, nutgrass, cut with a full 1 inch of heavy soil covering roots. Deliver to site in 16" x 24" rectangle slabs or 24 inch wide rolls. Do not stack for more than 24 hours between time of cutting and time of delivery. Sod shall have tight, staggered joints. Sand all joints filling voids and roll to consistent surface free of clumps, dips, ridges, etc. The Landscape Architect and Owner shall review final sod installation for acceptance upon notification of completion by contractor. Areas not meeting specifications as determined by the Landscape Architect shall be removed and replaced at no additional cost to the project.

A. Fertilizer shall be organic base, uniform in composition, dry and free flowing. deliver fertilizer to site in original, unopened containers, each bearing manufacturer's guaranteed statement of analysis.

B. First application: 12-12-12 element percentage with minimum 8% sulfur and 4% iron, plus micro nutrients.

- 2.4 MULCH FIBER (if applicable and called for in the contract documents)
  - A. WOOD CELLULOSE FIBER FOR HYDROMULCH: Enviro-Gro Cellulose Fiber Hydraulic Mulch or approved equal with green color additive.
- 2.5 TACKIFIER (if applicable and called for in the contract documents):
  - A. Natural, non-asphaltic vegetable gum with gelling and hardening agents.
- 2.6 SHARP SAND:
  - A. Clear, washed sand (fine aggregate) per ASTM C-33.
- 2.7 HERBICIDE:
  - B. Apply an approved herbicide according to manufacturer's rate and specification within limits of all areas to be planted. Provide all manufacturer data to Landscape Architect for approval prior to application. Protect existing plants to remain from over-spray or spray within root zone. Contractor to ensure total weed eradication.
  - C. Scarify subsoil to a depth of three (3) inches then apply an approved pre-emergent herbicide in accordance with manufacturer's rate and specifications. Provide all manufacturer data to Landscape Architect for approval prior to application. Follow manufacturer's recommended waiting period prior to new landscape installation.

- A. Scarify lawn areas where excessive compaction is greater than 85% standard proctor to a depth of 6-inches by discing or rototilling. Repeat cultivation as required to thoroughly loosen soil.
- B. Leave areas free of weeds and ready for final grading.
- C. Provide barricades around scarified areas to prevent compaction by construction vehicles.

- A. No topsoil shall be placed until subgrade is approved by Landscape Architect.
- B. Contractor to furnish and spread topsoil on lawn areas to a depth of six (6) inches unless otherwise noted in the contract documents.
- C. Work topsoil to a smooth uniform surface and compact firmly.
- D. Feather topsoil into undisturbed areas creating a smooth, even transition. Spread additional topsoil in undisturbed areas to eliminate water ponding.

- A. Remove from site and legally dispose of stones 1-inch and larger, sticks, roots and other debris exposed during this operation.
- B. Provide finish grading leaving surface uniform without depressions and undulations, graded approximately 1 1/2-inch below paving.
- C. Secure approval from the Landscape Architect prior to proceeding with grading or planting operations.
- D. It is the landscape contractors responsibility to verify finish grade elevations prior to final landscape and irrigation installation. Failure to verify finish grade elevations may result in rejection of all installed elements and replacement of plant materials, irrigation etc. after grading remediation at no cost to the Owner.

A. Apply herbicide to remove any remaining weeds. This work is to be performed by a licensed pesticide applicator following the manufacturer's recommendations.

- A. Place first application with hydromulch at rate of 12 pounds per 1,000 square feet.
- B. Uniformly distribute second application using a rotary type fertilizer spreader 3-4 weeks after first application at 12 pounds per 1,000 square feet.

- A. At the time of hydromulch/seeding, soil shall be moist but not muddy, and wind velocity shall not exceed ten (10) miles per hour. Add water if required to moisten soil.
- B. Hydromulch seed uniformly at the rate of 2 pounds of Bermuda Grass seed per 1,000 square feet or other rate as specified on plans.
- C. Add tackifier to hydromulch mix for slopes 5:1 or greater at the rate of 1 lb. per bag of mulch.
- D. Use a 4' x 8' batter board against bed areas.

A. Seed uniformly at a rate 125 pounds of Bermuda Grass seed per acre. Use grass drill, brilliant seeder, or viking roller.

SOLID SOD (if applicable and called for in the contract documents):

A. SOLID SOD: Plant grass by hand, edge to edge with staggered joints. Top dress with sharp sand raked in carefully to fill joints. Roll to eliminate undulations and provide complete soil contact. All grass installed during the winter months (September-April) shall be overseeded before installation (not overseeded at site.)

B. FERTILIZATION: Fertilize immediately after grass is planted at rate of 4 lbs. per 1,000 square feet. Repeat fertilizing at the same rate 3-4 weeks later.

Modify application rate if recommended by soil testing lab.

A. WATERING:

1. Water lawn areas immediately after grassing operation.
2. Continue watering as required to keep soil uniformly moist to a minimum depth of four (4) inches.
3. Be alert to over-watering newly planted grass, particularly in heavy clay soils.

1. Correct any erosion that may occur during the establishment of grass.
2. Reseed (sod) any areas not showing sufficient growth within 3 weeks after initial grassing. Continue seeding (sodding) until a stand of grass is achieved at no additional cost to the project.
3. A stand of grass will be defined as a uniform cover of actively growing turf.

1. Mow lawn areas weekly until a stand of grass is achieved. Begin mowing when the lawn reaches a height of 3-inches set mower to cut at 2-inches. a minimum of two mowings is required.
2. Weed lawn areas until acceptance, removing all foreign vegetation, either by hoeing or pulling. If approved by the Landscape Architect, herbicide spot treatments may be used.

A. During work, keep premises neat and orderly, including organization of storage areas. Remove trash, including debris resulting from removing weeds and rocks from site daily as work progresses. Keep paved areas clean by sweeping or hosing.

7201 Delaney Court  
Sarasota, FL 32420  
[www.ericksonconsultingengineers.com](http://www.ericksonconsultingengineers.com)

The Contractor shall verify and be responsible for all dimensions.  
DO NOT scale the drawing - any errors or omissions shall be reported  
to Erickson Consulting Engineers (ECE) without delay.  
The Copyrights to all designs and drawings are the property of ECE.  
Reproduction or use for any purpose other than that authorized by ECE is forbidden.

CITY OF NAPLES  
735 8th St S  
NAPLES, FL.  
Naples Beach Restoration  
& Water Quality  
Improvement Project

# City of Naples

## Landscape General Notes / General Site and Construction Notes

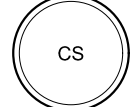

Project No.	Scale
177310606	N/A
Revision	Drawing No.
0	LP004



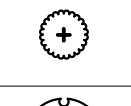
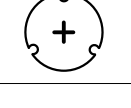






PLANT SCHEDULE

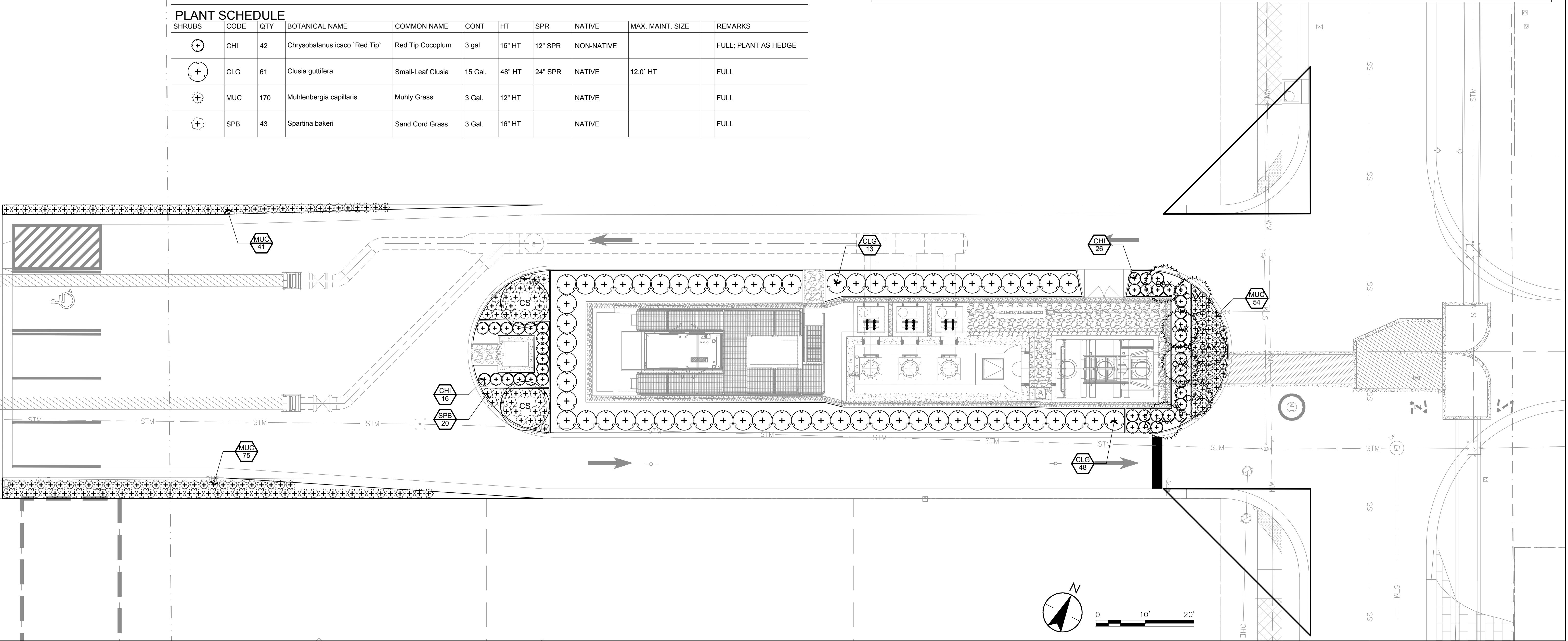
TREES	CODE	QTY	BOTANICAL NAME	COMMON NAME	CONTAINER	CALIPER	HEIGHT	SPREAD	NATIVE DESIGNATION	REMARKS
	CS	2	Conocarpus erectus 'Sericeus'	Silver Buttonwood	.		10.0' OA	4' SPR	NATIVE	Multi-Trunk; 3 Stem Min.; Good Branching Character
PALM TREES	CODE	QTY	BOTANICAL NAME	COMMON NAME	CONTAINER	CALIPER	HEIGHT	SPREAD	NATIVE DESIGNATION	REMARKS
	CAX	7	Coccothrinax argentata	Silver Thatch Palm	Field Grown		6.0' OA		NATIVE	

PLANT SCHEDULE

SHRUBS	CODE	QTY	BOTANICAL NAME	COMMON NAME	CONT	HT	SPR	NATIVE	MAX. MAINT. SIZE	REMARKS
	CHI	42	Chrysobalanus icaco 'Red Tip'	Red Tip Cocoplum	3 gal	16" HT	12" SPR	NON-NATIVE		FULL; PLANT AS HEDGE
	CLG	61	Clusia guttifera	Small-Leaf Clusia	15 Gal.	48" HT	24" SPR	NATIVE	12.0' HT	FULL
	MUC	170	Muhlenbergia capillaris	Muhly Grass	3 Gal.	12" HT		NATIVE		FULL
	SPB	43	Spartina bakeri	Sand Cord Grass	3 Gal.	16" HT		NATIVE		FULL

LANDSCAPE INSTALLATION AND ESTABLISHMENT NOTES:

1. REGULAR IRRIGATION AFTER PLANTING IS ESSENTIAL FOR SURVIVAL AND ESTABLISHMENT OF ALL PLANT MATERIALS. ESTABLISHMENT IS THE AMOUNT OF TIME REQUIRED FOR PLANT MATERIALS TO GROW A SUFFICIENT ROOT SYSTEM TO SUPPORT GROWTH IN THEIR PLANTED ENVIRONMENT. REGULAR IRRIGATION AFTER PLANTING SHALL FOLLOW THE SCHEDULE GUIDELINES PER FLORIDA GRADES AND STANDARDS "BEST MANAGEMENT PRACTICES", APPENDIX A - PART FOUR FOR VITALITY AND ESTABLISHMENT OF PLANT MATERIALS.
2. CONTRACTOR SHALL PROVIDE THE NECESSARY HOSES AND OTHER WATERING EQUIPMENT OR VEHICLES REQUIRED TO COMPLETE WORK. THE WATER SOURCE SHALL BE POTABLE, SUITABLE FOR IRRIGATION, AND SHALL BE FREE FROM INGREDIENTS HARMFUL TO PLANT LIFE.
3. PERMIT REQUIREMENTS FOR A DESIGN-BUILD IRRIGATION SYSTEM IS THE RESPONSIBILITY OF THE CONTRACTOR.
4. IRRIGATION SHALL BE INSTALLED TO MEET OR EXCEED APPENDIX F - "PROPOSED CONSTRUCTION BUILDING CODES FOR TURF AND LANDSCAPE IRRIGATIONS SYSTEMS" OF THE FLORIDA BUILDING CODE, PLUMBING (LATEST EDITION), AND IN ACCORDANCE WITH ASTM D2855.
5. ALL DISTURBED GROUND COVER, LANDSCAPING, AND IRRIGATION SYSTEMS WITHIN AND ADJACENT TO THIS PROJECT SITE SHALL BE REPAIRED, REPLACED, OR RESTORED TO EXISTING CONDITIONS OR BETTER PER THE SPECIFICATIONS PROVIDED HEREIN. THE LANDSCAPE ARCHITECT AND/OR OWNER SHALL DETERMINE AREAS FOR REMEDIATION, AND IT IS THE CONTRACTORS RESPONSIBILITY TO REPORT AREAS AFFECTED BY CONSTRUCTION ACTIVITIES TO THE LANDSCAPE ARCHITECT AND OWNER WITHIN 24 HOURS.



I:\1773\0606\Drawings\1773-0606\1773-0606.dwg  
2022.04.25 12:53 PM STP: Stanton, R

Revision	By	Appd.	YY.MM.DD



90% CD Submittal - Owner Directed Changes  
90% CD Submittal

KNB FAD 2022.04  
KNB FAD 2022.04  
By Appd. YYYY.MM.DD

Consultants



3510 Kraft Road, Suite 200  
Naples, FL 34105  
www.stantec.com



7201 Delaney Court  
Sarasota, FL 32420  
www.ericksonconsultingengineers.com

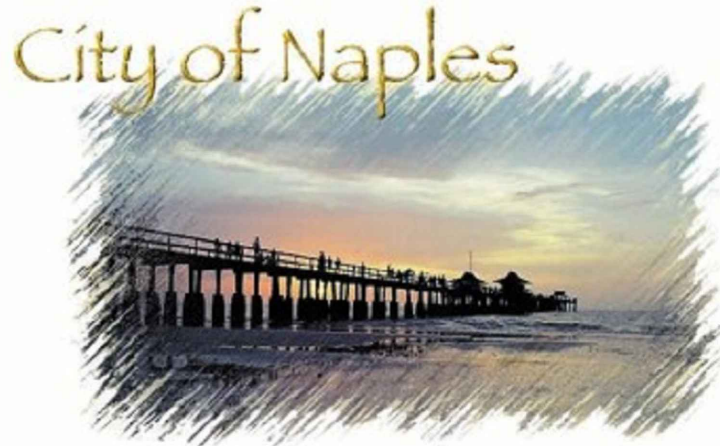
Copyright Reserved

The Contractor shall verify and be responsible for all dimensions.  
DO NOT scale the drawing - any errors or omissions shall be reported to Erickson Consulting Engineers (ECE) without delay.  
The Copyrights to all designs and drawings are the property of ECE.  
Reproduction or use for any purpose other than that authorized by ECE is forbidden.

Client/Project

CITY OF NAPLES  
735 8th St S  
NAPLES, FL.  
Naples Beach Restoration  
& Water Quality  
Improvement Project

File Name: LP101.dwg



Title

Planting Plan, Plant Schedule, and  
Landscape Notes

Project No.

177310606

Revision

0

Scale


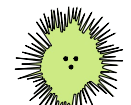
1"=10'

Drawing No.





LP101



PLANT SCHEDULE

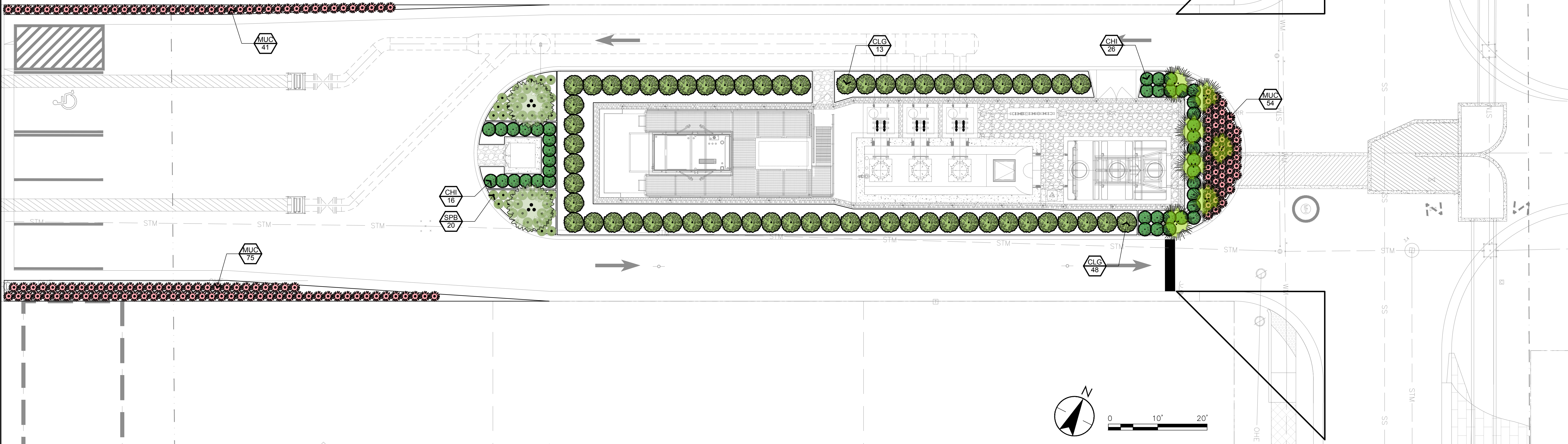
TREES	CODE	QTY	BOTANICAL NAME	COMMON NAME	CONTAINER	CALIPER	HEIGHT	SPREAD	NATIVE DESIGNATION	REMARKS
	CS	2	Conocarpus erectus 'Sericeus'	Silver Buttonwood	.		10.0' OA	4' SPR	NATIVE	Multi-Trunk; 3 Stem Min.; Good Branching Character
PALM TREES	CODE	QTY	BOTANICAL NAME	COMMON NAME	CONTAINER	CALIPER	HEIGHT	SPREAD	NATIVE DESIGNATION	REMARKS
	CAX	7	Coccothrinax argentata	Silver Thatch Palm	Field Grown		6.0' OA		NATIVE	

PLANT SCHEDULE

SHRUBS	CODE	QTY	BOTANICAL NAME	COMMON NAME	CONT	HT	SPR	NATIVE	MAX. MAINT. SIZE	REMARKS
	CHI	42	Chrysobalanus icaco 'Red Tip'	Red Tip Cocoplum	3 gal	16" HT	12" SPR	NON-NATIVE		FULL; PLANT AS HEDGE
	CLG	61	Clusia guttifera	Small-Leaf Clusia	15 Gal.	48" HT	24" SPR	NATIVE	12.0' HT	FULL
	MUC	170	Muhlenbergia capillaris	Muhly Grass	3 Gal.	12" HT		NATIVE		FULL
	SPB	43	Spartina bakeri	Sand Cord Grass	3 Gal.	16" HT		NATIVE		FULL

LANDSCAPE INSTALLATION AND ESTABLISHMENT NOTES:

1. REGULAR IRRIGATION AFTER PLANTING IS ESSENTIAL FOR SURVIVAL AND ESTABLISHMENT OF ALL PLANT MATERIALS. ESTABLISHMENT IS THE AMOUNT OF TIME REQUIRED FOR PLANT MATERIALS TO GROW A SUFFICIENT ROOT SYSTEM TO SUPPORT GROWTH IN THEIR PLANTED ENVIRONMENT. REGULAR IRRIGATION AFTER PLANTING SHALL FOLLOW THE SCHEDULE GUIDELINES PER FLORIDA GRADES AND STANDARDS "BEST MANAGEMENT PRACTICES", APPENDIX A - PART FOUR FOR VITALITY AND ESTABLISHMENT OF PLANT MATERIALS.
2. CONTRACTOR SHALL PROVIDE THE NECESSARY HOSES AND OTHER WATERING EQUIPMENT OR VEHICLES REQUIRED TO COMPLETE WORK. THE WATER SOURCE SHALL BE POTABLE, SUITABLE FOR IRRIGATION, AND SHALL BE FREE FROM INGREDIENTS HARMFUL TO PLANT LIFE.
3. PERMIT REQUIREMENTS FOR A DESIGN-BUILD IRRIGATION SYSTEM IS THE RESPONSIBILITY OF THE CONTRACTOR.
4. IRRIGATION SHALL BE INSTALLED TO MEET OR EXCEED APPENDIX F - "PROPOSED CONSTRUCTION BUILDING CODES FOR TURF AND LANDSCAPE IRRIGATIONS SYSTEMS" OF THE FLORIDA BUILDING CODE, PLUMBING (LATEST EDITION), AND IN ACCORDANCE WITH ASTM D2855.
5. ALL DISTURBED GROUNDCOVER, LANDSCAPING, AND IRRIGATION SYSTEMS WITHIN AND ADJACENT TO THIS PROJECT SITE SHALL BE REPAIRED, REPLACED, OR RESTORED TO EXISTING CONDITIONS OR BETTER PER THE SPECIFICATIONS PROVIDED HEREIN. THE LANDSCAPE ARCHITECT AND/OR OWNER SHALL DETERMINE AREAS FOR REMEDIATION, AND IT IS THE CONTRACTORS RESPONSIBILITY TO REPORT AREAS AFFECTED BY CONSTRUCTION ACTIVITIES TO THE LANDSCAPE ARCHITECT AND OWNER WITHIN 24 HOURS.



I:\1773\0606\Drawings\0606-01\0606-01-01\0606-01-01-01\0606-01-01-01\0606-01-01-01\0606-01-01-01\0606-01-01-01\0606-01-01-01.dwg  
2022.04.25 12:10:50 PM S:\0606-01\0606-01-01\0606-01-01-01\0606-01-01-01\0606-01-01-01\0606-01-01-01\0606-01-01-01\0606-01-01-01.dwg

Revision	By	Appd.	YY.MM.DD


90% CD Submittal - Owner Directed Changes  
90% CD Submittal

Consultants



3510 Kraft Road, Suite 200  
Naples, FL 34105  
www.stantec.com



7201 Delaney Court  
Sarasota, FL 32420  
www.ericksonconsultingengineers.com

Copyright Reserved

The Contractor shall verify and be responsible for all dimensions.  
DO NOT scale the drawing - any errors or omissions shall be reported to Erickson Consulting Engineers (ECE) without delay.  
The Copyrights to all designs and drawings are the property of ECE.  
Reproduction or use for any purpose other than that authorized by ECE is forbidden.

Client/Project

CITY OF NAPLES  
735 8th St S  
NAPLES, FL.  
Naples Beach Restoration  
& Water Quality  
Improvement Project

File Name: LP101.dwg



Title

Planting Plan - Color Exhibit

Project No. 177310606  
Revision 0

Scale 1"=10'

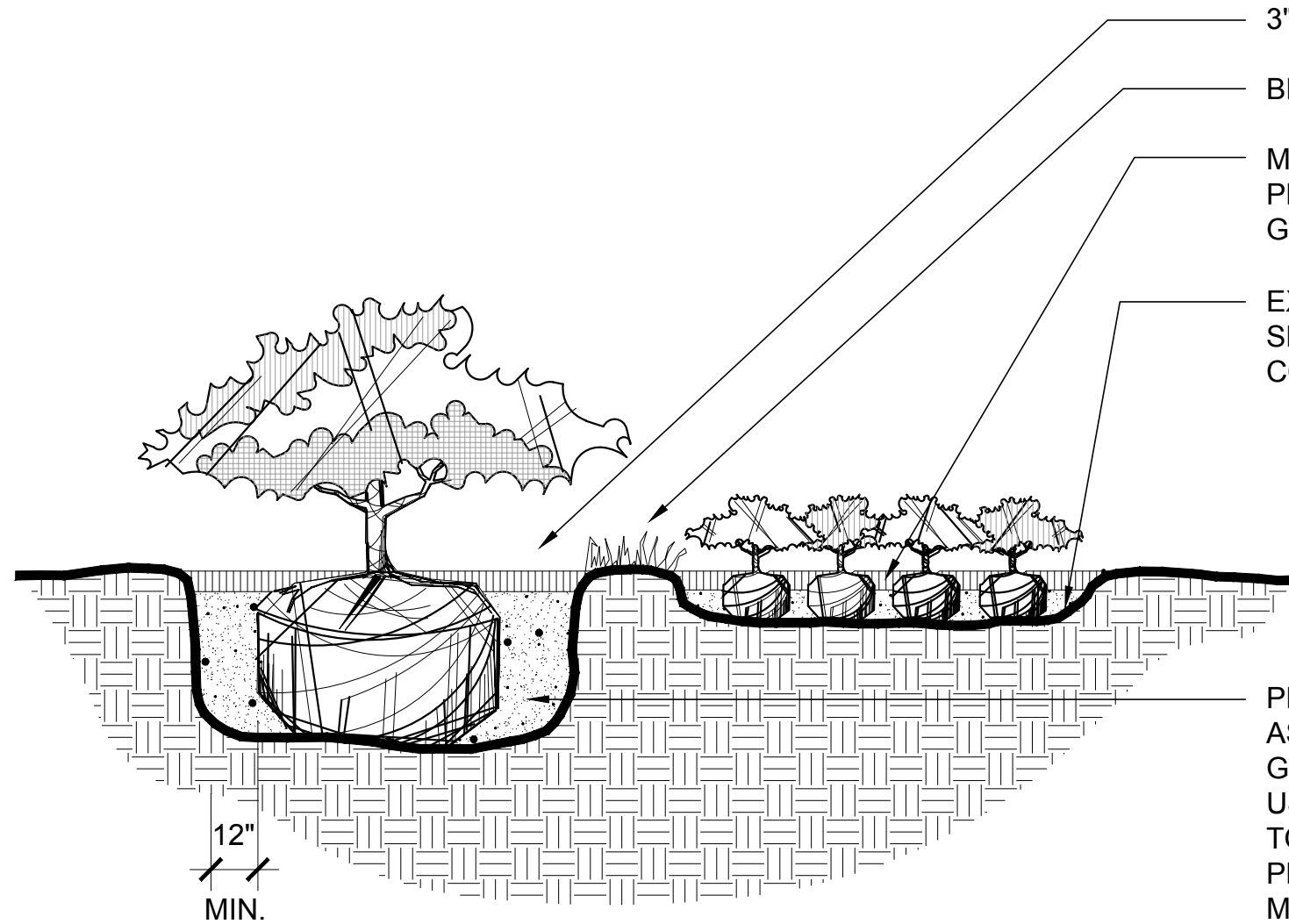
Drawing No. LP102







NOTE:  
CONTRACTOR SHALL ASSURE  
FREE DRAINAGE/PERCOLATION  
OF ALL PLANTING PITS/BEDS  
PRIOR TO INSTALLATION.



NOTE: PLANT MATERIAL SHALL  
BE PLANTED 2" HIGH WITH  
SOIL MOUNDING UP TO THE  
TOP OF ROOT BALL.

3" MINIMUM OF MULCH

BERM SOIL TO HOLD WATER

MINIMUM DEPTH OF 12"  
PLANTING SOIL FOR  
GROUND COVER BED.

EXCAVATE ENTIRE BED  
SPECIFIED FOR GROUND-  
COVER BED.

FINISHED GRADE  
(SEE GRADING PLAN)

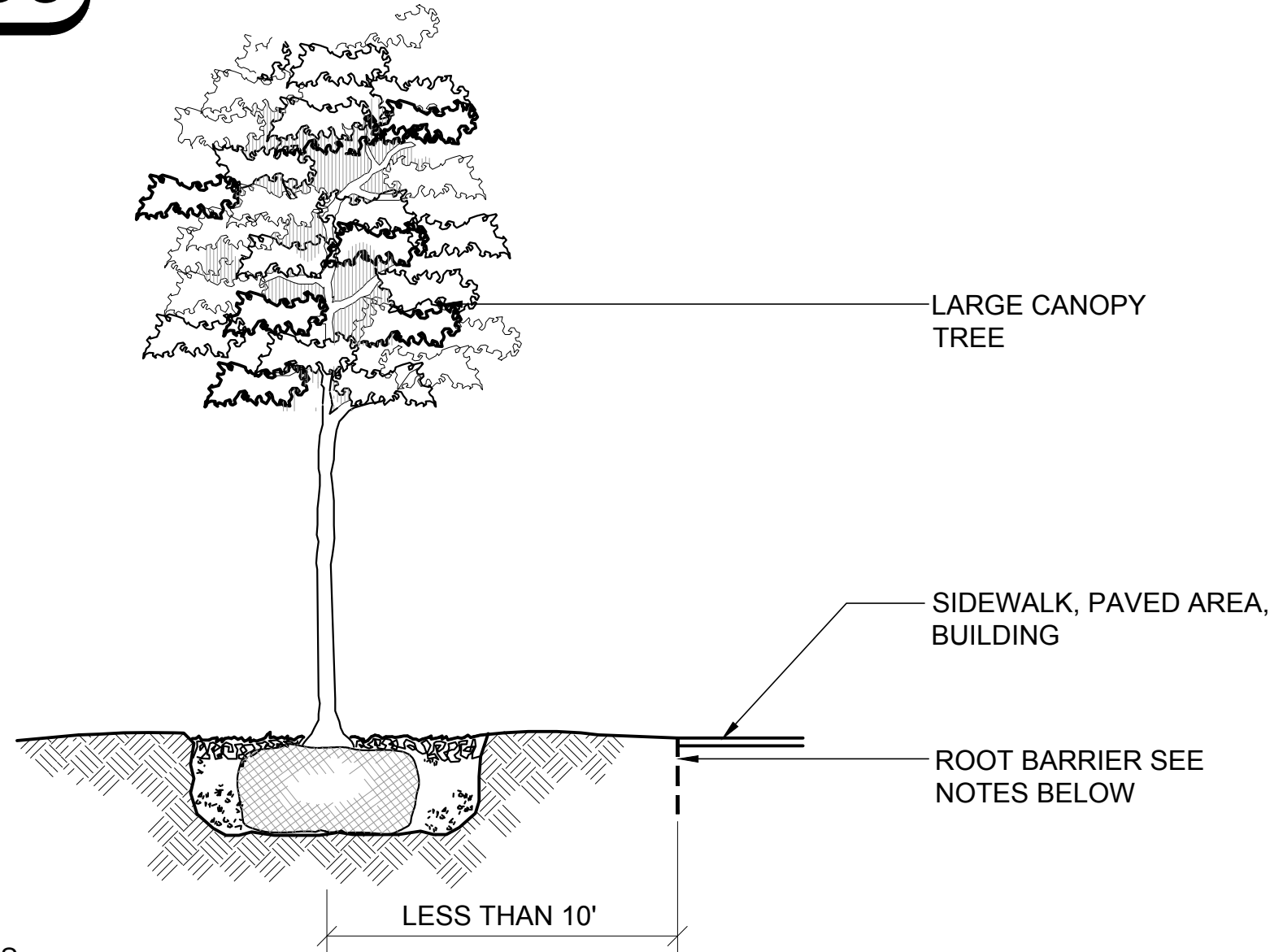
PREPARED PLANTING SOIL  
AS SPECIFIED. NOTE: WHEN  
GROUNDCOVERS AND SHRUBS  
USED IN MASSES, ENTIRE BED  
TO BE EXCAVATED TO RECEIVE  
PLANTING SOIL AND PLANT  
MATERIAL - EXCEPT WHERE  
SPECIFIED.

### Shrub and Groundcover

C3

SCALE: 1" = 1'-0"

FILE NAME: DT-ShrubGround.dwg



#### NOTES:

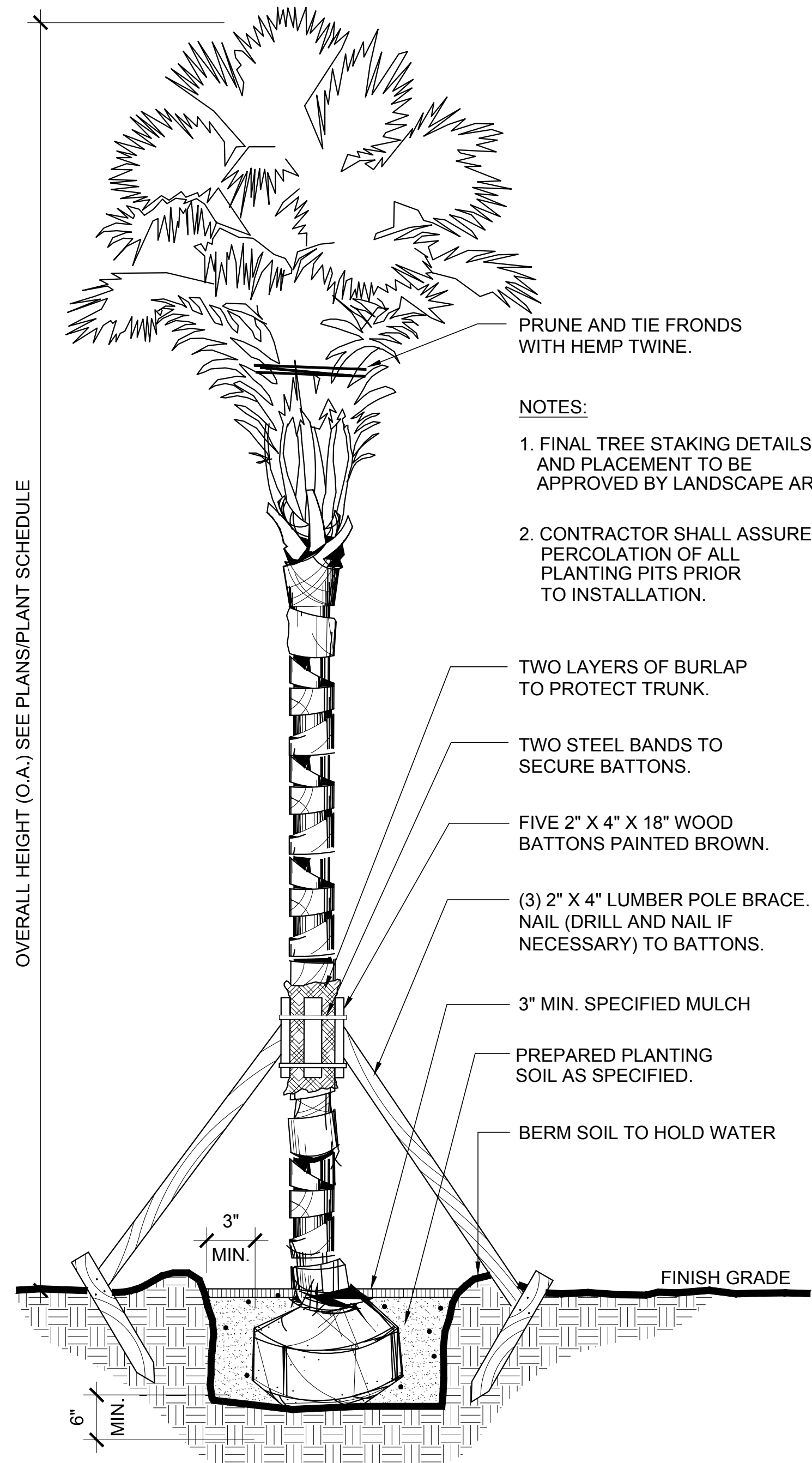
1. A SOLID PANEL 48" DEPTH ROOT BARRIER DEVICE SHALL BE EMPLOYED WITHIN A 20.0' RADIUS OF A TREE WHEN TREES ARE WITHIN 10.0' OF ADJACENT HARDSCAPE SURFACES AND SHALL RUN PARALLEL WITH PAVED AREA OR BUILDING TO A DISTANCE 20.0' OUT EITHER DIRECTION FROM TRUNK.
2. USE UB48-2 POLYETHYLENE SOLID PANEL ROOT BARRIER BY DEEPROOT OR APPROVED EQUAL.
3. ROOT BARRIERS SHALL BE 48" DEPTH AND SHALL EXTEND UP TO FINISHED GRADE.
4. NO TREES ARE TO BE PLANTED WITHIN 5 FEET OF EXISTING OR PROPOSED UNDERGROUND UTILITIES. WHERE A CONFLICT EXISTS, NOTIFY THE LANDSCAPE ARCHITECT FOR RESOLUTION PRIOR TO CONTINUED INSTALLATION.
5. USE PHYSICAL ROOT BARRIER WHEN TREES ARE WITHIN 10 FEET OF UNDERGROUND UTILITIES. ROOT BARRIER TO BE NO CLOSER THAN 5 FEET TO UNDERGROUND UTILITY PIPES.
6. ALL ROOT BARRIERS SHALL BE INSTALLED IN ACCORDANCE WITH MANUFACTURERS SPECIFICATIONS.

### Root Barrier

A3

SCALE: 1" = 1'-0"

DT-RootBarrier.dwg



#### NOTES:

1. FINAL TREE STAKING DETAILS AND PLACEMENT TO BE APPROVED BY LANDSCAPE ARCHITECT.
2. CONTRACTOR SHALL ASSURE PERCOLATION OF ALL PLANTING PITS PRIOR TO INSTALLATION.

### Palm Tree

A1

SCALE: 1/2" = 1'-0"

DT-WashPalm.dwg

I:\1773\0606\Drawings\Sheet\3-Info\System\active\landscape\sheet\LP501.dwg  
2022.04.25 12:50:57 PM  
177310606

Revision	By	Appd.	YY.MM.DD


90% CD Submittal - Owner Directed Changes	KNB	FAD	2022.04
90% CD Submittal	KNB	FAD	2022.04
	By	Appd.	YYYY.MM.DD

Consultants



3510 Kraft Road, Suite 200  
Naples, FL 34105  
www.stantec.com



7201 Delaine Court  
Sarasota, FL 32420  
www.ericksonconsultingengineers.com


Copyright Reserved

The Contractor shall verify and be responsible for all dimensions.  
DO NOT scale the drawing - any errors or omissions shall be reported to Erickson Consulting Engineers (ECE) without delay.  
The Copyrights to all designs and drawings are the property of ECE.  
Reproduction or use for any purpose other than that authorized by ECE is forbidden.

Client/Project

CITY OF NAPLES  
735 8th St S  
NAPLES, FL.  
Naples Beach Restoration  
& Water Quality  
Improvement Project

File Name: LP501.dwg



Title

Planting Details

Project No. 177310606

Scale As Shown

Revision 0

Drawing No. LP502