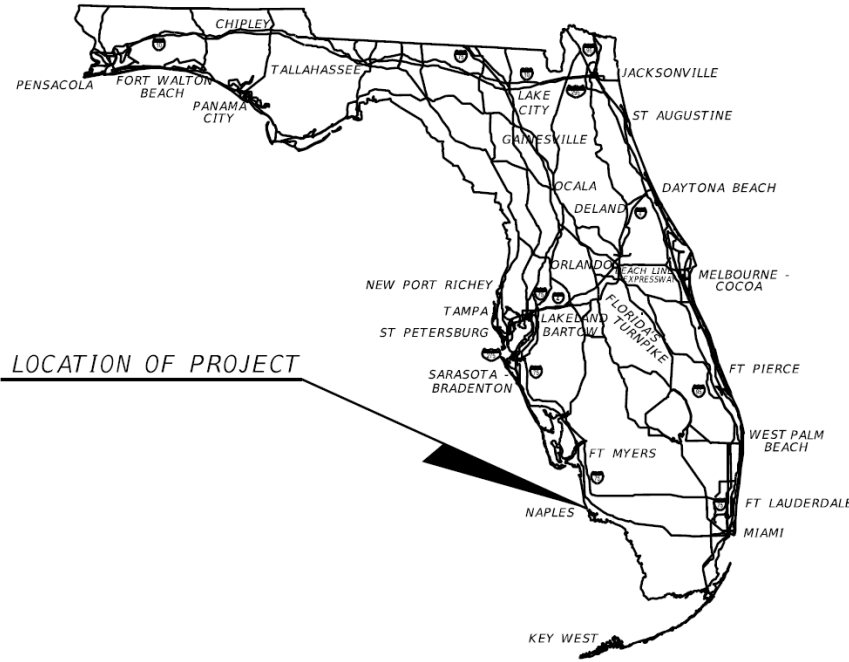


ATTACHMENT A - PROJECT PLAN DOCUMENT



Plan Sheet Legend

- Proposed Street Light
- Proposed Pull/Splice Box
- Proposed Electrical Circuit
- Existing Street Light
- Existing Utility Pole
- Existing Fire Hydrant
- Existing Tree
- Existing Hedges
- Proposed Elevation
- Current Elevation
- Clear & Grub Invasive Vegetation
- Lift Station
- Proposed New Sidewalk
- Edge of Existing Sidewalk
- Edge of Roadway Pavement
- Property Line
- R/W Boundary Line

Notes:

1. The City may elect to make changes to these plans in accordance with field conditions.
2. All work shall be performed in accordance with the latest version of Florida Department of Transportation Standard Specifications for Road and Bridge Construction.
3. The elevations shown in these plans are not referenced to any standard vertical datum. TBM-1 and TBM-2 are theoretical benchmarks at existing storm manhole covers and are identified in these plans. All elevations are to reference the elevation of TBM-1 and TBM-2.
4. It is the responsibility of the contractor to locate all underground utilities and verify their position prior to beginning construction. The City of Naples assumes no responsibility for any errors or omissions of existing utilities.



No.	Description	Date

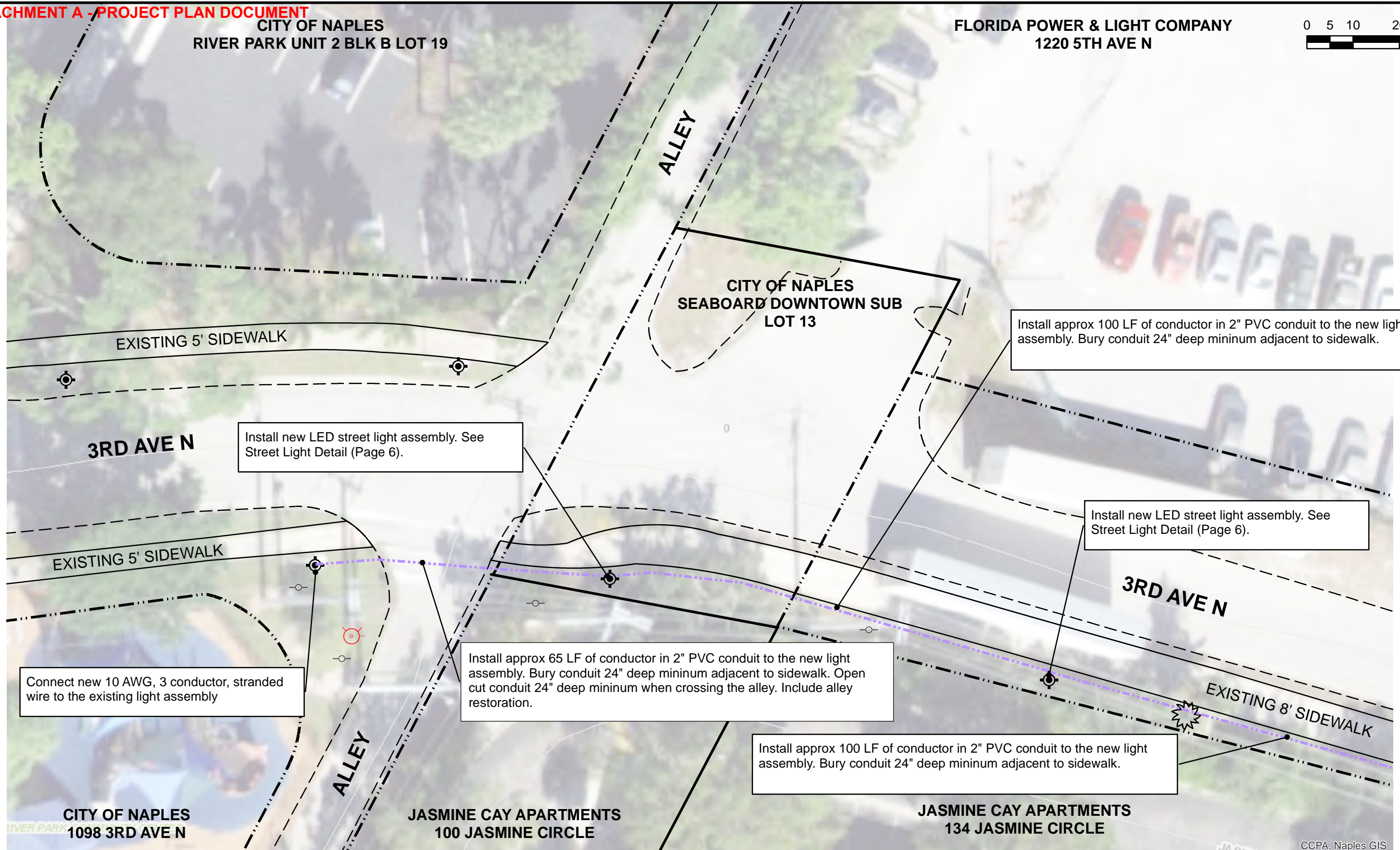


CITY OF NAPLES
STREETS & STORMWATER DEPT.
 295 RIVERSIDE CIRCLE
 NAPLES, FL 34102
 (239) 213-5000

CREATED BY:
 ALEX DIAZ-CLARK
 ENGINEERING AIDE

 DATE:
 04/08/2019

SHEET:	PROJECT LOCATION	PAGE NO.
PROJECT:	RIVER PARK TO 12TH ST SIDEWALK CONNECTION	1



No.	Description	Date

CITY OF NAPLES
STREETS & STORMWATER DEPT.
 295 RIVERSIDE CIRCLE
 NAPLES, FL 34102
 (239) 213-5000

CREATED BY:
ALEX DIAZ-CLARK
ENGINEERING AIDE

DATE:
04/08/2019

SHEET:
PLAN SHEET (1)

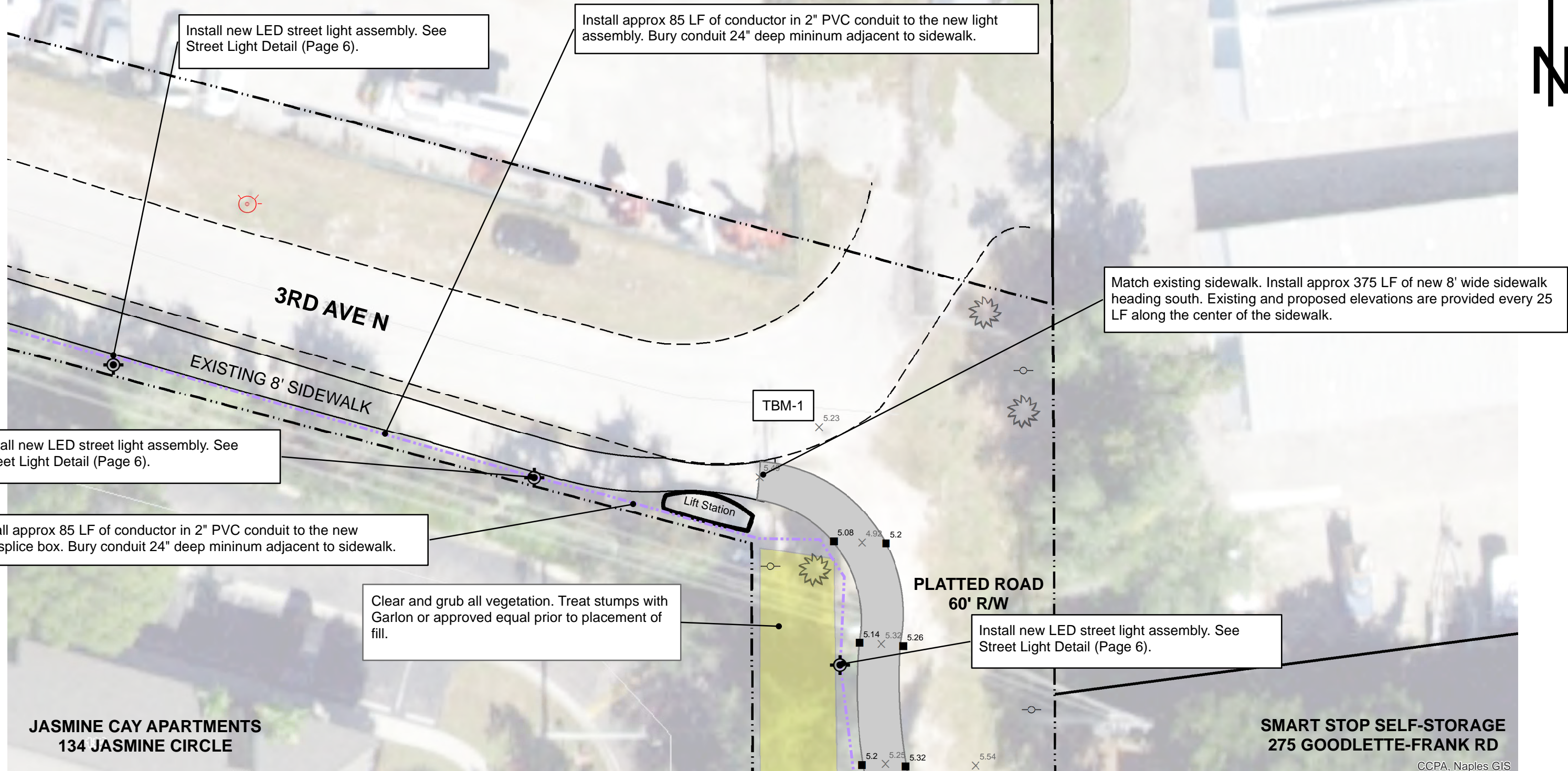
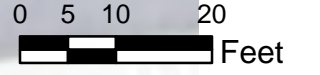
PROJECT:
**RIVER PARK TO 12TH ST
SIDEWALK CONNECTION**

PAGE NO.
2

ATTACHMENT A - PROJECT PLAN DOCUMENT

**FLORIDA POWER & LIGHT COMPANY
1220 5TH AVE N**

**GOODLETTE SELF-STORAGE
400 GOODLETTE-FRANK RD**



Install new LED street light assembly. See Street Light Detail (Page 6).

Install approx 85 LF of conductor in 2" PVC conduit to the new light assembly. Bury conduit 24" deep minimum adjacent to sidewalk.

Match existing sidewalk. Install approx 375 LF of new 8' wide sidewalk heading south. Existing and proposed elevations are provided every 25 LF along the center of the sidewalk.

Install new LED street light assembly. See Street Light Detail (Page 6).

Install approx 85 LF of conductor in 2" PVC conduit to the new pull/splice box. Bury conduit 24" deep minimum adjacent to sidewalk.

Clear and grub all vegetation. Treat stumps with Garlon or approved equal prior to placement of fill.

Install new LED street light assembly. See Street Light Detail (Page 6).

No.	Description	Date



CITY OF NAPLES
STREETS & STORMWATER DEPT.
 295 RIVERSIDE CIRCLE
 NAPLES, FL 34102
 (239) 213-5000

CREATED BY:
ALEX DIAZ-CLARK
ENGINEERING AIDE

DATE:
04/08/2019

SHEET:
PLAN SHEET (2)

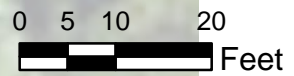
PROJECT:
**RIVER PARK TO 12TH ST
SIDEWALK CONNECTION**

PAGE NO.
3

JASMINE CAY APARTMENTS
134 JASMINE CIRCLE

PLATTED ROAD
60' R/W

SMART STOP SELF-STORAGE
275 GOODLETTE-FRANK RD



Install approx 80 LF of conductor in 2" PVC conduit to the new light assembly. Bury conduit 24" deep minimum adjacent to sidewalk.

Install new LED street light assembly. See Street Light Detail (Page 6).

Install approx 95 LF of conductor in 2" PVC conduit to the new pull/splice box. Bury conduit 24" deep minimum adjacent to sidewalk.

See Typical Cross Section (Page 7 & 8)

Continue installation of approx 375 LF of new 8' wide sidewalk heading south. Existing and proposed elevations are provided every 25 LF along the center of the sidewalk.

Clear and grub all vegetation. Treat stumps with Garlon or approved equal prior to placement of fill.

Install new LED street light assembly. See Street Light Detail (Page 6).

CITY OF NAPLES
118 JASMINE CIRCLE

CCPA, Naples GIS

No.	Description	Date



CITY OF NAPLES
STREETS & STORMWATER DEPT.
295 RIVERSIDE CIRCLE
NAPLES, FL 34102
(239) 213-5000

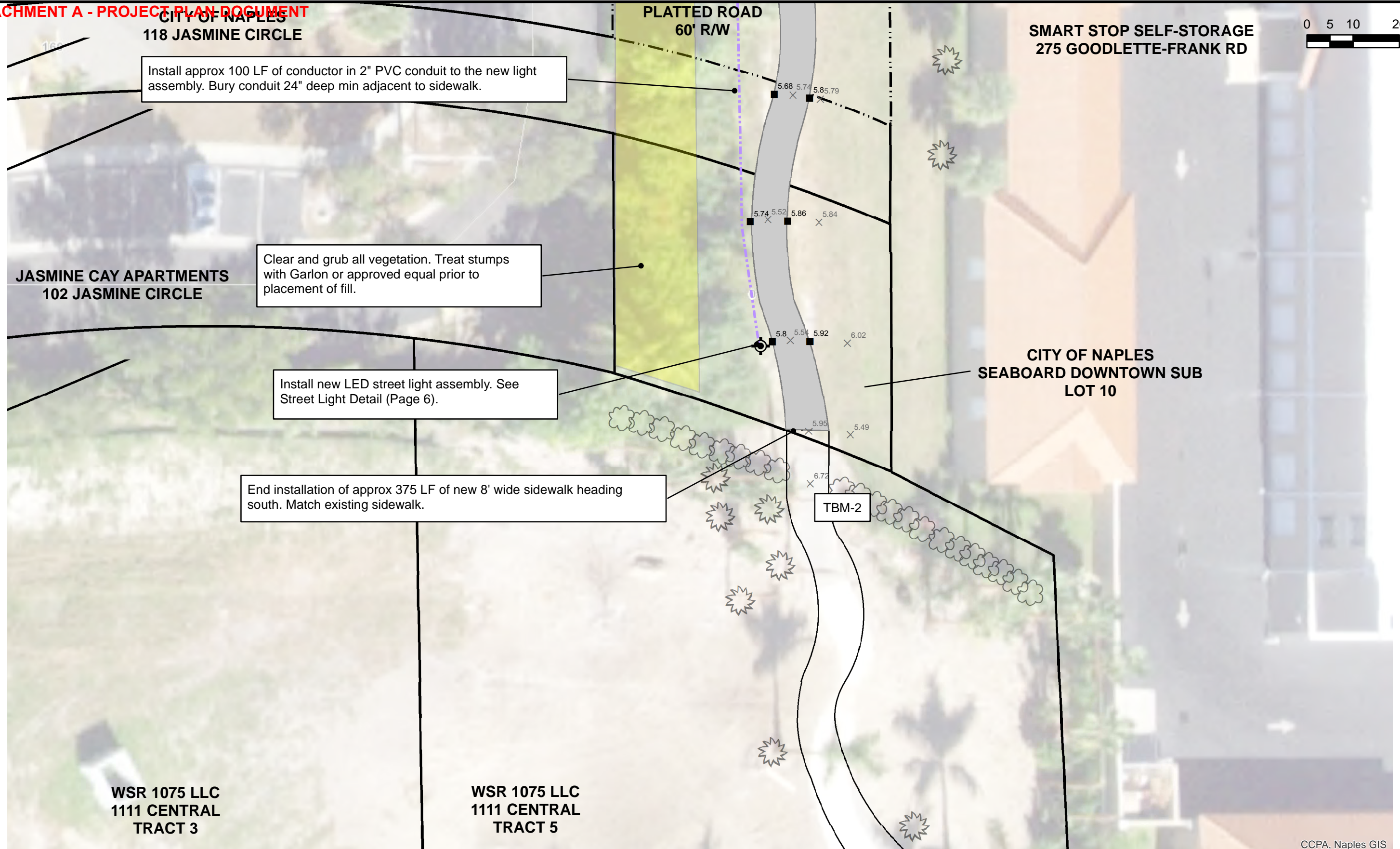
CREATED BY:
ALEX DIAZ-CLARK
ENGINEERING AIDE

DATE:
04/08/2019

SHEET:
PLAN SHEET (3)

PROJECT:
**RIVER PARK TO 12TH ST
SIDEWALK CONNECTION**

PAGE NO.
4



CCPA, Naples GIS

No.	Description	Date



CITY OF NAPLES
STREETS & STORMWATER DEPT.
 295 RIVERSIDE CIRCLE
 NAPLES, FL 34102
 (239) 213-5000

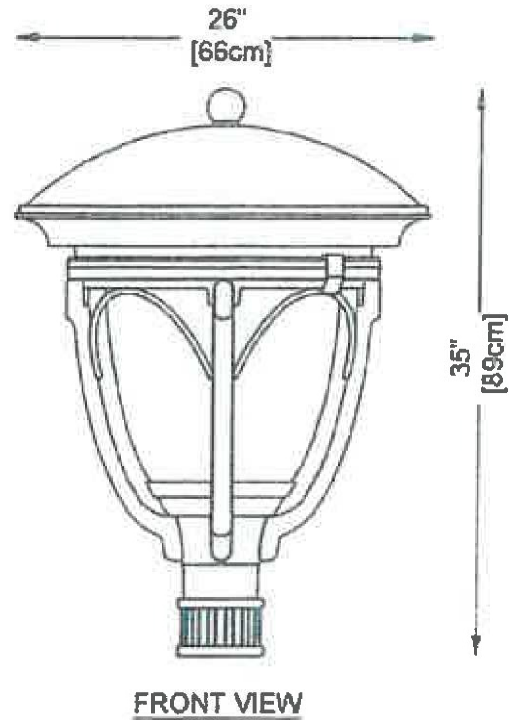
CREATED BY:
 ALEX DIAZ-CLARK
 ENGINEERING AIDE

DATE:
 04/08/2019

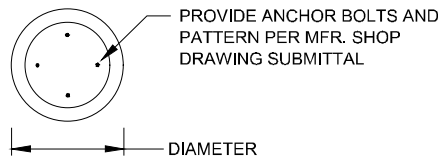
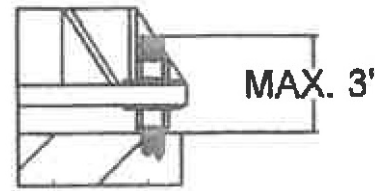
SHEET:	PLAN SHEET (4)	PAGE NO.
PROJECT:	RIVER PARK TO 12TH ST SIDEWALK CONNECTION	5

ATTACHMENT A - PROJECT PLAN DOCUMENT

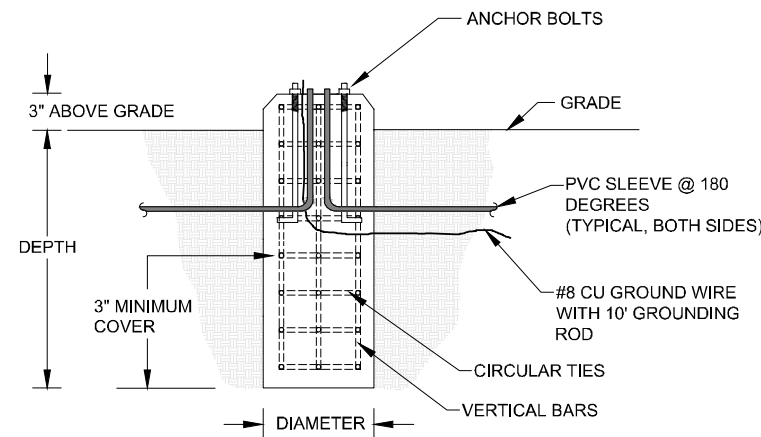
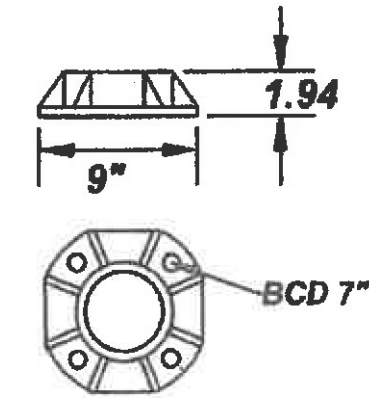
STREET LIGHT ASSEMBLIES TO BE THE FOLLOWING MODEL FROM LUMEC LIGHTING:
 NUMBER: OT10-150MH-SSA3M-ACDR-240-HE-DA-DF10-GN8TX/SPR4D-12-LBC3-GN8TX
 OR APPROVED ALTERNATE. ANY PROPOSED ALTERNATE MUST BE SUBMITTED AND
 APPROVED BY THE CITY DURING THE BIDDING PROCESS.



ANCHOR BOLT PROJECTION



AB-4 CAST BASE

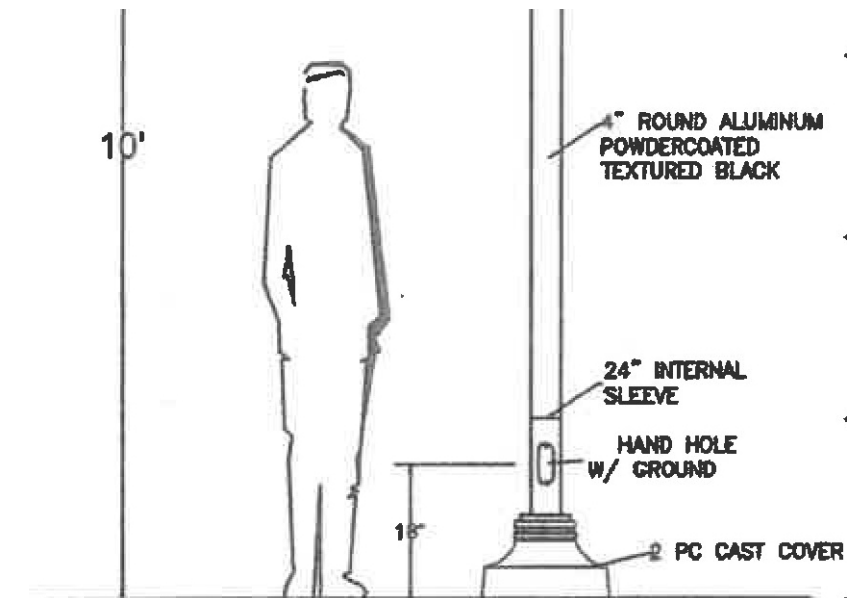


NOTES:

1. CONCRETE FOUNDATION MAY BE PRECAST OR POURED IN PLACE, SUPPLIER SHALL CERTIFY THAT FOUNDATION MEETS 180 M.P.H. WIND WITH A 3-SECOND GUST AND SHALL PROVIDE SIGNED & SEALED CALCULATIONS BY A REGISTERED FLORIDA ENGINEER.
2. DIAMETER AND DEPTH INFORMATION TO BE PROVIDED BY SUPPLIER.

POLE FOUNDATION DETAIL

SCALE: NONE



No.	Description	Date

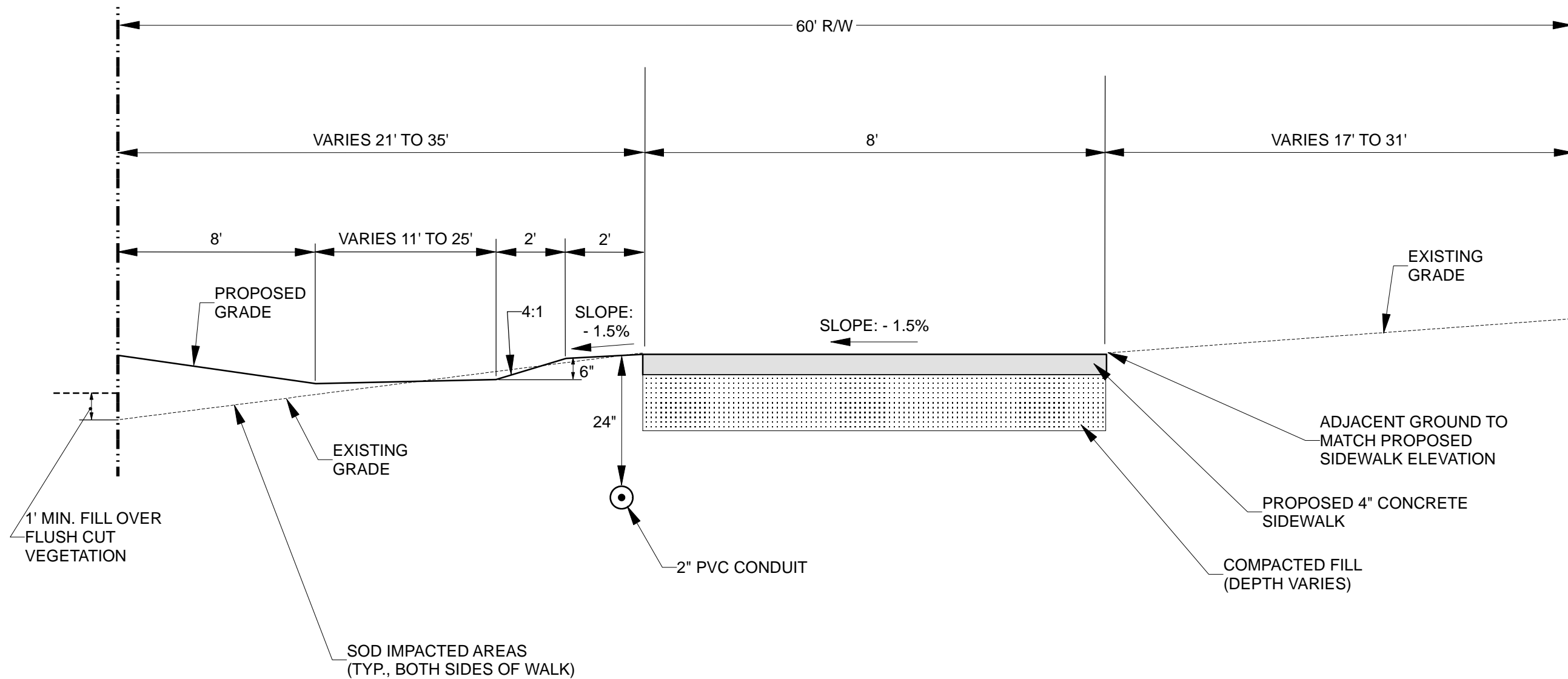


CITY OF NAPLES
STREETS & STORMWATER DEPT.
 295 RIVERSIDE CIRCLE
 NAPLES, FL 34102
 (239) 213-5000

CREATED BY:
 ALEX DIAZ-CLARK
 ENGINEERING AIDE

DATE:
 04/08/2019

SHEET:	STREET LIGHT DETAIL	PAGE NO.
PROJECT:	RIVER PARK TO 12TH ST SIDEWALK CONNECTION	6



TYPICAL CONCRETE SIDEWALK CROSS SECTION (LOOKING NORTH)

NOT DRAWN TO SCALE

No.	Description	Date

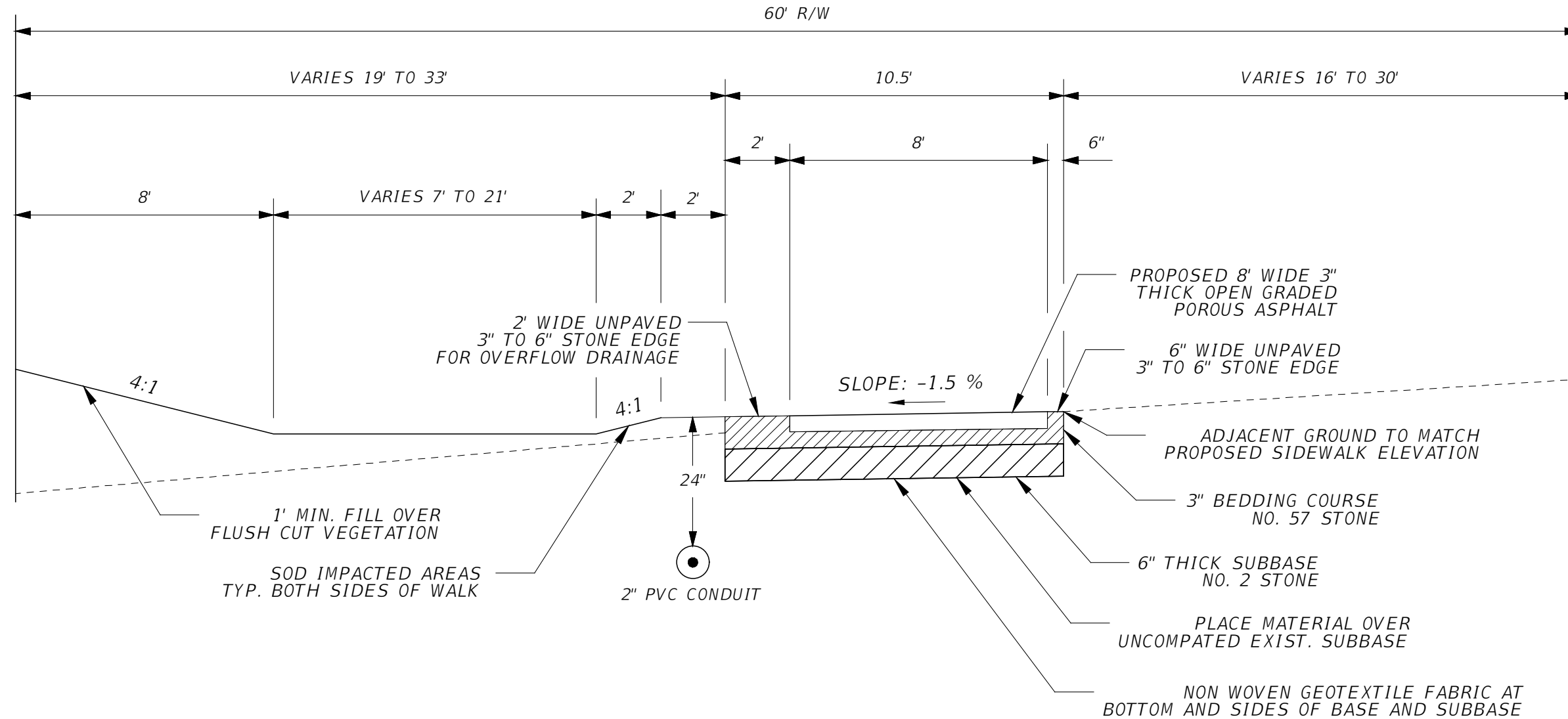


CITY OF NAPLES
STREETS & STORMWATER DEPT.
 295 RIVERSIDE CIRCLE
 NAPLES, FL 34102
 (239) 213-5000

CREATED BY:
 ALEX DIAZ-CLARK
 ENGINEERING AIDE

DATE:
 04/08/2019

SHEET:	TYPICAL CROSS SECTION	PAGE NO.
PROJECT:	RIVER PARK TO 12TH ST SIDEWALK CONNECTION	7



TYPICAL PERVIOUS ASPHALT SIDEWALK CROSS SECTION
(LOOKING NORTH)

No.	Description	Date



CITY OF NAPLES
STREETS & STORMWATER DEPT.
 295 RIVERSIDE CIRCLE
 NAPLES, FL 34102
 (239) 213-5000

CREATED BY:
 ALEX DIAZ-CLARK
 ENGINEERING AIDE

 DATE:
 04/08/2019

SHEET:	TYPICAL SECTIONS	PAGE NO.
PROJECT:	RIVER PARK TO 12TH ST SIDEWALK CONNECTION	8