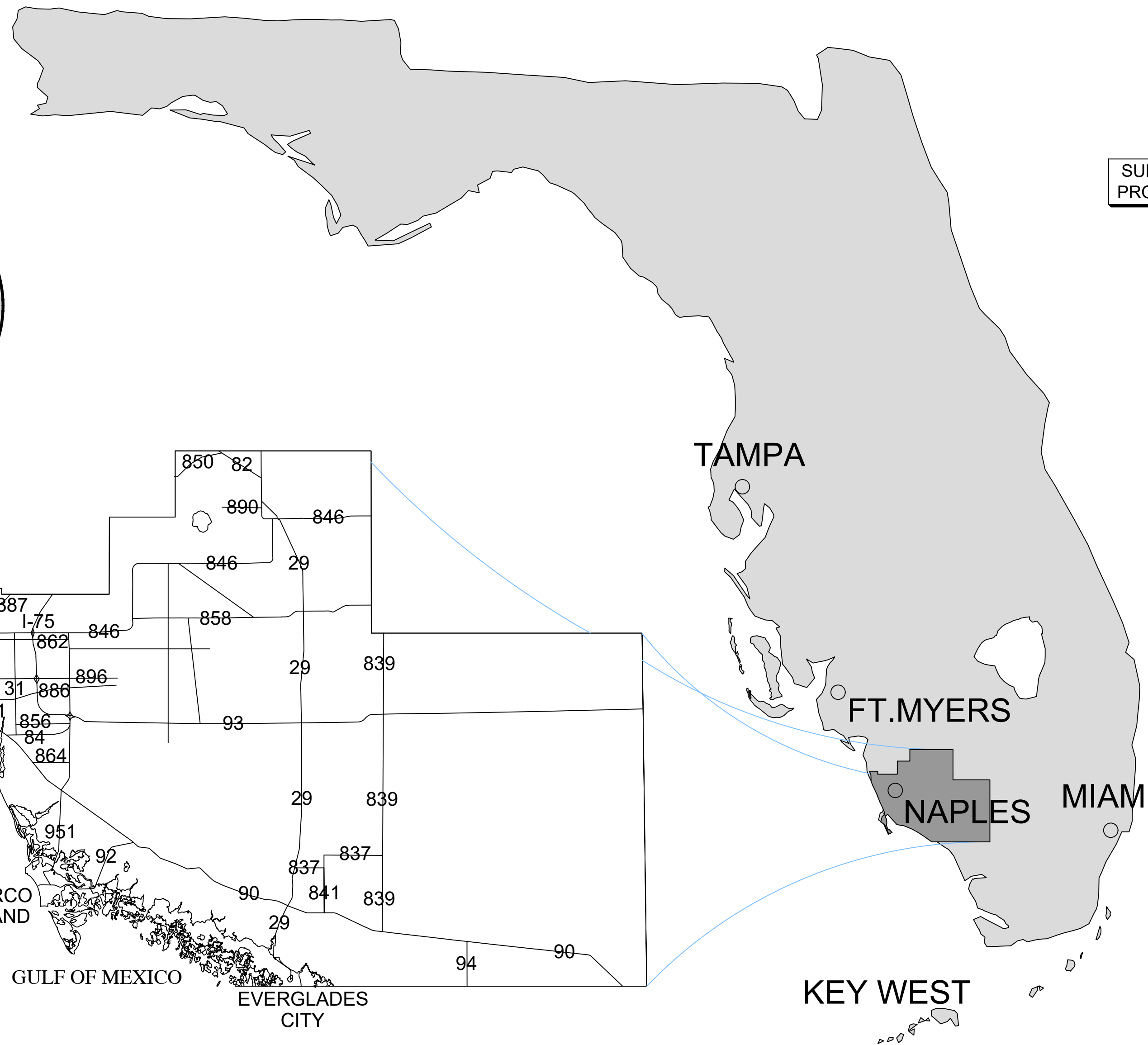
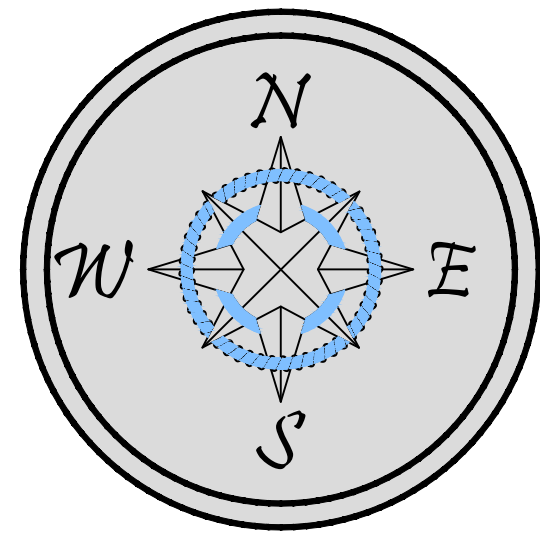
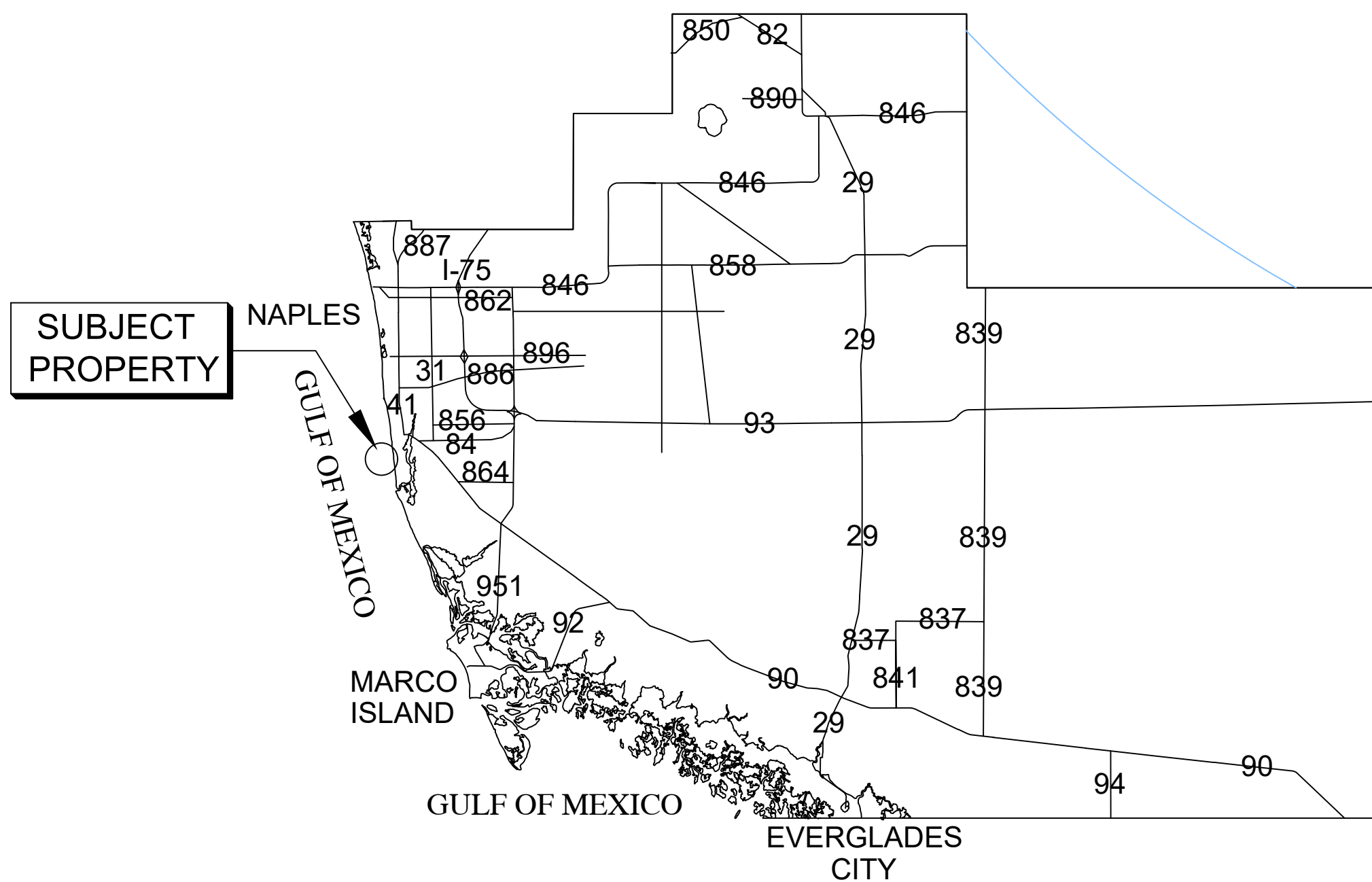


STATE OF FLORIDA



COLLIER COUNTY



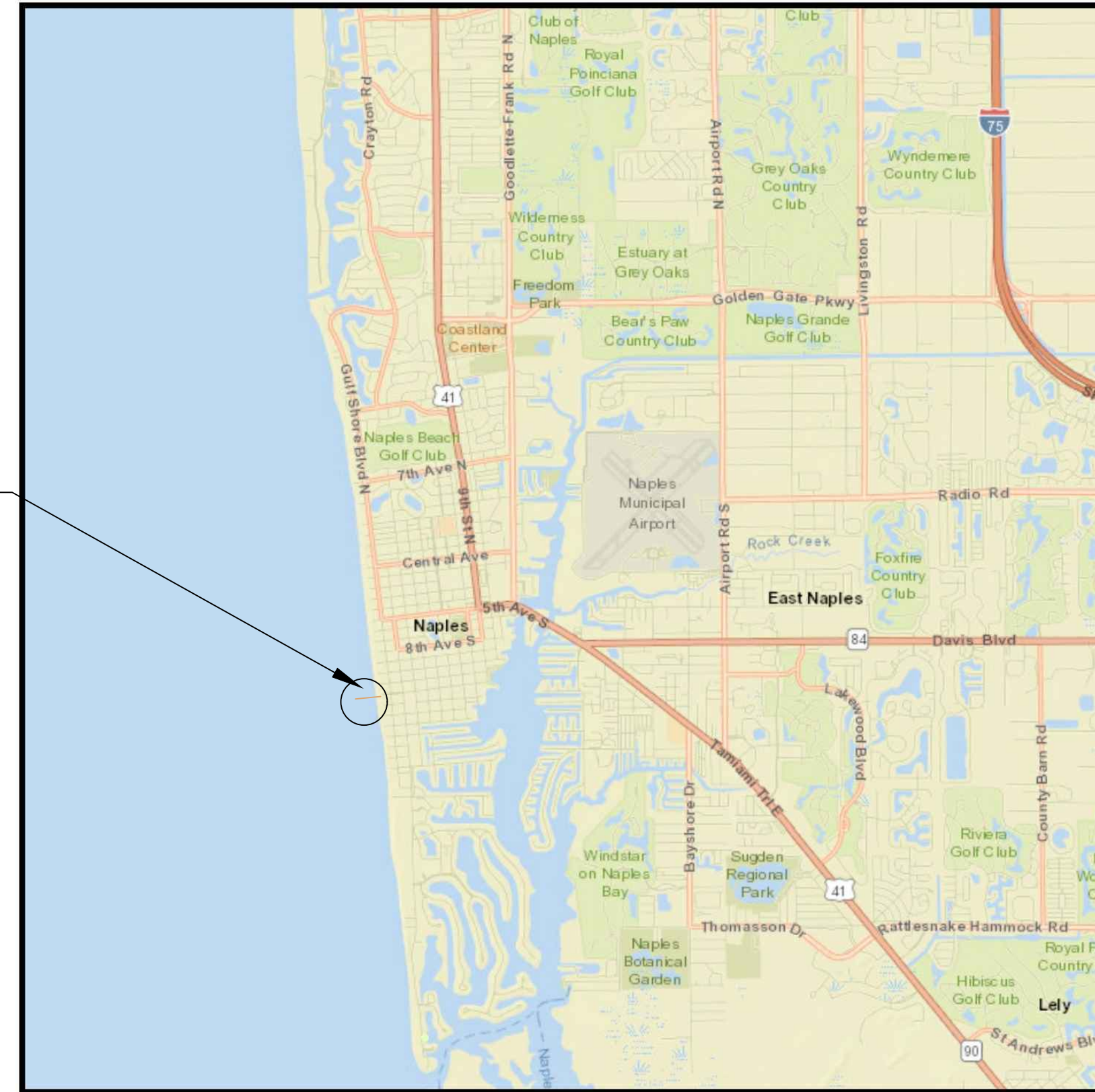
<> LATITUDE: N 26.131543°
 <> LONGITUDE: W 81.807529°

SITE OWNER & ADDRESS:
 <> CITY OF NAPLES
 25 12TH AVE S
 NAPLES, FL 34102

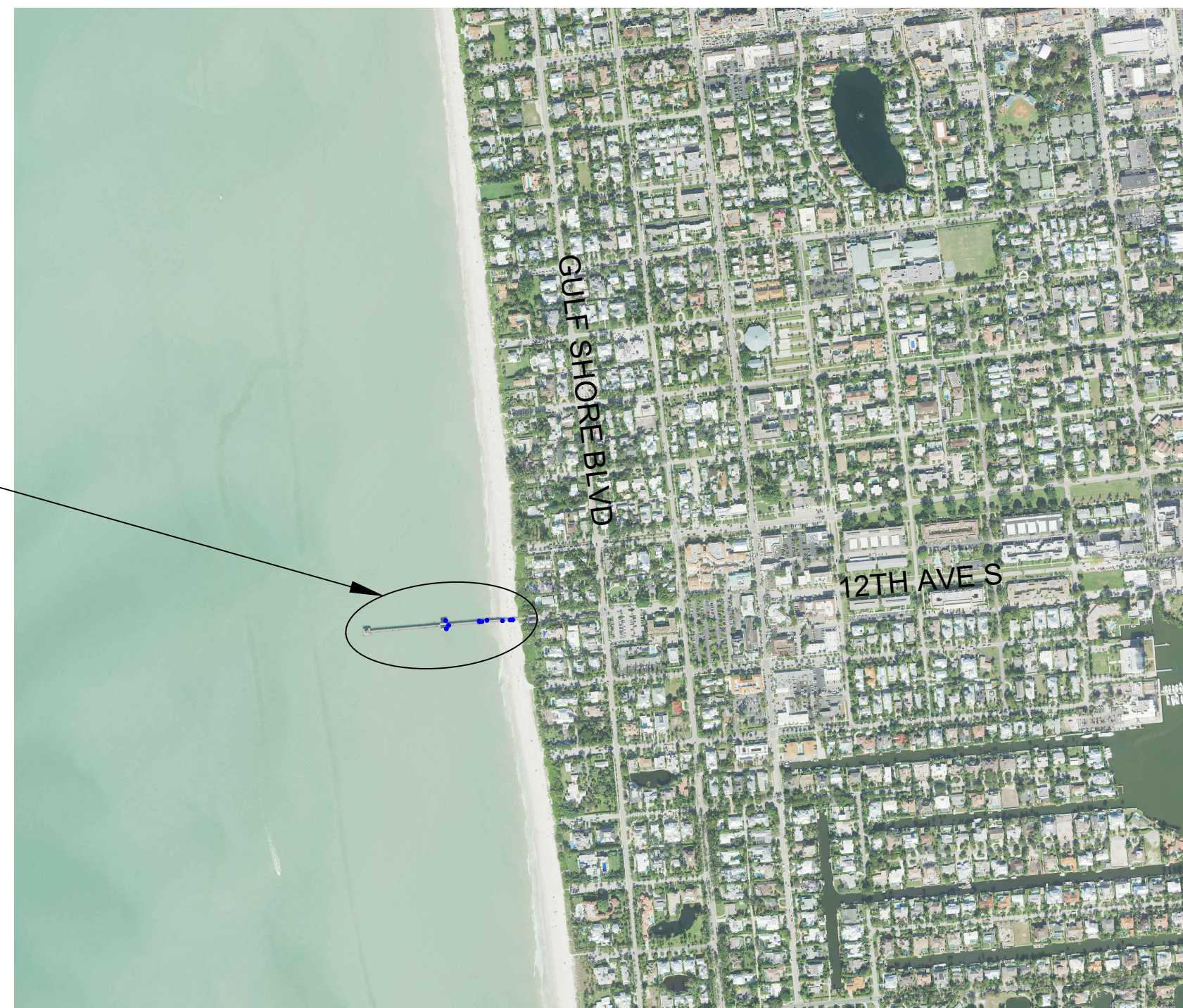
NAPLES PIER CONSTRUCTION

SHEET NO.	SHEET TITLE
G100	LOCATION PAGE
G101	GENERAL NOTES
G102	SCHEDULE TABLES
C100	OVERALL SITE
C101	PILES - BENTS 1-7
C102	PILES - BENTS 7-21
C103	PILES - BENTS 21-35
C104	PILES - BENTS 35-42
C105	PILES - BENTS 42-56
C106	PILES - BENTS 56-62
C107	PILES - BENTS 62-69
C200	DETAIL PAGE
C201	PILE JACKET DETAILS

SUBJECT PROPERTY



VICINITY MAP



CONSTRUCTION SET

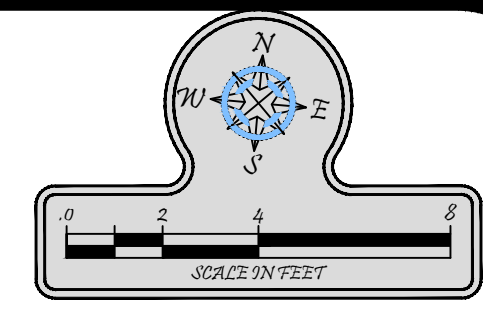
NAPLES PIER LOCATION PAGE

TURRELL, HALL & ASSOCIATES, INC.
 Marine & Environmental Consulting
 3584 Exchange Ave. Suite B,
 Naples, FL 34104-3732
 Phone: (239) 643-0166
 Fax: (239) 643-6632
 email: thall@turrellhallassociates.com

REVISION NO.	DATE	CHANGED BY

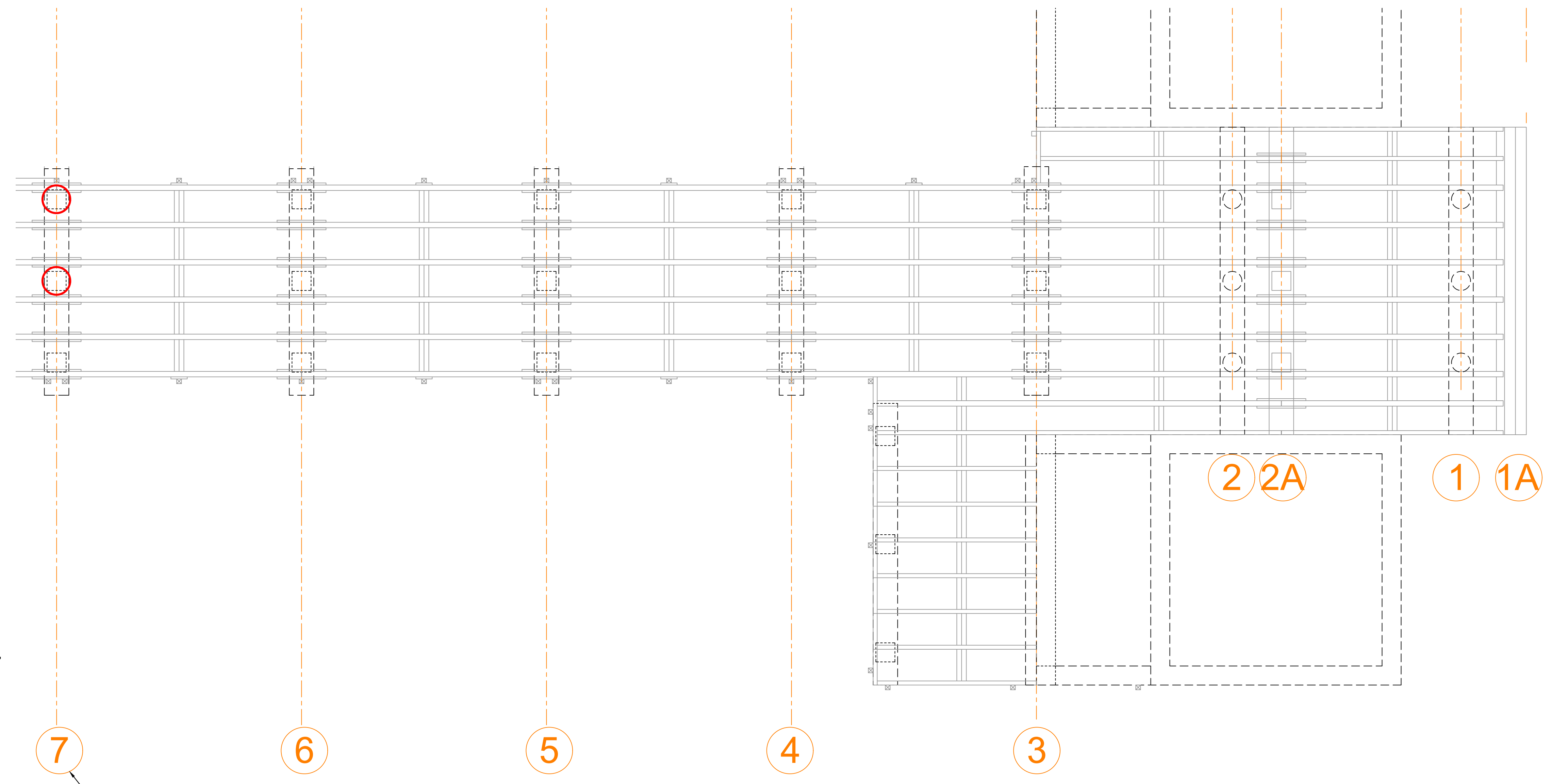
DRAWN BY: RMJ	REVIEWED BY: TTT	PROJECT: 1550.2	SHEET: G100
DATE: 03-02-20	SCALE: N/A	LAYOUT: LOCATION	

JOSHUA W. MAXWELL
 REGISTERED PROFESSIONAL ENGINEER
 CERTIFICATE OF AUTHORIZATION NO. 9875
 LICENSE NO. 91241
 DATE: March 3, 2020 10:51 AM



PILE #

1
2
3
4
5
6
7



BENT # TYP

PILE WITH DEFECT

CONSTRUCTION SET

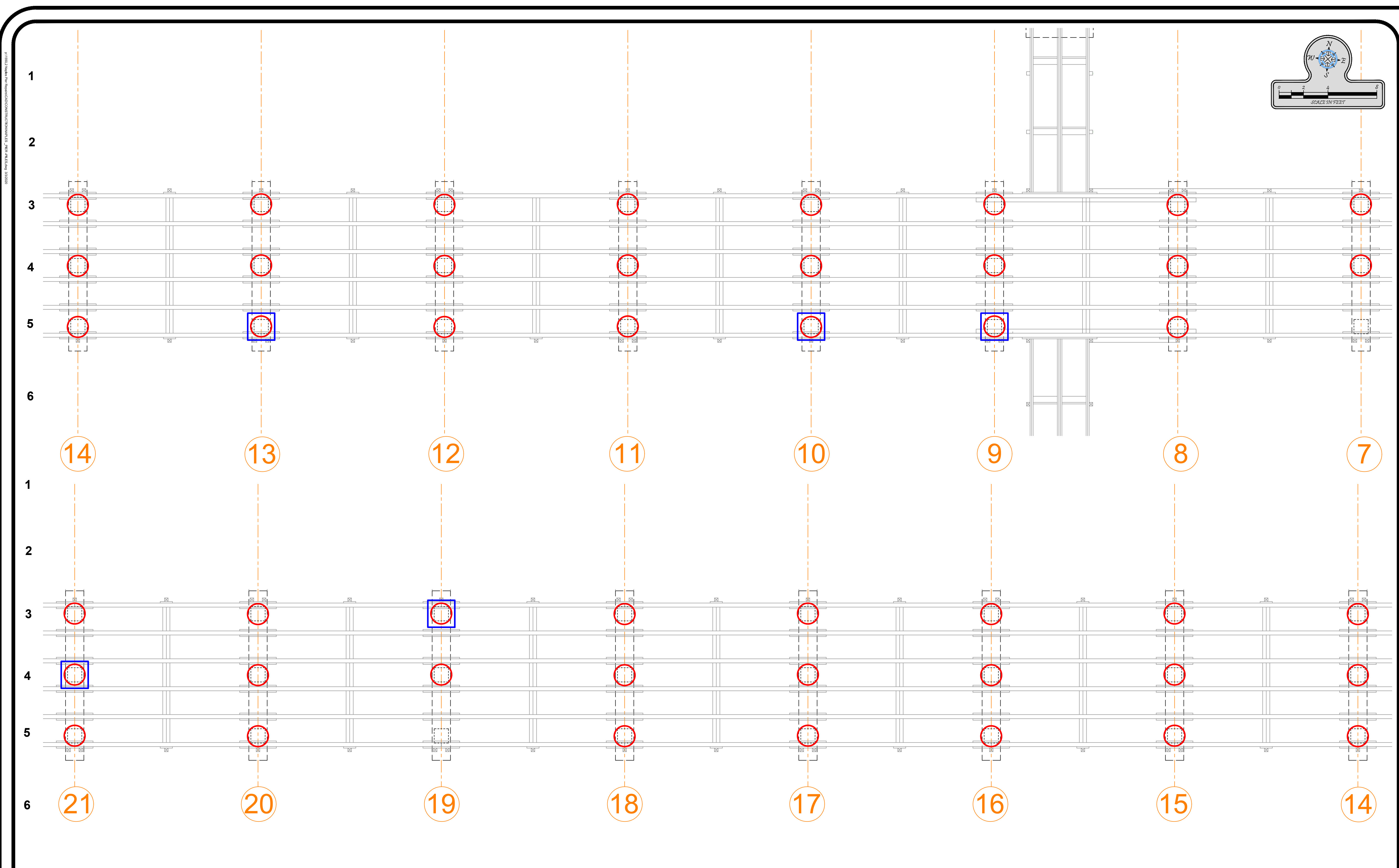
NAPLES PIER PILES - BENTS 1-7


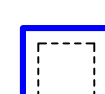
TURRELL, HALL & ASSOCIATES, INC.
 Marine & Environmental Consulting
 3584 Exchange Ave, Suite B,
 Naples, FL 34104-3732
 Phone: (239) 643-0166
 Fax: (239) 643-6632
 email: tunad@turrell-associates.com

REVISED BY	DATE	CHANGED

DRAWN BY: RMJ	REVIEWED BY: JTT
PROJECT: 1550.2	SHEET: C101
DATE: 03-02-20	SCALE: N/A
LAYOUT: BENTS 1-7	


JOSHUA W. MAXWELL
 REGISTERED PROFESSIONAL ENGINEER
 CERTIFICATE OF AUTHORIZATION NO. 5875
 LICENSE NO. 81247
 DATE: March 3, 2020 10:16 AM



 PILE WITH DEFECT
 GALVANIZED JACKET

CONSTRUCTION SET

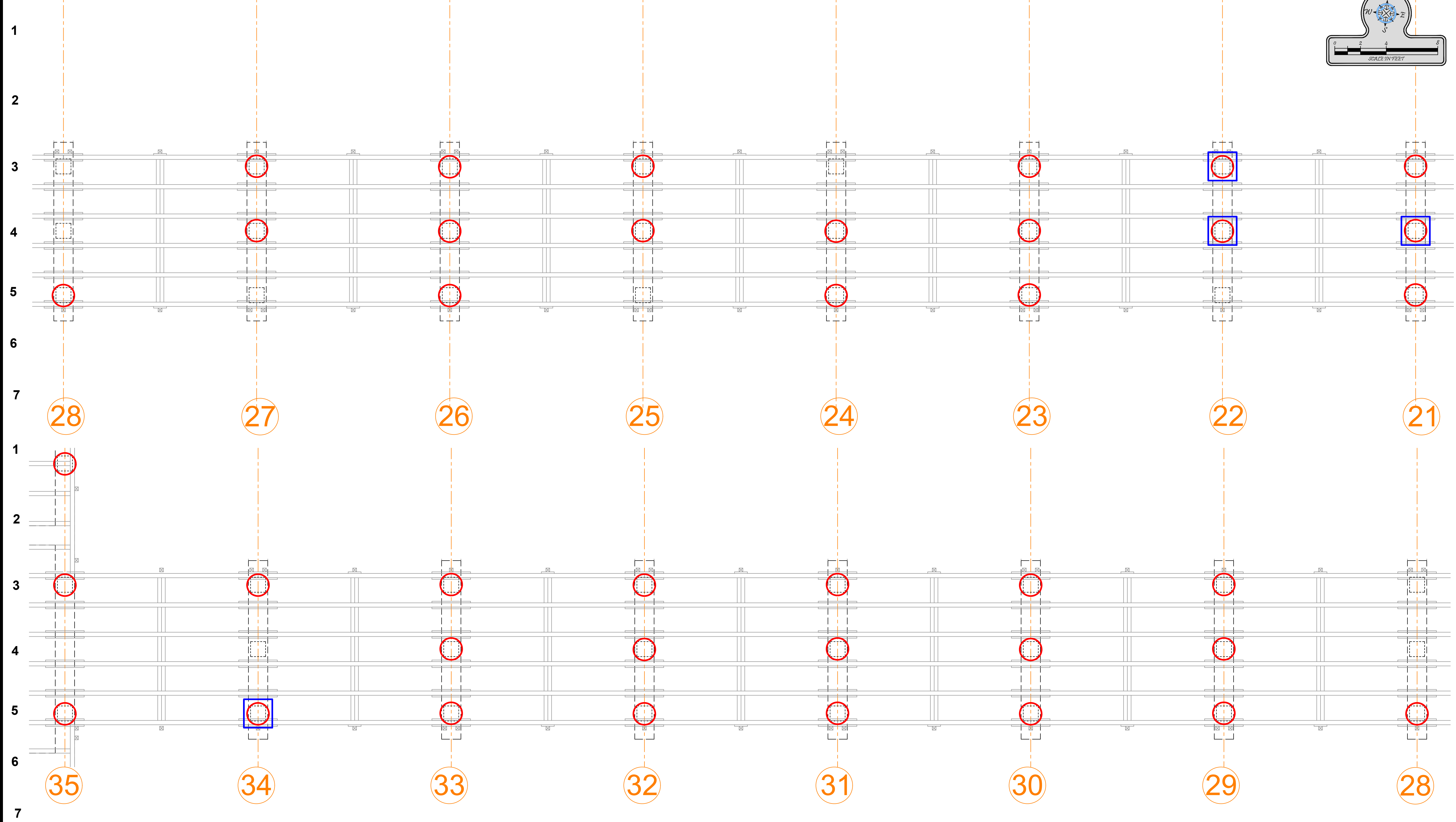
NAPLES PIER PILES - BENTS 7-21


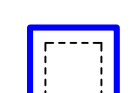

TURRELL, HALL & ASSOCIATES, INC.
 Marine & Environmental Consulting
 3554 Exchange Ave., Suite B
 Naples, FL 34104-3732
 Phone: (239) 643-0166
 Fax: (239) 643-6632
 email: tuns@turrell-associates.com

REVISED BY	DATE	CHANGED

DRAWN BY: RMJ PROJECT: 1-550.2 DATE: 03-02-20 SCALE: N/A LAYOUT: BENTS 7-21	REVIEWED BY: THT SHEET: C102
--	---

JOSHUA W. MAXWELL
 REGISTERED PROFESSIONAL ENGINEER
 CERTIFICATE OF AUTHORIZATION NO. 5875
 LICENSE NO. 8104
 DATE: March 3, 2020 10:16 AM



-  PILE WITH DEFECT
-  GALVANIZED JACKET

CONSTRUCTION SET

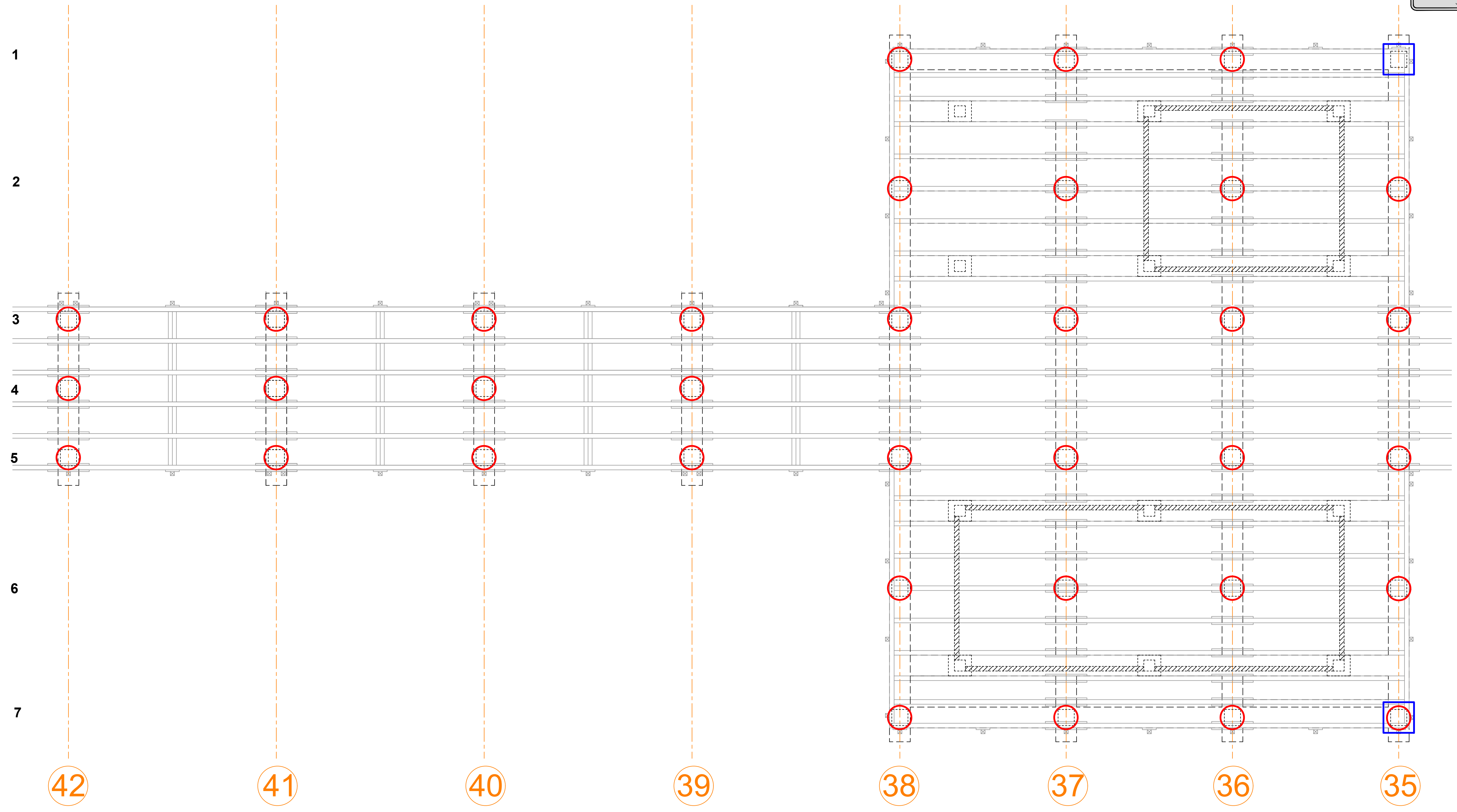
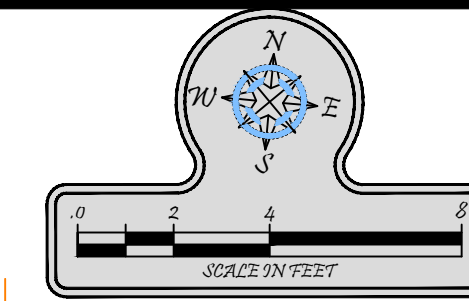
NAPLES PIER PILES - BENTS 21- 35


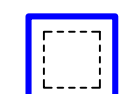
TURRELL, HALL & ASSOCIATES, INC.
 Marine & Environmental Consulting
 3584 Exchange Ave. Suite B,
 Naples, FL 34104-3732
 Phone: (239) 644-4036
 Fax: (239) 644-4035
 email: taha@turrell-associates.com

REVISION BY	DATE	CHANGED

DRAWN BY: RMJ PROJECT: 1550.2 DATE: 03-02-20 SCALE: N/A LAYOUT: BENTS 21- 35	REVIEWED BY: THT SHEET: C103
---	---

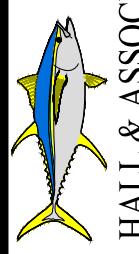
JOSHUA W. MAXWELL
 REGISTERED PROFESSIONAL ENGINEER
 CERTIFICATE OF AUTHORIZATION NO. 5875
 LICENSE NO. 91247
 DATE: MARCH 3, 2008 10:16 AM



 PILE WITH DEFECT
 GALVANIZED JACKET

CONSTRUCTION SET

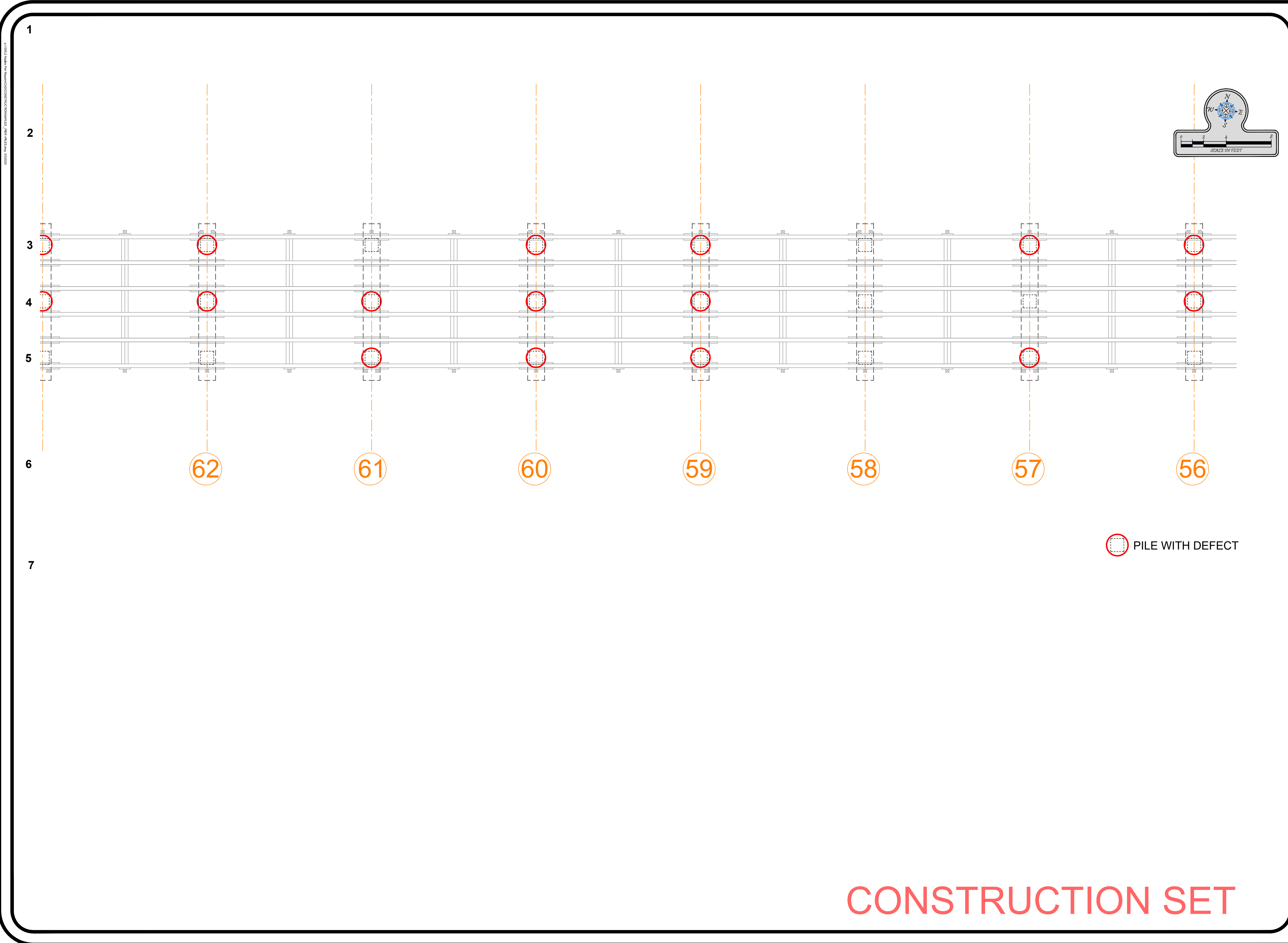
NAPLES PIER PILES - BENTS 35-42


TURRELL HALL & ASSOCIATES, INC.
 Marine & Environmental Consulting
 3000 Bay Forest Drive, Suite 200
 Naples, FL 34104-3732
 Phone: (239) 643-0166
 Fax: (239) 643-6632
 email: thall@turrell-associates.com

REVISION BY	DATE	CHANGED

DESIGNED BY: RMJ	DRAWN BY: TTT
PROJECT: 1550.2	SHEET: C104
DATE: 03-02-20	SCALE: N/A
PROJECT: BENTS 35-42	

JOSHUA W. MAXWELL
 REGISTERED PROFESSIONAL ENGINEER
 CERTIFICATE OF AUTHORIZATION NO. 9875
 LICENSE NO. 91247
 DATE: MAR 3, 2020 10:17 AM



CONSTRUCTION SET

NAPLES PIER

PILES - BENTS 56-62

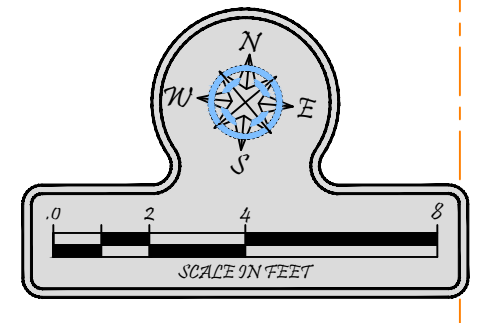
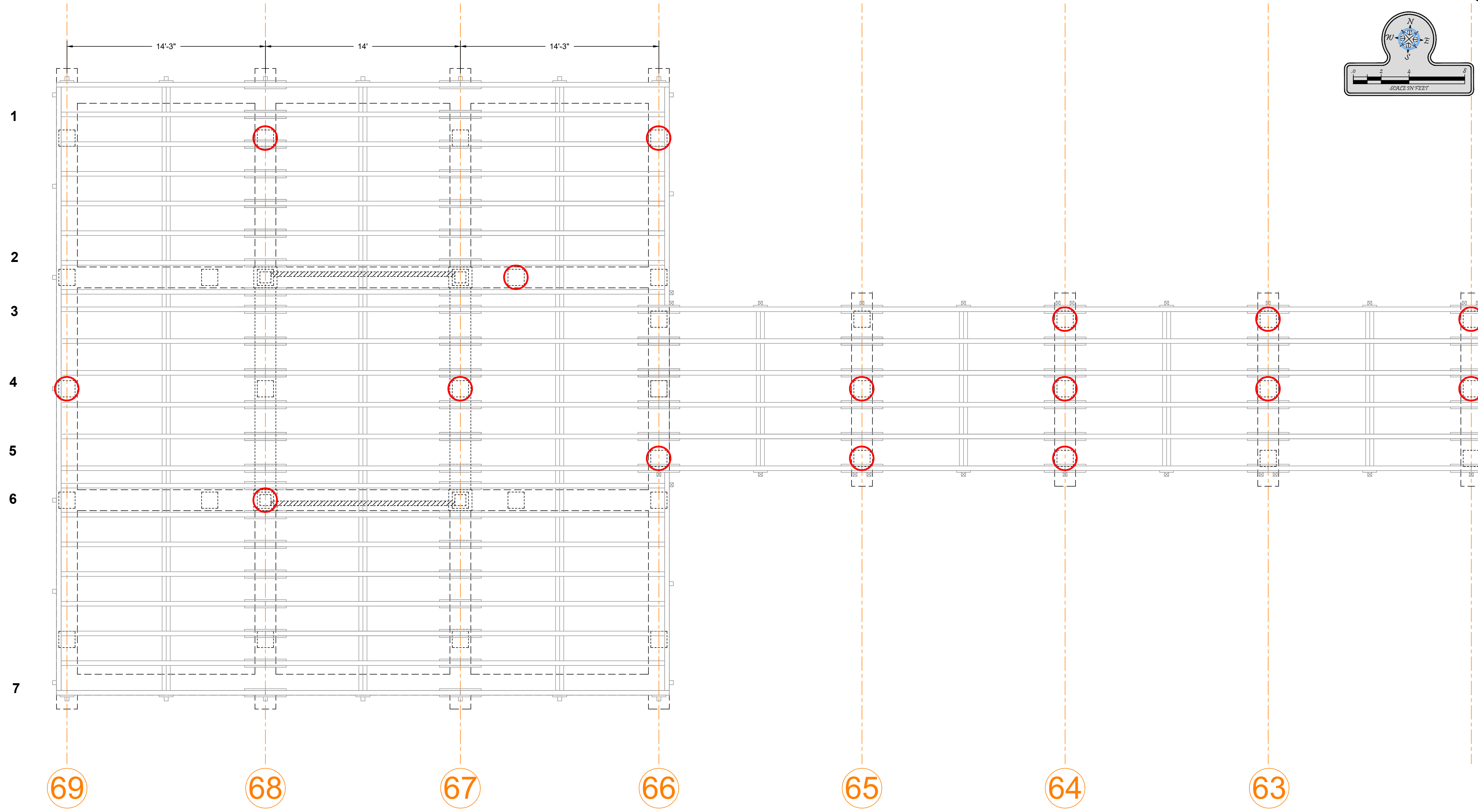
TURRELL, HALL & ASSOCIATES, INC.
 Marine & Environmental Consulting
 3584 Exchange Ave., Suite B,
 Naples, FL 34102
 Phone: (239) 643-0166
 Fax: (239) 643-6632
 email: tun@turrell-associates.com

REVISED BY	DATE	CHANGED

DRAWN BY: RMJ PROJECT: 1550.2 DATE: 03-02-20 SCALE: N/A LAYOUT: BENTS 56-62	REVIEWED BY: JTT SHEET: C106
--	---

JOSHUA W. MAXWELL
 REGISTERED PROFESSIONAL ENGINEER
 CERTIFICATE OF AUTHORIZATION NO. 5875
 LICENSE NO. 81247
 DATE: March 3, 2020 10:17 AM

©2016 TURRELL, HALL & ASSOCIATES, INC. ALL RIGHTS RESERVED. THIS DOCUMENT IS THE PROPERTY OF TURRELL, HALL & ASSOCIATES, INC. AND IS NOT TO BE REPRODUCED OR TRANSMITTED IN ANY FORM OR BY ANY MEANS, ELECTRONIC OR MECHANICAL, WITHOUT PERMISSION IN WRITING FROM TURRELL, HALL & ASSOCIATES, INC.



NAPLES PIER PILES - BENTS 62-69

TURRELL, HALL & ASSOCIATES, INC.
 Marine & Environmental Consulting
 3584 Exchange Ave. Suite B,
 Naples, FL 34109
 Phone: (239) 643-0166
 Fax: (239) 643-6632
 Email: tuma@turrell-associates.com

REVISED BY:	DATE:	CHANGED:

DRAWN BY: RMJ	REVIEWED BY: THT
PROJECT: 1550.2	SHEET: C107
DATE: 03-02-20	SCALE: N/A
PROJECT: BENTS 62-69	

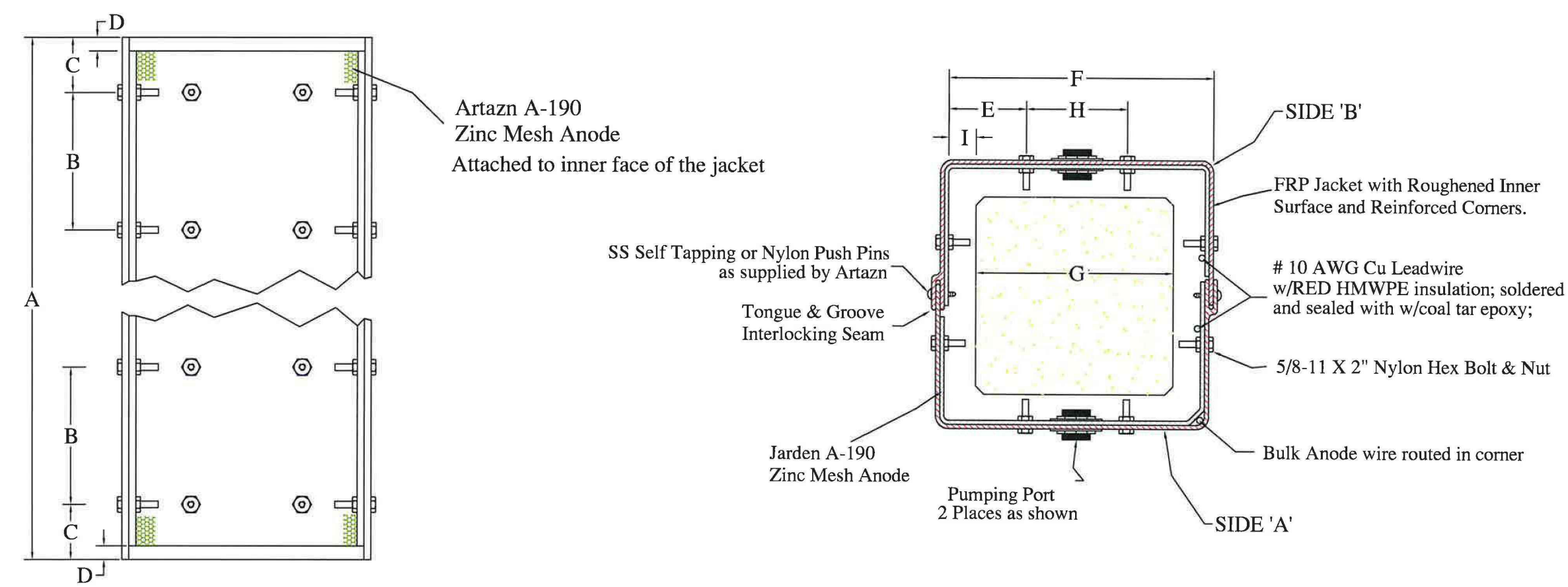
PILE WITH DEFECT

CONSTRUCTION SET

JOSHUA W. MAXWELL
 REGISTERED PROFESSIONAL ENGINEER
 CERTIFICATE OF AUTHORIZATION NO. 5875
 LICENSE NO. 61247
 DATE: March 3, 2020 10:17 AM

LIFEJACKET® ASSEMBLY

DIMENSIONS (INCHES)													QTY
A	B	C	D	E	F	G	H	I	J*	PP SIZE	PP ELEV		
TBD*(X)	X	X	2	6	18	14	6	2	1/8	2	TBD	TBI	



- NOTES**
- 1) Each jacket section consists of an A side and B side.
 - 2) Assemble jackets so that lead wires are on the same side of the pile.
 - 3) Pumping ports alternate on opposite sides and all have non-metallic external hardware. See Dimensions Table for size and elevations.
 - 4) Bottom pumping port at 6" to allow clearance of bottom form and seal.

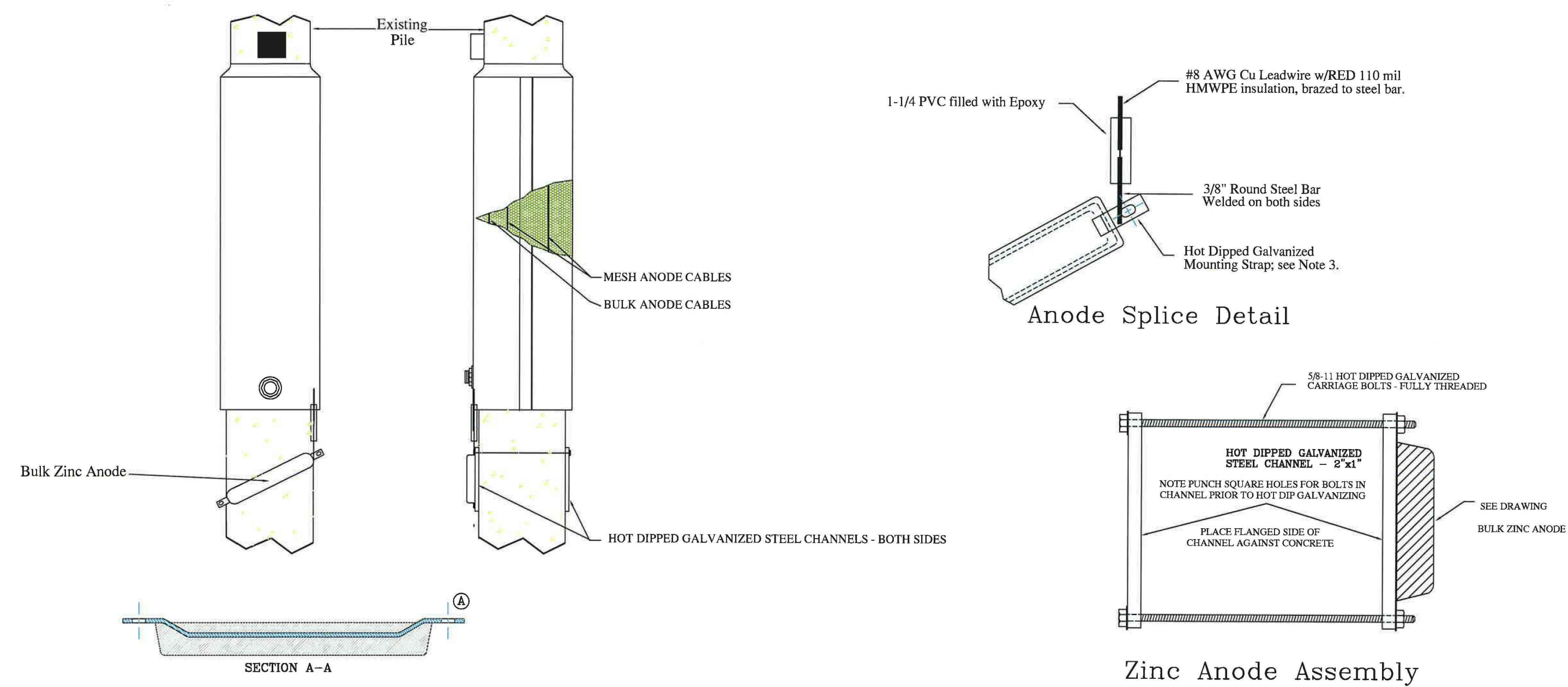
DRAWN FOR ILLUSTRATION PURPOSES ONLY NOT TO SCALE

THIS PRINT IS OUR PROPERTY AND LOANED SUBJECT TO RETURN UPON DEMAND ALL RIGHTS OF DESIGN AND INVENTION ARE RESERVED

REV.	DATE	DESCRIPTION	BY	CHK'D	APP'D	DATE	DESCRIPTION	BY	CHK'D	APP'D	DATE	DESCRIPTION

REVISED	TITLE	LIFEJACKET ASSEMBLY	Artazn™
DRAWN	DATE	FULL SECTION VIEW	02/28/20
SCALE	PROJECT NO.	Naples Boat House	THA-1550.1
DWG. NO.	XXXXXX		

LIFEJACKET® BULK ANODE ASSEMBLY



DRAWN FOR ILLUSTRATION PURPOSES ONLY NOT TO SCALE

THIS PRINT IS OUR PROPERTY AND LOANED SUBJECT TO RETURN UPON DEMAND ALL RIGHTS OF DESIGN AND INVENTION ARE RESERVED

REV.	DATE	DESCRIPTION	BY	CHK'D	APP'D	DATE	DESCRIPTION	BY	CHK'D	APP'D	DATE	DESCRIPTION

REVISED	TITLE	BULK ANODE ASSEMBLY	Artazn™
DRAWN	DATE	FULL SECTION VIEW	02/28/20
SCALE	PROJECT NO.	Naples Boat House	THA-1550.1
DWG. NO.	XXXXXXX		

CONSTRUCTION SET

NAPLES PIER PILE JACKET DETAILS

TURRELL, HALL & ASSOCIATES, INC.
 Marine & Environmental Consulting
 3584 Exchange Ave, Suite B,
 Naples, FL 34104-3732
 Phone: (239) 643-0166
 Fax: (239) 643-0652
 email: thall@turrell-hall.com

REVISED	DATE	DESCRIPTION

REVIEWED BY:	RMJ
PROJECT:	1550.2
DATE:	03-03-20
SCALE:	N/A
LAYOUT:	PILE JACKET SET
SHEET:	C201

JOSHUA W. MAXWELL
 REGISTERED PROFESSIONAL ENGINEER
 CERTIFICATE OF AUTHORIZATION NO. 5875
 LICENSE NO. 9147
 DATE: March 3, 2020 10:17 AM