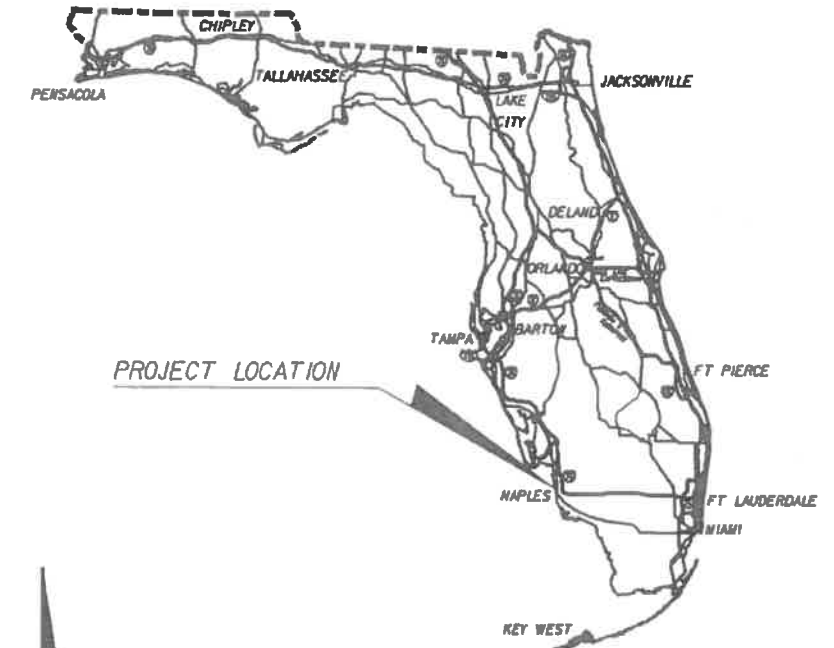


# Attachment B

COMPONENTS OF CONTRACT PLANS SET  
STRUCTURE PLANS

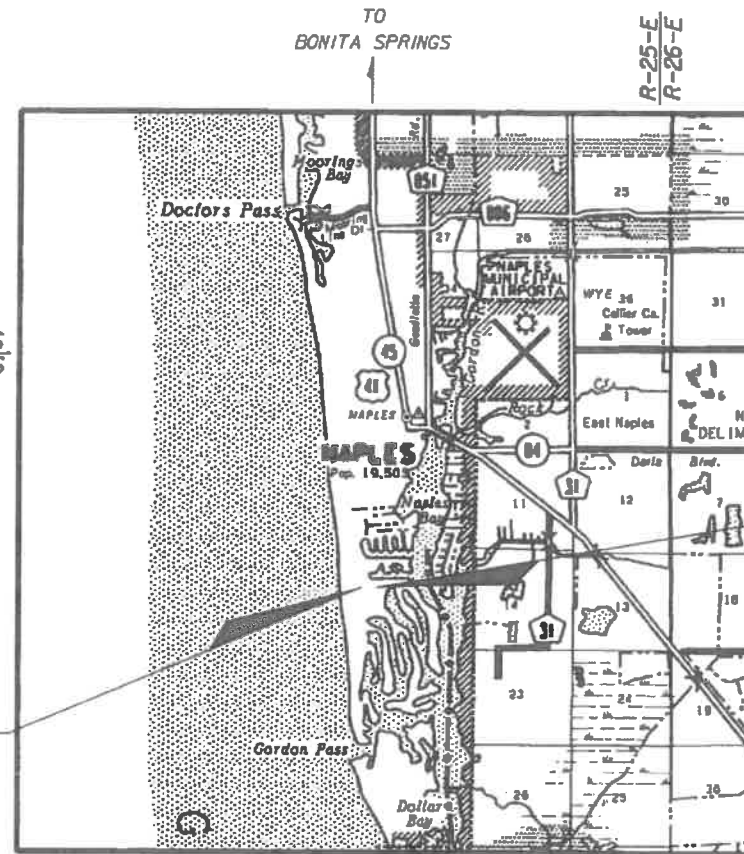
## CITY OF NAPLES CONTRACT PLANS

### GALLEON DRIVE OVER LANTERN LAKE BRIDGE REPLACEMENT



#### INDEX OF STRUCTURE PLANS

SHEET NO.	SHEET DESCRIPTION
B-1	KEY SHEET
B-2	GENERAL NOTES
B-3	TABULATION OF QUANTITIES
B-4	PRECAST CONCRETE SHEET PILES (INDEX NO. S-400)
B-5	PRECAST CONCRETE SHEET PILES TYPE "A" - 10" THICK (INDEX NO. 410)
B-6	NOTES & DETAILS FOR SQUARE PRESTRESSED CONCRETE PILES (INDEX NO. 600)
B-7	SQUARE PRESTRESSED CONCRETE PILE SPLICES (INDEX NO. 601)
B-8	14" SQUARE PRESTRESSED CONCRETE PILES (INDEX NO. 614)
B-9	STANDARD BAR BENDING DETAILS (INDEX NO. 1300)
B-10	BRIDGE RAIL
B-11	PLAN AND ELEVATION
B-12	REMOVAL OF EXISTING STRUCTURES
B-13	TRAFFIC CONTROL PLAN
B-14	FOUNDATION INVESTIGATION (BORINGS)
B-15	FOUNDATION LAYOUT
B-16	END BENT 1
B-17	END BENT 4
B-18	END BENT DETAILS
B-19	INTERMEDIATE BENTS
B-20	FINISH GRADE ELEVATIONS
B-21	SUPERSTRUCTURE
B-22	TYPICAL SECTION
B-23	REINFORCING BAR LIST
B-24	APPROACH SLAB - FLEXIBLE PAVEMENT APPROACHES



ALL SHOP DRAWINGS  
TO BE SUBMITTED TO:

SCOTT M. KORPI  
C/O AMERICAN CONSULTING ENGINEERS OF FLORIDA, LLC  
4111 LAND O' LAKES BOULEVARD  
SUITE 210  
LAND O' LAKES, FLORIDA 34639  
(813) 996-2800

PLANS PREPARED BY:

**American**  
Consulting Engineers of Florida, LLC

4111 Land O' Lakes Blvd. Suite 210  
Land O' Lakes, Florida 34639  
Phone: (813) 996-2800 Fax: (813) 996-1908  
Certificate of Authorization No. 7110  
Vendor No. VF 043682340-001

NOTE: THE SCALE OF THESE PLANS MAY  
HAVE CHANGED DUE TO REPRODUCTION.

GOVERNING STANDARDS AND SPECIFICATIONS:  
FLORIDA DEPARTMENT OF TRANSPORTATION,  
DESIGN STANDARDS DATED JANUARY 2004,  
AND STANDARD SPECIFICATIONS FOR ROAD  
AND BRIDGE CONSTRUCTION DATED 2004,  
AS AMENDED BY CONTRACT DOCUMENTS.

REVISIONS

PROJECT LENGTH IS BASED ON  $\frac{1}{2}$  CONSTRUCTION

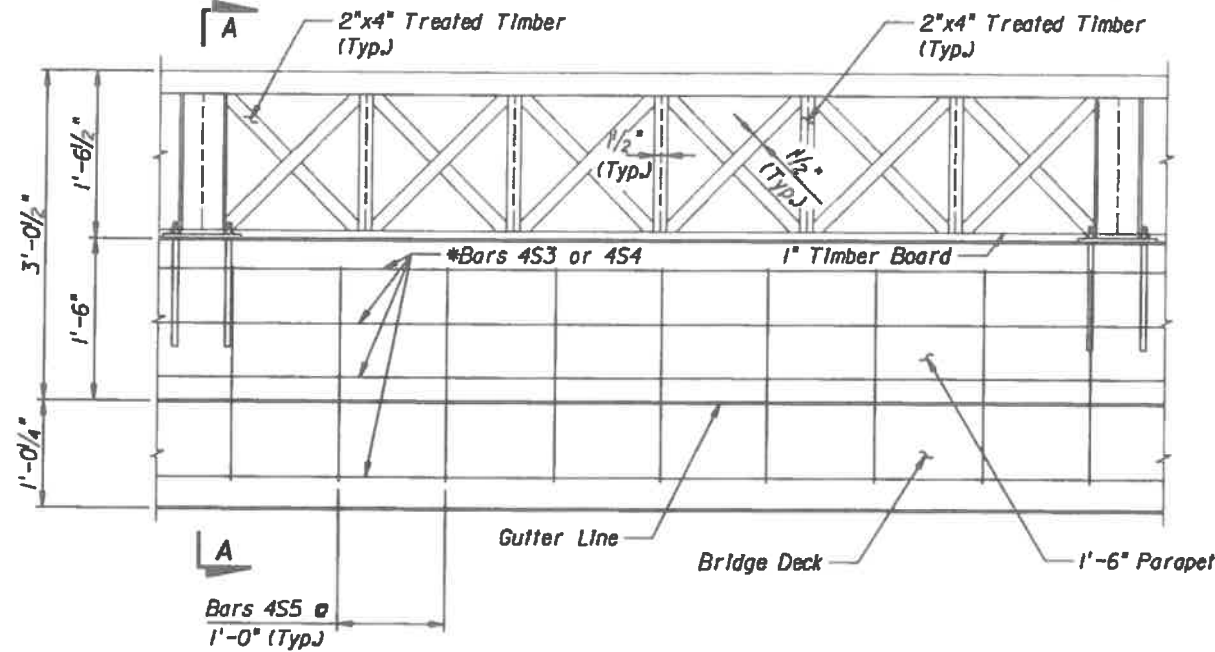
LENGTH OF PROJECT		
	LINEAR FEET	MILES
ROADWAY		
BRIDGES	65.000	0.012
NET LENGTH OF PROJECT	65.000	0.012
EXCEPTIONS		
GROSS LENGTH OF PROJECT	65.000	0.012

KEY SHEET REVISIONS		
DATE	BY	DESCRIPTION

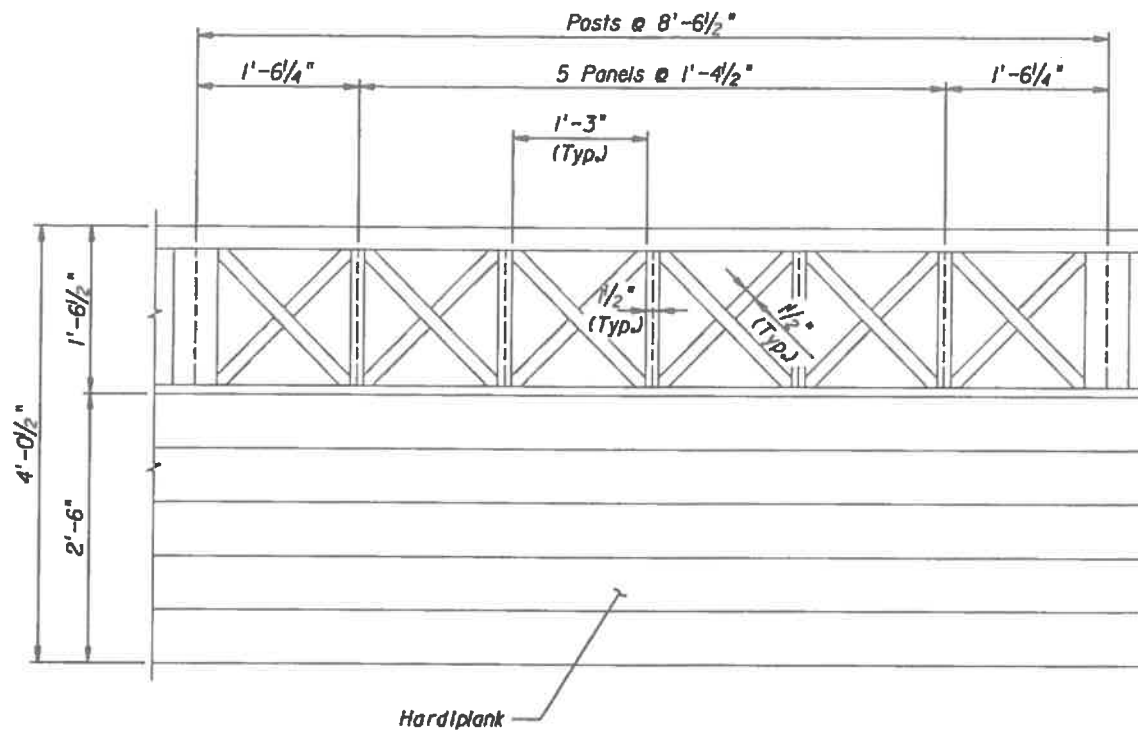
STRUCTURE PLANS  
ENGINEER OF RECORD: SCOTT M. KORPI, P.E.

P.E. NO. 50357

FISCAL YEAR	SHEET NO.
06	B-1



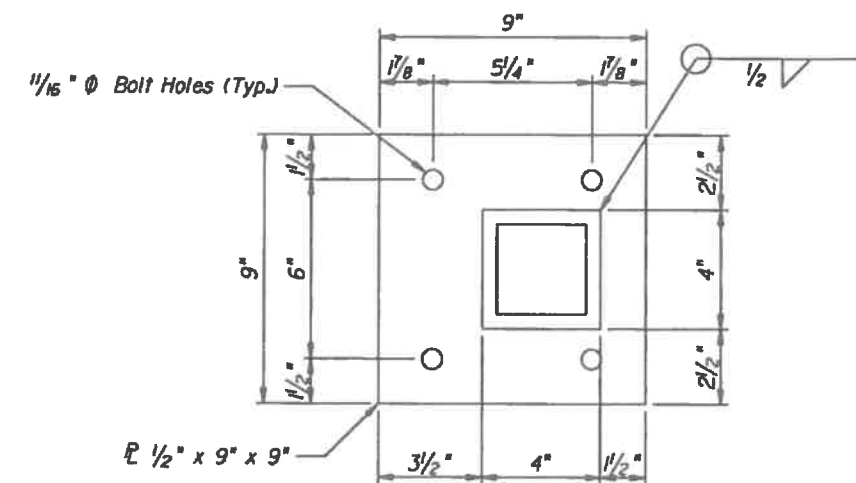
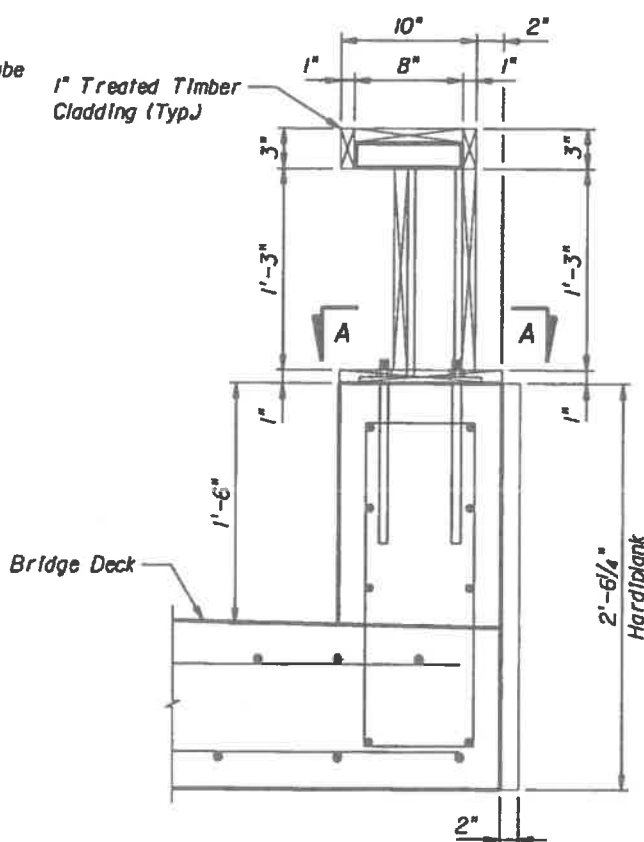
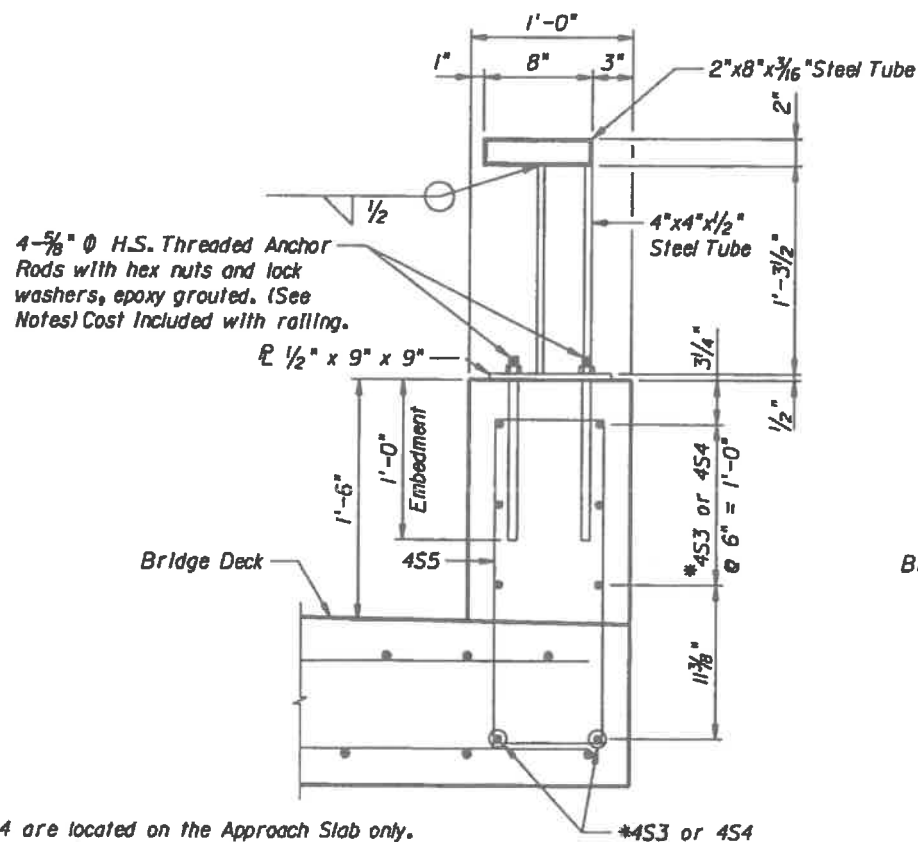
**INSIDE SECTION**  
(Deck Reinforcement Not Shown for Clarity)



**OUTSIDE SECTION**

**NOTES:**

1. All steel shapes and plates shall conform to the requirements of AASHTO M270, Grade 36.
2. Bolts, cap screws and nuts shall conform to the requirements of ASTM designation A307 except that threaded rods, nuts and washers shall conform to AASHTO M164.
3. All bolts, nuts, cap screws, washers and lock washers shall be galvanized according to AASHTO M232.
4. All posts, railing, rail splices and anchor rods shall be galvanized after shop fabrication according to AASHTO M111 and ASTM A385. Galvanized rail shall not be painted.
5. All field drilled holes shall be coated with an approved zinc rich paint before erection.
6. The Contractor shall use the capsule or the adhesive cartridge type anchor rods that have been previously tested and given a prior approval by the Department. The Contractor shall install these anchor rods in pre-drilled holes according to the manufacturer's recommendations and procedures. The capsule or the adhesive cartridge shall be sealed with premeasured amounts of the adhesive chemical.
7. Nuts for 5/8" Ø threaded anchor rods connecting the base plate to the concrete shall be tightened to a snug fit and given an additional 1/8" turn.
8. All lumber shall be treated in accordance with Standard Specification 955.
9. Hardplank shall be attached to exterior concrete bridge barrier in accordance with Manufacturer's Specifications.
10. Contractor shall use stainless steel self tapping screws to attach timber cladding to structural steel elements.



**SECTION A-A**  
(Timber not shown for clarity)

**SECTION A-A**  
(Timber shown)

**SECTION A-A**  
(Base plate shown only)

\*Bars 4S4 are located on the Approach Slab only.

\*4S3 or 4S4

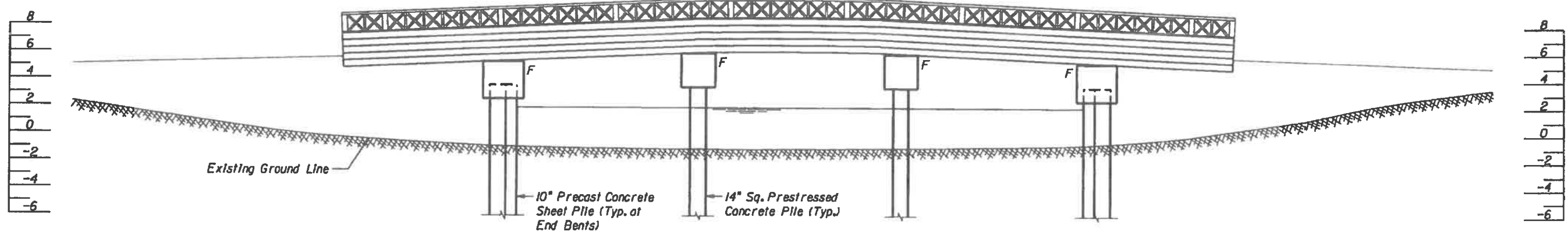
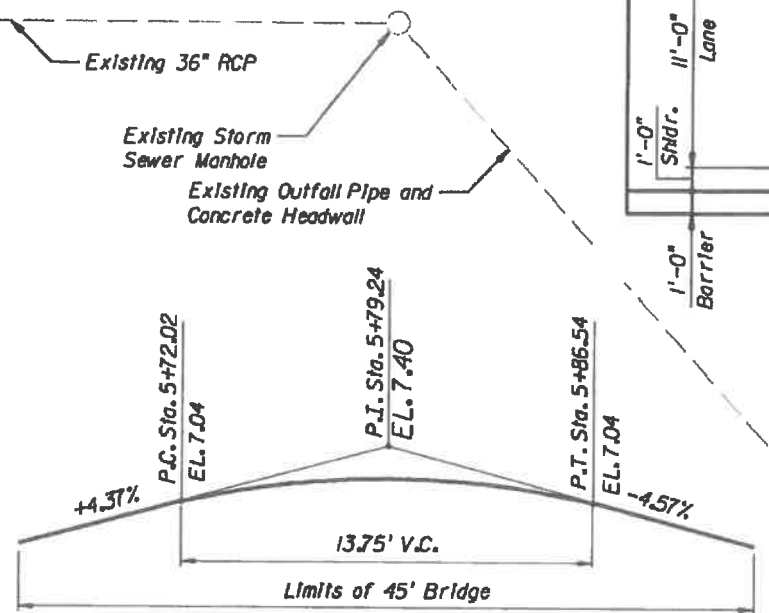
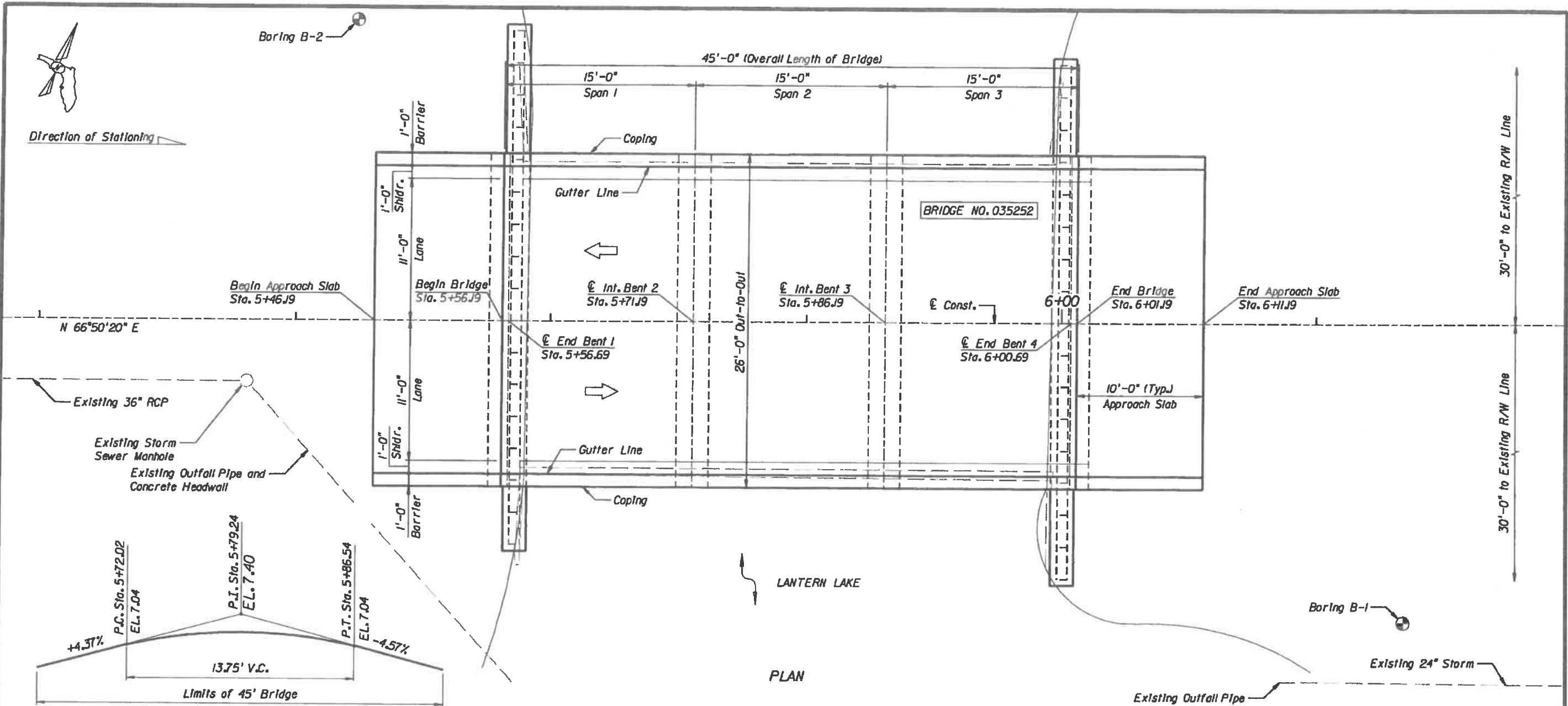
REVISIONS				NAMES		DATES		ENGINEER OF RECORD:		SHEET TITLE:				
DATE	BY	DESCRIPTION	DATE	BY	DESCRIPTION	DATE	BY	NAME	ADDRESS	ROAD NO.	COUNTY	FINANCIAL PROJECT ID	PROJECT NAME:	SHEET NO.
						9-04	JLV	<b>AMERICAN</b> Consulting Engineers of Florida, LLC 4111 Land O' Lakes Blvd. Suite 710 Land O' Lakes, Florida 34620 Phone: (813) 908-2000 Fax: (813) 908-1000 Engineering Business No. ED7110 Scott W. Korpi, P.E. No. 00307	<b>CITY OF NAPLES</b>		<b>BRIDGE RAIL</b>		<b>GALLEON DRIVE OVER LANTERN LAKE</b>	Br. No. 035252 B-10
						9-04	ADP		ROAD NO.	COLLIER	FINANCIAL PROJECT ID	N/A		
						9-04	JLV							
						10-04	DEK							
							SCOTT KORPI, PE							

12/17/2004 02:14:55 PM I:\project\503962\struct\handrail.dgn



Boring B-2

Direction of Stationing



REVISIONS				ENGINEER OF RECORD		CITY OF NAPLES		SHEET TITLE	
DATE	BY	DESCRIPTION	DATE	BY	DESCRIPTION	ROAD NO.	COUNTY	FINANCIAL PROJECT ID	PROJECT NAME
							COLLIER	N/A	GALLEON DRIVE OVER LANTERN LAKE BRIDGE NO. 035252
				DRAWN BY: JLW 9-04 CHECKED BY: ADP 9-04 DESIGNED BY: ADP 9-04 CHECKED BY: DEK 10-04 APPROVED BY: SCOTT KORPI, PE	<b>American</b> Consulting Engineers of Florida, LLC 4111 Land O' Lakes Blvd Suite 210 Land O' Lakes, Florida 34659 Phone: (813) 948-7800 Fax: (813) 948-1100 Engineering Business No. 027110 Scott M. Korpi, P.E. No. 00307		Br. No. 035252 PLAN AND ELEVATION		SHEET NO. B-11

12/17/2004 02:14:57 PM F:\proj\br035252\struct\planmeter01.dgn