


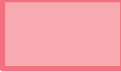
NCH

**Naples Community Hospital, Inc.
Naples Heart, Stroke & Vascular
Institute**

**Petitions –
Rezone Petition 23-R3
Conditional Use 23-CU7
SDP Petition 23-SP10**

*City Council Meeting #2
2.7.2024*

Signage Plan

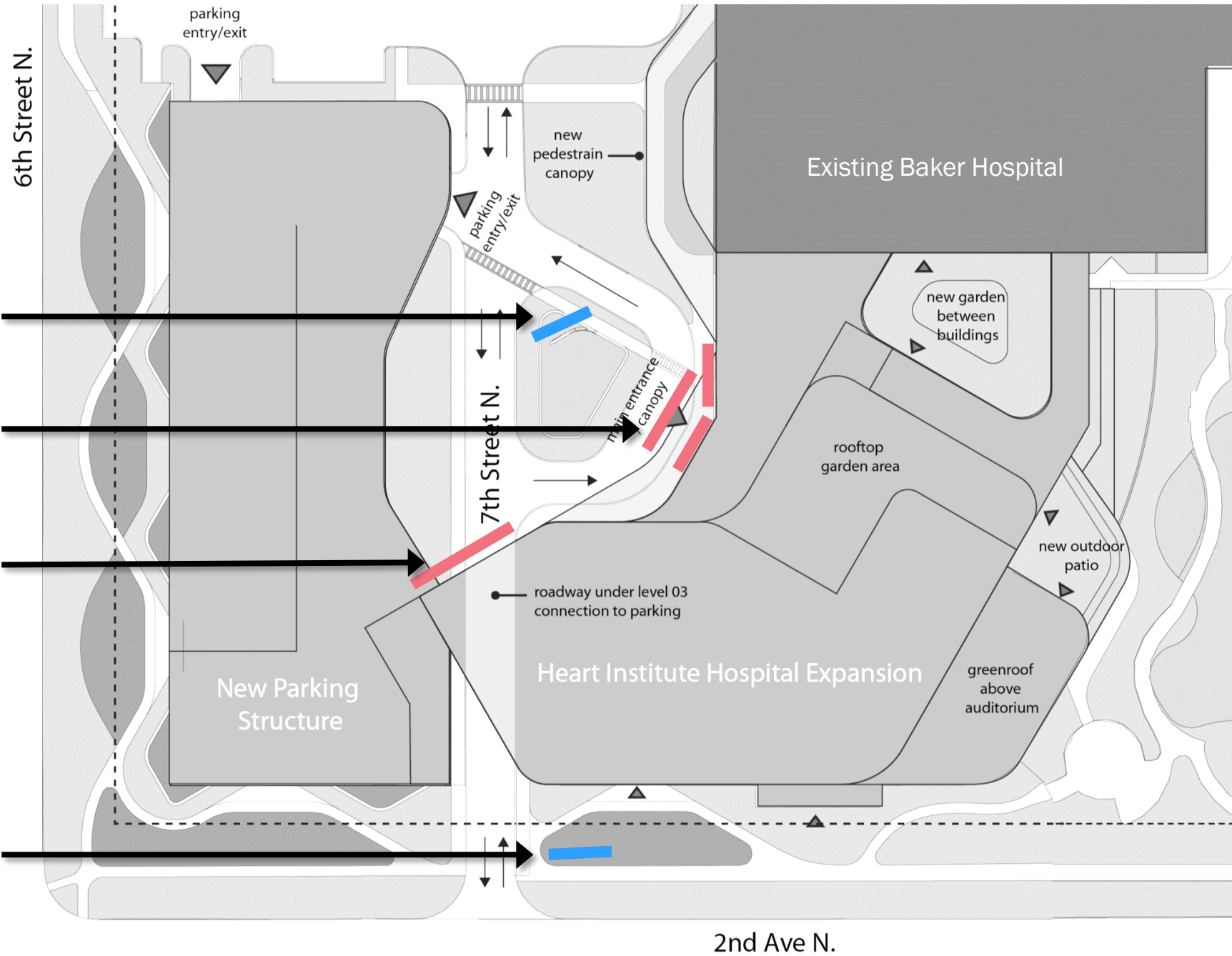
-  Monument Signage
-  Building Signage

Monument Signage 1

Building Signage 1A,2,3

Building Signage 1B

Monument Signage 2

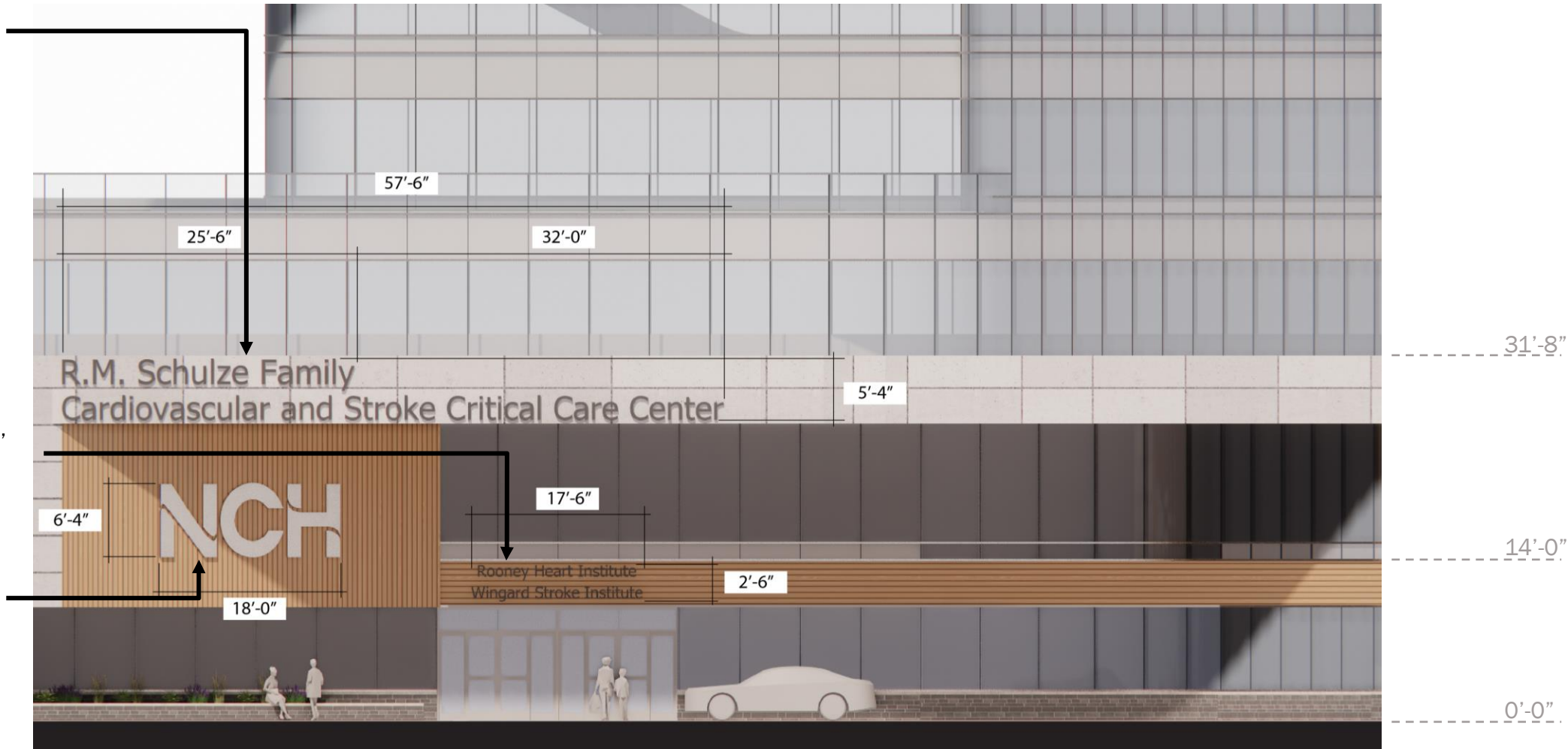


Building Signage 1A, 2, and 3

Building Signage 1A: Extruded aluminum with baked enamel finish, dark charcoal color. Lettering to be left justified. Font size: 26" tall. To be integrally backlit.

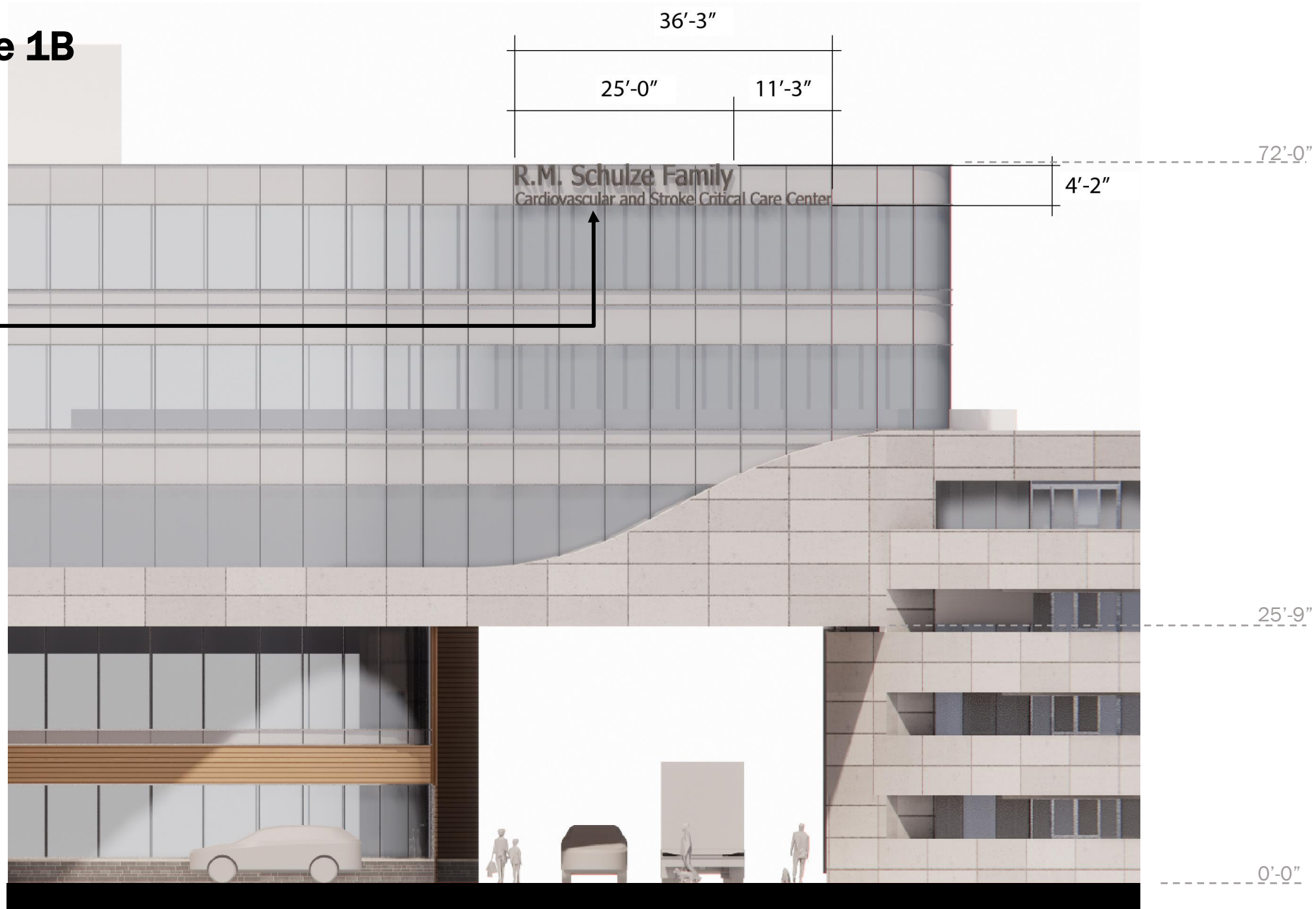
Building Signage 3: Extruded aluminum with baked enamel finish, dark charcoal color. Lettering to be centered over entry door. Font size: 12" tall.

Building Signage 2: Extruded aluminum with baked enamel finish in silver.



Building Signage 1B

Building Signage 1B: Extruded aluminum with baked enamel finish, dark charcoal color.
Lettering to be left justified.
Line 1 size: 26" tall
Line 2 size: 16" tall
To be integrally backlit.



Monument Signage 1 and 2

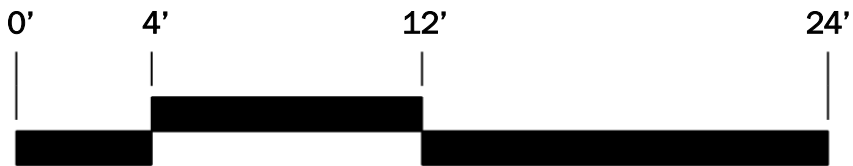
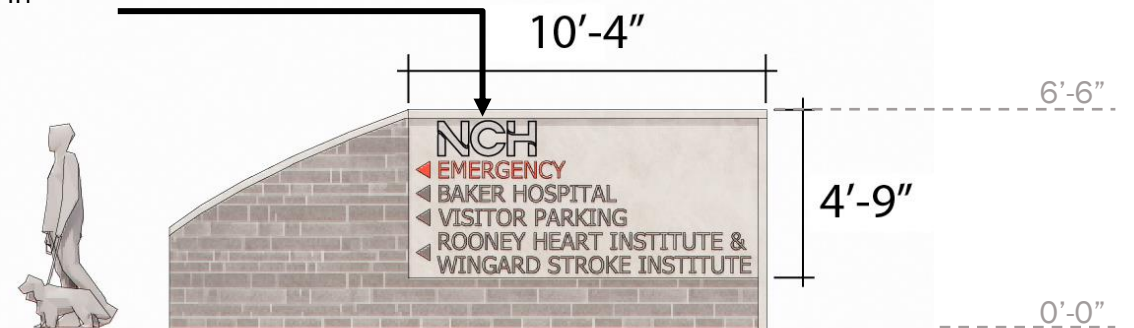
Monument Signage 1

Monument Signage 1: Extruded aluminum with baked enamel finish in silver.



Monument Signage 2

Monument Signage 2: Extruded aluminum with baked enamel finish in silver (emergency in red). Lettering to be left justified. Font size: 6" tall





R.M. Schulze Family
Cardiovascular and Stroke Critical Care Center

R.M. Schulze Family
Cardiovascular and Stroke Critical Care Center

NCH

Rooney Heart Institute
Wingard Stroke Institute

NCH