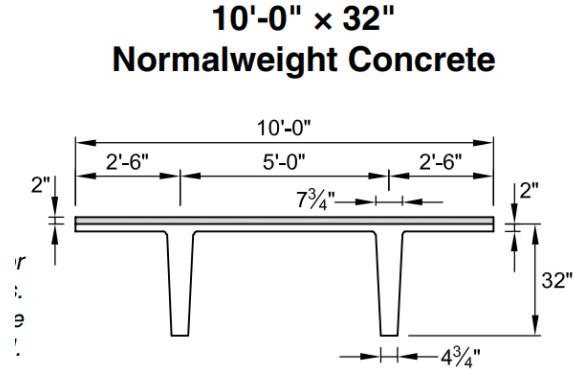


Applicable codes and minimums

Proposed Precast Structural Approach:



IBC Code heights for parking structures

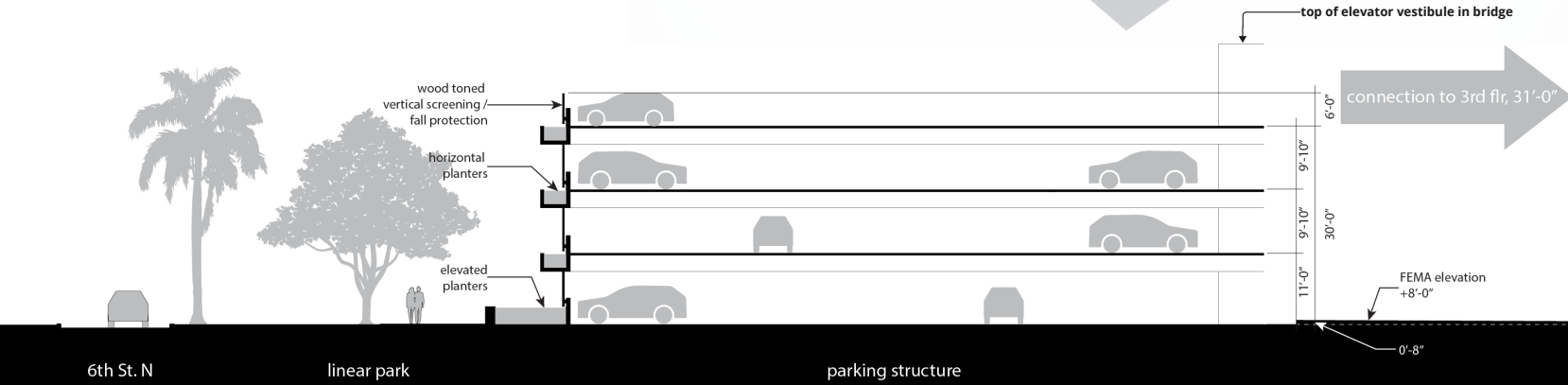
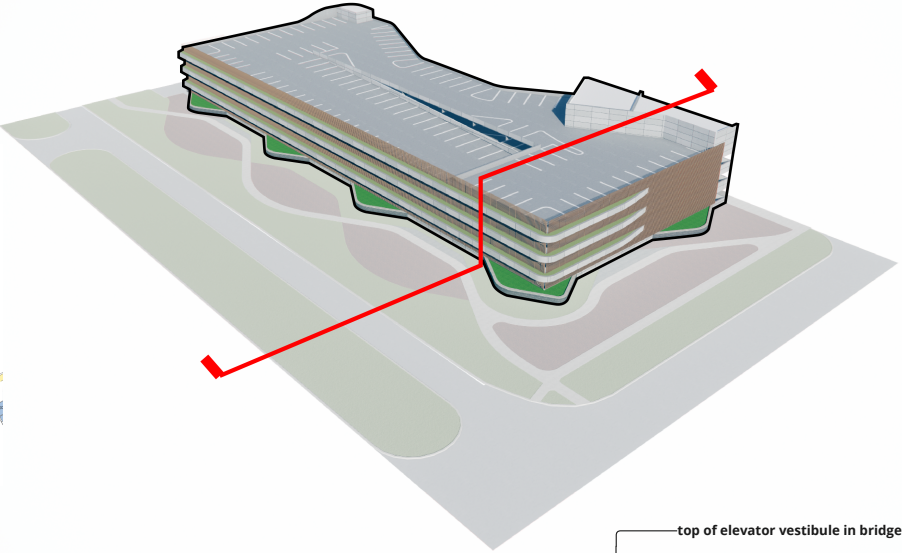
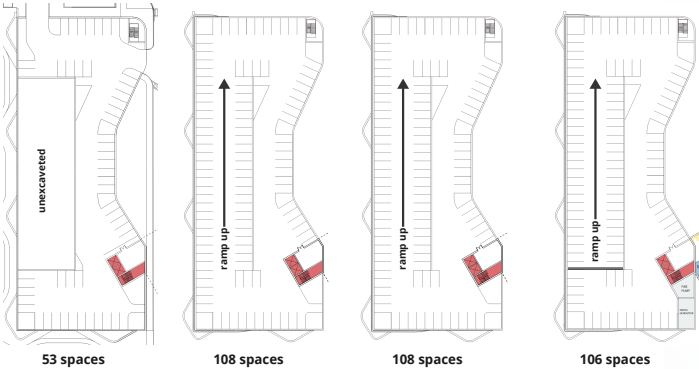
Overhead clearance heights must follow local building and accessibility codes. They're generally 7 feet (84 inches) for ordinary parking spaces and **8 feet 2 inches (98.4 inches)** for van-accessible spaces. Some parking garages have height limits below 7 feet, which can be concerning if you drive a lifted truck.

IBC Code heights barrier around parking structures

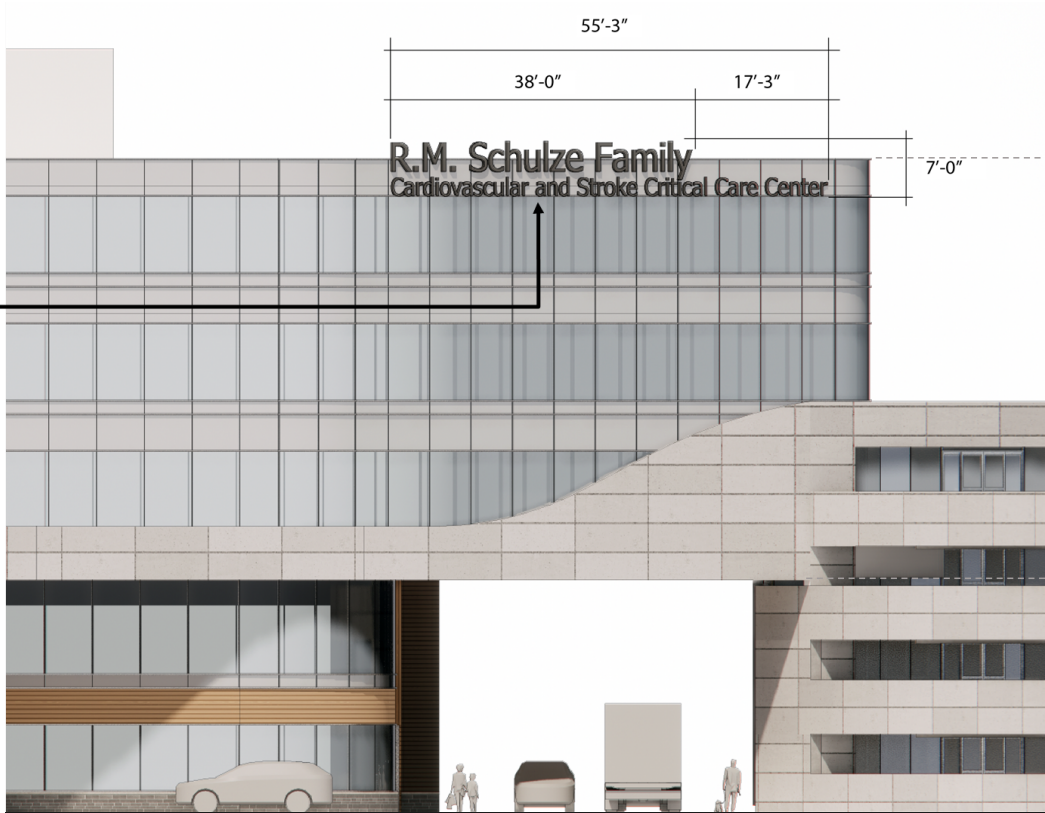
Vehicle barriers not less than **2 feet 9 inches (835 mm)** in height shall be placed where the vertical distance from the floor of a drive lane or parking space to the ground or surface directly below is greater than 1 foot (305 mm). Dec 9, 2022

Revised Parking Structure Height

375 spaces total



Building signage at top of building

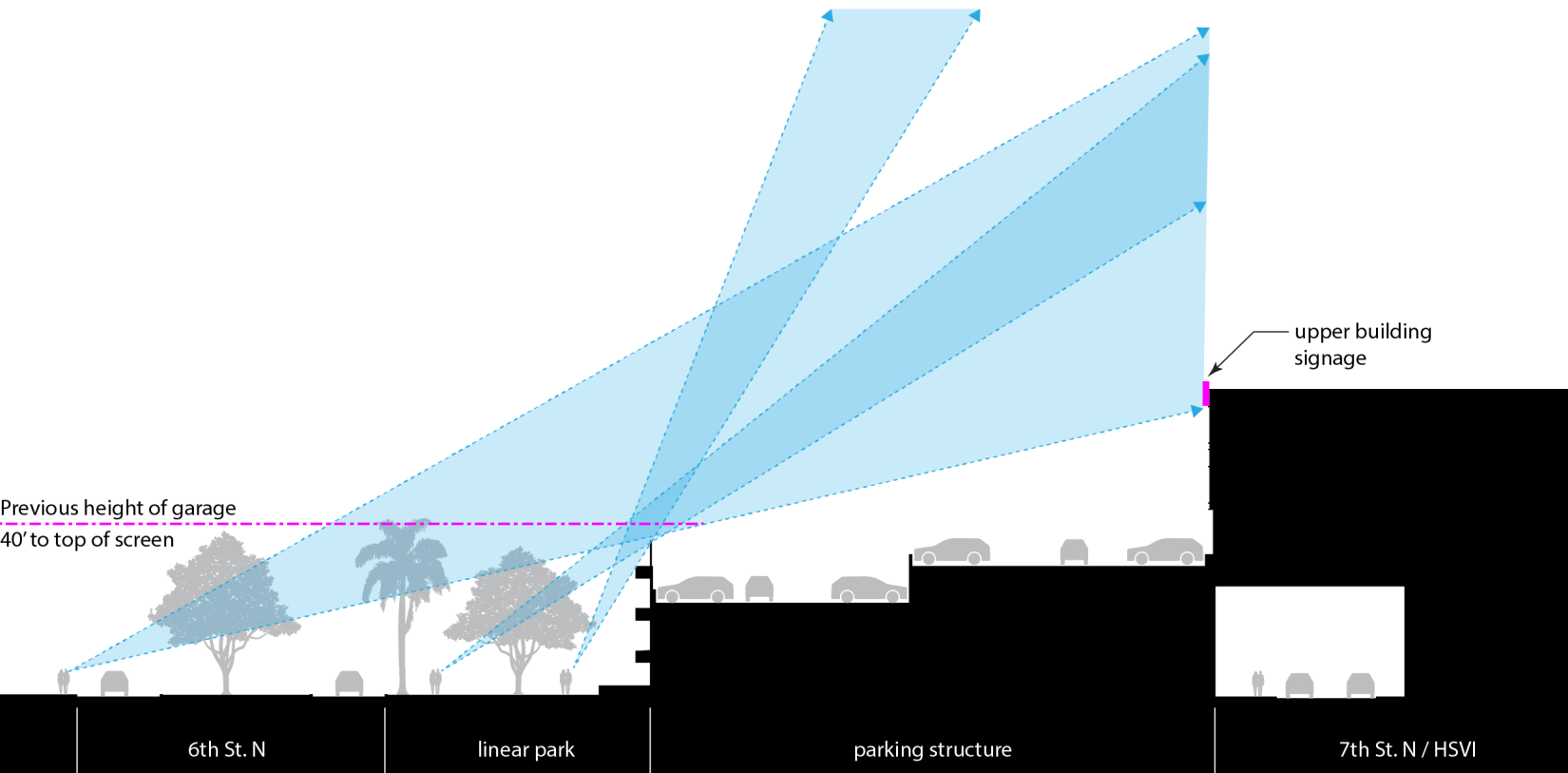


R.M. Schulze Family
Cardiovascular and Stroke Critical Care Center

Building Signage 1B: Extruded aluminum with baked enamel finish, dark charcoal color. Lettering to be left justified. Line 1 size: 36" tall. Line 2 size: 24" tall. To be integrally backlit.

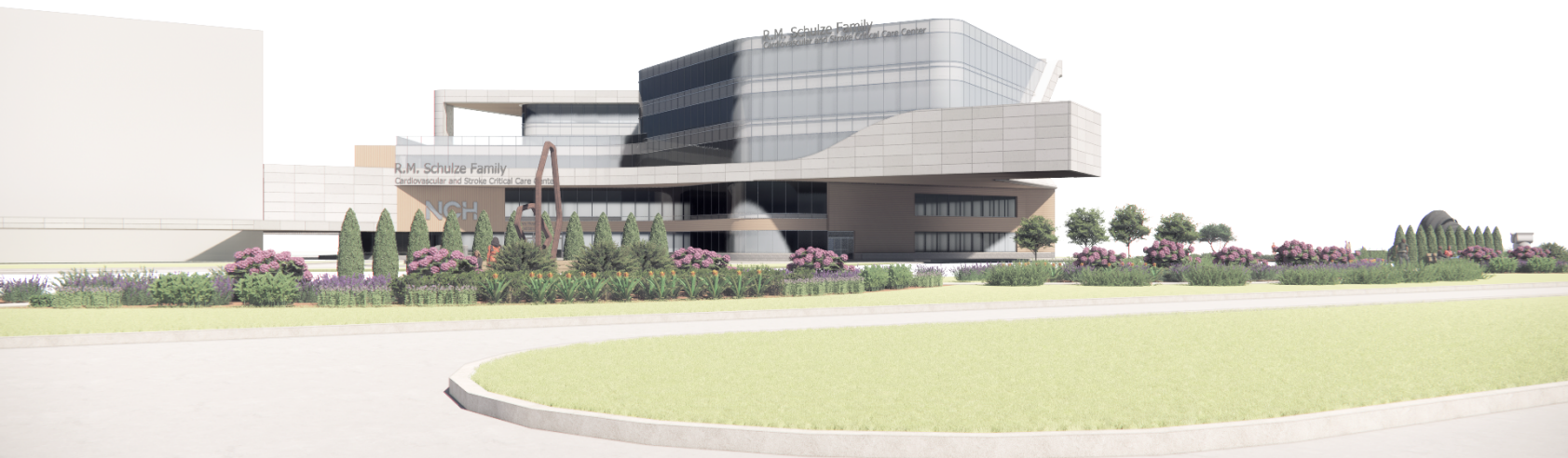


6th St. N. section towards building



Building signage at top of building

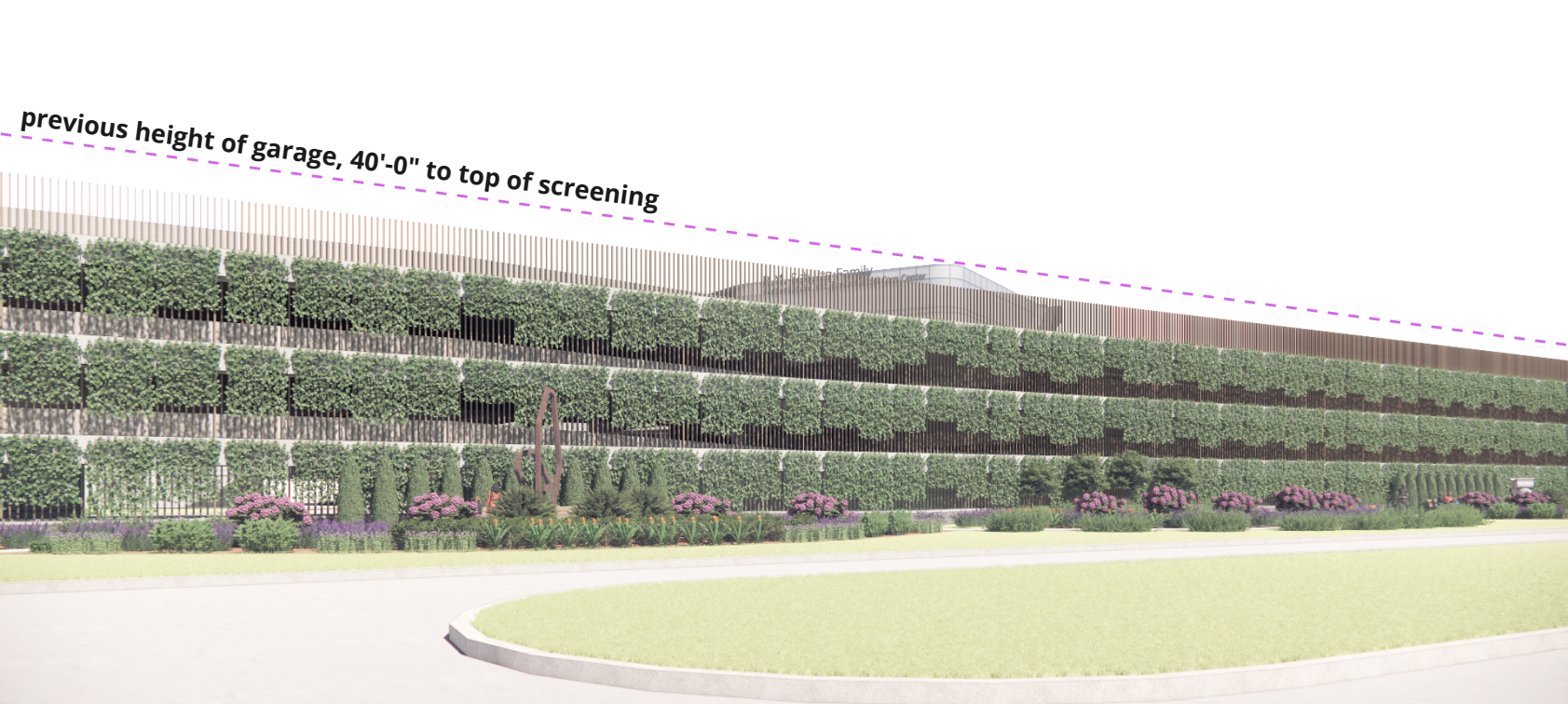
Parking structure and existing trees hidden



Building signage at top of building

Existing trees hidden

previous height of garage, 40'-0" to top of screening



Building signage at top of building

