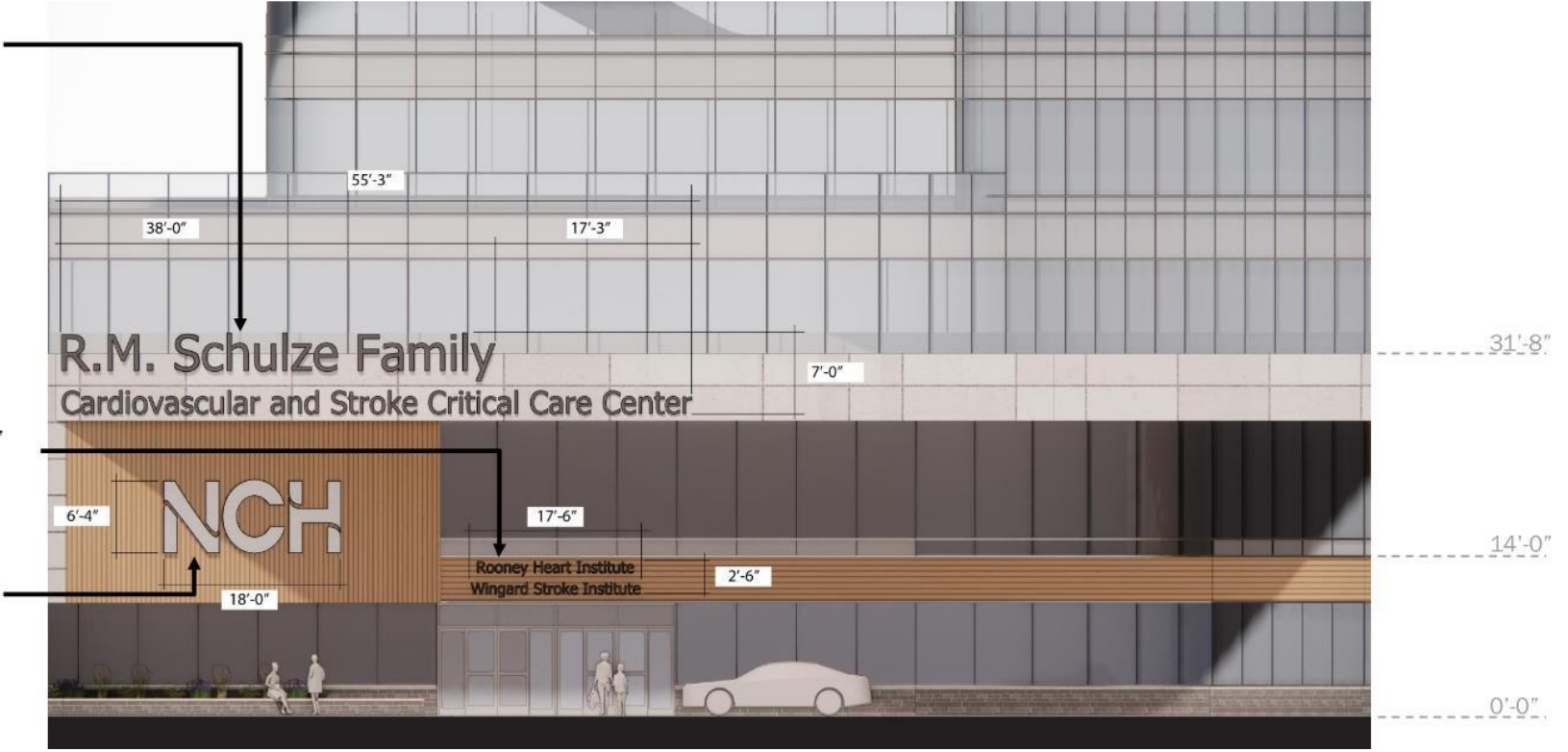


Building Signage 1A, 2, and 3

Building Signage 1A: Extruded aluminum with baked enamel finish, dark charcoal color. Lettering to be left justified.
 Line 1 size: 36" tall
 Line 2 size: 24" tall
 To be integrally backlit.

Building Signage 3: Extruded aluminum with baked enamel finish, dark charcoal color. Lettering to be centered over entry door.
 Font size: 12" tall

Building Signage 2: Extruded aluminum with baked enamel finish in silver.



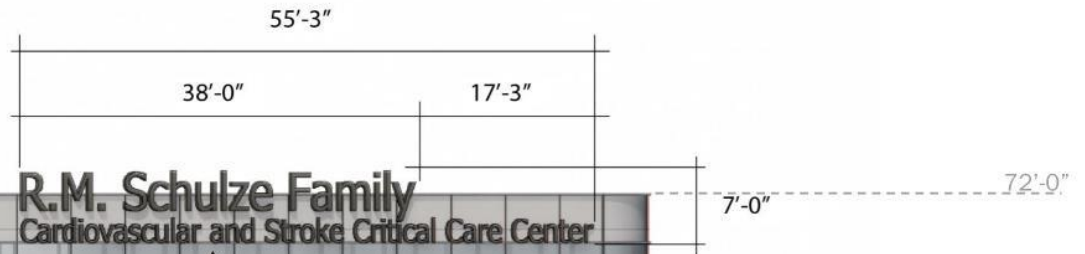
CANNONDESIGN



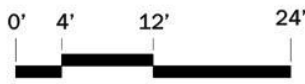
studio+

Building Signage 1B

Building Signage 1B: Extruded aluminum with baked enamel finish, dark charcoal color. Lettering to be left justified.
Line 1 size: 36" tall
Line 2 size: 24" tall
To be integrally backlit.



R.M. Schulze Family
Cardiovascular and Stroke Critical Care Center



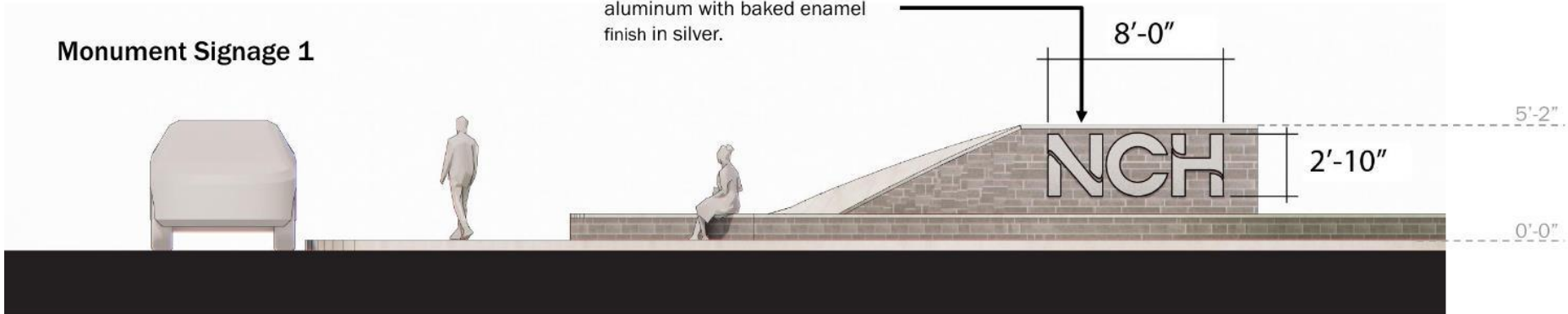
CANNONDESIGN

studio+

Monument Signage 1 and 2

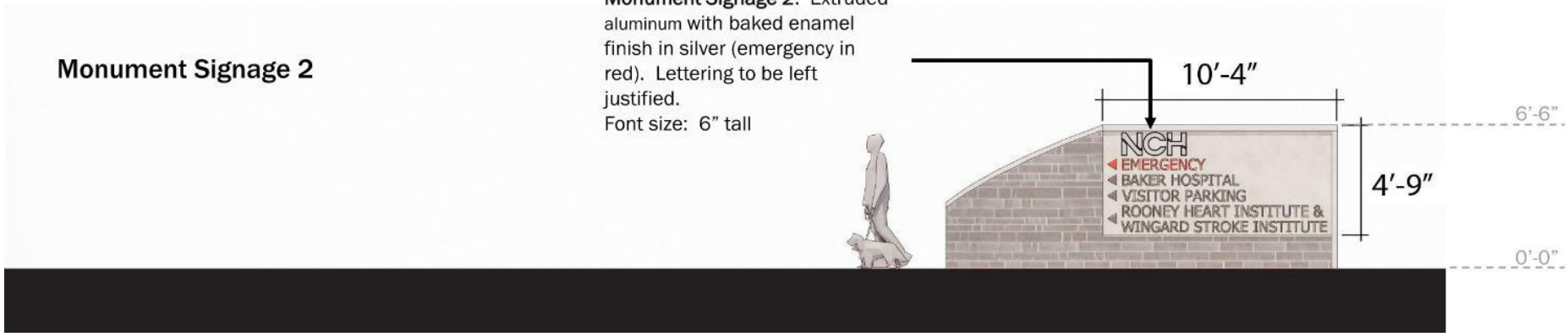
Monument Signage 1

Monument Signage 1: Extruded aluminum with baked enamel finish in silver.



Monument Signage 2

Monument Signage 2: Extruded aluminum with baked enamel finish in silver (emergency in red). Lettering to be left justified. Font size: 6" tall



NCH

CANNONDESIGN

studio+

Signage Plan

- Monument Signage
- Building Signage

