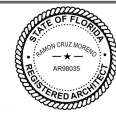




Naples Community Hospital
NCH Heart, Stroke & Vascular Institute Expansion

PROPOSED PLANS

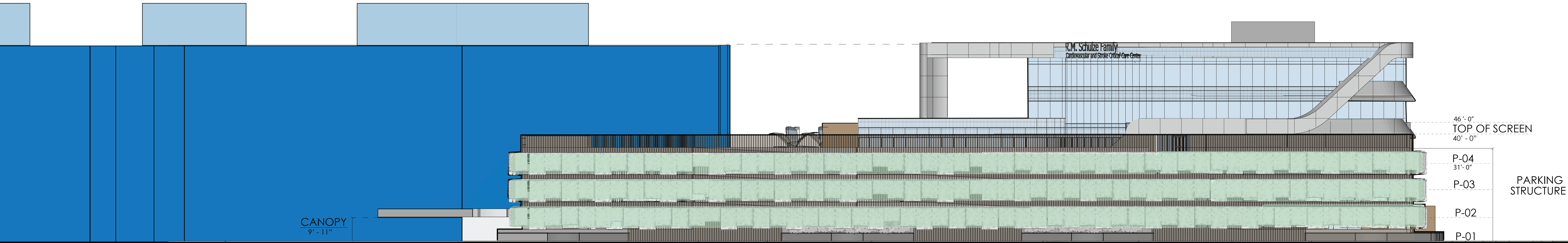
CANNONDESIGN



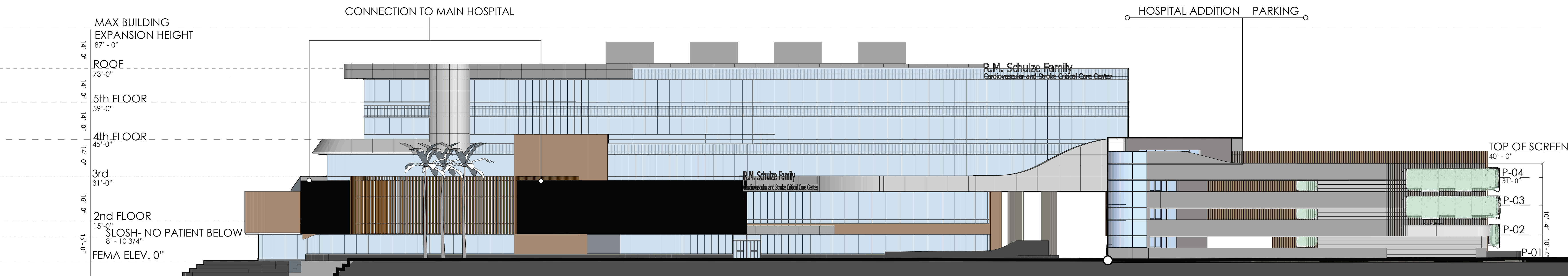
studio+

MATERIAL LEGEND

- WA-1: Glassfibre reinforced concrete facade panels (same color, mix of 3 finish textures)
- WA-2: Interlocking aluminum cladding panels with woodgrain finish. White ash color/texture selection
- WA-3: Aluminum clip-batten system with woodgrain finish. White ash color/texture selection
- WA-4: Thin calcium silicate units (cast stone), dark grey color
- CW-1 and SF-1: Insulated vision glass
- CW-2 and SF-2: Insulated spandrel glass



WEST ELEVATION
1/16" = 1'-0"

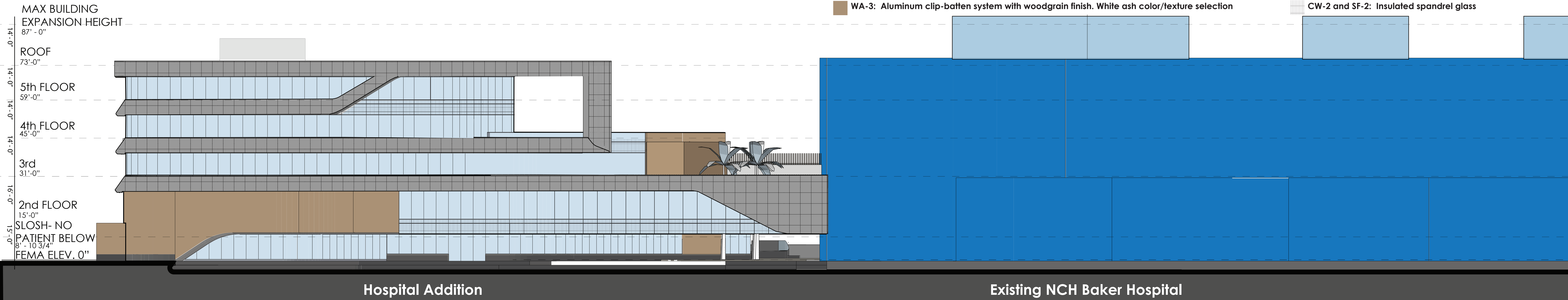


NORTH ELEVATION
1/16" = 1'-0"



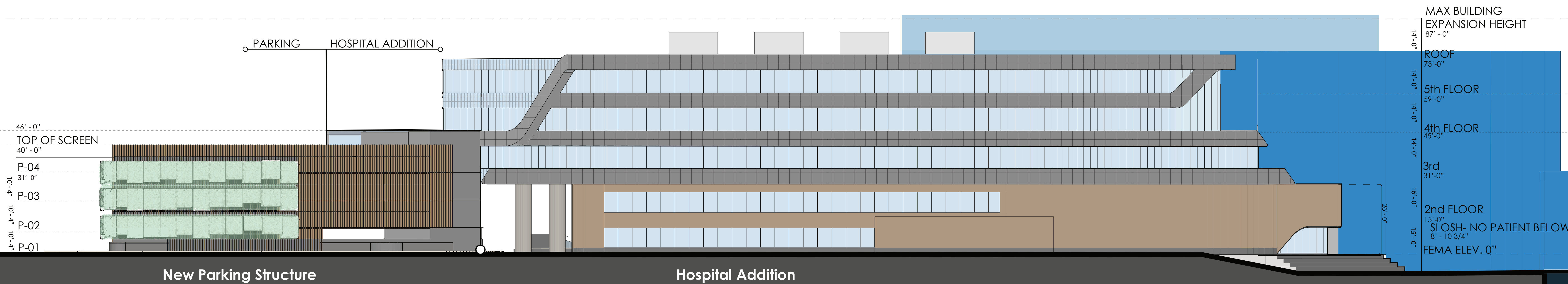
MATERIAL LEGEND

- WA-1: Glassfibre reinforced concrete facade panels (same color, mix of 3 finish textures)
- WA-2: Interlocking aluminum cladding panels with woodgrain finish. White ash/texture selection
- WA-3: Aluminum clip-batten system with woodgrain finish. White ash color/texture selection
- WA-4: Thin calcium silicate units (cast stone), dark grey color
- CW-1 and SF-1: Insulated vision glass
- CW-2 and SF-2: Insulated spandrel glass



EAST ELEVATION

1/16" = 1'-0"

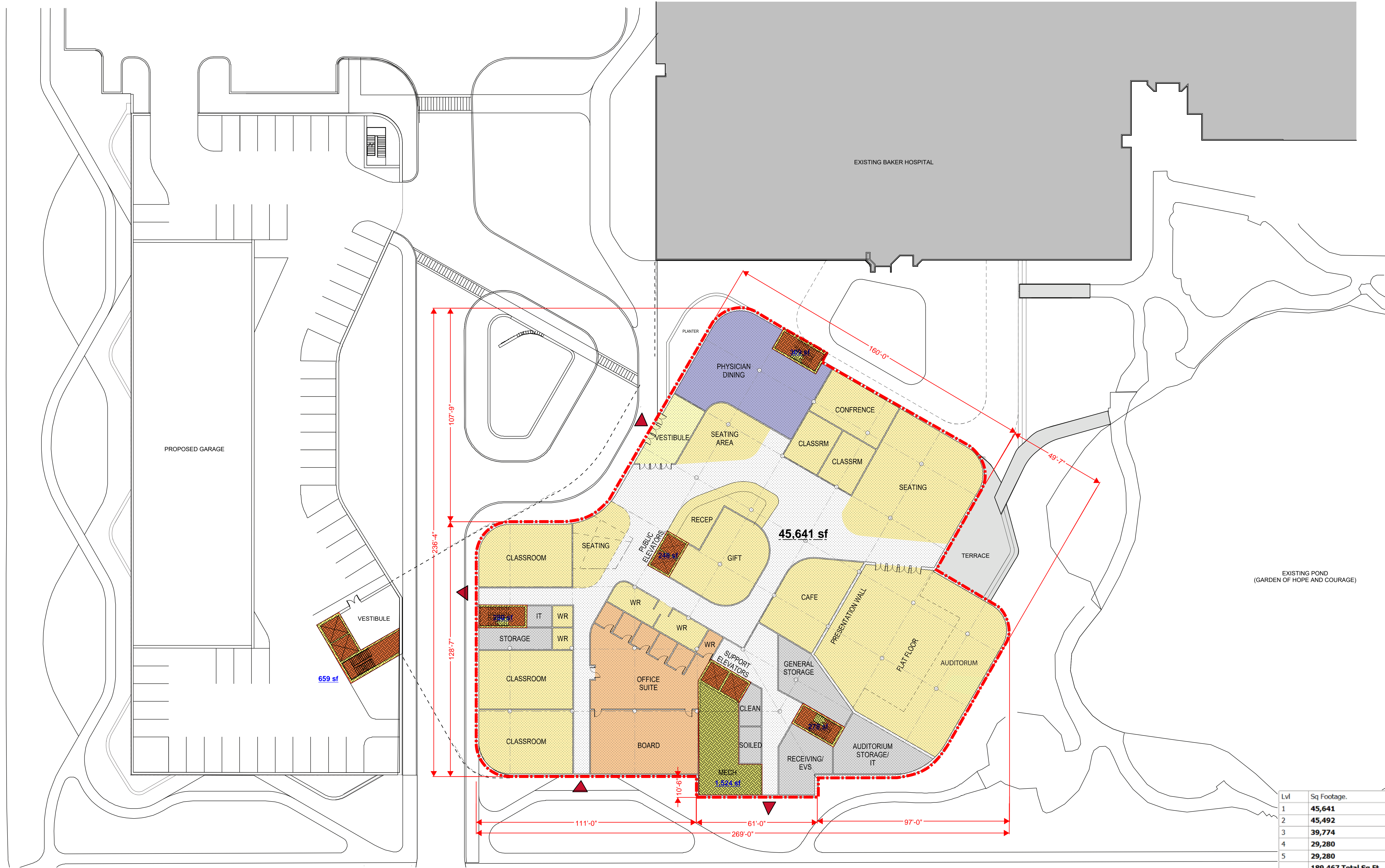


SOUTH ELEVATION

1/16" = 1'-0"

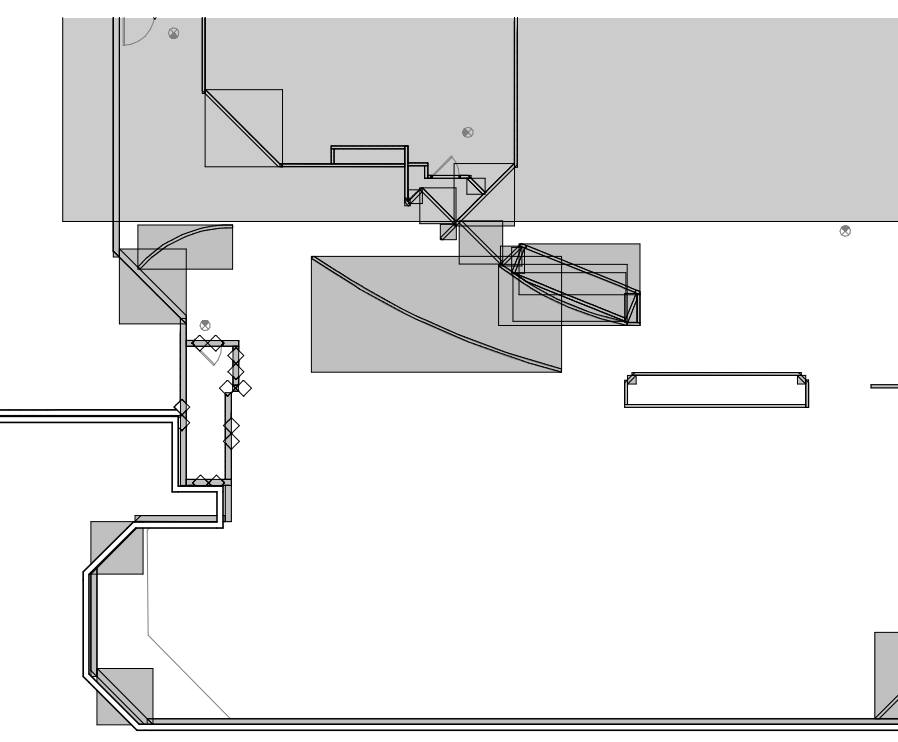
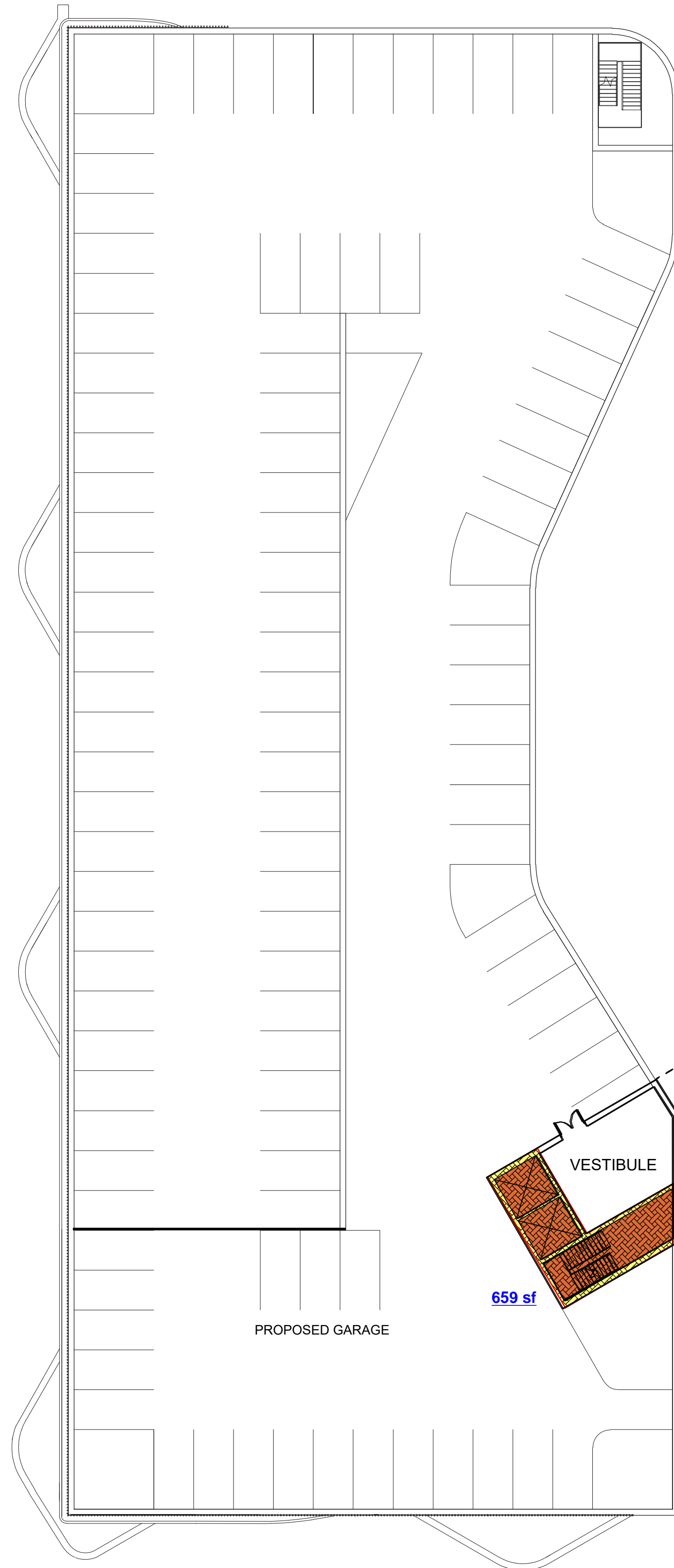


LAKE AT GARDEN OF HOPE



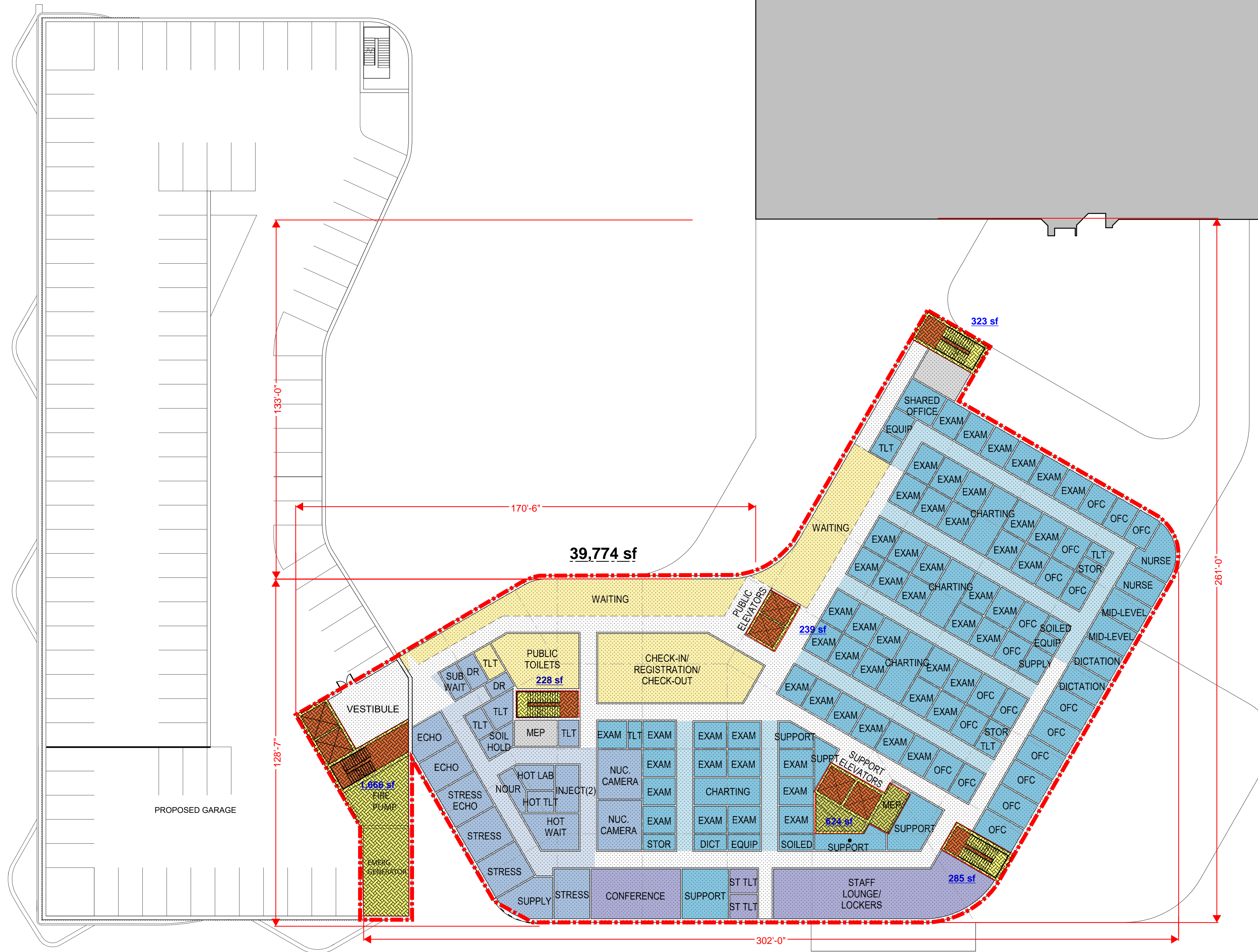
EXISTING POND
(GARDEN OF HOPE AND COURAGE)

Lvl	Sq Footage.
1	45,641
2	45,492
3	39,774
4	29,280
5	29,280
189,467 Total Sq Ft.	



Lvl	Sq Footage.
1	45,641
2	45,492
3	39,774
4	29,280
5	29,280
189,467 Total Sq Ft.	

SCALE: 3/64" = 1'-0"



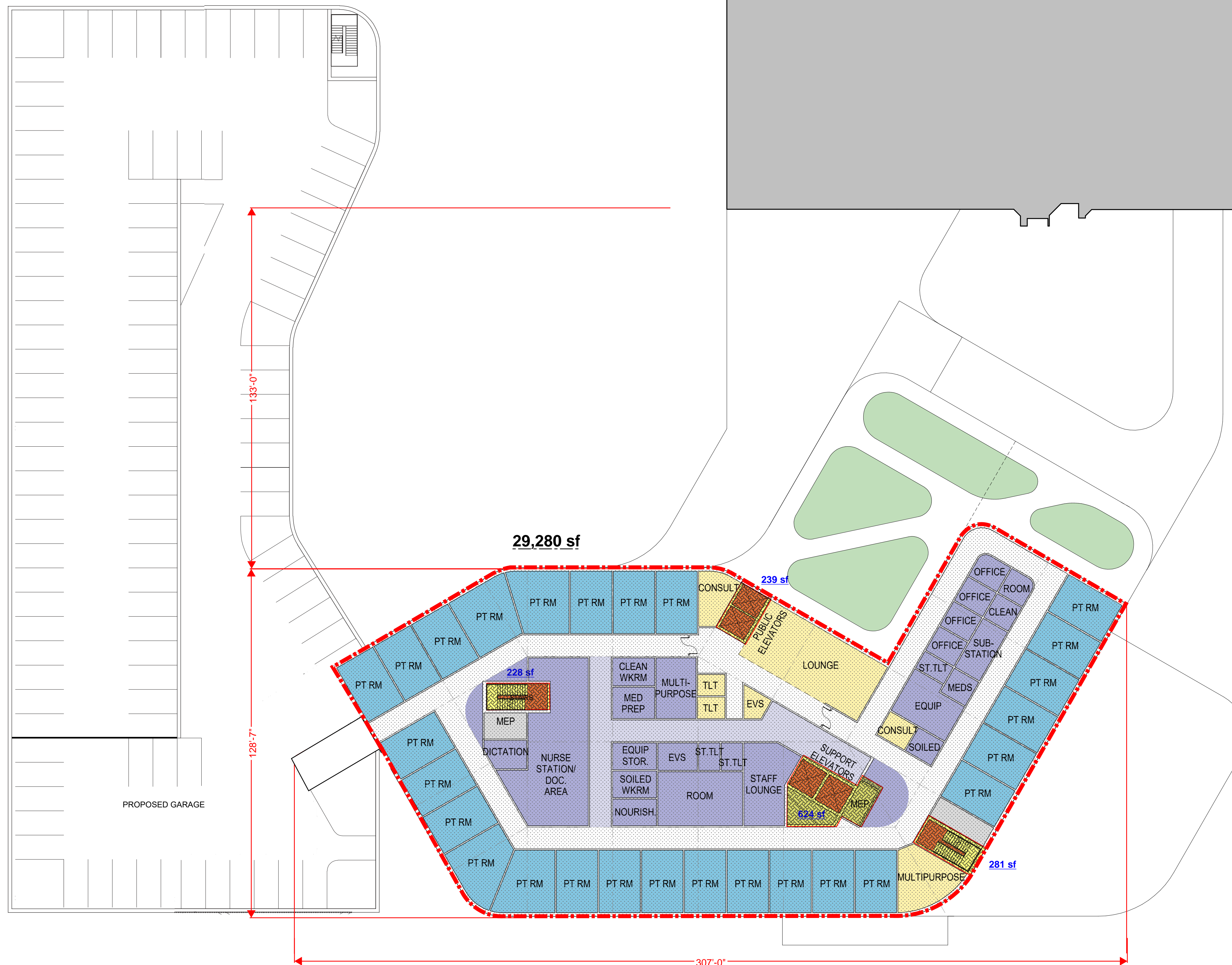
Lvl	Sq Footage.
1	45,641
2	45,492
3	39,774
4	29,280
5	29,280
189,467 Total Sq Ft.	

SCALE: 3/64" = 1'-0"



NCH HEALTHCARE HEART INSTITUTE

CANNONDESIGN



Lvl	Sq Footage.
1	45,641
2	45,492
3	39,774
4	29,280
5	29,280
189,467 Total Sq Ft.	



NCH HEALTHCARE HEART INSTITUTE