

Chick-fil-A
 5200 Buffington Road
 Atlanta, Georgia 30349-2998

Bowman

Certificate of Authorization License No. 30462
 370 SE 17th St, Suite 300
 Fort Lauderdale, FL 33316
 Phone: (954) 774-8481
 www.bowman.com
 © 2021 Bowman Consulting Group Ltd

Seal

ANDRES MIZRAHI, P.E.
 FLORIDA REG. NO. 92421

CHICK-FIL-A
NAPLES COASTLAND
 2355 N TAMAMI TRAIL (US 41)
 NAPLES, FL 34103

FSU#05638

BUILDING TYPE / SIZE: CUSTOM
 RELEASE:

NO.	DATE	DESCRIPTION
△	-/-20-	REVISION 1

REVISION SCHEDULE	
NO.	DATE
1	3/7/2024

CONSULTANT PROJECT # 010014-01-226
 PRINTED FOR PERMIT
 DATE 3/7/2024
 DRAWN BY NCE

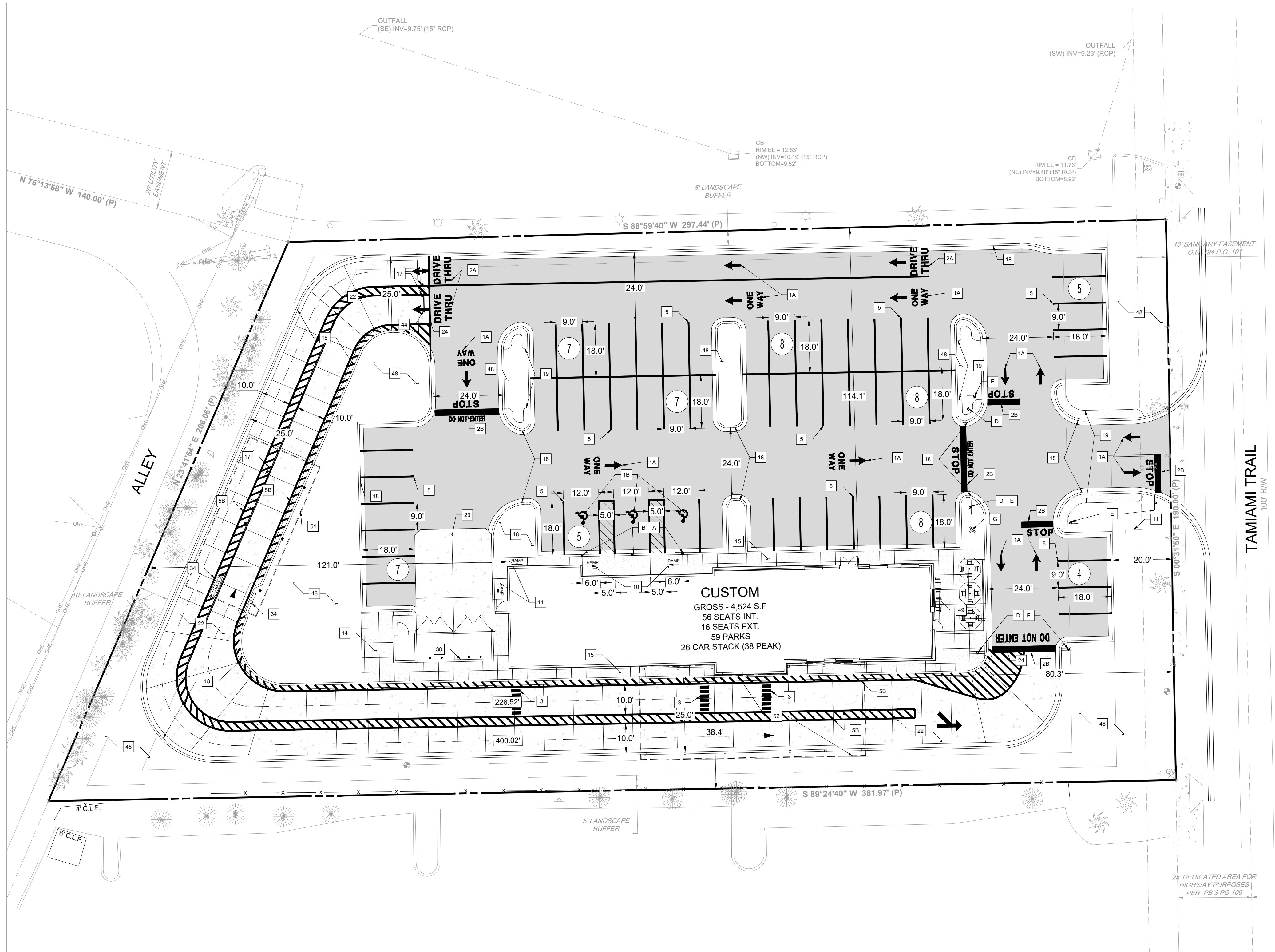
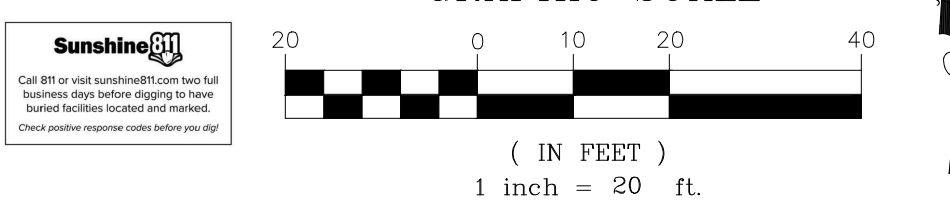
Information contained on this drawing and in all digital files produced for above named project may not be reproduced in any manner without express written or verbal consent from authorized project representatives.

SHEET
 SITE PLAN

SHEET NUMBER
C-2.0

SITE PLAN DESIGN NOTES & KEY PLAN

- 1A DIRECTIONAL ARROW (C-4.0)
- 1B PAINTED HANDICAP PARKING SYMBOL (C-4.0)
- 2A DRIVE-THRU GRAPHICS (C-4.0)
- 2B STOP BAR GRAPHIC (C-4.0)
- 3 CROSSWALK MARKINGS (C-4.0)
- 4 MULTI-LANE DIRECTIONAL GRAPHICS (C-4.0)
- 5 STANDARD OR HANDICAP PARKING STALL PER CODE (C-4.0)
- 5A 4" SOLID WHITE STRIPING
- 5B 4" SOLID YELLOW STRIPING
- 5C 4" SKIP DASH YELLOW STRIPING
- 6 SOLID PLASTIC WHEEL STOP (C-4.0)
- 7 BOLLARD MOUNTED SIGN (C-4.0)
- 8 CURB RAMP w/ SHORT FLARED SIDES (GRASSED AREAS) (C-4.0)
- 9 CURB RAMP w/ FLARED SIDES (IN SIDEWALK) (C-4.0)
- 10 RETURNED CURB HANDICAP RAMP (C-4.0)
- 11 SIDEWALK ACCESSIBLE RAMP (C-4.1)
- 12 DETECTABLE WARNING DEVICE (C-4.1)
- 13 TYPICAL ADA RAMP & HANDRAIL (C-4.1)
- 14 CONCRETE SIDEWALK (C-4.1)
- 15 CONCRETE SIDEWALK w/ CURB & GUTTER (C-4.1)
- 16 ENTRY DOOR FROST SLAB DETAIL (C-4.1)
- 17 CONCRETE BOLLARD (C-4.1)
- 18 CONCRETE CURB & GUTTER (C-4.1)
- 18A SPILLING CURB & GUTTER
- 18B CATCHING CURB & GUTTER
- 18C DEPRESSED SPILLING CURB & GUTTER
- 18D DEPRESSED CATCHING CURB & GUTTER
- 18E SPILLING GUTTER SECTION AT ACCESSIBLE RAMP
- 18F CATCHING GUTTER SECTION AT ACCESSIBLE RAMP
- 18G MOUNTABLE CURB & GUTTER
- 19 LANDSCAPE & IRRIGATION PROTECTOR (C-4.1)
- 20 TYPICAL HMAc PAVEMENT SECTION (C-4.2)
- 21 BUTT JOINT (C-4.2)
- 22 CONCRETE PAVEMENT DRIVE-THRU LANE (C-4.2)
- 23 CONCRETE APRON AT TRASH ENCLOSURE (C-4.2)
- 24 PAVEMENT EDGE DETAIL (START & END OF DRIVE-THRU LANES) (C-4.2)
- 25 CONCRETE PAVEMENT SECTIONS (C-4.2)
- 26 TRANSVERSE & LONGITUDINAL CONTRACTION JOINT (C-4.2)
- 27 TRANSVERSE & LONGITUDINAL DOWELED CONSTRUCTION JOINT (C-4.2)
- 28 CONTRACTION JOINT (C-4.2)
- 29 KEYED CONSTRUCTION JOINT (C-4.2)
- 30 LONGITUDINAL BUTT JOINT (C-4.2)
- 31 EXPANSION JOINT (C-4.2)
- 32 DRIVE-THRU PLAN - FLUSH WITH FFE FOR CONCRETE PAVING (C-4.3)
- 33 DRIVE-THRU ISOMETRIC (C-4.3)
- 34 DRIVE-THRU ORDER POINT ISLAND (C-4.3)
- 35 MENU BOARD LOOP DETECTION SYSTEM (C-4.3)
- 36 BUILDING DOWNSPOUT CONNECTION (TO SITE DRAINAGE SYSTEM) (C-4.3)
- 37 CANOPY DOWNSPOUT CONNECTION (TO SITE DRAINAGE SYSTEM) (C-4.3)
- 38 SCREENED REFUSE ENCLOSURE (REFER TO ARCH PLANS FOR ADDITIONAL DETAILS) (C-4.3)
- 39 CLEAN-OUT (OUTSIDE OF BUILDING) (C-4.3)
- 40 THICKENED PAVEMENT @ STRUCTURES (C-4.3)
- 41 STORM STRUCTURE WEEP HOLE DETAILS (C-4.3)
- 42 ALUMINUM HANDRAIL (REFER TO ARCH PLANS)
- 43 BUILDING DOWNSPOUT CONNECTION
- 44 DRIVE-THRU CLEARANCE BAR (REFER TO SIGNAGE PACKAGE)
- 45 GREASE TRAP
- 46 PROPOSED TRANSFORMER
- 47 BIKE RACK
- 48 LANDSCAPED AREA
- 49 TYPICAL LOCATION FOR OUTDOOR TABLES (REFER TO ARCH PLANS)
- 50 CONCRETE PAD FOR OPTIONAL CASH STATION
- 51 FREE-STANDING ORDER POINT CANOPY
- 52 FREE-STANDING OUTSIDE MEAL DELIVERY CANOPY



LEGEND

PROP. ASPHALT DRIVE	PROPERTY LINE
PROP. CONC. SIDEWALK	EX. CONCRETE SIDEWALK
PROP. CONC. PAVEMENT	EX. ASPHALT DRIVE
PROP. TYPE "F" CURB	EX. CONCRETE D CURB
PROP. CLEARANCE BAR	EX. CURB AND GUTTER
PROP. PARKING STRIPE	EX. ELECTRIC HAND HOLE
PROP. HANDICAP MARKING	EX. SANITARY MANHOLE
PROP. SITE SIGNAGE	EX. SIGN
PROP. DIRECTIONAL ARROW	EX. WATER VALVE
PROP. BOLLARD	EX. HYDRANT
PROP. PARKING COUNT	EX. LIGHT POLE
	EX. SANITARY SEWER VALVE
	EX. WATER MAIN
	EX. STORM INLET
	EX. TREE

SITE SUMMARY

JURISDICTION	CITY OF NAPLES
ZONING	HG - HIGHWAY COMMERCIAL
USE	DRIVE-THRU RETAIL
PARCEL ID	12830560009
LOT	
SIZE	64,134 (1.47 AC)
BUILDING	
SIZE	4,524 SQ. FT.
PARKING	
SIZE	9' X 18'

BUILDING SETBACKS

SETBACKS	REQUIRED (FT)	PROVIDED (FT)
FRONT (EAST)	35	80.3
REAR (WEST)	25	121.3
SIDE (SOUTH)	10	38.4
SIDE (NORTH)	10	114.1

EXISTING SITE CALCULATIONS

AREA	SF	ACRES	%
TOTAL AFFECTED AREA	64,134	1.47	100
EXIST. PERVIOUS AREA	6,692	0.15	10.4
EXIST. IMPERVIOUS AREA	57,442	1.32	89.6
EXIST. BUILDING AREA	8,521	0.20	13.3
EXIST. PAVEMENT AREA	48,921	1.12	76.3

PROPOSED SITE CALCULATIONS

AREA	SF	ACRES	%
TOTAL AFFECTED AREA	64,134	1.47	100
PROP. PERVIOUS AREA	17,064.1	0.39	26.6
PROP. IMPERVIOUS AREA	47,070	1.08	73.4
PROP. BUILDING AREA	4,524	0.10	7.1
PROP. PAVEMENT AREA	42,546	0.98	66.3

LANDSCAPE BUFFERS

SETBACKS	REQUIRED (FT)	PROVIDED (FT)
FRONT (EAST)	20	20.0
REAR (WEST)	5	11.33
SIDE (SOUTH)	5	12.00
SIDE (NORTH)	5	5.19

PARKING CALCULATIONS

USE	QTY	RATIO	REQUIRED
GROSS FLOOR AREA	4,524	1 SPACES PER EACH 100 S.F.	46
STANDARD PARKING PROVIDED			56
HANDICAP PARKING REQUIRED			3
HANDICAP PARKING PROVIDED			3
TOTAL PARKING PROVIDED			59

- SIGN LEGEND**
- ** CONTRACTOR TO REFER TO THE SIGNAGE PACKAGE FOR PLACEMENT AND SPECIFICATIONS OF ALL SIGNS **
- A HANDICAP PARKING SIGN (SEE SIGNAGE PACKAGE) R7-8; 12" X 18" (TYP.)
 - B HANDICAP PARKING FINE SIGN (SEE SIGNAGE PACKAGE) 6" X 12" (TYP.)
 - C "VAN ACCESSIBLE" SIGN (SEE SIGNAGE PACKAGE) R7-8P; 6" X 12" (TYP.)
 - D "DO NOT ENTER" SIGN (SEE SIGNAGE PACKAGE) R5-1; 24" X 24" (TYP.)
 - E STOP SIGN (SEE SIGNAGE PACKAGE) R1-1; 30" X 30" (TYP.)
 - F CFA PEDESTRIAN CROSSING SIGN (SEE SIGNAGE PACKAGE)
 - G FLAG POLE (SEE SIGNAGE PACKAGE)
 - H CFA MONUMENT OR PYLON SIGN
 - I DIGITAL DRIVE-THRU MENU BOARDS

FILE PATH: \\V:\010104 - Chick-fil-A\010104-01-226 (R00) - CFA 5200A Naples Coastland FSU Naples FSU\Signage\010104-01-226-01.dwg 3/7/2024
 THIS DOCUMENT, TOGETHER WITH THE CONCEPTS AND RECORD PREPARED HEREIN, IS AN INSTRUMENT OF SERVICE. IT IS INTENDED ONLY FOR THE SPECIFIC PURPOSES AND CLIENT FOR WHICH IT WAS PREPARED. REUSE OF ANY INFORMATION CONTAINED IN THIS DOCUMENT WITHOUT WRITTEN AUTHORIZATION AND ADAPTATION BY BOWMAN CONSULTING SHALL BE WITHOUT LIABILITY TO BOWMAN CONSULTING.