



DRYWALL PLAN KEY NOTES	
01	FRAMELESS TEMPERED GLASS WINE ENCLOSURE PER OWNER SELECTION.
02	FRAMELESS TEMPERED GLASS DOOR
03	BUILT IN BANQUETTES PER OWNER SELECTION
04	BUILT IN BOOTHS PER OWNER SELECTION
05	BAR CABINETS AND TOP PER OWNER SELECTION
06	LINE OF DROP SOFFIT ABOVE. REFER TO RCP FOR ADDITIONAL INFORMATION
07	CLOSE AND LOCK EXISTING EXTERIOR DOOR. PROVIDE FRAMING AND DRYWALL OVER INSIDE OPENING AS REQUIRED FOR BATHROOM WALL FINISH.
08	RELOCATE EXISTING ELECTRICAL PANELS CLOSER TO REAR WALL
09	RELOCATED ELECTRICAL PANEL
10	FINAL EQUIPMENT LAYOUTS PER EQUIPMENT VENDOR AND OWNER
11	MOP SINK
12	ON DEMAND HOT WATER HEATER
13	NEW INFILL STOREFRONT SYSTEM. INSTALL PER NOA'S. INFILL KNEE WALL BELOW STOREFRONT SYSTEM.

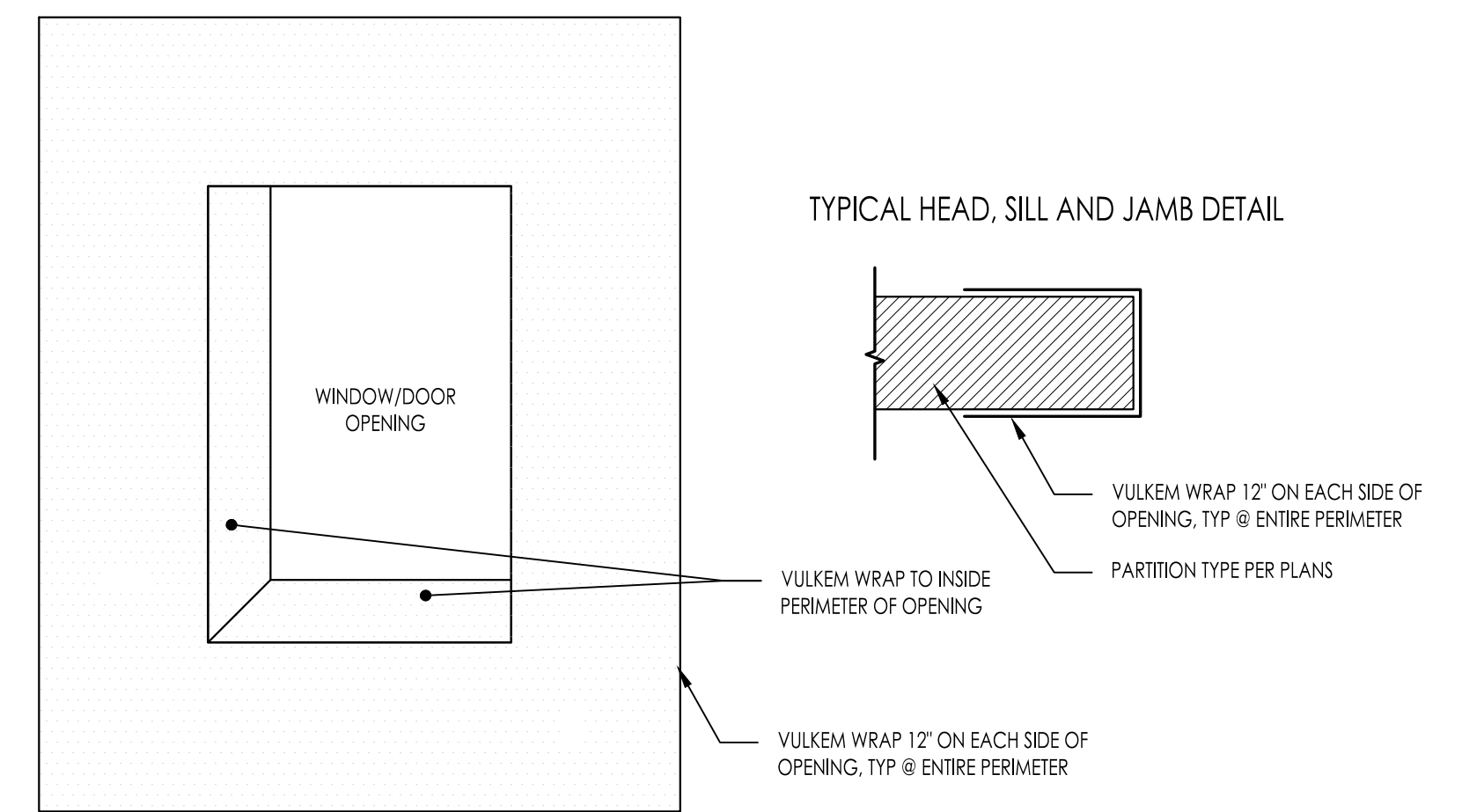
WALL TYPE LEGEND	
EXISTING PARTITION WALL U.N.O.	
EXISTING CMU WALL U.N.O.	
NEW WALL U.N.O. OR	
NEW WALL U.N.O. OR	

GENERAL NOTES	
1.	ALL WALLS TO BE PERPENDICULAR TO EACH OTHER UNLESS OTHERWISE NOTED ON DRAWINGS.
2.	ALL INTERIOR FRAMING TO USE METAL STUDS UNLESS OTHERWISE NOTED (U.N.O.) ON DRAWINGS.
3.	CONTRACTOR TO VERIFY ALL DIMENSIONS & REPORT ANY DISCREPANCIES TO THE ARCHITECT BEFORE CONSTRUCTION.
4.	ALL DIMENSIONS ARE MEASURED FROM STUD FACE TO STUD FACE (U.N.O.)
5.	ALIGN FACES OF ADJACENT FINISHED SURFACES. (U.N.O.)
6.	GENERAL CONTRACTOR TO COORDINATE ALL PENETRATIONS WITH FLOOR, WALL AND ROOF IN ARCHITECTURAL DRAWINGS. COORDINATION IS INCLUDED BUT NOT LIMITED TO: HVAC, PLUMBING, ELECTRICAL AND AUDIO/VISUAL.

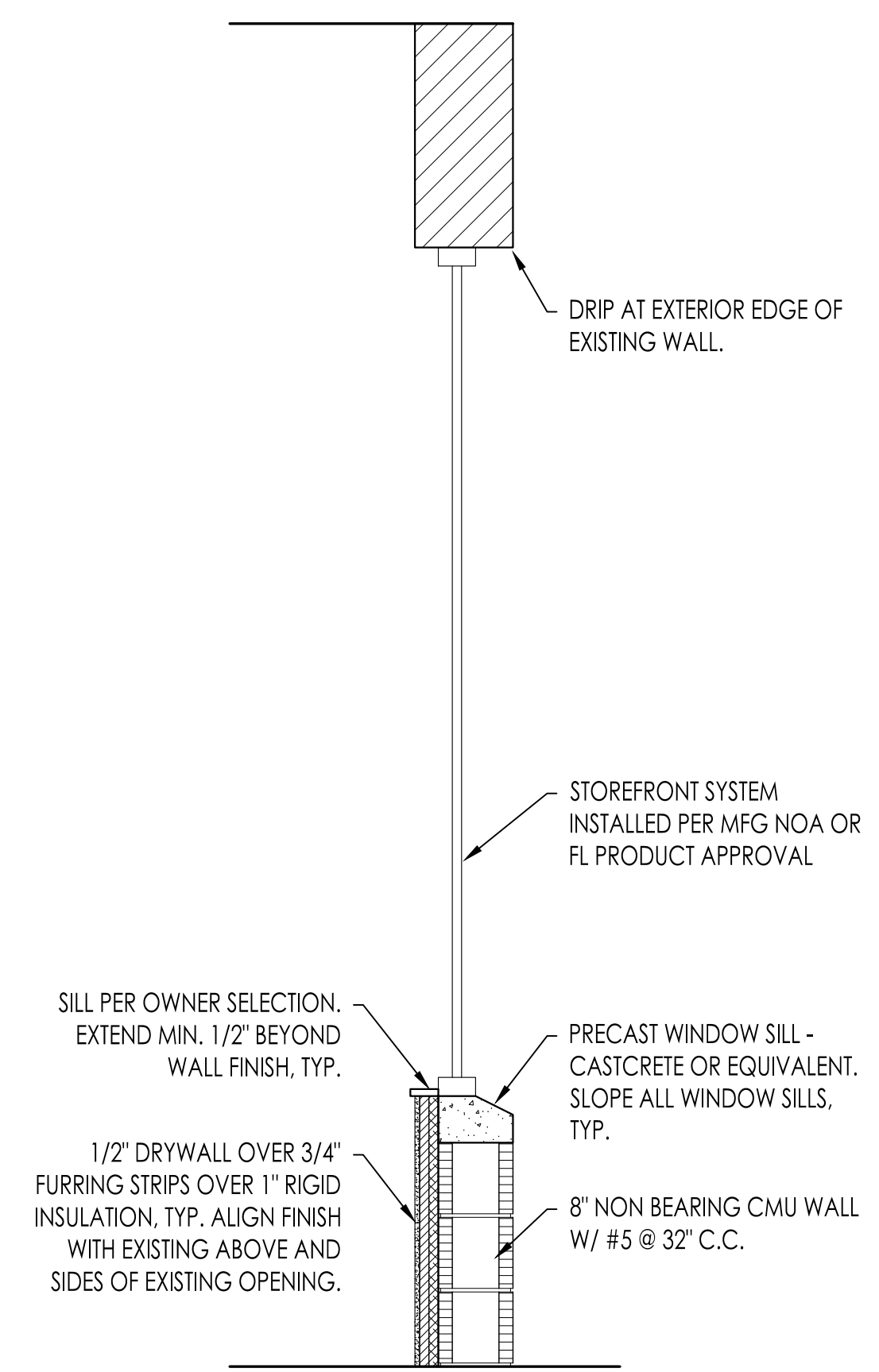
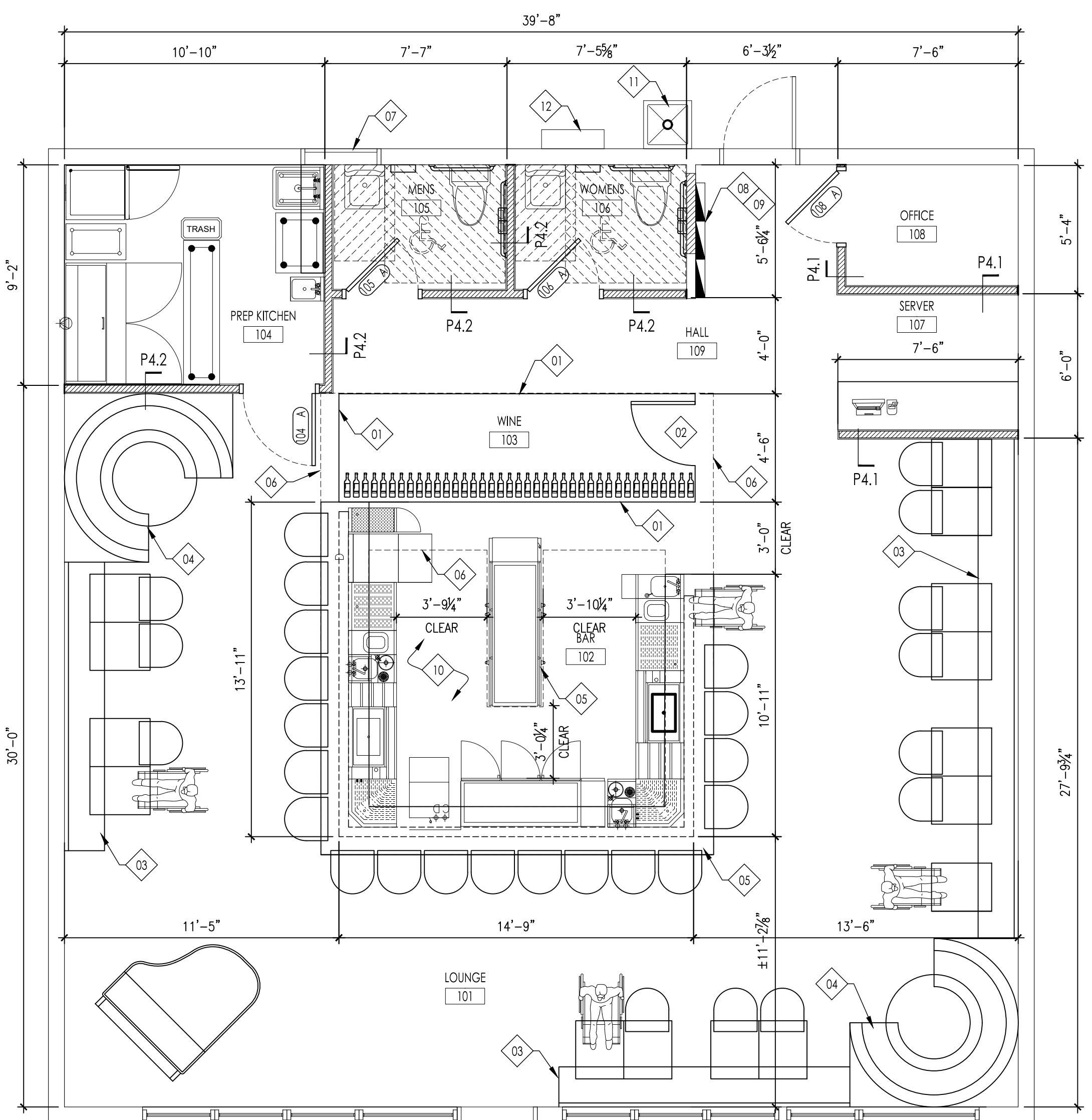
PARTITION AND WALL ASSEMBLIES	
CEILING AND HORIZONTAL SURFACES NOTES:	
1.	ALL HORIZONTAL INTERIOR GYPSUM BOARD SURFACES SHALL BE INSTALLED WITH MINIMUM 5/8" THICK GYPSUM BOARD.

PARTITION WALL NOTES:	
1.	WALL TYPE *1: DENOTES PRIMARY WALL TYPE.
2.	WALL TYPE *2: REPLACE GYP. BD. WITH THINSET, FINISH SMOOTH AND PAINT.
3.	WALL TYPE *3: ADD THINSET TILE OVER CEMENT BOARD.
4.	WALL TYPE *4: REPLACE 1/2" GYPSUM BOARD WITH 1/2" PLYWOOD AT STONE, HEAVY MATERIAL FINISH SIDE, GRAB BARS, SHELVING OR EXTERIOR SHEATHING.

WALL SYSTEM: P4.1	1/2" GYPSUM BOARD, PAINTED. SEE FINISH SCHEDULE (3-5/8") METAL STUDS AT 16" O.C. SOUND ATTENUATION BATTS BETWEEN STUDS. S.T.C. 43 MIN. 1/2" GYPSUM BOARD, PAINTED. SEE FINISH SCHEDULE
WALL SYSTEM: P4.2	SIMILAR TO P4.1. SUBSTITUTE 1/2" GYP. BD. w/ 1/2" CEMENT BOARD (WET SIDE), PAINTED
WALL SYSTEM: P4.3	SIMILAR TO P4.2. ADD THINSET TILE OVER 1/2" CEMENT BOARD (WET SIDE)
WALL SYSTEM: P4.4	SIMILAR TO P4.1. SUBSTITUTE GYP. BD. WITH 1/2" PLYWOOD AT STONE, HEAVY MATERIAL FINISH SIDE, GRAB BARS, SHELVING OR EXTERIOR SHEATHING.
WALL SYSTEM: P6.1	1/2" GYPSUM BOARD, PAINTED. SEE FINISH SCHEDULE (6") METAL STUDS AT 16" O.C. SOUND ATTENUATION BATTS BETWEEN STUDS. S.T.C. 43 MIN. 1/2" GYPSUM BOARD, PAINTED. SEE FINISH SCHEDULE
WALL SYSTEM: P6.2	SIMILAR TO P6.1. SUBSTITUTE 1/2" GYP. BD. w/ 1/2" CEMENT BOARD (WET SIDE), PAINTED
WALL SYSTEM: P6.3	SIMILAR TO P6.2. ADD THINSET TILE OVER 1/2" CEMENT BOARD (WET SIDE)
WALL SYSTEM: P6.4	SIMILAR TO P6.1. SUBSTITUTE GYP. BD. WITH 1/2" PLYWOOD AT STONE, HEAVY MATERIAL FINISH SIDE, GRAB BARS, SHELVING OR EXTERIOR SHEATHING.



C6
A5.2
TYPICAL OPENING WATERPROOFING DETAIL
SCALE: 1"=1'-0" (IF PLOTTED ON A 24" x 36" SHEET)



H6
A1.0
INFILL DETAIL
SCALE: 3/4"=1'-0" IF PLOTTED ON A 24" x 36" SHEET

H1
A1.0
PROPOSED PLAN
SCALE: 1/4"=1'-0" IF PLOTTED ON A 24" x 36" SHEET