



9 8 7 6 5 4 3  
**MATCHLINE C-500**  
**MATCHLINE C-501**

2 1  
**MATCHLINE C-500**  
**MATCHLINE C-501**

**90% CONSTRUCTION PLANS**



NO.	REV.	DATE	DESCRIPTION

ENGINEER OF RECORD:  
 JEFFREY R. TABAR - FL P.E. #54094

NOTICE: THE INFORMATION IN THIS DOCUMENT WAS PREPARED BY THE PROFESSIONAL ENGINEER, ARCHITECT, OR LANDSCAPE ARCHITECT SHOWN HEREIN TO ASSURE THE ACCURACY OF THE INFORMATION CONTAINED IN THIS DOCUMENT. THE PROFESSIONAL ENGINEER, ARCHITECT, OR LANDSCAPE ARCHITECT WILL NOT BE RESPONSIBLE FOR ANY CHANGES OR OMISSIONS THAT MAY OCCUR AFTER THE INFORMATION WAS PREPARED AND REVISIONS THEREAFTER. THIS DOCUMENT MUST BE COMPARED TO THE ORIGINAL HARD COPY TO INSURE THE ACCURACY OF THE INFORMATION CONTAINED HEREIN. NO ALTERATIONS HAVE BEEN MADE TO THIS DOCUMENT. NO RELIANCE SHOULD EVER BE MADE ON A DOCUMENT OR OTHER ELECTRONIC MEANS UNLESS IT IS FIRST COMPARED TO THE ORIGINAL HARD COPY. THE ACCURACY OF THE INFORMATION SHOWN HEREON IS GUARANTEED BY THE PROFESSIONAL ENGINEER, ARCHITECT, OR LANDSCAPE ARCHITECT WHOSE SIGNATURE AND SEAL ARE SHOWN ON THIS DOCUMENT OR OTHER ELECTRONIC MEANS.

CLIENT  
**CITY OF NAPLES**  
 735 8TH STREET SOUTH  
 NAPLES, FL 34102

PROJECT  
**EAST NAPLES BAY DREDGING**

TITLE  
**POTENTIAL HOMEOWNER DREDGE AREAS**

8601 PELICAN BAY BLVD  
 SUITE 200  
 NAPLES, FL 34109  
 TEL (239) 649-6560  
 WWW.STANTEC.COM

JOB NO.: 2028113191  
 DRAWN: KHN  
 DESIGN: MSS  
 CHECKED: JRT  
 APPROVED: MSS  
 SHEET NO. **C-500**

LEGEND:

DREDGE TEMPLATE

POTENTIAL HOMEOWNER DREDGE AREAS

User Name: rcbchambers  
 Drawing Name: \U:\60525\pfs601\workgroup\2028\active\177311281\Stantec\East Naples Bay - 2019\DWG\Construction Drawings\25-341C-500.dwg Jun 26, 2020 - 7:05am







MATCHLINE C-501  
MATCHLINE C-502

MATCHLINE C-501  
MATCHLINE C-502



REV	DATE	DESCRIPTION

ENGINEER OF RECORD:  
JEFFREY R. TABAR - FL P.E. #54094

NOTICE: THE INFORMATION IN THIS DOCUMENT WAS PREPARED BY THE ENGINEER OF RECORD OR HIS/HERS FOR THE PROJECT AND TO ASSURE THE ACCURACY OF THE INFORMATION CONTAINED IN THIS DOCUMENT, THE ENGINEER OF RECORD HAS CONDUCTED VISUAL INSPECTIONS OF THE PROJECT AND HAS REVIEWED THE INFORMATION PROVIDED TO HIM/HER BY THE CLIENT. THE ENGINEER OF RECORD HAS NOT CONDUCTED ANY OTHER INVESTIGATION OR TESTING AND HAS NOT OBTAINED ANY OTHER INFORMATION FROM ANY SOURCE OTHER THAN AS STATED. THE ENGINEER OF RECORD MAKES NO WARRANTY, REPRESENTATION OR GUARANTEE, EXPRESS OR IMPLIED, AS TO THE ACCURACY, COMPLETENESS, OR SUITABILITY OF THE INFORMATION CONTAINED IN THIS DOCUMENT FOR ANY PURPOSE OTHER THAN THAT FOR WHICH IT WAS PREPARED. THE USER OF THIS DOCUMENT MUST BE AWARE THAT THE INFORMATION CONTAINED IN THIS DOCUMENT IS NOT TO BE USED FOR ANY OTHER PURPOSE AND THAT THE ENGINEER OF RECORD IS NOT RESPONSIBLE FOR ANY CONSEQUENCES OF SUCH USE. THE USER OF THIS DOCUMENT MUST BE AWARE THAT THE INFORMATION CONTAINED IN THIS DOCUMENT IS NOT TO BE USED FOR ANY OTHER PURPOSE AND THAT THE ENGINEER OF RECORD IS NOT RESPONSIBLE FOR ANY CONSEQUENCES OF SUCH USE.

CLIENT: CITY OF NAPLES  
735 8TH STREET SOUTH  
NAPLES, FL 34102

PROJECT: EAST NAPLES BAY DREDGING

TITLE: POTENTIAL HOMEOWNER DREDGE AREAS

Stantec

9601 PELICAN BAY BLVD  
SUITE 200  
NAPLES, FL 34108  
TEL (239) 464-4540

WWW.STANTEC.COM

JOB NO.: 2028113191

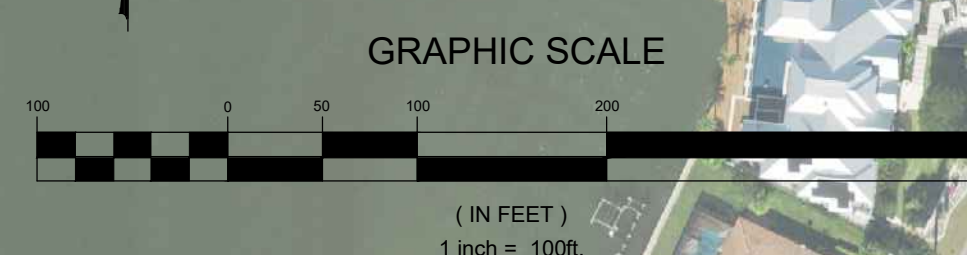
DRAWN: KHN

DESIGN: MSS

CHECKED: JRT

APPROVED: MSS

SHEET NO. C-502



LEGEND:

DREDGE TEMPLATE	
POTENTIAL HOMEOWNER DREDGE AREAS	

MATCHLINE C-502  
MATCHLINE C-503

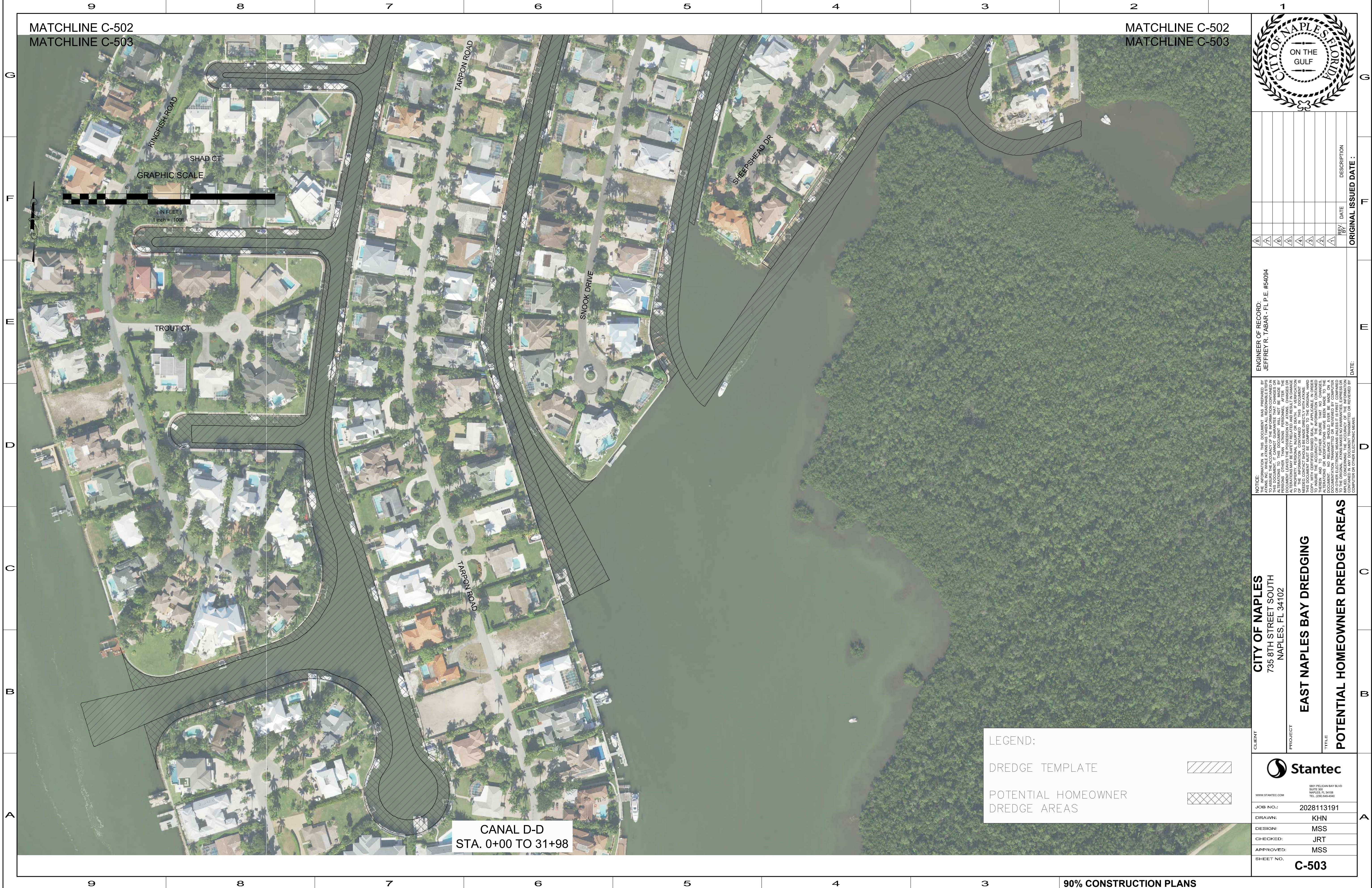
MATCHLINE C-502  
MATCHLINE C-503

90% CONSTRUCTION PLANS

User Name: cchambers  
Drawing Name: \U005255-pj65a01\workgroup\2028\active\177311281\Stantec\East Naples Bay - 2019\DWG\Construction Drawings\25x34C-500.dwg Jun 26, 2020 - 7:06am



User Name: rchambers  
 Drawing Name: \\u00525-pf6801\workgroup\2028\active\17311281\Stantec\East Naples Bay - 2019\DWG\Construction Drawings 25-34C-500.dwg Jun 26, 2020 - 7:08am



MATCHLINE C-502  
 MATCHLINE C-503

MATCHLINE C-502  
 MATCHLINE C-503



REV	BY	DATE	DESCRIPTION

ENGINEER OF RECORD:  
 JEFFREY R. TABAR - FL P.E. #54094

DATE: \_\_\_\_\_

NOTICE: THE INFORMATION IN THIS DOCUMENT WAS PREPARED BY THE ENGINEER OF RECORD OR HIS EMPLOYEES AND IS INTENDED TO ASSIST IN THE DESIGN AND CONSTRUCTION OF THE PROJECT. IT IS NOT TO BE USED FOR ANY OTHER PURPOSES WITHOUT THE WRITTEN CONSENT OF THE ENGINEER OF RECORD. THE ENGINEER OF RECORD DOES NOT WARRANT THE ACCURACY OF THE INFORMATION CONTAINED IN THIS DOCUMENT AND IS NOT RESPONSIBLE FOR ANY ERRORS, OMISSIONS, OR ALTERATIONS. THE USER OF THIS DOCUMENT SHALL BE RESPONSIBLE FOR VERIFYING THE ACCURACY OF THE INFORMATION CONTAINED IN THIS DOCUMENT AND FOR OBTAINING ALL NECESSARY PERMITS AND APPROVALS FROM THE APPROPRIATE AGENCIES. THE ENGINEER OF RECORD SHALL NOT BE HELD RESPONSIBLE FOR ANY DAMAGES, INCLUDING CONSEQUENTIAL DAMAGES, ARISING FROM THE USE OF THIS DOCUMENT.

CLIENT  
**CITY OF NAPLES**  
 735 8TH STREET SOUTH  
 NAPLES, FL 34102

PROJECT  
**EAST NAPLES BAY DREDGING**

TITLE  
**POTENTIAL HOMEOWNER DREDGE AREAS**

8601 PELICAN BAY BLVD  
 SUITE 200, NAPLES, FL 34109  
 TEL (239) 469-4500

WWW.STANTEC.COM

JOB NO.: 2028113191

DRAWN: KHN

DESIGN: MSS

CHECKED: JRT

APPROVED: MSS

SHEET NO. **C-503**

LEGEND:

DREDGE TEMPLATE

POTENTIAL HOMEOWNER DREDGE AREAS

**CANAL D-D**  
**STA. 0+00 TO 31+98**







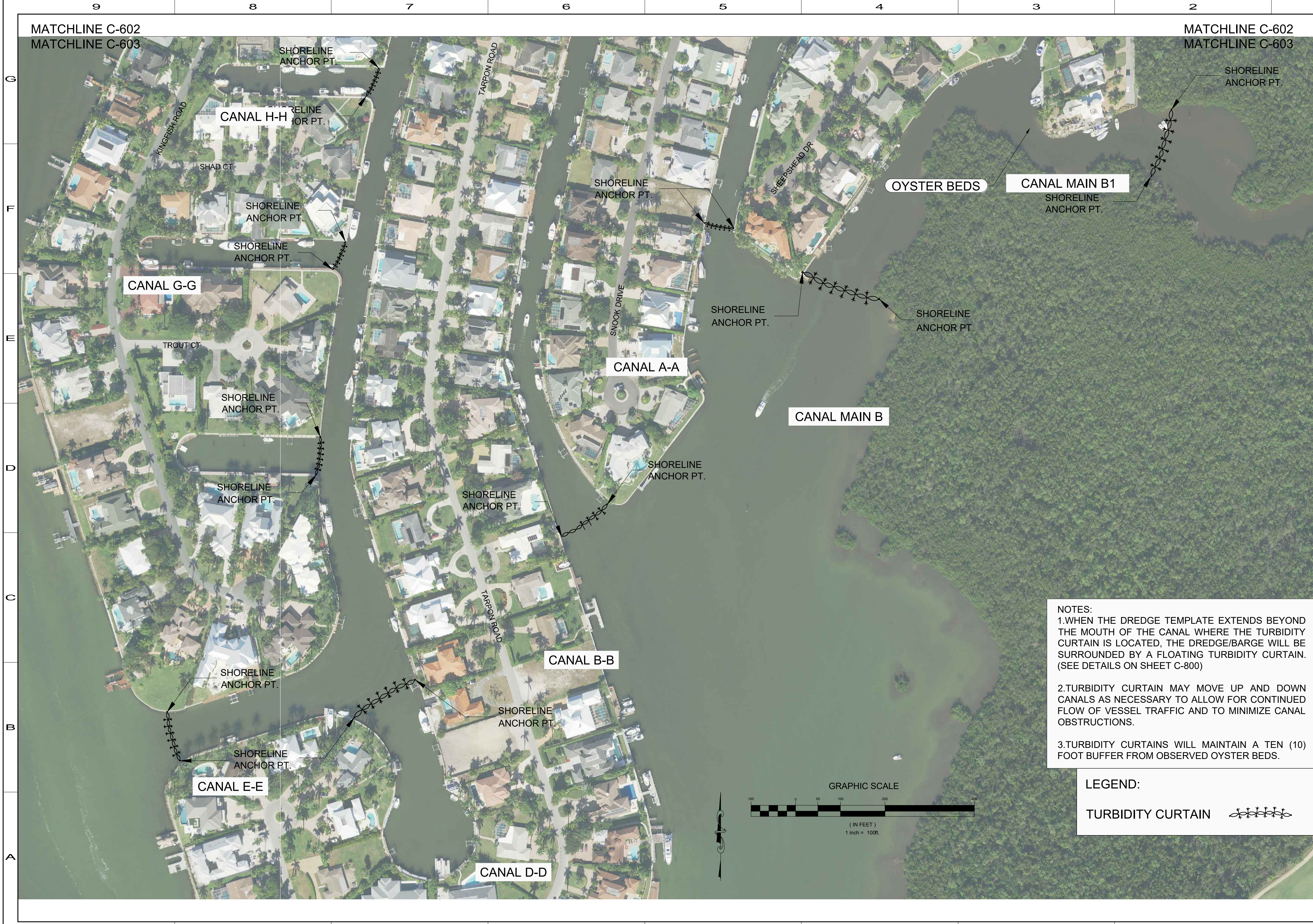








User Name: rchambers  
 Drawing Name: \\u00525-pf601\workgroup\2028active\17311281\Stantec\East Naples Bay - 2019\DWG\Construction Drawings\25-34-C-603.dwg Jun 26, 2020 - 7:30am



**NOTES:**  
 1. WHEN THE DREDGE TEMPLATE EXTENDS BEYOND THE MOUTH OF THE CANAL WHERE THE TURBIDITY CURTAIN IS LOCATED, THE DREDGE/BARGE WILL BE SURROUNDED BY A FLOATING TURBIDITY CURTAIN. (SEE DETAILS ON SHEET C-800)  
 2. TURBIDITY CURTAIN MAY MOVE UP AND DOWN CANALS AS NECESSARY TO ALLOW FOR CONTINUED FLOW OF VESSEL TRAFFIC AND TO MINIMIZE CANAL OBSTRUCTIONS.  
 3. TURBIDITY CURTAINS WILL MAINTAIN A TEN (10) FOOT BUFFER FROM OBSERVED OYSTER BEDS.

**LEGEND:**  
 TURBIDITY CURTAIN



REV	DATE	DESCRIPTION

ENGINEER OF RECORD:  
 JEFFREY R. TABAR - FL P.E. #54094  
 DATE:

NOTICE: THE INFORMATION IN THIS DOCUMENT WAS PREPARED BY STANTEC INC. OR ITS CONSULTANTS AND IS INTENDED TO ASSIST IN THE DESIGN AND CONSTRUCTION OF THE PROJECT DESCRIBED HEREIN. STANTEC INC. AND ITS CONSULTANTS MAKE NO WARRANTY, EXPRESS OR IMPLIED, AS TO THE ACCURACY, COMPLETENESS, OR SUITABILITY OF THE INFORMATION CONTAINED IN THIS DOCUMENT FOR ANY PURPOSE OTHER THAN THAT AUTHORIZED BY STANTEC INC. OR ITS CONSULTANTS. ANY ALTERATIONS TO THIS DOCUMENT WILL NOT BE MADE BY STANTEC INC. OR ITS CONSULTANTS UNLESS THEY ARE MADE BY STANTEC INC. OR ITS CONSULTANTS. STANTEC INC. AND ITS CONSULTANTS SHALL NOT BE RESPONSIBLE FOR ANY DAMAGE, LOSS, OR LIABILITY ARISING FROM THE USE OF THIS DOCUMENT FOR ANY PURPOSE OTHER THAN THAT AUTHORIZED BY STANTEC INC. OR ITS CONSULTANTS. THIS DOCUMENT MUST BE COMPARED TO THE ORIGINAL HARD COPY OF THE INFORMATION CONTAINED HEREIN TO ENSURE THE ACCURACY OF THE INFORMATION CONTAINED HEREIN. NO ALTERATIONS HAVE BEEN MADE TO THIS DOCUMENT. NO RELIANCE SHOULD EVER BE MADE ON A COPY OF THIS DOCUMENT THAT IS NOT THE ORIGINAL HARD COPY OR OTHER ELECTRONIC MEANS UNLESS IT IS FIRST COMPARED TO THE ORIGINAL HARD COPY OF THE INFORMATION CONTAINED HEREIN. CONCERNING THE ACCURACY OF THE INFORMATION CONTAINED HEREIN, THE USER OF THIS DOCUMENT IS ADVISED TO CONSULT STANTEC INC. OR ITS CONSULTANTS FOR FURTHER INFORMATION.

**CITY OF NAPLES**  
 735 8TH STREET SOUTH  
 NAPLES, FL 34102

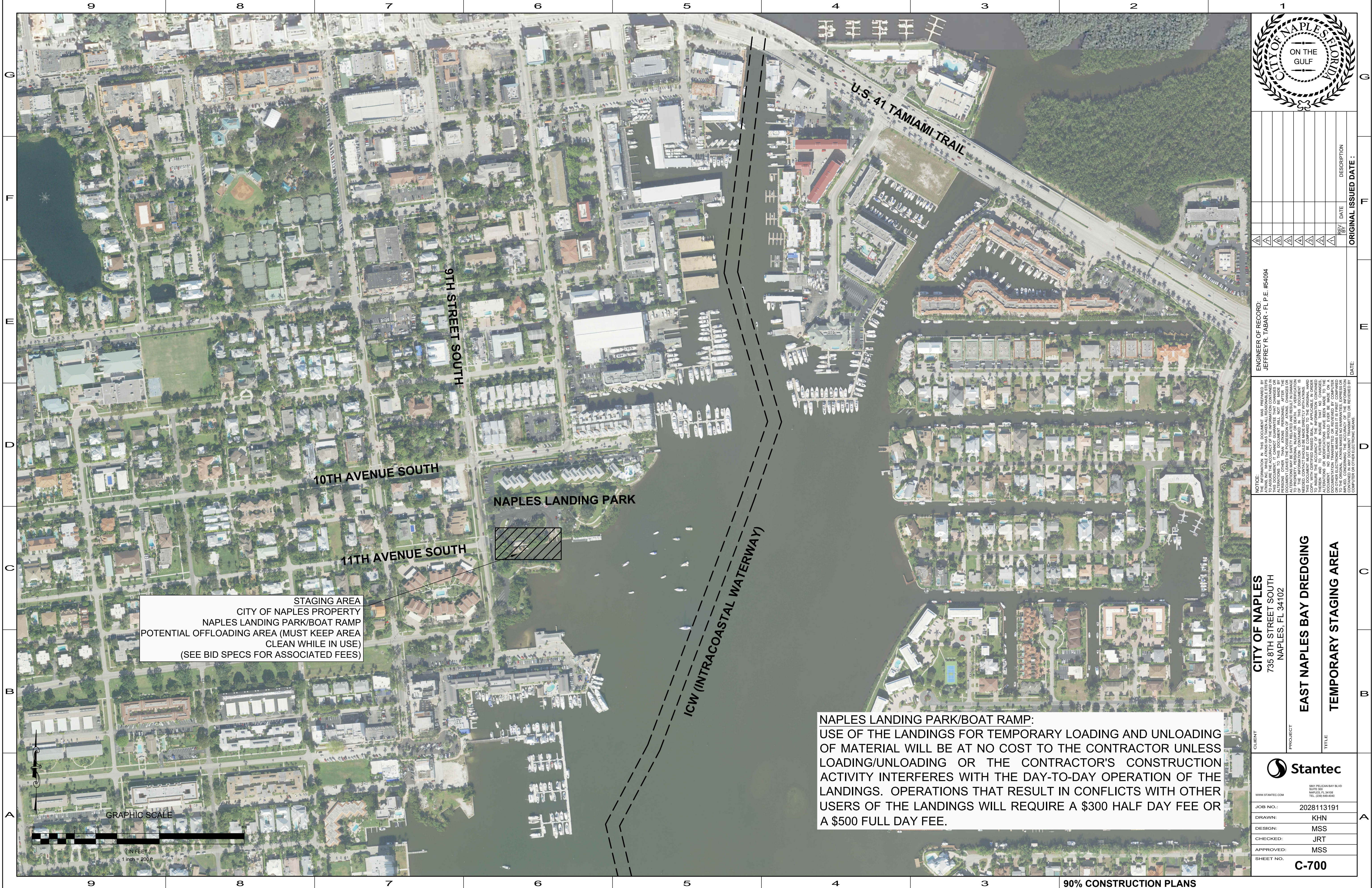
**EAST NAPLES BAY DREDGING**

**TURBIDITY CURTAIN DETAILS**

<small>8601 PELICAN BAY BLVD        SUITE 200        NAPLES, FL 34109        TEL (239) 649-4540        WWW.STANTEC.COM</small>	
JOB NO.:	2028113191
DRAWN:	KHN
DESIGN:	MSS
CHECKED:	JRT
APPROVED:	MSS
SHEET NO.:	<b>C-603</b>



User Name: rchambers  
 Drawing Name: \US0525-rpfs01\workgroup\2028\active\17311281\Sanitec\East Naples Bay - 2019\DWG\Construction Drawings 25-34-C-700.dwg Jun 26, 2020 - 7:35am



STAGING AREA  
 CITY OF NAPLES PROPERTY  
 NAPLES LANDING PARK/BOAT RAMP  
 POTENTIAL OFFLOADING AREA (MUST KEEP AREA  
 CLEAN WHILE IN USE)  
 (SEE BID SPECS FOR ASSOCIATED FEES)

**NAPLES LANDING PARK/BOAT RAMP:**  
 USE OF THE LANDINGS FOR TEMPORARY LOADING AND UNLOADING OF MATERIAL WILL BE AT NO COST TO THE CONTRACTOR UNLESS LOADING/UNLOADING OR THE CONTRACTOR'S CONSTRUCTION ACTIVITY INTERFERES WITH THE DAY-TO-DAY OPERATION OF THE LANDINGS. OPERATIONS THAT RESULT IN CONFLICTS WITH OTHER USERS OF THE LANDINGS WILL REQUIRE A \$300 HALF DAY FEE OR A \$500 FULL DAY FEE.



REV	DATE	DESCRIPTION

ENGINEER OF RECORD:  
 JEFFREY R. TABAR - FL P.E. #54094

DATE: \_\_\_\_\_  
 ORIGINAL ISSUED DATE: \_\_\_\_\_

NOTICE: THE INFORMATION IN THIS DOCUMENT WAS PREPARED BY THE ENGINEER OF RECORD AND IS NOT TO BE USED FOR ANY OTHER PURPOSES WITHOUT THE WRITTEN CONSENT OF THE ENGINEER OF RECORD. THE ENGINEER OF RECORD HAS NOT CONDUCTED A VISUAL INSPECTION OF THE PROJECT SITE AND HAS NOT BEEN ADVISED OF ANY CHANGES TO THE PROJECT SINCE THE DATE OF THE LAST VISIT. THE ENGINEER OF RECORD HAS NOT CONDUCTED A VISUAL INSPECTION OF THE PROJECT SITE AND HAS NOT BEEN ADVISED OF ANY CHANGES TO THE PROJECT SINCE THE DATE OF THE LAST VISIT. THE ENGINEER OF RECORD HAS NOT CONDUCTED A VISUAL INSPECTION OF THE PROJECT SITE AND HAS NOT BEEN ADVISED OF ANY CHANGES TO THE PROJECT SINCE THE DATE OF THE LAST VISIT.

CLIENT: CITY OF NAPLES  
 735 8TH STREET SOUTH  
 NAPLES, FL 34102

PROJECT: EAST NAPLES BAY DREDGING

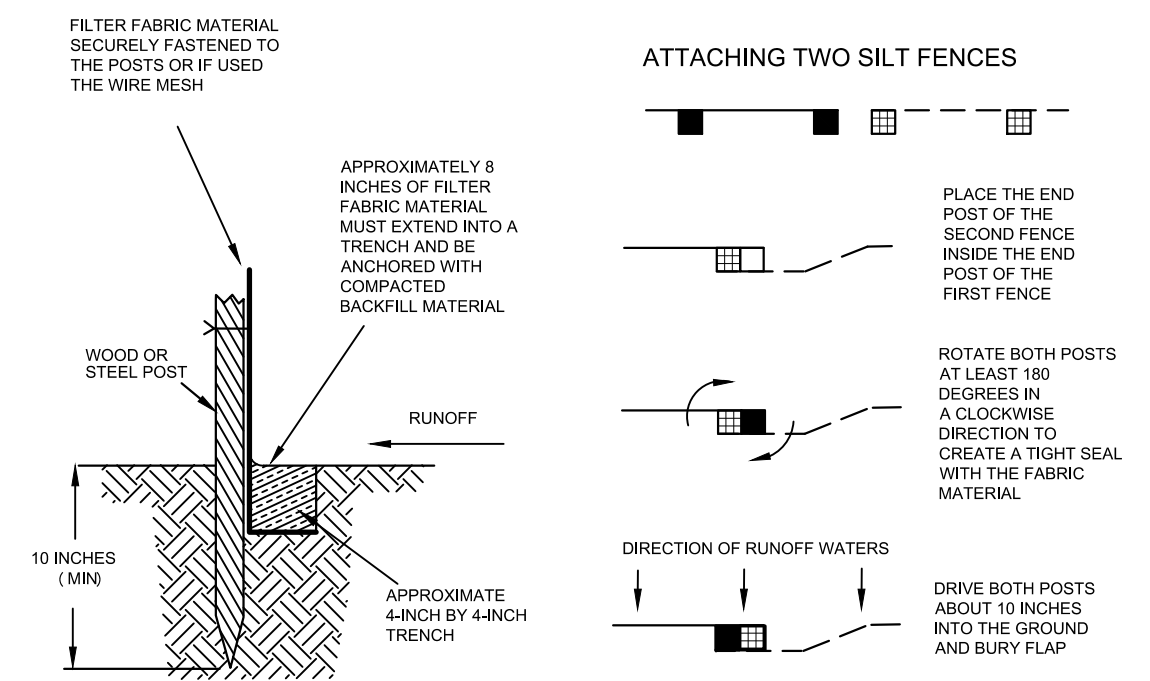
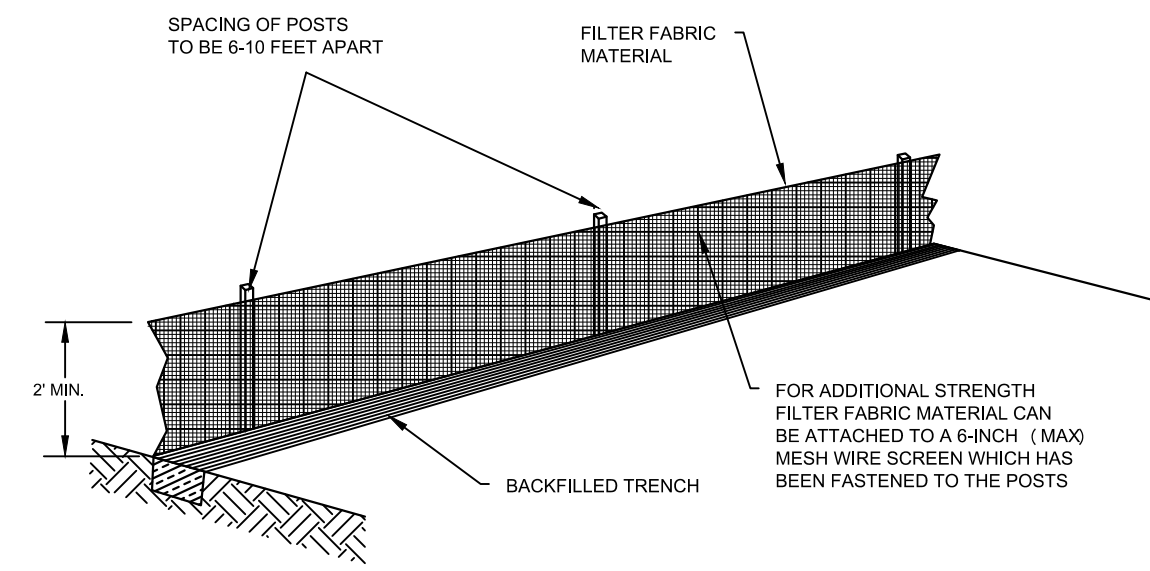
TITLE: TEMPORARY STAGING AREA

**Stantec**  
 901 PELICAN BAY BLVD  
 SUITE 200  
 NAPLES, FL 34102  
 TEL (239) 448-4440

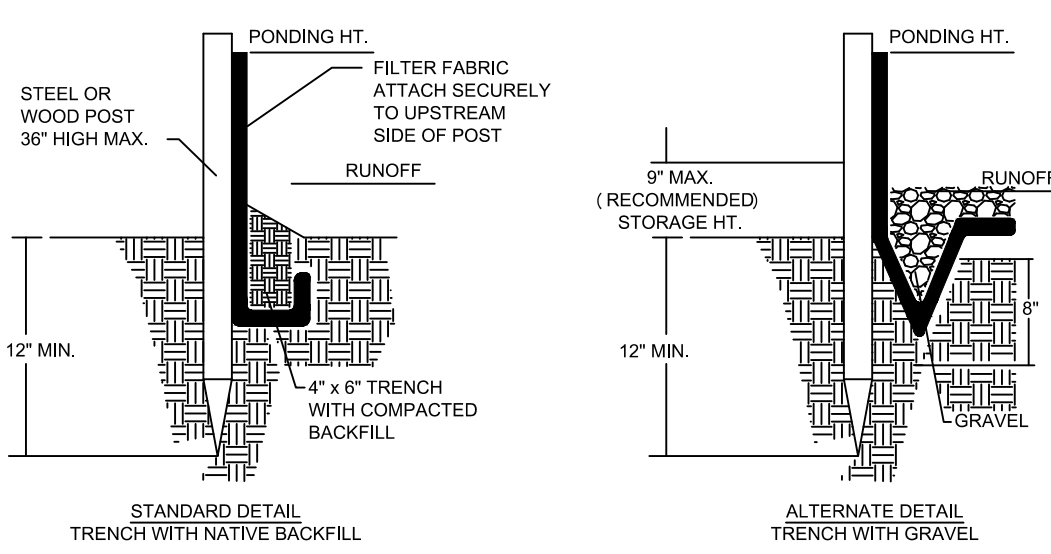
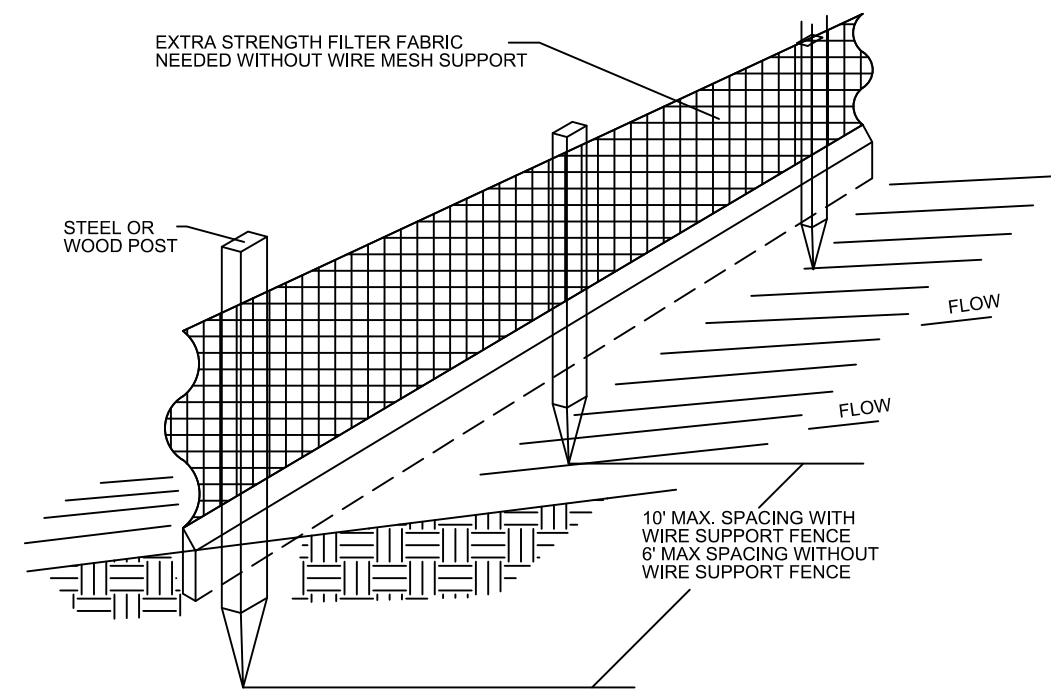
WWW.STANTEC.COM

JOB NO.: 2028113191  
 DRAWN: KHN  
 DESIGN: MSS  
 CHECKED: JRT  
 APPROVED: MSS  
 SHEET NO. **C-700**



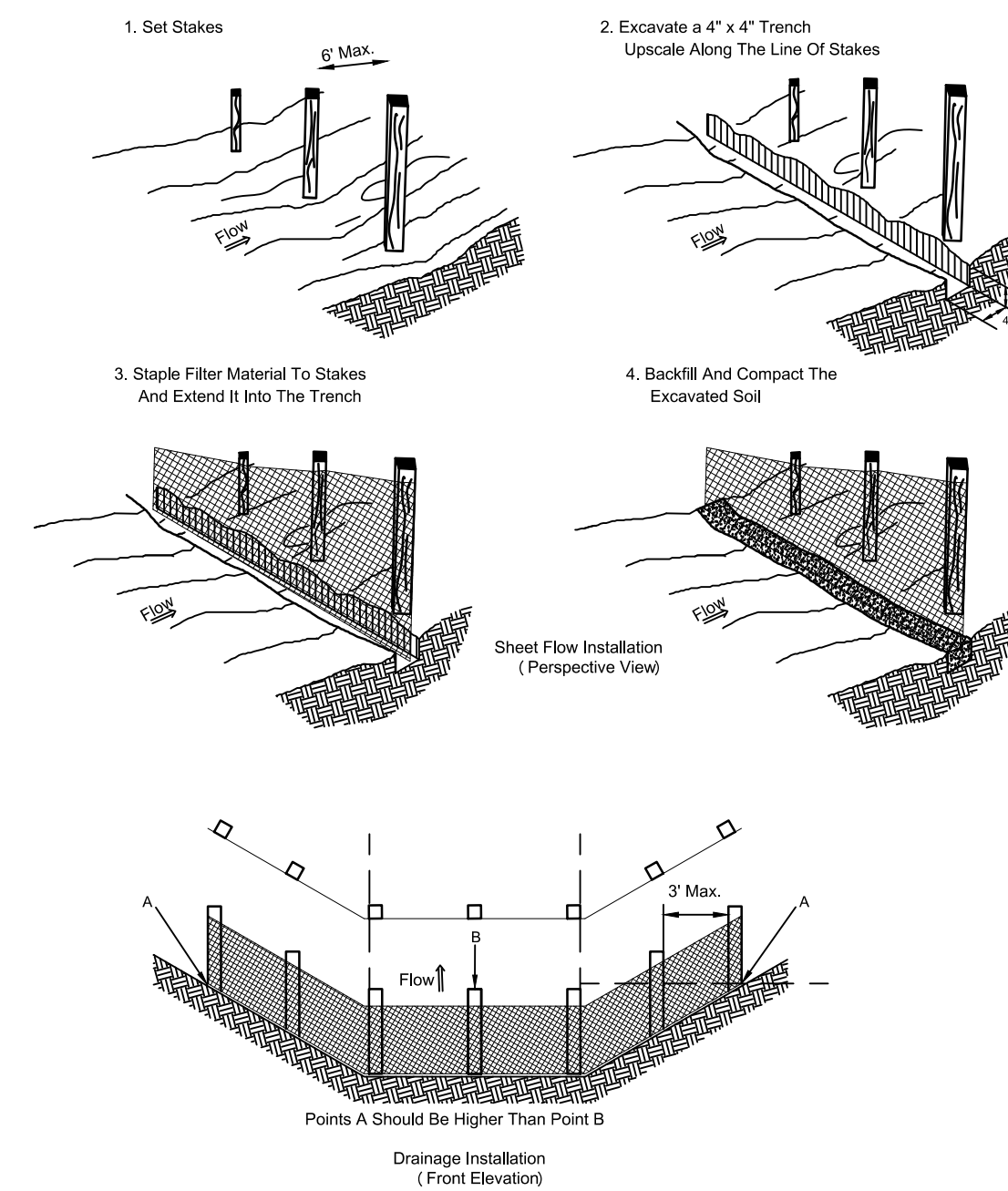


**INSTALLING A FILTER FABRIC SILT FENCE**

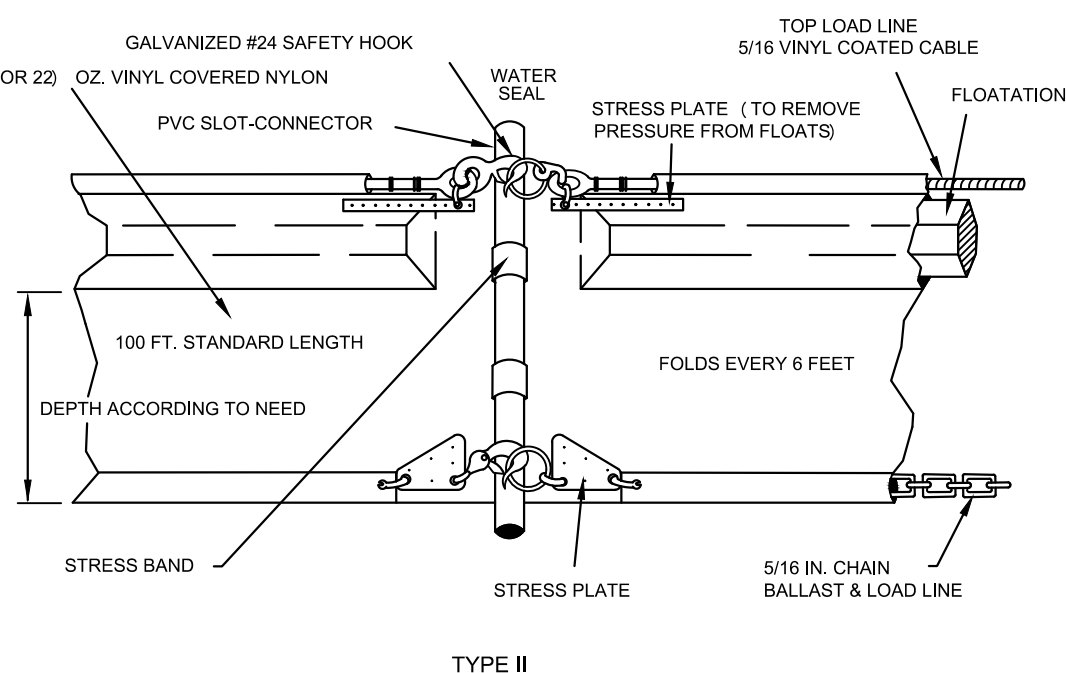
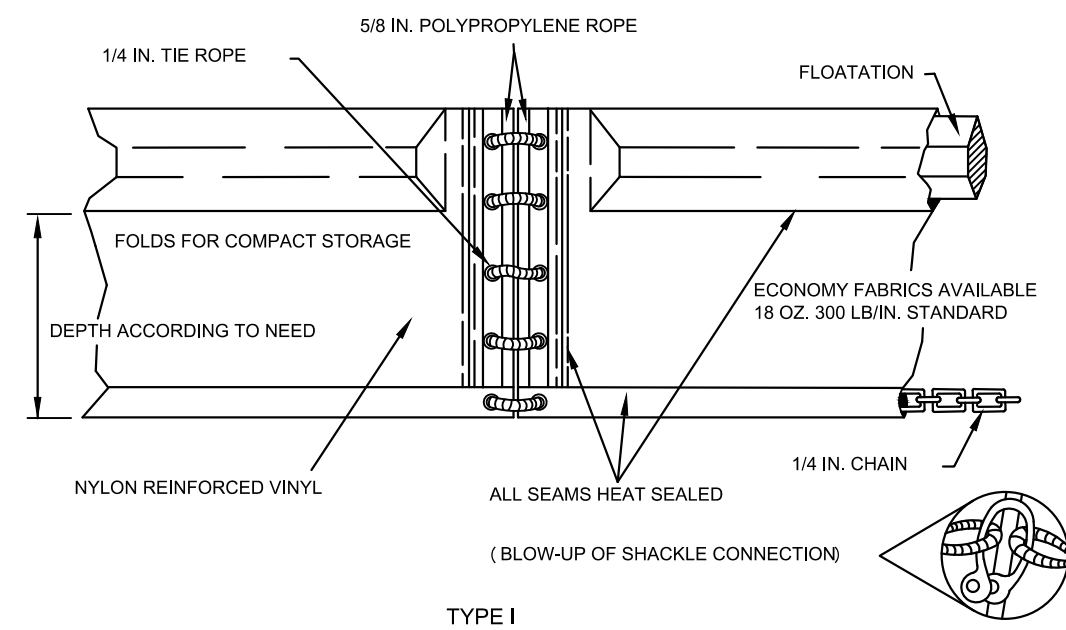


- NOTES:**
1. INSPECT AND REPAIR FENCE AFTER EACH STORM EVENT AND REMOVE SEDIMENT WHEN NECESSARY.
  2. REMOVED SEDIMENT SHALL BE DEPOSITED TO AN AREA THAT WILL NOT CONTRIBUTE SEDIMENT OFF-SITE AND CAN BE PERMANENTLY STABILIZED.
  3. SILT FENCE SHALL BE PLACED ON SLOPE CONTOURS TO MAXIMIZE PONDING EFFICIENCY.

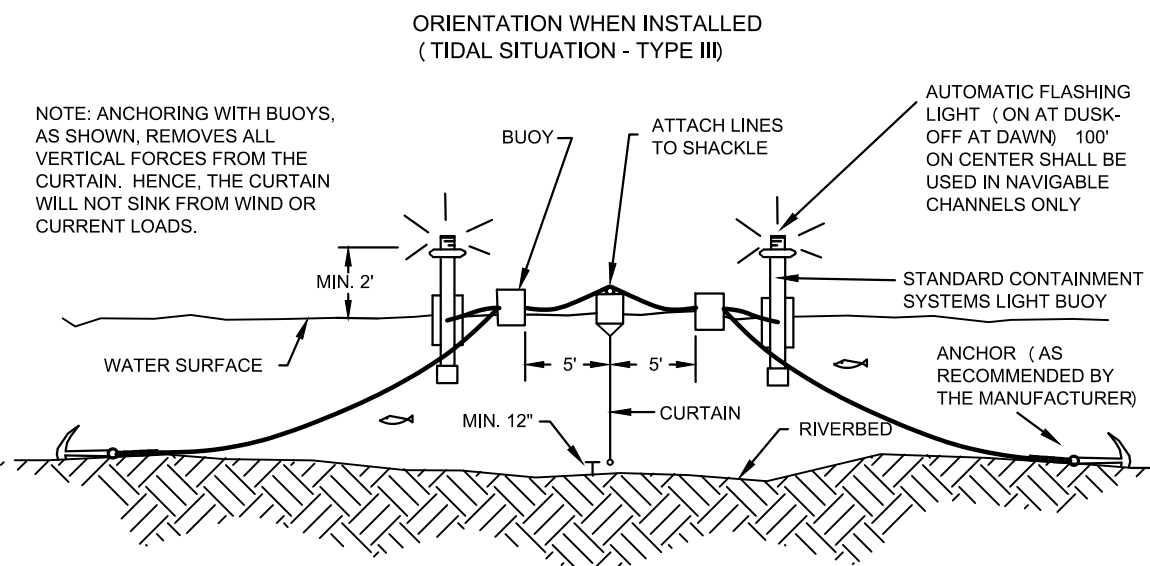
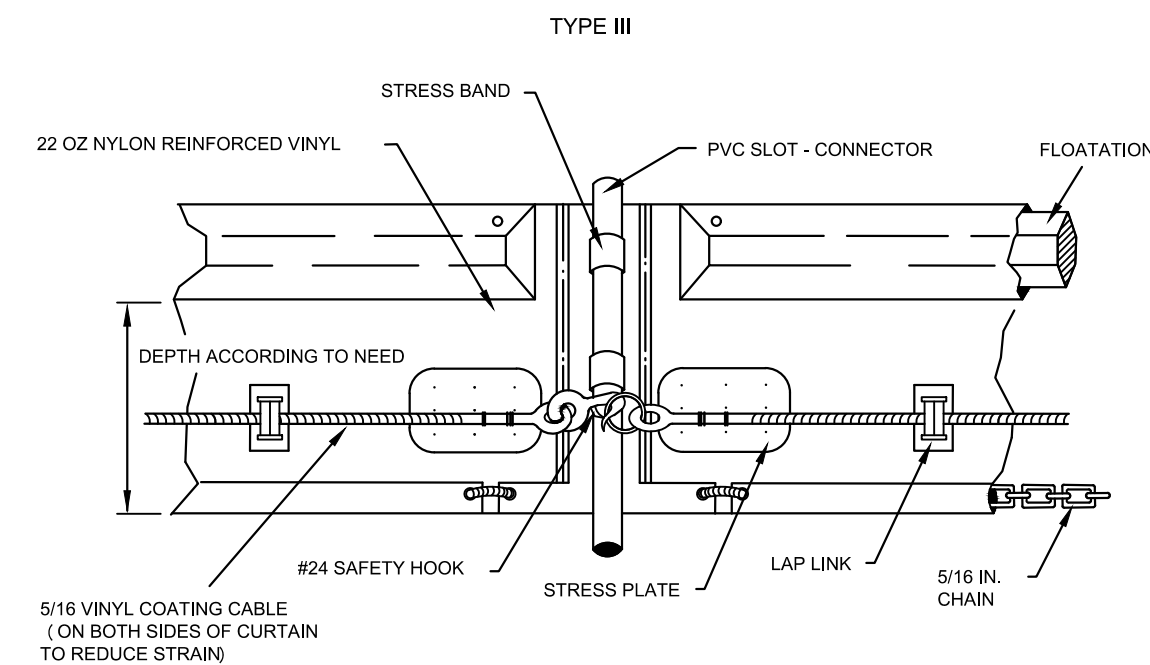
**INSTALLING A FILTER FABRIC SILT FENCE**



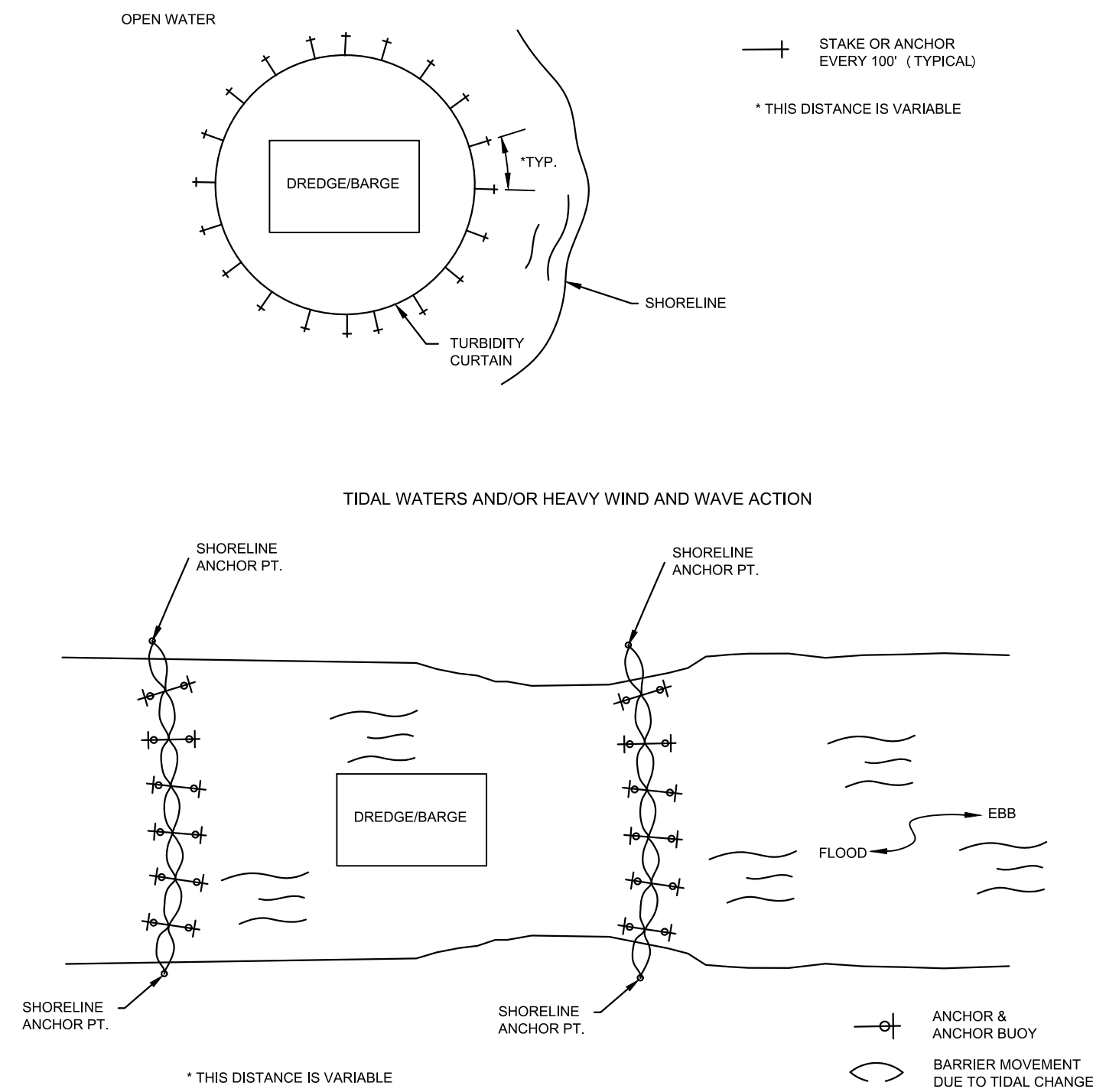
**INSTALLING A FILTER FABRIC SILT FENCE**



**FLOATING TURBIDITY BARRIER TYPE (S) I & II**



**FLOATING TURBIDITY BARRIER TYPE III**



**TYPICAL INSTALLATION LAYOUT OF FLOATING TURBIDITY BARRIERS**



REV	DATE	DESCRIPTION

ENGINEER OF RECORD:  
JEFFREY R. TABAR - FL P.E. #54094

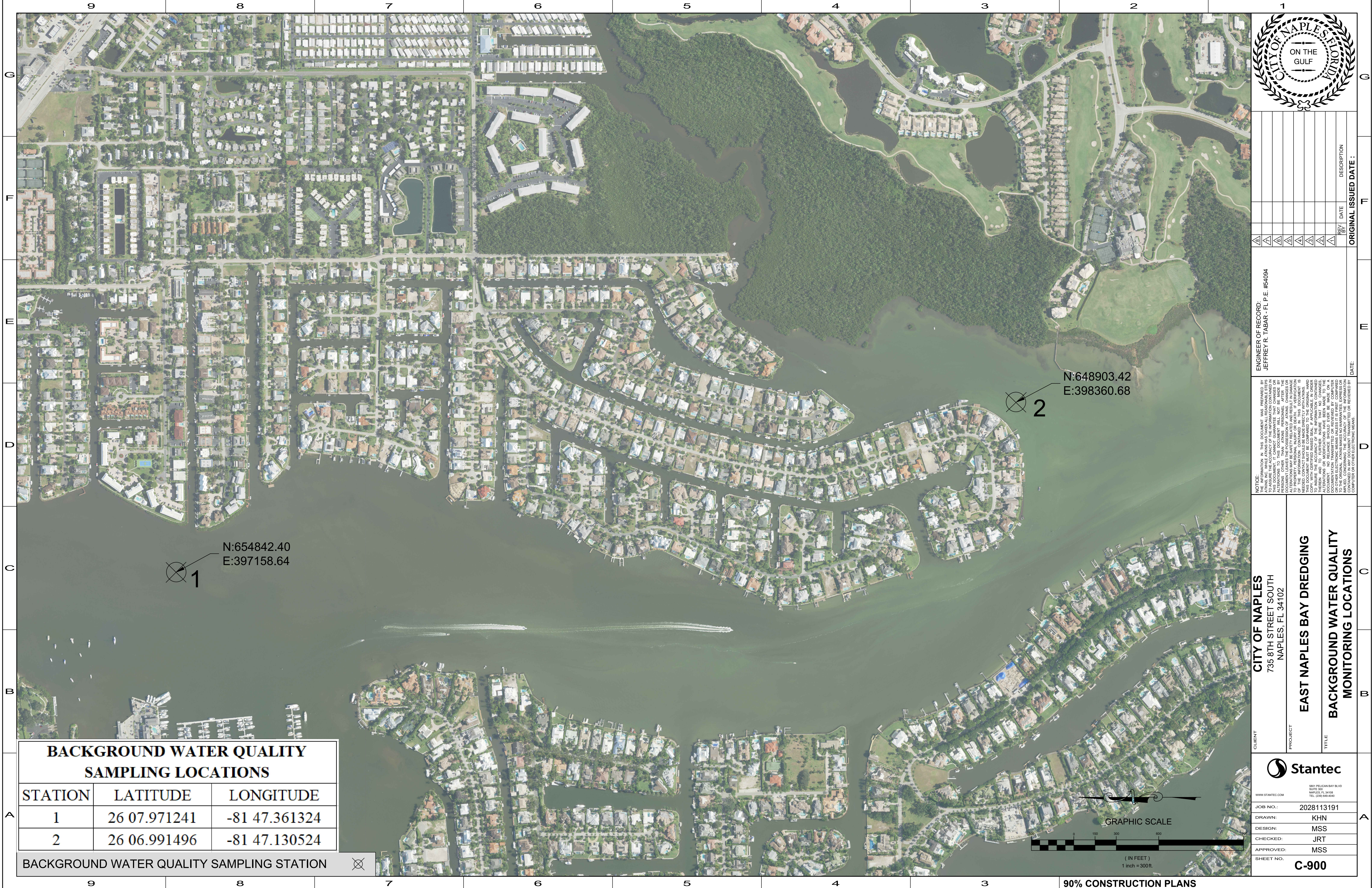
DATE: \_\_\_\_\_

NOTICE: THE INFORMATION IN THIS DOCUMENT WAS PREPARED BY THE CONSULTANT FOR THE CLIENT AND IS INTENDED TO BE USED FOR THE PROJECT AND SITE SPECIFICALLY IDENTIFIED HEREIN. THE CONSULTANT DOES NOT WARRANT, REPRESENT, OR GUARANTEE THE ACCURACY, COMPLETENESS, OR QUALITY OF THE INFORMATION CONTAINED HEREIN. THE CONSULTANT SHALL NOT BE RESPONSIBLE FOR ANY ERRORS OR OMISSIONS IN THIS DOCUMENT OR FOR ANY DAMAGE TO PERSONS OR PROPERTY CAUSED BY THE USE OF THE INFORMATION CONTAINED HEREIN. THE CONSULTANT SHALL NOT BE RESPONSIBLE FOR ANY DAMAGE TO PERSONS OR PROPERTY CAUSED BY THE USE OF THE INFORMATION CONTAINED HEREIN. THE CONSULTANT SHALL NOT BE RESPONSIBLE FOR ANY DAMAGE TO PERSONS OR PROPERTY CAUSED BY THE USE OF THE INFORMATION CONTAINED HEREIN. NO LIABILITY SHALL EVER BE MADE ON A CONSULTANT FOR ANY DAMAGE TO PERSONS OR PROPERTY CAUSED BY THE USE OF THE INFORMATION CONTAINED HEREIN. THE CONSULTANT SHALL NOT BE RESPONSIBLE FOR ANY DAMAGE TO PERSONS OR PROPERTY CAUSED BY THE USE OF THE INFORMATION CONTAINED HEREIN. THE CONSULTANT SHALL NOT BE RESPONSIBLE FOR ANY DAMAGE TO PERSONS OR PROPERTY CAUSED BY THE USE OF THE INFORMATION CONTAINED HEREIN.

CLIENT	CITY OF NAPLES 735 8TH STREET SOUTH NAPLES, FL 34102
PROJECT	EAST NAPLES BAY DREDGING
TITLE	EROSION CONTROL DETAILS

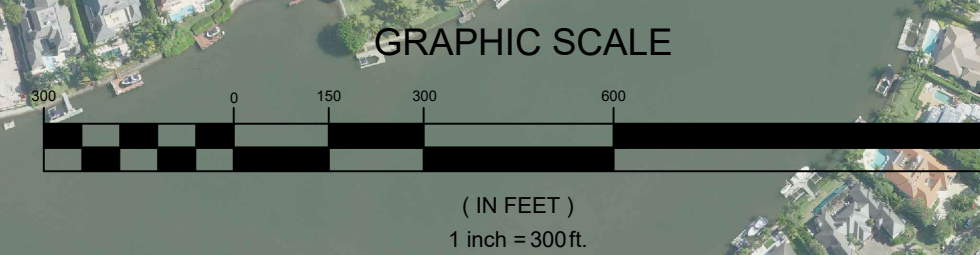
<small>5901 PELICAN BAY BLVD SUITE 100 DADE CITY, FL 34648 TEL (352) 648-4540 WWW.STANTEC.COM</small>	
JOB NO.:	2028113191
DRAWN:	KHN
DESIGN:	MSS
CHECKED:	JRT
APPROVED:	MSS
SHEET NO.	<b>C-800</b>





BACKGROUND WATER QUALITY SAMPLING LOCATIONS		
STATION	LATITUDE	LONGITUDE
1	26 07.971241	-81 47.361324
2	26 06.991496	-81 47.130524

BACKGROUND WATER QUALITY SAMPLING STATION



REV	DATE	DESCRIPTION

ENGINEER OF RECORD:  
 JEFFREY R. TABAR - FL P.E. #54094

DATE: ORIGINAL ISSUED DATE:

NOTICE: THE INFORMATION IN THIS DOCUMENT WAS PREPARED BY STANTEC CONSULTANTS INC. AND IS FOR THE USE OF THE CLIENT ONLY. STANTEC CONSULTANTS INC. DOES NOT WARRANT THE ACCURACY OF THE INFORMATION CONTAINED IN THIS DOCUMENT. THE CLIENT SHALL BE RESPONSIBLE FOR VERIFYING THE ACCURACY OF THE INFORMATION CONTAINED IN THIS DOCUMENT. STANTEC CONSULTANTS INC. SHALL NOT BE RESPONSIBLE FOR ANY DAMAGE OR INJURY TO PERSONS OR PROPERTY ARISING FROM THE USE OF THIS DOCUMENT. THE CLIENT SHALL BE RESPONSIBLE FOR OBTAINING ALL NECESSARY PERMITS AND APPROVALS FROM THE APPROPRIATE AGENCIES. NO LIABILITY SHALL BE ASSUMED BY STANTEC CONSULTANTS INC. FOR ANY DAMAGE OR INJURY TO PERSONS OR PROPERTY ARISING FROM THE USE OF THIS DOCUMENT. THE CLIENT SHALL BE RESPONSIBLE FOR OBTAINING ALL NECESSARY PERMITS AND APPROVALS FROM THE APPROPRIATE AGENCIES. NO LIABILITY SHALL BE ASSUMED BY STANTEC CONSULTANTS INC. FOR ANY DAMAGE OR INJURY TO PERSONS OR PROPERTY ARISING FROM THE USE OF THIS DOCUMENT.

CLIENT: CITY OF NAPLES  
 735 8TH STREET SOUTH  
 NAPLES, FL 34102

PROJECT: EAST NAPLES BAY DREDGING

TITLE: BACKGROUND WATER QUALITY MONITORING LOCATIONS

901 PELICAN BAY BLVD  
 SUITE 200  
 NAPLES, FL 34109  
 TEL (813) 440-4540

WWW.STANTEC.COM

JOB NO.: 2028113191  
 DRAWN: KHN  
 DESIGN: MSS  
 CHECKED: JRT  
 APPROVED: MSS  
 SHEET NO. C-900