

LOCATION MAP  
1" INCH = 2,000 FEET

# BATHYMETRIC SURVEY OF EAST NAPLES BAY COLLIER COUNTY, FLORIDA

-FOR-

## STANTEC CONSULTING SERVICES, INC.

JULY 12, 2019

COMMISSION NUMBER: 35710-01

PREPARED BY:

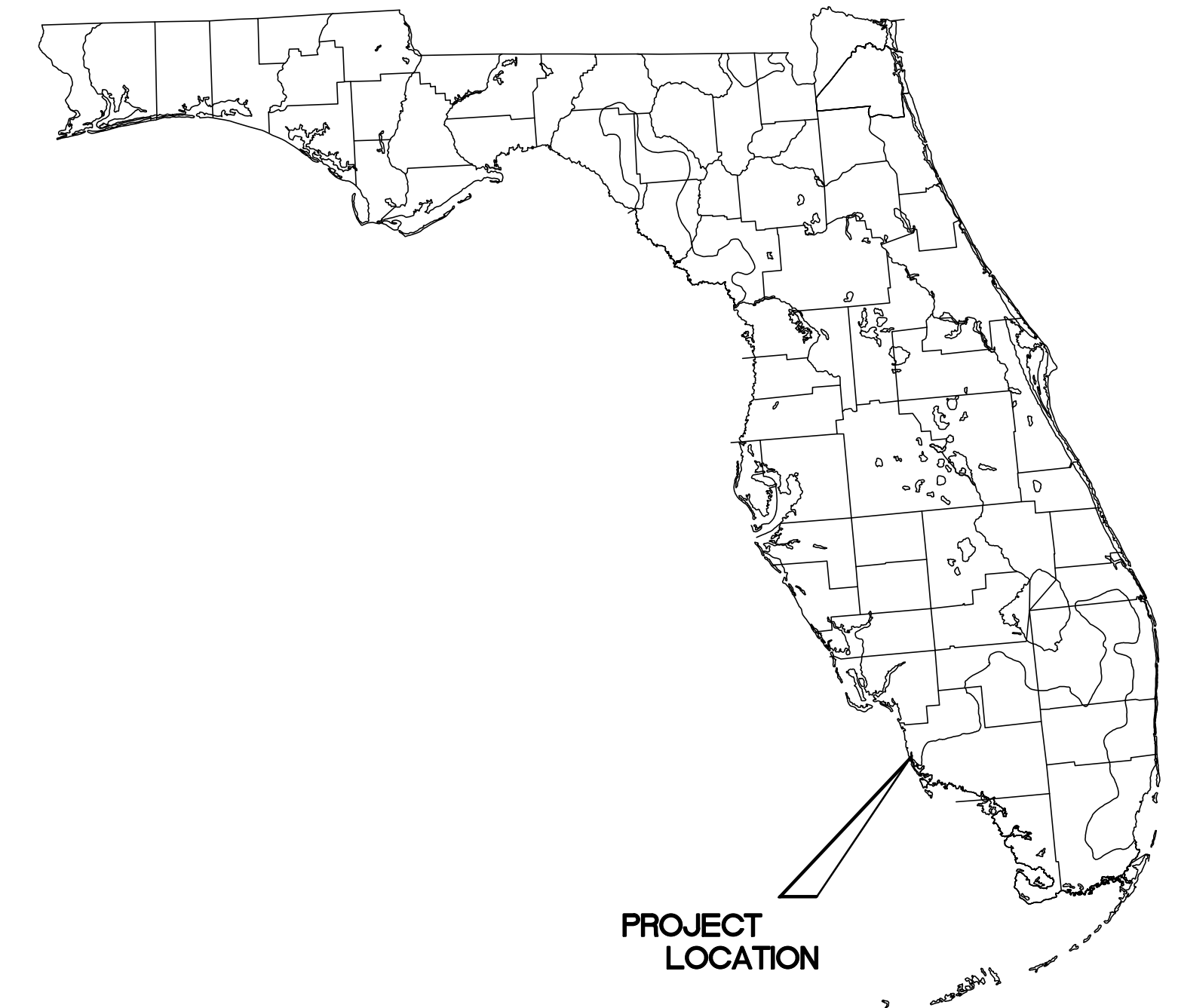
**Morgan & Eklund Inc.**  
PROFESSIONAL SURVEY CONSULTANTS



4909 US HIGHWAY #1  
VERO BEACH, FL 32967  
PHONE: (772) 388-5364  
FAX: (772) 388-3165

1612 NW 2D AVENUE SUITE 3  
BOCA RATON, FL 33432  
PHONE: (954) 421-6882  
FAX: (954) 421-0425  
LB #4298

1001 NORTH AMERICAN WAY  
SUITE 211  
MIAMI, FL 33132  
PHONE: (305) 364-5158



### SURVEY NOTES:

- GRID COORDINATES SHOWN ARE IN FEET, AND ARE REFERENCED TO THE FLORIDA STATE PLANE COORDINATE SYSTEM, EAST ZONE, NORTH AMERICAN DATUM OF 1983, NGS ADJUSTMENT OF 1990 (NAD 83/90).
- GRID COORDINATES OF UPLAND DATA ARE BASED ON CONTROL MONUMENTS AS SHOWN IN THE CONTROL TABLE.
- ELEVATIONS SHOWN ARE IN FEET AND ARE REFERENCED TO THE NATIONAL GEODETIC VERTICAL DATUM OF 1929 (NGVD 29).
- ELEVATIONS ARE BASED ON CONTROL MONUMENTATION AS SHOWN IN THE CONTROL TABLE.
- AERIAL IMAGERY WAS TAKEN IN 2018 AND WAS PROVIDED BY FLORIDA DEPARTMENT OF TRANSPORTATION.
- CAUTION:** UNDERGROUND UTILITIES AND IMPROVEMENTS NOT LOCATED.
- BATHYMETRIC INFORMATION DEPICTED ON THIS SURVEY REPRESENTS THE EXISTING CONDITIONS ON THE DATE OF THE FIELD SURVEY AND WERE MEASURED USING AN ODOM MB1 MULTIBEAM SWATH BATHYMETRIC SYSTEM OPERATING AT 219 KHZ.
- HORIZONTAL POSITIONING AND WATER SURFACE ELEVATIONS WERE MEASURED USING A TRIMBLE SPS 852 RTK/GPS SYSTEM.
- NOT VALID WITHOUT THE SIGNATURE AND ORIGINAL RAISED SEAL OF A FLORIDA LICENSED SURVEYOR AND MAPPER.

### CONTROL TABULATION

POINT	NAD 83/90 SPCS 0901 US FEET	NGVD 29	AGENCY	DESCRIPTION	STAMPING
	NORTHING	EASTING	ELEVATION		
L 408	-	-	14.79	NGS	DISK SET IN FACE OF WALL L 408 1992
BMT B 48	-	-	3.99	NDNE	DISK IN CONCRETE SEAWALL BMT B 48
COL 30	-	-	5.01	FLDNR	DISK ON CONCRETE PAD COL 30 BS 1986
V 250	-	-	5.60	CGS	CONCRETE MONUMENT V 250 1965
872 5110 C TIDAL	654861.37	393015.92	6.25	NDS	DISK IN PVC 1978 5110 C
5026 194 9244	644767.77	411192.78	8.33	DENI	CONCRETE MONUMENT 5026 194 9244 1992
APF C	660188.46	403506.27	5.50	NDS	12" X 12" CONCRETE MONUMENT APF C 1979
101	651041.36	405929.05	7.80	M&E	CONCRETE MONUMENT 0101
102	652093.87	403268.71	5.20	M&E	CONCRETE MONUMENT 0102
103	652256.91	401468.25	4.90	M&E	CONCRETE MONUMENT 0103
104	650940.62	399406.39	4.60	M&E	CONCRETE MONUMENT 0104

### SHEET INDEX

SHEET NO.	DESCRIPTION
1	COVER SHEET
2-6	ELEVATION CONTOURS
7-32	CROSS SECTION VIEW

CERTIFICATE OF SURVEYOR - I HEREBY CERTIFY THAT THE INFORMATION SHOWN HEREON IS IN ACCORDANCE WITH A RECENT FIELD SURVEY MADE UNDER MY DIRECTION, AND THAT IT IS TRUE AND CORRECT TO THE BEST OF MY KNOWLEDGE AND BELIEF, AND MEETS THE MINIMUM TECHNICAL STANDARDS AS SET FORTH BY THE FLORIDA BOARD OF PROFESSIONAL LAND SURVEYORS IN CHAPTER 5J-17, FLORIDA ADMINISTRATIVE CODE, PURSUANT TO SECTION 472.027, FLORIDA STATUTES.

FIELD BOOKS: COLLIER 21, PAGES 1-20

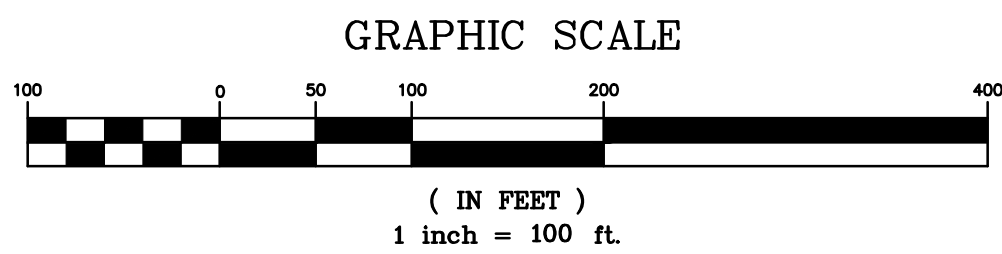
JOHN R. MORGAN, II, PLS  
PROFESSIONAL LAND SURVEYOR # 3520  
STATE OF FLORIDA



ELEVATION CONTOURS (NGVD 29)		
Minimum Elevation	Maximum Elevation	Color
-11	-10	Blue
-10	-9	Cyan
-9	-8	Light Blue
-8	-7	Green
-7	-6	Light Green
-6	-5	Yellow-Green
-5	-4	Yellow
-4	-3	Orange
-3	-2	Light Orange
-2	-1	Red-Orange
-1	0	Red

EAST NAPLES BAY

ELEVATION CONTOUR MAP (NGVD 29)



SEE SHEET 1 FOR NOTES

**Morgan & Eklund Inc.**  
**PROFESSIONAL SURVEY CONSULTANTS**

4909 US HIGHWAY #1  
 VERO BEACH, FL 32967  
 PHONE: (772) 388-5364  
 FAX: (772) 388-3165

1612 NW 2ND AVENUE  
 SUITE 3  
 BOCA RATON, FL 33432  
 PHONE: (954) 421-6882  
 FAX: (954) 421-0425

LB #4298

JOHN R. MORGAN II, PSM  
 FLORIDA CERTIFICATION #3520

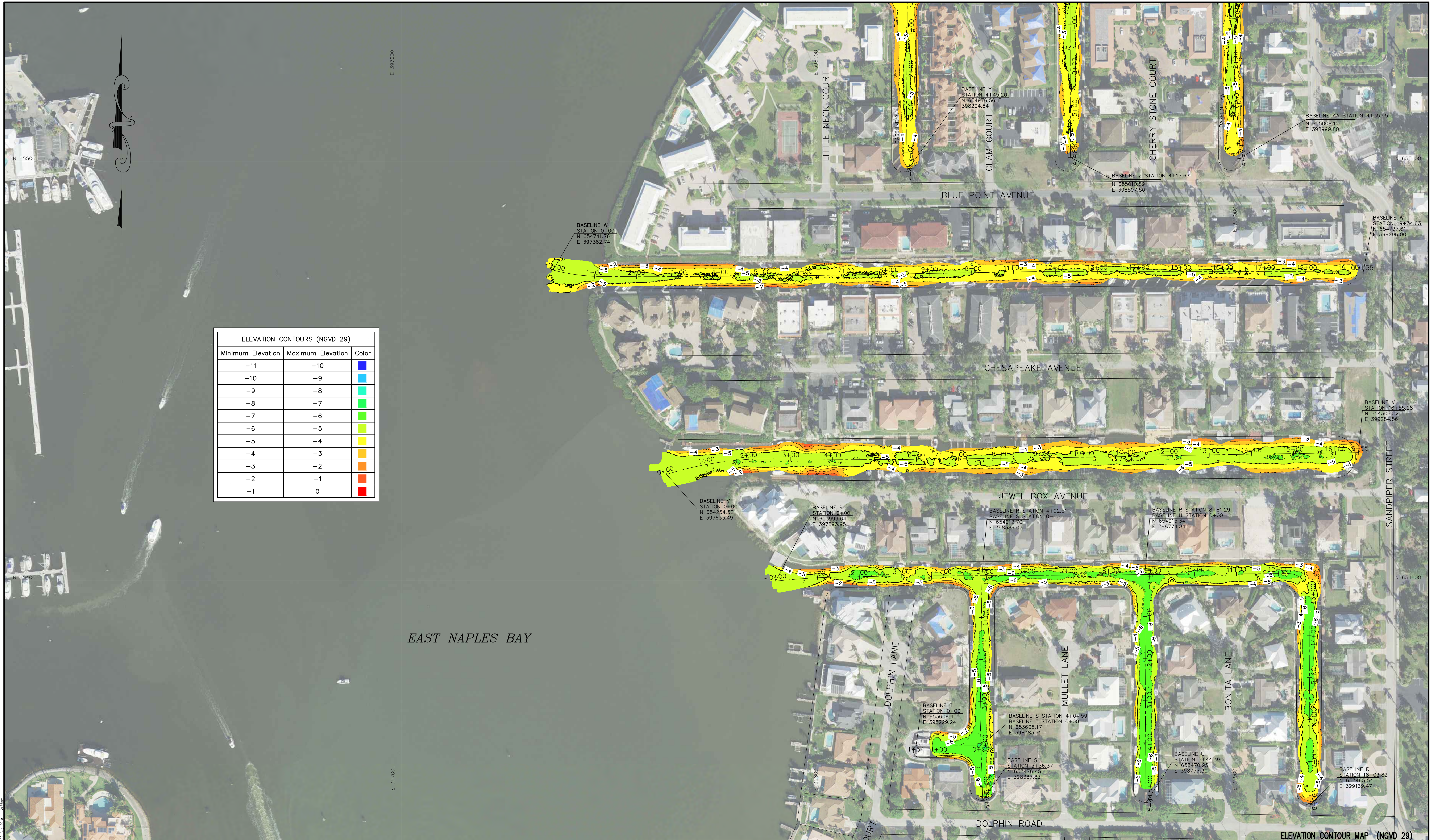
CERTIFICATE OF SURVEYOR - I HEREBY CERTIFY THAT THE INFORMATION SHOWN HEREON IS IN ACCORDANCE WITH A RECENT FIELD SURVEY MADE UNDER MY DIRECTION AND THAT IT IS TRUE AND CORRECT TO THE BEST OF MY KNOWLEDGE AND BELIEF, AND MEETS THE STANDARDS OF PRACTICE AS SET FORTH BY THE FLORIDA BOARD OF PROFESSIONAL LAND SURVEYORS IN CHAPTER 55-17, FLORIDA ADMINISTRATIVE CODE, PURSUANT TO SECTION 472.027, FLORIDA STATUTES.

JOHN R. MORGAN II, PLS  
 PROFESSIONAL LAND SURVEYOR #3520  
 STATE OF FLORIDA

**BATHYMETRIC SURVEY OF EAST NAPLES BAY**  
**COLLIER COUNTY, FLORIDA**  
**- FOR -**  
**STANTEC CONSULTING SERVICES, INC.**

COMMISSION NO. 35710-1  
 SCALE 1" = 100'  
 DATE 8/5/19  
 SHEET 2 of 32

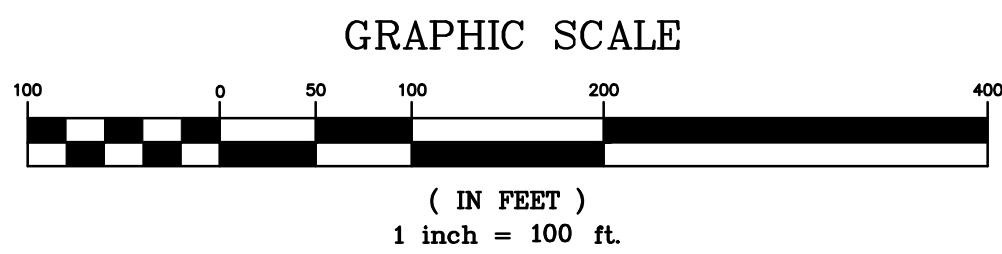
DRAWN BY LFP	CHECKED BY JRM	FIELD BOOK PAGE NO.	SEE COVER	DATE OF SURVEY 7/12/19
--------------	----------------	---------------------	-----------	------------------------



ELEVATION CONTOURS (NGVD 29)		
Minimum Elevation	Maximum Elevation	Color
-11	-10	Blue
-10	-9	Light Blue
-9	-8	Cyan
-8	-7	Green
-7	-6	Light Green
-6	-5	Yellow-Green
-5	-4	Yellow
-4	-3	Orange
-3	-2	Red-Orange
-2	-1	Red
-1	0	Dark Red

EAST NAPLES BAY

ELEVATION CONTOUR MAP (NGVD 29)



SEE SHEET 1 FOR NOTES

**Morgan & Eklund Inc.**  
**PROFESSIONAL SURVEY CONSULTANTS**

4909 US HIGHWAY #1 VERO BEACH, FL 32967 PHONE: (772) 388-5364 FAX: (772) 388-3165	1612 NW 2ND AVENUE SUITE 3 BOCA RATON, FL 33432 PHONE: (954) 421-6882 FAX: (954) 421-0425
--	---

LB #4298

CERTIFICATE OF SURVEYOR - I HEREBY CERTIFY THAT THE INFORMATION SHOWN HEREON IS IN ACCORDANCE WITH A RECENT FIELD SURVEY MADE UNDER MY DIRECTION AND THAT IT IS TRUE AND CORRECT TO THE BEST OF MY KNOWLEDGE AND BELIEF, AND MEETS THE STANDARDS OF PRACTICE AS SET FORTH BY THE FLORIDA BOARD OF PROFESSIONAL LAND SURVEYORS IN CHAPTER 55-17, FLORIDA ADMINISTRATIVE CODE, PURSUANT TO SECTION 472.027, FLORIDA STATUTES.

**JOHN R. MORGAN, II, PLS**  
 PROFESSIONAL LAND SURVEYOR #3520  
 STATE OF FLORIDA

<b>BATHYMETRIC SURVEY OF EAST NAPLES BAY</b>				COMMISSION NO. 35710-1
COLLIER COUNTY, FLORIDA				SCALE 1" = 100'
- FOR -				DATE 8/5/19
<b>STANTEC CONSULTING SERVICES, INC.</b>				SHEET 3 of 32
DRAWN BY LFP	CHECKED BY JRM	FIELD BOOK PAGE NO.	SEE COVER	DATE OF SURVEY 7/12/19